

In a paper by Carol A. Raymond, John L. LaBrecque, and Yngve Kristoffersen, entitled "Islas Orcadas Rise and Meteor Rise: the tectonic and depositional history of two aseismic plateaus from Sites 702, 703, and 704," Figure 5, parts A and B, were reproduced indistinctly. Reprinted below are pages 12 and 13 of SR Vol. 114, with Figure 5, parts A and B, shown more legibly.

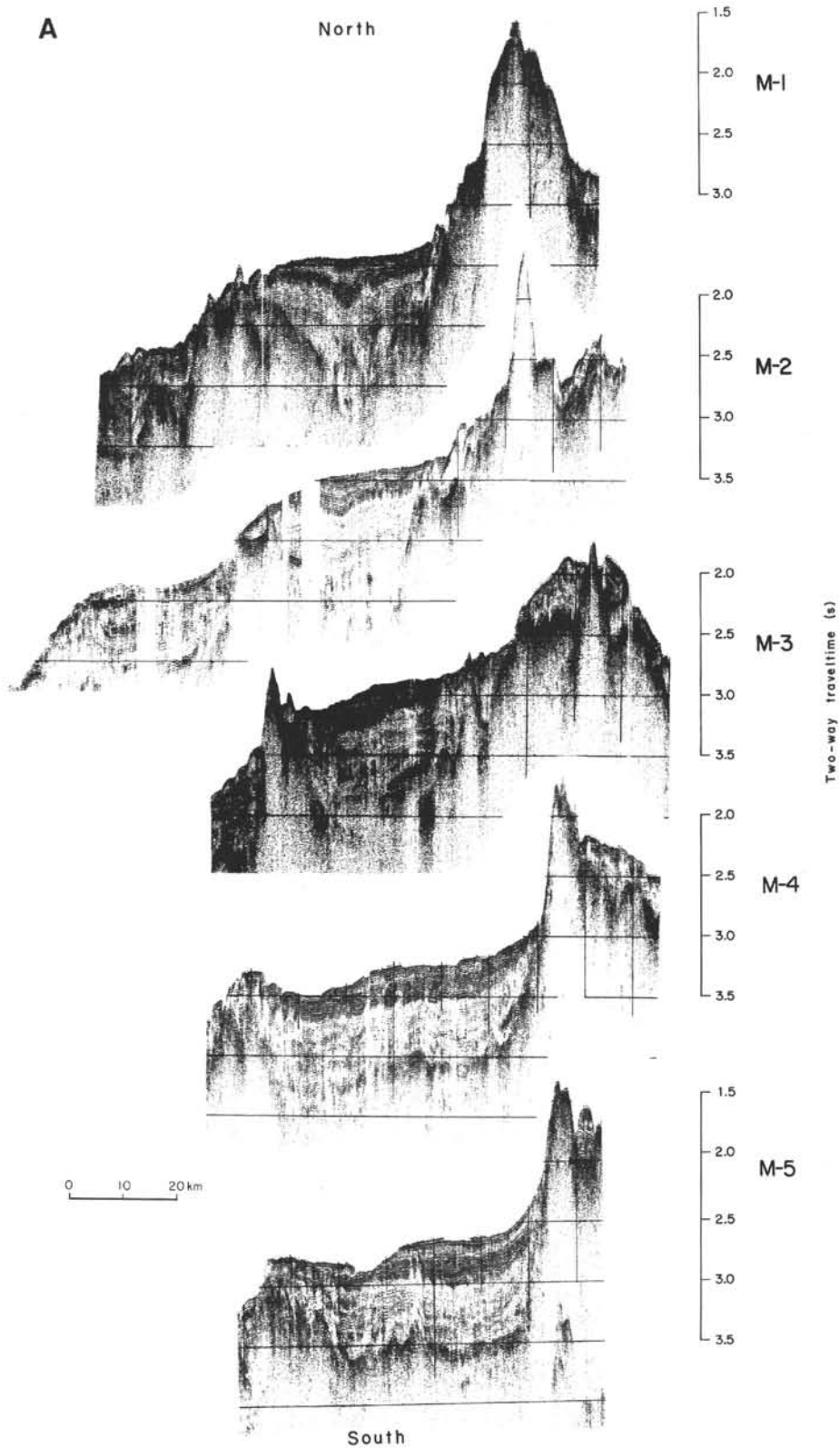


Figure 5. A. Analog records of single-channel seismic data from *Conrad 2710*. Profile locations are shown in Figure 4A. B. Line drawings of seismic records shown in Figure 4A. Seismic sequence boundaries are drawn heavier than internal reflectors. **V** pattern denotes the interpreted basement reflector. Interpreted faults are shown by heavy lines.

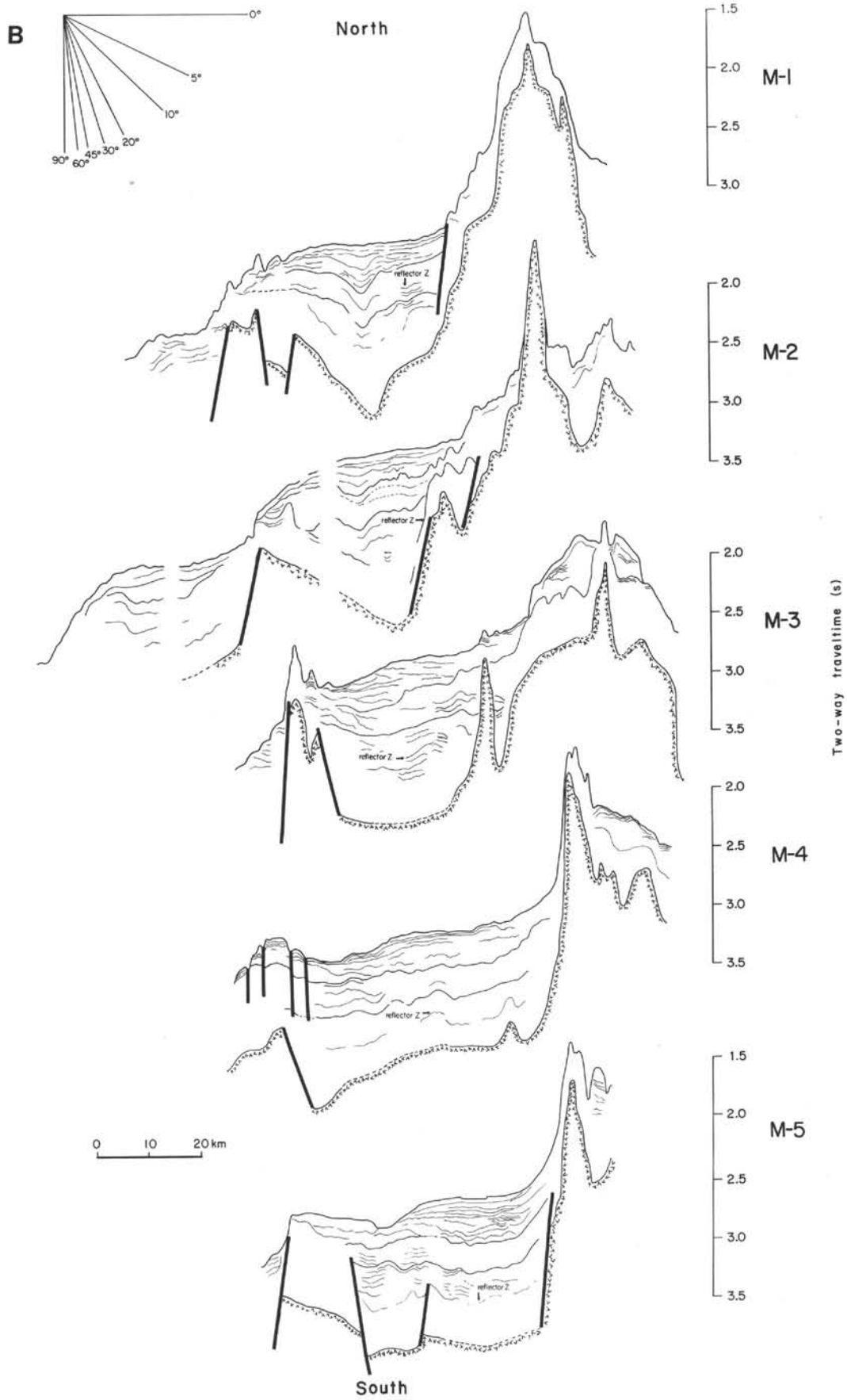


Figure 5 (continued).