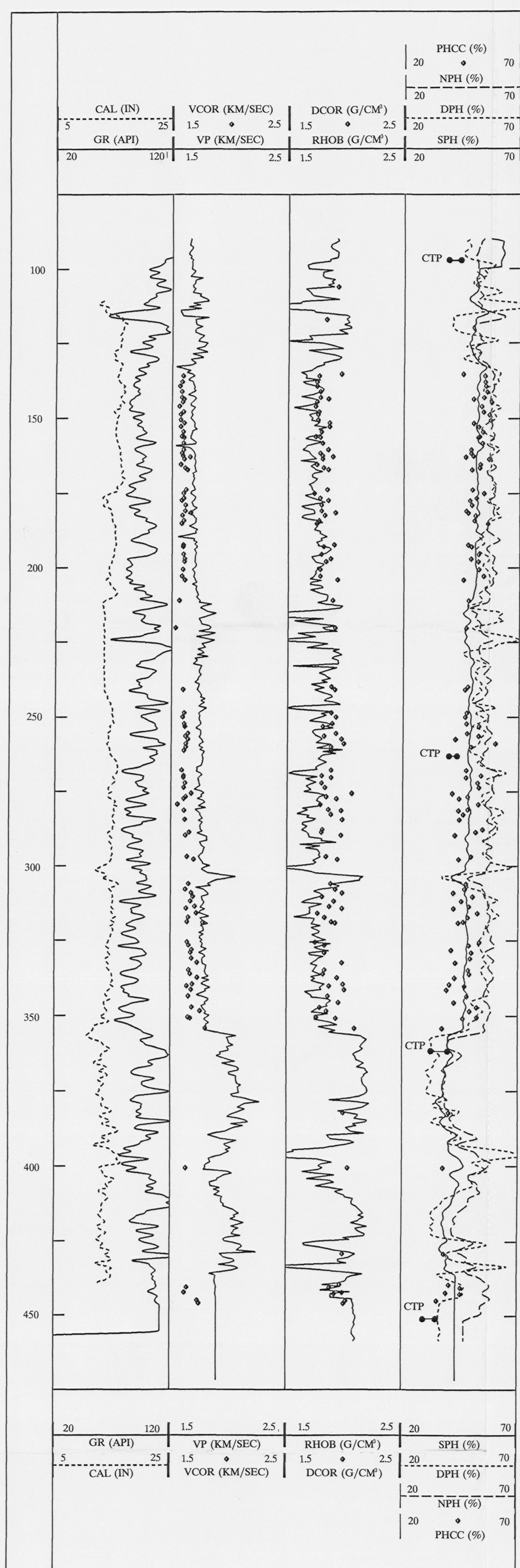
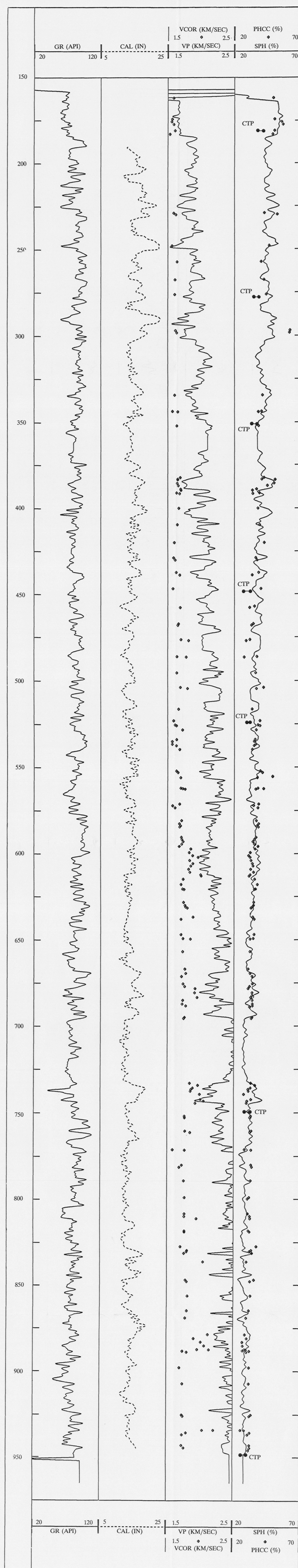


Scientific Results Volume 116: Chapter 30: Figure 4. Compilation of physical properties data obtained from downhole logging (curves) and laboratory (points) measurements for Hole 719B sediments. Abbreviations: CAL, caliper; GR, gamma radiation; VCOR, compressional-wave velocity measured on cores; VP, sonic log velocity; DCOR, density determined on board; RHOB, log density; PHCC, laboratory-determined porosity; NPH, neutron log-derived porosity; DPH, density log-derived porosity; SPH, sonic log-derived porosity. CTP is porosity found in compression tests under simulated *in-situ* overburden. For details, see text.



Scientific Results Volume 116: Chapter 30: Figure 5. Compilation of physical properties data obtained from downhole logging (curves) and laboratory (points) measurements for Hole 718E sediments. Abbreviations: GR, gamma radiation; CAL, caliper; VCOR, compressional-wave velocity measured on cores; VP, sonic log velocity; PHCC, laboratory-determined porosity; SPH, sonic log-derived porosity. CTP is porosity found in compression tests under simulated *in-situ* overburden. For details, see text.



Scientific Results Volume 116: Chapter 31: Interhole correlations among sedimentary layers cored at Sites 717, 718, and 719, Leg 116.

