

LEG

1
3
1

SITE

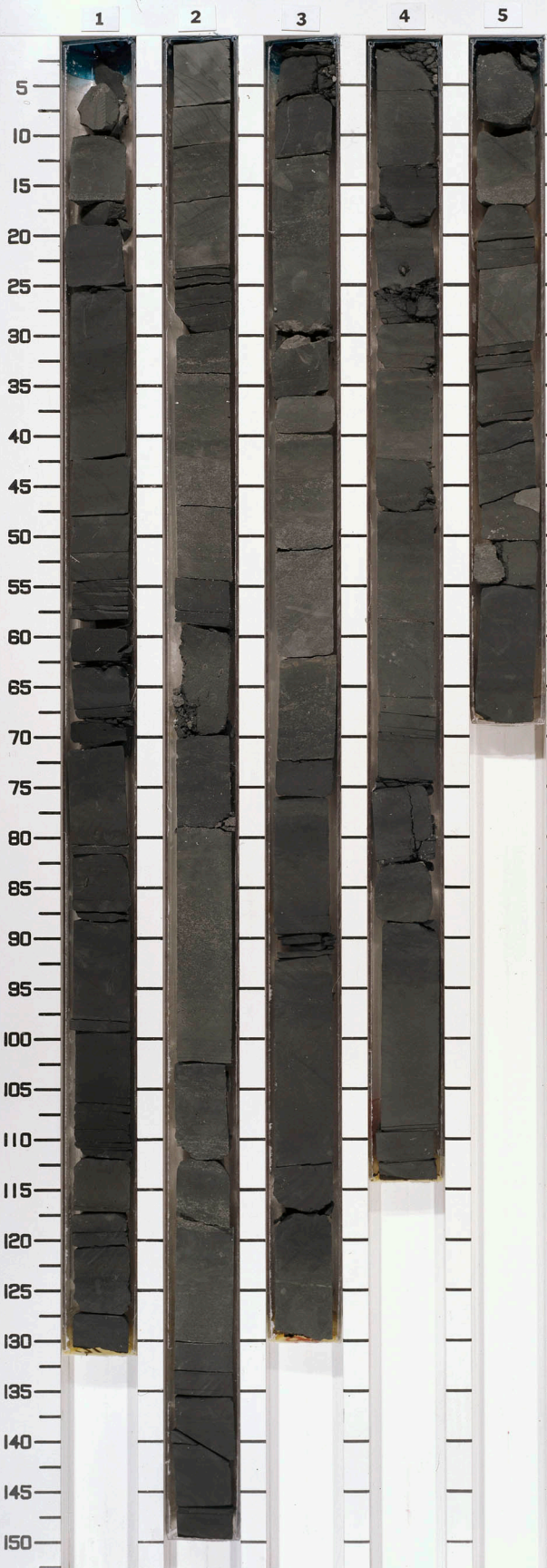
8
0
8

HOLE

C

CORE

1
5
R



15-3 17-3 22-2 30-5 35-3 42-2 47-4 51-4

LEG

5
10
15
20
25
30
35
40
45
50
55
60
65
70
75
80
85
90
95
100
105
110
115
120
125
130
135
140
145
150

SITE

8008

HOLE

C

CORE

