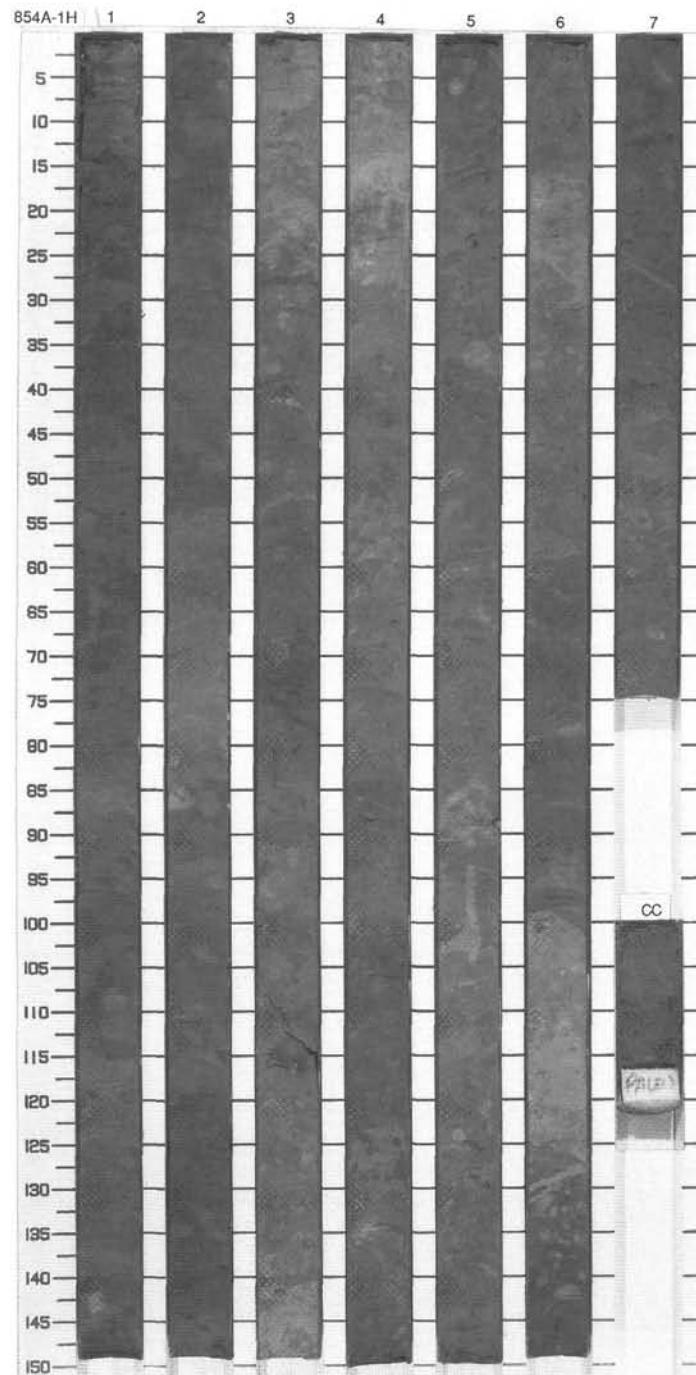
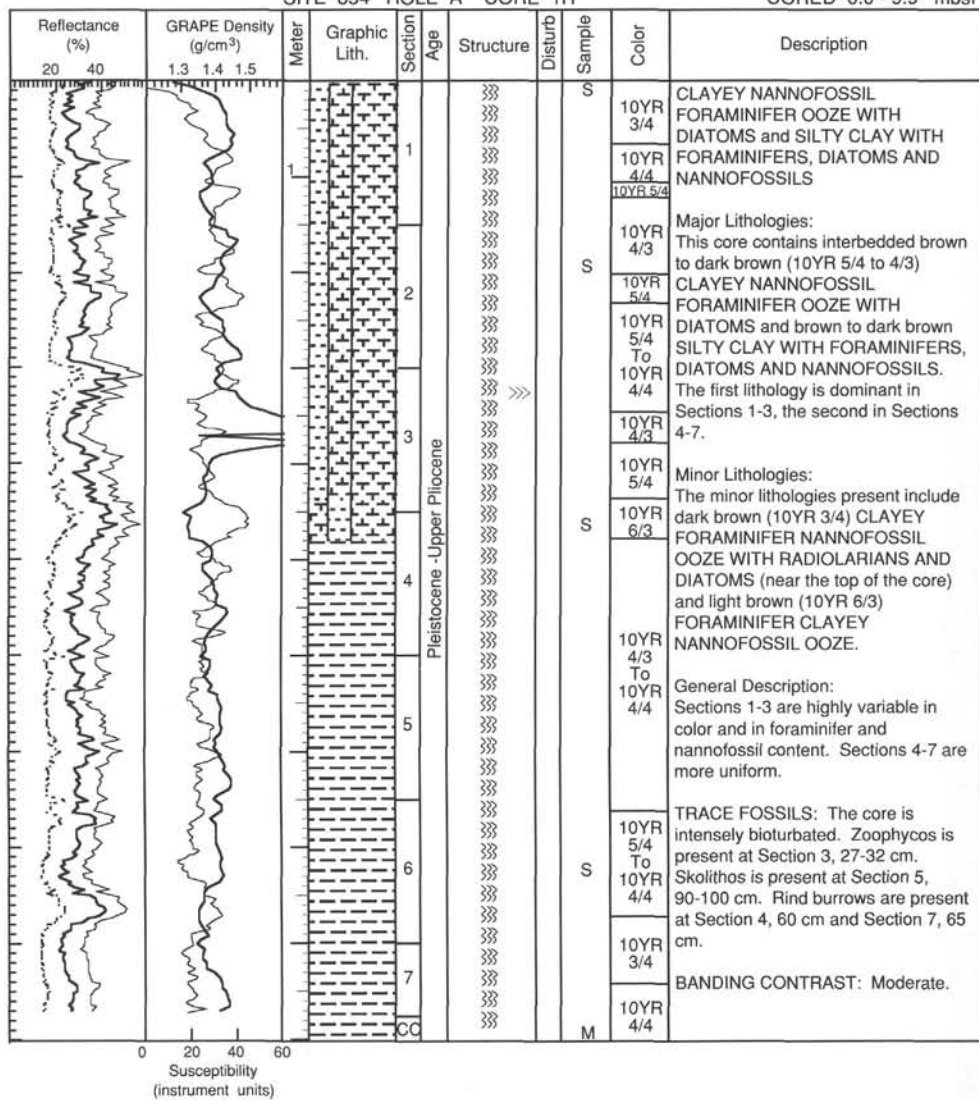
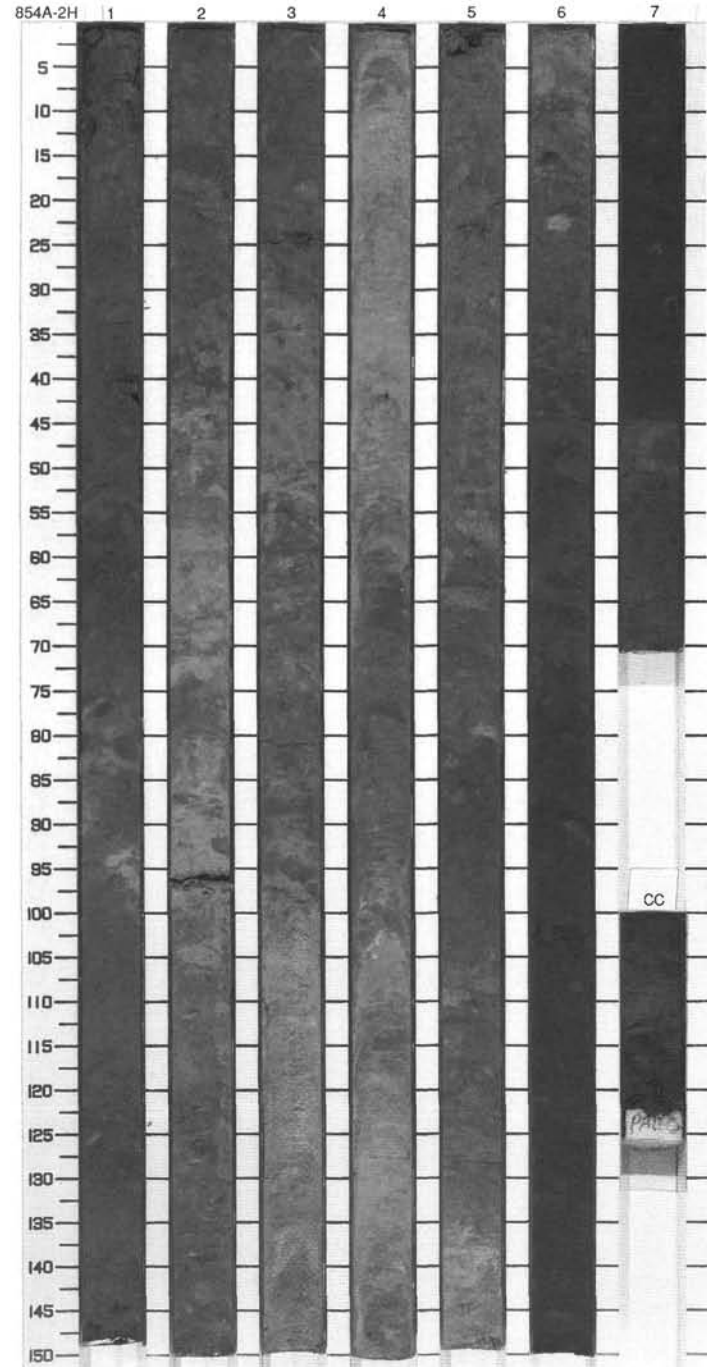
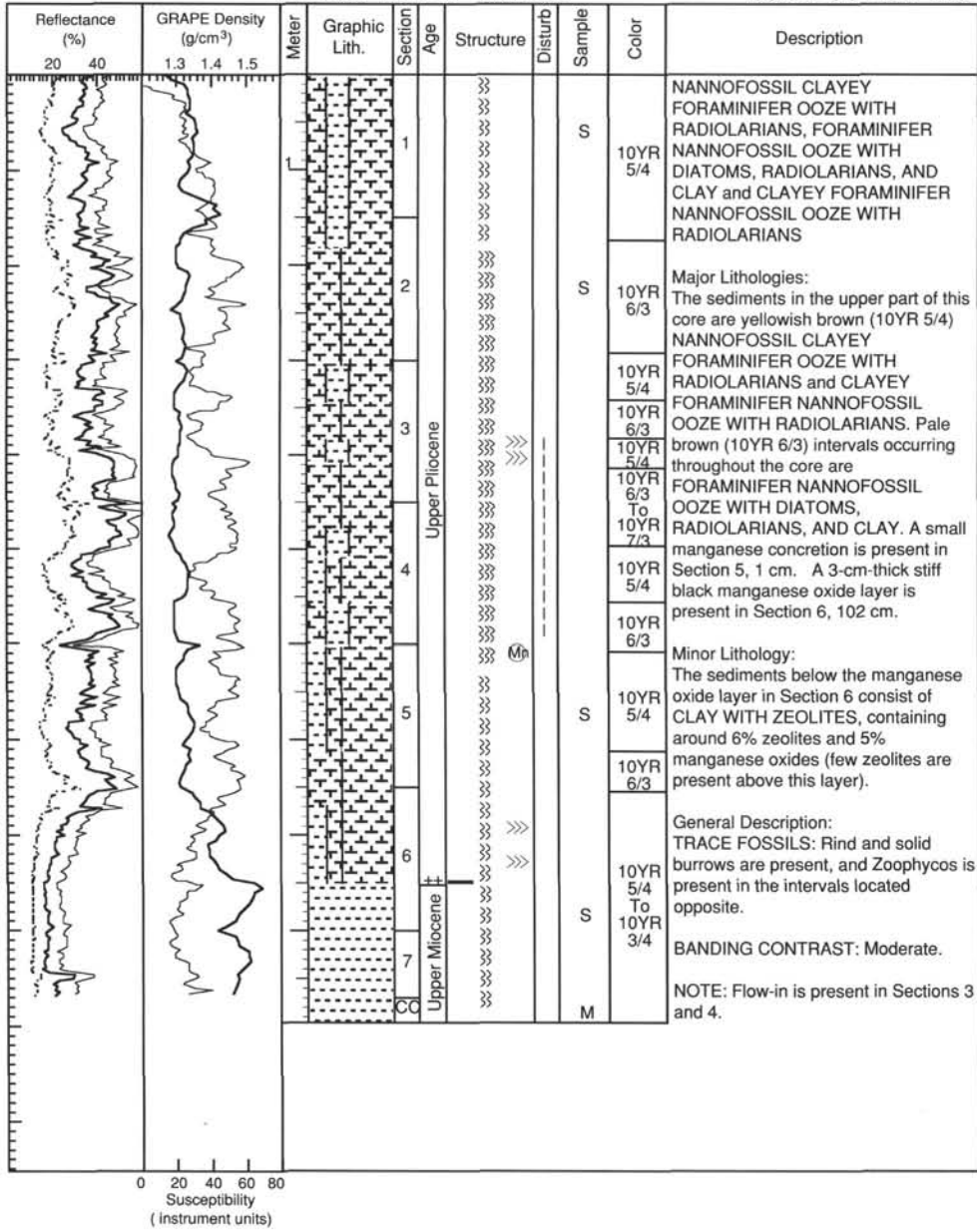


SITE 854 HOLE A CORE 1H

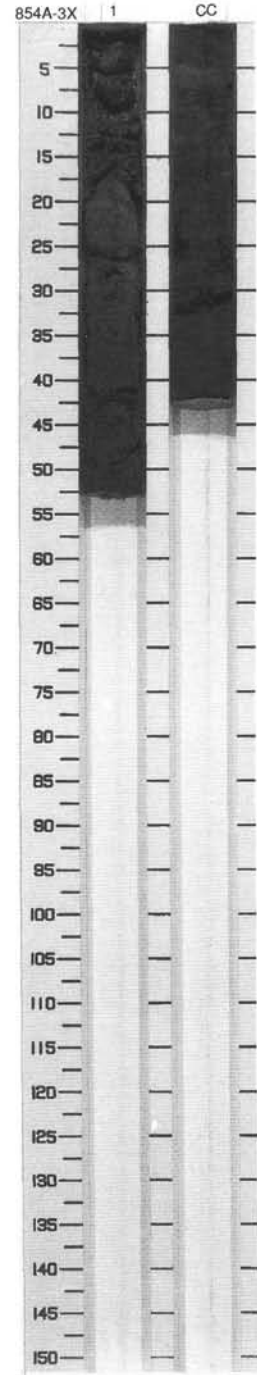
CORED 0.0 - 9.9 mbsf



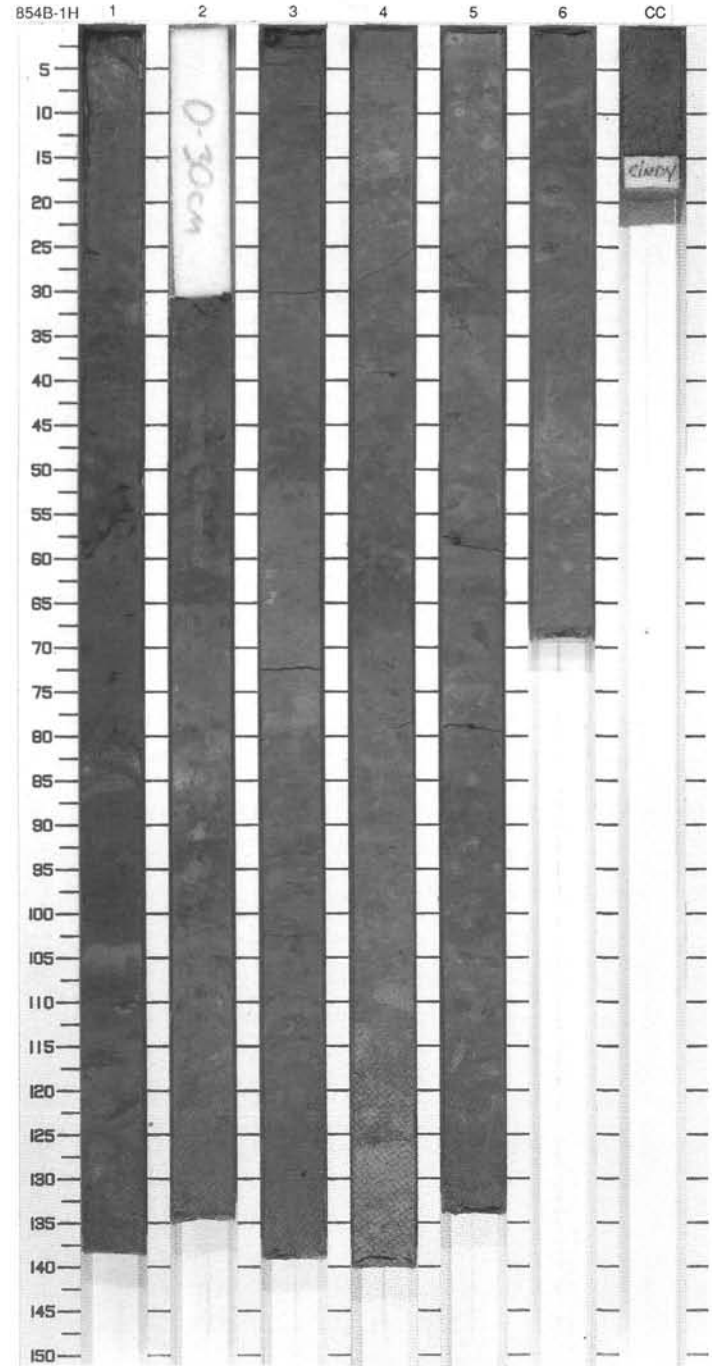
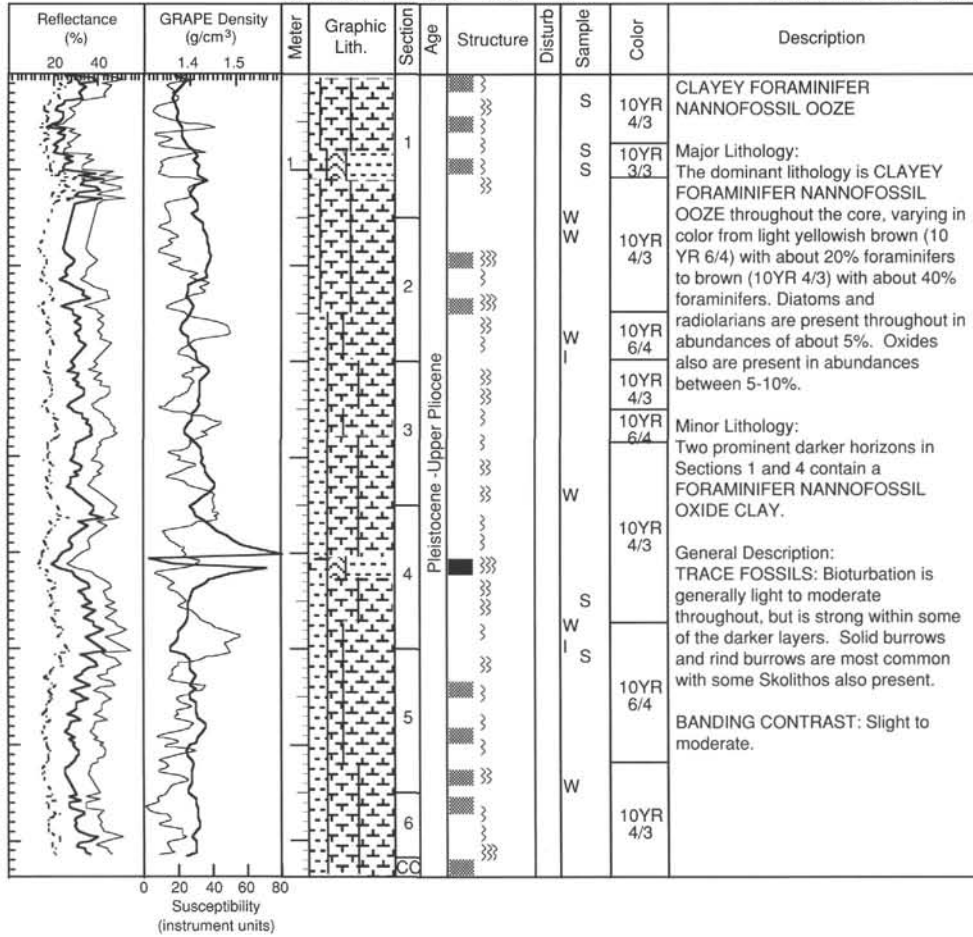
SITE 854 HOLE A CORE 2H CORED 9.9 - 19.4 mbsf



Meter	Graphic Lith.	Section	Age	Structure	Disturb	Sample	Color	Description
		1	uMio	Z Z Z Z	www	S M	10YR 2/2 To 10YR 3/3	<p>ZEOLITIC IRON-OXIDE CLAY</p> <p>Major Lithology: This core is composed of dark brown to very dark brown ZEOLITIC IRON-OXIDE CLAY. The core is very disturbed throughout.</p> <p>General Description: TRACE FOSSILS: None.</p> <p>BANDING CONTRAST: None.</p>

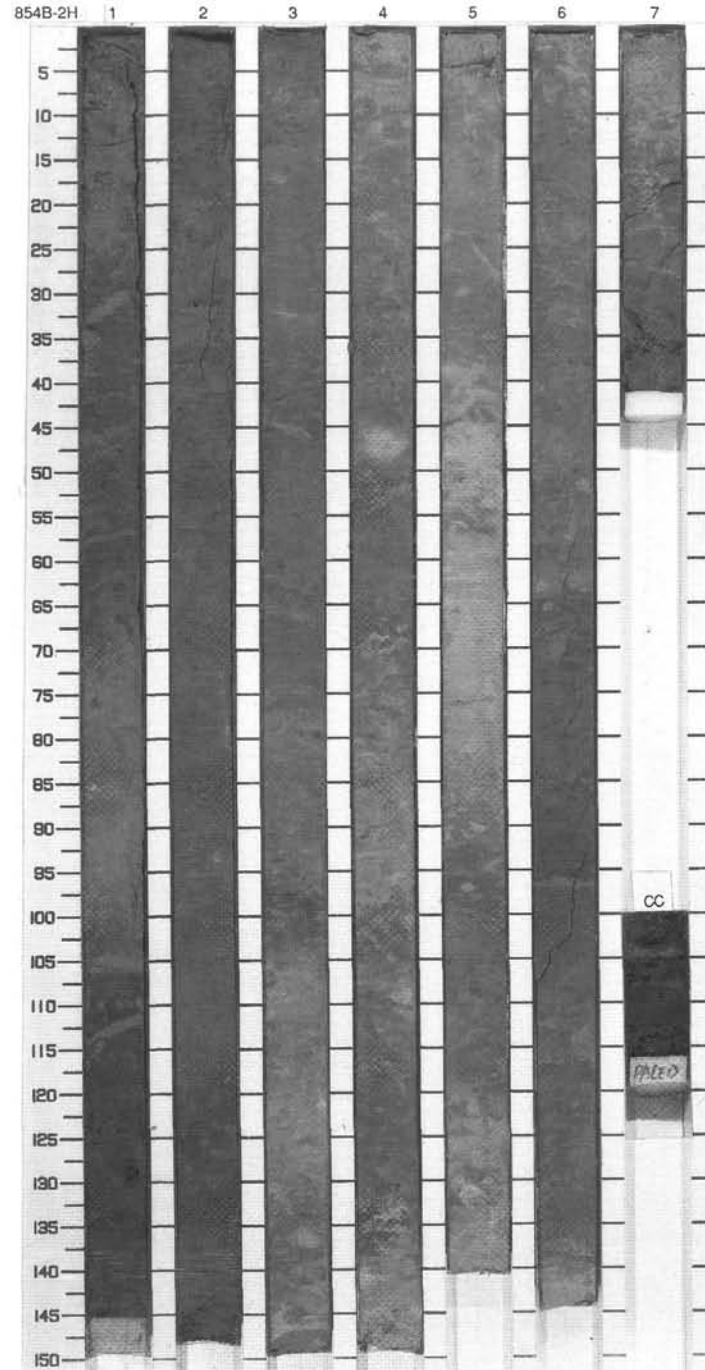
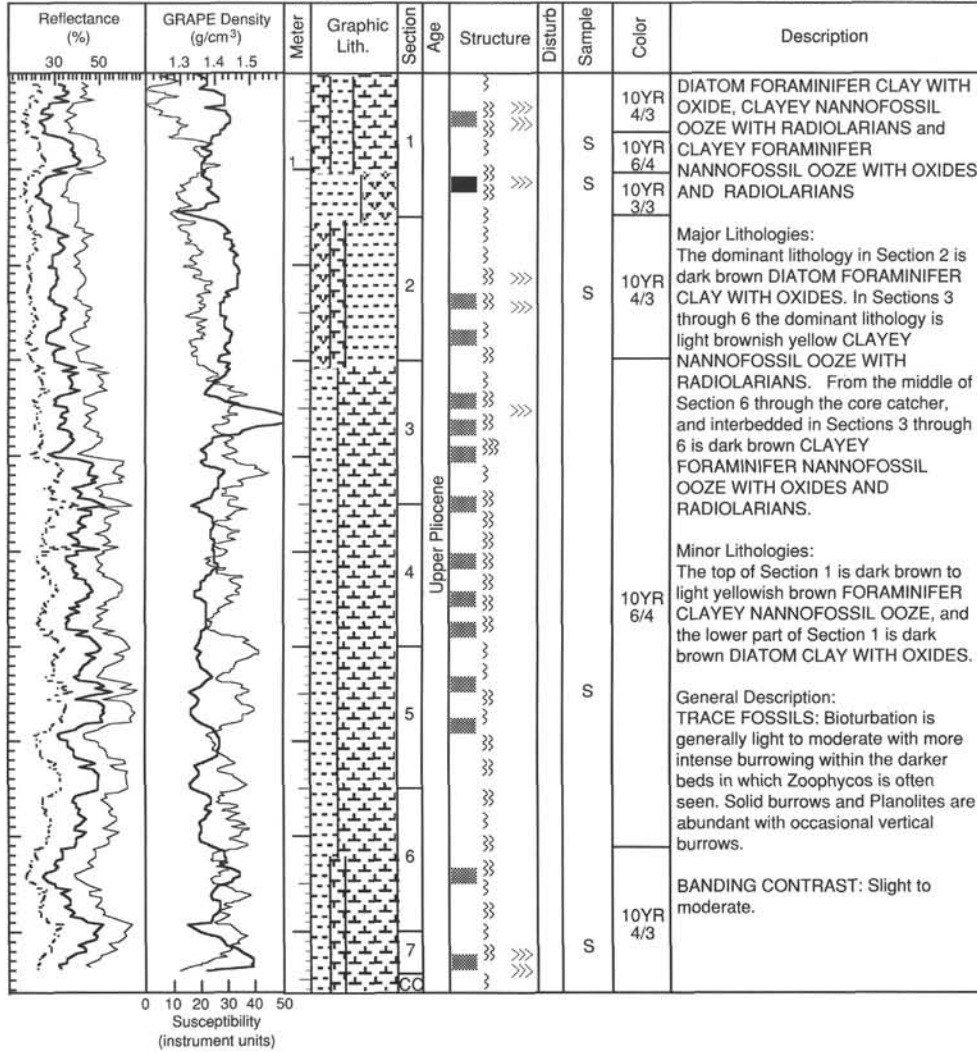


SITE 854 HOLE B CORE 1H CORED 0.0 - 8.4 mbsf

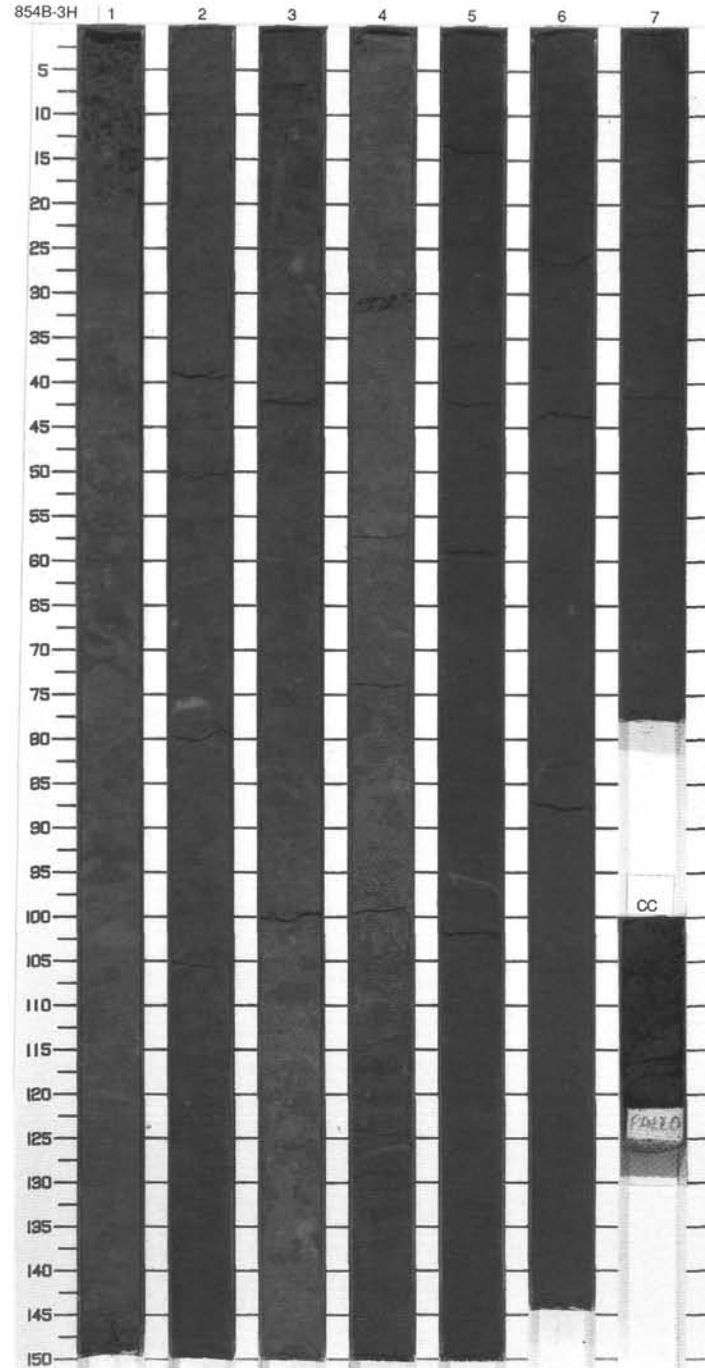
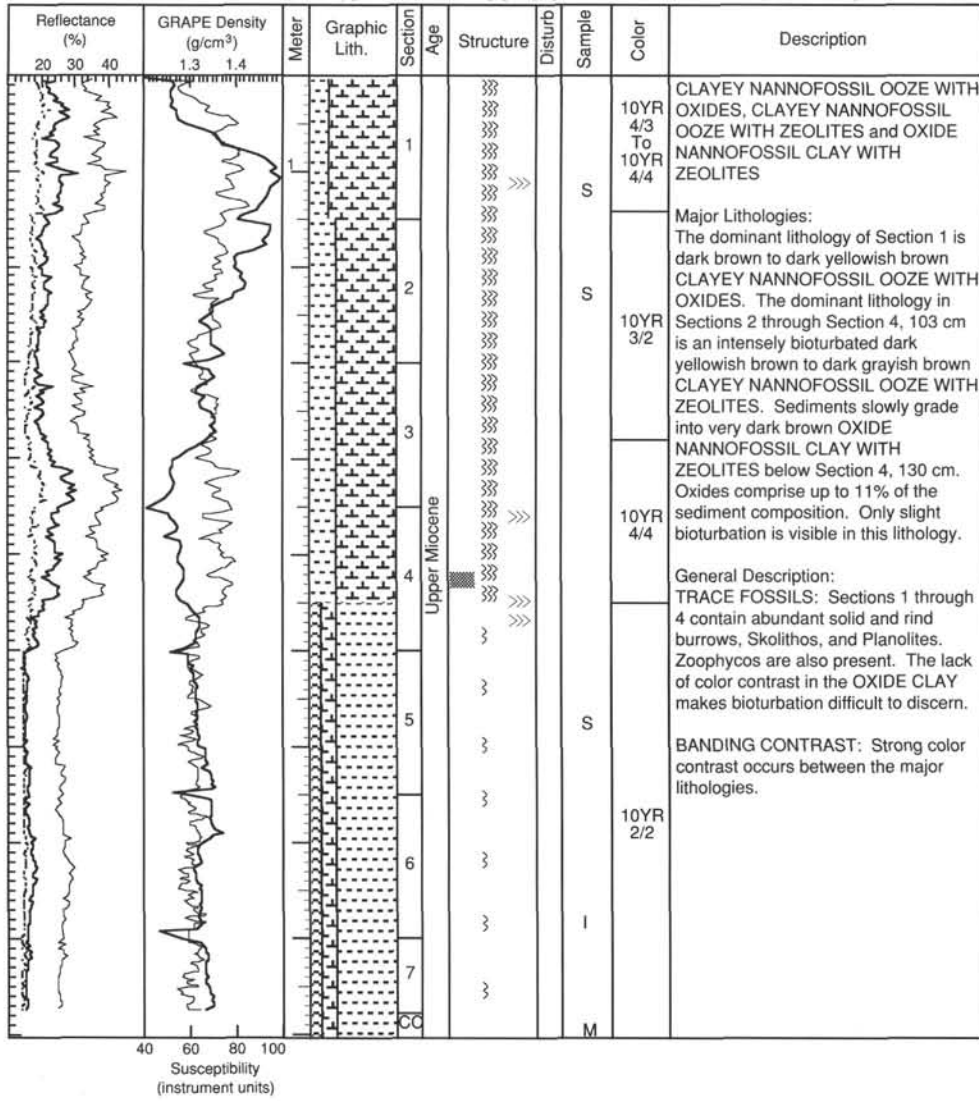


SITE 854 HOLE B CORE 2H

CORED 8.4 - 17.9 mbsf

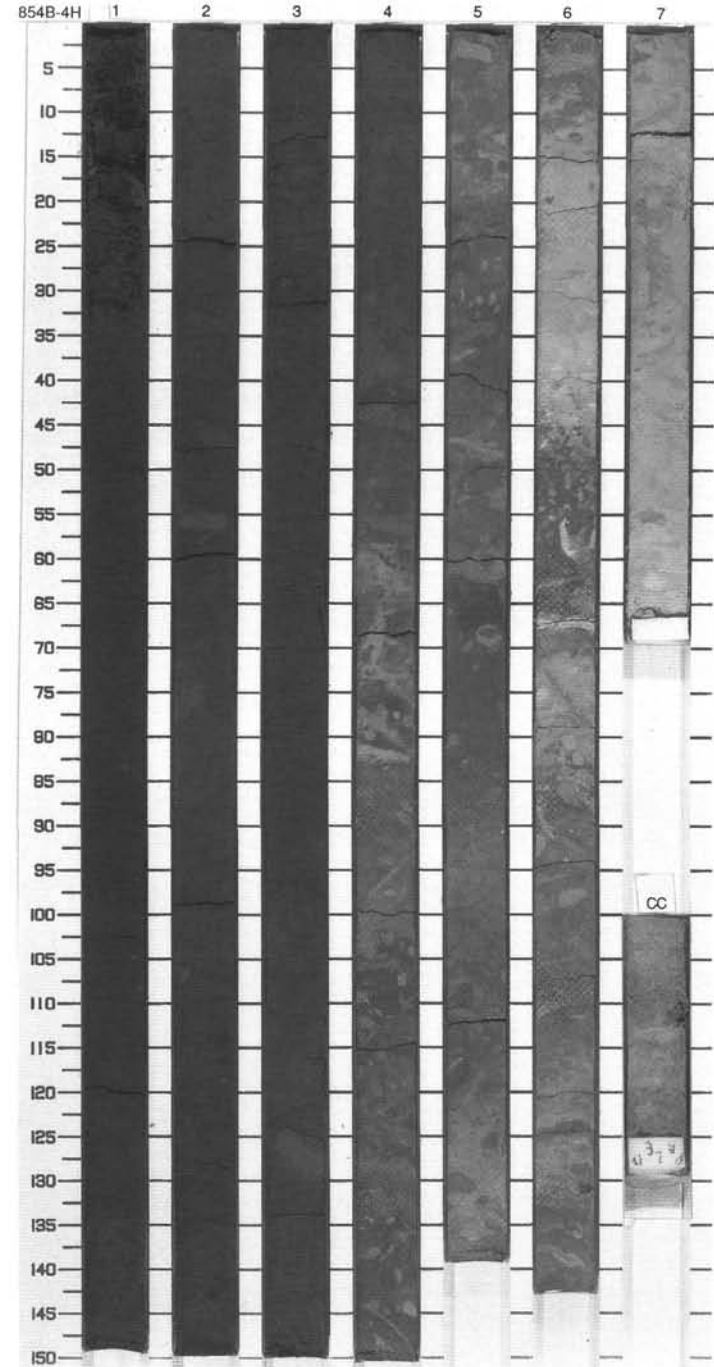
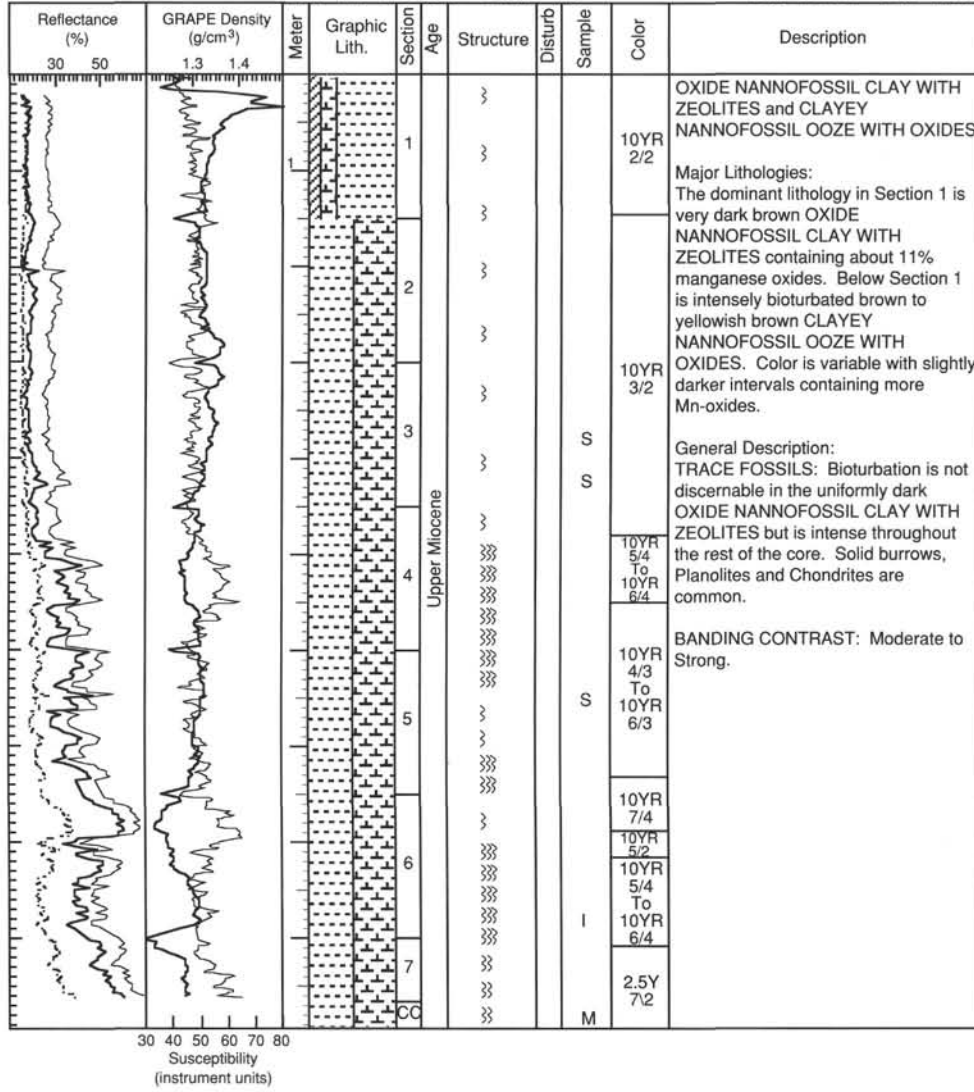


SITE 854 HOLE B CORE 3H
CORED 17.9 - 27.4 mbsf

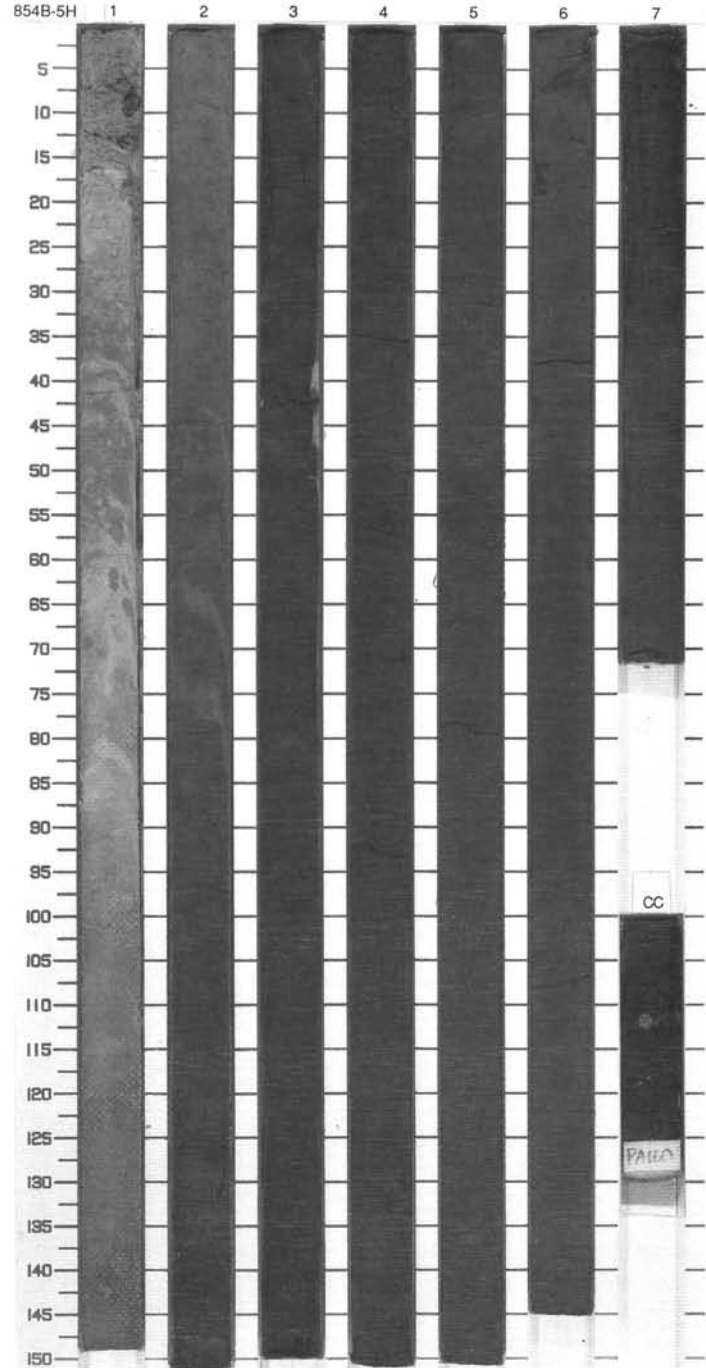
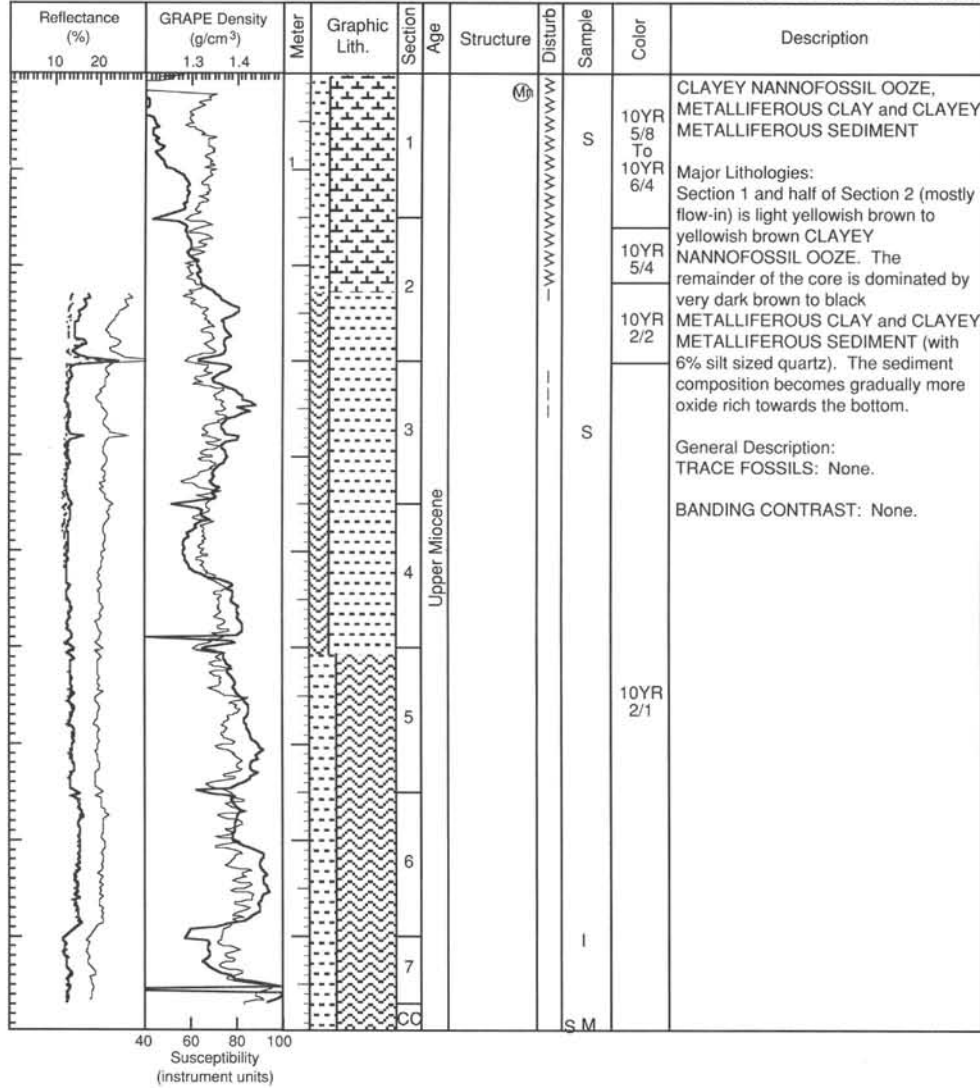


SITE 854 HOLE B CORE 4H

CORED 27.4 - 36.9 mbsf

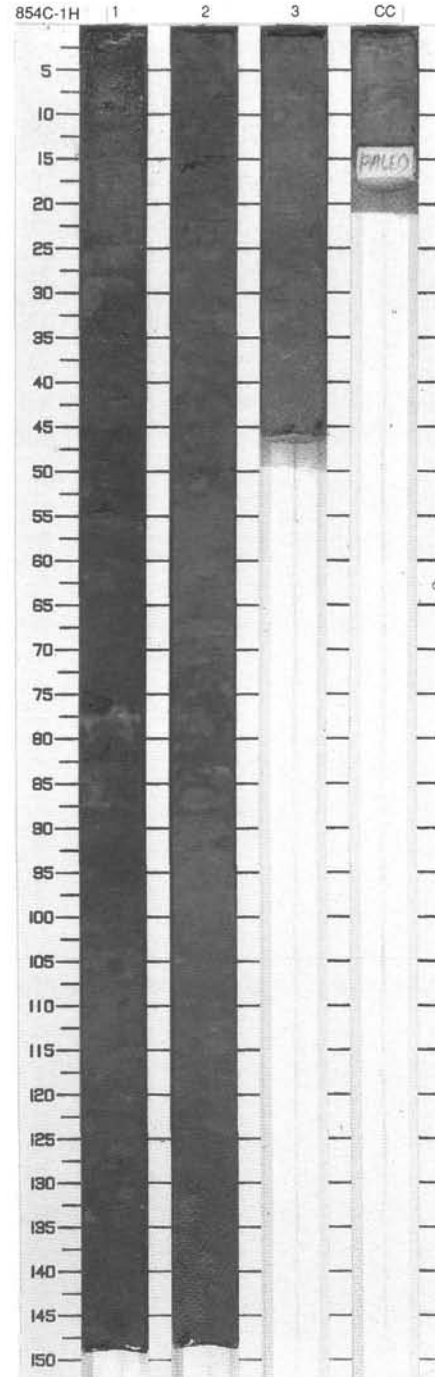
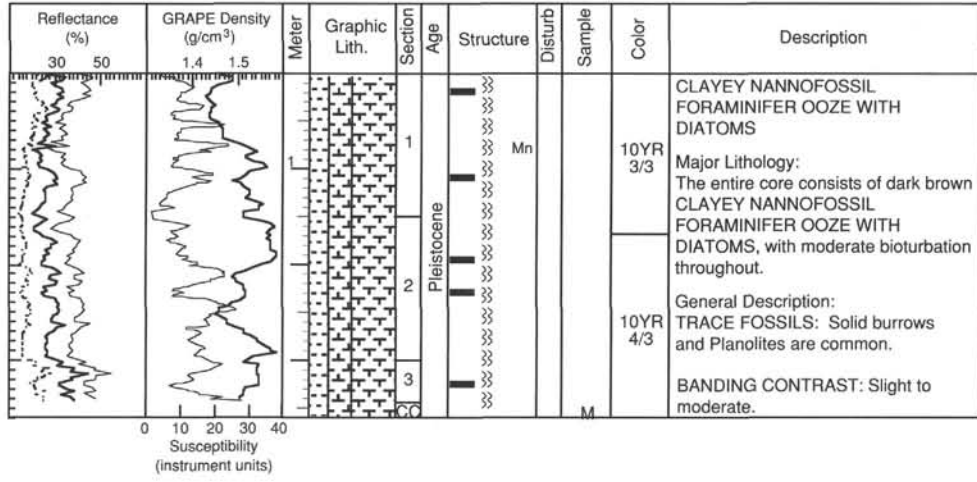


SITE 854 HOLE B CORE 5H CORED 36.9 - 45.4 mbsf

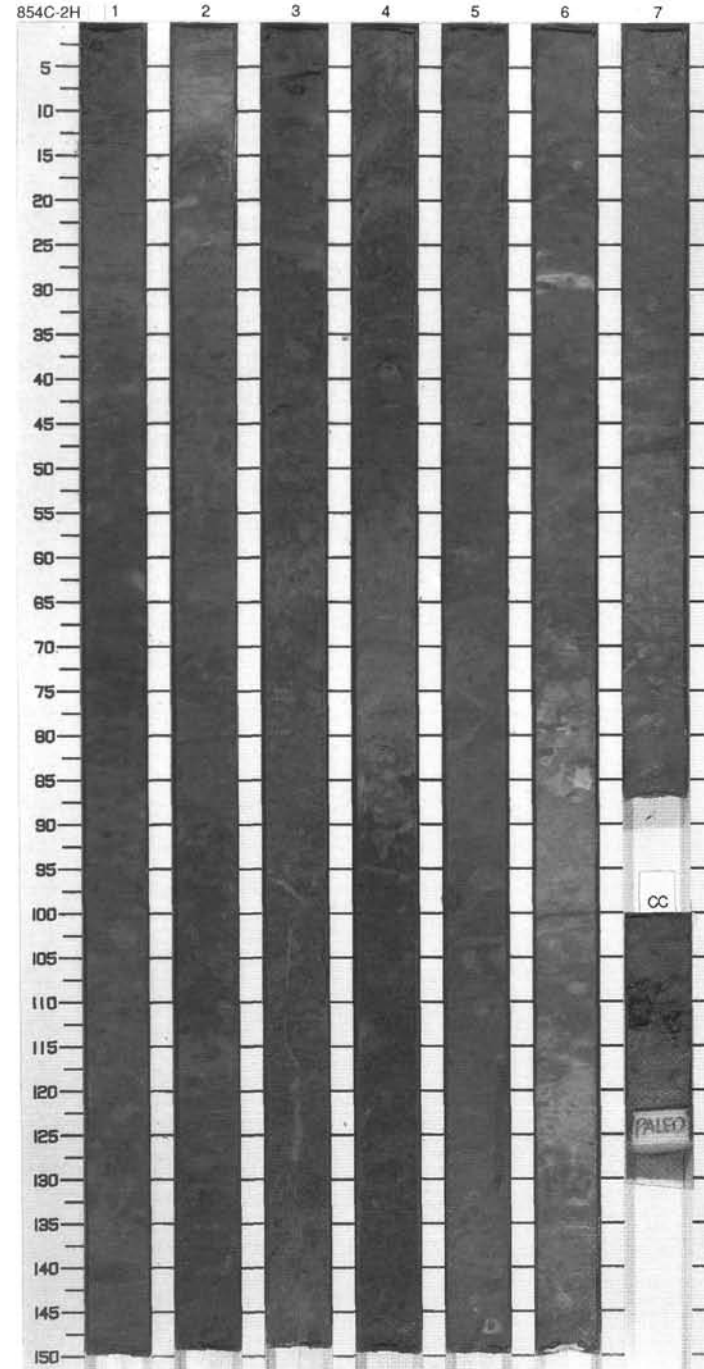
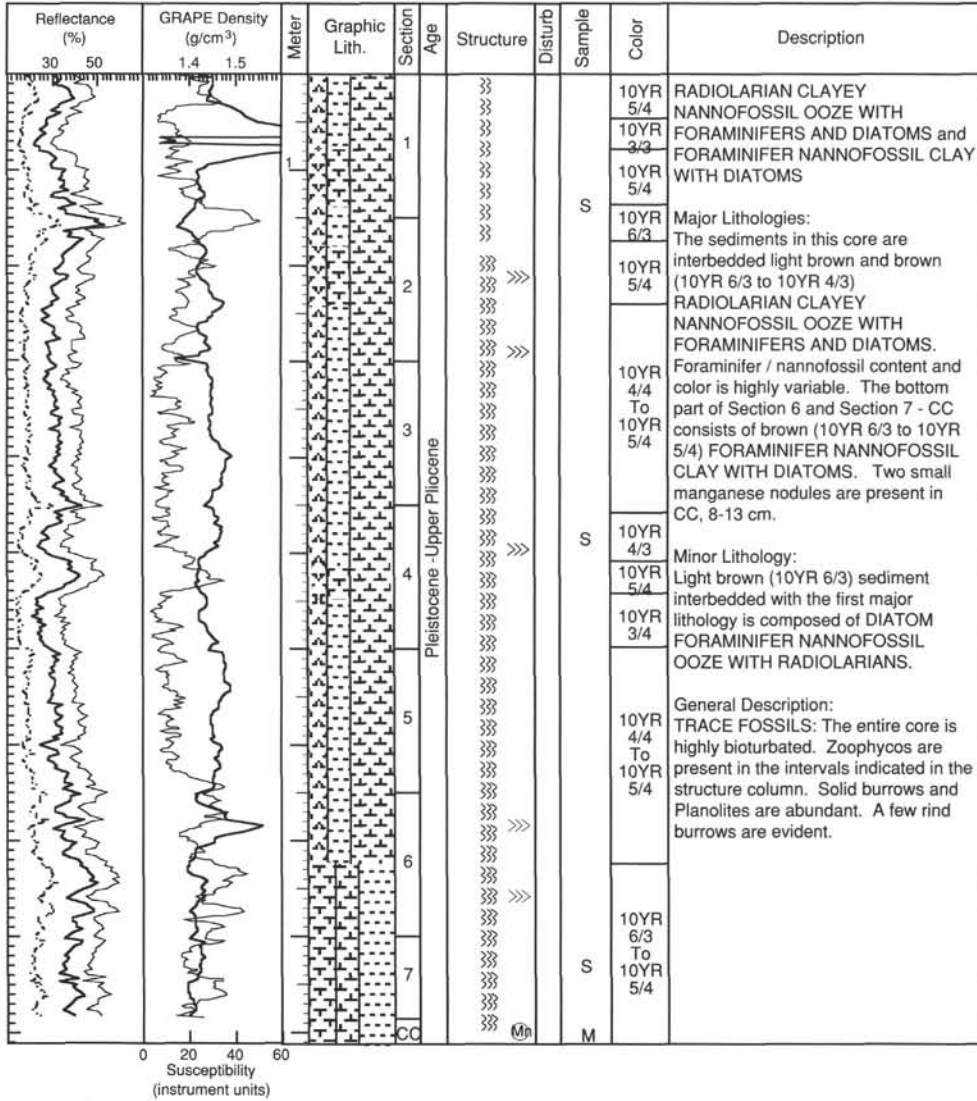


SITE 854 HOLE C CORE 1H

CORED 0.0 - 3.6 mbsf

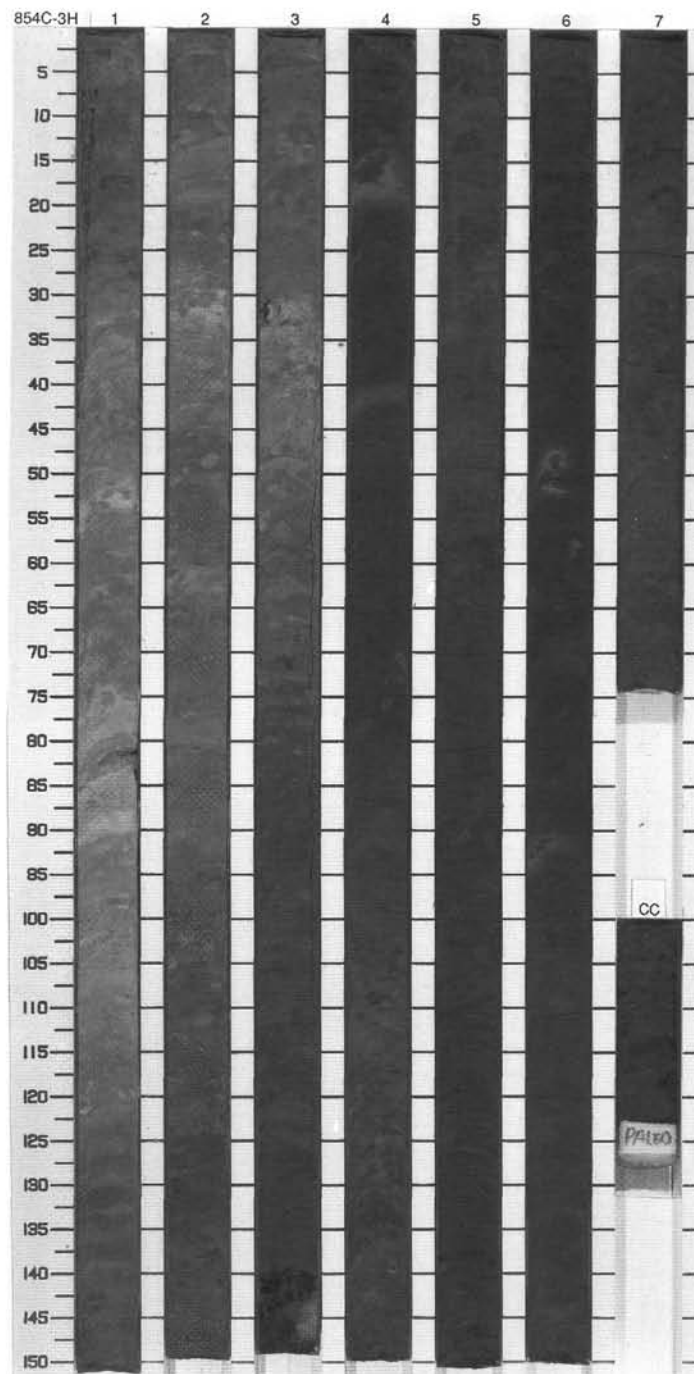
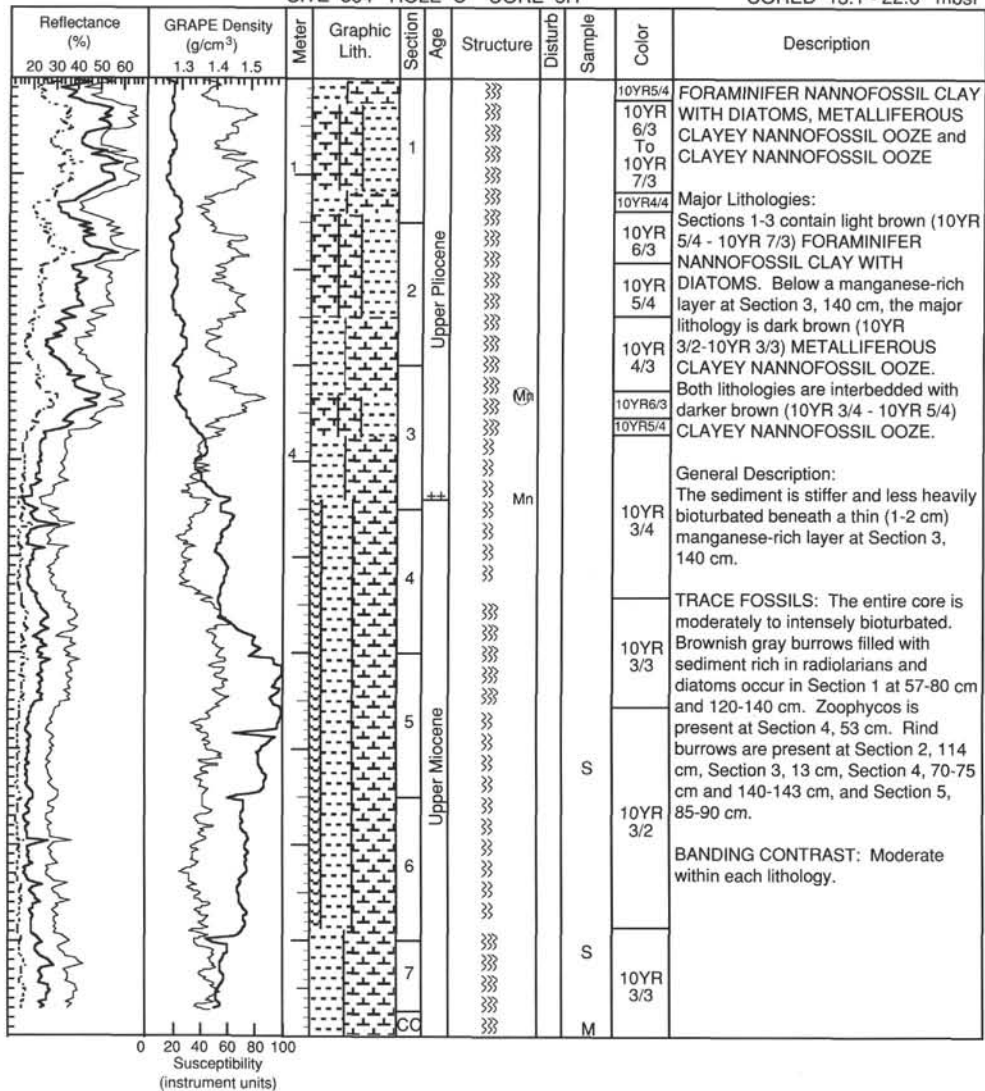


SITE 854 HOLE C CORE 2H CORED 3.6 - 13.1 mbsf

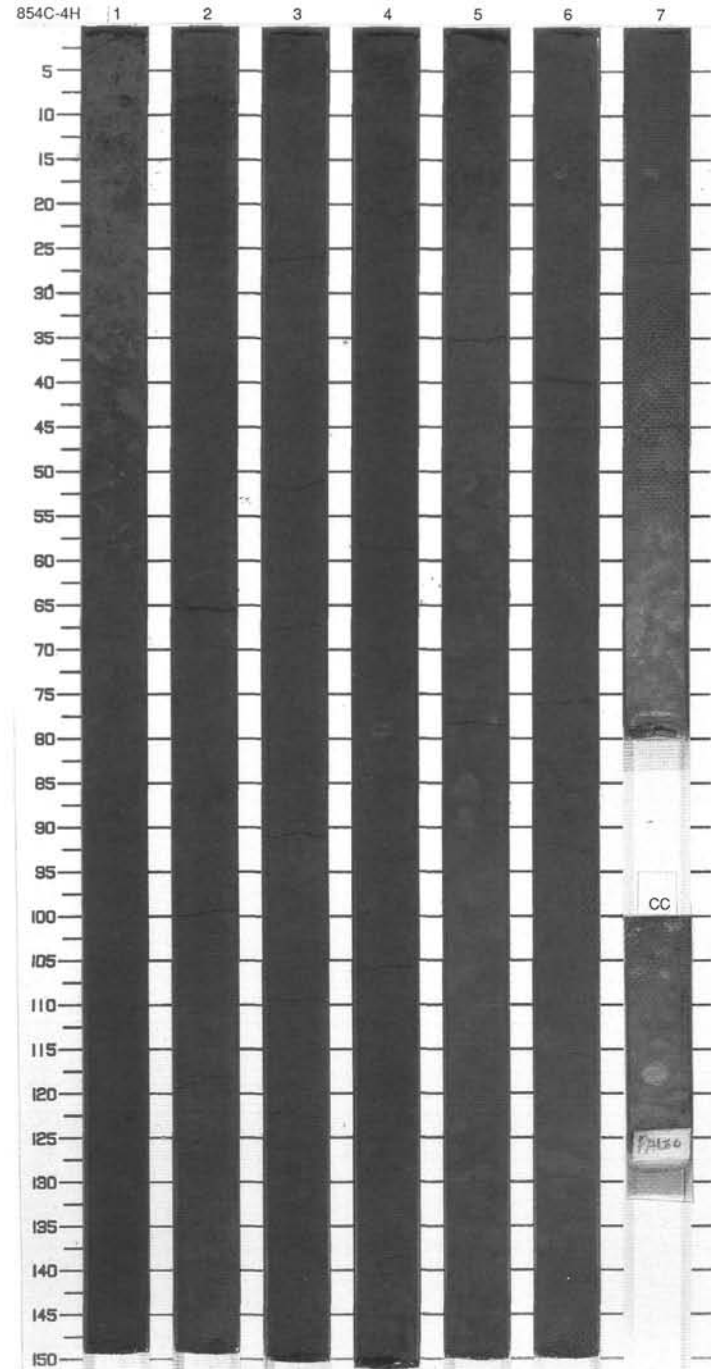
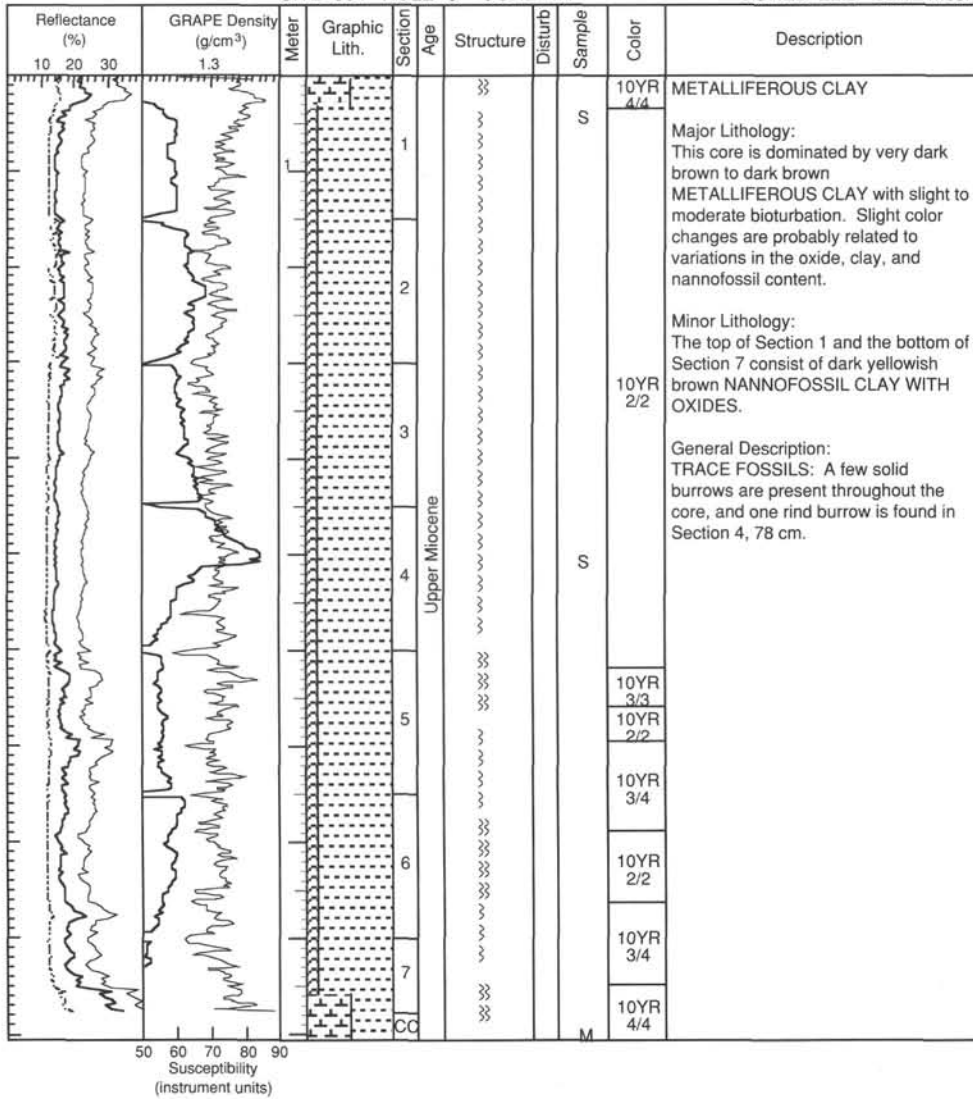


SITE 854 HOLE C CORE 3H

CORED 13.1 - 22.6 mbsf

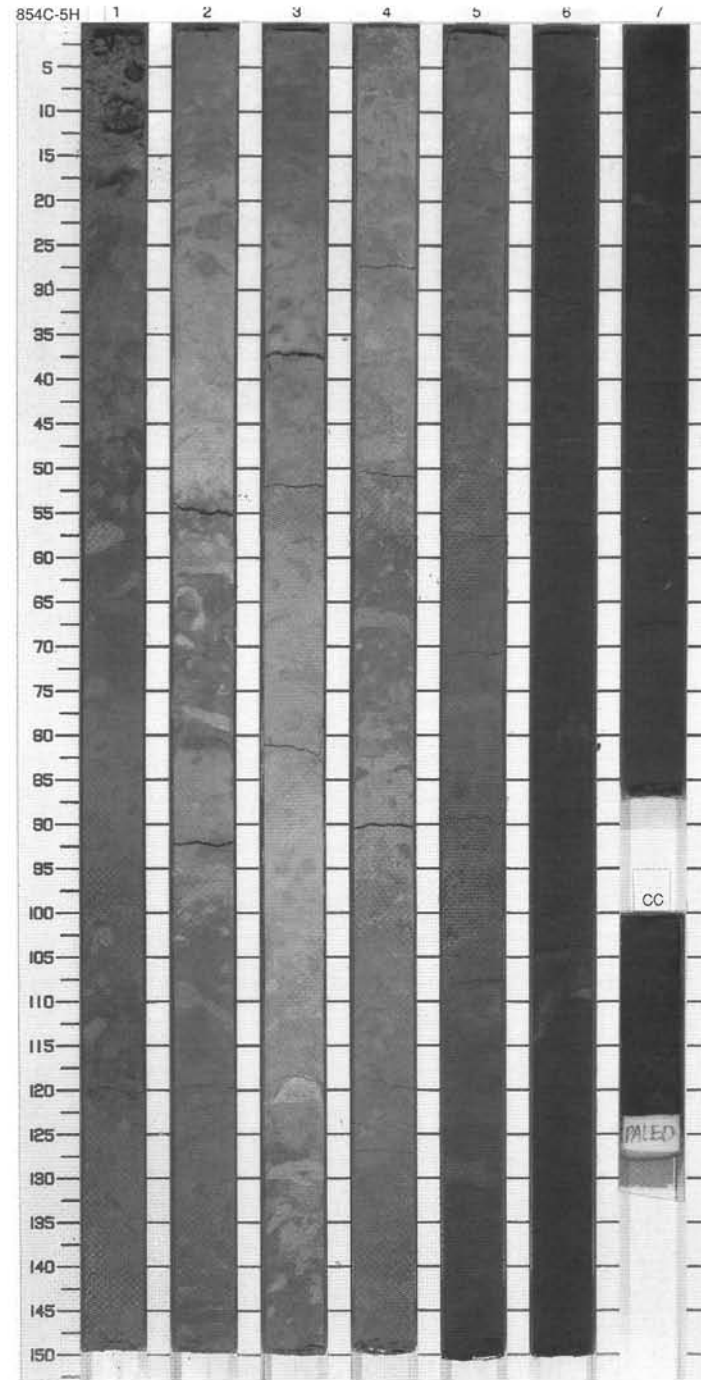
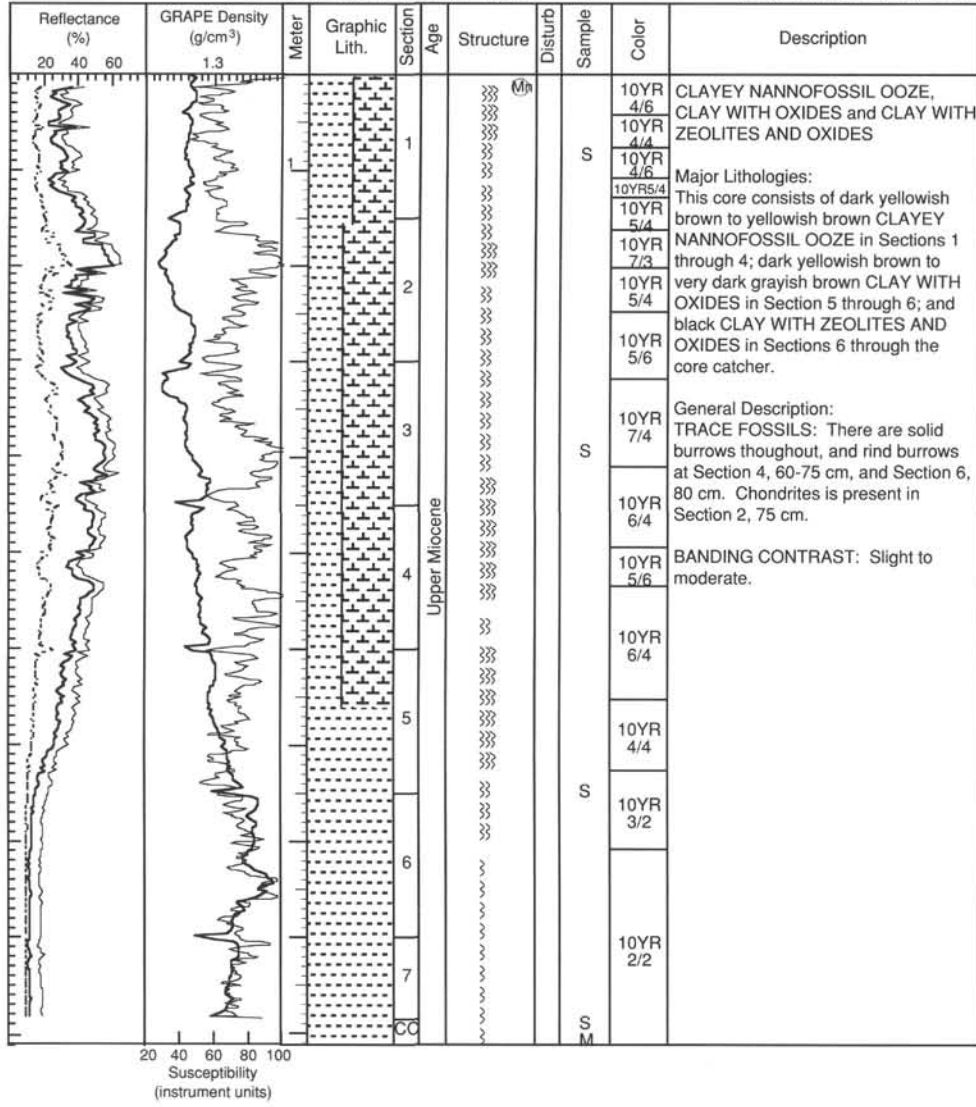


SITE 854 HOLE C CORE 4H CORED 22.6 - 32.1 mbsf



SITE 854 HOLE C CORE 5H

CORED 32.1 - 41.6 mbsf



SITE 854 HOLE C CORE 6H CORED 41.6 - 46.0 mbsf

