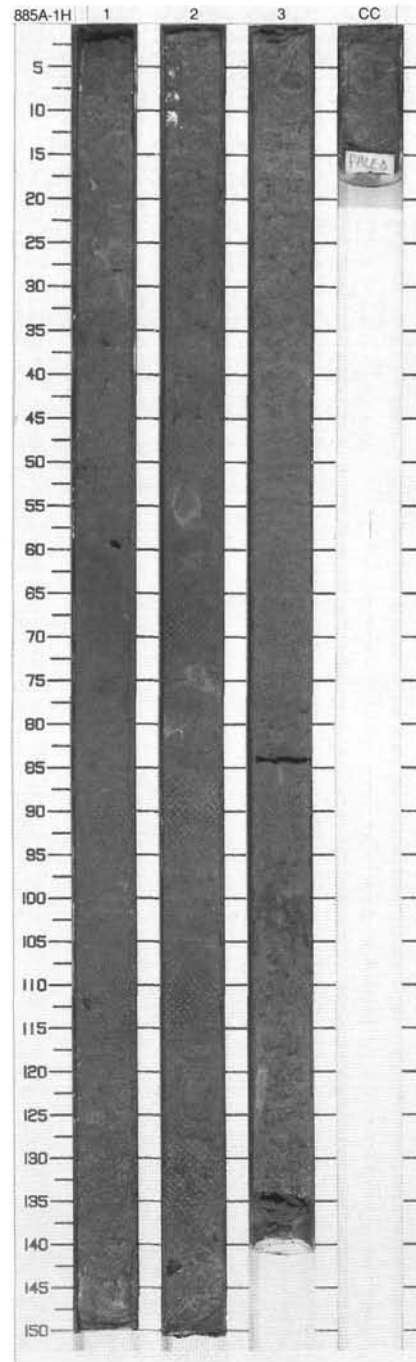


SITE 885 HOLE A CORE 1H

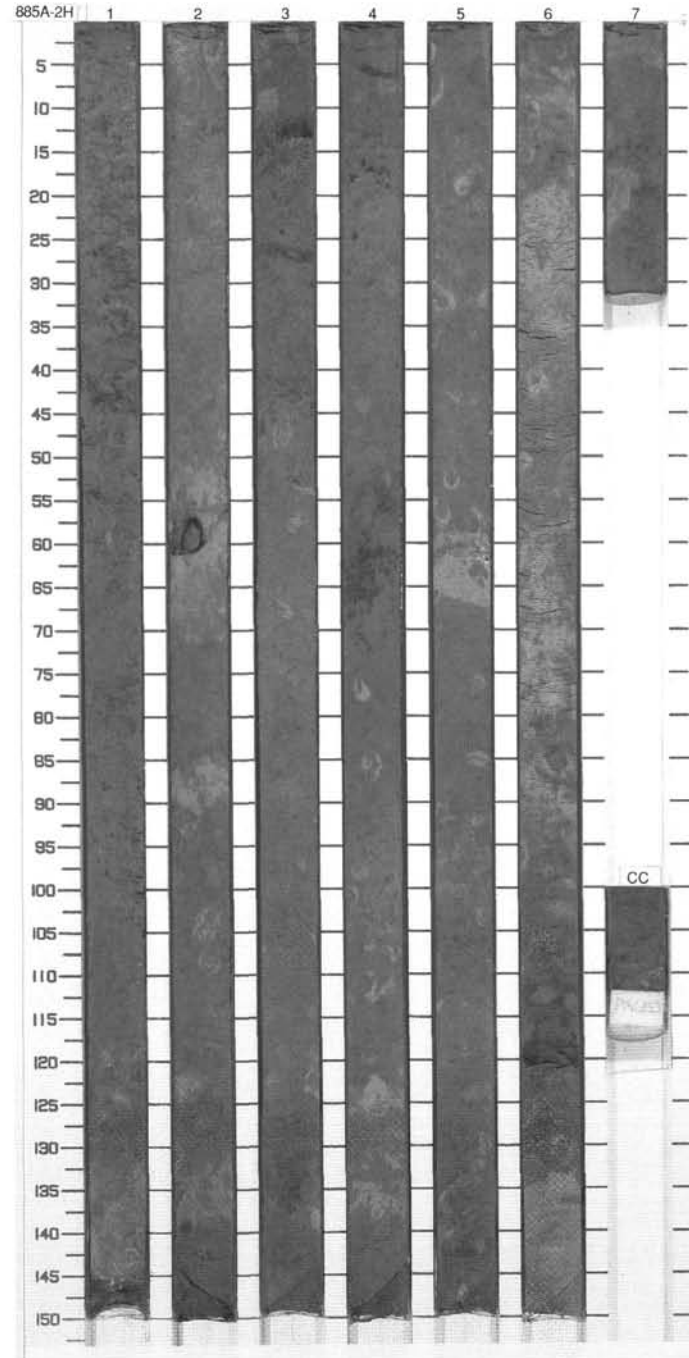
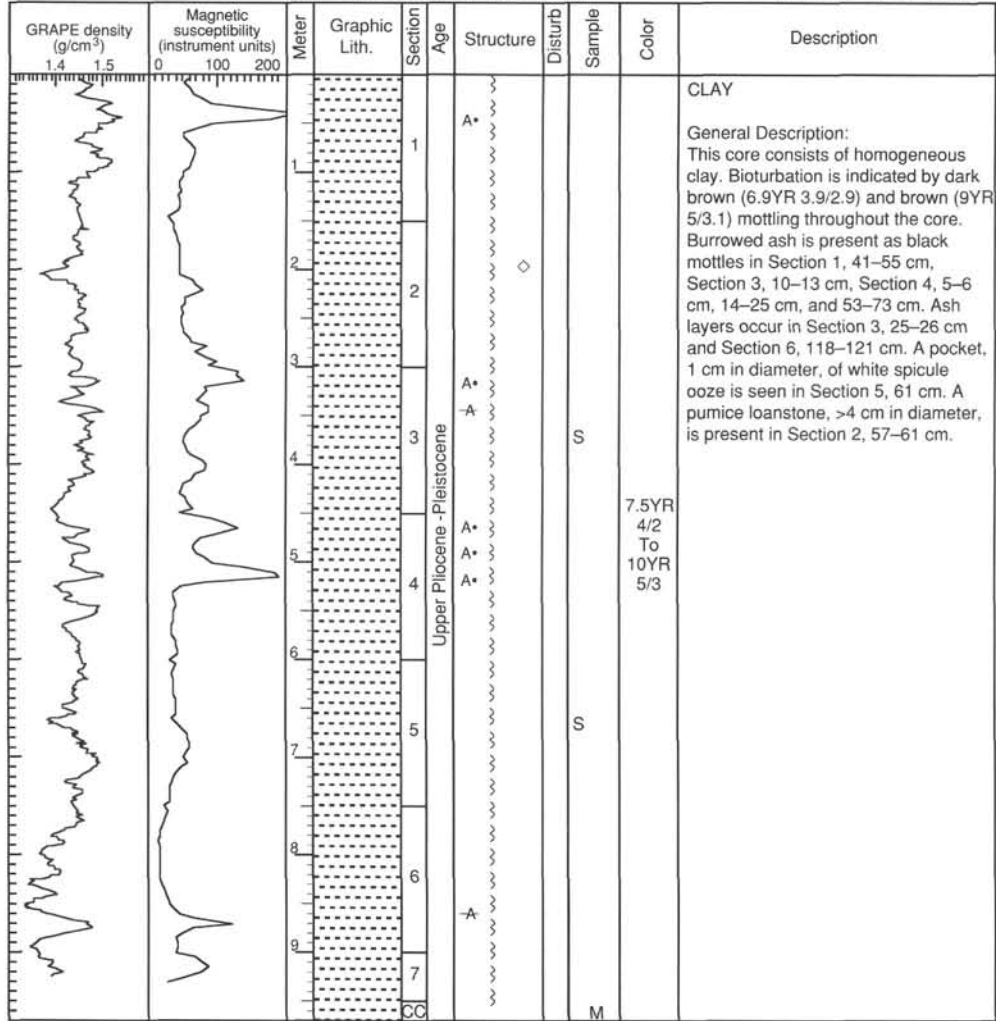
CORED 0.0 - 4.6 mbsf

GRAPE density (g/cm ³) 1.4 1.5	Magnetic susceptibility (instrument units) 50 100	Meter	Graphic Lith.	Section	Age	Structure	Disturb	Sample	Color	Description
		0		1		A*				<p>CLAY WITH DIATOMS and SPICULES</p> <p>General Description: This core consists of homogeneous bioturbated reddish brown (6.1YR 3.5/2.8) clay with diatoms and spicules; diatom clay is present in Section 3, 50–85 cm. An open burrow is present in Section 1, 59–60 cm. Ash-filled burrows are present in Section 1, 36–37 cm, Section 2, 44–45 cm and 142–145 cm, and Section 3, 95–113 cm. A concretion of agglomerated cubic (?) pyrite (?) crystals occurs in Section 1, 112–113 cm.</p>
		1		1		A*	⊙	S		
		2		2	Pleistocene	A*		S	5YR 4/3	
		3		3		A*		S		
		4		4		A*		S		
		CC		CC				M		



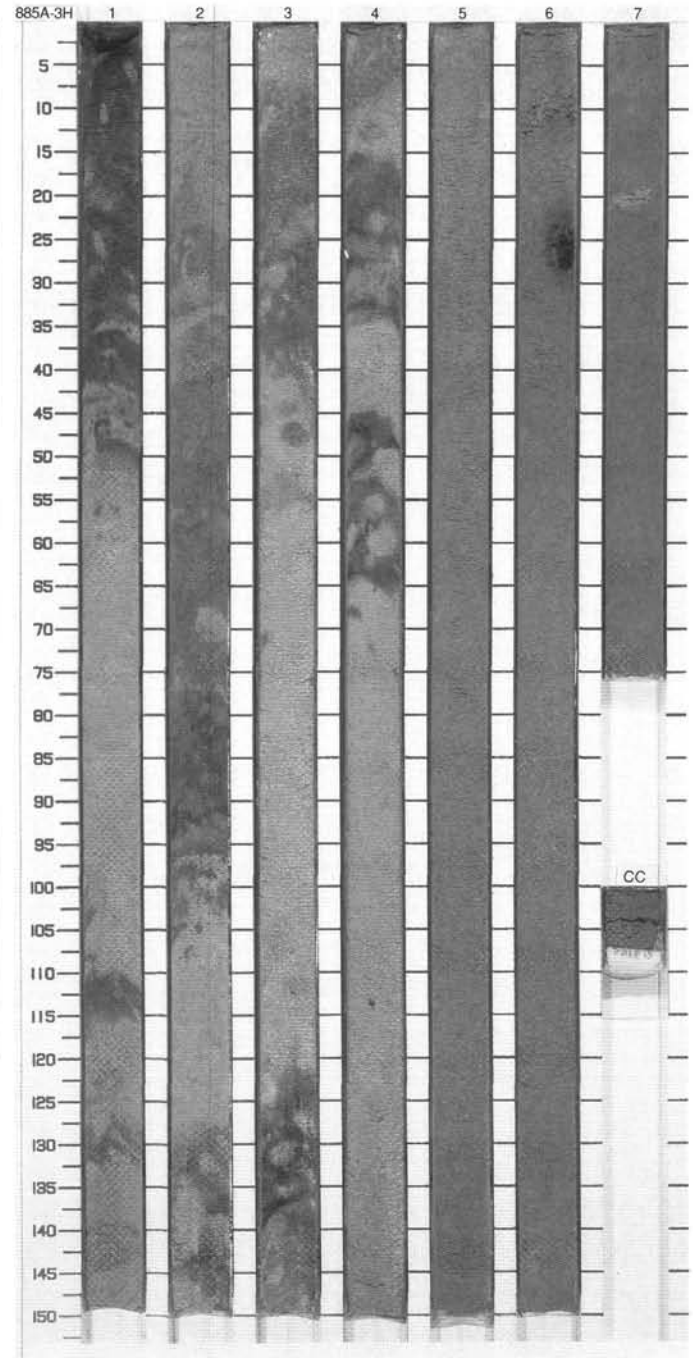
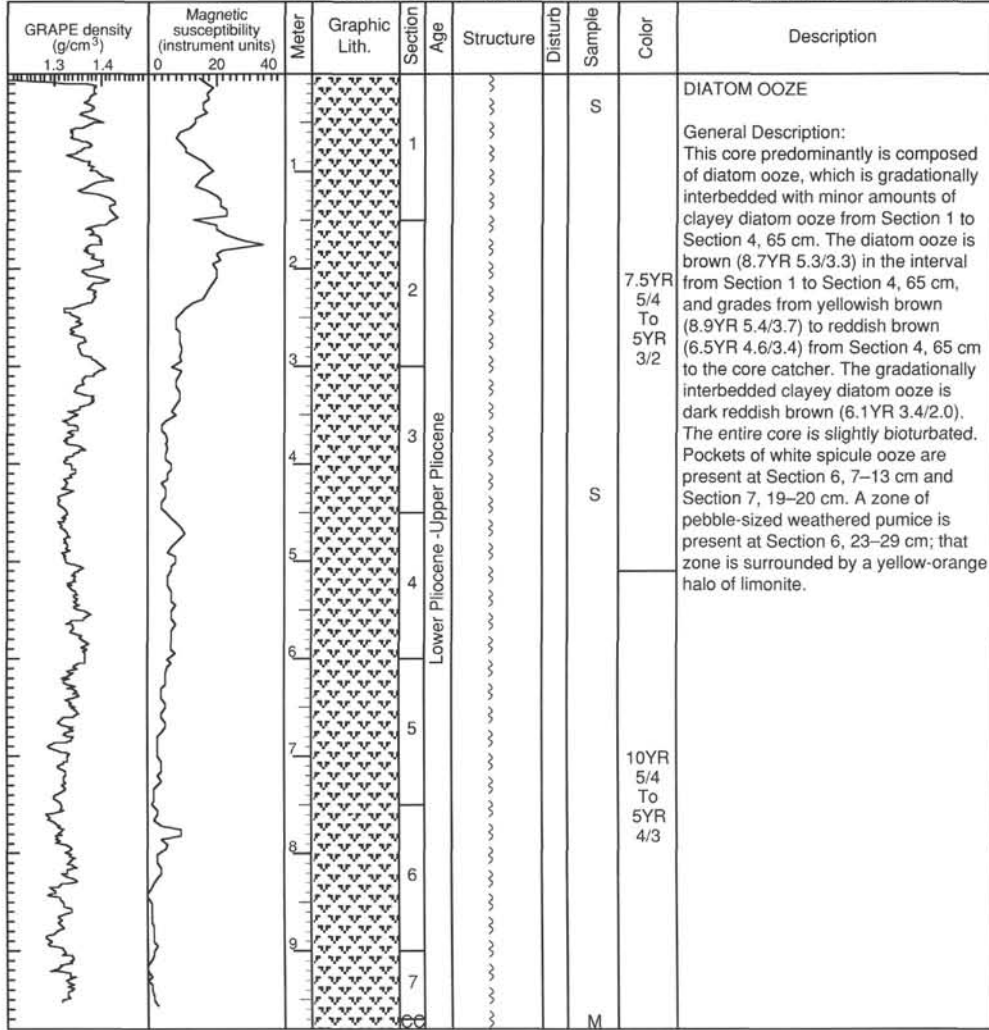
SITE 885 HOLE A CORE 2H

CORED 4.6 - 14.1 mbsf



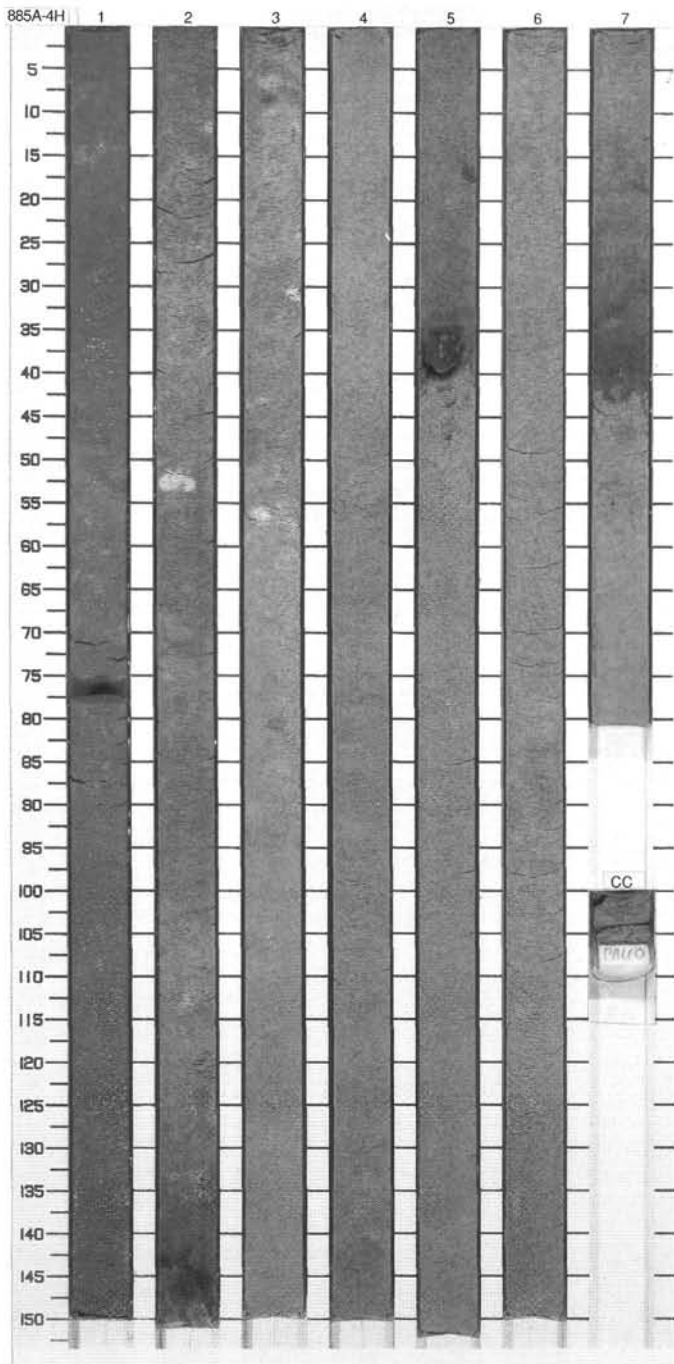
SITE 885 HOLE A CORE 3H

CORED 14.1 - 23.6 mbsf



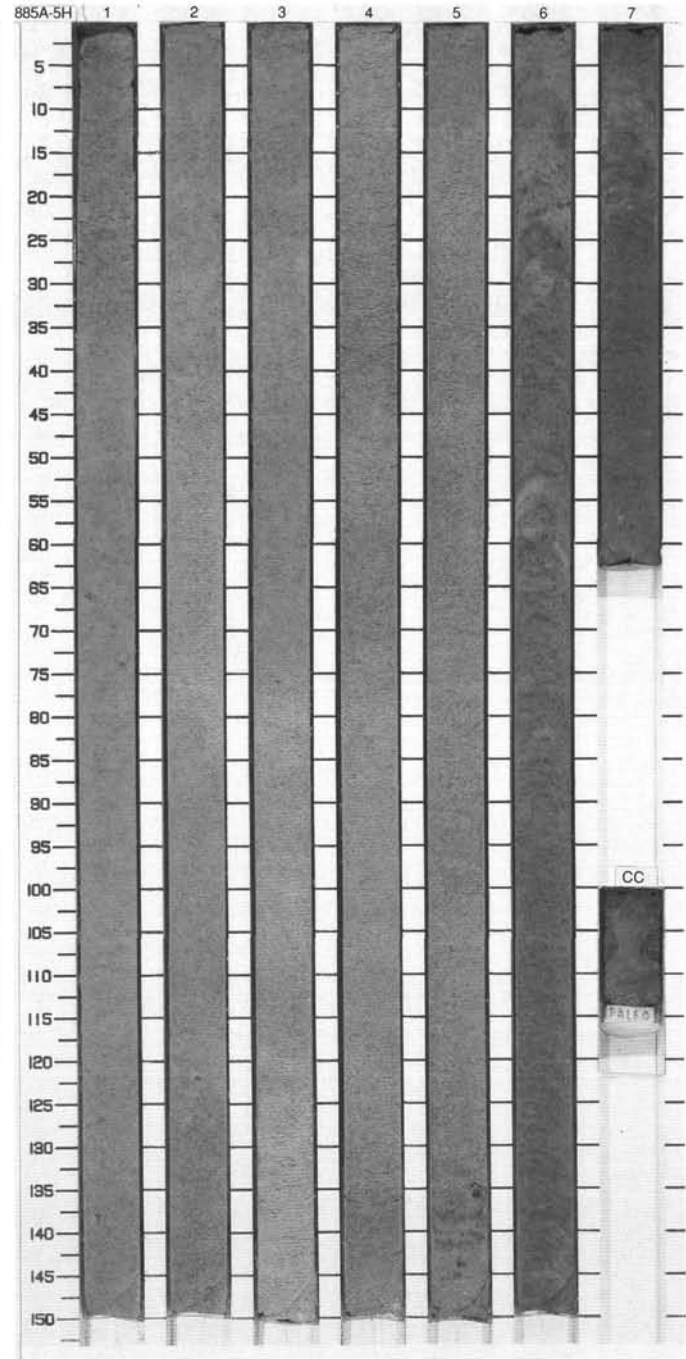
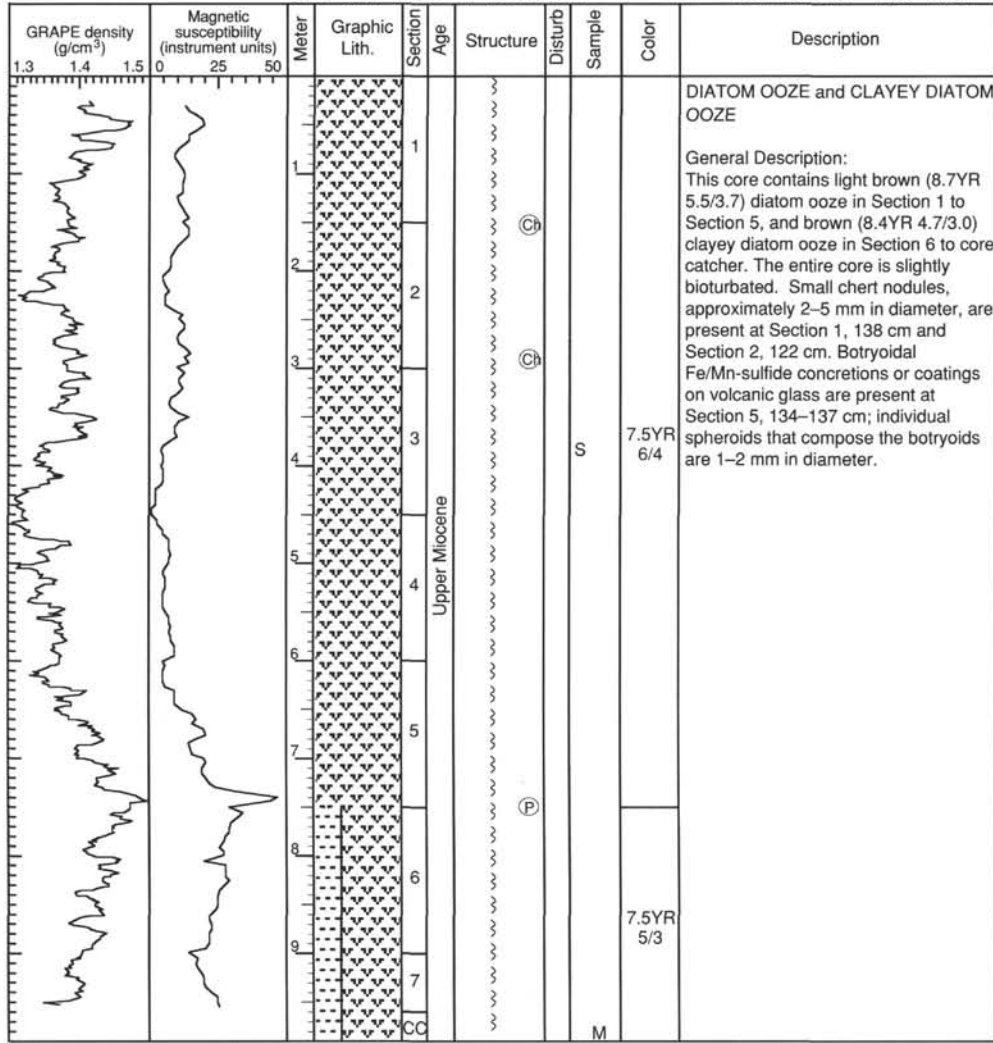
SITE 885 HOLE A CORE 4H CORED 23.6 - 33.1 mbsf

GRAPE density (g/cm ³)	Magnetic susceptibility (instrument units)	Meter	Graphic Lith.	Section	Age	Structure	Disturb	Sample	Color	Description
1.3 1.4	0 50 100									
		1		1						DIATOM OOZE General Description: This core contains relatively homogeneous diatom ooze, which grades in color between brown (6.7YR 5.1/2.9) and light yellowish brown (8.8YR 5.5/3.6). The entire core is slightly bioturbated. Small pockets of white spicule ooze, each 1-4 cm in diameter, are common in Sections 2 and 3. A botryoidal chert concretion, approximately 7 cm in diameter, is present at Section 5, 34-40 cm; this concretion displays well-developed concentric layering around multiple cores of volcanoclastic (?) material.
		2		2						
		3		3						
		4		4	Upper Miocene - Lower Pliocene					
		5		5					7.5YR 5/3 To 10YR 6/4	
		6		6						
		7		7						
										M

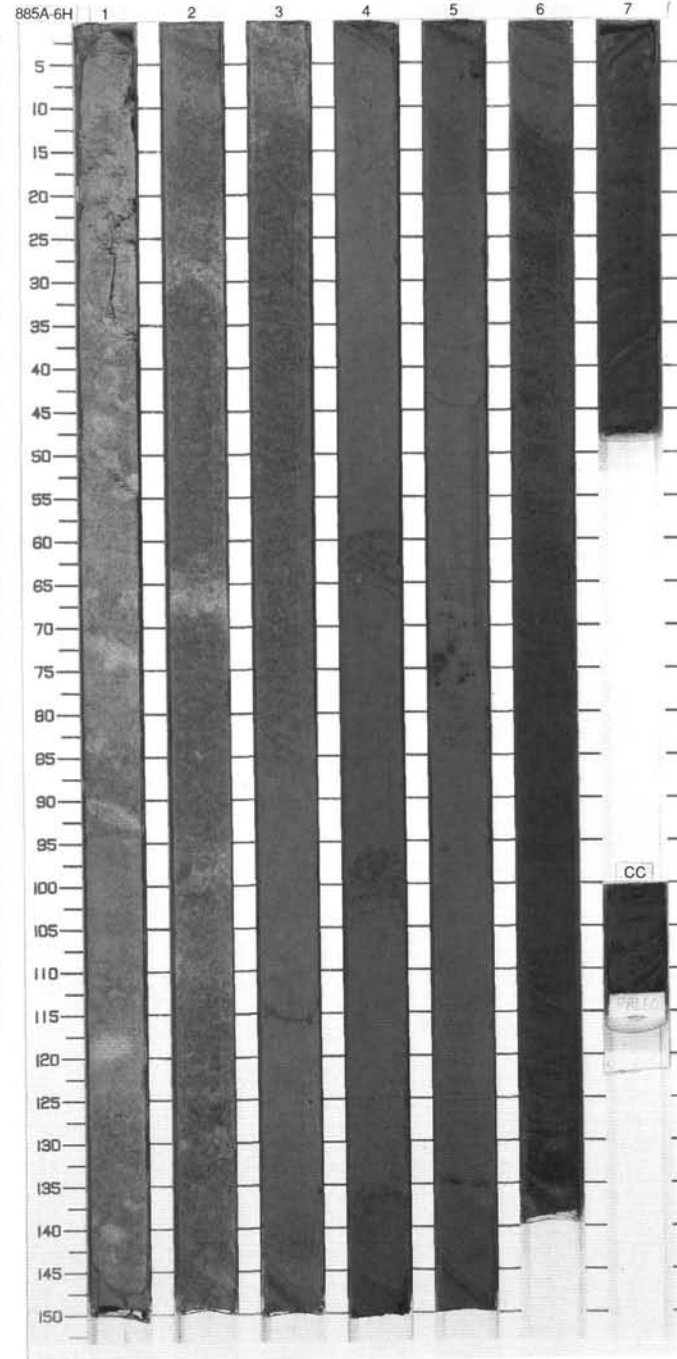
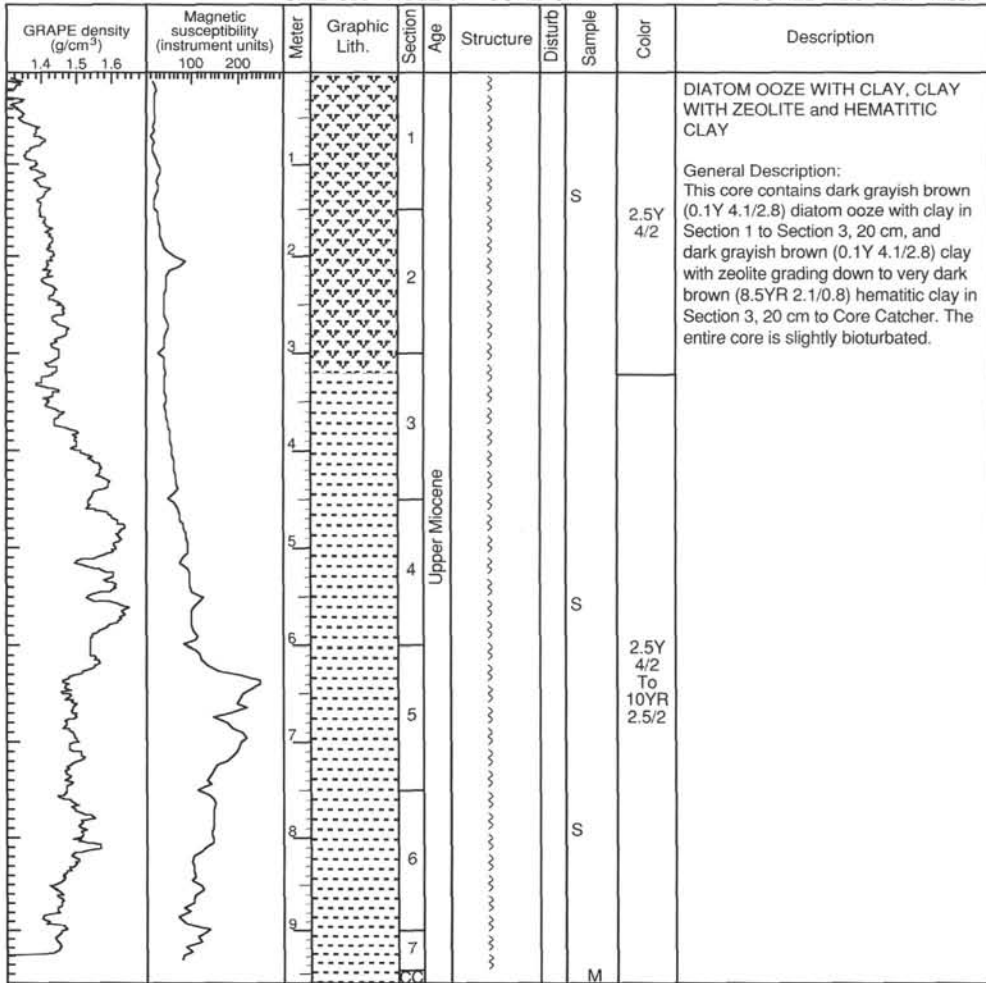


SITE 885 HOLE A CORE 5H

CORED 33.1 - 42.6 mbsf

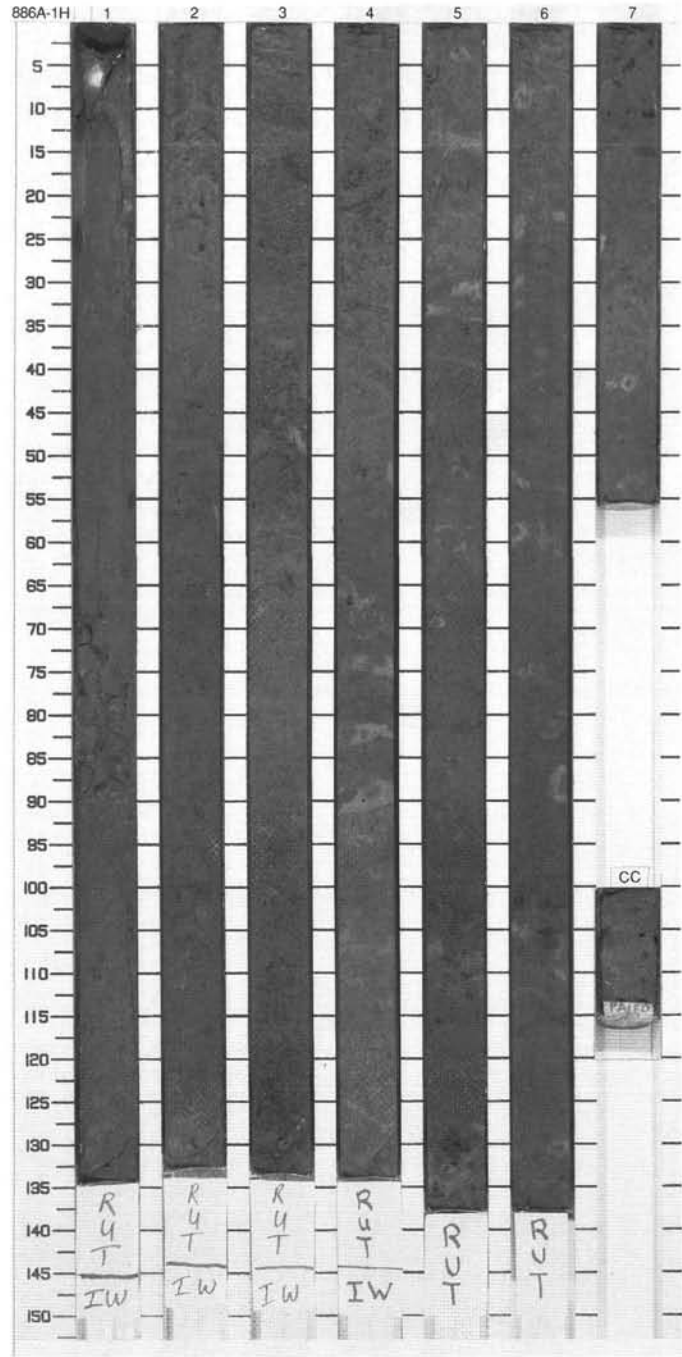
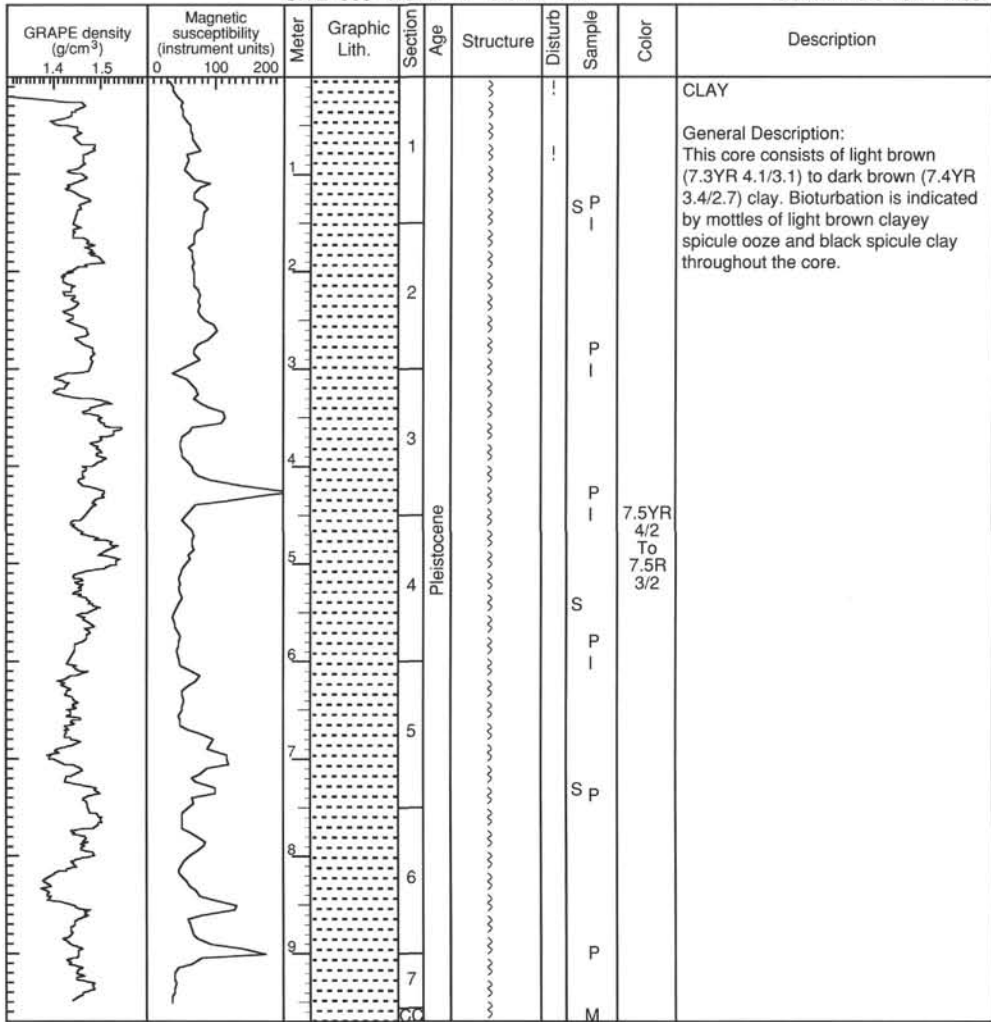


SITE 885 HOLE A CORE 6H CORED 42.6 - 52.1 mbsf



885A 7H Hard Rock

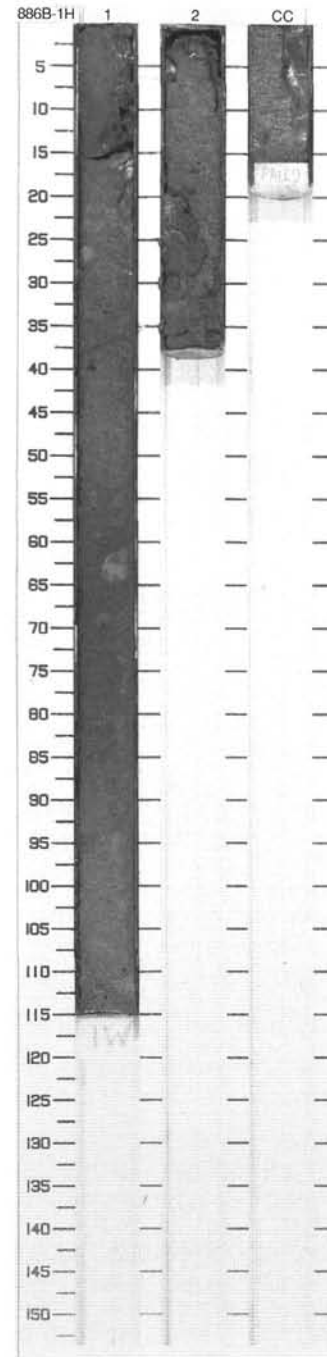
885A 8X Hard Rock



SITE 886 HOLE B CORE 1H

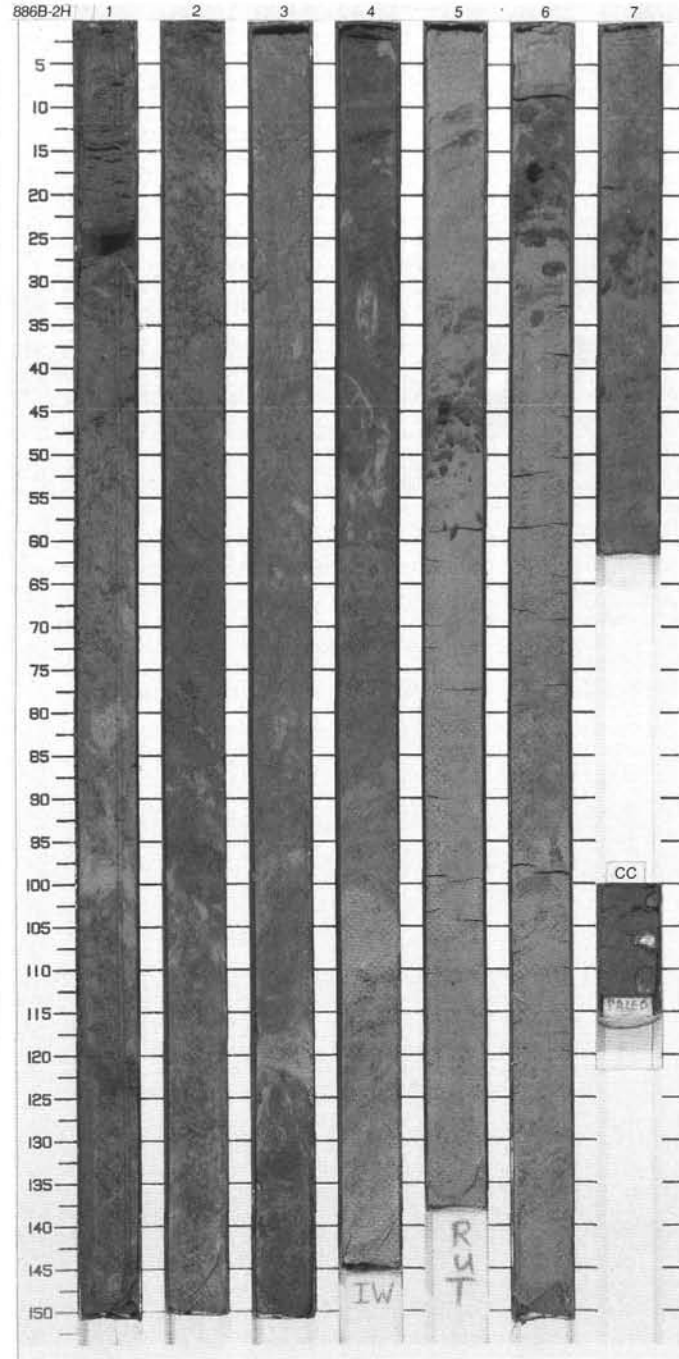
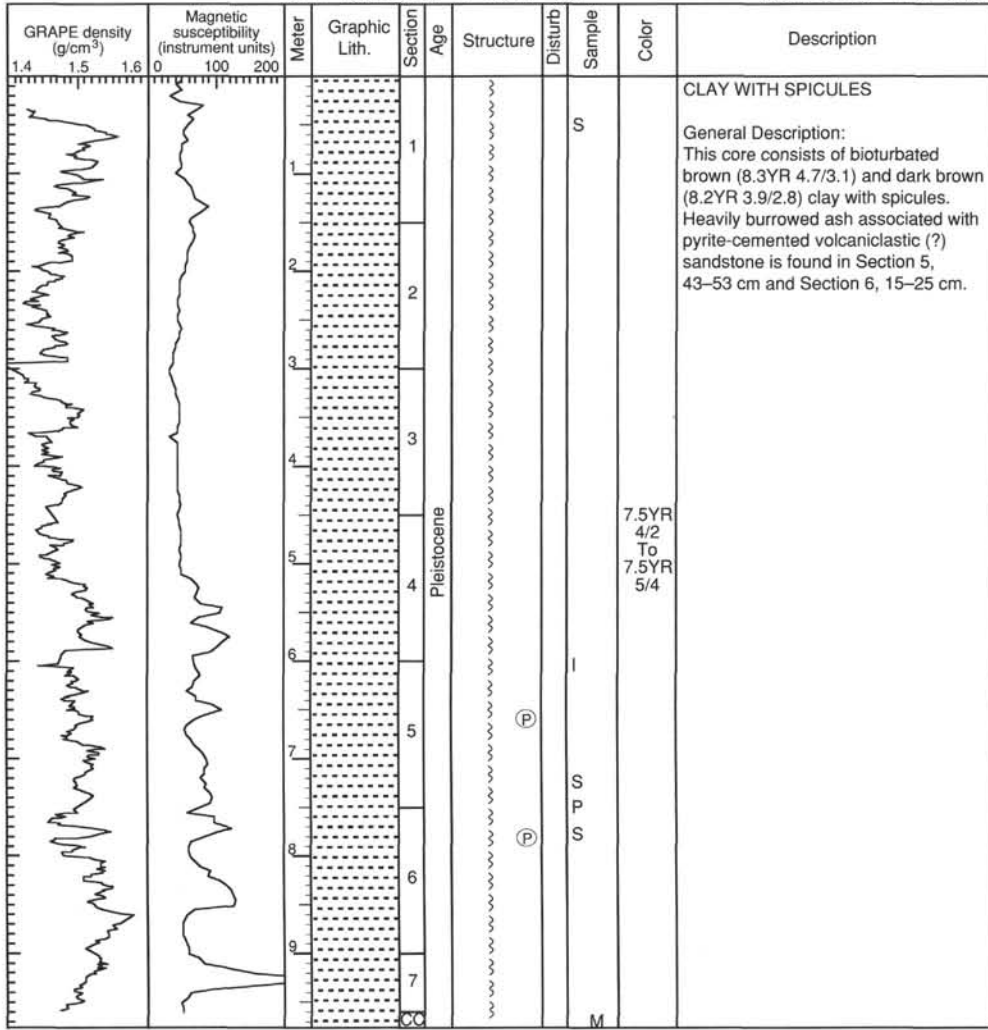
CORED 0.0 - 1.8 mbsf

Magnetic susceptibility (instrument units)	Meter	Graphic Lith.	Section	Age	Structure	Disturb	Sample	Color	Description
0 50 100			1	Pleistocene			S	5YR 4/3	DIATOM CLAY General Description: This core contains homogeneous, slightly bioturbated, brown to reddish brown (6.3YR 3.8/3.1) diatom clay.
			2				I		
			CC				M		



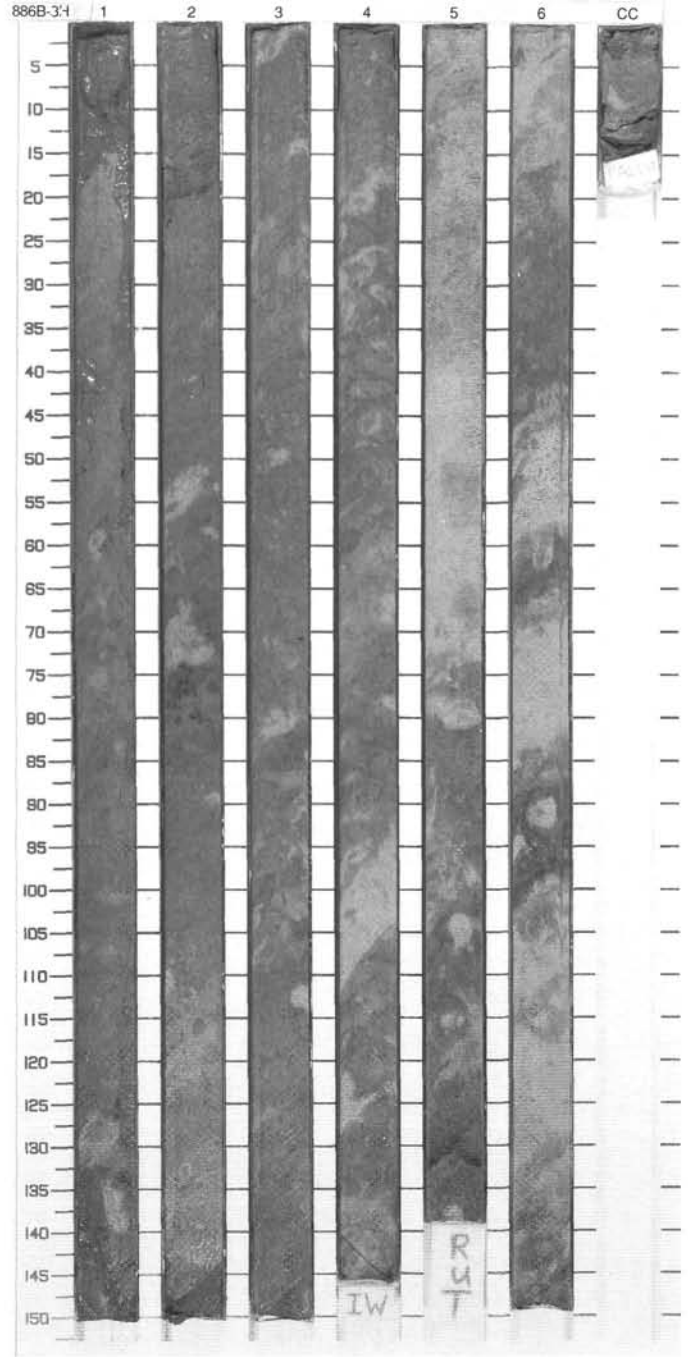
SITE 886 HOLE B CORE 2H

CORED 1.8 - 11.3 mbsf

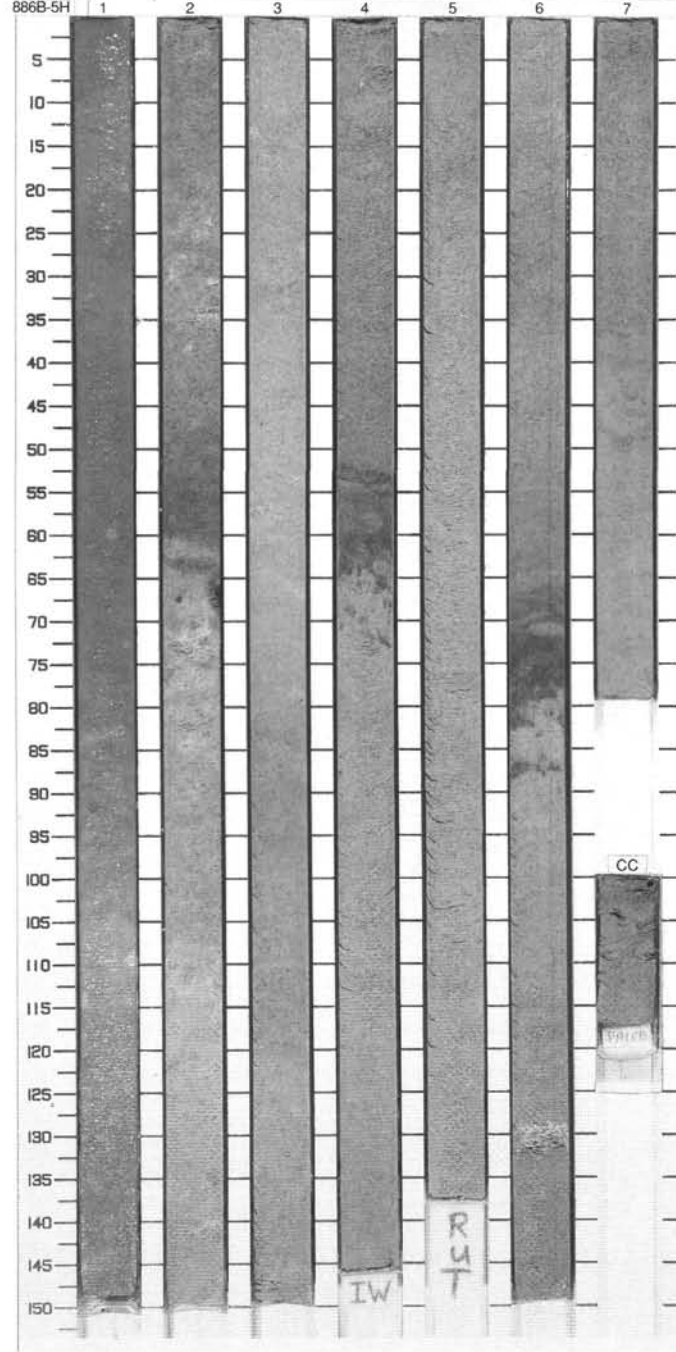
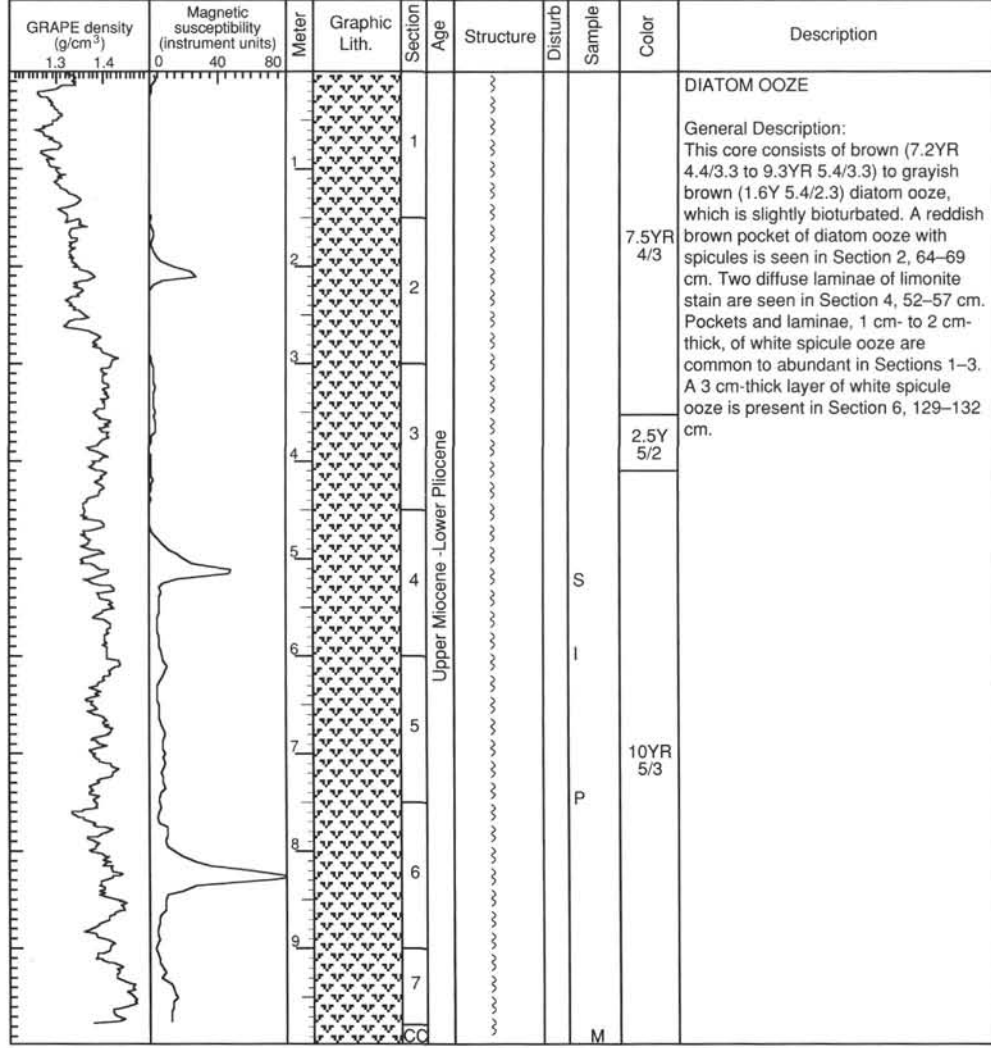


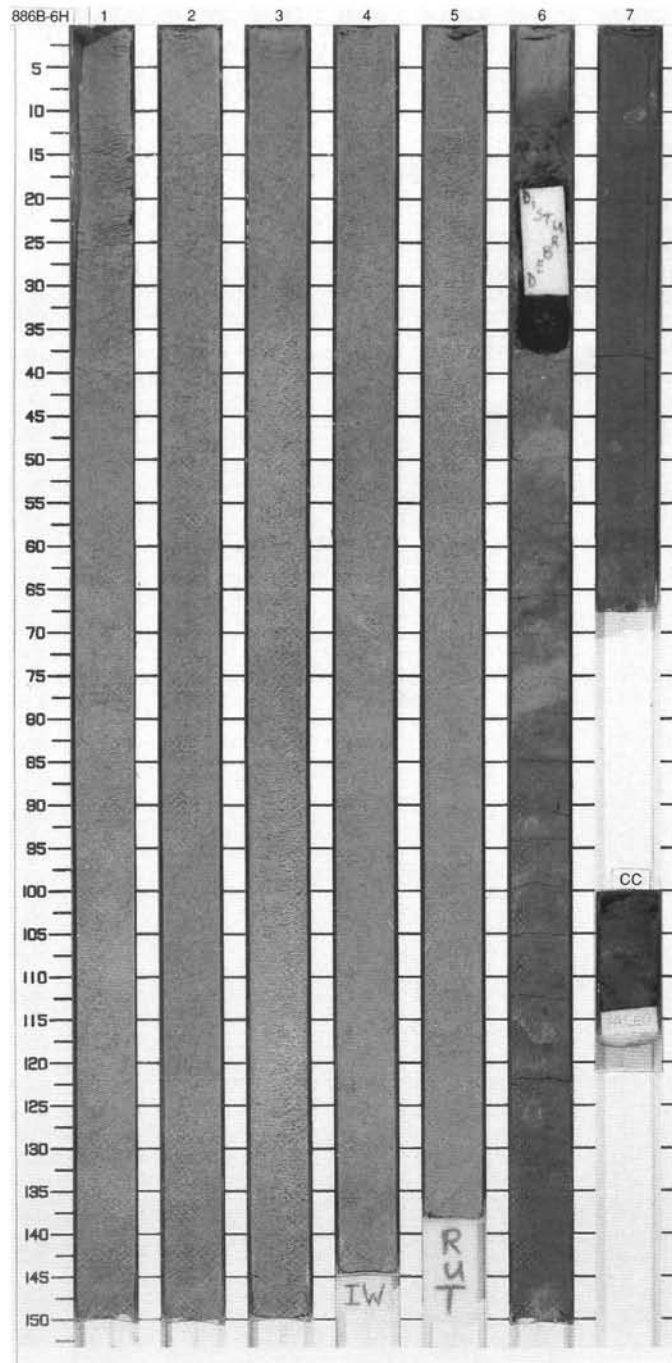
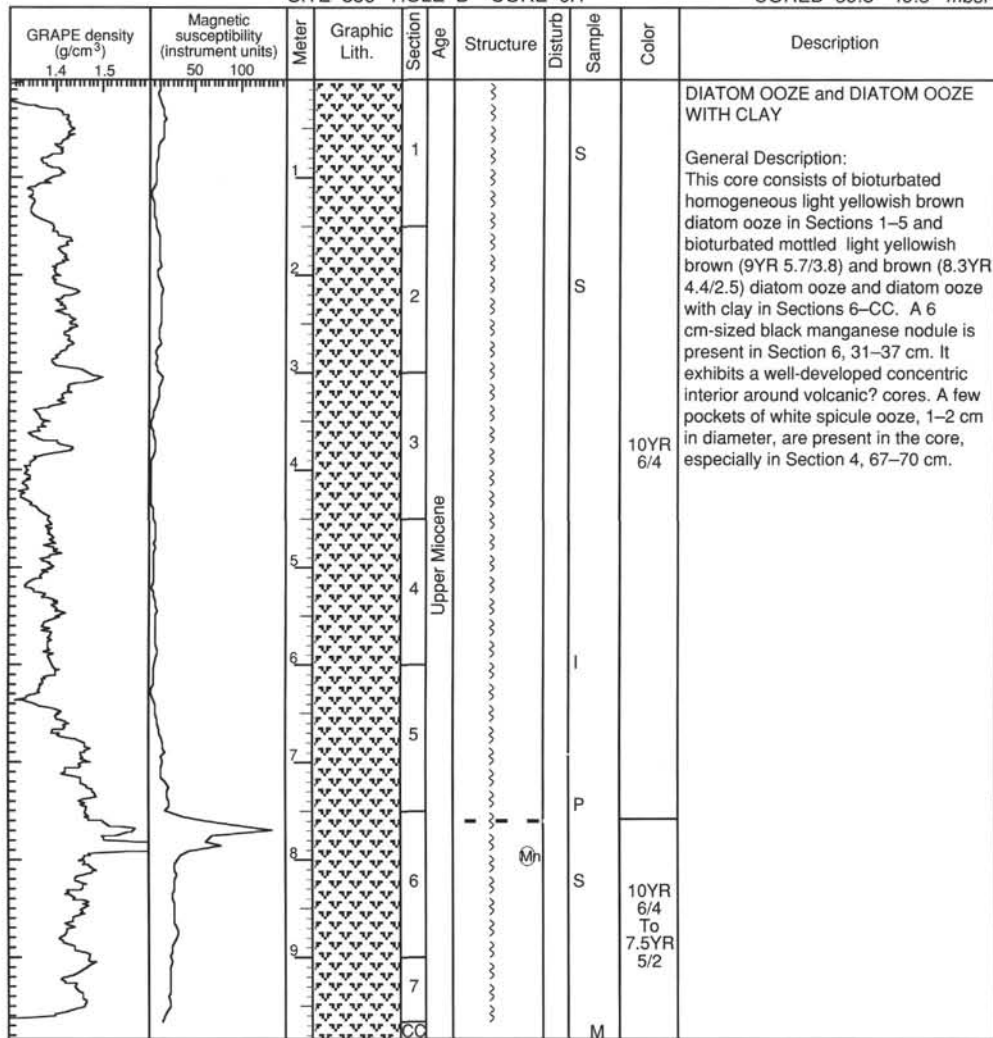
SITE 886 HOLE B CORE 3H CORED 11.3 - 20.8 mbsf

GRAPE density (g/cm ³) 1.4 1.5	Magnetic susceptibility (instrument units) 50 100	Meter	Graphic Lith.	Section	Age	Structure	Disturb	Sample	Color	Description
<p>CLAY WITH SPICULES</p> <p>General Description: This core is composed of brown (8.6YR 5.2/3.3) and dark brown (7.4YR 3.9/2.8) bioturbated clay with spicules. Dark gray burrowed ash zones are present in Section 2, 14–20 cm and 74–81 cm, and Section 5, 132–133 cm. Several small (1–2 cm in diameter) pockets of white spicule ooze are observed in Sections 5 and 6.</p>										
		1		1						
		2		2		A*				
		3		3		A*				
		4		3				S	10YR 5/3 To 7.5YR N2/0	
		5		4	Upper Pliocene					
		6		5						
		7		6				I		
		8		5						
		9		6		A*		P		
		10		6						
		11		6						
		12		6						
		13		6						
		14		6						
		15		6						
		16		6						
		17		6						
		18		6						
		19		6						
		20		6						
		21		6						
		22		6						
		23		6						
		24		6						
		25		6						
		26		6						
		27		6						
		28		6						
		29		6						
		30		6						
		31		6						
		32		6						
		33		6						
		34		6						
		35		6						
		36		6						
		37		6						
		38		6						
		39		6						
		40		6						
		41		6						
		42		6						
		43		6						
		44		6						
		45		6						
		46		6						
		47		6						
		48		6						
		49		6						
		50		6						
		51		6						
		52		6						
		53		6						
		54		6						
		55		6						
		56		6						
		57		6						
		58		6						
		59		6						
		60		6						
		61		6						
		62		6						
		63		6						
		64		6						
		65		6						
		66		6						
		67		6						
		68		6						
		69		6						
		70		6						
		71		6						
		72		6						
		73		6						
		74		6						
		75		6						
		76		6						
		77		6						
		78		6						
		79		6						
		80		6						
		81		6						
		82		6						
		83		6						
		84		6						
		85		6						
		86		6						
		87		6						
		88		6						
		89		6						
		90		6						
		91		6						
		92		6						
		93		6						
		94		6						
		95		6						
		96		6						
		97		6						
		98		6						
		99		6						
		100		6						
		101		6						
		102		6						
		103		6						
		104		6						
		105		6						
		106		6						
		107		6						
		108		6						
		109		6						
		110		6						
		111		6						
		112		6						
		113		6						
		114		6						
		115		6						
		116		6						
		117		6						
		118		6						
		119		6						
		120		6						
		121		6						
		122		6						
		123		6						
		124		6						
		125		6						
		126		6						
		127		6						
		128		6						
		129		6						
		130		6						
		131		6						
		132		6						
		133		6						
		134		6						
		135		6						
		136		6						
		137		6						
		138		6						
		139		6						
		140		6						
		141		6						
		142		6						
		143		6						
		144		6						
		145		6						
		146		6						
		147		6						
		148		6						
		149		6						
		150		6						

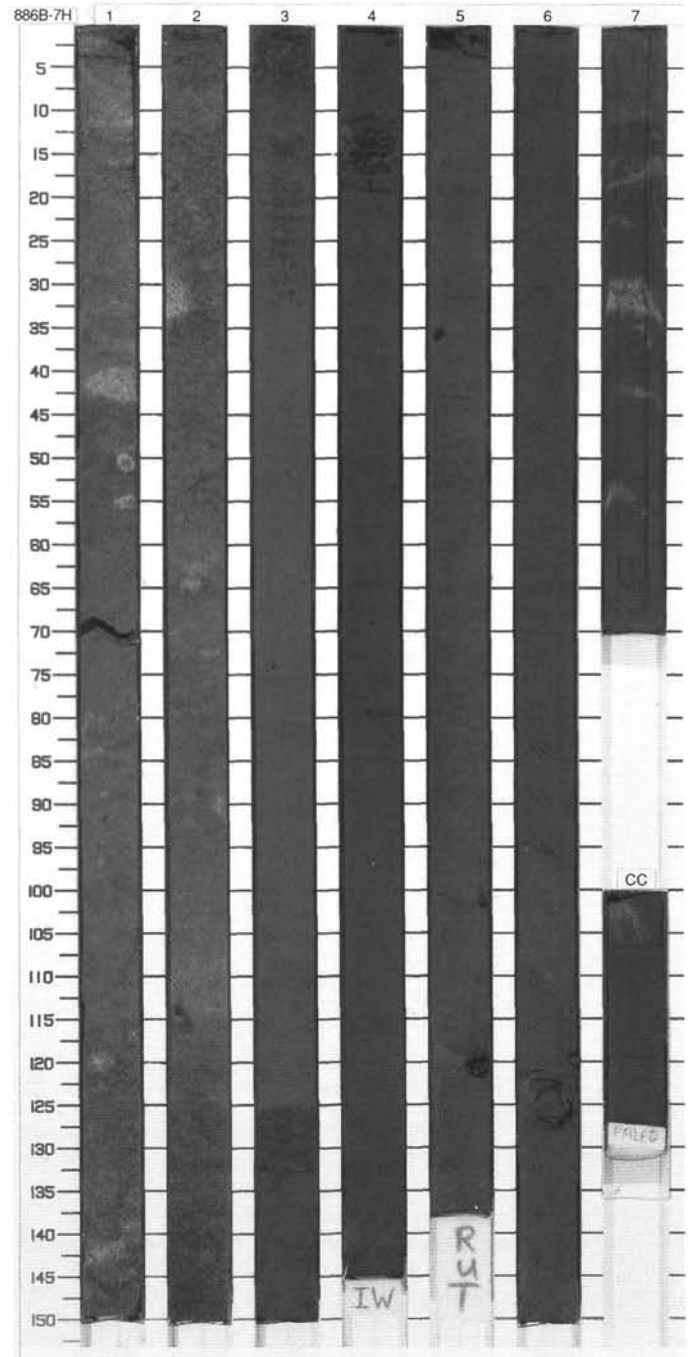
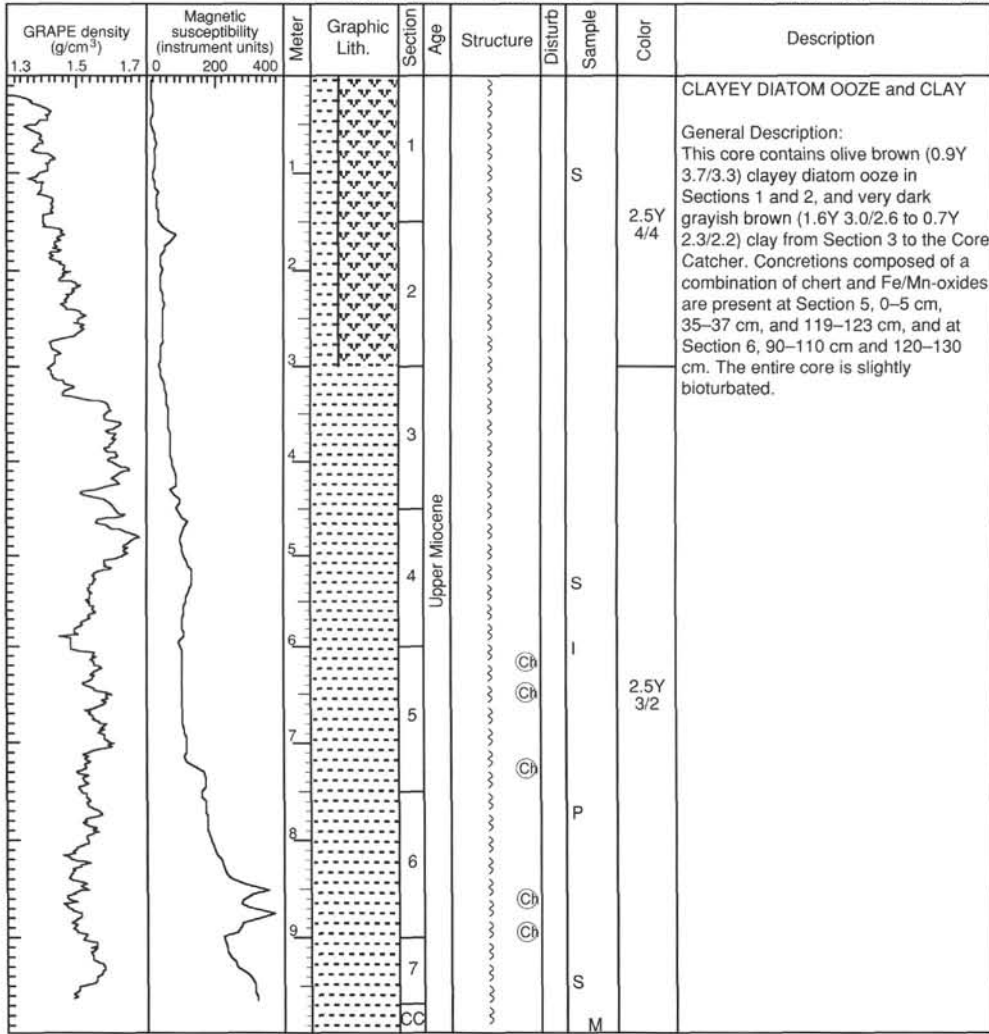


SITE 886 HOLE B CORE 5H CORED 30.3 - 39.8 mbsf






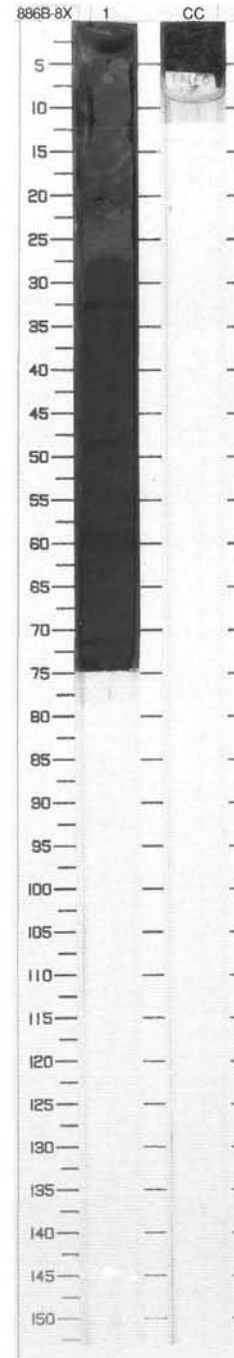
SITE 886 HOLE B CORE 7H CORED 49.3 - 58.8 mbsf



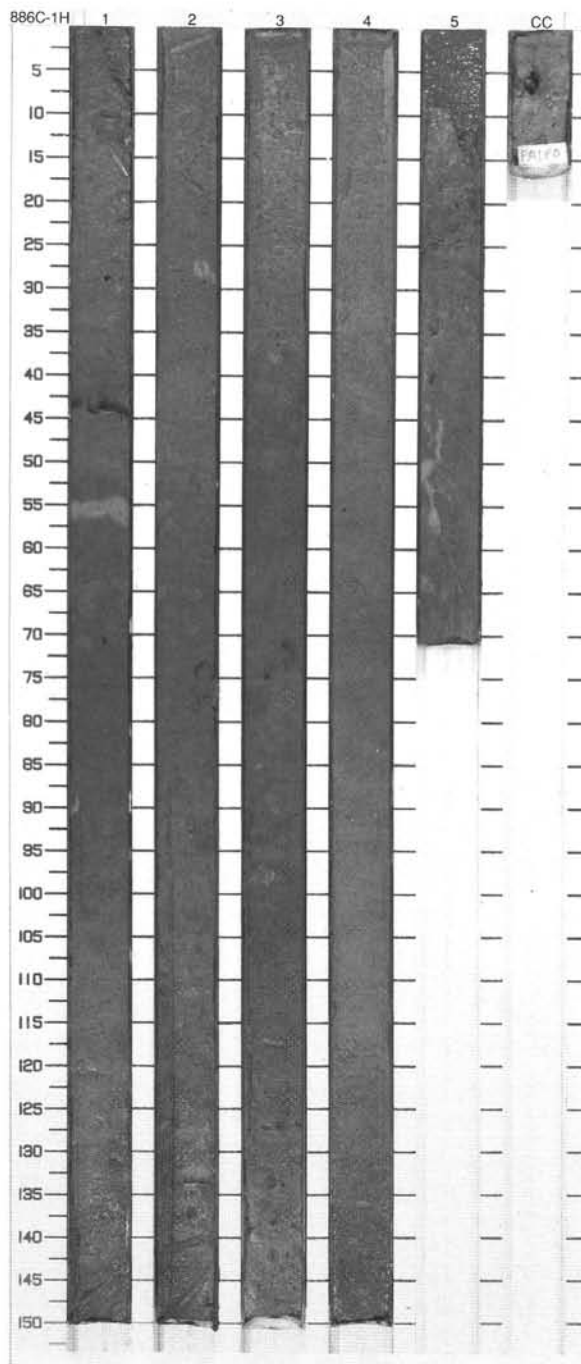
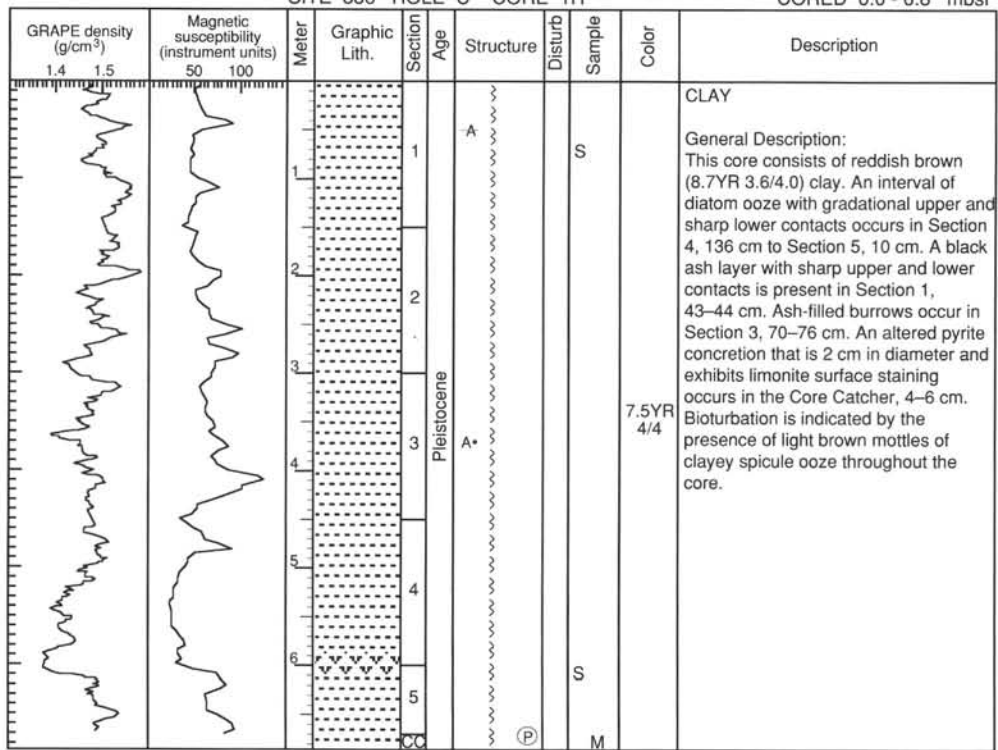
SITE 886 HOLE B CORE 8X CORED 58.8 - 68.5 mbsf

Meter	Graphic Lith.	Section	Age	Structure	Disturb	Sample	Color	Description
		1		Ch		2.5Y 3/3		CLAY AND HEMATITE CLAY General Description: This core consists of dark grayish brown (1.7Y 2.7/2.8) clay in Section 1, 0-27 cm and very dark brown hematite clay in Section 1, 27 cm to core catcher. A chert/Fe-oxide nodule is present in Section 1, 20-23 cm.
		86			S M	7.5YR 3/2		

886B 9X Hard Rock

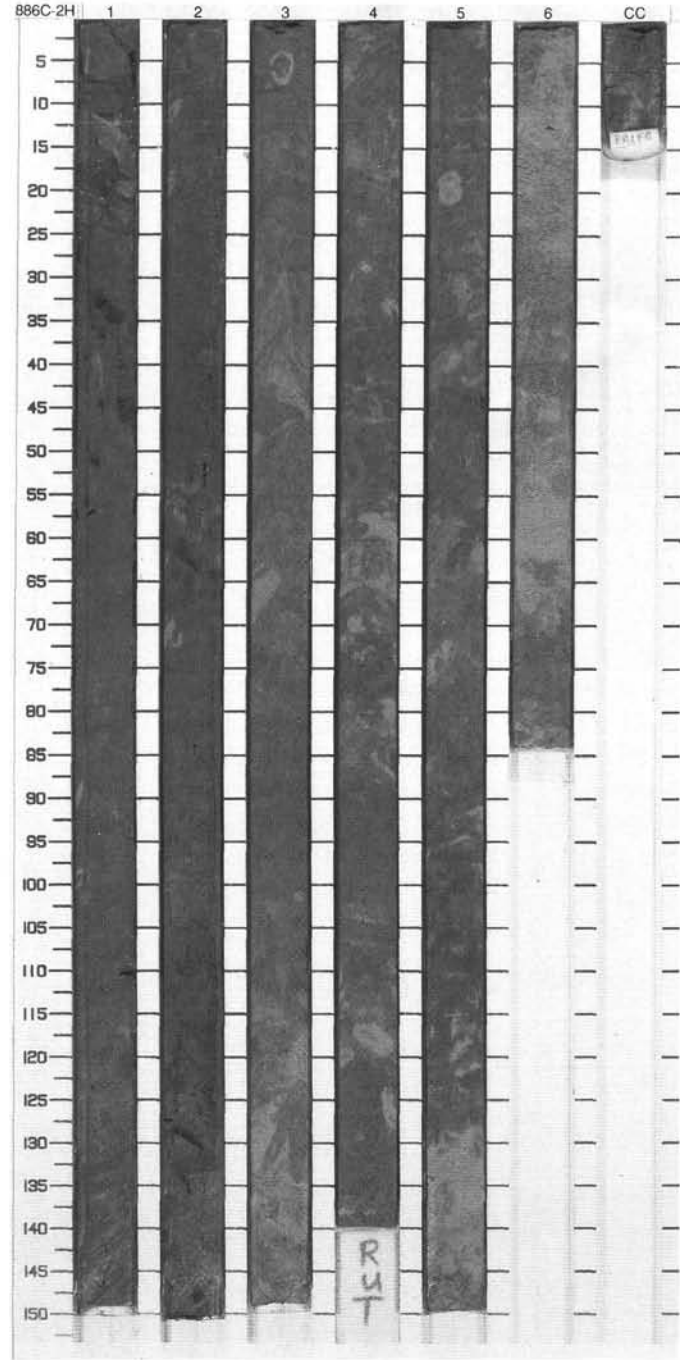
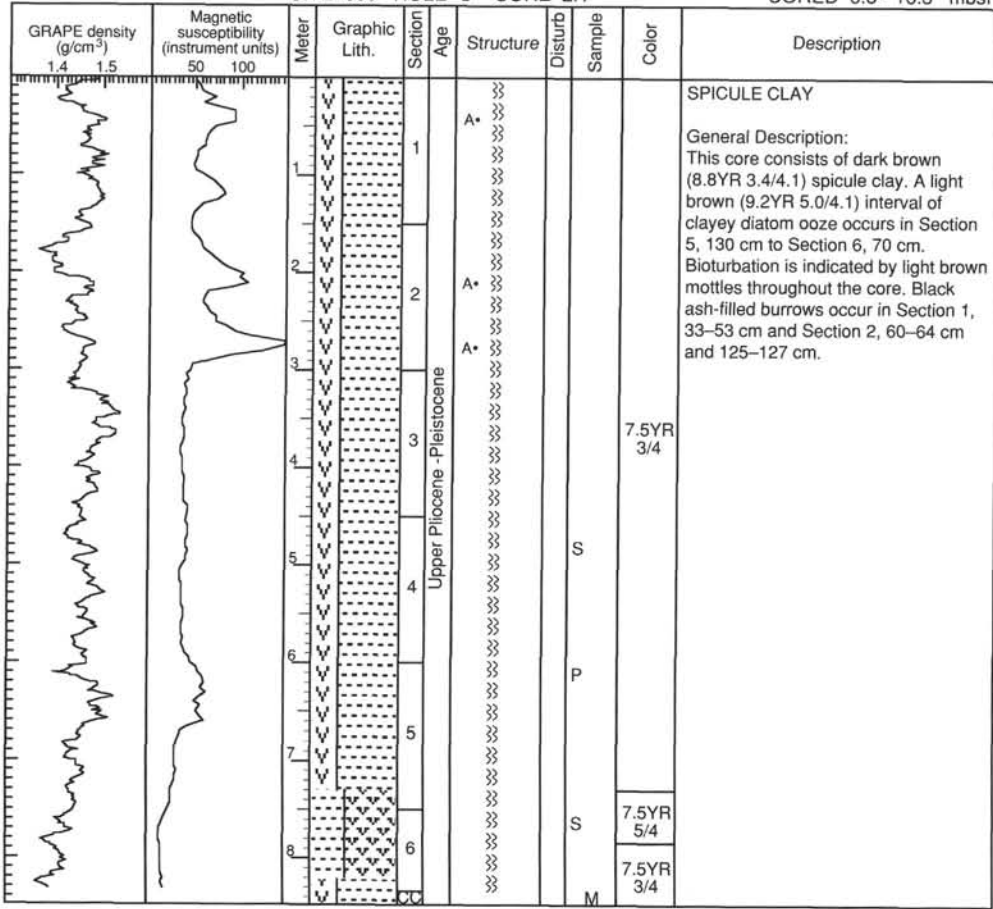


SITE 886 HOLE C CORE 1H CORED 0.0 - 6.8 mbsf



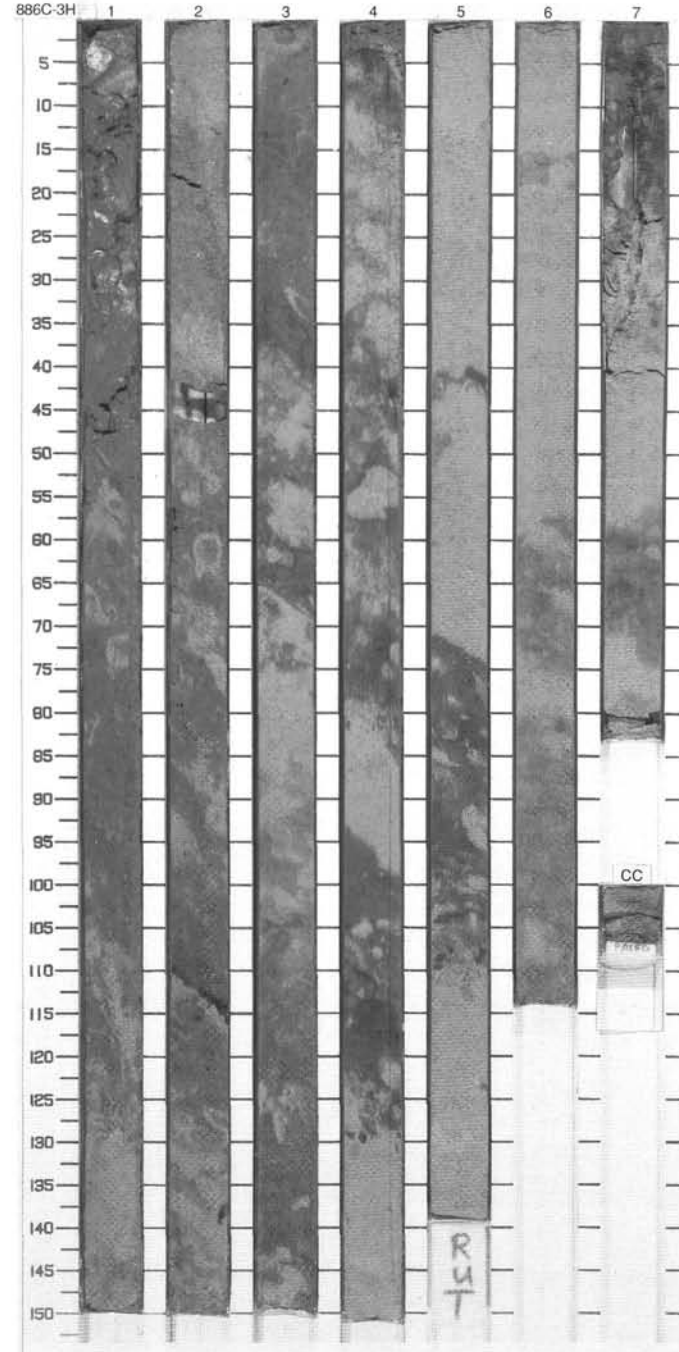
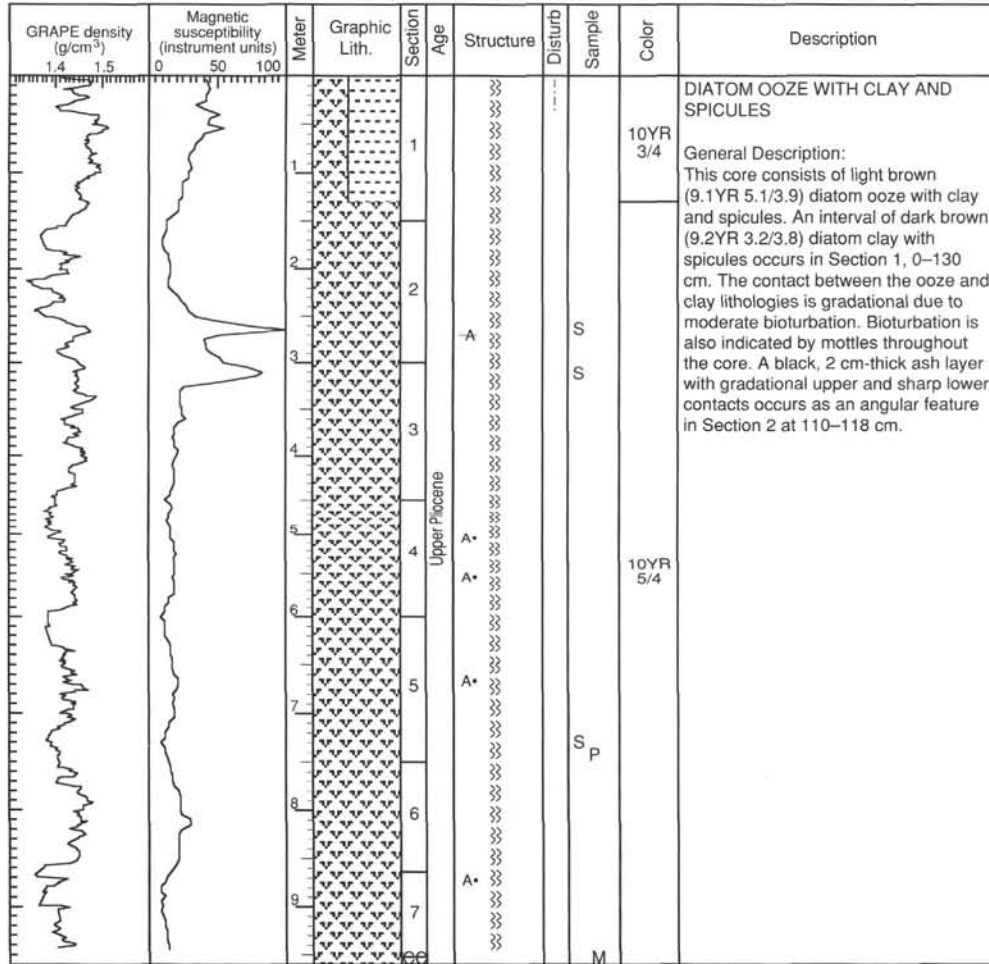
SITE 886 HOLE C CORE 2H

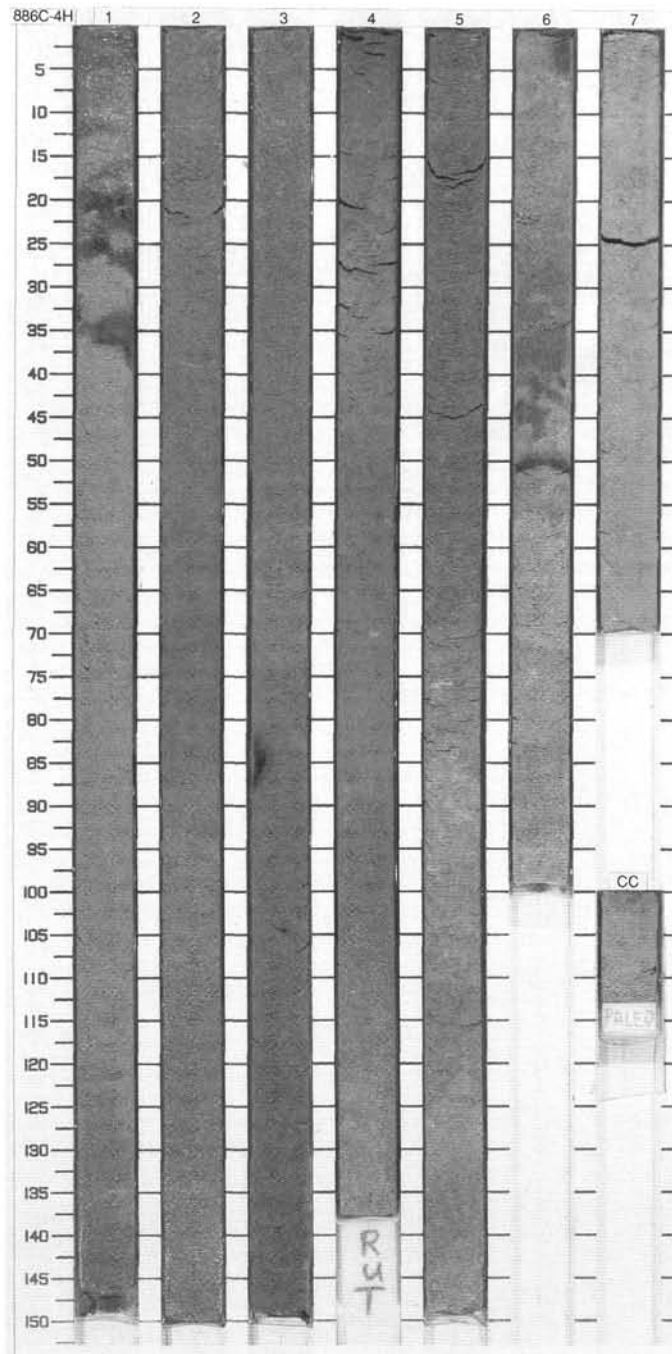
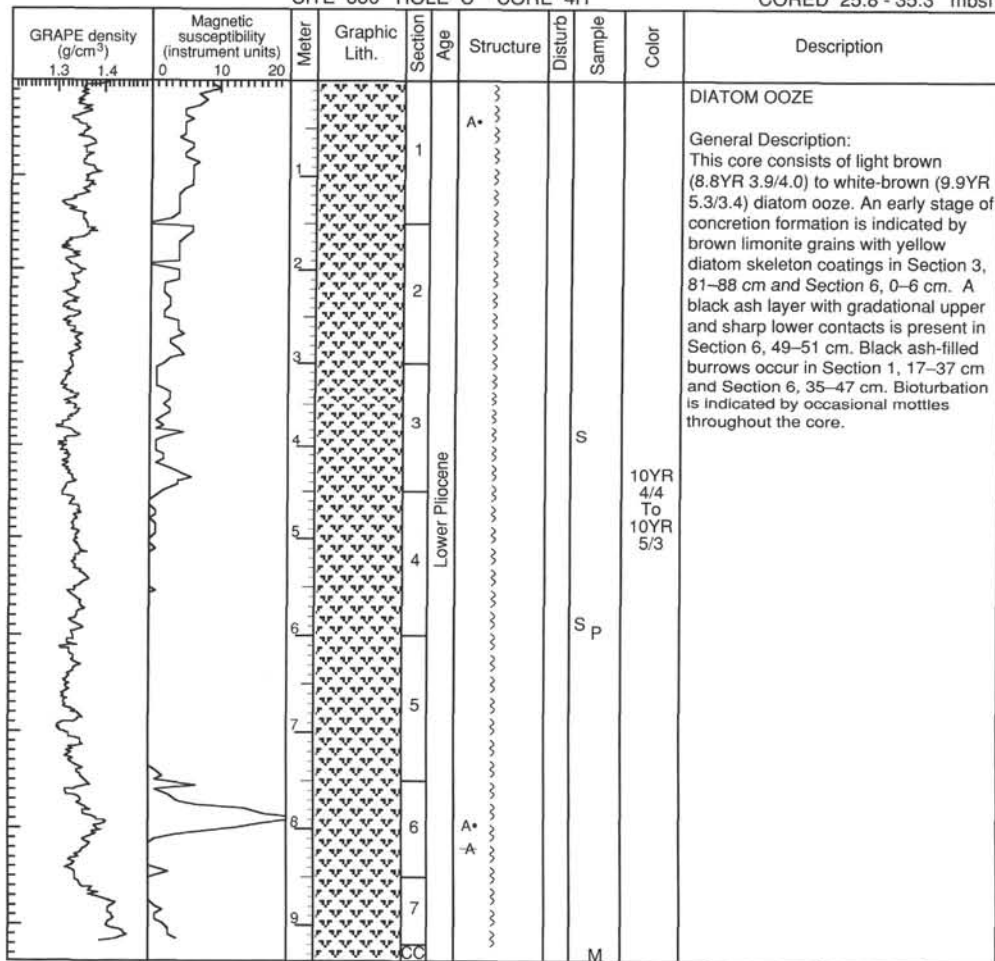
CORED 6.8 - 16.3 mbsf



SITE 886 HOLE C CORE 3H

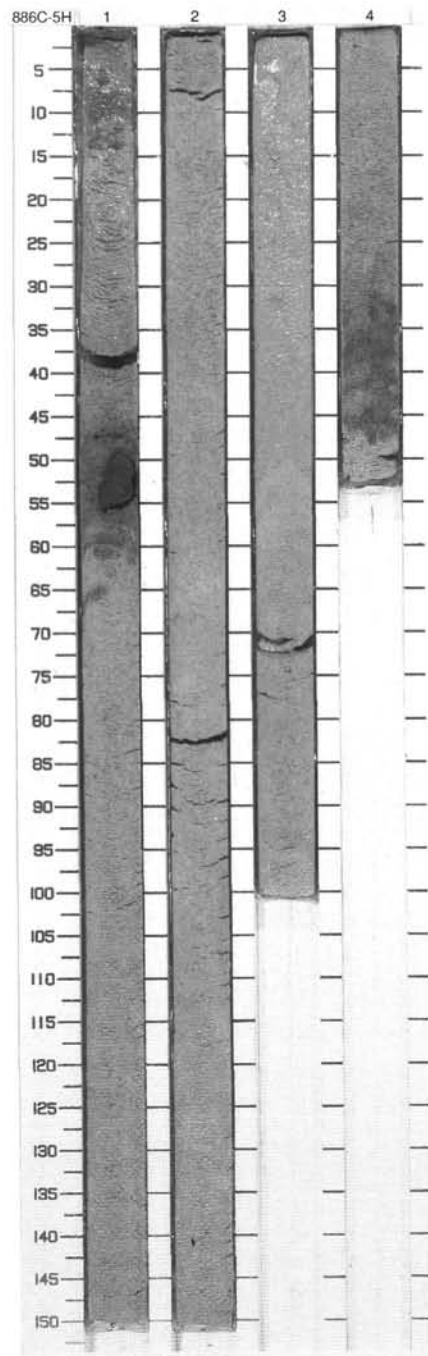
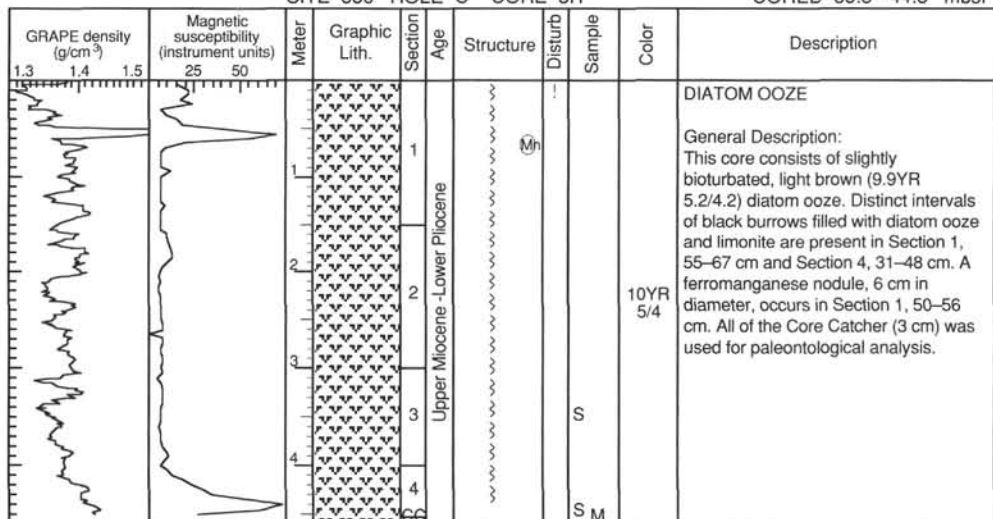
CORED 16.3 - 25.8 mbsf

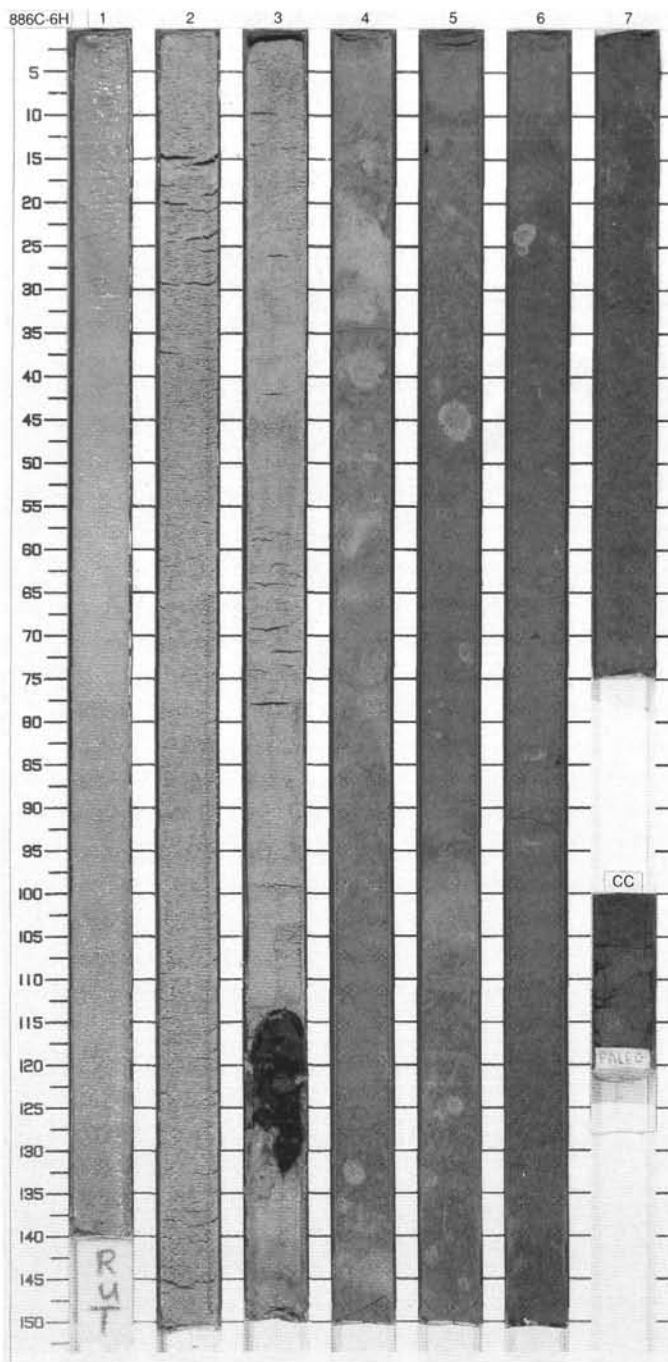
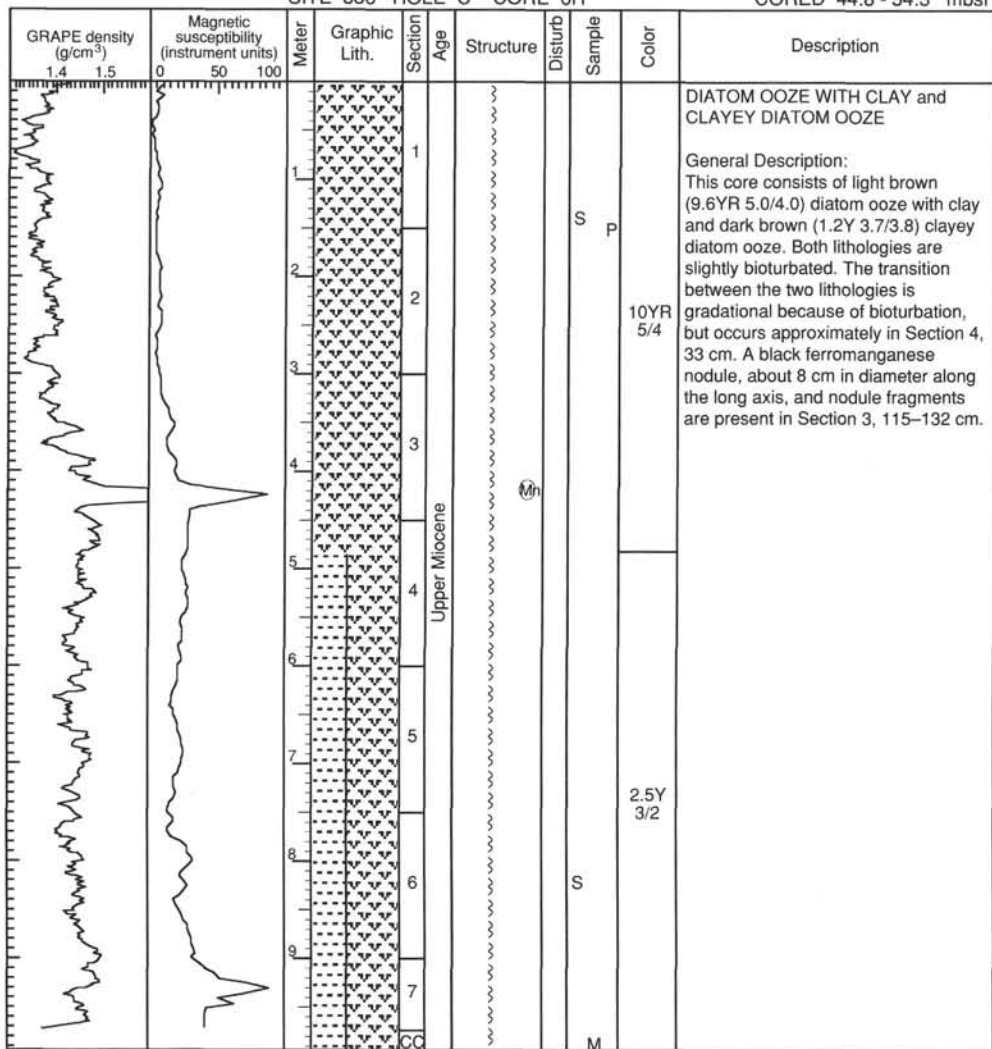




SITE 886 HOLE C CORE 5H

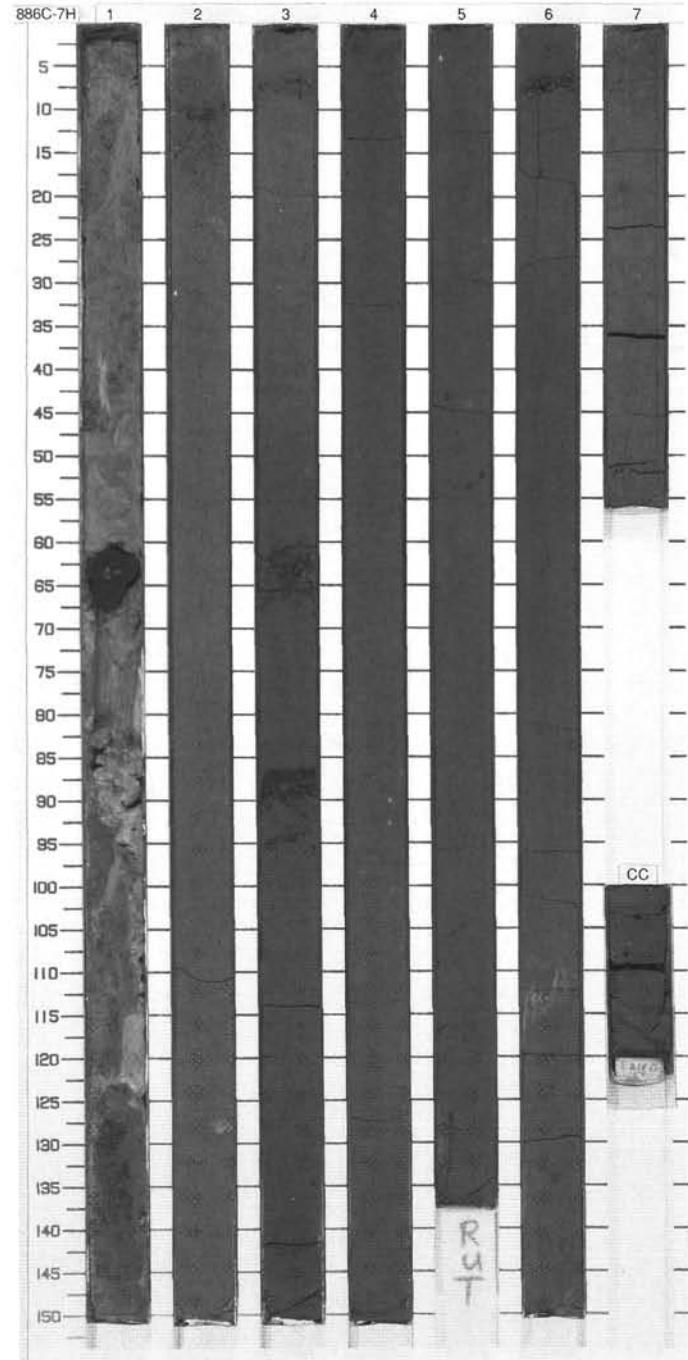
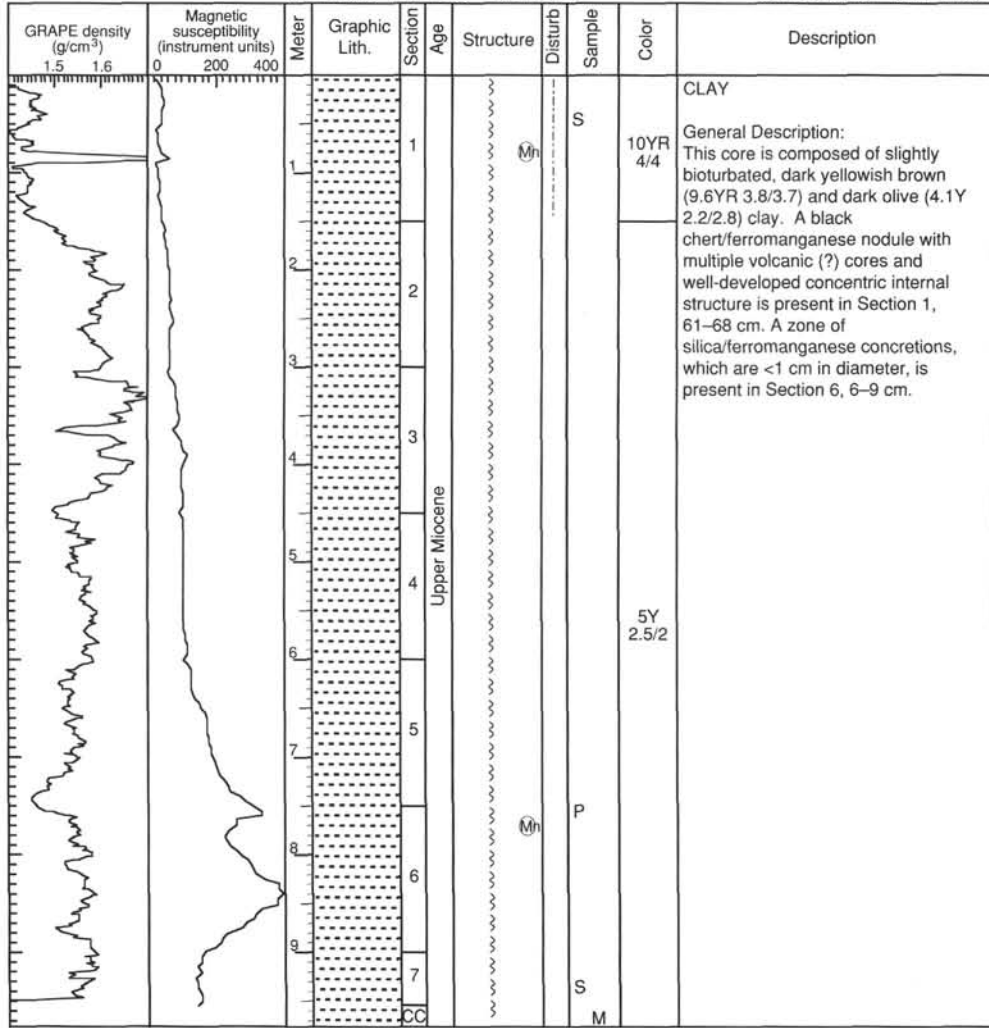
CORED 35.3 - 44.8 mbsf

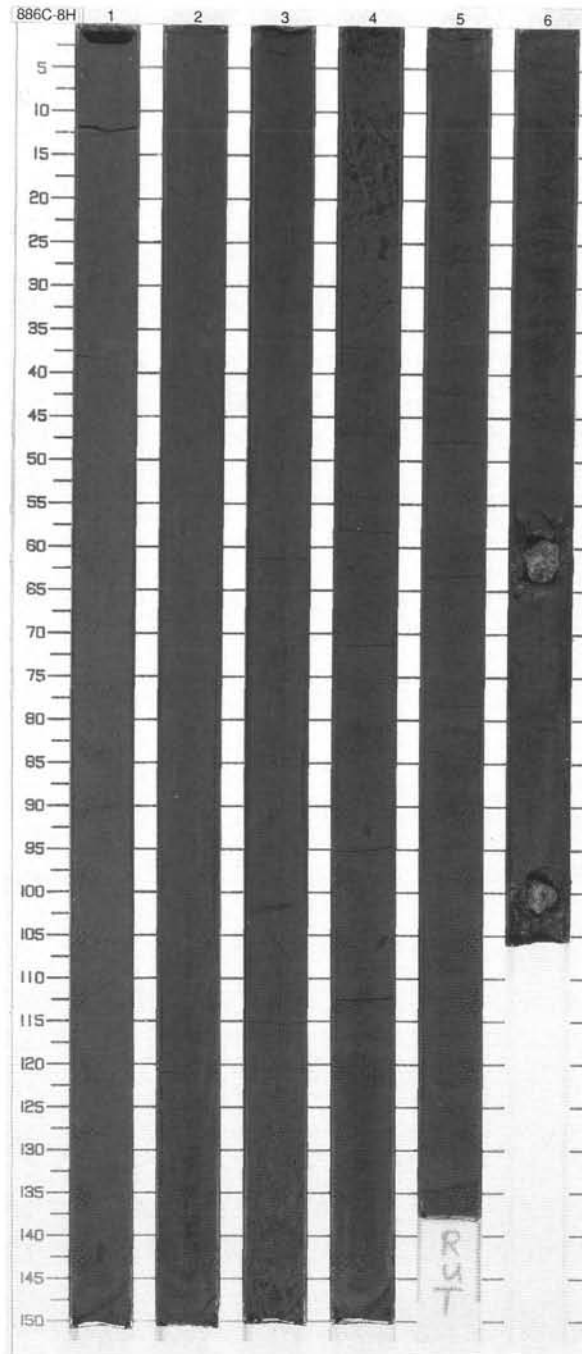
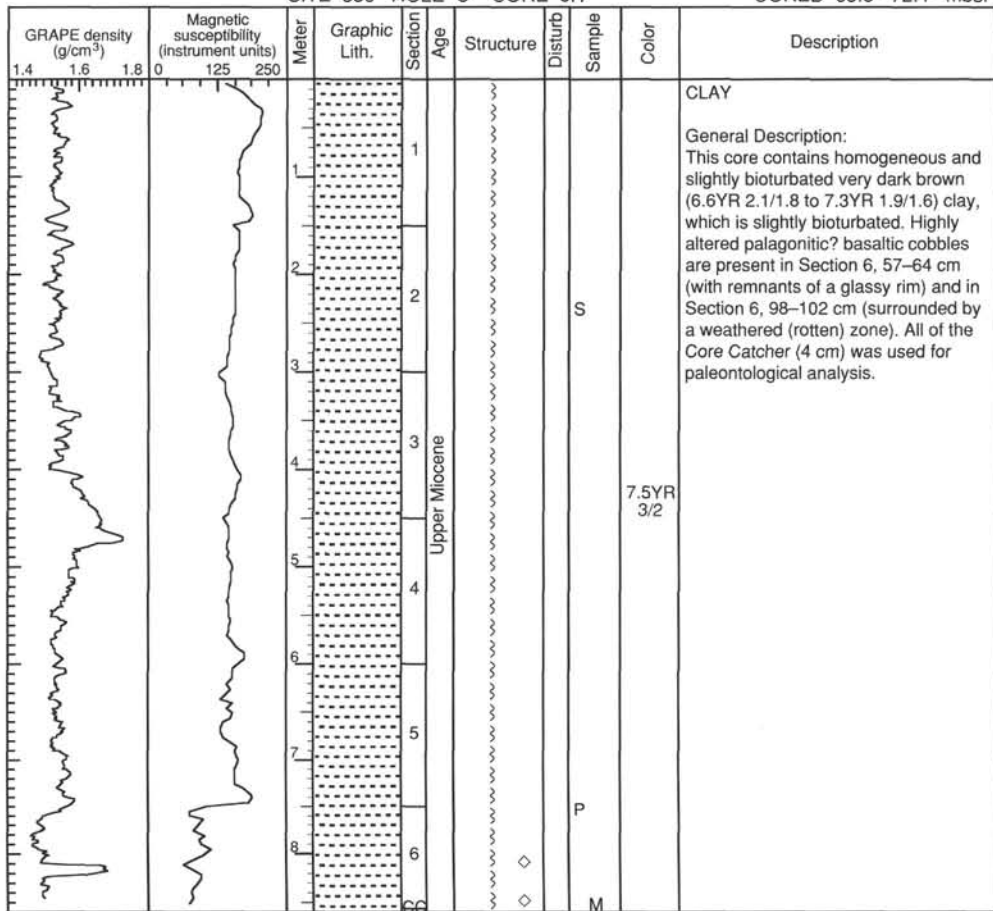




SITE 886 HOLE C CORE 7H

CORED 54.3 - 63.8 mbsf





145-885A-7H-1

UNIT 1: APHYRIC BASALT

Pieces 1-2

CONTACTS: Top: quenched; bottom: not seen, placed by top of next unit.

PHENOCRYSTS: Only a few seen, randomly distributed single crystals.

Plagioclase - <1%; 0.5-1.5 mm; subhedral, moderately to highly altered.

Olivine - <<1%; 0.5 mm; subhedral, highly to completely altered.

GROUNDMASS: Microcrystalline.

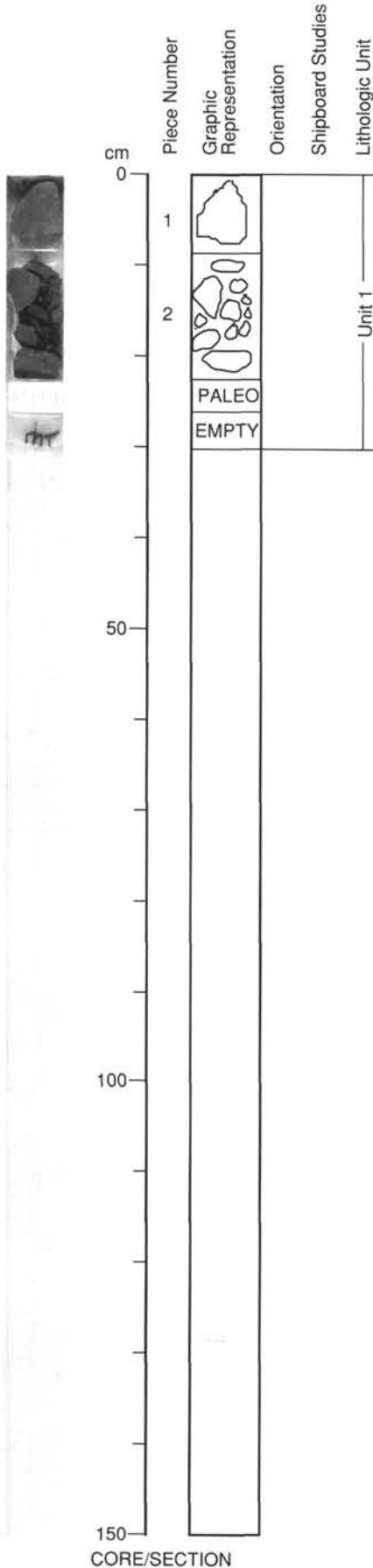
VESICLES: <<1%; <1.0 mm; round; random distribution; only a few seen, all are completely infilled with yellowish white clay.

COLOR: Burnt orange at top, to dark brownish gray.

STRUCTURE: Sheet or flow.

ALTERATION: Moderately to highly altered.

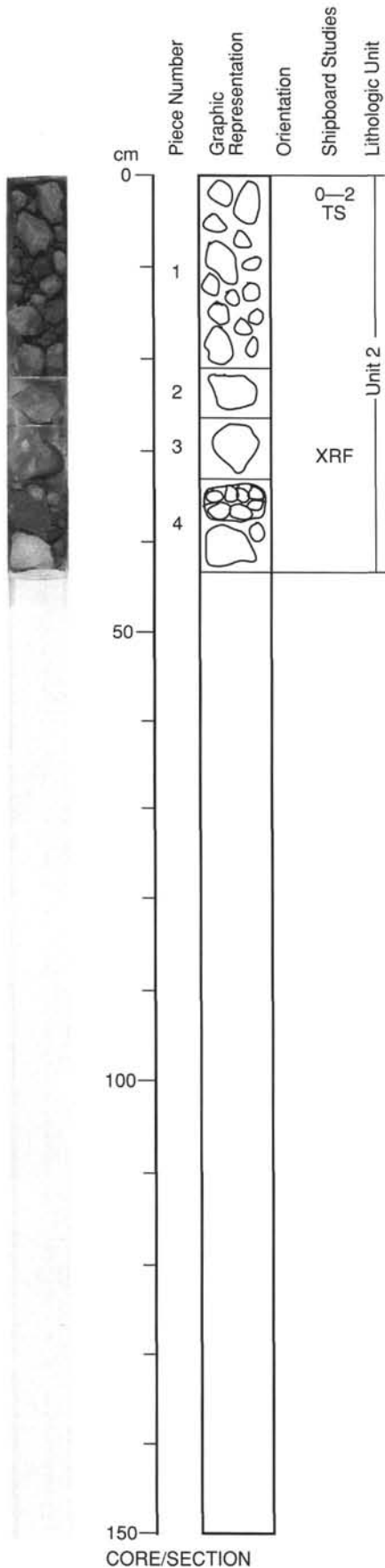
VEINS/FRACTURES: None seen.



145-885A-8X-1

UNIT 2: APHYRIC BASALT

Pieces 1-4



CONTACTS: Top: glassy cobble in Piece 1; bottom: not seen, end of hole.

PHENOCRYSTS: Only a few seen, randomly distributed single crystals, one plagioclase is 2 mm, one glomerocryst seen in Piece 3.

Plagioclase - <<1%; <1.5 mm; subhedral, moderately to highly altered.

Olivine - <<1%; <1.0 mm; subhedral, highly to completely altered.

GROUNDMASS: Microcrystalline.

VESICLES: None seen.

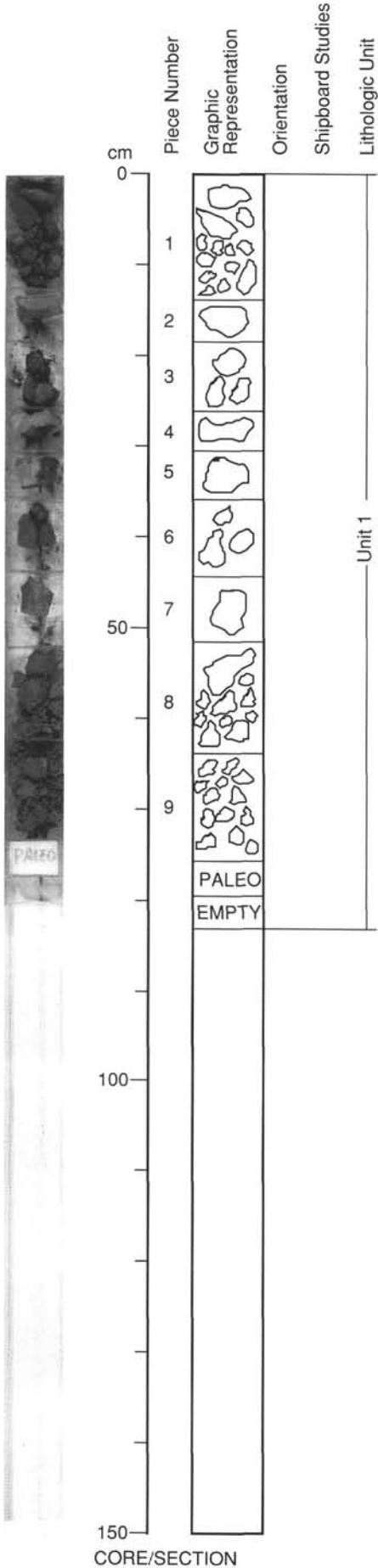
COLOR: Burnt orange glassy cobble in Piece 1, to dark brownish gray in Pieces 2 and 3, to dark gray in Piece 4.

STRUCTURE: Sheet or flow.

ALTERATION: Moderately to highly altered.

VEINS/FRACTURES: None seen.

ADDITIONAL COMMENTS: Piece 4 appears to be the least altered.



UNIT 1: APHYRIC BASALT

Pieces 1-9

CONTACTS: Top: not seen, top of basement; bottom: not seen, end of hole.

PHENOCRYSTS: Only a few seen, randomly distributed single crystals.

Plagioclase - <<1%; <2.0 mm; subhedral, highly to completely altered.

Olivine - <<1%; <1.5 mm; subhedral, very highly to completely altered.

GROUNDMASS: Microcrystalline.

VESICLES: None seen.

COLOR: Exterior of cobbles are variegated burnt orange-yellow-dark brown-dark gray, cut surfaces are dark brownish gray.

STRUCTURE: Unknown.

ALTERATION: Highly to very highly altered.

VEINS/FRACTURES: None seen.