

Figure 1. Multichannel seismic line GGU 81-08 of the 63°N transect showing the locations of Sites 914-918. Note the clear seaward-dipping reflectors and the steep shelf edge formed by a large wedge of glaciomarine sediments. Framed area below shows detail presented in Figure 2.

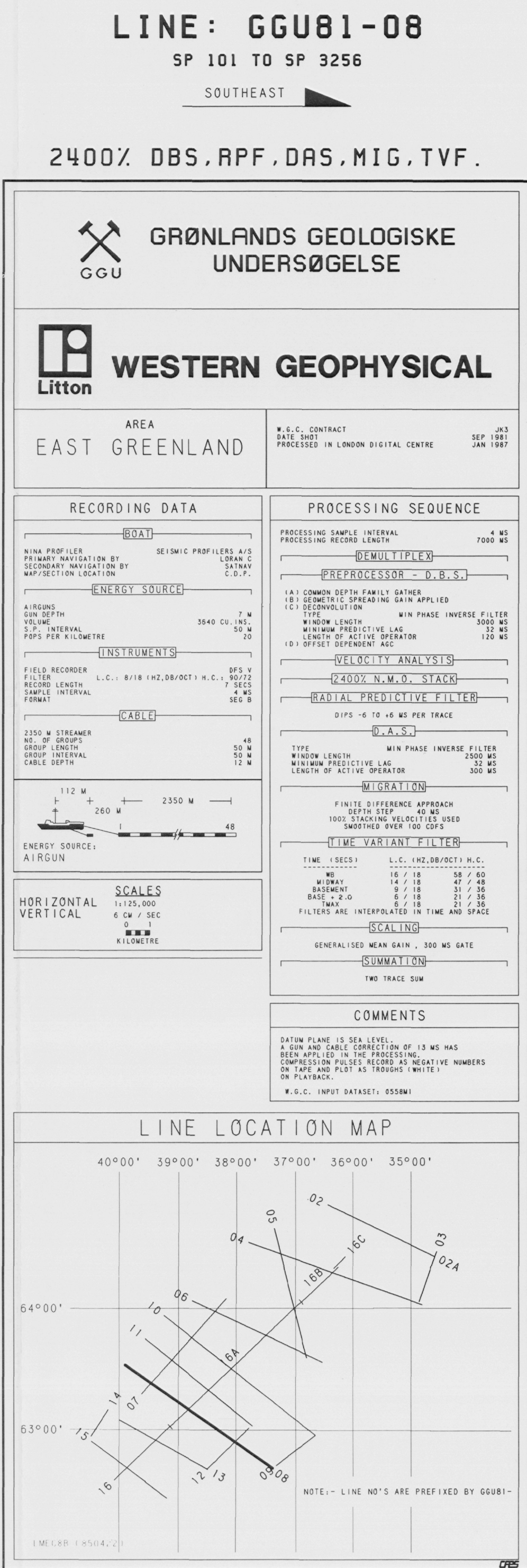
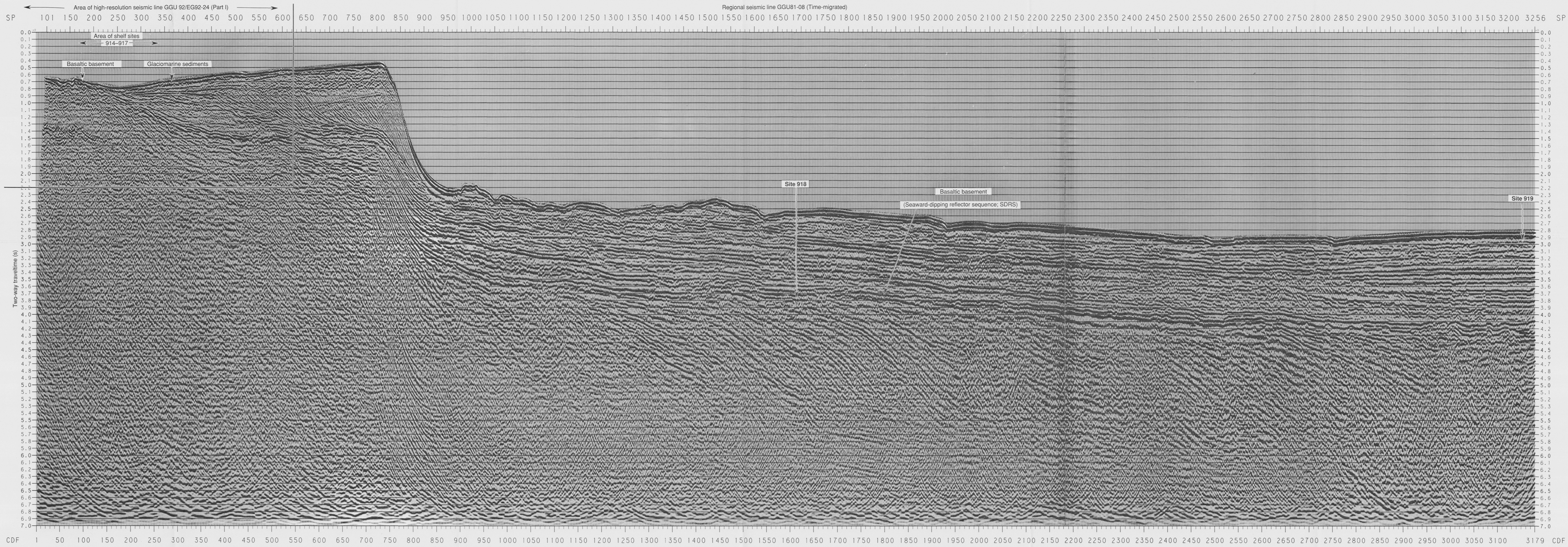


Figure 2. Multichannel seismic line GGU/EG 92-24 of the 63°N transect on the Greenland shelf. Note location of Site 914-917 in relation to the overlapping lavas and sediments, which thin landward. Strong secondary bottom reflections can be seen in the bottom half of the section.

