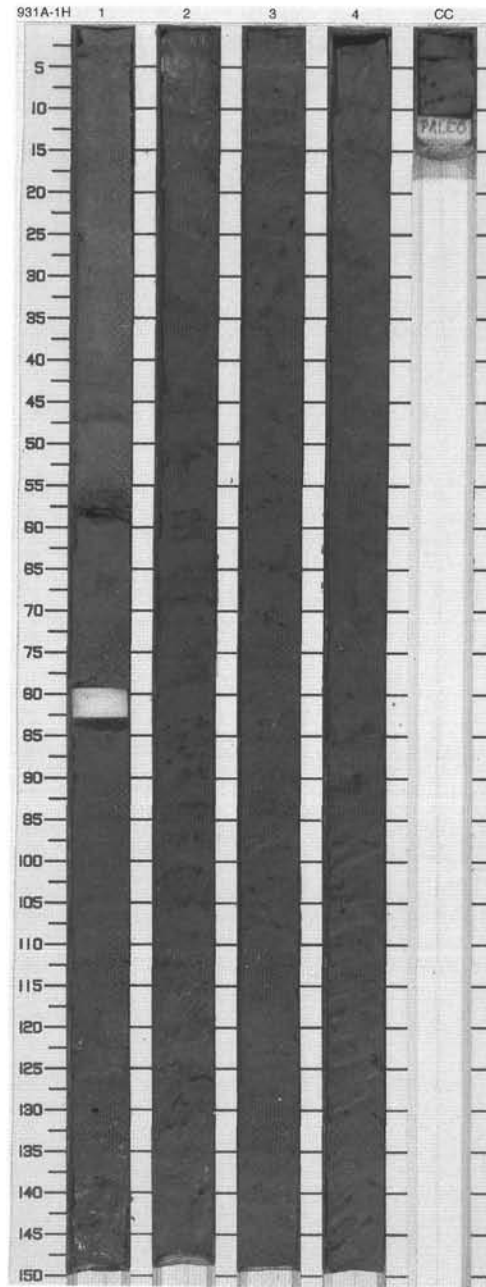


SITE 931 HOLE A CORE 1H

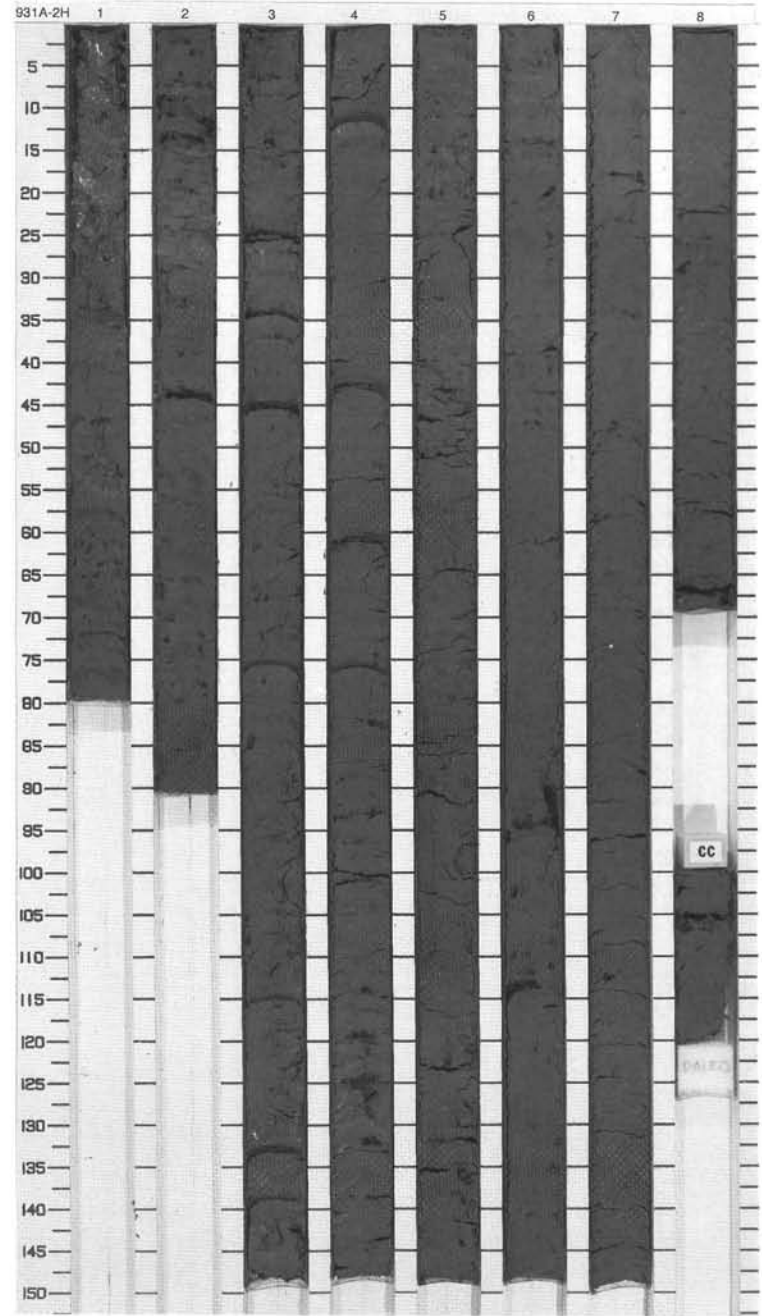
CORED 0.0 - 6.1 mbsf

Meter	Graphic Lith.	Section Age	Structure	Disturb	Sample	Color	Description
0.0 - 1.0	[Dotted pattern]	1 Holocene	}}			10YR 5/3	<p>CALCAREOUS CLAY and CLAY</p> <p>Major Lithology: The top 53 cm of this core consists of brown calcareous clay, the calcareous component including foraminifers and nannofossils. Below a dark reddish brown (5YR 4/3) indurated horizon between 56-59 cm, the sediments are composed of olive gray faintly color-banded and mottled clay.</p>
1.0 - 2.0	[Dotted pattern]	2	}}			5Y 4/2	
2.0 - 3.0	[Dotted pattern]	3 late Pleistocene	}}			5Y 4/2 To N1	<p>Minor Lithologies: Iron monosulfide is disseminated throughout the core.</p>
3.0 - 4.0	[Dotted pattern]		3	}}			
4.0 - 5.0	[Dotted pattern]		4	}}			
5.0 - 6.1	[Dotted pattern]		4	}}			
					M		



SITE 931 HOLE A CORE 2H CORED 6.1 - 15.6 mbsf

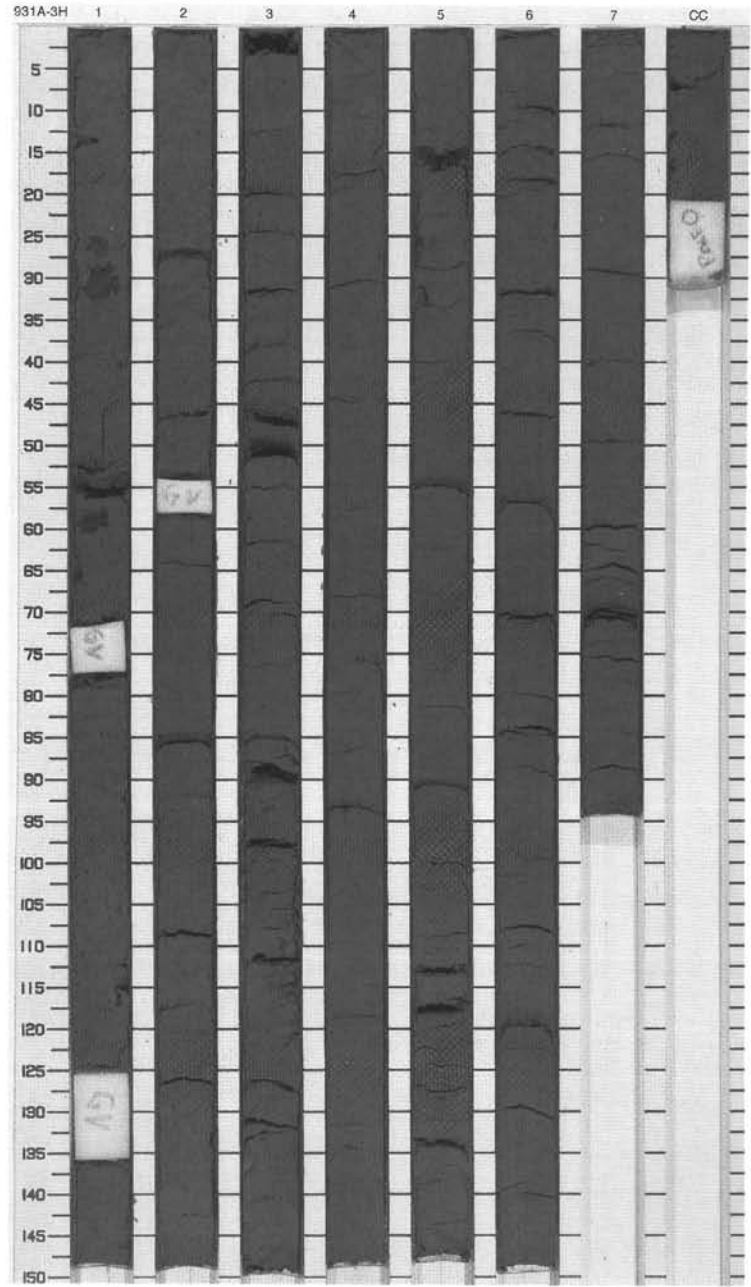
Meter	Graphic Lith.	Section Age	Structure	Disturb	Sample	Color	Description
1	[Dotted pattern]	1	[Symbol]	oo			CLAY Major Lithology: Olive gray faintly color-banded, mottled clay is the dominant lithology in this core.
2	[Dotted pattern]	2	[Symbol]				
3	[Dotted pattern]	3	[Symbol]				
4	[Dotted pattern]	4	[Symbol]				
5	[Dotted pattern]	5	[Symbol]				
6	[Dotted pattern]	6	[Symbol]				
7	[Dotted pattern]	7	[Symbol]				
8	[Dotted pattern]	8	[Symbol]				
	CC	late Pleistocene				5Y 4/2 To N1	
							M



SITE 931 HOLE A CORE 3H

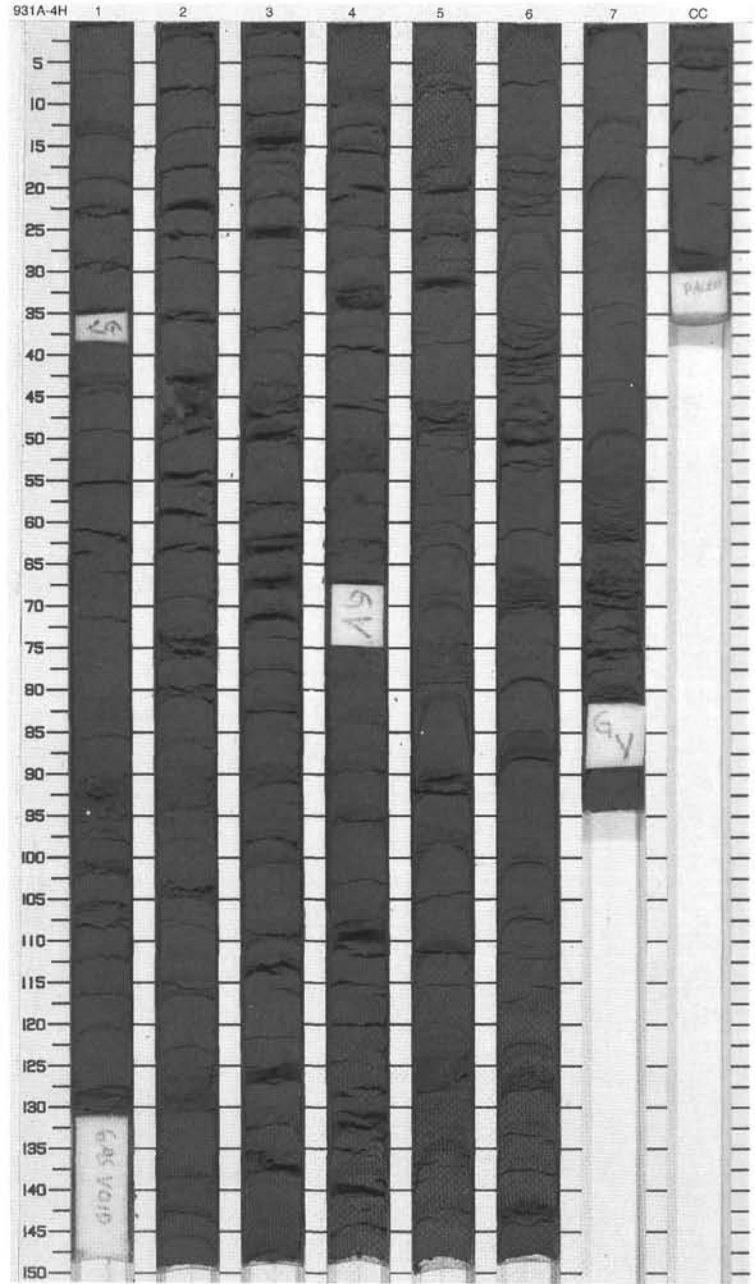
CORED 15.6 - 25.1 mbsf

Meter	Graphic Lith.	Section Age	Structure	Disturb	Sample	Color	Description
1	[Dotted pattern]	late Pleistocene	[Symbol: circle with dot]			5Y 4/2 To N1	CLAY Major Lithology: Olive gray clay with black (N1) mottling and color banding is the dominant lithology in this core.
2	[Dotted pattern]		[Symbol: three vertical bars]				
3	[Dotted pattern]		[Symbol: flower]				
4	[Dotted pattern]		[Symbol: three vertical bars]				
5	[Dotted pattern]		[Symbol: flower]				
6	[Dotted pattern]		[Symbol: three vertical bars]				
7	[Dotted pattern]		[Symbol: flower]				
8	[Dotted pattern]		[Symbol: three vertical bars]				
9	[Dotted pattern]		[Symbol: flower]				
10	[Dotted pattern]		[Symbol: three vertical bars]				
CC					M		



SITE 931 HOLE A CORE 4H CORED 25.1 - 34.6 mbsf

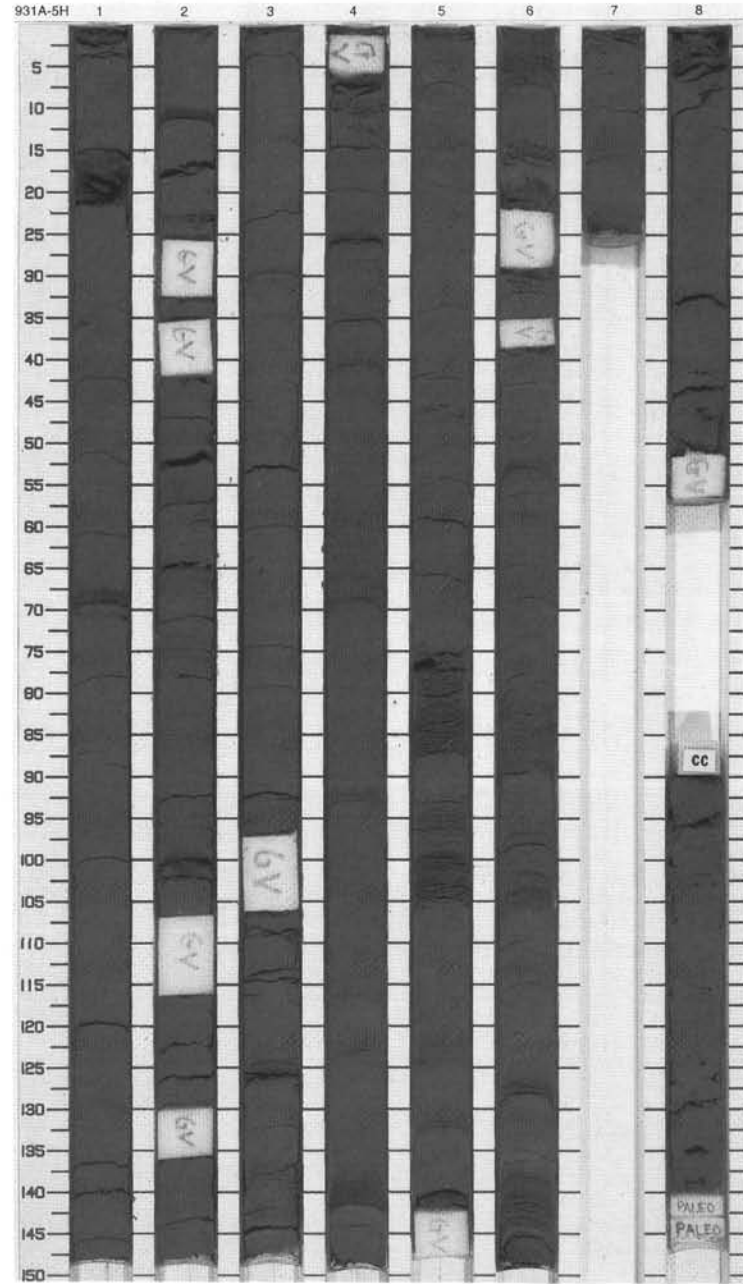
Meter	Graphic Lith.	Section	Age	Structure	Disturb	Sample	Color	Description
1	[Dotted pattern]	1		[Horizontal lines]				CLAY, SILT, AND SANDY SILT LAMINAE AND BEDS Major Lithology: Olive gray with faintly black color-banded (N1) clay is the dominant lithology throughout this core. Silt laminae and thin silt and fine sand beds are common in Sections 1, 3, 4, and 5.
2	[Dotted pattern]	2		[Horizontal lines]				
3	[Dotted pattern]	3		[Horizontal lines]				
4	[Dotted pattern]	4	late Pleistocene	[Horizontal lines]			5Y 4/2	
5	[Dotted pattern]	5		[Horizontal lines]				
6	[Dotted pattern]	6		[Horizontal lines]				
7	[Dotted pattern]	7		[Horizontal lines]				
8	[Dotted pattern]	CC						
9	[Dotted pattern]							
10	[Dotted pattern]							



SITE 931 HOLE A CORE 5H

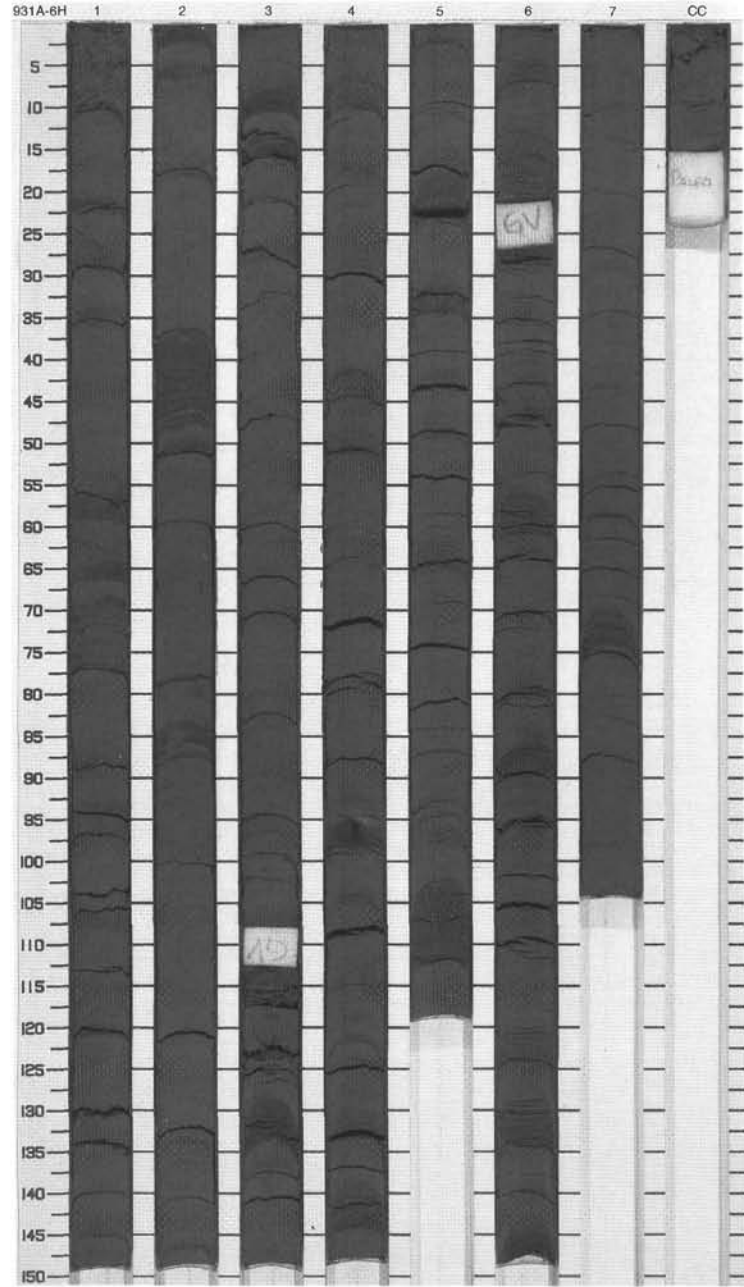
CORED 34.6 - 44.1 mbsf

Meter	Graphic Lith.	Section	Age	Structure	Disturb	Sample	Color	Description
1	[Dotted pattern]	1		[Symbol]				<p>CLAY, SILT, AND SANDY SILT LAMINAE AND BEDS</p> <p>Major Lithology: Dark olive gray faintly color-banded (N1) clay is the dominant lithology in this core. Silt laminae and thin silt and fine sand beds (up to a maximum of 8 cm thick) occur in Sections 4, 5, and 6.</p>
2	[Dotted pattern]	2		[Symbol]				
3	[Dotted pattern]	3		[Symbol]				
4	[Dotted pattern]	4		[Symbol]				
5	[Dotted pattern]	5		[Symbol]				
6	[Dotted pattern]	6		[Symbol]				
7	[Dotted pattern]	7		[Symbol]				
8	[Dotted pattern]	8		[Symbol]				
9	[Dotted pattern]	9		[Symbol]				
10	[Dotted pattern]	CC		[Symbol]				
			late Pleistocene				5Y 2.5/2	
								M




SITE 931 HOLE A CORE 6H CORED 44.1 - 53.6 mbsf

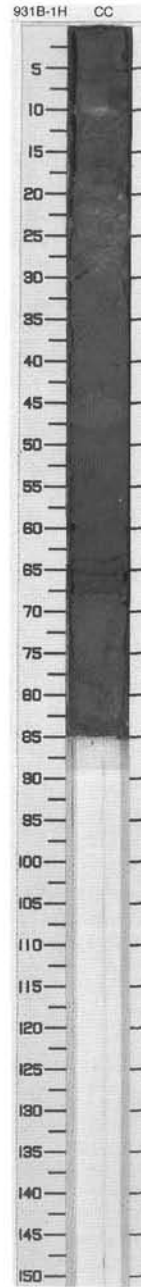
Meter	Graphic Lith.	Section	Age	Structure	Disturb	Sample	Color	Description
1	[Dotted pattern]	1		[Horizontal lines]				CLAY, SILT, AND SANDY SILT LAMINAE AND BEDS Major Lithology: Dark gray clay is the dominant lithology. Silt laminae and thin silt and fine sand beds (up to a maximum thickness of 10 cm) occur throughout this core. Many of the beds fine upward.
2	[Dotted pattern]	2		[Horizontal lines]				
3	[Dotted pattern]	3		[Horizontal lines]				
4	[Dotted pattern]	3		[Horizontal lines]				
5	[Dotted pattern]	4	late Pleistocene	[Horizontal lines]			5Y 3/1	
6	[Dotted pattern]	5		[Horizontal lines]				
7	[Dotted pattern]	6		[Horizontal lines]				
8	[Dotted pattern]	6		[Horizontal lines]				
9	[Dotted pattern]	7		[Horizontal lines]				
		CC						



SITE 931 HOLE B CORE 1H

CORED 0.0 - 0.8 mbsf

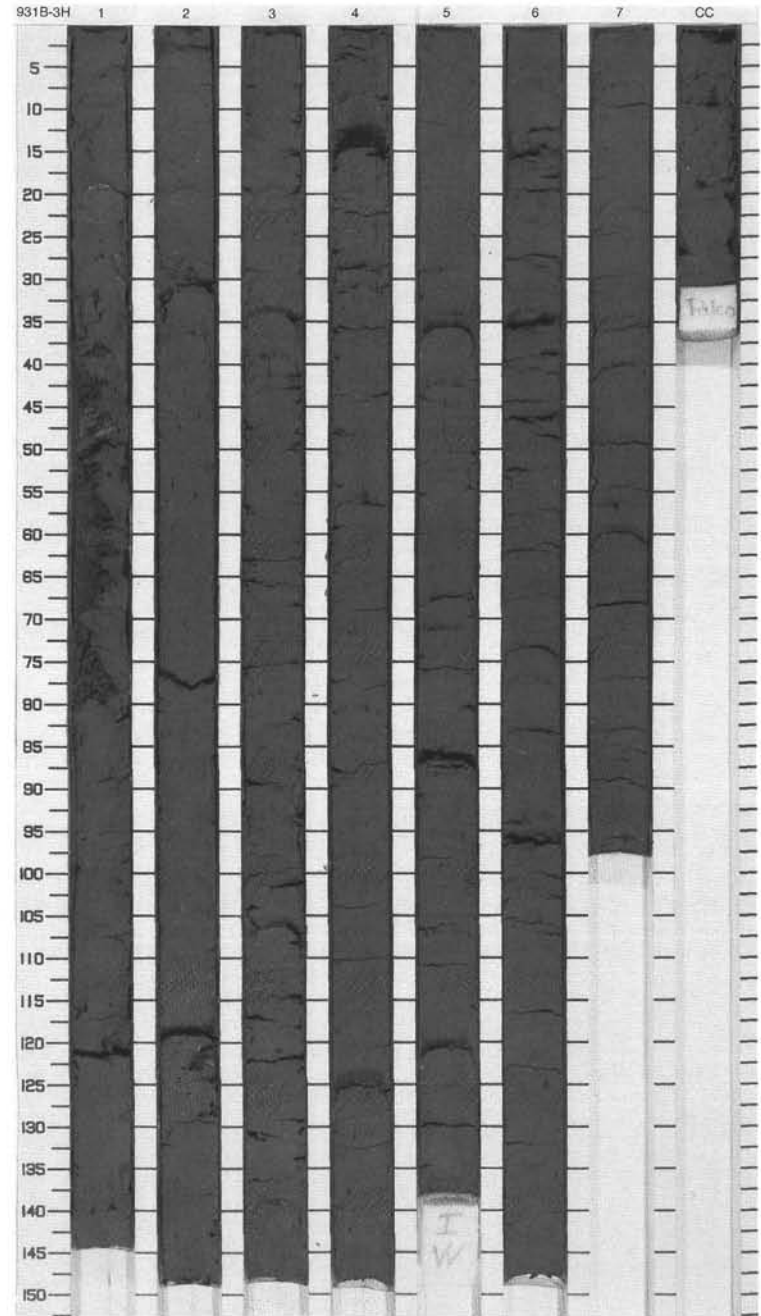
Meter	Graphic Lith.	Section	Age	Structure	Disturb	Sample	Color	Description
		CC			www	M		<p>General Description:</p> <p>NOTE: This core is incorrectly assembled in liner top>bottom and units within—however it does contain a Holocene section.</p>



SITE 931 HOLE B CORE 3H

CORED 10.3 - 19.8 mbsf

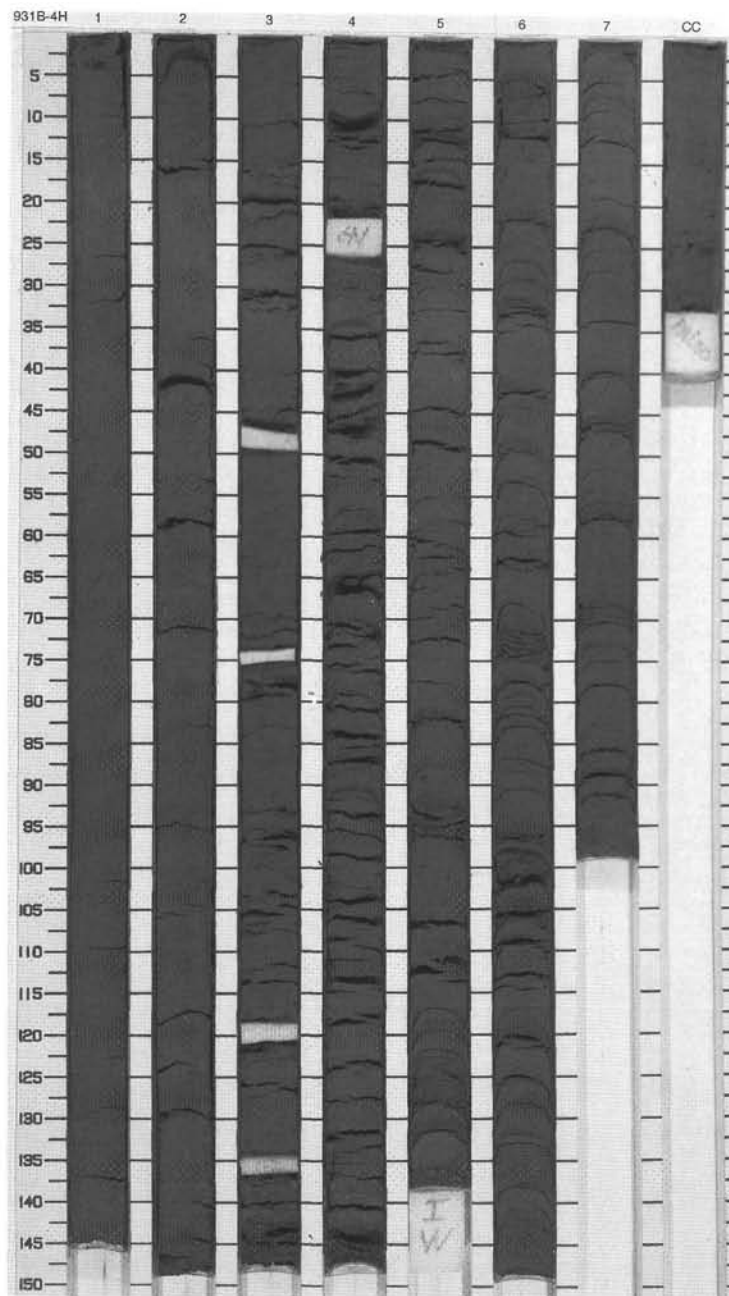
Meter	Graphic Lith.	Section	Age	Structure	Disturb	Sample	Color	Description
1	[Hatched pattern]	1		[Symbol]				<p>SILTY CLAY AND SILT LAMINAE</p> <p>Major Lithology: The entire core consists of very dark gray silty clay containing between two and four thin (1- to 20-mm-thick) silt laminae and/or beds per section. The clays are faintly black (N1) mottled or dark color banded.</p>
2	[Hatched pattern]	2		[Symbol]				
3	[Hatched pattern]	3		[Symbol]				
4	[Hatched pattern]	3		[Symbol]				
5	[Hatched pattern]	4	late Pleistocene	[Symbol]			5Y 3/2	
6	[Hatched pattern]	5		[Symbol]				
7	[Hatched pattern]	5		[Symbol]				
8	[Hatched pattern]	6		[Symbol]				
9	[Hatched pattern]	7		[Symbol]				
10	[Hatched pattern]	7		[Symbol]				
11	[Hatched pattern]	CC						



SITE 931 HOLE B CORE 4H

CORED 19.8 - 29.3 mbsf

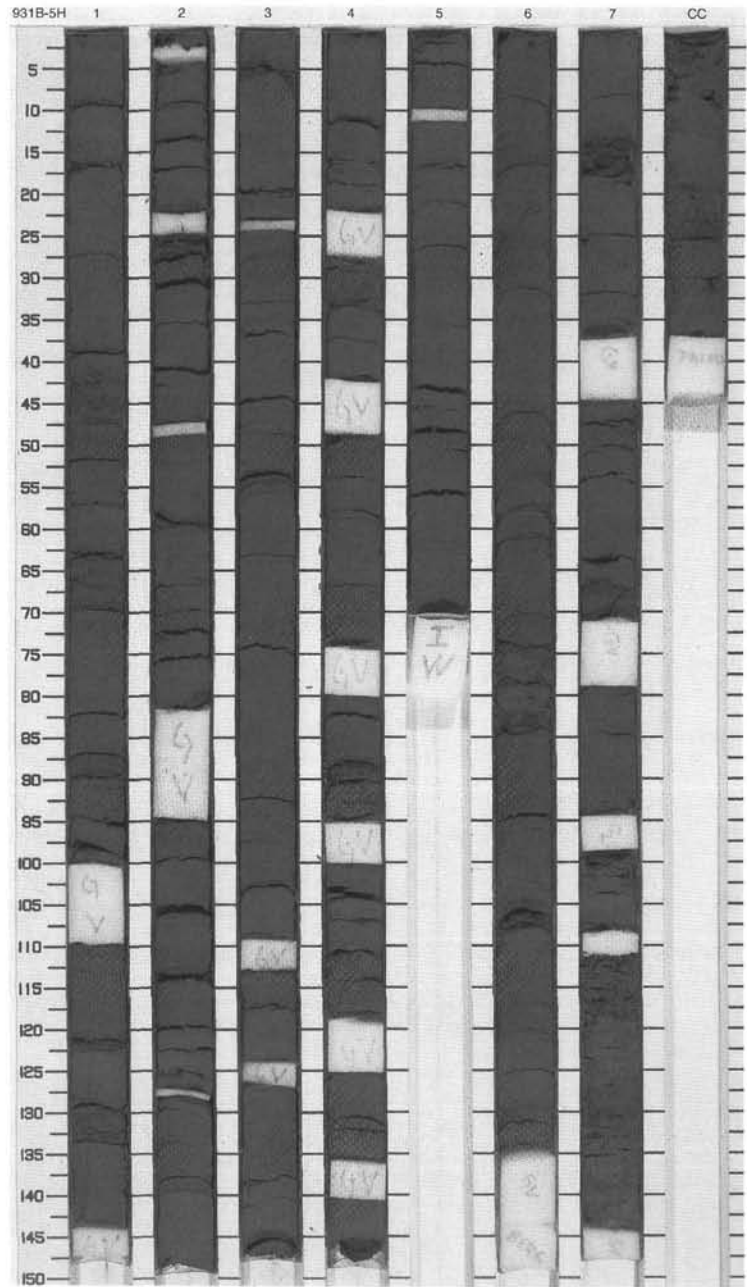
Meter	Graphic Lith.	Section	Age	Structure	Disturb	Sample	Color	Description
1		1		III				SILTY CLAY AND SILT LAMINAE Major Lithology: The sediment consists of dark olive gray silty clay with subtle black (N1) mottling and faint dark color banding. 1- to 5-mm-thick silt laminae are abundant through Sections 4 to 7.
2		2		III				
3		3		☼				
4		3		☼				
5		4	late Pleistocene	III			5Y 3/2	
6		4	late Pleistocene	☼				
7		5		III				
8		6		III				
9		6		☼				
10		7		☼				
		CC						
						M		



SITE 931 HOLE B CORE 5H

CORED 29.3 - 38.8 mbsf

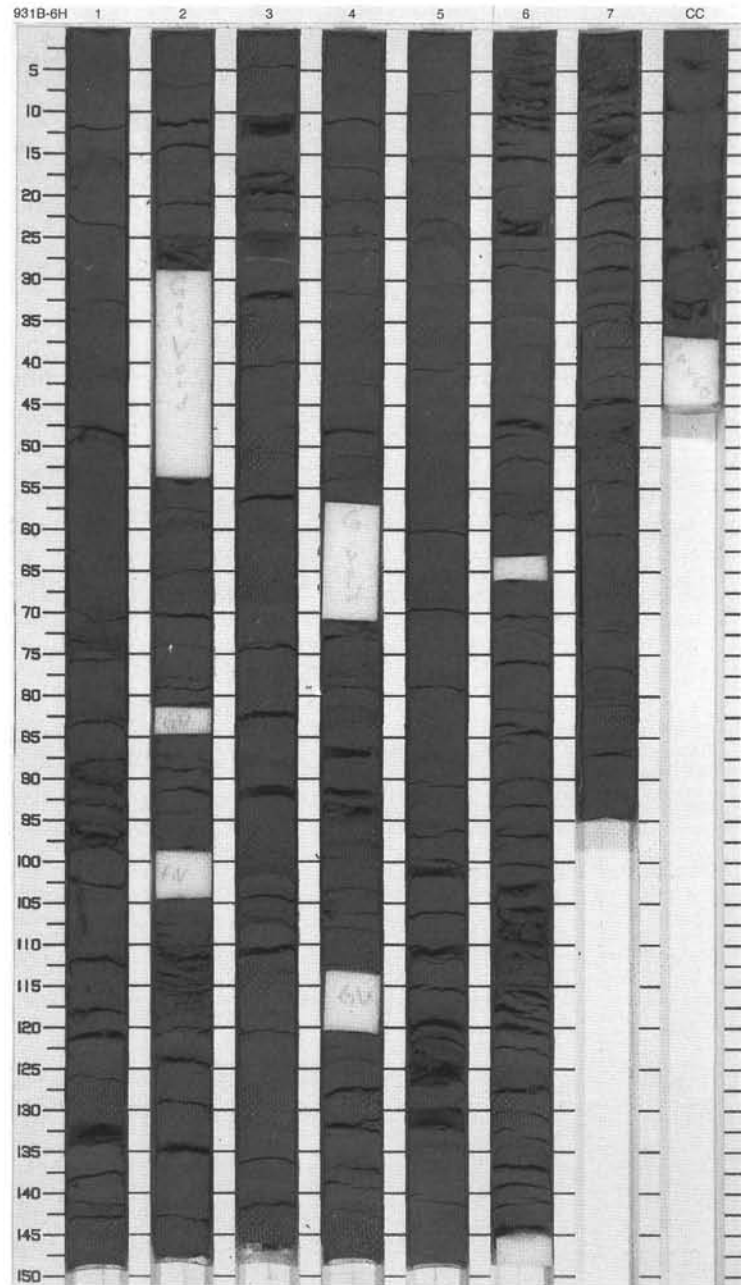
Meter	Graphic Lith.	Section	Age	Structure	Disturb	Sample	Color	Description
1	[Pattern]	1		[Symbol]				<p>SILTY CLAY, SILT LAMINAE, AND SILT AND FINE SAND BEDS</p> <p>Major Lithology: The dominant lithology is dark olive gray silty clay with minor black (N1) color banding or mottling. Numerous silt laminae and silt and fine sand beds are intercalated within this core.</p>
2	[Pattern]	2		[Symbol]				
3	[Pattern]	3		[Symbol]				
4	[Pattern]	3		[Symbol]				
5	[Pattern]	4	late Pleistocene	[Symbol]			5Y 3/2	
6	[Pattern]	5		[Symbol]				
7	[Pattern]	6		[Symbol]				
8	[Pattern]	7		[Symbol]				
9	[Pattern]	7		[Symbol]				
10	[Pattern]	CC		[Symbol]				



SITE 931 HOLE B CORE 6H

CORED 38.8 - 48.3 mbsf

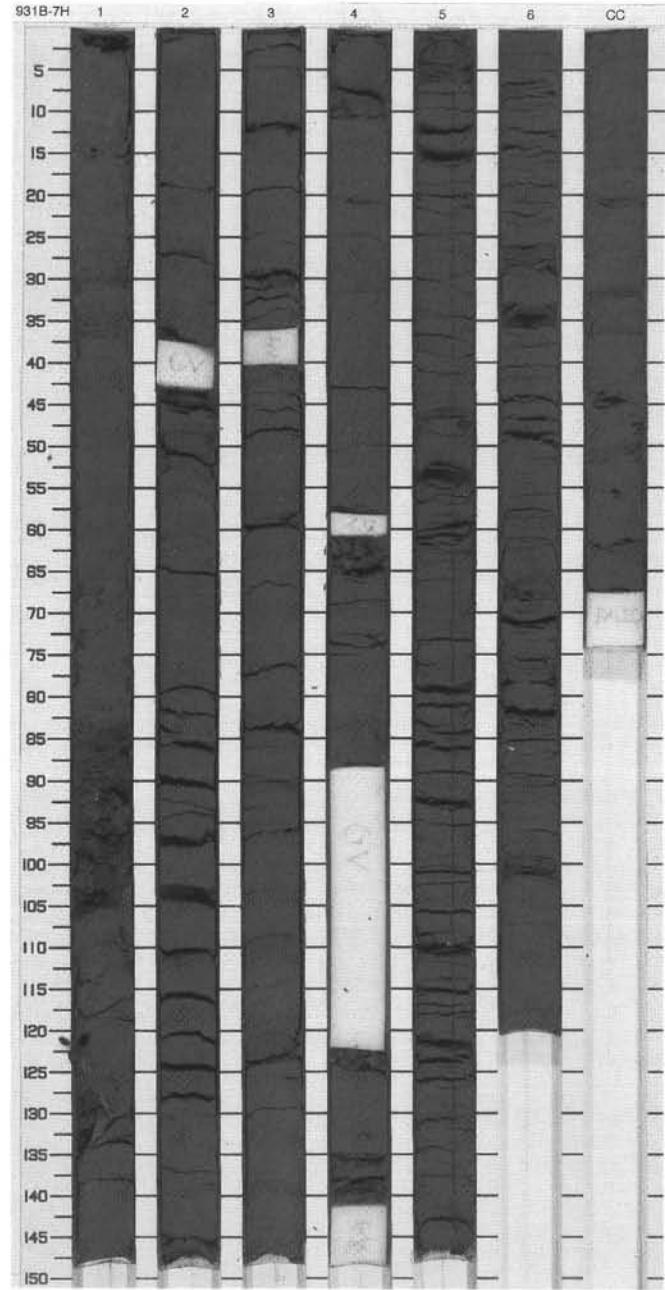
Meter	Graphic Lith.	Section	Age	Structure	Disturb	Sample	Color	Description
1	[Graphic Lithology]	1	late Pleistocene	[Structure]			5Y 3/2	<p>SILTY CLAY, SILT AND FINE SAND LAMINAE, and SILT AND FINE SAND BEDS</p> <p>Major Lithologies: The dominant lithology is faintly color-banded (black N1) mottled dark olive gray silty clay. Numerous silt and fine sand laminae and thin silt and fine sand beds occur in this core.</p>
2	[Graphic Lithology]	2		[Structure]				
3	[Graphic Lithology]	3		[Structure]				
4	[Graphic Lithology]	4		[Structure]				
5	[Graphic Lithology]	5		[Structure]				
6	[Graphic Lithology]	6		[Structure]				
7	[Graphic Lithology]	7		[Structure]				
8	[Graphic Lithology]	8		[Structure]				
9	[Graphic Lithology]	9		[Structure]				
10	[Graphic Lithology]	10		[Structure]				
		CC						
						M		



SITE 931 HOLE B CORE 7H

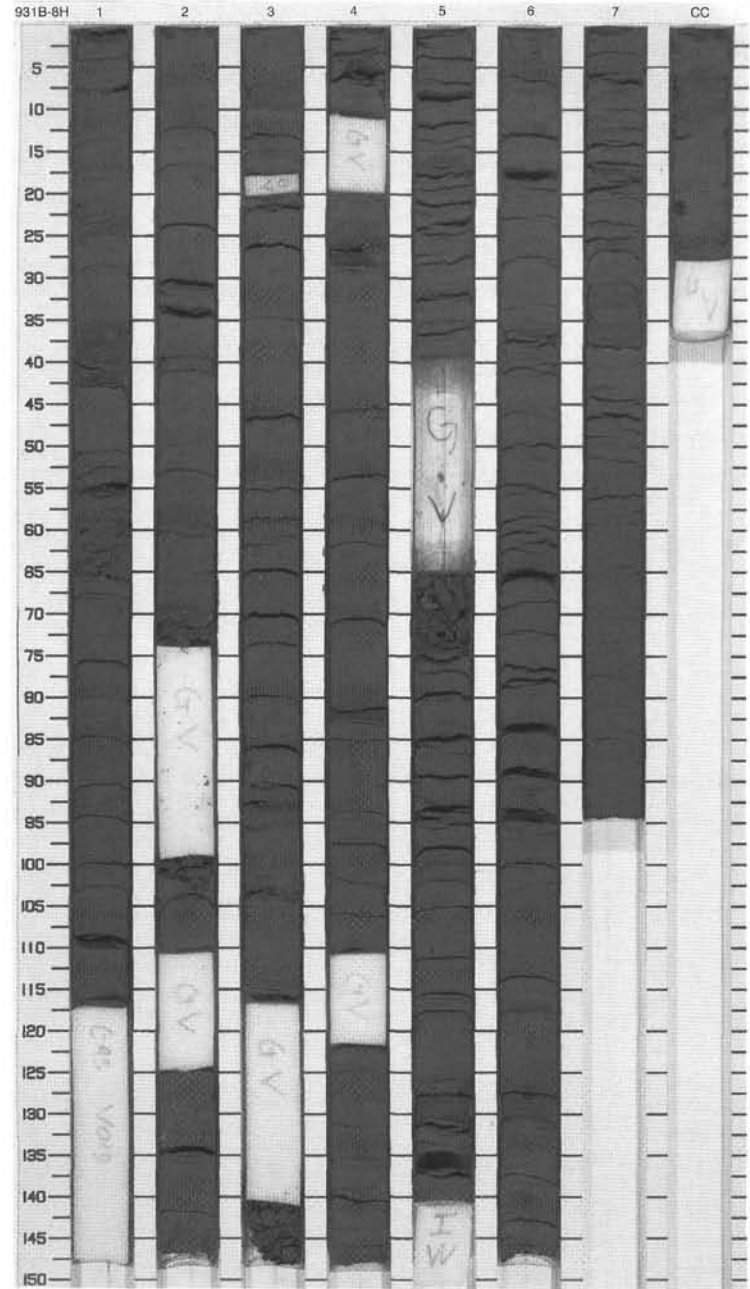
CORED 48.3 - 57.8 mbsf

Meter	Graphic Lith.	Section	Age	Structure	Disturb	Sample	Color	Description
1	[Hatched pattern]	1	late Pleistocene	[Three horizontal lines]	W		5Y 3/2	<p>SILTY CLAY AND SILT LAMINAE</p> <p>Major Lithology: Dark olive gray, faintly black (N1) color-banded, silty clay is the dominant lithology in this core. Silt laminae are scattered throughout the core.</p> <p>Minor Lithologies: Thin (1 to 3 cm) silt and silty mud beds occur in Sections 1, 2, 3, and 6. Some beds contain laminations.</p>
2	[Hatched pattern]	2		[Three horizontal lines]	W			
3	[Hatched pattern]	3		[Three horizontal lines]	W			
4	[Hatched pattern]	3		[Three horizontal lines]	W			
5	[Hatched pattern]	4		[Three horizontal lines]	W			
6	[Hatched pattern]	4		[Three horizontal lines]	W			
7	[Hatched pattern]	5		[Three horizontal lines]	W			
8	[Hatched pattern]	6		[Three horizontal lines]	W			
9	[Hatched pattern]	CC		[Three horizontal lines]	W			
					M			



SITE 931 HOLE B CORE 8H CORED 57.8 - 67.3 mbsf

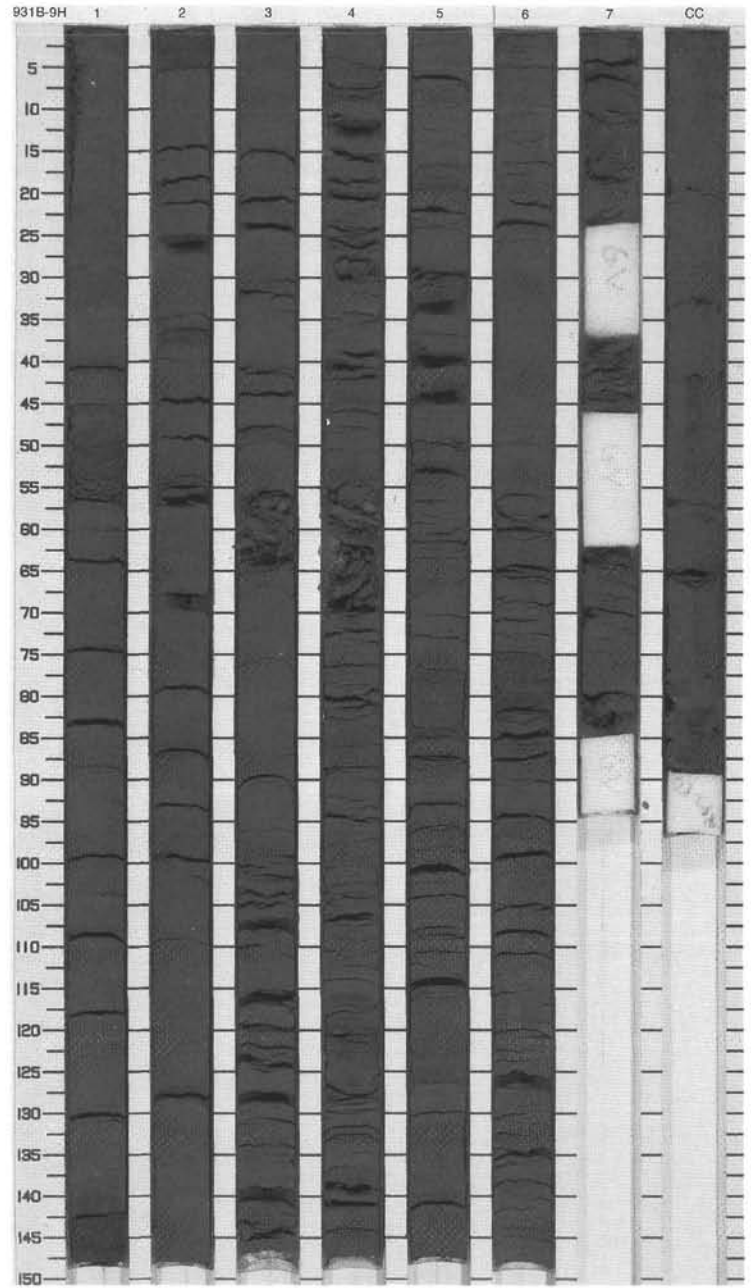
Meter	Graphic Lith.	Section	Age	Structure	Disturb	Sample	Color	Description
1	[Hatched pattern]	1	late Pleistocene	[Vertical lines]	[Vertical lines]		5Y 3/2	SILTY CLAY AND SILTY MUD BEDS Major Lithology: Dark olive gray, faintly black (N1) color-banded silty clay is the dominant lithology in this core. Silt and silty mud laminae/couplets occur throughout this core.
	Void							
2	[Hatched pattern]	2						
	Void							
3	[Hatched pattern]	3						
	Void							
4	[Hatched pattern]	4						
	Void							
5	[Hatched pattern]	5						
	Void							
6	[Hatched pattern]	6						
	Void							
7	[Hatched pattern]	7						
	Void							
8	[Hatched pattern]	8						
	Void							
9	[Hatched pattern]	9						
	Void							
10	[Hatched pattern]	10						
	Void							
	CC							



SITE 931 HOLE B CORE 9H

CORED 67.3 - 76.8 mbsf

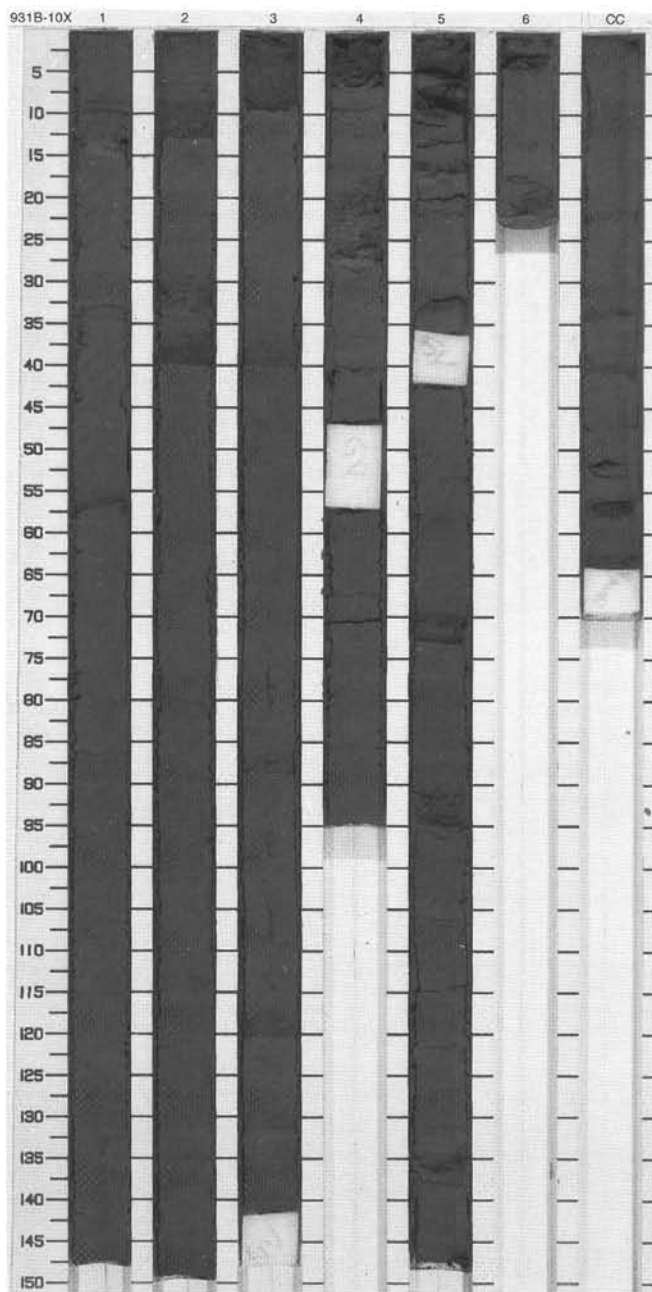
Meter	Graphic Lith.	Section Age	Structure	Disturb	Sample	Color	Description
1	[Hatched pattern]	1					<p>SILTY CLAY, SANDY SILT LAMINAE AND BEDS</p> <p>Major Lithology: Dark olive gray, faintly black (N1) color-banded silty clay is the dominant lithology in this core. Numerous sandy silt laminae/couplets and beds occur in the core.</p>
2	[Hatched pattern]	2					
3	[Hatched pattern]	3					
4	[Hatched pattern]	4					
5	[Hatched pattern]	4	late Pleistocene				
6	[Hatched pattern]	5					
7	[Hatched pattern]	6					
8	[Hatched pattern]	7					
9	[Hatched pattern]	7					
10	[Hatched pattern]	CC					
					M	5Y 3/2	



SITE 931 HOLE B CORE 10X

CORED 76.8 - 84.3 mbsf

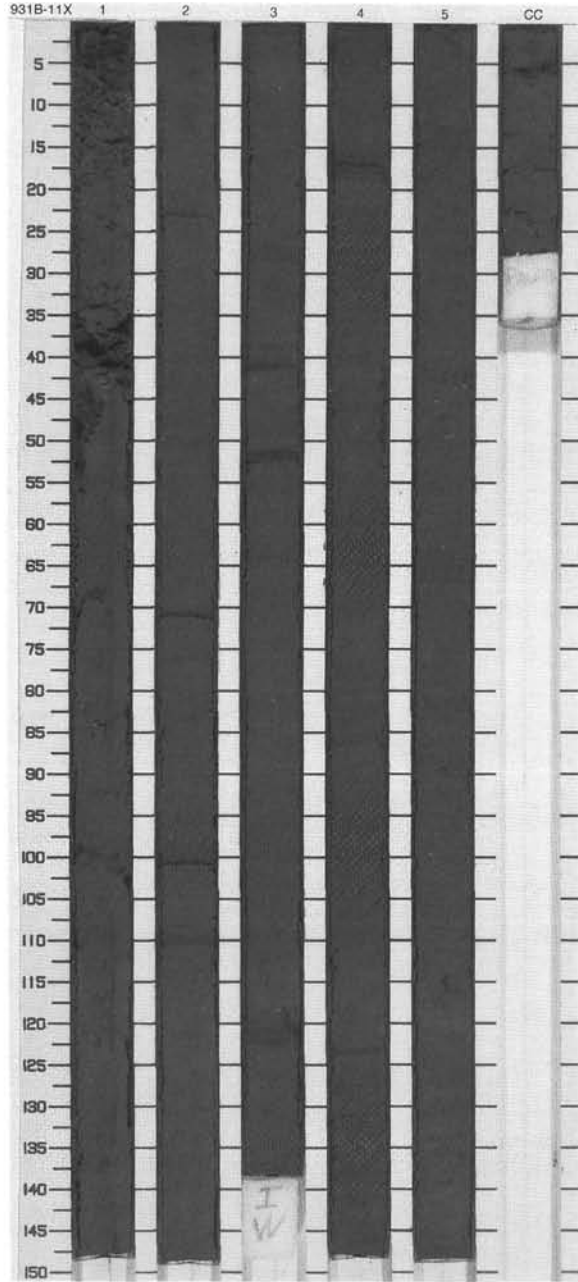
Meter	Graphic Lith.	Section	Age	Structure	Disturb	Sample	Color	Description
1	[Symbol]	1	late Pleistocene	[Symbol]	W		5Y 3/2	SILTY CLAY, SILT LAMINAE AND BEDS Major Lithology: Dark olive gray, black (N1) color-banded silty clay is the dominant lithology in this core. Coarse silt beds and laminae are disseminated throughout the core.
2	[Symbol]	2						
3	[Symbol]	3						
4	[Symbol]	4						
5	[Symbol]	5						
6	[Symbol]	6						
7	[Symbol]	CC						
						M		



SITE 931 HOLE B CORE 11X

CORED 84.3 - 93.9 mbsf

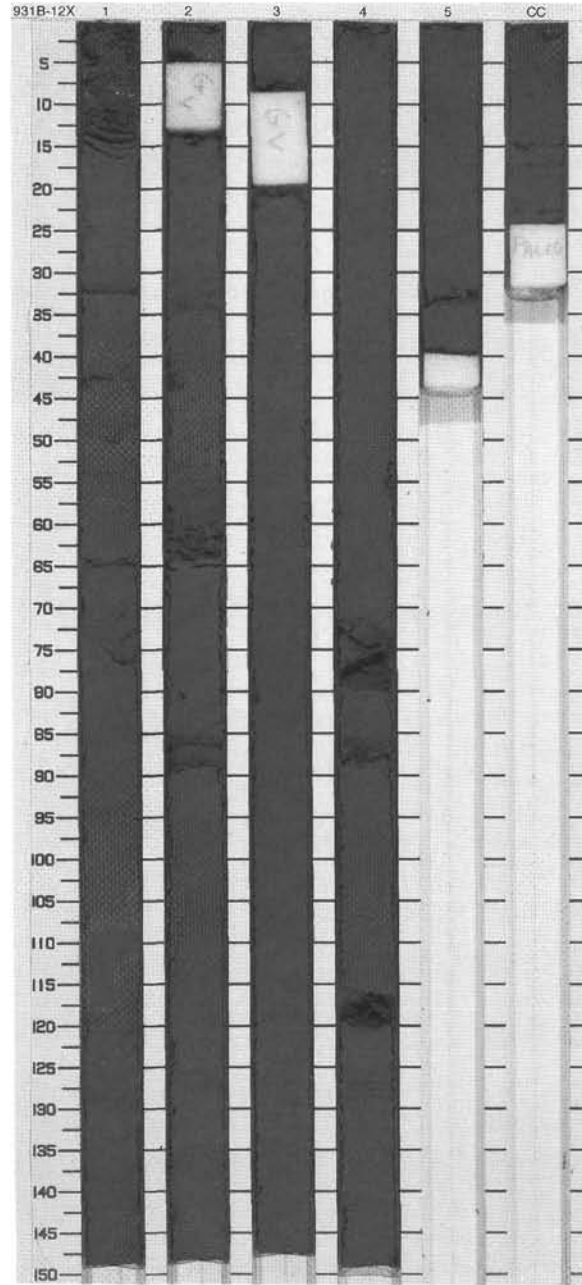
Meter	Graphic Lith.	Section	Age	Structure	Disturb	Sample	Color	Description
1	[Hatched pattern]	1	late Pleistocene	[Symbol]	[Symbol]		5Y 3/2	SILTY CLAY AND CLAY Major Lithology: Sections 1-3 consist of dark olive gray, faintly mottled and black (N-1) color-banded silty clay. Sections 4, 5, and CC consist of dark olive gray faintly mottled and color-banded clay.
2	[Hatched pattern]	2		[Symbol]	[Symbol]			
3	[Hatched pattern]	3		[Symbol]	[Symbol]			
4	[Dotted pattern]	4		[Symbol]	[Symbol]			
5	[Dotted pattern]	5		[Symbol]	[Symbol]			
6	[Dotted pattern]	6		[Symbol]	[Symbol]			
7	[Dotted pattern]	7		[Symbol]	[Symbol]			
		CC		[Symbol]		M		



SITE 931 HOLE B CORE 12X

CORED 93.9 - 103.5 mbsf

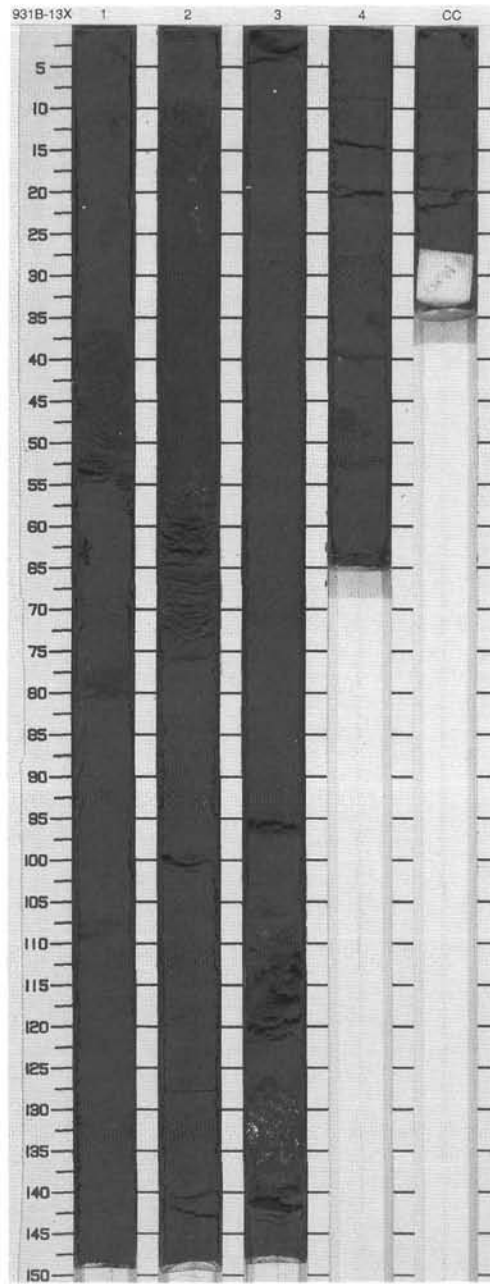
Meter	Graphic Lith.	Section	Age	Structure	Disturb	Sample	Color	Description
1	[Dotted pattern]	1	late Pleistocene	[Cloud symbol]	○		5Y 3/1	<p>CLAY</p> <p>Major Lithology: This core consists of very dark gray black (N1) color-banded and mottled clay.</p> <p>Minor Lithologies: Silt laminae are scattered throughout this core.</p>
2	[Dotted pattern]	2		[Cloud symbol]	○			
3	[Dotted pattern]	3		[Cloud symbol]	○			
4	[Dotted pattern]	4		[Cloud symbol]				
5	[Dotted pattern]	5		[Cloud symbol]				
6	[Dotted pattern]	5		[Cloud symbol]				
	[Dotted pattern]	CC				M		



SITE 931 HOLE B CORE 13X

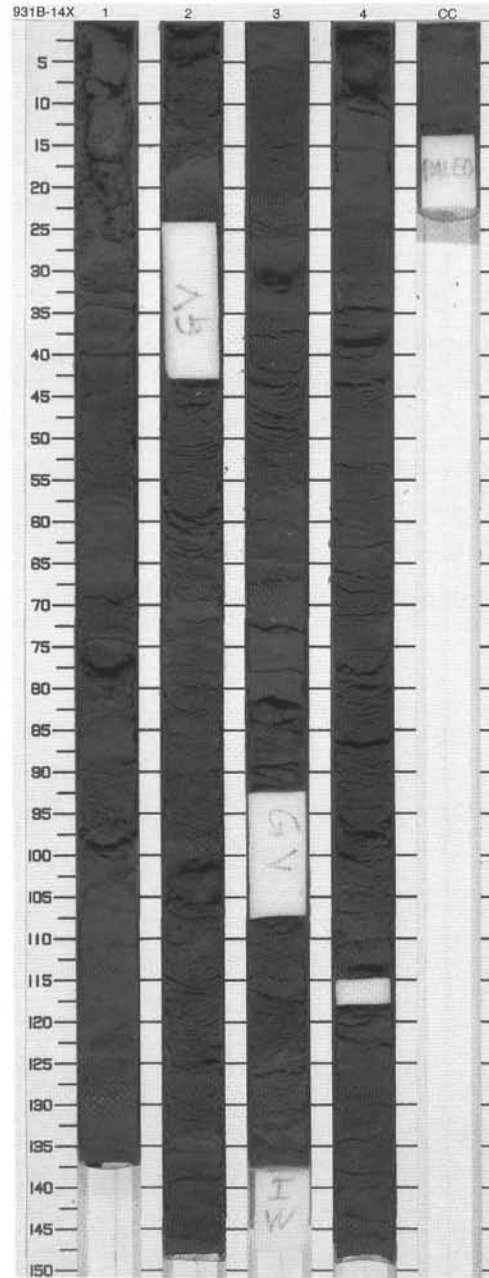
CORED 103.5 - 113.2 mbsf

Meter	Graphic Lith.	Section	Age	Structure	Disturb	Sample	Color	Description
1	[Dotted pattern]	1	late Pleistocene	[Horizontal lines]	[Vertical lines]		5Y 3/1	<p>CLAY, SILT LAMINAE, AND SILT AND FINE SAND BEDS</p> <p>Major Lithology: Very dark gray, faintly mottled and black color-banded (N1) clay is the dominant sediment type in this core. Silt laminae and thin to medium silt and fine sand beds are scattered through the core.</p> <p>Minor Lithology: In this core, silt laminae and rare graded silt beds (up to a maximum of 20 cm in thickness) occur.</p>
2	[Dotted pattern]	2		[Horizontal lines]	[Vertical lines]	[Small circles]		
3	[Dotted pattern]	3		[Horizontal lines]	[Vertical lines]	[Small circles]		
4	[Dotted pattern]	4		[Horizontal lines]	[Vertical lines]	[Small circles]		
5	[Dotted pattern]	4		[Horizontal lines]	[Vertical lines]	[Small circles]		
		CC				M		



SITE 931 HOLE B CORE 14X CORED 113.2 - 122.8 mbsf

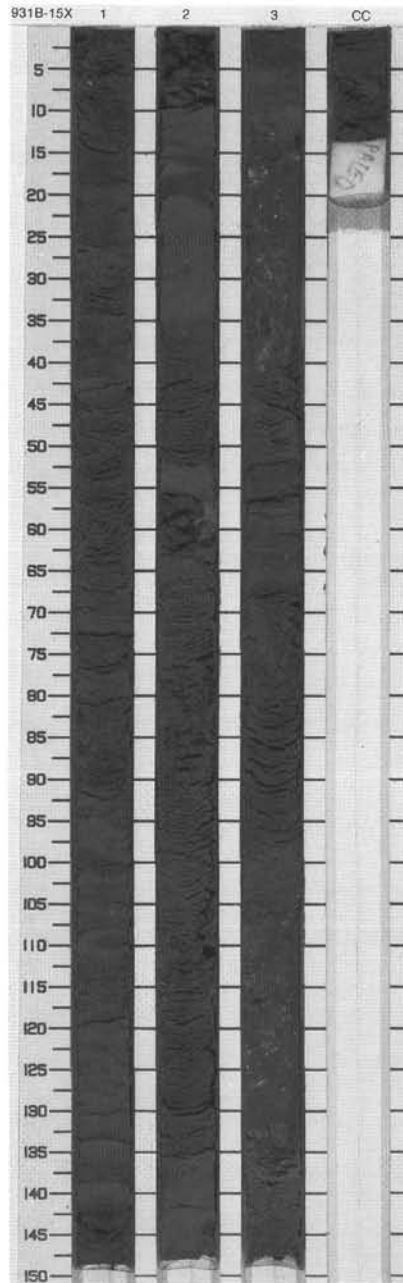
Meter	Graphic Lith.	Section	Age	Structure	Disturb	Sample	Color	Description
1	[Dotted pattern]	1	late Pleistocene	[Horizontal lines]	-		5Y 3/1	SILT AND SILT BEDS Major Lithology: Dark olive gray medium-bedded silt dominates the sediment within this core. Some silt beds are graded although coring procedure and splitting have destroyed primary fabric within many beds.
2		2						
3		3						
4		4						
6		CC				M		



SITE 931 HOLE B CORE 15X

CORED 122.8 - 132.5 mbsf

Meter	Graphic Lith.	Section	Age	Structure	Disturb	Sample	Color	Description
1	[Dotted pattern]	1	late Pleistocene	[Horizontal lines]	-		5Y 3/1	SILT Major Lithology: Very dark gray thin- and medium-bedded silts occur throughout this core.
2		2		[Horizontal lines]				
3		3		[Horizontal lines]				
4		CC		[Horizontal lines]				
						M		

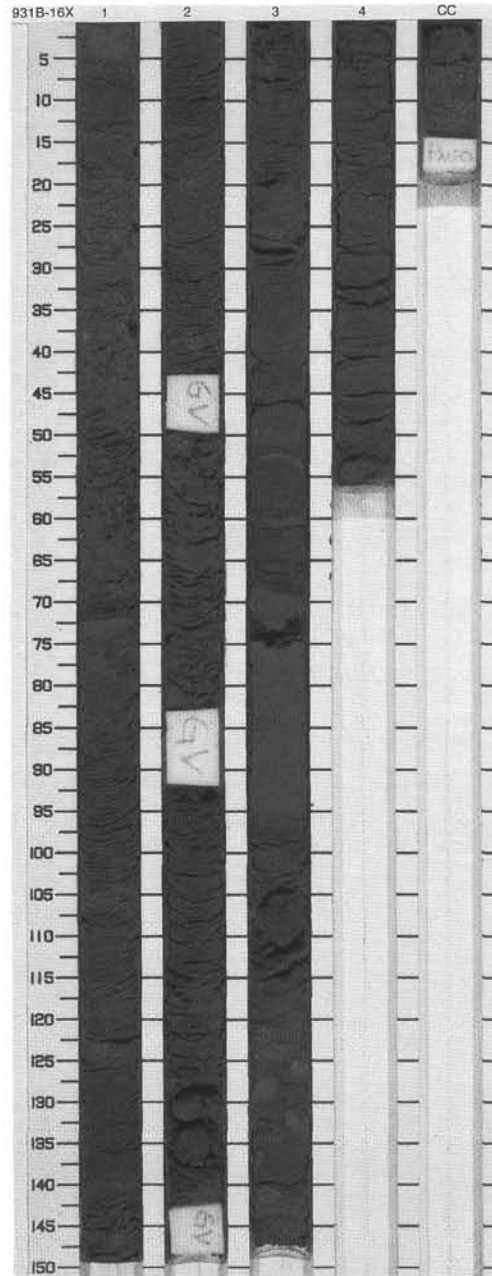


SITE 931 HOLE B CORE 16X CORED 132.5 - 142.2 mbsf

Meter	Graphic Lith.	Section	Age	Structure	Disturb	Sample	Color	Description
1		1	late Pleistocene	◆	○		5Y 3/1	<p>SILT</p> <p>Major Lithology: Very dark gray thick-bedded (>30 cm) silts dominate the lithology in this core.</p> <p>Minor Lithologies: Mud clasts (up to 3 cm in diameter) are found in Sections 1 and 3.</p>
2		2		○				
3		3		◆				
4		4		◆				
5		CC		○	M			

931B 17X NO RECOVERY

931B 18X NO RECOVERY



SITE 931 HOLE B CORE 21X CORED 180.7 - 190.2 mbsf

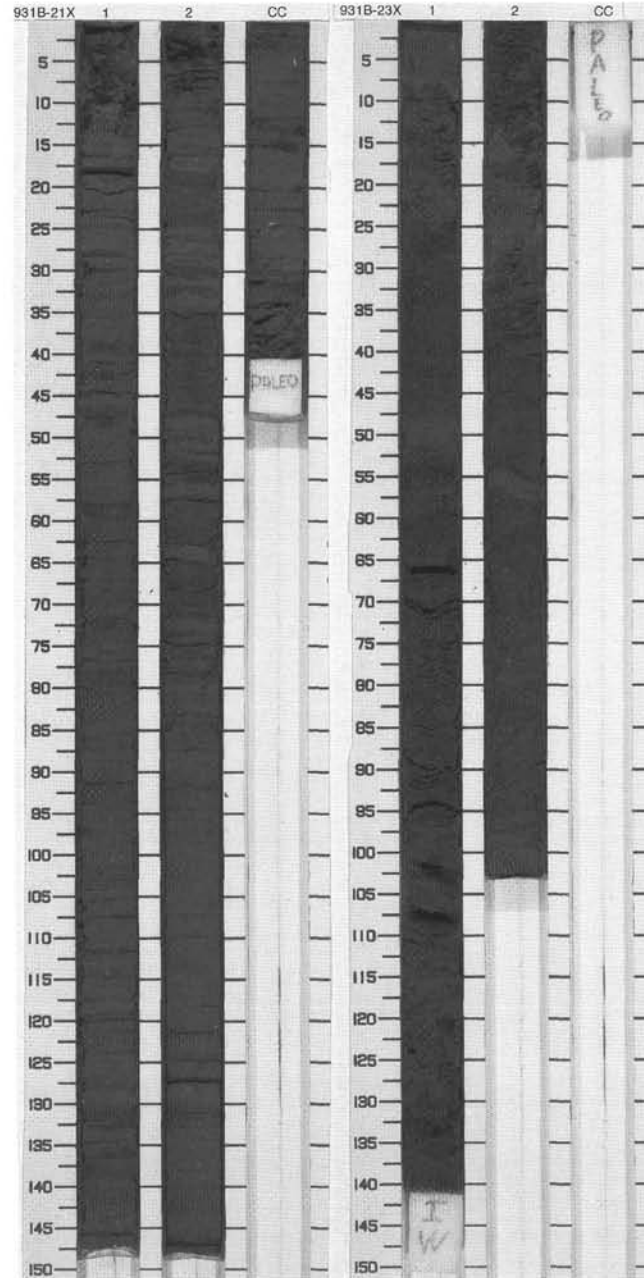
Meter	Graphic Lith.	Section	Age	Structure	Disturb	Sample	Color	Description
1		1	late Pleistocene				5Y 3/1	<p>CLAY, SILT AND SANDY SILT</p> <p>Major Lithology: The entire core contains very dark gray clays that are intercalated with silt laminae or centimeter-thick sandy silt beds occurring at 1- to 10-cm intervals.</p> <p>Minor Lithologies: Some of the thicker sandy silt beds are cross-laminated (135 cm and CC) and have sharp irregular basal contacts with the underlying clays.</p>
2		2						
3		CC				M		

931B 22X NO RECOVERY

SITE 931 HOLE B CORE 23X CORED 199.8 - 209.4 mbsf

Meter	Graphic Lith.	Section	Age	Structure	Disturb	Sample	Color	Description
1		1	late Pleistocene				5Y 3/1	<p>MUDDY SAND</p> <p>Major Lithology: The dominant sediment is a dark gray muddy sand containing several isolated mud clasts.</p> <p>Minor Lithology: Two 15-cm-thick sand beds are interbedded in the muddy sands at 125 and 175 cm. Between these sand beds the sediment consists of a dark gray sandy clay.</p>
2		2						
		CC				M		

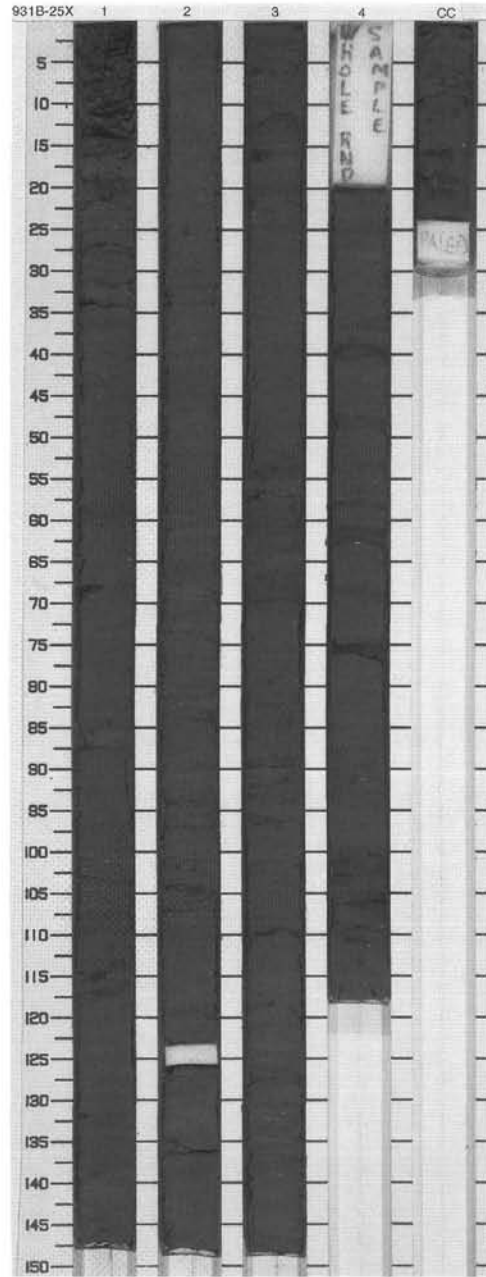
931B 24X NO RECOVERY



SITE 931 HOLE B CORE 25X

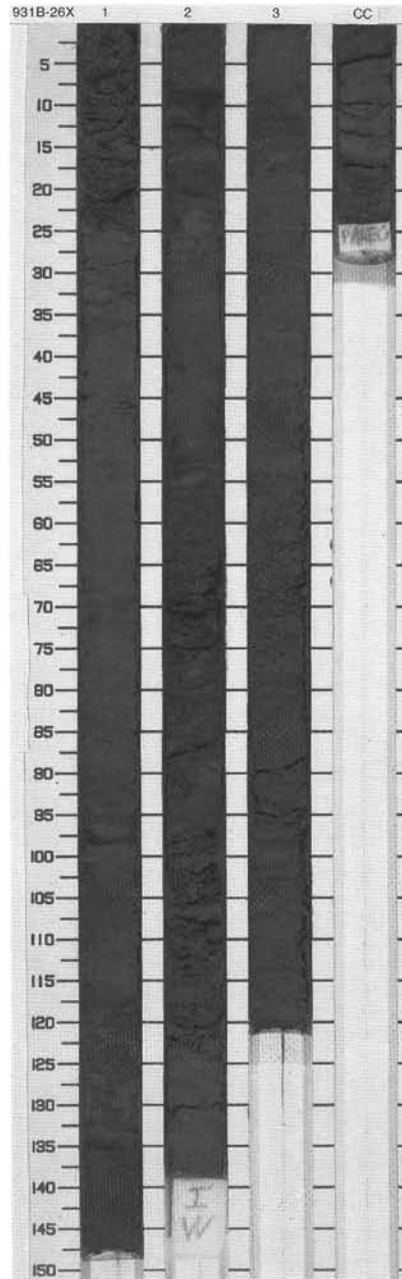
CORED 219.1 - 228.7 mbsf

Meter	Graphic Lith.	Section	Age	Structure	Disturb	Sample	Color	Description
1		1	late Pleistocene		W		5Y 3/1	<p>SILTY CLAY WITH SANDY SILT</p> <p>Major Lithology: This core consists of dark gray silty clay with numerous sandy silt laminae and beds between 1 mm and 10 cm in thickness.</p> <p>Minor Lithologies: Some of the thicker sand or silt beds are graded or contain cross-bedding. A few mud clasts were found in the uppermost 100 cm of Section 1. The intervals containing silty clays are faintly black color banded (N1) or mottled.</p>
2		2						
3		3						
4		4						
5	Void					W		
		CC				M		



SITE 931 HOLE B CORE 26X CORED 228.7 - 238.4 mbsf

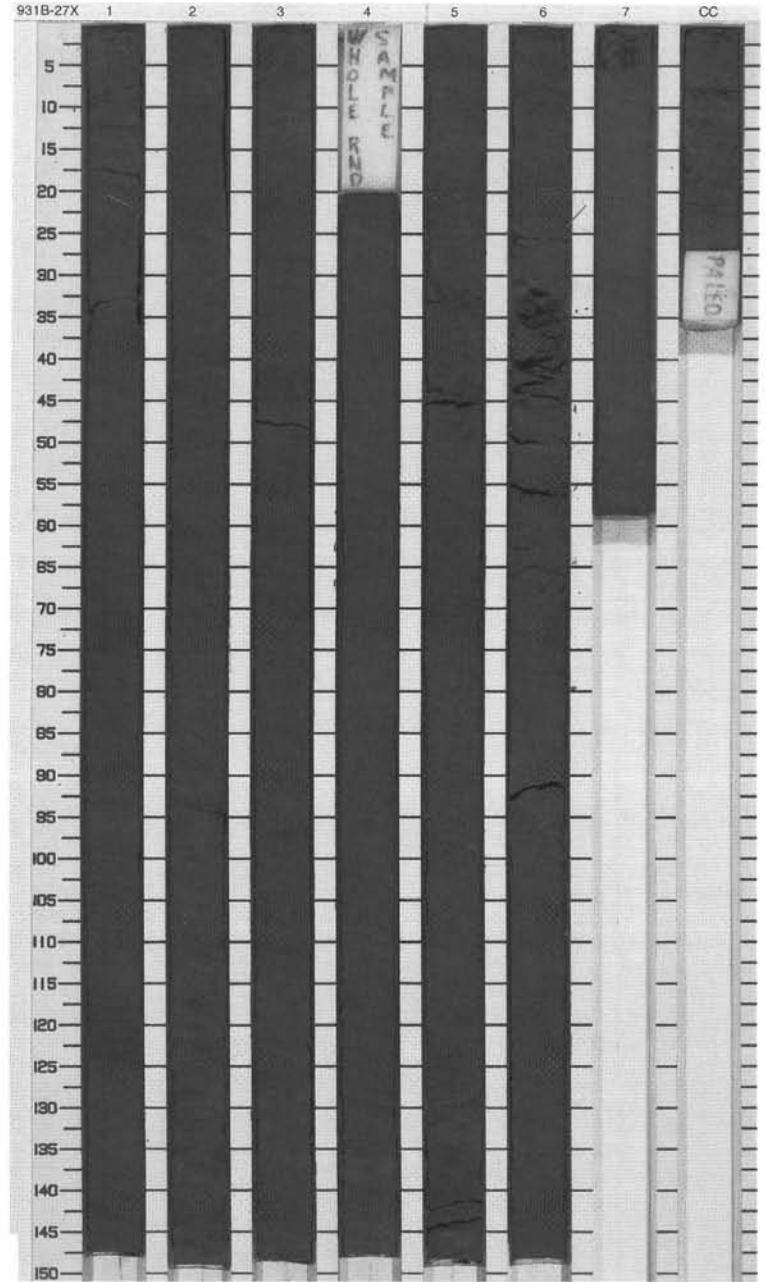
Meter	Graphic Lith.	Section	Age	Structure	Disturb	Sample	Color	Description
1		1	late Pleistocene	2	W		5Y 3/1	SANDY MUD Major Lithology: Muddy sand intercalated in sandy mud is the dominant sediment type in this core. Contorted bedding and mud clasts are found throughout.
2		2		XXX				
3		3			I			
4		4			M			
		CC						



SITE 931 HOLE B CORE 27X

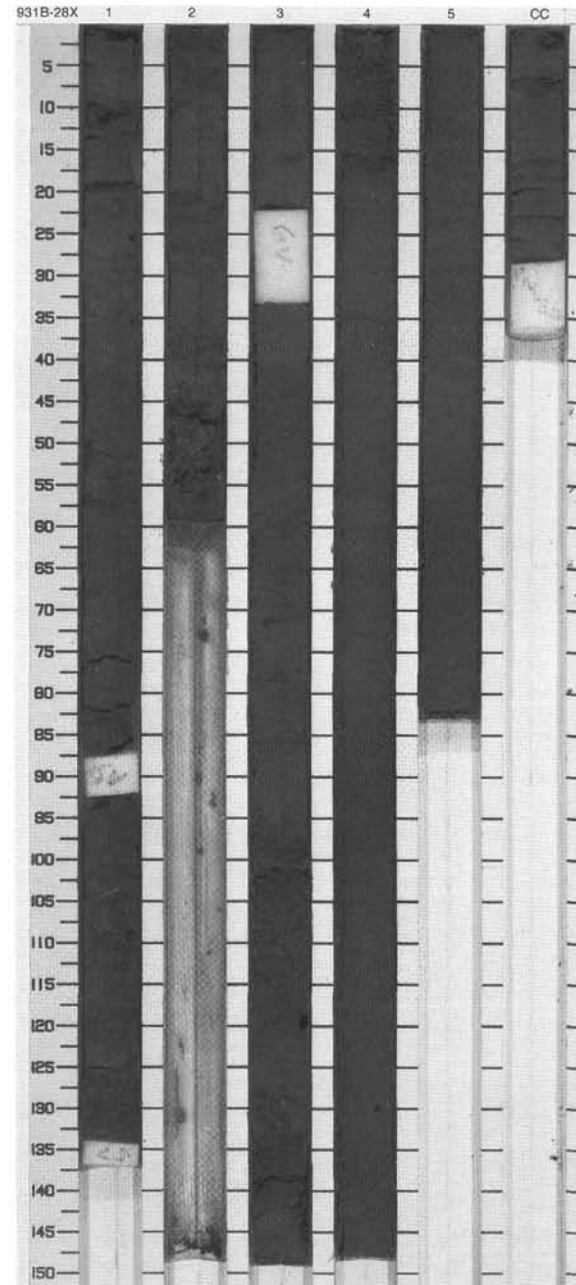
CORED 238.4 - 248.0 mbsf

Meter	Graphic Lith.	Section	Age	Structure	Disturb	Sample	Color	Description
0								<p>SILTY CLAY, SILT LAMINAE, AND SANDY SILT BEDS</p> <p>Major Lithology: The sediment predominantly consists of dark gray clay and contains several sandy silt laminae and thin beds.</p>
1		1			X			
2		2			X			
3		3			X			
4	Void				X			
5			late Pleistocene		X	W	5Y 3/1	
6					X			
7					X			
8					X			
9					X			
		CC				M		



SITE 931 HOLE B CORE 28X CORED 248.0 - 257.7 mbsf

Meter	Graphic Lith.	Section	Age	Structure	Disturb	Sample	Color	Description
1	[Hatched pattern]	1	late Pleistocene	[Horizontal dashes]	[Vertical wavy lines]		5Y 3/1	<p>SILTY CLAY AND SANDY MUD</p> <p>Major Lithology: In Sections 1 and the top 50 cm of Section 2, the lithology is dominated by silty clay. Below 20 cm in Section 4, the core consists of sandy mud. In the interval Section 2, 50 cm, through Section 4, 20 cm, decimeter-thick sand layers are intercalated in the silty clays.</p> <p>Minor Lithologies: The sandy muds in Sections 4 and 5 contain plant debris.</p>
2	[Dotted pattern]	2		[Horizontal dashes]	[Vertical wavy lines]			
3	[Hatched pattern]	3		[Horizontal dashes]	[Vertical wavy lines]			
4	[Dotted pattern]	4		[Horizontal dashes]	[Vertical wavy lines]			
5	[Dotted pattern]	4		[Horizontal dashes]	[Vertical wavy lines]			
6	[Dotted pattern]	5		[Horizontal dashes]	[Vertical wavy lines]			
7	[Dotted pattern]	CC		[Horizontal dashes]	[Vertical wavy lines]	M		
	Void							

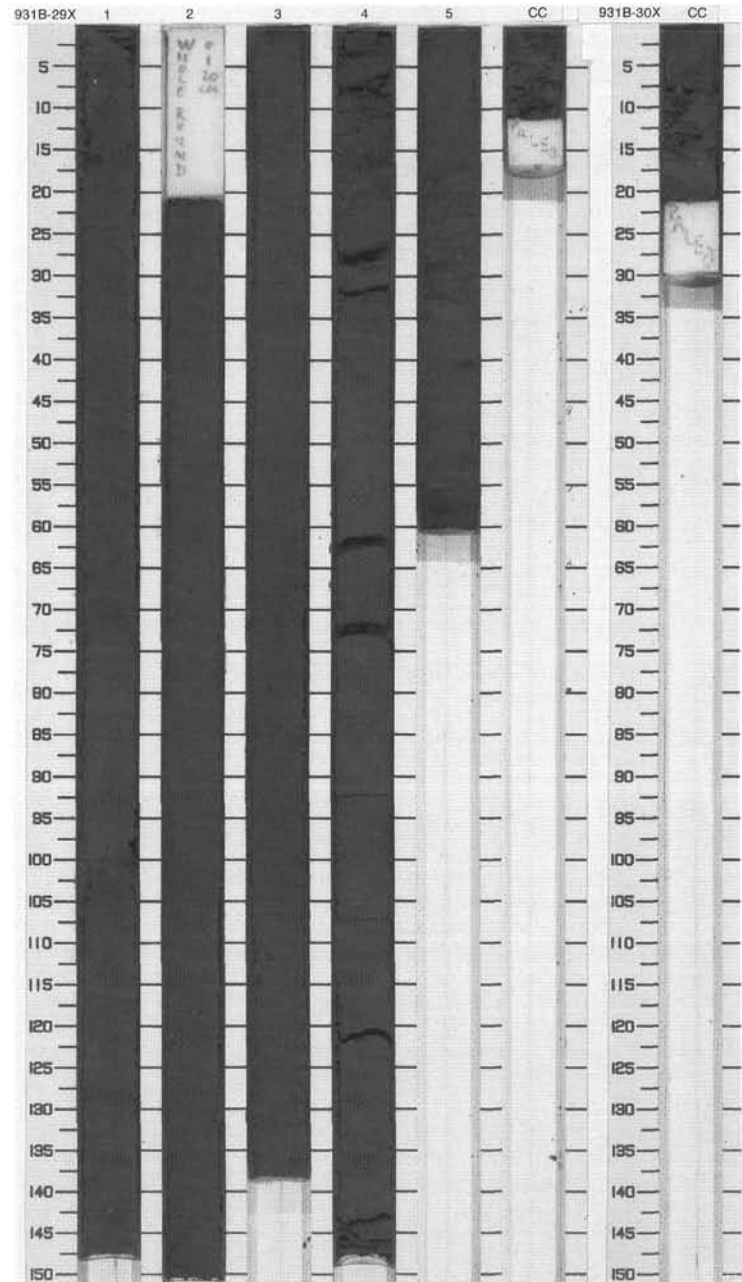


SITE 931 HOLE B CORE 29X CORED 257.7 - 267.3 mbsf

Meter	Graphic Lith.	Section	Age	Structure	Disturb	Sample	Color	Description
1	[Stippled pattern]	1	late Pleistocene		XX			<p>SANDY MUD AND SILTY CLAY</p> <p>Major Lithology: The dominant sediments are dark gray sandy mud and silty clay. Sand and silt lenses are disseminated through the clays.</p> <p>Minor Lithologies: The silty clay in Section 3 contains mud clasts. Section 5 sands contain plant debris.</p>
2	[Stippled pattern]	2		Void	XXXX	W		
3	[Stippled pattern]	3					5Y 3/1	
4	[Stippled pattern]	4			◆	XX	I	
5	[Stippled pattern]	5			◆	XXXX		
6	[Horizontal line pattern]	6			XXXX			
	[Stippled pattern]	CC				M		

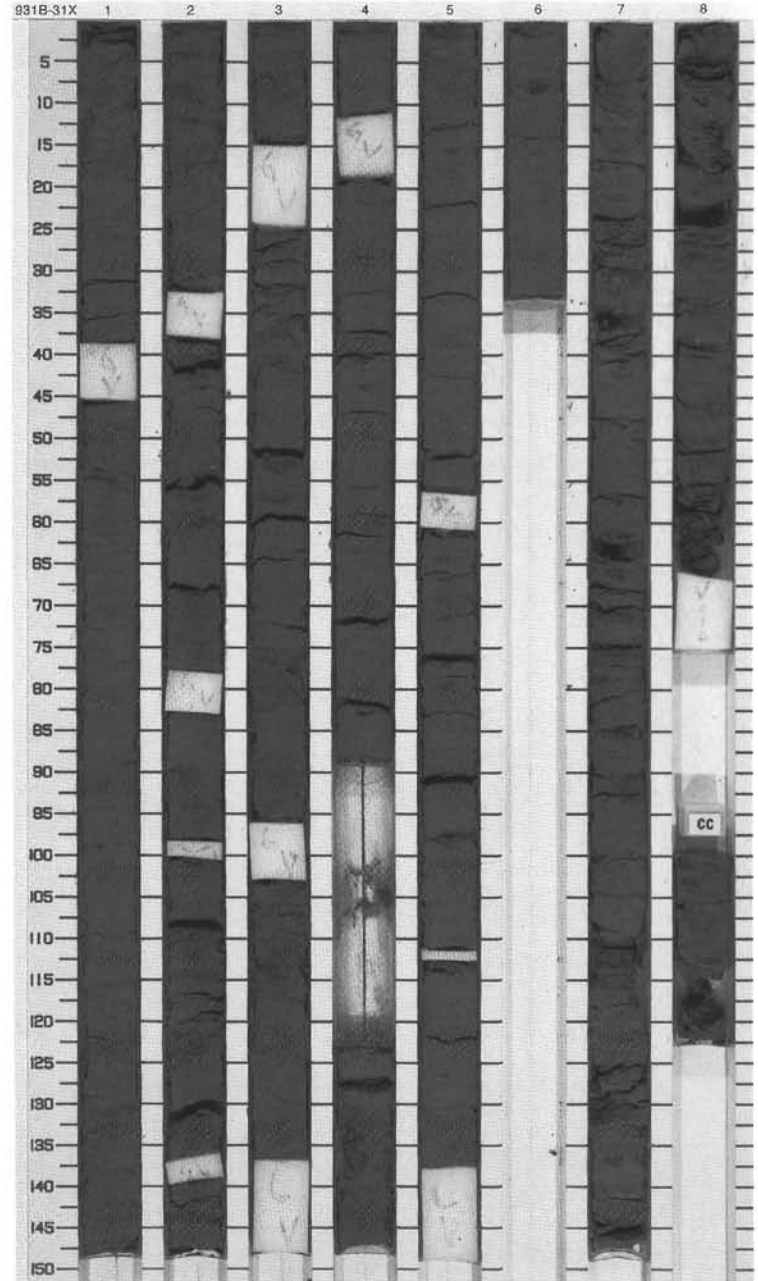
SITE 931 HOLE B CORE 30X CORED 267.3 - 276.9 mbsf

Meter	Graphic Lith.	Section	Age	Structure	Disturb	Sample	Color	Description
	[Horizontal line pattern]	CC	late Pleist.		W	M		<p>SILTY CLAY AND SAND</p> <p>Major Lithology: Similar lithology to that recorded in Cores 27, 28, and 29. Highly disturbed.</p>



SITE 931 HOLE B CORE 31X CORED 276.9 - 286.6 mbsf

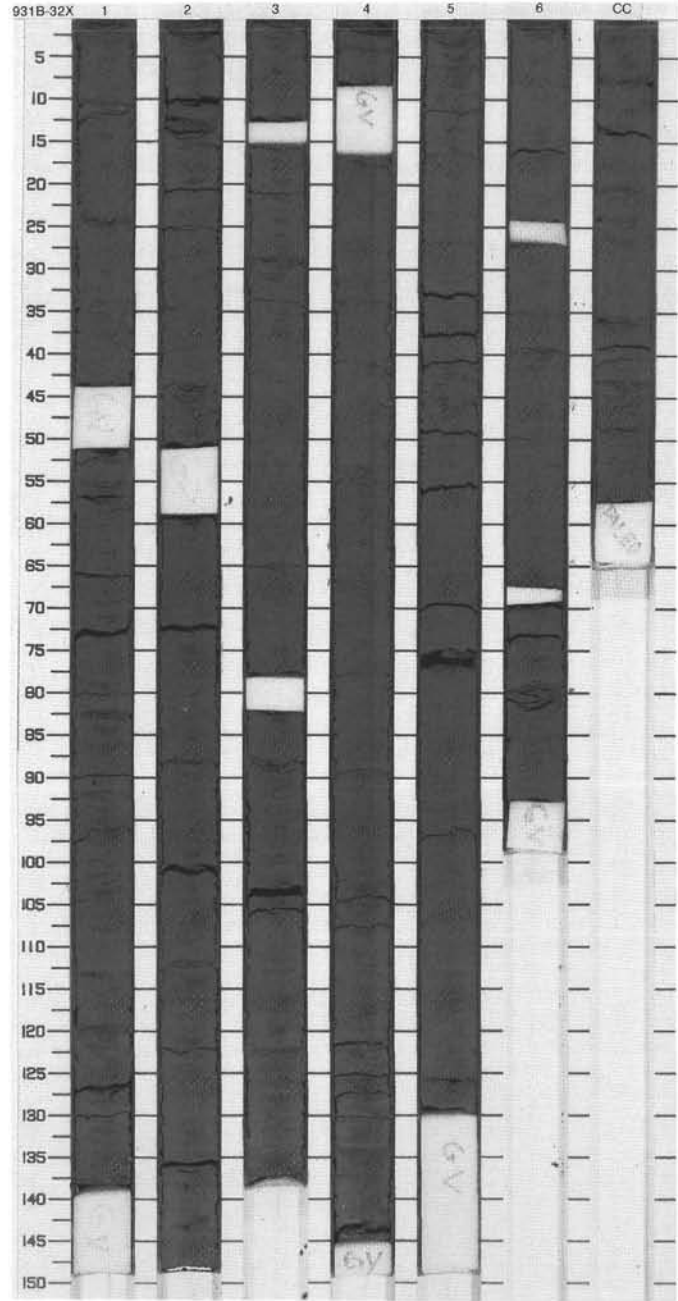
Meter	Graphic Lith.	Section	Age	Structure	Disturb	Sample	Color	Description
1	[Hatched pattern]	1		[Wavy line]	[X pattern]			<p>SILTY CLAY</p> <p>Major Lithology: Slightly bioturbated very dark gray silty clay is the dominant lithology in this core.</p> <p>General Description: The sediment in this core contains numerous drilling biscuits. Sections 7 and 8 are unorientated and disturbed due to the recovery operation.</p>
2	[Hatched pattern]	2		[Wavy line]	[X pattern]			
3	[Hatched pattern]	3		[Wavy line]	[X pattern]			
4	[Hatched pattern]	3	late Pleistocene	[Wavy line]	[X pattern]			
5	[Hatched pattern]	4		[Wavy line]	[X pattern]		5Y 3/1	
6	[Hatched pattern]	5		[Wavy line]	[X pattern]			
7	[Hatched pattern]	6		[Wavy line]	[X pattern]			
8	[Hatched pattern]	7		[Wavy line]	[X pattern]			
9	[Hatched pattern]	8		[Wavy line]	[X pattern]			
10	[Hatched pattern]	CC		[Wavy line]	[X pattern]		M	



SITE 931 HOLE B CORE 32X

CORED 286.6 - 296.2 mbsf

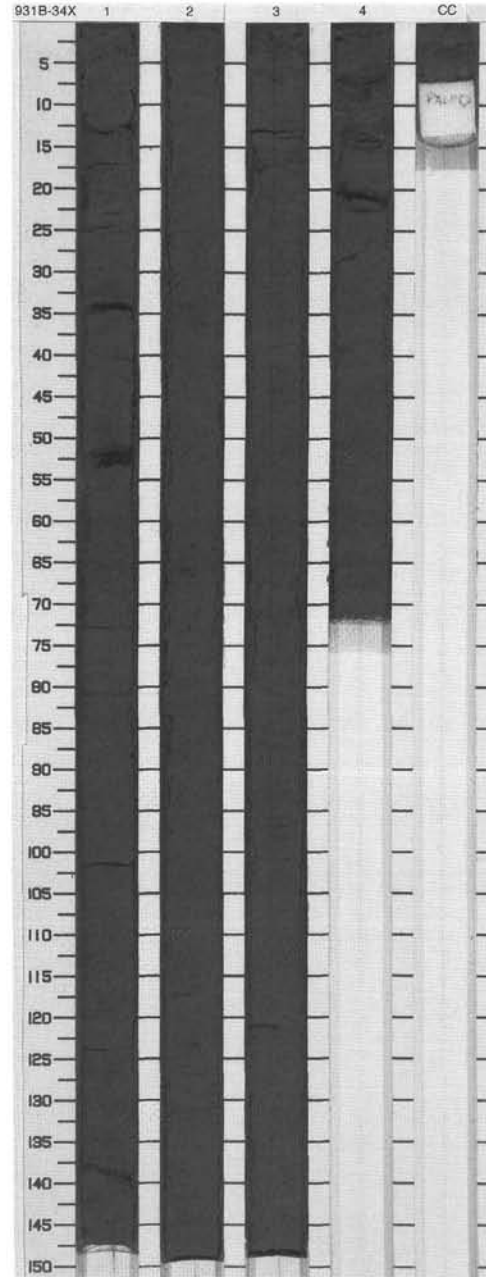
Meter	Graphic Lith.	Section	Age	Structure	Disturb	Sample	Color	Description
1	[Dotted pattern]	1	late Pleistocene	}	XXXX	I	5Y 3/1	<p>CLAY</p> <p>Major Lithology: Very dark gray, slightly bioturbated clay dominates the lithology in this core.</p> <p>General Description: The core consists of 1-5-cm-size drilling biscuits.</p>
2	[Dotted pattern]	2						
3	[Dotted pattern]	3						
4	[Dotted pattern]	4						
5	[Dotted pattern]	5						
6	[Dotted pattern]	6						
7	[Dotted pattern]	5						
8	[Dotted pattern]	6						
9	[Dotted pattern]	CC						
						M		



SITE 931 HOLE B CORE 34X

CORED 305.8 - 315.5 mbsf

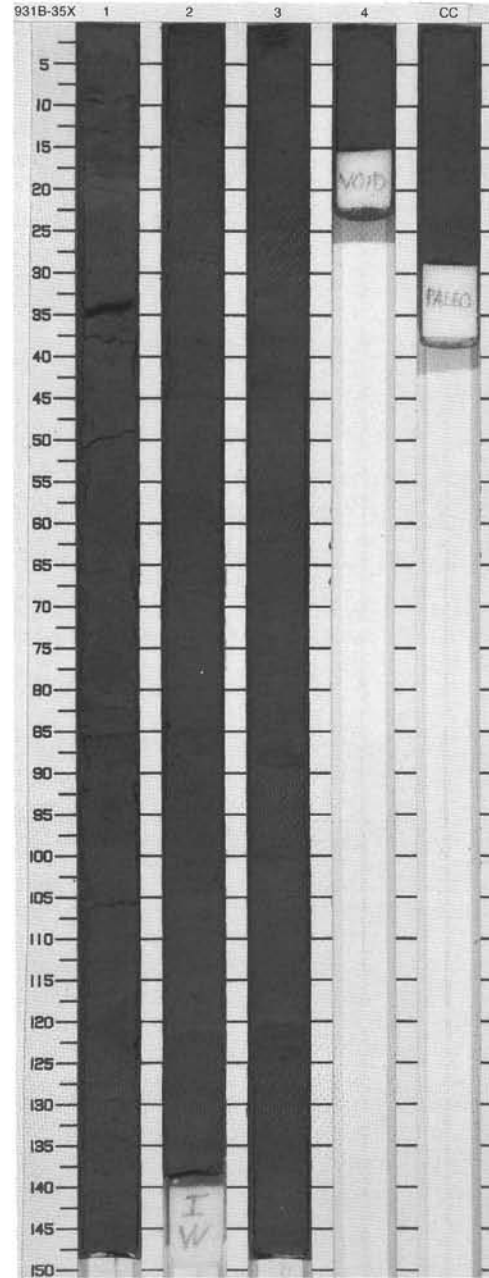
Meter	Graphic Lith.	Section	Age	Structure	Disturb	Sample	Color	Description
1	[Hatched pattern]	1	late Pleistocene	[Cloud symbol]	[X pattern]		5Y 2.5/2	<p>SILTY CLAY</p> <p>Major Lithology: Black slightly bioturbated and mottled silty clay is the dominant lithology in this core.</p> <p>General Description: This core contains some drilling biscuits.</p>
2	[Hatched pattern]	2		[Cloud symbol]	[X pattern]			
3	[Hatched pattern]	3		[Cloud symbol]	[X pattern]			
4	[Hatched pattern]	4		[Cloud symbol]	[X pattern]			
5	[Hatched pattern]	CC				M		



SITE 931 HOLE B CORE 35X

CORED 315.5 - 325.1 mbsf

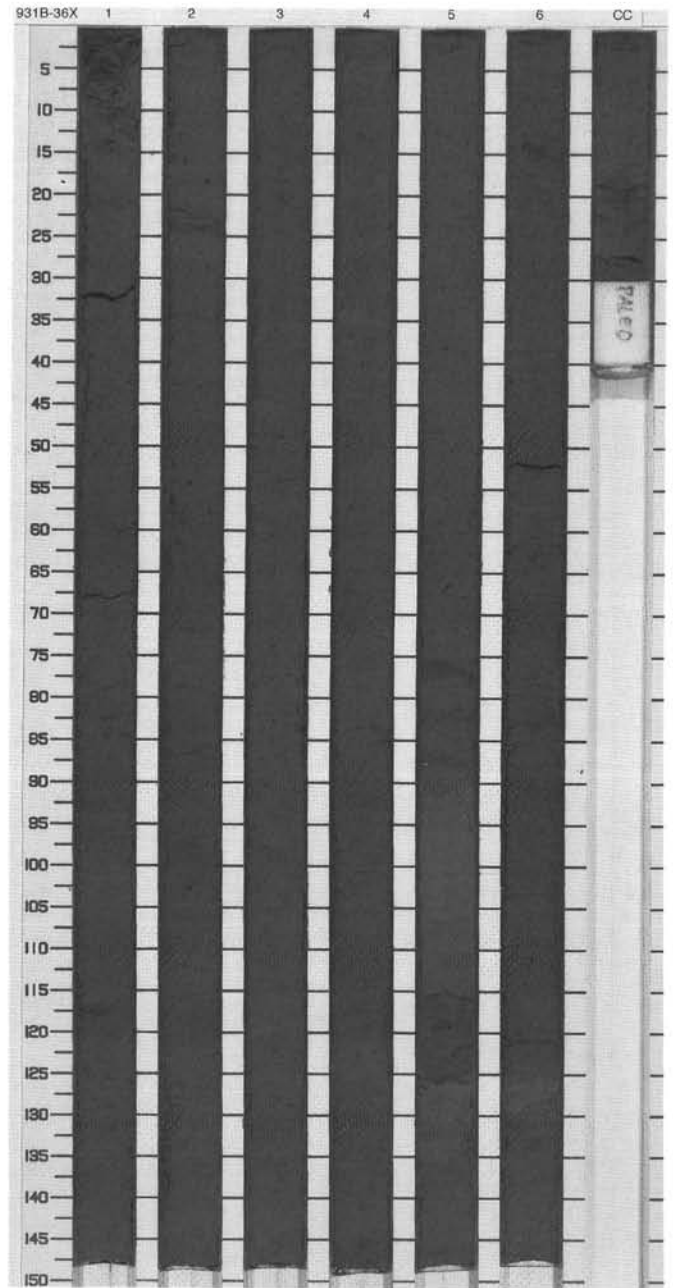
Meter	Graphic Lith.	Section	Age	Structure	Disturb	Sample	Color	Description
1		1			X			SILTY CLAY Major Lithology: Very dark gray color-banded and mottled (N1) silty clay dominates the lithology in this core. Minor Lithologies: Silt laminae occur throughout Section 3.
2		2	late Pleistocene		X		5Y 3/1	
3		3			X	I		
4		4			X			
5		CC			X	M		



SITE 931 HOLE B CORE 36X

CORED 325.1 - 334.8 mbsf

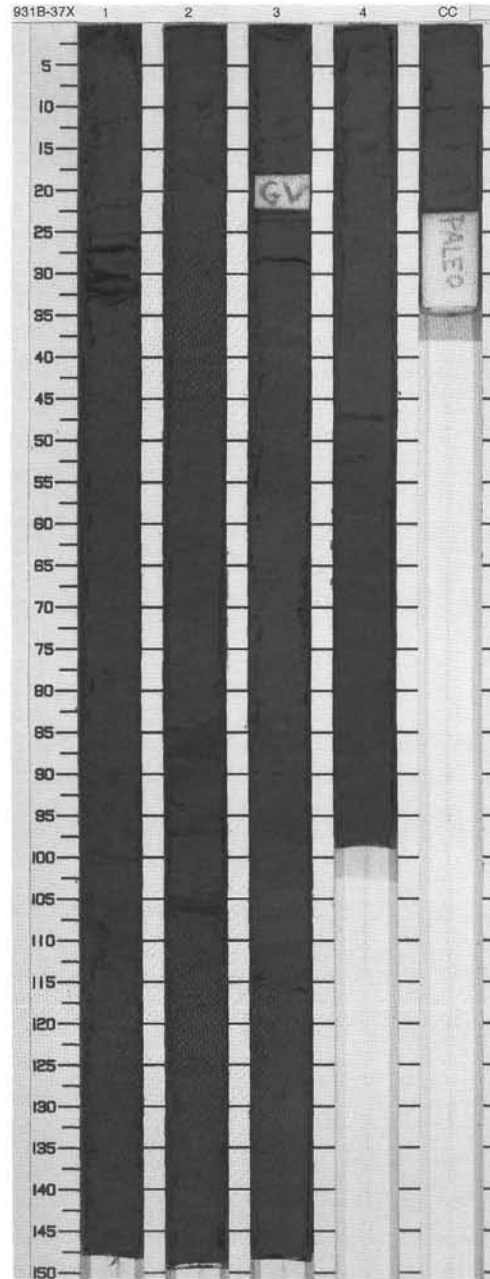
Meter	Graphic Lith.	Section Age	Structure	Disturb	Sample	Color	Description
1	[Dotted pattern]	late Pleistocene	[Three horizontal lines]	X		5Y 4/1 To 5Y 3/2	<p>CLAY WITH MUD CLASTS</p> <p>Major Lithology: The core consists of variegated dark gray to black clays. Isolated mud clasts of various sizes (centimeter to decimeter scale) occur in all sections. The clays are faintly black mottled or color banded.</p> <p>Minor Lithologies: In Section 5, the interval between 75 and 125 cm is a foraminifer-nannofossil mud clast that is surrounded by distorted sand/silt beds.</p>
2	[Dotted pattern]		[Three horizontal lines]	X			
3	[Dotted pattern]		[Three horizontal lines]	X		5Y 4/1	
4	[Dotted pattern]		[Floral symbol]	X			
5	[Dotted pattern]		[Floral symbol]	X			
6	[Dotted pattern]		[Floral symbol]	X		5Y 5/1 To 2.5Y N2/0	
7	[Dotted pattern]		[Floral symbol]	X			
8	[Dotted pattern]		[Floral symbol]	X		5Y 4/1	
9	[Dotted pattern]		[Floral symbol]	X		5Y 3/1	
CC	[Dotted pattern]	[Floral symbol]	X	M			



SITE 931 HOLE B CORE 37X

CORED 334.8 - 344.4 mbsf

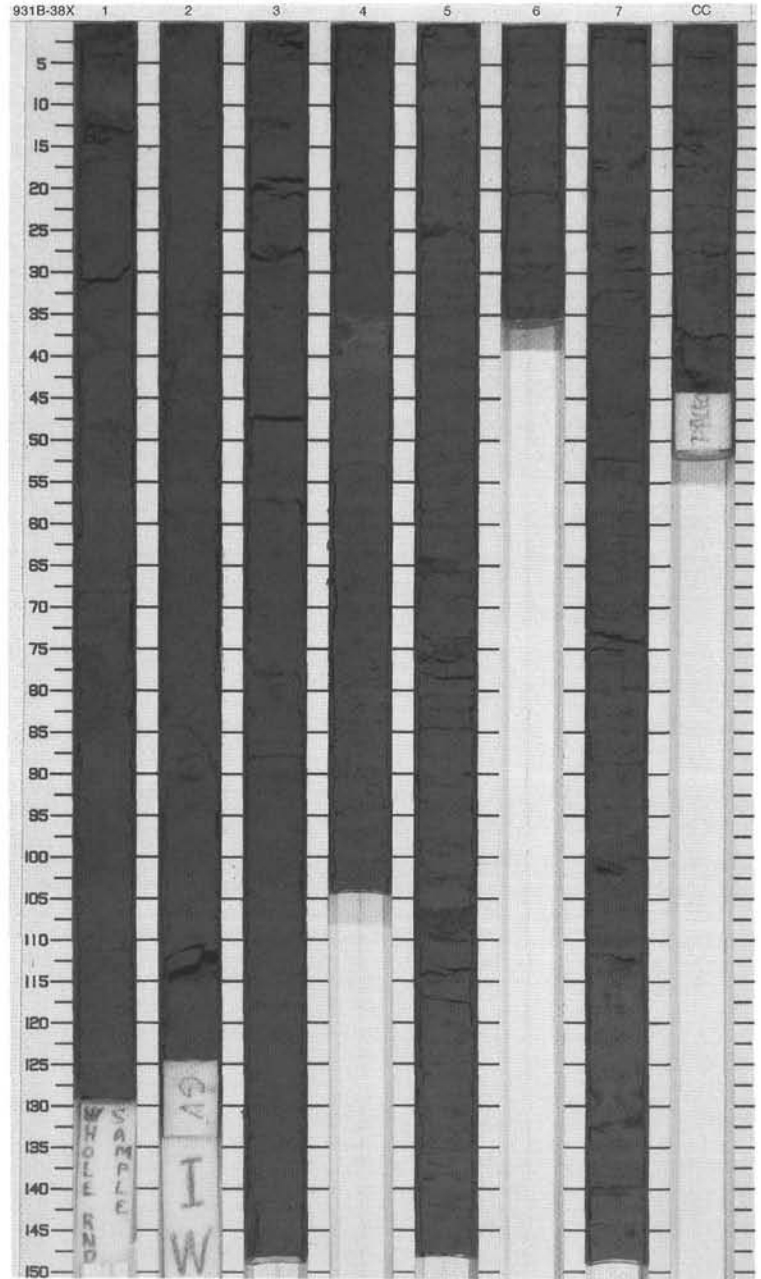
Meter	Graphic Lith.	Section	Age	Structure	Disturb	Sample	Color	Description
1		1	late Pleistocene	III	X		5Y 3/1	<p>SILTY CLAY</p> <p>Major Lithology: Silty clay with abrupt color change varying between dark gray, olive gray, and black is the dominant sediment in this core.</p> <p>Minor Lithologies: A few distorted and discontinuous silt beds and silt/sand lenses are irregularly interbedded in Sections 1 and 2.</p>
1		1		II	X		5Y 4/1 To 5Y 3/1	
2		2		II	X		5Y 3/1	
3		3		II	X		5Y 4/1	
4		4		II	X		5Y 4/1 To 5Y 3/1	
5		CC				5Y 3/1	M	



SITE 931 HOLE B CORE 38X

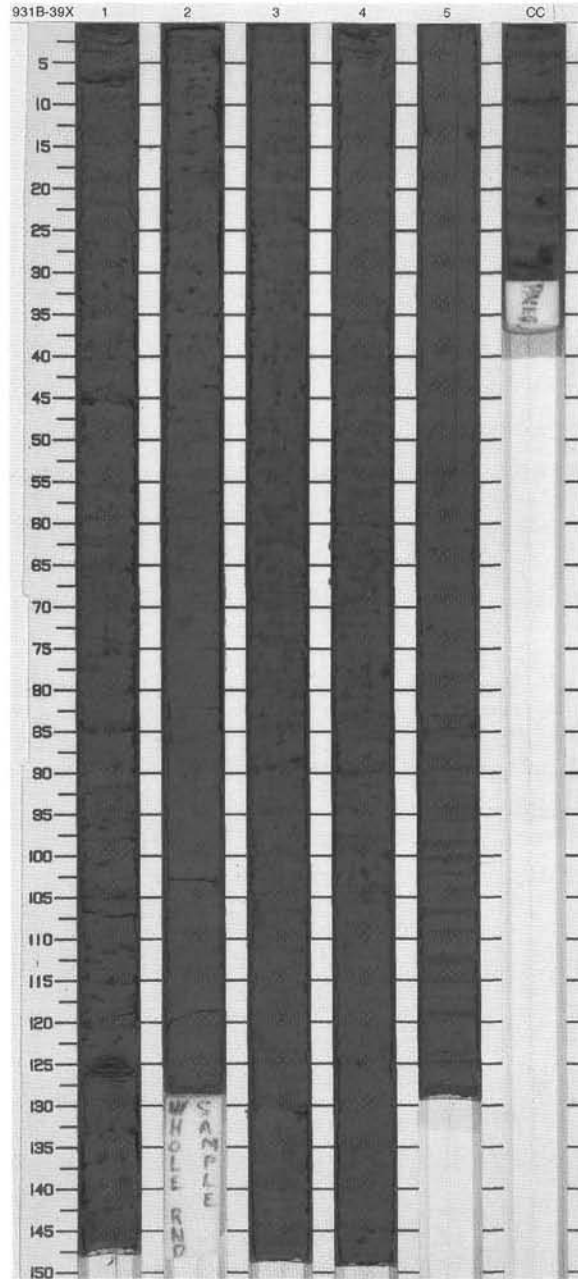
CORED 344.4 - 354.1 mbsf

Meter	Graphic Lith.	Section	Age	Structure	Disturb	Sample	Color	Description
1	[Hatched pattern]	1	late Pleistocene	[Symbol]	XX	P	5Y 3/1	SILTY CLAY WITH MUD CLAST, FORAMINIFER-NANNOFOSSIL CLAY and SILTY CLAY Major Lithologies: Sediment in this core can be subdivided into three main lithologies. The first extends from the top of the core to Section 4 at 35 cm. The sediment consists of convolute and contorted mud clasts and distorted silt laminae. The second consists of a foraminifer-nannofossil-rich clay. Below 41 cm in Section 4, a dark gray clay dominates the lithology.
2	[Hatched pattern]	2		[Symbol]	XX			
3	[Hatched pattern]	3		[Symbol]	X			
4	[Hatched pattern]	4		[Symbol]				
5	[Dotted pattern]	5	middle Pleistocene	[Symbol]		I	10Y 4/1	
6	[Dotted pattern]	6		[Symbol]	X			
7	[Dotted pattern]	7		[Symbol]	XX			
8	[Dotted pattern]	8		[Symbol]				
9	[Dotted pattern]	9		[Symbol]	X			
CC						M		



SITE 931 HOLE B CORE 39X CORED 354.1 - 363.7 mbsf

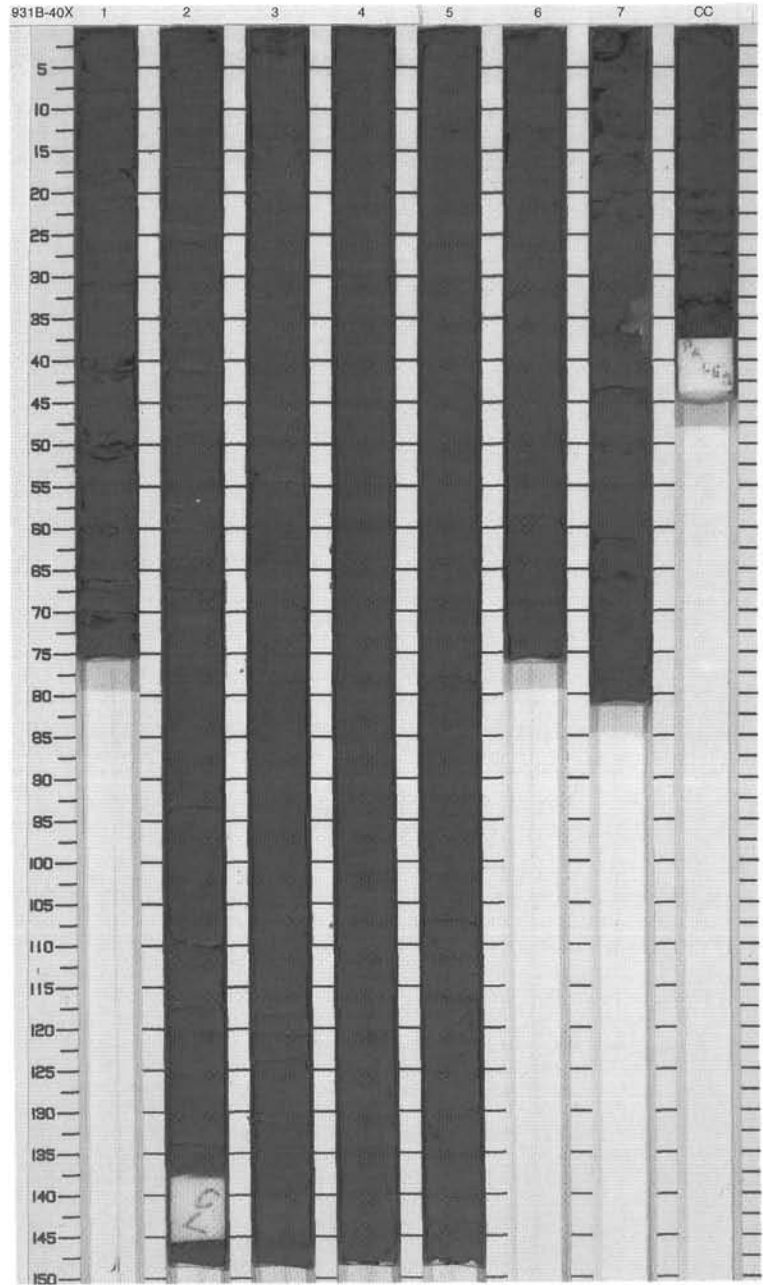
Meter	Graphic Lith.	Section	Age	Structure	Disturb	Sample	Color	Description
1	[Hatched pattern]	1	middle Pleistocene	[Floral symbol]	[X]	P	5Y 3/1	<p>SILTY CLAY</p> <p>Major Lithology: Very dark gray faintly mottled (N1) silty clay is the dominant lithology in this core. Sections 5 and CC contain numerous silt laminae.</p> <p>General Description: Drilling disturbance occurs throughout this core.</p>
2	[Hatched pattern]	2		[Floral symbol]	[X]			
3	[Hatched pattern]	3		[Floral symbol]	[X]			
4	[Hatched pattern]	4		[Floral symbol]	[X]			
5	[Hatched pattern]	5		[Floral symbol]	[X]			
6	[Hatched pattern]	6		[Floral symbol]	[X]			
7	[Hatched pattern]	7		[Floral symbol]	[X]			
	[Vertical lines pattern]	CC		[Floral symbol]	[X]	M		



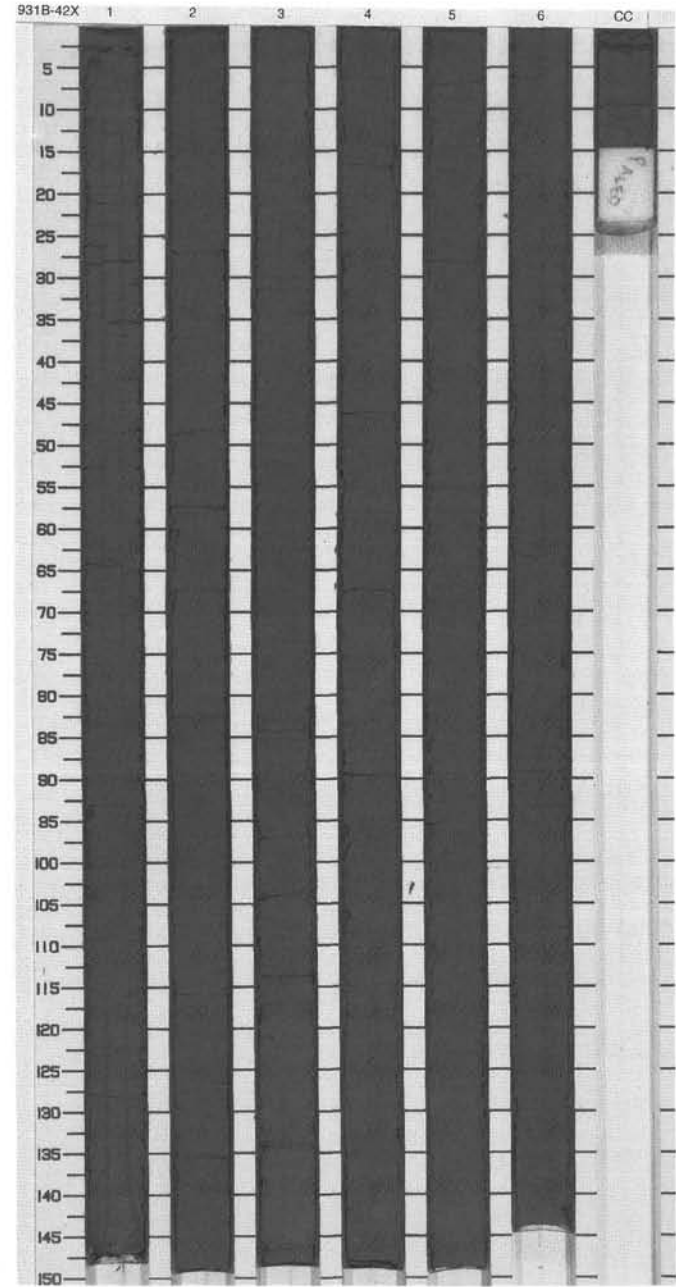
SITE 931 HOLE B CORE 40X

CORED 363.7 - 373.4 mbsf

Meter	Graphic Lith.	Section	Age	Structure	Disturb	Sample	Color	Description
1	[Hatched pattern]	1	middle Pleistocene	[Vertical lines]	X		5Y 3/1	SILTY CLAY AND SILT LAMINAE Major Lithology: This core consists of very dark gray silty clay. Sections 1 to 4 contain numerous silt laminae. Sections 5, 6, 7, and CC are faintly mottled very dark gray silt clay.
2	[Hatched pattern]	2		[Vertical lines]	X			
3	[Hatched pattern]	3		[Vertical lines]	X			
4	[Hatched pattern]	4		[Vertical lines]	X			
5	[Hatched pattern]	5		[Vertical lines]	X			
6	[Hatched pattern]	6		[Vertical lines]	X			
7	[Hatched pattern]	7		[Vertical lines]	X			
8	[Hatched pattern]	7		[Vertical lines]	X			
	[Hatched pattern]	CC		[Vertical lines]	X		5Y 3/1 To 5Y 3/2	
					X	M		



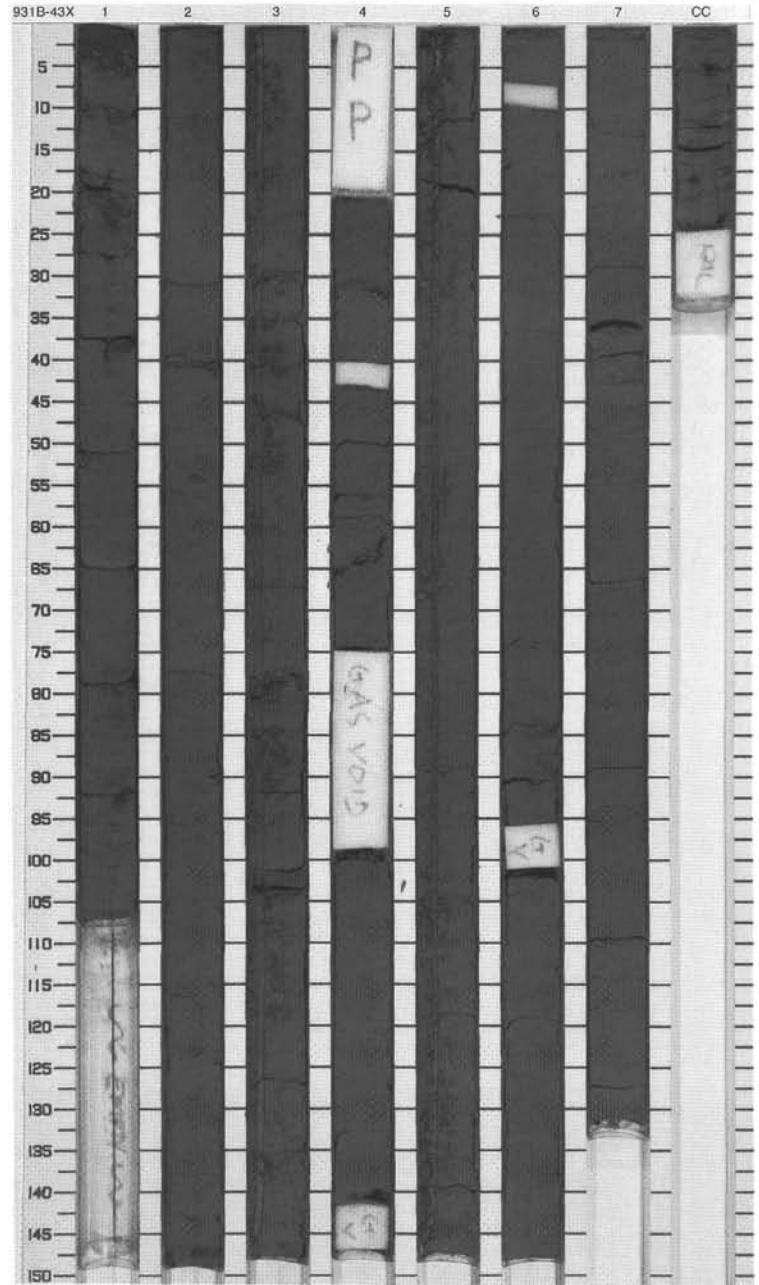
Meter	Graphic Lith.	Section	Age	Structure	Disturb	Sample	Color	Description
1	[Hatched pattern]	1	middle Pleistocene	[Symbol]			5Y 3/1	<p>SILTY CLAY</p> <p>Major Lithology: This core consists of very dark gray faintly mottled and color-banded (N1) silty clay.</p> <p>Minor Lithologies: Silt laminae are rare throughout this core.</p>
2	[Hatched pattern]	2		[Symbol]				
3	[Hatched pattern]	3		[Symbol]	X			
4	[Hatched pattern]	4		[Symbol]	X			
5	[Hatched pattern]	5		[Symbol]	X			
6	[Hatched pattern]	6		[Symbol]	X			
7	[Hatched pattern]	5		[Symbol]	X			
8	[Hatched pattern]	6		[Symbol]	X			
9	[Hatched pattern]	6		[Symbol]	X			
		CC				M		



SITE 931 HOLE B CORE 43X

CORED 392.4 - 401.9 mbsf

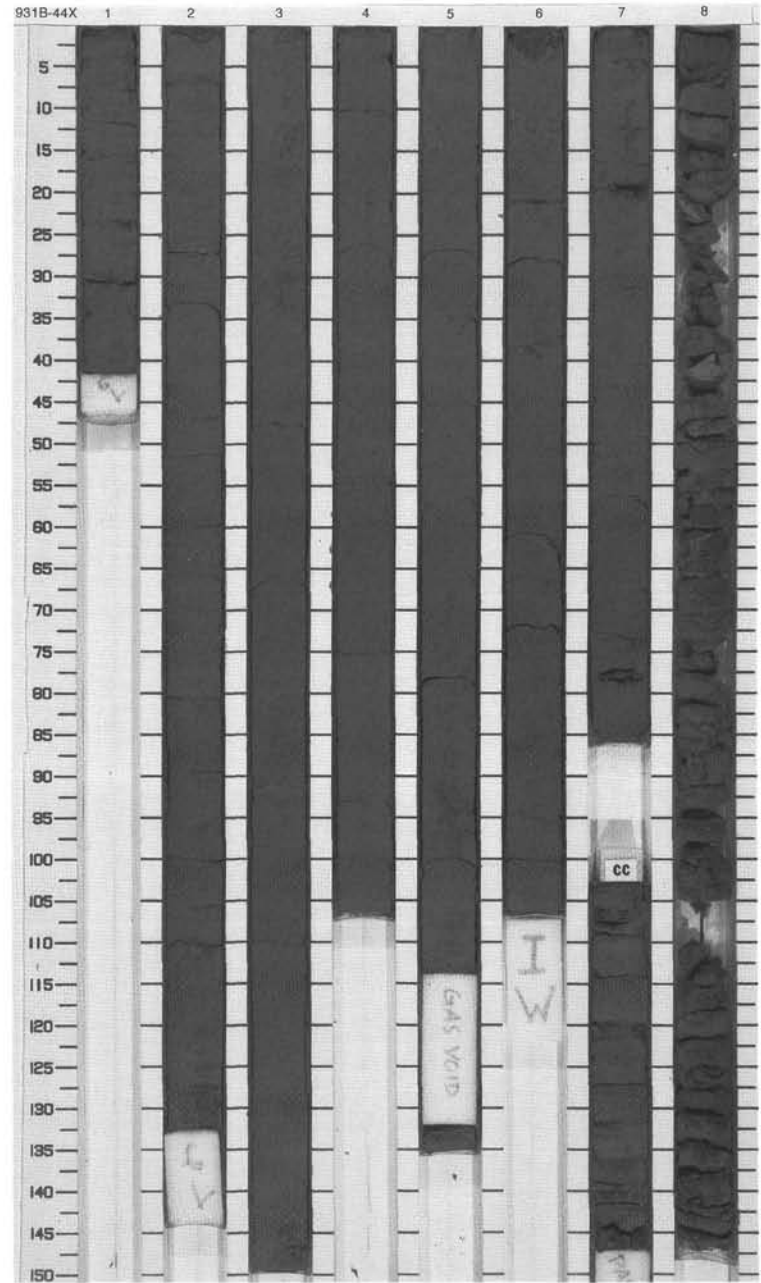
Meter	Graphic Lith.	Section	Age	Structure	Disturb	Sample	Color	Description
1	[Hatched pattern]	1						<p>SILTY CLAY</p> <p>Major Lithology: This core consists of faintly color-banded (N1) and slightly bioturbated silty clay.</p>
2	[Hatched pattern]	2						
3	[Hatched pattern]	3						
4	[Hatched pattern]	4						
5	[Hatched pattern]	4						
5	Void			~			5Y 3/2	
6	[Hatched pattern]	5						
7	[Hatched pattern]	5						
8	[Hatched pattern]	6						
9	[Hatched pattern]	7						
10	[Hatched pattern]	CC			I	M		



SITE 931 HOLE B CORE 44X

CORED 401.9 - 411.6 mbsf

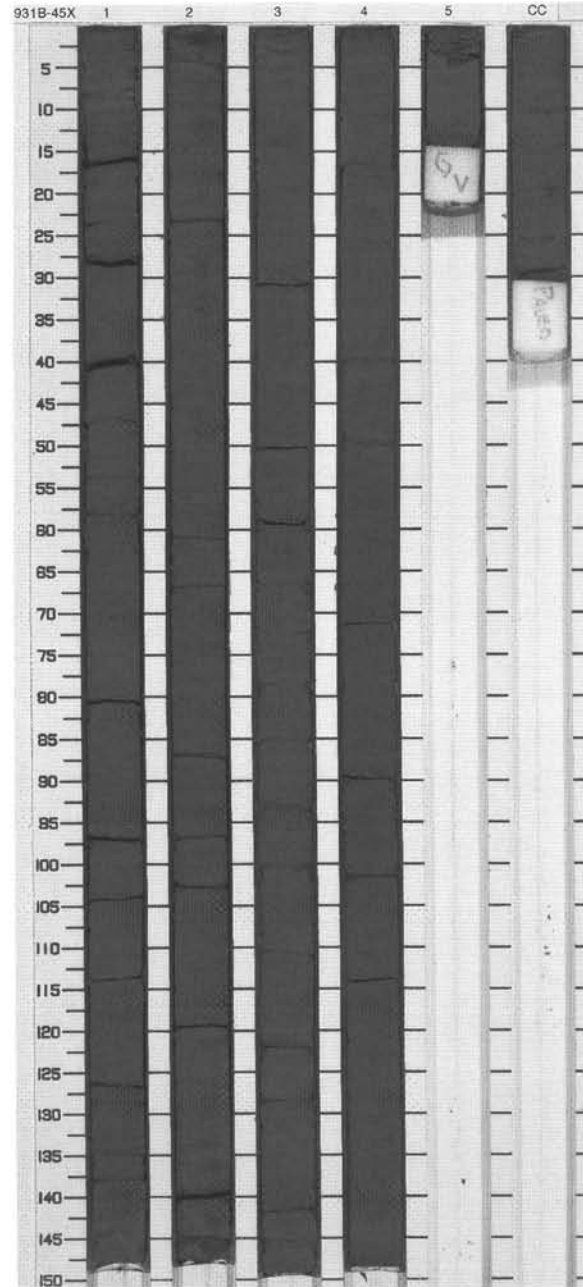
Meter	Graphic Lith.	Section	Age	Structure	Disturb	Sample	Color	Description
1	[Hatched pattern]	1		[Symbol]				<p>SILTY CLAY</p> <p>Major Lithology: This core consists of very dark gray slightly bioturbated silty clay. Silt laminae are found throughout the core.</p> <p>General Description: The sedimentary structure of Section 8 was destroyed during core recovery.</p>
2	[Hatched pattern]	2		[Symbol]				
3	[Hatched pattern]	3		[Symbol]				
4	[Hatched pattern]	4		[Symbol]				
5	[Hatched pattern]	5	middle Pleistocene	[Symbol]			5Y 3/1	
6	[Hatched pattern]	6		[Symbol]				
7	[Hatched pattern]	7		[Symbol]		I		
8	[Hatched pattern]	8		[Symbol]	[X pattern]			
9	[Hatched pattern]	9		[Symbol]	[X pattern]			
CC	[Hatched pattern]	CC		[Symbol]		M		



SITE 931 HOLE B CORE 45X

CORED 411.6 - 421.3 mbsf

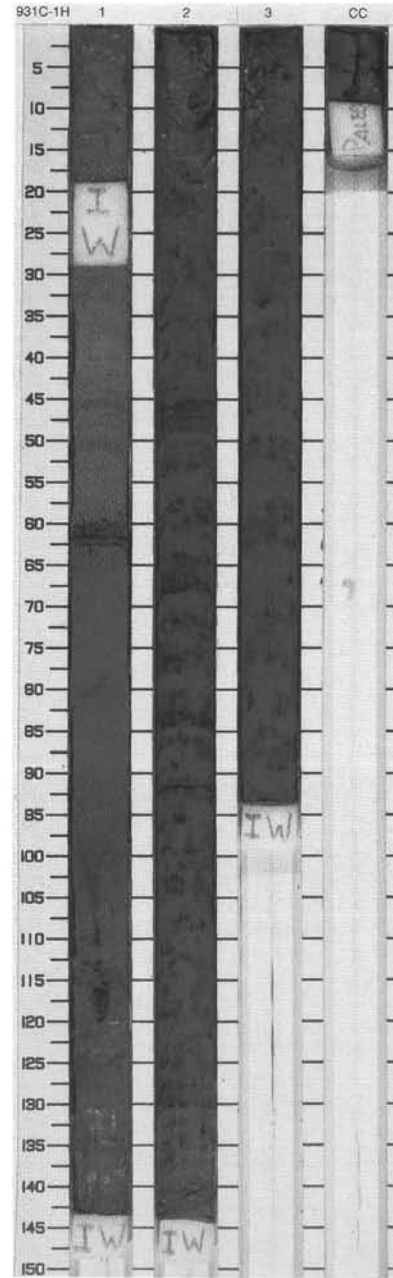
Meter	Graphic Lith.	Section	Age	Structure	Disturb	Sample	Color	Description
1		1	middle Pleistocene				5Y 4/1	SILTY CLAY AND SILT LAMINAE Major Lithology: This core consists of dark olive gray faintly color-banded (N1) silty clay alternating with numerous intervals of silt laminae.
2		2						
3		3						
4		4						
5		5						
6		CC				M		



SITE 931 HOLE C CORE 1H

CORED 0.0 - 4.1 mbsf

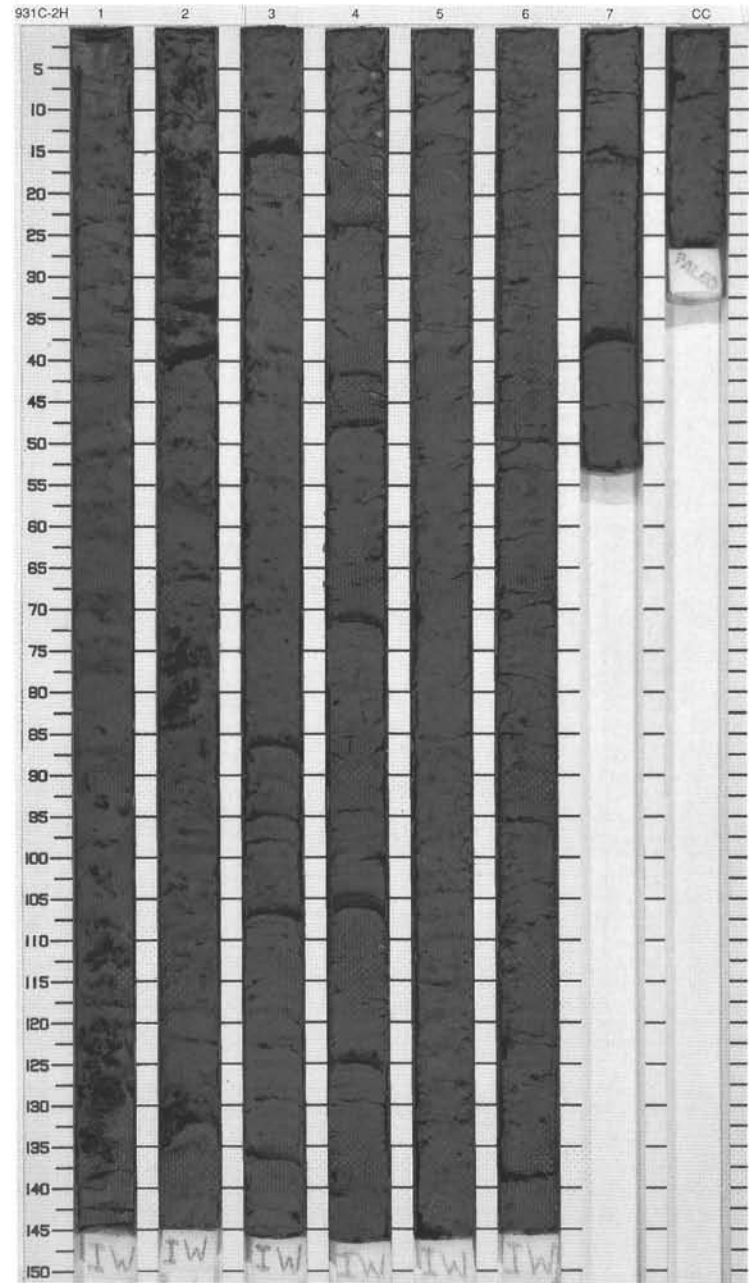
Meter	Graphic Lith.	Section	Age	Structure	Disturb	Sample	Color	Description
0.0 - 1.0	[Cross-hatched pattern]	1	late Pleistocene-Holocene	[Cloud-like symbol]		I	10YR 5/3	<p>CALCAREOUS CLAY AND CLAY</p> <p>Major Lithology: The top 63 cm of Section 1 is composed of brown calcareous clay. The calcareous consists of foraminifers and nannofossils. Below a yellowish brown indurated zone (Section 1, 60-63 cm) dark grayish brown clays dominate the sediment. The clays are faintly black mottled and slightly bioturbated. A few thin ?silt laminae exist in Section 2.</p>
1.0 - 1.5	[Dotted pattern]	1		[Cloud-like symbol]		I	2.5Y 5/2	
1.5 - 2.0	[Dotted pattern]	1		[Cloud-like symbol]		I	2.5Y 4/2	
2.0 - 3.0	[Dotted pattern]	2		[Cloud-like symbol]		I	5Y 3/2	
3.0 - 3.5	[Dotted pattern]	3		[Cloud-like symbol]		I		
3.5 - 4.1	[Dotted pattern]	CC		[Cloud-like symbol]		M		



SITE 931 HOLE C CORE 2H

CORED 4.1 - 13.6 mbsf

Meter	Graphic Lith.	Section	Age	Structure	Disturb	Sample	Color	Description
1	[Dotted pattern]	1		[Symbol]				CLAY Major Lithology: The entire core consists of dark gray clay with black color banding and mottles.
2	[Dotted pattern]	2		[Symbol]		I		
3	[Dotted pattern]	3		[Symbol]		I		
4	[Dotted pattern]	3		[Symbol]				
5	[Dotted pattern]	4	late Pleistocene	[Symbol]			5Y 4/1	
6	[Dotted pattern]	5		[Symbol]		I		
7	[Dotted pattern]	6		[Symbol]				
8	[Dotted pattern]	7		[Symbol]		I		
9	[Dotted pattern]	7		[Symbol]				
	[Dotted pattern]	CC		[Symbol]		M		



SITE 931 HOLE C CORE 3H

CORED 13.6 - 23.1 mbsf

Meter	Graphic Lith.	Section	Age	Structure	Disturb	Sample	Color	Description
1	[Dotted pattern]	1		[Symbol]				CLAY Major Lithology: Very dark gray clay is the dominant lithology in this core.
2	[Dotted pattern]	2		[Symbol]		I		
3	[Dotted pattern]	3		[Symbol]		I		
4	[Dotted pattern]	4		[Symbol]		I		
5	[Dotted pattern]	4	late Pleistocene	[Symbol]			5Y 3/1	
6	[Dotted pattern]	5		[Symbol]				
7	[Dotted pattern]	6		[Symbol]				
8	[Dotted pattern]	7		[Symbol]				
9	[Dotted pattern]	7		[Symbol]				
10	[Dotted pattern]	7		[Symbol]				
	CC							
						M		

