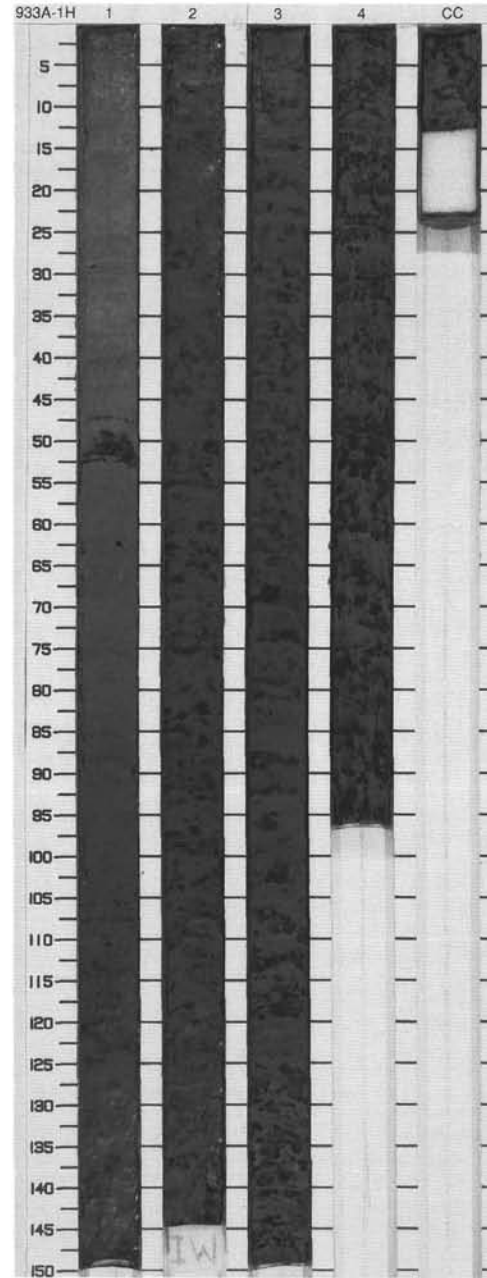


SITE 933 HOLE A CORE 1H

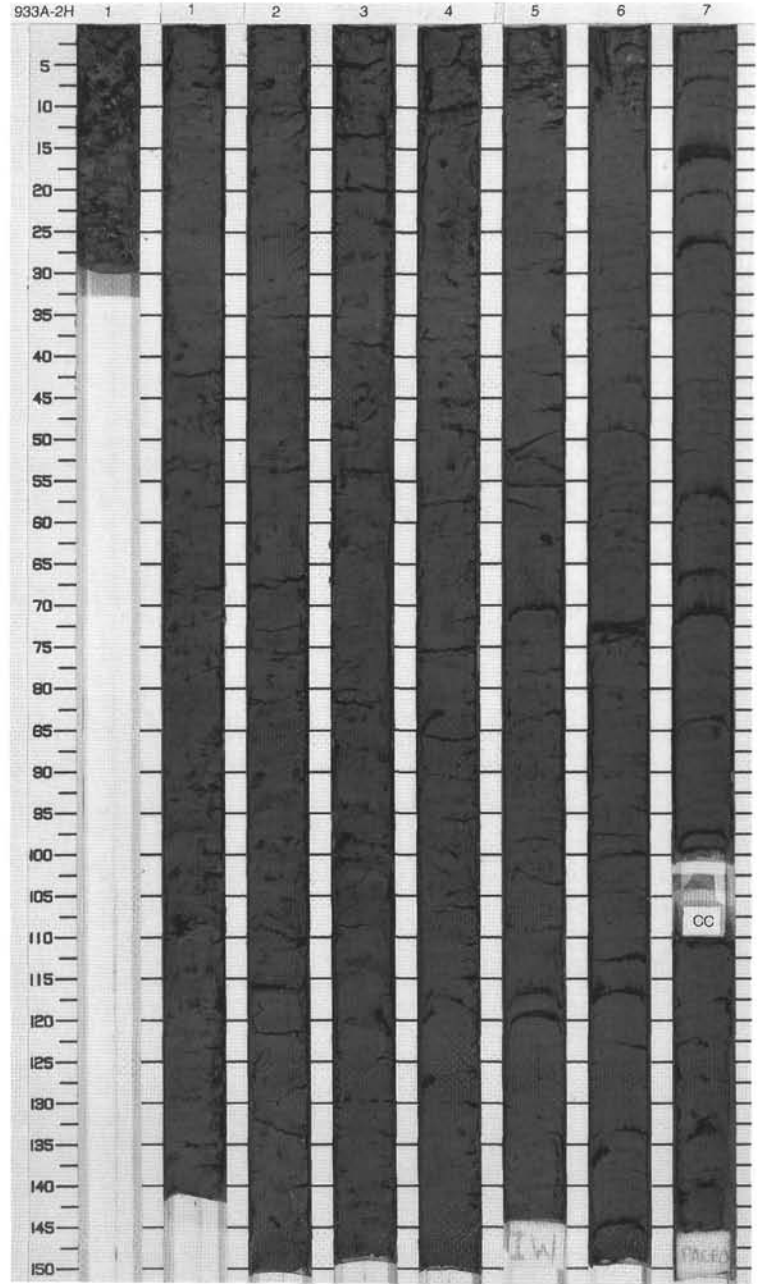
CORED 0.0 - 5.7 mbsf

Meter	Graphic Lith.	Section	Age	Structure	Disturb	Sample	Color	Description
1	[Pattern]	1	Holocene	☺			10YR 5/3	<p>CALCAREOUS CLAY and CLAY</p> <p>Major Lithologies: The top 52 cm of Section 1 is composed of brown calcareous clay. Foraminifers and nannofossils dominate the calcareous component. A distinctive 4-cm-thick indurated dark reddish brown (5YR 4/3) interval occurs in Section 1, 48-52 cm. Below this interval to the bottom of the core, the sediment consists of olive gray clay.</p>
2	[Pattern]	2	late Pleistocene	☺			5Y 4/2 To N1	
3	[Pattern]	3		☺	I		5Y 4/1	
4	[Pattern]	4		☺				
5	[Pattern]	CC		☺		M		



SITE 933 HOLE A CORE 2H CORED 5.7 - 15.2 mbsf

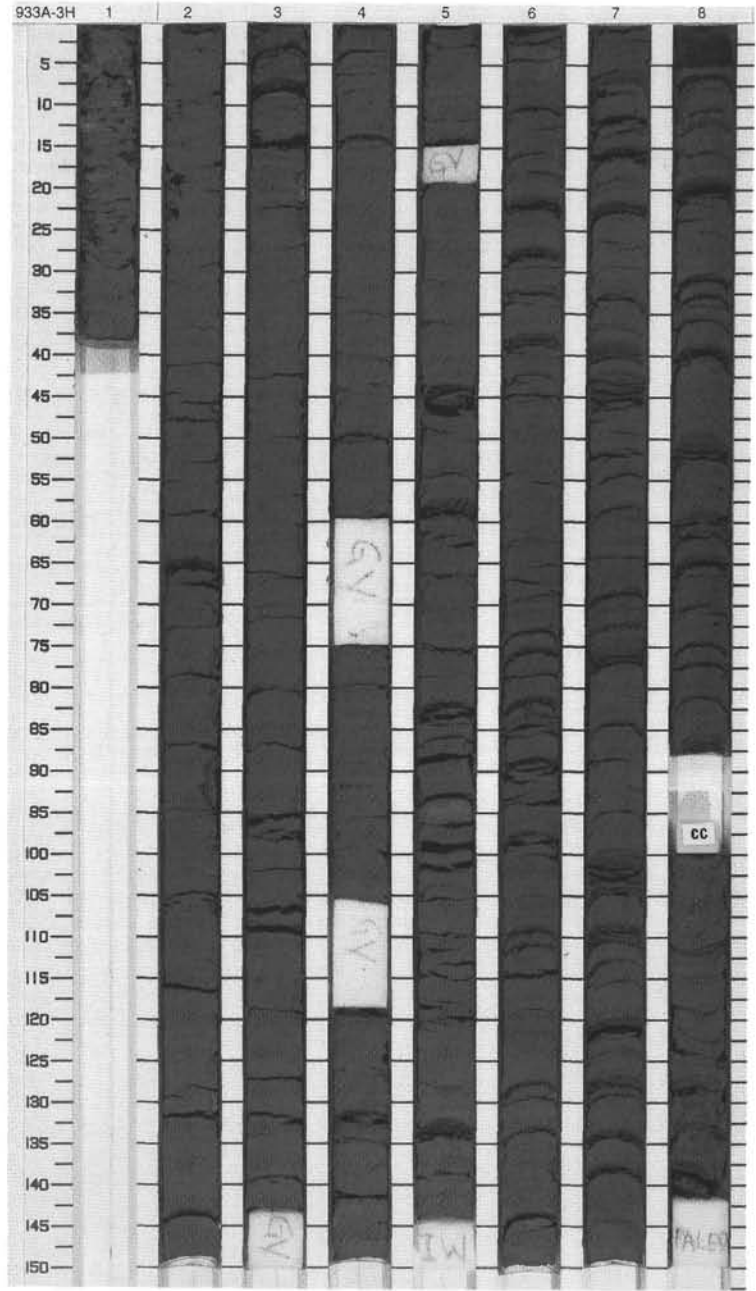
Meter	Graphic Lith.	Section	Age	Structure	Disturb	Sample	Color	Description
1	[Dotted pattern]	1		☼ ☼				<p>CLAY</p> <p>Major Lithology: The sediment is dark olive gray to black clay. The clay is bioturbated and black mottled or faintly color banded. Iron monosulfide is disseminated throughout the core and also forms centimeter-thick nodules (Section 5, 62 cm). Below 72 cm in Section 5 several silt laminae occur down to the bottom of the core.</p>
2	[Dotted pattern]	2		☼ ☼ ☼				
3	[Dotted pattern]	3		☼ ☼ ☼				
4	[Dotted pattern]	3		☼ ☼ ☼				
5	[Dotted pattern]	4	late Pleistocene	☼ ☼ ☼			5Y 3/2 To N1	
6	[Dotted pattern]	4		☼ ☼ ☼				
7	[Dotted pattern]	5		☼ ☼ ☼				
8	[Dotted pattern]	6		☼ ☼ ☼				
9	[Dotted pattern]	7		☼ ☼ ☼				
10	[Dotted pattern]	7		☼ ☼ ☼				
CC				☼				
						M		



SITE 933 HOLE A CORE 3H

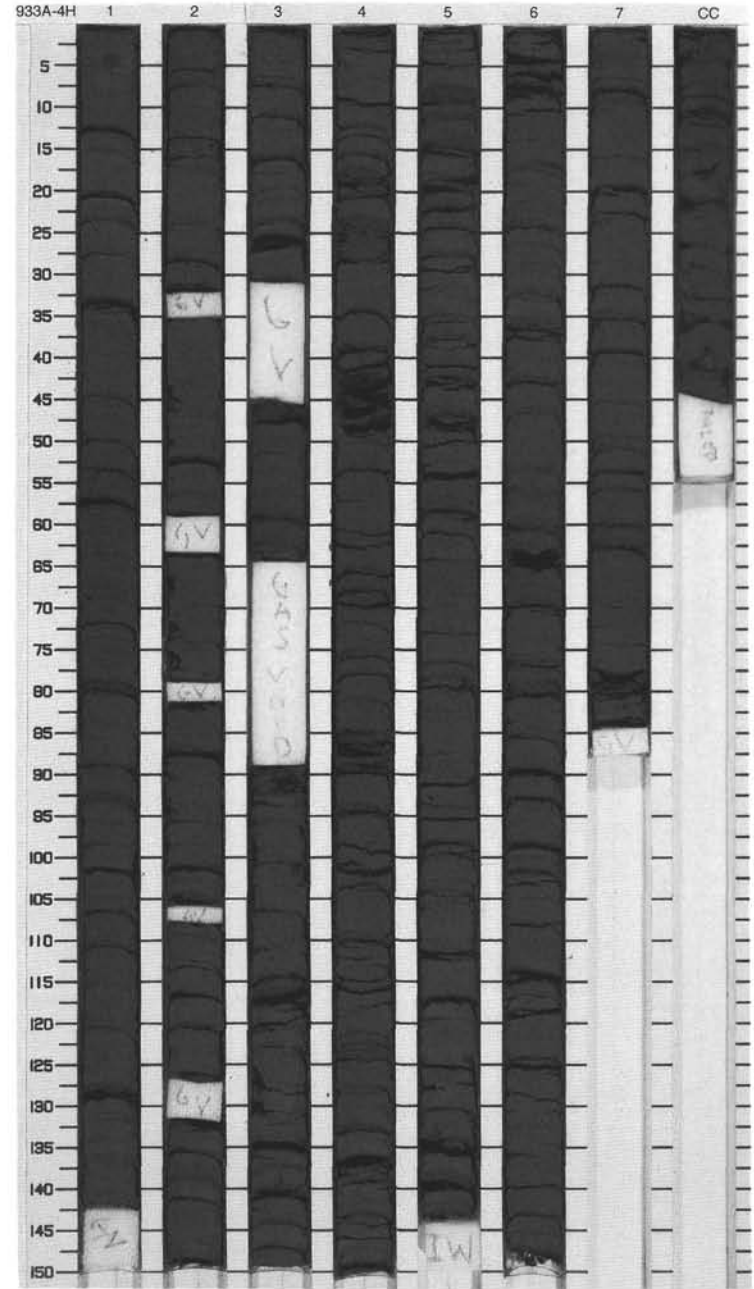
CORED 15.2 - 24.7 mbsf

Meter	Graphic Lith.	Section	Age	Structure	Disturb	Sample	Color	Description
0		1		☼	oo			CLAY, SILTY CLAY, and SILTY CLAY INTERCALATED WITH SILT/SAND LAMINAE AND BEDS
1		2						Major Lithologies: The lithology changes from very dark olive gray clay in Section 1 to silty clay. the silty clay contains several individual silt laminae in Sections 2 to 5. Beginning in Section 5, 135 cm, the content of silt laminae and their grain size increases downcore, resulting in several centimeter-thick silt/sand beds which are intercalated with the silty clay in Sections 6 to 8.
2		3		☼				
3		4						
4	Void	4		☼				
4	Void	4						
5		5	late Pleistocene	☼				
6		5				5Y 3/1		
7		6		☼				
8		6						
9		7		☼				
10		8						
		CC		☼		M		



SITE 933 HOLE A CORE 4H CORED 24.7 - 34.2 mbsf

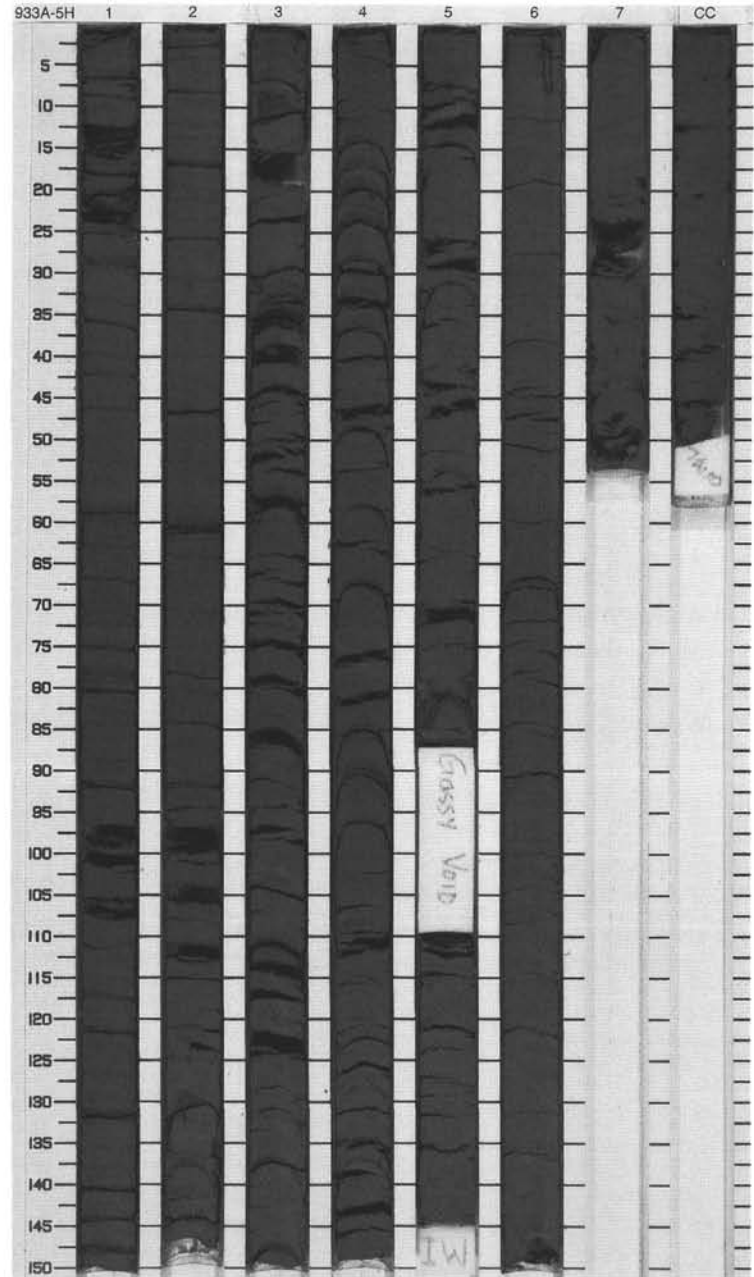
Meter	Graphic Lith.	Section	Age	Structure	Disturb	Sample	Color	Description
1	[Hatched pattern]	1		[Vertical lines]				<p>SILTY CLAY WITH SILT LAMINAE AND SILTY SAND BEDS</p> <p>Major Lithology: Very dark olive gray silty clay is the dominant sediment. Intercalated with the silty clay are sandy silt laminae and graded silt/sand beds. Laminae and silt/sand beds are often graded and display disrupted contacts with the silty clay.</p>
2	[Hatched pattern]	2		[Vertical lines]				
3	[Hatched pattern]	3		[Vertical lines]				
	Void							
	Void							
4	[Hatched pattern]	3		[Vertical lines]				
5	[Hatched pattern]	4	late Pleistocene	[Vertical lines]			5Y 3/1	
6	[Hatched pattern]	5		[Vertical lines]				
7	[Hatched pattern]	6		[Vertical lines]				
8	[Hatched pattern]	7		[Vertical lines]				
9	[Hatched pattern]	7		[Vertical lines]				
10	[Hatched pattern]	CC		[Vertical lines]				
								M



SITE 933 HOLE A CORE 5H

CORED 34.2 - 43.7 mbsf

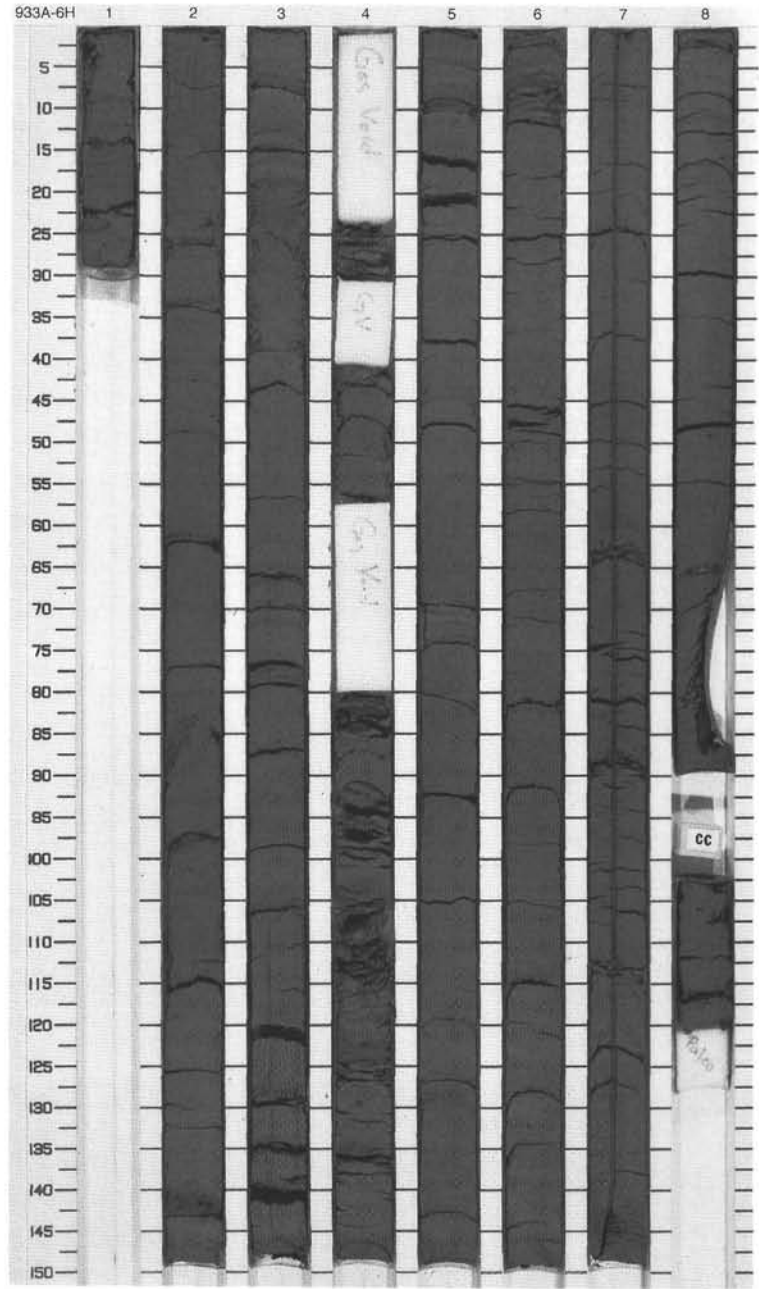
Meter	Graphic Lith.	Section	Age	Structure	Disturb	Sample	Color	Description
1	[Hatched pattern]	1		***				<p>SILTY CLAY WITH SILT LAMINAE AND SILTY SAND BEDS</p> <p>Major Lithology: Silt laminae and silty sand beds, often graded, occur intercalated with very dark gray silty clay. Contacts between sand beds and clay are apparently disturbed by gas partings.</p>
2	[Hatched pattern]	2		***				
3	[Hatched pattern]	3		***				
4	[Hatched pattern]	3		***				
5	[Hatched pattern]	4	late Pleistocene	***			5Y 3/1	
6	[Hatched pattern]	5		***				
7	Void							
8	[Hatched pattern]	6		***				
9	[Hatched pattern]	7		***				
10	[Hatched pattern]	CC		***			M	



SITE 933 HOLE A CORE 6H

CORED 43.7 - 53.2 mbsf

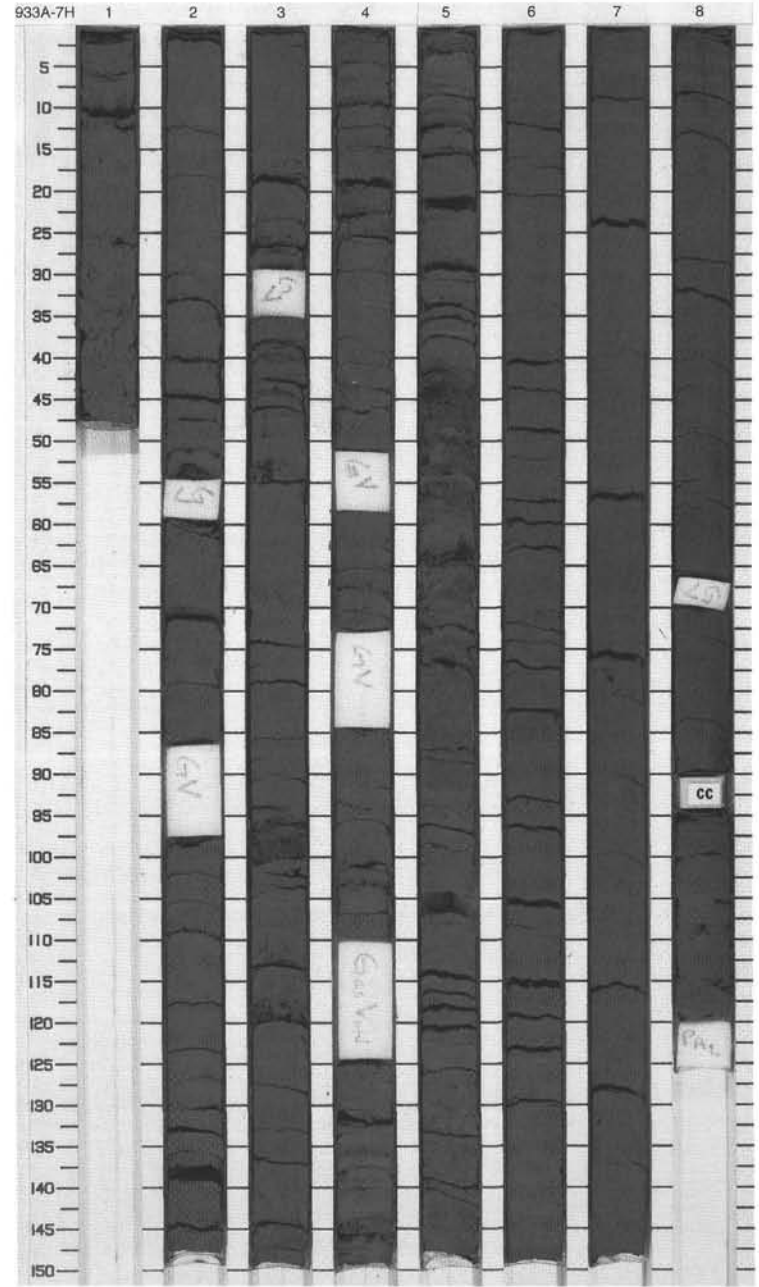
Meter	Graphic Lith.	Section	Age	Structure	Disturb	Sample	Color	Description
0		1			W			<p>SILTY CLAY WITH SILT LAMINAE AND SILTY SAND BEDS</p> <p>Major Lithology: Silty laminae and graded silty sand beds are intercalated in dark gray silty clays. The silty sand beds show distorted and convoluted bedding. Contacts between the sand beds and silty clay are disturbed by gas partings.</p>
1		2						
2		3						
3		4						
4	Void							
5	Void							
6		5	late Pleistocene				5Y 3/1	
7		6						
8		7						
9		8						
10		CC			WWW	M		



SITE 933 HOLE A CORE 7H

CORED 53.2 - 62.7 mbsf

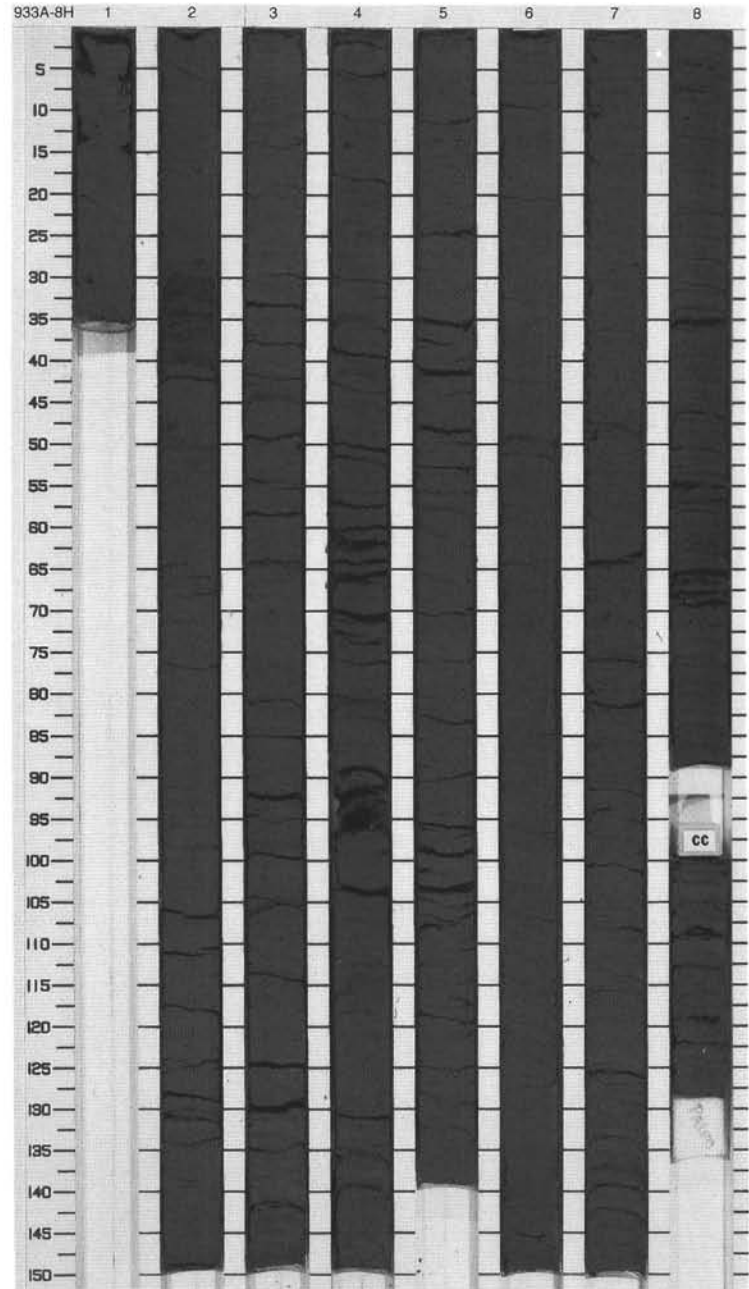
Meter	Graphic Lith.	Section	Age	Structure	Disturb	Sample	Color	Description
1	[Symbol]	1		[Symbol]				<p>SILTY CLAY WITH SILT LAMINAE AND SAND BEDS and CLAY</p> <p>Major Lithologies: Sections 1 throughout 5, 140 cm, contain a dark gray silty clay intercalated with silt laminae and graded sand beds. The number of laminae and thickness of sand beds increase downcore to a thick sand bed (Section 5, 41-60 cm). Below this interval, the silty clay gradates to a black structureless clay (Section 5, 140 cm) that contains wood and shell fragments.</p>
2	[Symbol]	2		[Symbol]				
3	[Symbol]	3		[Symbol]			5Y 3/1	
4	[Symbol]	4		[Symbol]				
5	[Symbol]	5	late Pleistocene	[Symbol]				
6	[Symbol]	5		[Symbol]			N2 To 5Y 3/2	
7	[Symbol]	6		[Symbol]	S			
8	[Symbol]	7		[Symbol]			N2 To 5Y 2.5/1	
9	[Symbol]	7		[Symbol]				
10	[Symbol]	8		[Symbol]				
	CC						M	



SITE 933 HOLE A CORE 8H

CORED 62.7 - 72.2 mbsf

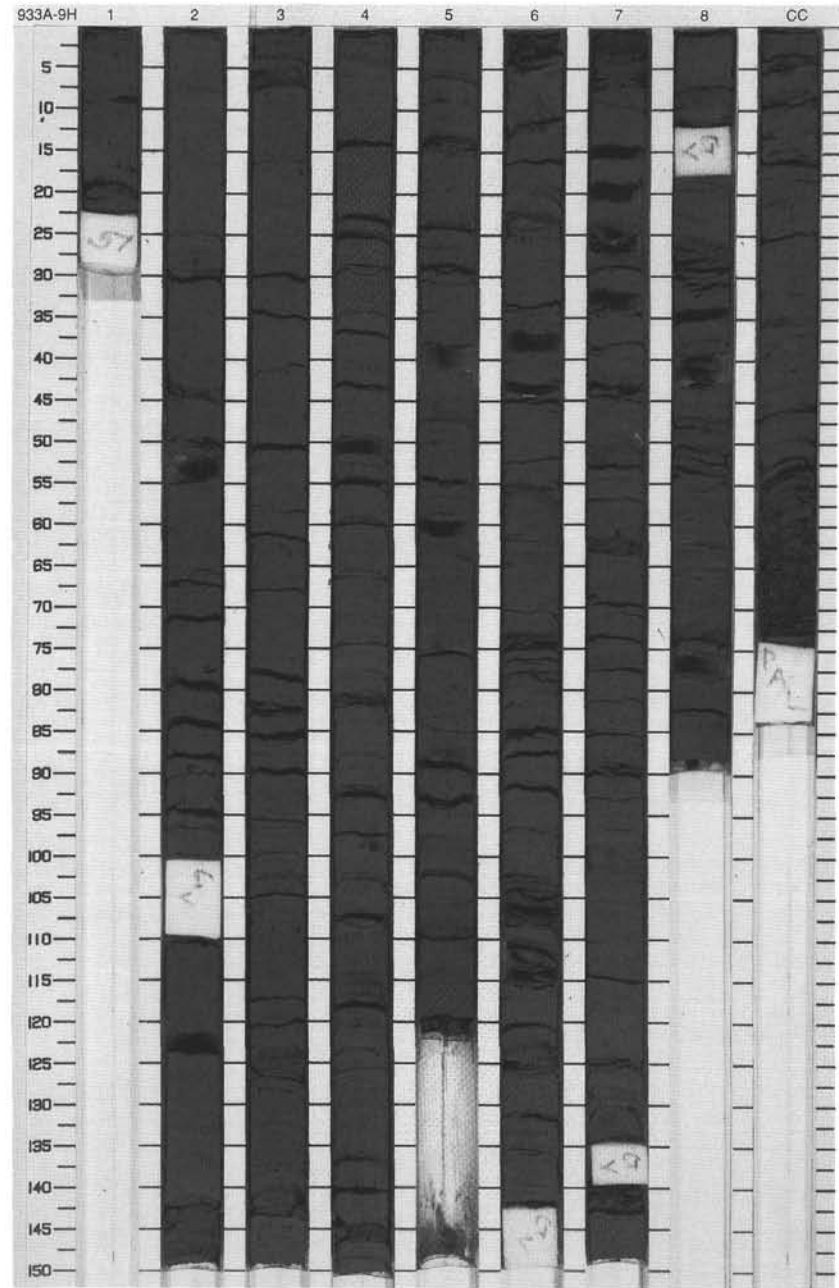
Meter	Graphic Lith.	Section	Age	Structure	Disturb	Sample	Color	Description
1		1		↑ ◇			N2	CLAY AND SILTY CLAY Major Lithology: Section 1 and the top 48 cm of Section 2 consist of black clay containing wood fragments and isolated pebble clasts. From 48 cm in Section 2 to the base the core, faintly mottled and color-banded silty clay with silt laminae is the dominant lithology.
2		2						
3		3						
4		4						
5		5	late Pleistocene					
6		6		☼ 			5Y 3/2	
7		7		☼ 				
8		8		☼ 				
9				☼ 				
10				☼ 				
		CC				M		



SITE 933 HOLE A CORE 9H

CORED 72.2 - 81.7 mbsf

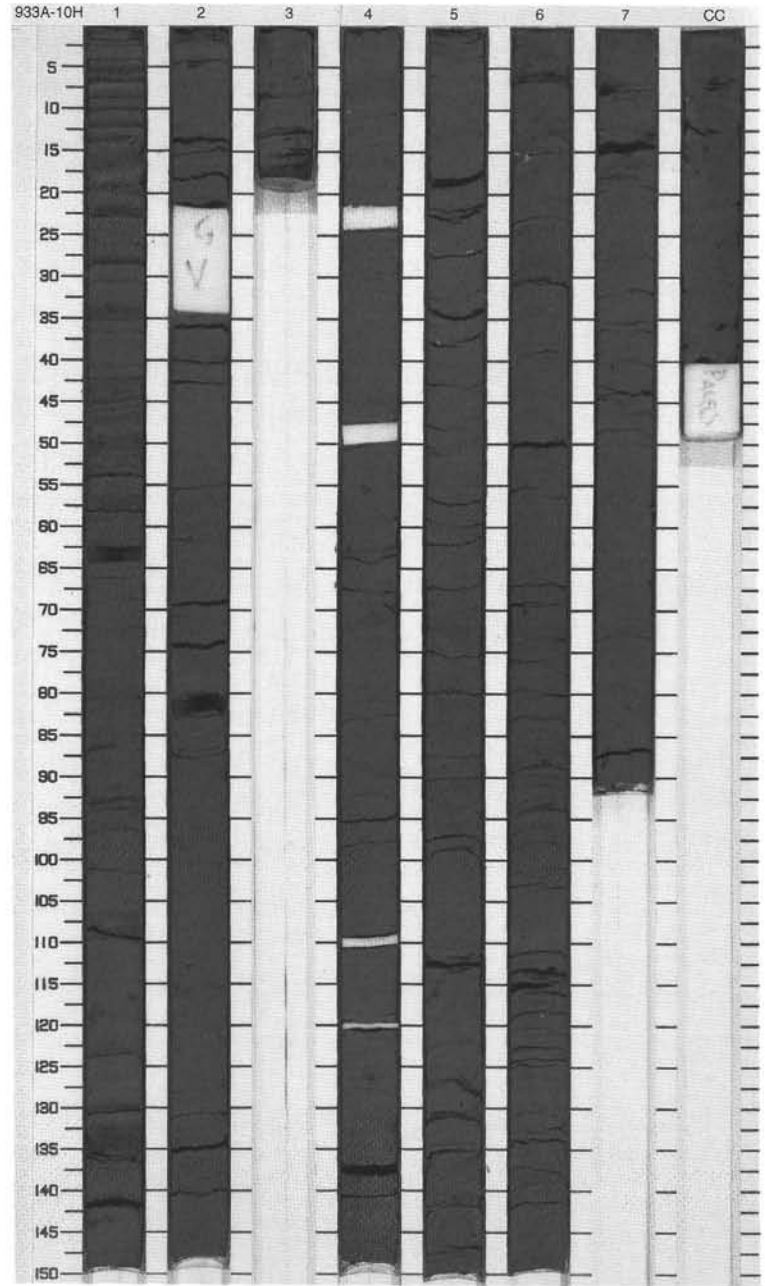
Meter	Graphic Lith.	Section	Age	Structure	Disturb	Sample	Color	Description
1	[Symbol]	1		[Symbol]				<p>SILTY CLAY AND SILT LAMINAE</p> <p>Major Lithology: This core consists of silty clay. Section 1 through 100 cm in Section 3 consists of faintly mottled and moderately bioturbated silty clay. From 100 cm in Section 3 to the base of the core, frequent thin silt and very fine sand beds occur.</p>
2	[Symbol]	2		[Symbol]				
3	[Symbol]	3		[Symbol]				
4	[Symbol]	4		[Symbol]				
5	[Symbol]	5	late Pleistocene	[Symbol]				
6	[Symbol]	6		[Symbol]		5Y 3/2		
7	[Symbol]	7		[Symbol]				
8	[Symbol]	8		[Symbol]				
9	[Symbol]	9		[Symbol]				
10	[Symbol]	10		[Symbol]				
		CC		[Symbol]				
				[Symbol]		M		



SITE 933 HOLE A CORE 10H

CORED 81.7 - 91.2 mbsf

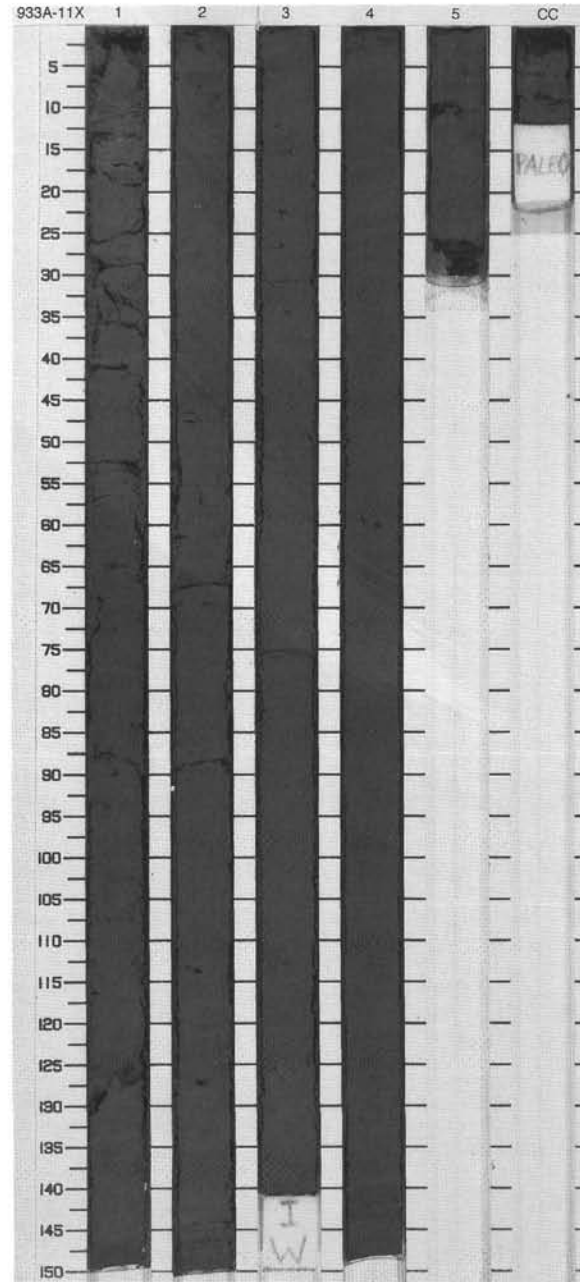
Meter	Graphic Lith.	Section	Age	Structure	Disturb	Sample	Color	Description
1	[Dotted pattern]	1		[Horizontal lines]				<p>SILTY CLAY WITH SILT/SAND LAMINAE</p> <p>Major Lithology: This core consists of silty clay. Sections 1, 5, and 6 contain numerous silt and fine sand laminae.</p>
2	[Dotted pattern]	2		[Wavy lines]				
3	[Dotted pattern]	3		[Wavy lines]				
4	[Dotted pattern]	4	late Pleistocene	[Wavy lines]				
5	[Dotted pattern]	5		[Wavy lines]			5Y 3/2	
6	[Dotted pattern]	6		[Wavy lines]				
7	[Dotted pattern]	7		[Wavy lines]				
8	[Dotted pattern]	7		[Wavy lines]				
9	[Dotted pattern]	CC		[Wavy lines]			M	



SITE 933 HOLE A CORE 11X

CORED 91.2 - 99.8 mbsf

Meter	Graphic Lith.	Section	Age	Structure	Disturb	Sample	Color	Description
1	[Hatched pattern]	1	late Pleistocene	[Symbol]			5Y 4/1	SILTY CLAY Major Lithology: The entire core consists of very dark gray silty clay.
2	[Hatched pattern]	2		[Symbol]				
3	[Hatched pattern]	3		[Symbol]				
4	[Hatched pattern]	4		[Symbol]		I		
5	[Hatched pattern]	5		[Symbol]		S		
6	[Hatched pattern]	CC		[Symbol]		M		

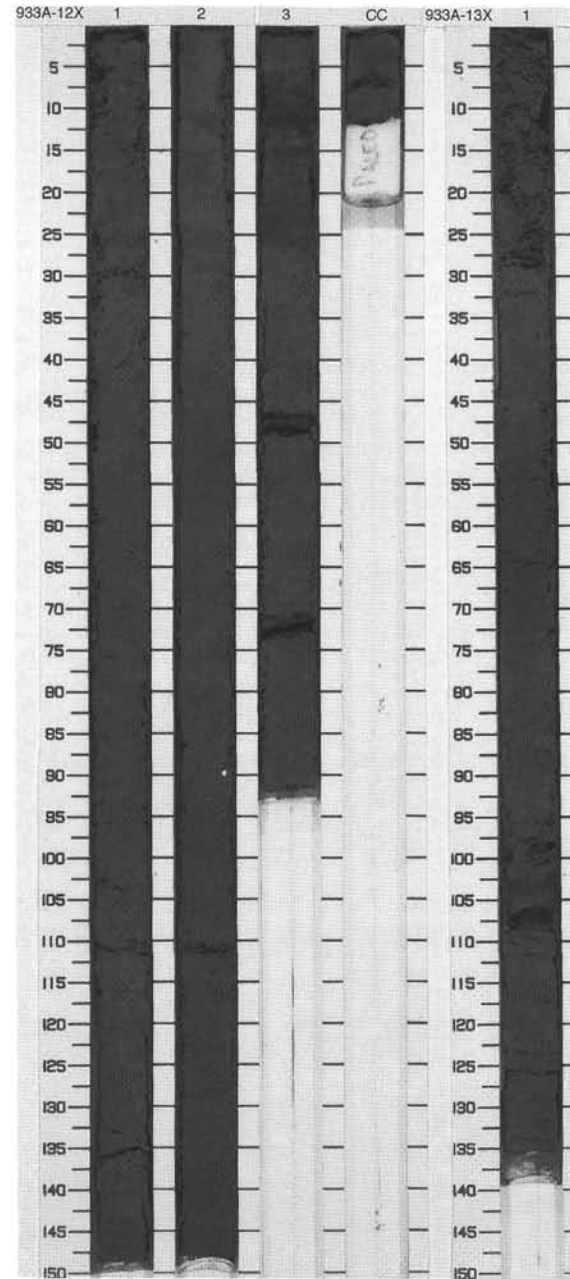


SITE 933 HOLE A CORE 12X CORED 99.8 - 109.4 mbsf

Meter	Graphic Lith.	Section	Age	Structure	Disturb	Sample	Color	Description
1		1	late Pleistocene	○	-	S	5Y 3/1	SILTY CLAY Major Lithology: This core consists of silty clay. The interval 0-26 cm in Section 3 contains black silty clay and a ?mud clast.
2		2						
3		3						
4		CC						

SITE 933 HOLE A CORE 13X CORED 109.4 - 119.0 mbsf

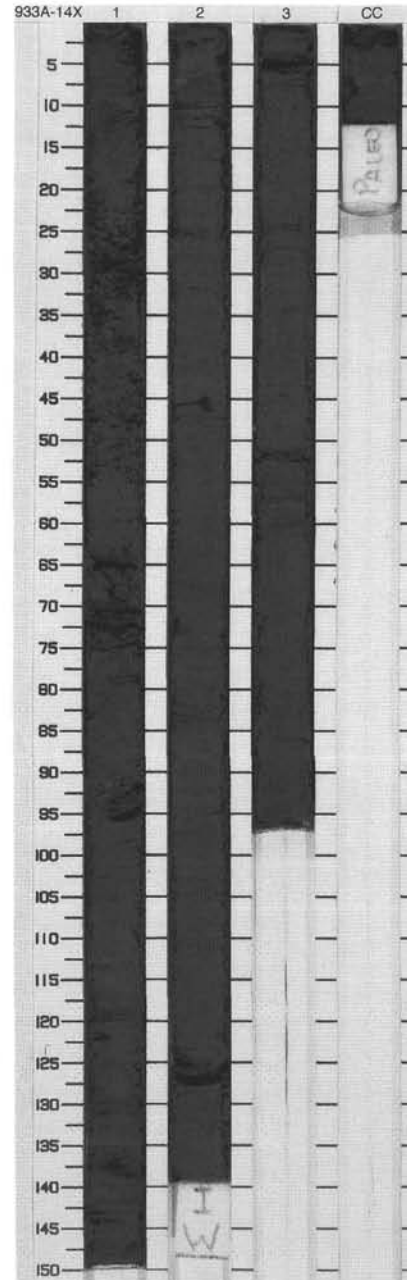
Meter	Graphic Lith.	Section	Age	Structure	Disturb	Sample	Color	Description
1		1	late Pleistocene		○	M	5Y 3/1	SILTY CLAY Major Lithology: The sediment consists of very dark and structureless silty clay.
		CC						



SITE 933 HOLE A CORE 14X

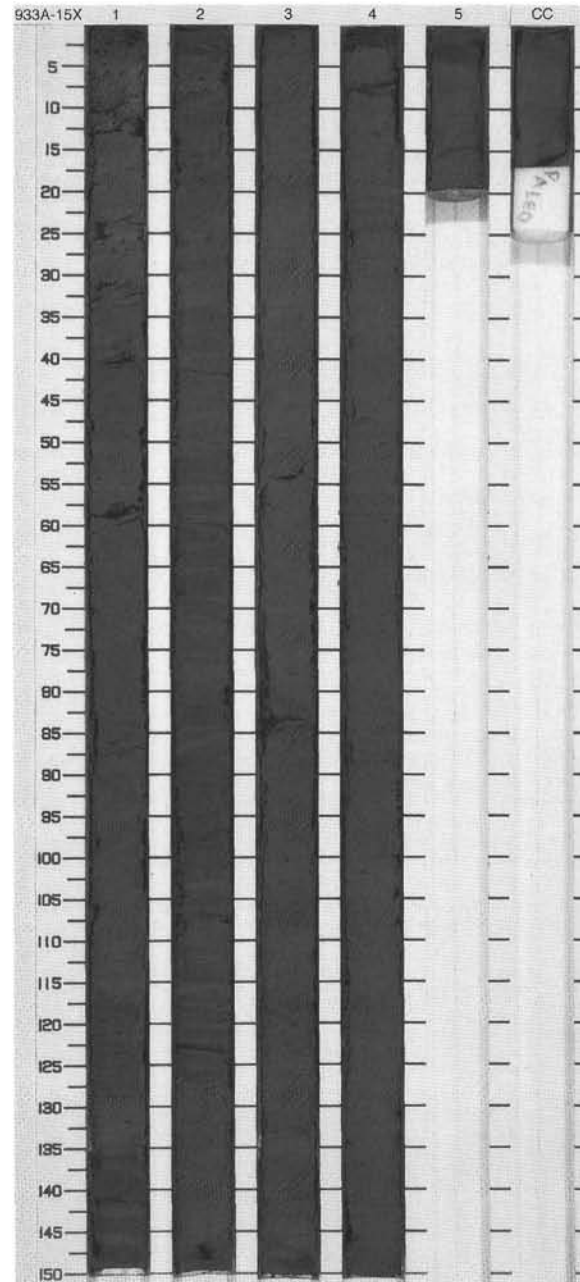
CORED 119.0 - 128.7 mbsf

Meter	Graphic Lith.	Section	Age	Structure	Disturb	Sample	Color	Description
1	[Graphic Lithology]	1	late Pleistocene	2	OOOOOOOO		5Y 3/1	<p>SILTY CLAY</p> <p>Major Lithology: The sediment consists of very dark gray clay. Silt-enriched intervals are found in Section 1, 80-90 and 130-150 cm; Section 2, 65-70 and 104-140 cm; and Section 3, 70-97 cm. Variations in gray color attenuate contorted bedding.</p>
2	[Graphic Lithology]	2		2				
3	[Graphic Lithology]	3		2	I			
4	[Graphic Lithology]	CC				M		



SITE 933 HOLE A CORE 15X CORED 128.7 - 138.3 mbsf

Meter	Graphic Lith.	Section	Age	Structure	Disturb	Sample	Color	Description
1	[Hatched pattern]	1	late Pleistocene	2 III	⊖		5Y 3/1	SILTY CLAY Major Lithology: Variegated dark gray-colored silty clay occurs throughout the core. The intervals from Section 1, 30 cm, to Section 2, 123 cm, and from Section 3, 82 cm, to Section 5, 2 cm, are faintly color banded, attenuating contorted and folded bedding of clays in these intervals.
2	[Hatched pattern]	2		2 III			5Y 3/1 To 5Y 4/1	
3	[Hatched pattern]	3		2 III			5Y 4/1	
4	[Hatched pattern]	4		2 III			5Y 3/1	
5	[Hatched pattern]	5		2 III			5Y 4/1 To 5Y 3/2	
6	[Hatched pattern]	5	2 III			5Y 3/1		
		CC				M		



SITE 933 HOLE A CORE 16X

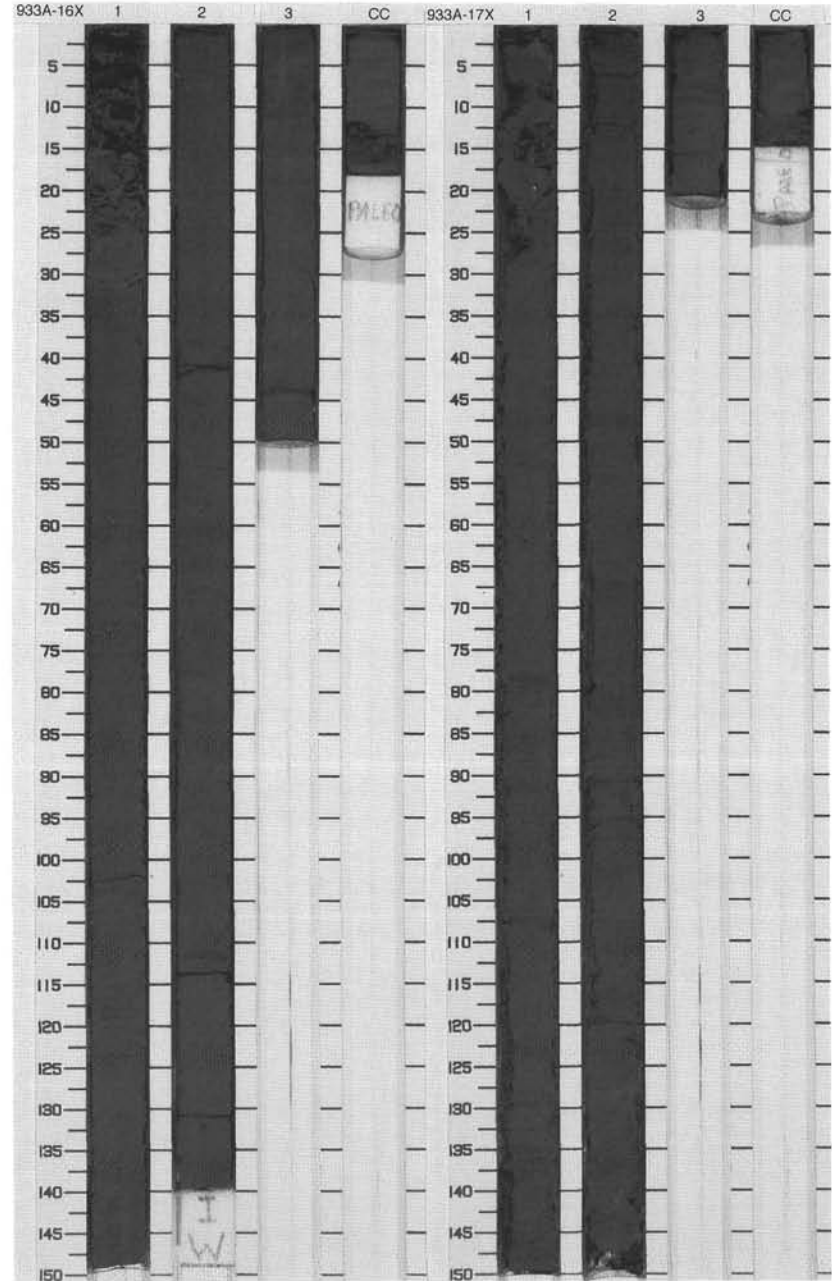
CORED 138.3 - 147.9 mbsf

Meter	Graphic Lith.	Section	Age	Structure	Disturb	Sample	Color	Description
1	[Hatched pattern]	1	late Pleistocene					SILT-RICH SILTY CLAY Major Lithology: The whole core consists of a silt-rich, very dark gray silty clay. A few individual silt laminae are scattered through the core.
2	[Hatched pattern]	2					5Y 3/1	
3	[Hatched pattern]	3				I		
		CC				M		

SITE 933 HOLE A CORE 17X

CORED 147.9 - 157.6 mbsf

Meter	Graphic Lith.	Section	Age	Structure	Disturb	Sample	Color	Description	
1	[Hatched pattern]	1	late Pleistocene	2 - -				SILTY CLAY Major Lithology: Silt-rich dark gray structureless silty clay (Section 1, 10-79 cm, and Section 2, 95-110 cm) is interbedded with a variegated dark gray silty clay. Gray color variation in the latter indicates contorted bedding of silty clay.	
2	[Hatched pattern]	2		2					5Y 3/1
3	[Hatched pattern]	3		2					
		CC				M			



SITE 933 HOLE A CORE 18X

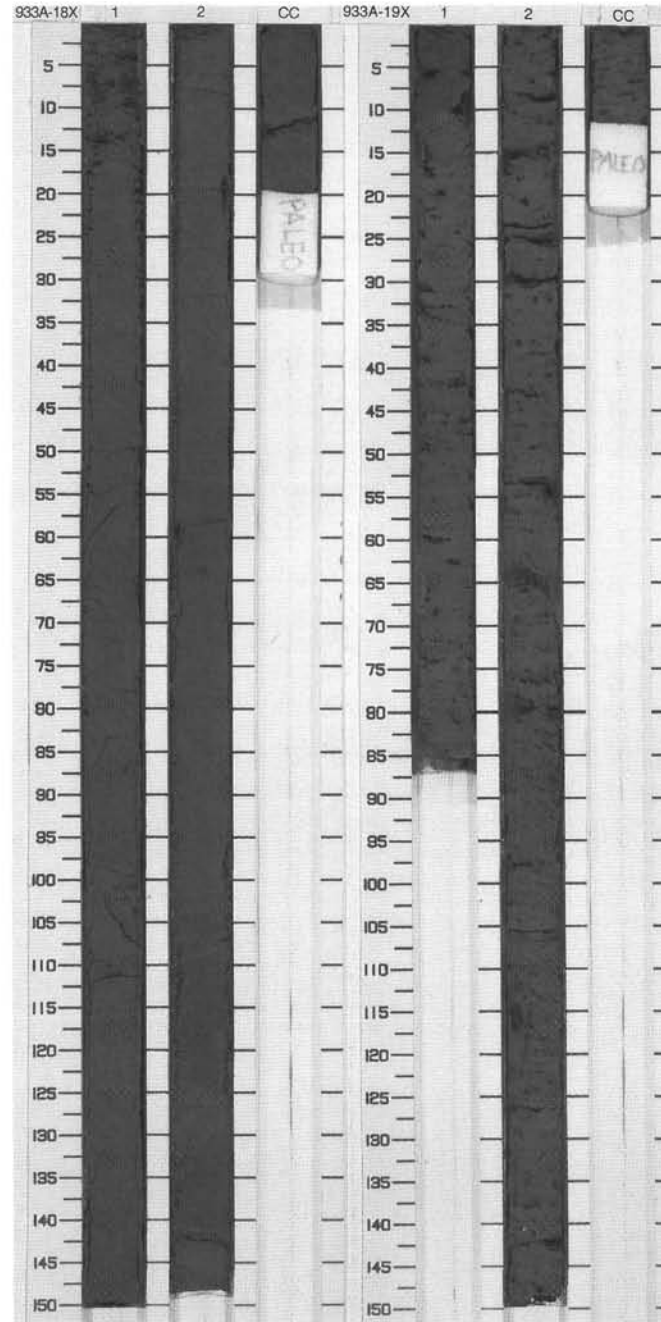
CORED 157.6 - 167.2 mbsf

Meter	Graphic Lith.	Section	Age	Structure	Disturb	Sample	Color	Description
1		1	late Pleistocene		○		5Y 4/1	SILTY CLAY Major Lithology: Variegated dark gray silty clays are found from the top of the core through to Section 2, 104 cm. Gray color variation highlights contorted bedding of clays. Below the sequence of heavy deformed silty clays, a very dark gray structureless silty clay follows to the bottom of the core.
2		2		---			5Y 2.5/1	
3		CC		M				

SITE 933 HOLE A CORE 19X

CORED 167.2 - 176.9 mbsf

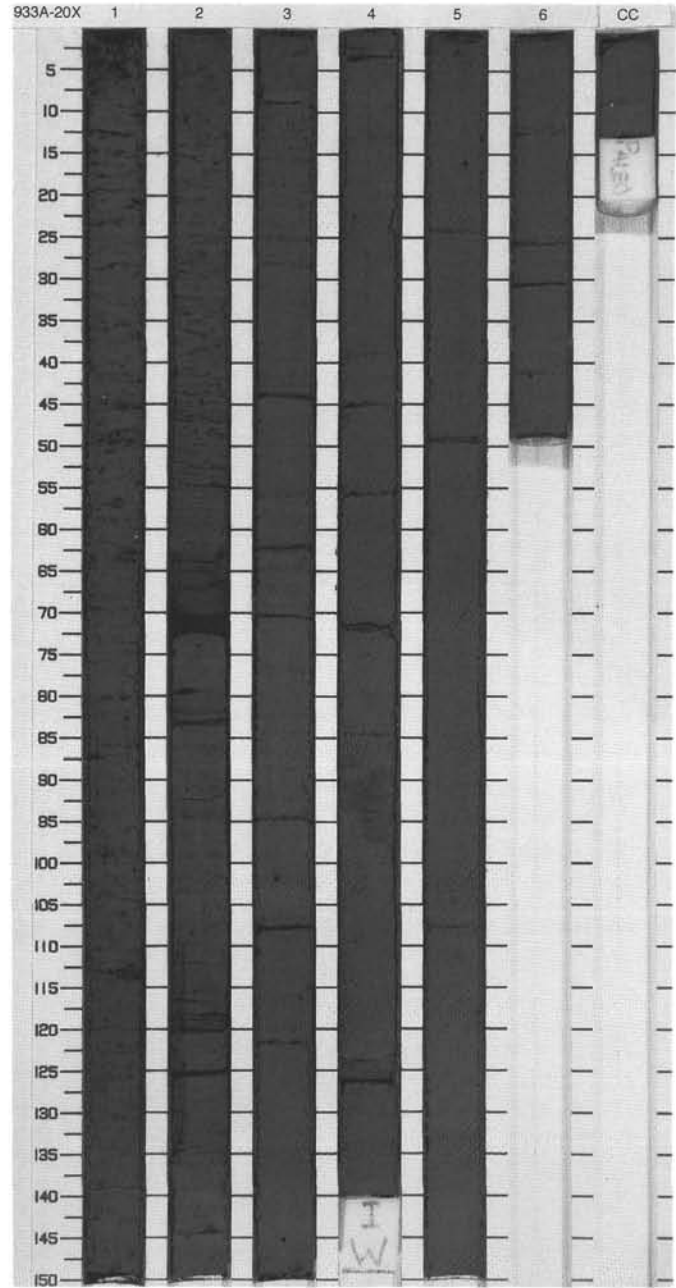
Meter	Graphic Lith.	Section	Age	Structure	Disturb	Sample	Color	Description
1		1	middle Pleistocene		○	S	5Y 3/1	SILTY CLAY and CLAY Major Lithologies: The upper 11 cm of this core contains a dark gray contorted bedded silty clay. Below an angular contact at 11 cm (Section 1) the sediment consists of very dark gray clay, which is black mottled due to bioturbation and disseminated iron monosulfide.
2		2					M	
	CC							



SITE 933 HOLE A CORE 20X

CORED 176.9 - 186.5 mbsf

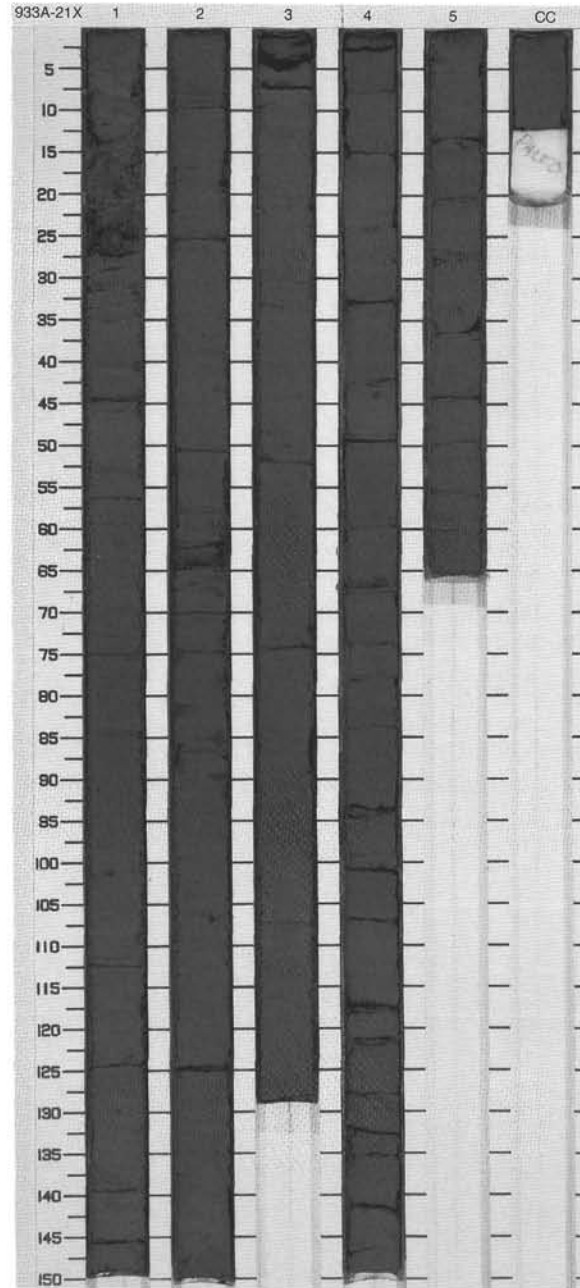
Meter	Graphic Lith.	Section	Age	Structure	Disturb	Sample	Color	Description
1	[Dotted pattern]	1		☼		S	5Y 4/1	<p>CLAY AND SILTY CLAY WITH SILT LAMINAE</p> <p>Major Lithology: From the top of Section 1 throughout Section 2, 63 cm, the core consists of dark gray, bioturbated and black mottled, clay. Below a 15-cm-thick silt bed (Section 2, 63-78 cm), there is a gradational change to a silty clay, accompanied with the occurrence of silt laminae. Black (N/1) color banding is associated with iron monosulfide concentrated in silt laminae.</p>
2	[Dotted pattern]	2		☼		S	5Y 4/1 To N1	
3	[Dotted pattern]	3		☼		S	5Y 4/1	
4	[Dotted pattern]	3	middle Pleistocene	☼		S		
5	[Dotted pattern]	4		☼		S		
6	[Dotted pattern]	4		☼		I	5Y 3/1	
7	[Dotted pattern]	5		☼		S		
8	[Dotted pattern]	6		☼		S		
	[Dotted pattern]	CC		☼		M		



SITE 933 HOLE A CORE 21X

CORED 186.5 - 196.2 mbsf

Meter	Graphic Lith.	Section	Age	Structure	Disturb	Sample	Color	Description
1	[Graphic Lith. Pattern]	1	middle Pleistocene	[Structure Symbols]	o	S	5Y 3/1	<p>SILTY CLAY WITH SILT LAMINAE</p> <p>Major Lithology: The core is composed of very dark gray silty clay. Individual silt laminae occur at intervals between 20 to 30 cm. Dark (5Y 2.5/1) mottling and black banding is associated with iron monosulfide disseminated in the clay and concentrated in laminae.</p>
2	[Graphic Lith. Pattern]	2		[Structure Symbols]				
3	[Graphic Lith. Pattern]	3		[Structure Symbols]				
4	[Graphic Lith. Pattern]	4		[Structure Symbols]				
5	[Graphic Lith. Pattern]	4		[Structure Symbols]				
6	[Graphic Lith. Pattern]	5		[Structure Symbols]				
	CC					M	5Y 3/2 To 5Y 2.5/1	



SITE 933 HOLE A CORE 22X

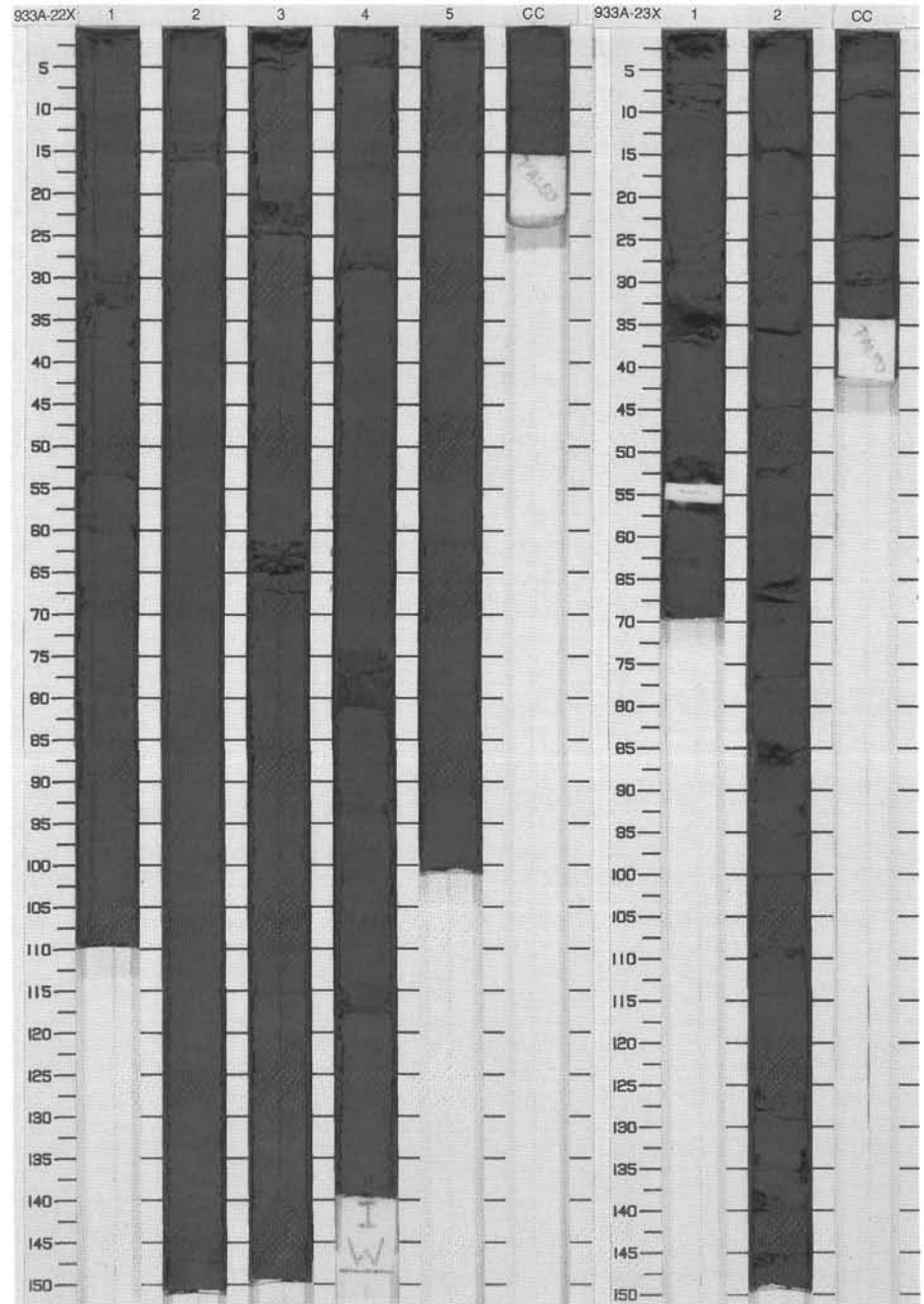
CORED 196.2 - 205.8 mbsf

Meter	Graphic Lith.	Section	Age	Structure	Disturb	Sample	Color	Description
1	[Hatched pattern]	1	middle Pleistocene	[Symbol: three horizontal lines]	S		5Y 3/1	SILTY CLAY WITH SILT LAMINAE AND SILT/SAND BEDS Major Lithology: The core contains several silt laminae and silty sand beds intercalated in very dark gray silty clays.
2	[Hatched pattern]	2		[Symbol: cloud]				
3	[Hatched pattern]	3		[Symbol: three horizontal lines]				
4	[Hatched pattern]	4		[Symbol: cloud]				
5	[Hatched pattern]	4		[Symbol: three horizontal lines]				
6	[Hatched pattern]	5	[Symbol: cloud]	I				
		CC		[Symbol: cloud]				M

SITE 933 HOLE A CORE 23X

CORED 205.8 - 215.5 mbsf

Meter	Graphic Lith.	Section	Age	Structure	Disturb	Sample	Color	Description
1	[Hatched pattern]	1	middle Pleistocene	[Symbol: diamond]	S		5Y 3/1	SILTY CLAY WITH SILT LAMINAE AND SILT/SAND BEDS Major Lithology: The sediment is very dark gray silty clay containing several individual silt laminae and silt/sand beds. Contacts between silts or sands and clay are distorted and irregular.
2	[Hatched pattern]	2		[Symbol: three horizontal lines]				
		CC		[Symbol: three horizontal lines]				M



SITE 933 HOLE A CORE 24X

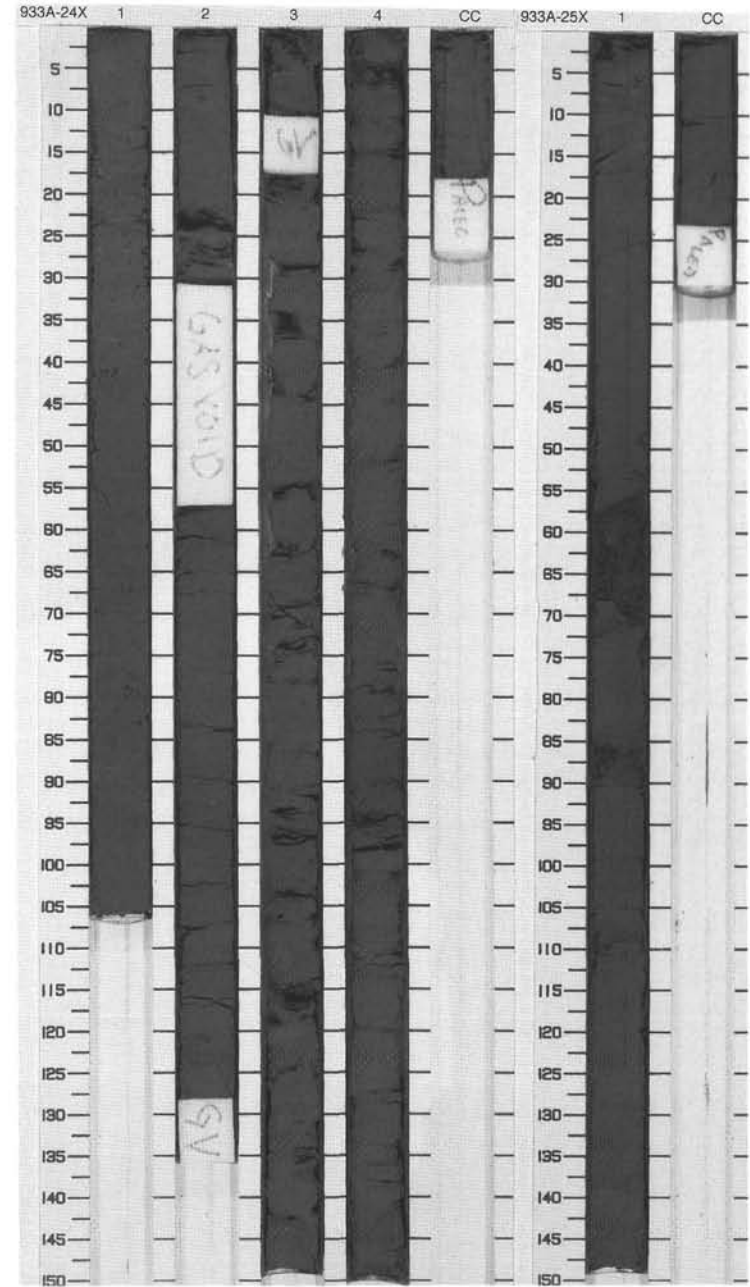
CORED 215.5 - 225.2 mbsf

Meter	Graphic Lith.	Section	Age	Structure	Disturb	Sample	Color	Description
1		1	middle Pleistocene			M	5Y 4/1	<p>SILTY CLAY WITH SILT LAMINAE AND SILT/SAND BEDS</p> <p>Major Lithology: The sediment consists of very dark gray silty clay. Several silt laminae and silty sand beds are scattered throughout the core.</p> <p>General Description: The whole sediment in this core is deformed by drilling disturbance. Sections 2 and 3 are stratigraphically disoriented.</p>
2	Void	2					5Y 3/1	
3		3						
4		4						
5		CC						

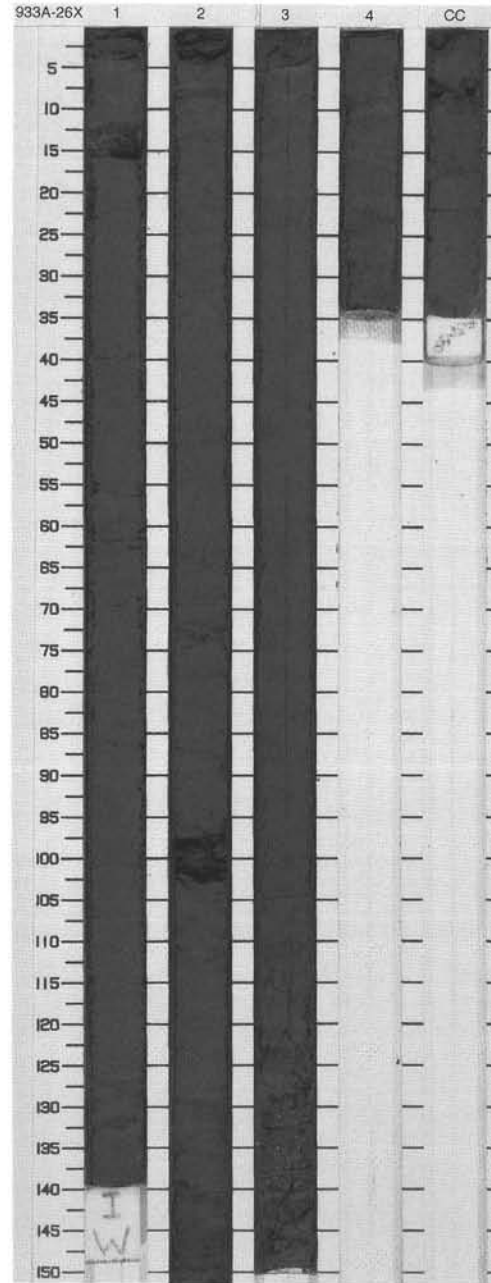
SITE 933 HOLE A CORE 25X

CORED 225.2 - 234.8 mbsf

Meter	Graphic Lith.	Section	Age	Structure	Disturb	Sample	Color	Description
1		1	middle Pleist.			M	5Y 3/1	<p>SILTY CLAY WITH SILTY SAND BEDS</p> <p>Major Lithology: The sediment is very dark gray silty clay that contains two distinct graded sand beds (Section 1, 56-71 and 83-91 cm).</p>
		CC						



Meter	Graphic Lith.	Section	Age	Structure	Disturb	Sample	Color	Description
1	[Hatched pattern]	1	middle Pleistocene	[Horizontal lines]	o	I	5Y 3/1	SILTY CLAY WITH SILT/SAND LAMINAE AND BEDS Major Lithology: The core is composed of a very dark gray clay that contains numerous silt/sand laminae or beds. Most of the laminae are disrupted by drilling disturbance.
2	[Hatched pattern]	2		[Horizontal lines]	W			
3	[Hatched pattern]	3		[Horizontal lines]	W			
4	[Hatched pattern]	4		[Horizontal lines]	W			
5m	[Dotted pattern]	CC		[Vertical lines]	W	M		



SITE 933 HOLE A CORE 27X

CORED 244.5 - 254.2 mbsf

Meter	Graphic Lith.	Section	Age	Structure	Disturb	Sample	Color	Description
1	[Pattern]	1	middle Pleistocene	[Symbol]	[Symbol]		5Y 3/1	<p>SILTY CLAY WITH THICK SAND BEDS</p> <p>Major Lithology: The core is composed of dark gray clays containing silt laminae and silt/sand beds. The clays are interbedded with 30- to 50-cm-thick beds of fine sand. Mud clasts occur in sand beds and in the silty clays. The whole core is disturbed by drilling.</p>
2	[Pattern]	2		[Symbol]	[Symbol]			
3	[Pattern]	3		[Symbol]	[Symbol]			
4	[Pattern]	4		[Symbol]	[Symbol]	S ₁		
5	[Pattern]	5		[Symbol]	[Symbol]	M		

