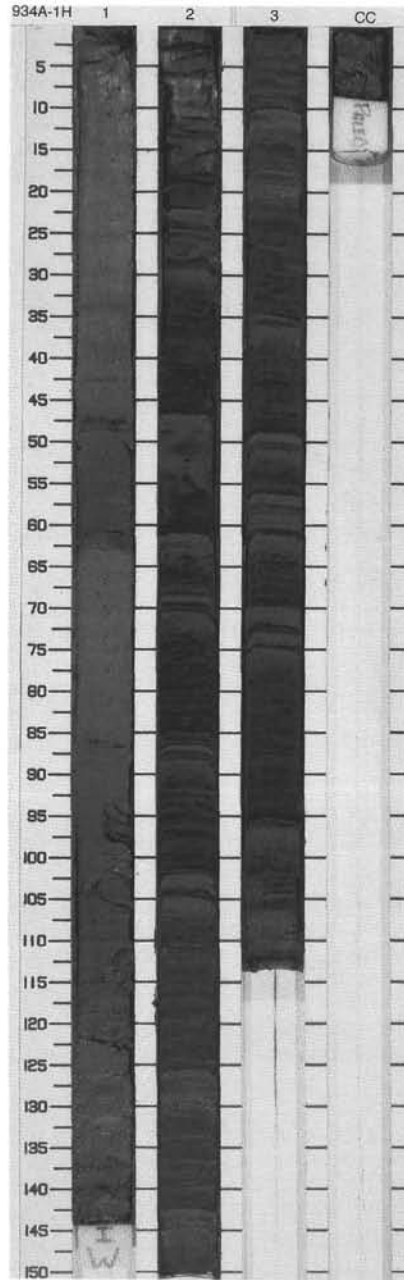


SITE 934 HOLE A CORE 1H

CORED 0.0 - 4.3 mbsf

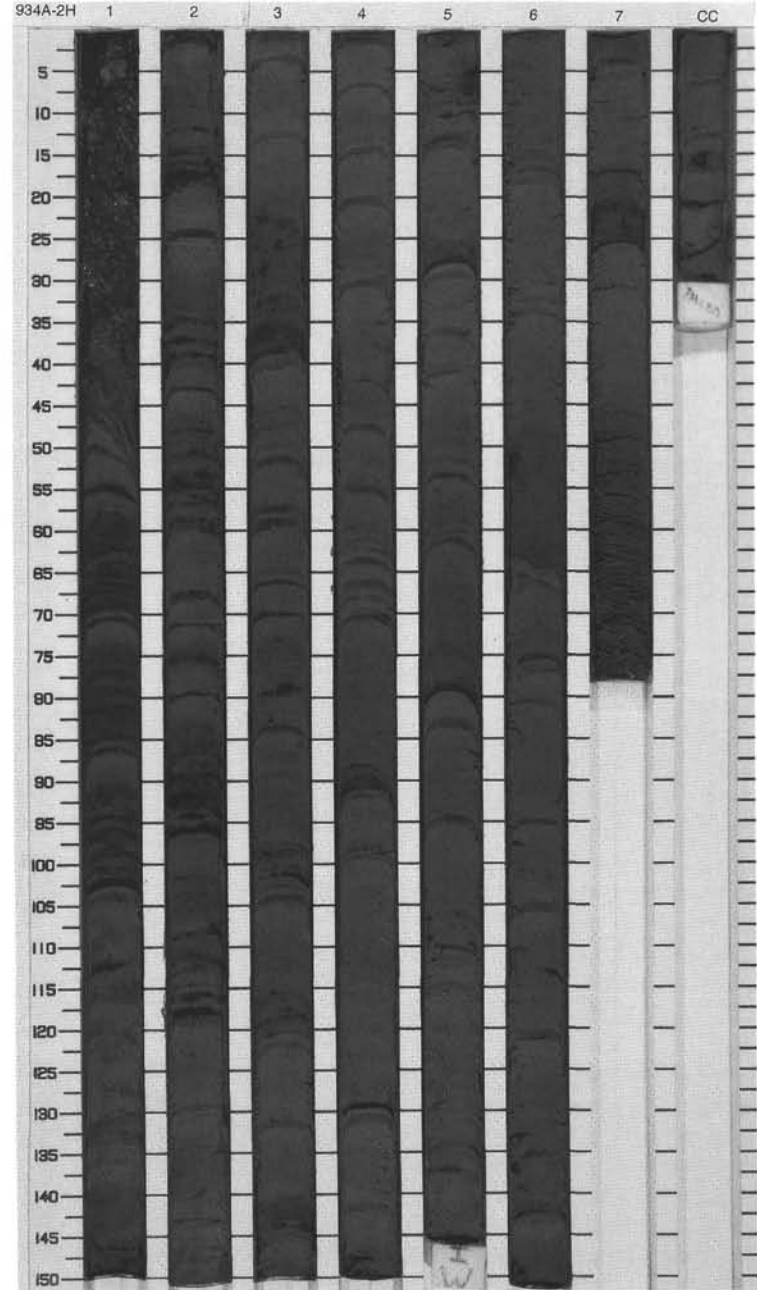
Meter	Graphic Lith.	Section	Age	Structure	Disturb	Sample	Color	Description
0.0 - 1.0	[Graphic Lithology: Dotted pattern]	1	Holocene	[Structure: Horizontal lines with small circles]		S	10YR 5/3	<p>CALCAREOUS CLAY, CLAY and SILTY CLAY WITH SILT LAMINAE</p> <p>Major Lithologies:                      The top 87 cm of Section 1 is composed of brown to dark greenish gray calcareous clay. Nannofossils and foraminifers dominate the calcareous component. This interval contains two distinctive crusts of indurated clays and concretions. The upper (Section 1, 47-48 cm), is olive brown (2.5Y 4/4); the lower, at the base of the calcareous clay (Section 1, 86-87 cm), is olive gray (5Y 4/2). A pteropod-rich layer occurs at 66 cm in Section 1.</p>
1.0 - 1.5	[Graphic Lithology: Dotted pattern]	1	Holocene	[Structure: Horizontal lines with small circles]		S	5GY 5/1	
1.5 - 2.0	[Graphic Lithology: Dotted pattern]	1	Holocene	[Structure: Horizontal lines with small circles]		S	5Y 4/1	
2.0 - 2.5	[Graphic Lithology: Dotted pattern]	1	Holocene	[Structure: Horizontal lines with small circles]		S	5Y 4/1	
2.5 - 3.0	[Graphic Lithology: Horizontal dashes]	2	late Pleistocene	[Structure: Horizontal dashes]		S	5Y 4/1 To N1	
3.0 - 3.5	[Graphic Lithology: Horizontal dashes]	2		[Structure: Horizontal dashes]		S	5Y 4/1 To N1	
3.5 - 4.0	[Graphic Lithology: Horizontal dashes]	2		[Structure: Horizontal dashes]		S	5Y 4/1 To N1	
4.0 - 4.3	[Graphic Lithology: Horizontal dashes]	3	late Pleistocene	[Structure: Horizontal dashes]		M		



SITE 934 HOLE A CORE 2H

CORED 4.3 - 13.8 mbsf

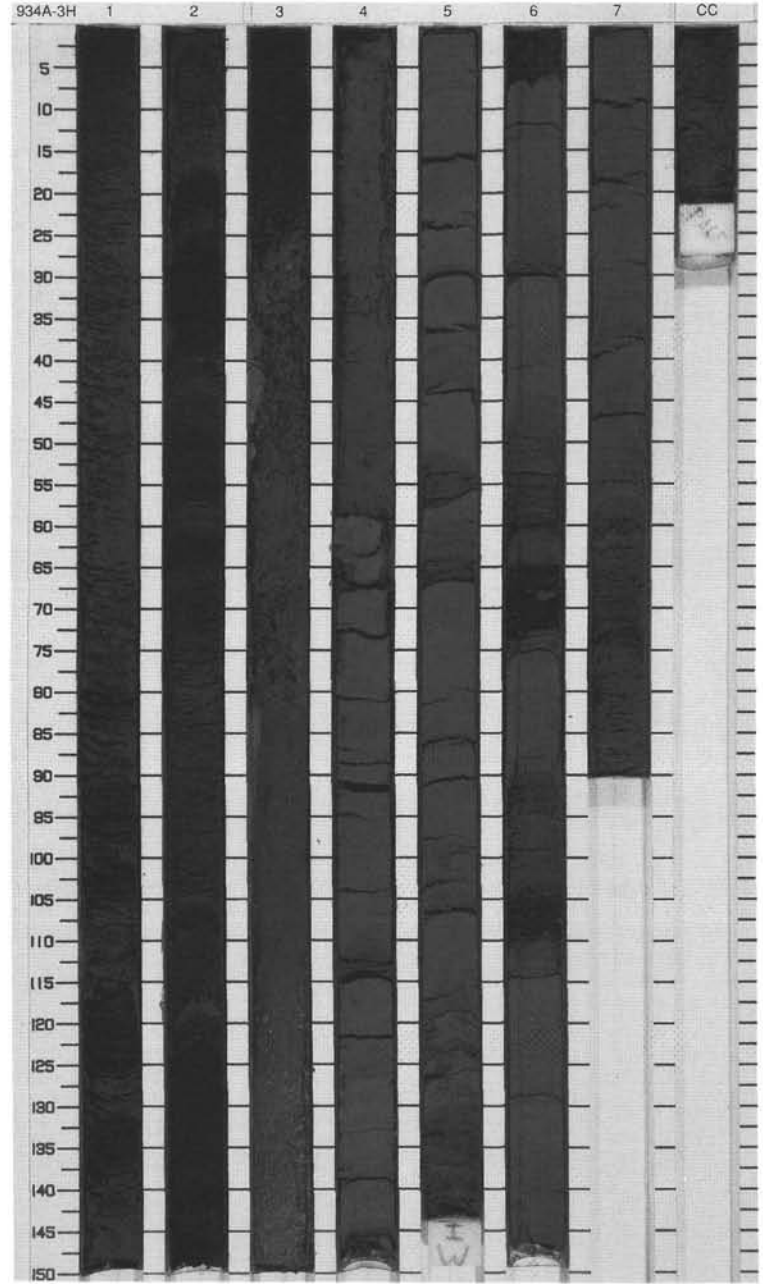
Meter	Graphic Lith.	Section	Age	Structure	Disturb	Sample	Color	Description
1	[Dotted pattern]	1		[Vertical lines]	oo			<p>CLAY and SILTY CLAY WITH SILT LAMINAE AND SILTY SAND BEDS</p> <p>Major Lithologies:                      From Section 1, 0 cm, through Section 3, 31 cm, the sediment consists of dark olive gray clay that contains a few silt laminae. The interval Section 3, 39 cm, through to the bottom of the core, is composed of very dark gray silty clay interbedded with several silt laminae and two silty sand beds. The whole core contains iron monosulfide either disseminated as blebs throughout, or concentrated within the silt laminae.</p>
2	[Dotted pattern]	2		[Vertical lines]				
3	[Dotted pattern]	3		[Vertical lines]				
4	[Dotted pattern]	3		[Vertical lines]				
5	[Dotted pattern]	4	late Pleistocene	[Vertical lines]			5Y 3/1 To 5Y 3/2	
6	[Dotted pattern]	5		[Vertical lines]				
7	[Dotted pattern]	6		[Vertical lines]				
8	[Dotted pattern]	6		[Vertical lines]				
9	[Dotted pattern]	7		[Vertical lines]				
10	[Dotted pattern]	CC		[Vertical lines]				



SITE 934 HOLE A CORE 3H

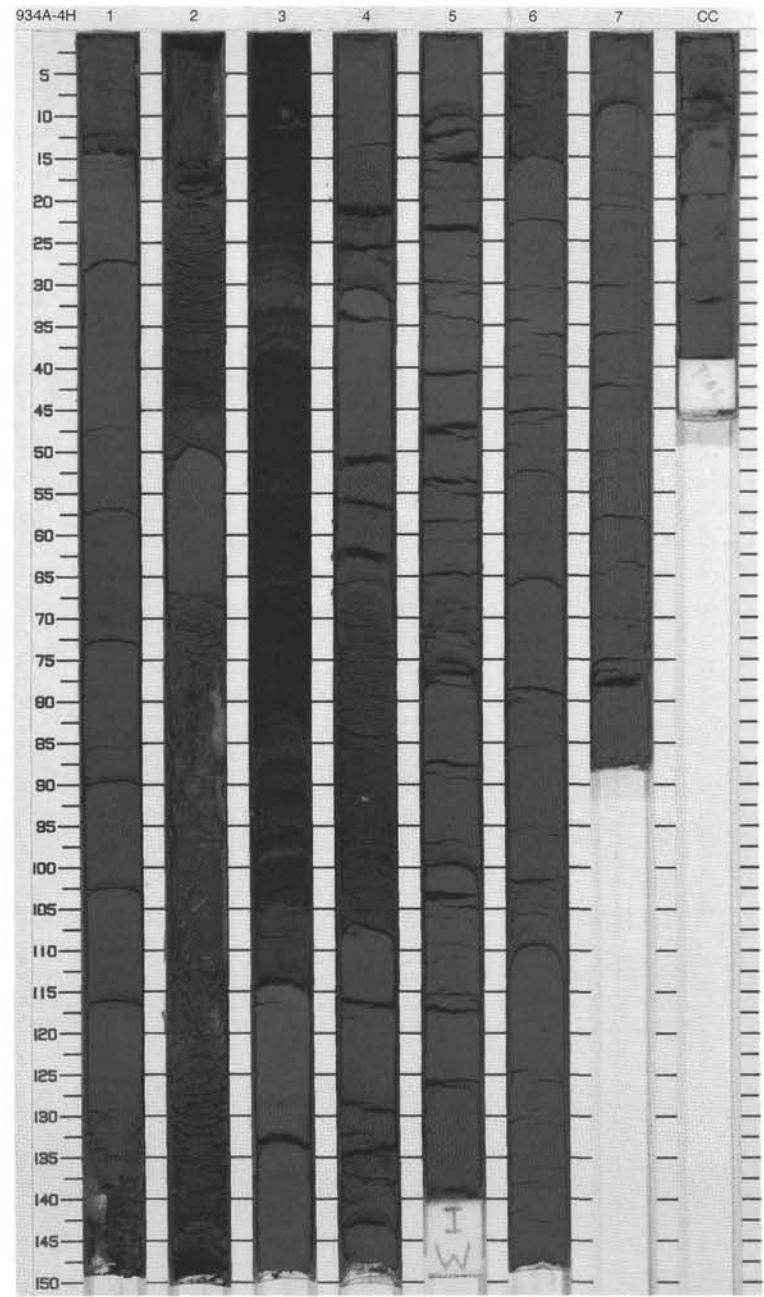
CORED 13.8 - 23.3 mbsf

Meter	Graphic Lith.	Section	Age	Structure	Disturb	Sample	Color	Description
1		1	late Pleistocene		S		5Y 3/1 To N2	FINE SAND and SILTY CLAY WITH SILT AND SAND BEDS  Major Lithologies: From the top of the core through Section 4, 59 cm, the sediment consists of very dark gray to black sand; the black intervals contain plant debris. In the interval Section 4, 59 cm, through Section 7, 60 cm, several graded beds of silty clay with coarse silt and/or fine-sand beds at their base occur. The interval Section 7, 60 cm, to the bottom of the core consists of fine sand.
2		2						
3		3						
4		4						
5		5						
6		6						
7		7						
8		8						
9		9						
10		10						
		CC						
						M		



SITE 934 HOLE A CORE 4H CORED 23.3 - 32.8 mbsf

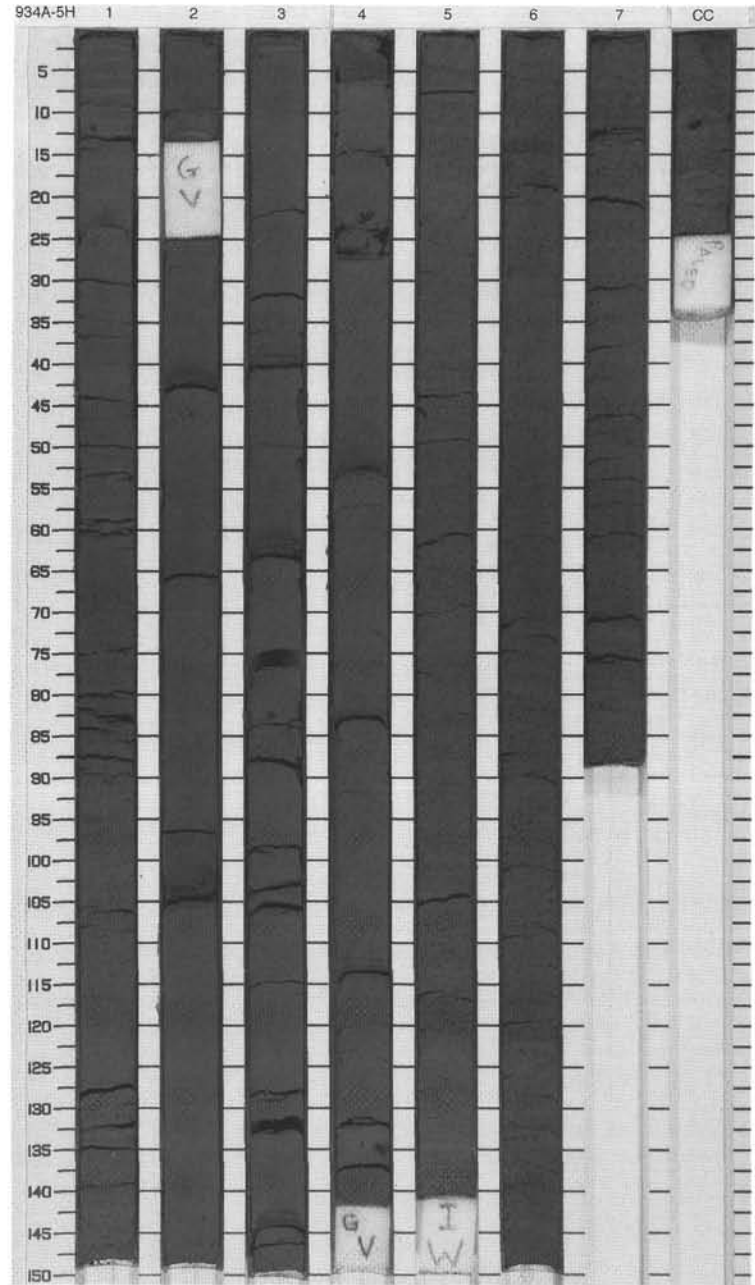
Meter	Graphic Lith.	Section	Age	Structure	Disturb	Sample	Color	Description
1	[Pattern]	1		[Symbol]			5Y 3/2	<p>SILTY CLAY WITH SANDY SILT LAMINAE AND BEDS and FINE SAND</p> <p>Major Lithologies: The core consists of very dark gray silty clay that is intercalated with decimeter- to meter-thick beds of fine sand or muddy sand. The silty clay contains silt laminae and silty sand beds that contain fine grains of iron monosulfide. Centimeter- to decimeter-thick black (5Y 2.5/1) layers, rich in plant debris, occur within the massive sand beds.</p>
2	[Pattern]	2		[Symbol]			5Y 3/1	
3	[Pattern]	3		[Symbol]				
4	[Pattern]	3		[Symbol]				
5	[Pattern]	4	late Pleistocene	[Symbol]				
6	[Pattern]	4		[Symbol]				
7	[Pattern]	5		[Symbol]			5Y 3/2	
8	[Pattern]	6		[Symbol]				
9	[Pattern]	7		[Symbol]				
10	[Pattern]	CC		[Symbol]				
						S		
						I		
						M		



SITE 934 HOLE A CORE 5H

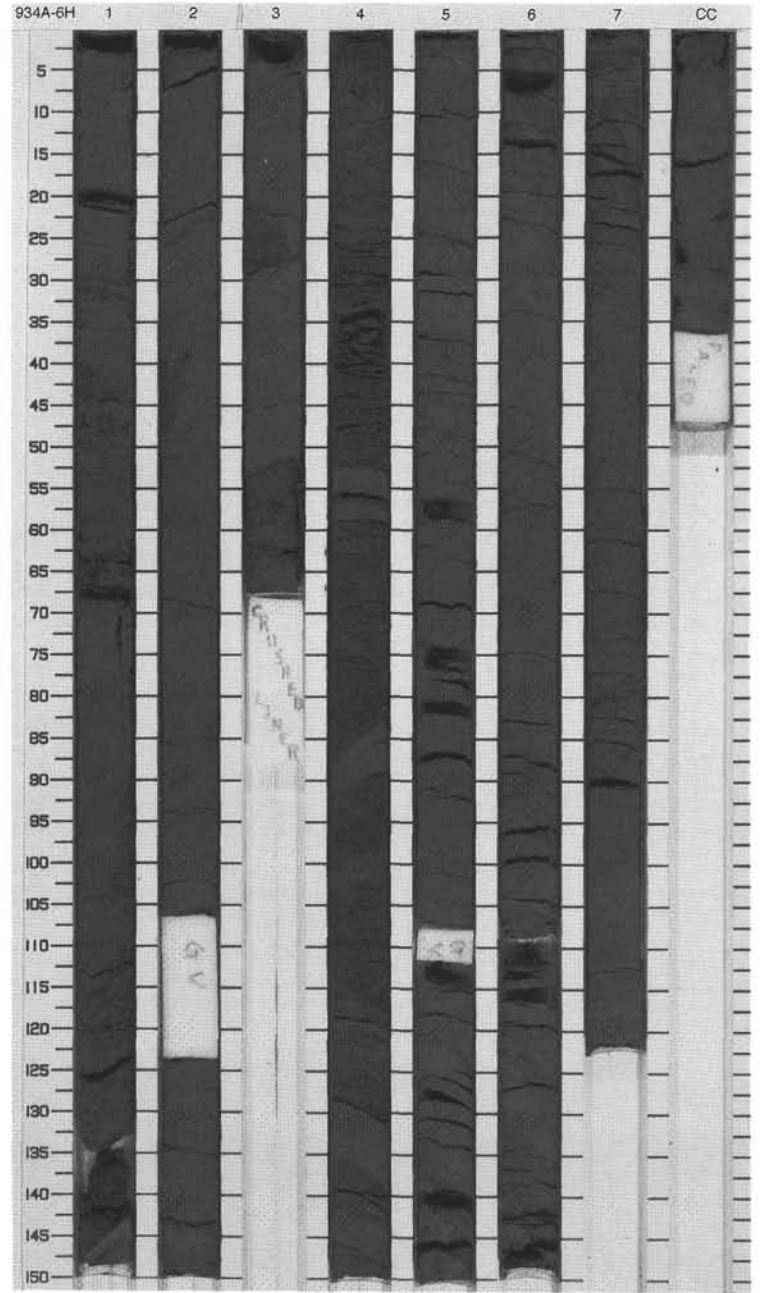
CORED 32.8 - 42.3 mbsf

Meter	Graphic Lith.	Section	Age	Structure	Disturb	Sample	Color	Description
1	[Pattern]	1		[Symbol]	W			<p>SILTY CLAY WITH SILT/SAND LAMINAE AND BEDS and CLAY</p> <p>Major Lithologies:                      Section 1, 0 cm, through Section 4, 59 cm, consists of a very dark gray silty clay. The clay contains 20- to 40-cm-thick fining-upward sequences, each with silty sand beds or sandy silt laminae at the base. From Section 4, 59 cm, to the bottom of the core, a structureless clay is the dominant lithology.</p>
2	[Pattern]	2		[Symbol]				
3	[Pattern]	3		[Symbol]				
4	[Pattern]	4		[Symbol]				
5	[Pattern]	4	late Pleistocene	[Symbol]				
6	[Pattern]	5		[Symbol]		5Y 3/2		
7	[Pattern]	6		[Symbol]	I			
8	[Pattern]	7		[Symbol]				
9	[Pattern]	8		[Symbol]				
10	[Pattern]	CC		[Symbol]	M			



SITE 934 HOLE A CORE 6H CORED 42.3 - 51.8 mbsf

Meter	Graphic Lith.	Section	Age	Structure	Disturb	Sample	Color	Description
1	[Dotted pattern]	1	2	2		S		<p>SILTY CLAY AND SANDY SILT</p> <p>Major Lithology: This core contains dark olive gray silty clay and sandy silt. The sediment displays contorted bedding, occasional silt laminae, and some sandy silt beds. The bed in Section 4, 0-52 cm, is graded.</p>
2	[Horizontal lines]	2	2	2		S		
3	[Horizontal lines]	3	2	2		S		
4	[Void]	4	2	2		S		
5	[Dotted pattern]	4	late Pleistocene	1		S	5Y 3/2	
6	[Horizontal lines]	5		1				
7	[Horizontal lines]	5						
8	[Horizontal lines]	6	2					
9	[Horizontal lines]	7	2					
10	[Horizontal lines]	CC		1		M		

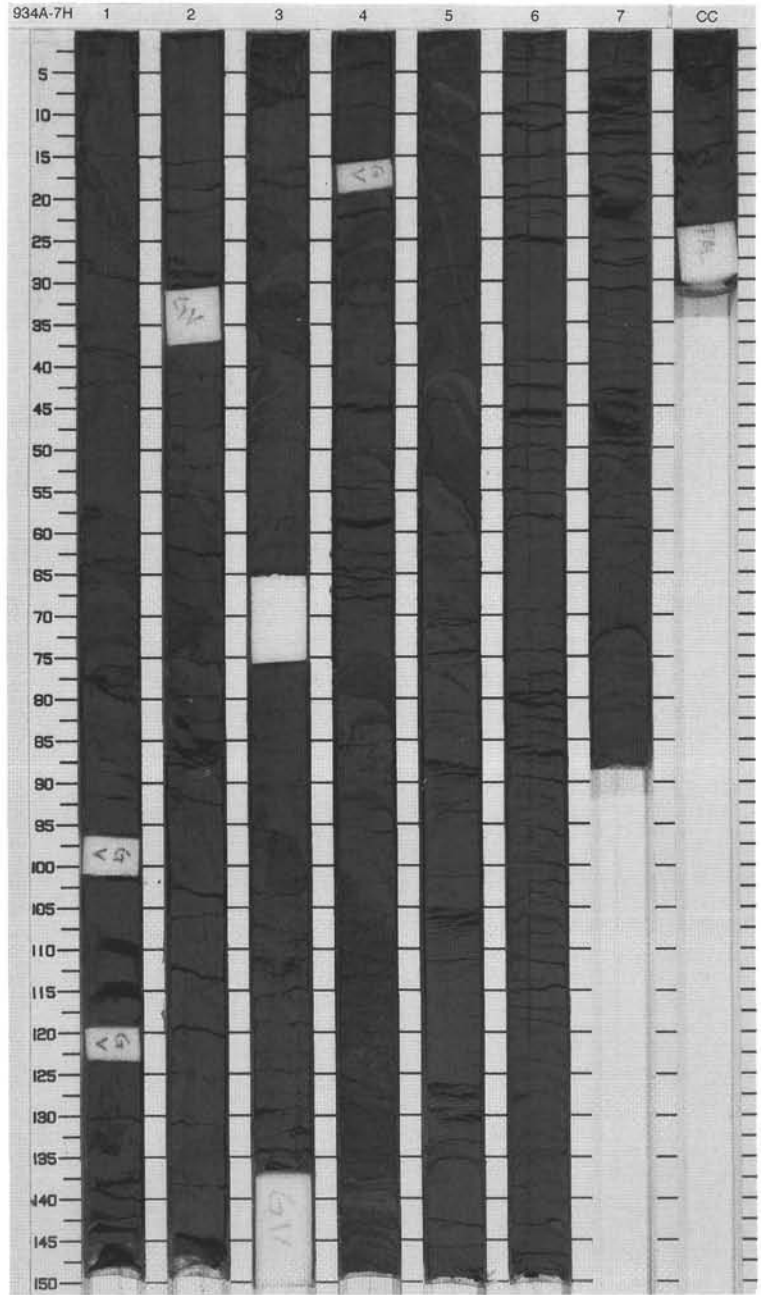




SITE 934 HOLE A CORE 7H

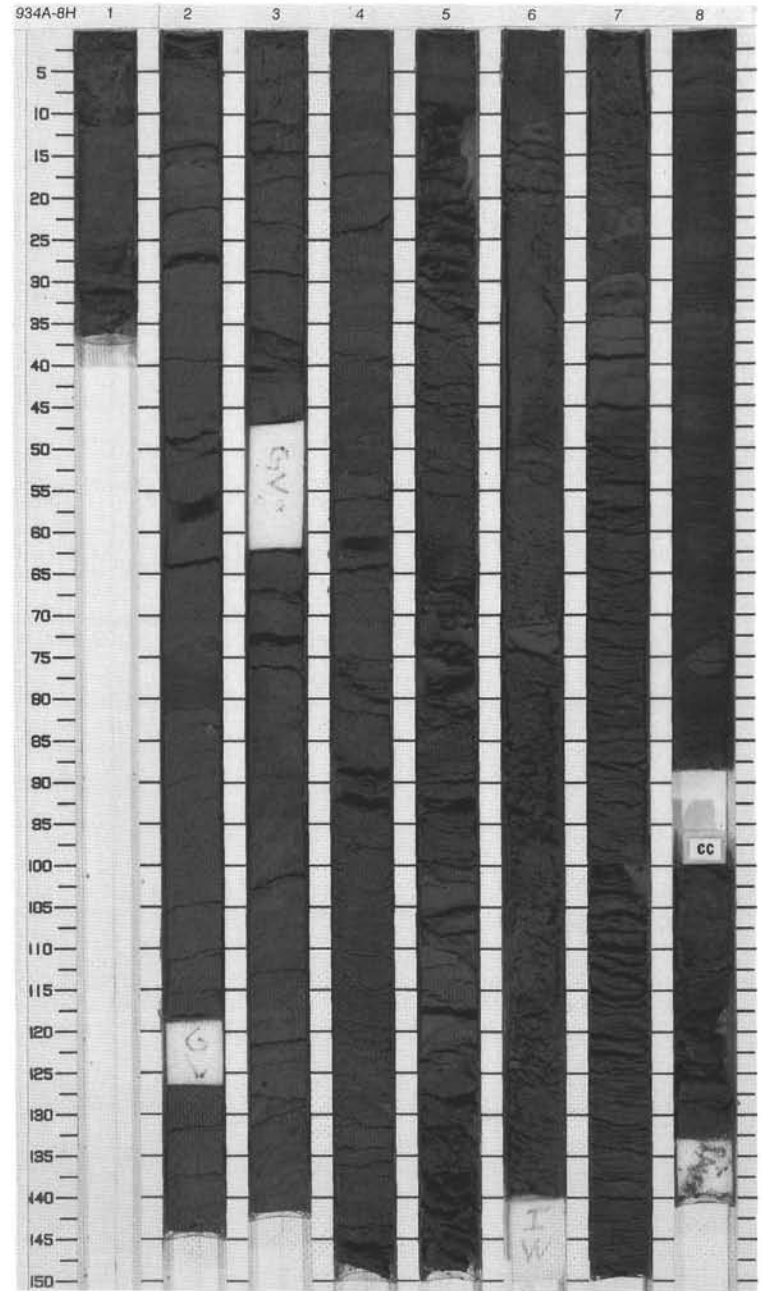
CORED 51.8 - 61.3 mbsf

Meter	Graphic Lith.	Section	Age	Structure	Disturb	Sample	Color	Description
1		1	2					<p>SILTY CLAY</p> <p>Major Lithology: This core contains highly contorted dark olive gray silty clays with occasional intercalations and clasts of silty sand and sand.</p>
2		2	2					
3		3	3					
4		4	4					
5		5	4	late Pleistocene			5Y 3/2	
6		6	5					
7		7	6					
8		8	7					
9		9	CC					
10		10	M					



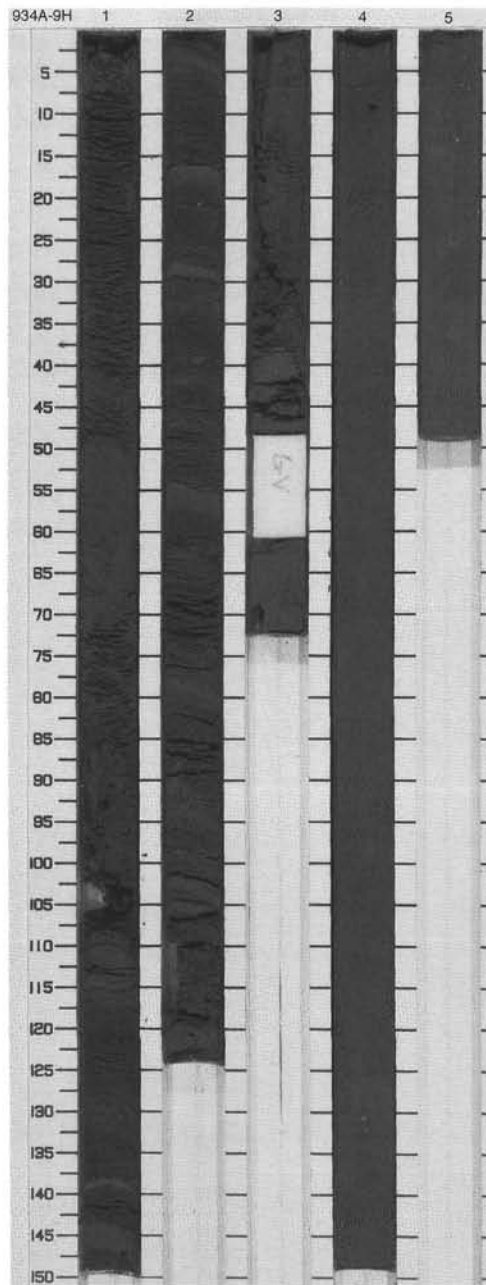
SITE 934 HOLE A CORE 8H CORED 61.3 - 70.8 mbsf

Meter	Graphic Lith.	Section	Age	Structure	Disturb	Sample	Color	Description
0		1						SILTY CLAY AND SANDY SILT WITH MUD CLASTS
1		2	2	∅		S		Major Lithology: Section 1, 0 cm, through Section 4, 150 cm, is composed of structureless silty clay that contains disseminated wood fragments. Section 5, 0 cm, through CC, 42 cm, consists of structureless sandy silt that contains numerous mud clasts – some of which appear to be carbonate rich.
2		3	∅					
3		4	∅					
4		4	∅					
5		5	late Pleistocene	◆		S	5Y 3/2	
6		5		◆				
7		6		◆				
8		6		◆				
9		7		◆				
10		8		◆				
		CC				M		





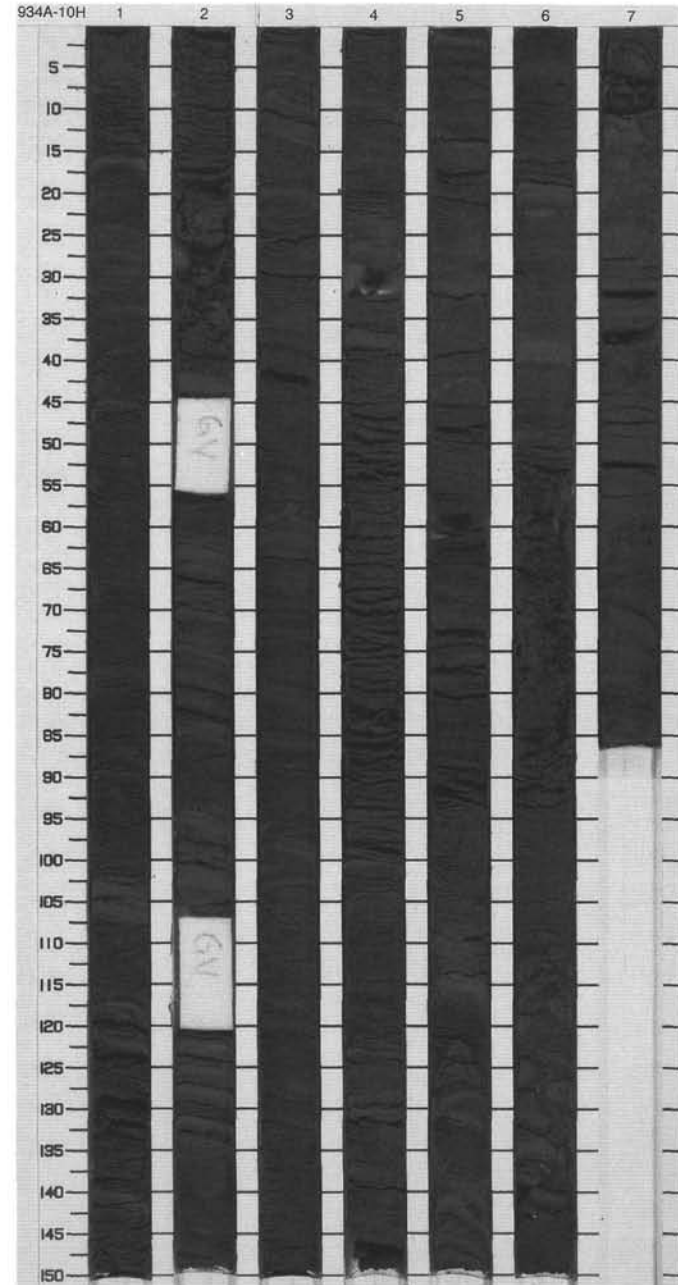
Meter	Graphic Lith.	Section	Age	Structure	Disturb	Sample	Color	Description	
1	[Dotted pattern]	1	late Pleistocene	◆	○		5Y 3/2	<p><b>SAND AND MUD CLASTS</b></p> <p>Major Lithology: This core consists of medium- to coarse-grained sand. Intercalated within interval Section 1, 110 cm, through Section 3, 60 cm, are mud clasts.</p> <p>General Description: The sediment within Sections 4, 5, and CC were disturbed during core recovery, and, as such, any structure within these sections is the result of post-recovery disturbance, and is therefore not primary in formation.</p>	
2		2		◆	○				
3		3		◆	○	WW			
4		4		◆	○				S
5		5		◆	○				S
6		CC			○		M		



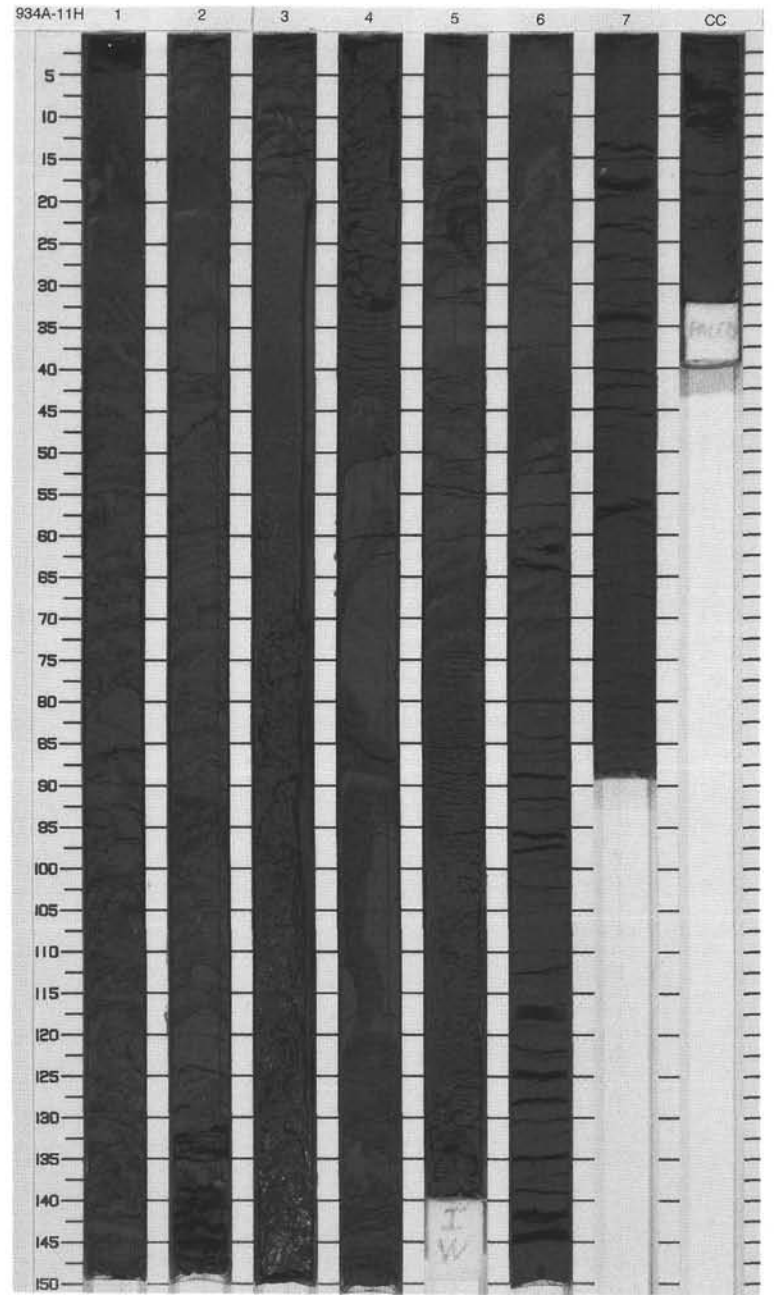
## SITE 934 HOLE A CORE 10H

CORED 80.3 - 89.8 mbsf

Meter	Graphic Lith.	Section	Age	Structure	Disturb	Sample	Color	Description
1		1	late Pleistocene	—	○			MUDDY SAND WITH SAND BEDS AND MUD CLASTS  Major Lithology: This core consists of muddy sand with occasional sand and silt beds—some display grading. Section 6, 110 cm, to the bottom of the core contains numerous mud clasts.
2		2		—	○			
3		3		—	○			
4		4		—				
5		5		—				
6		6		—				
7		7		—				
8		6		—	○○○		5Y 4/1	
9		7		◆◆◆◆			M	



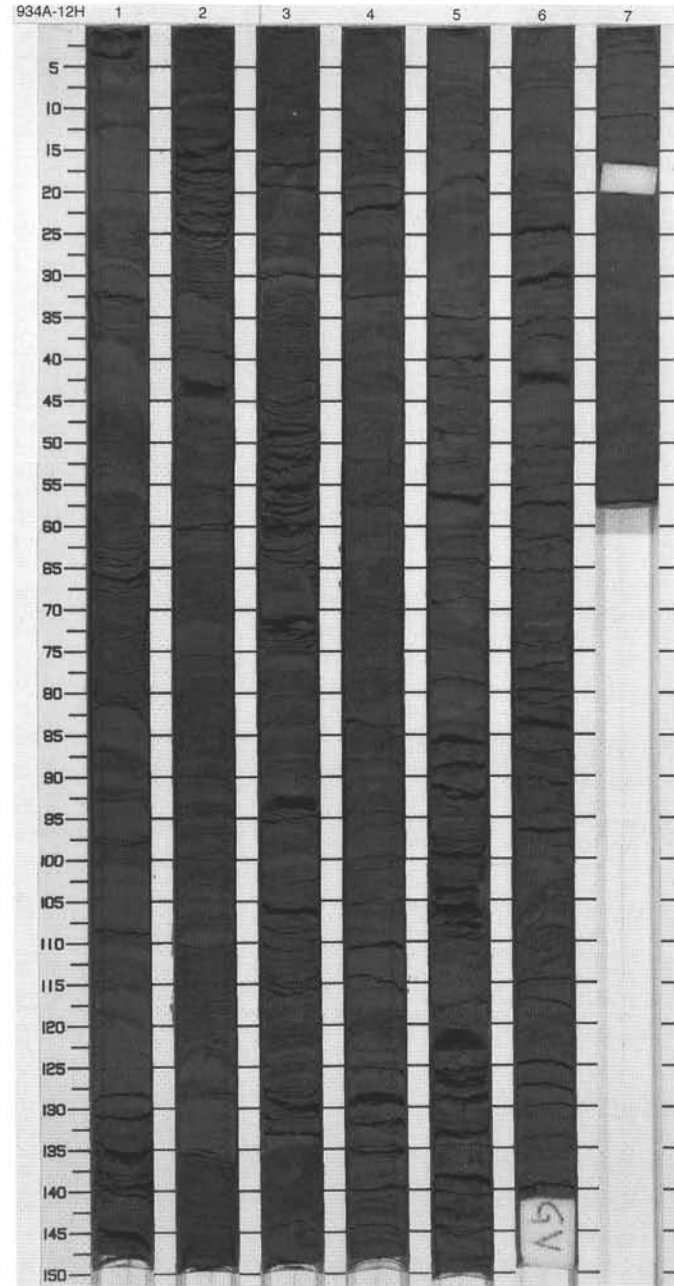
Meter	Graphic Lith.	Section	Age	Structure	Disturb	Sample	Color	Description
1	[Dotted pattern]	1	late Pleistocene	◆			5Y 4/2 To 5Y 3/2	SAND WITH MUD CLASTS Major Lithology: This core consists of medium to coarse sand. The interval Section 1, 30 cm, through Section 3, 19 cm, contains numerous mud clasts. The interval Section 4, 51-150 cm, contains highly contorted bedding.
2		5Y 4/1 To 5Y 6/4						
3		5Y 4/1						
4		5Y 5/3						
5		5Y 4/1						
6		I					5Y 5/3 To 5Y 4/1	
7							S	
10	[Horizontal line pattern]	CC				M		



SITE 934 HOLE A CORE 12H

CORED 99.3 - 108.8 mbsf

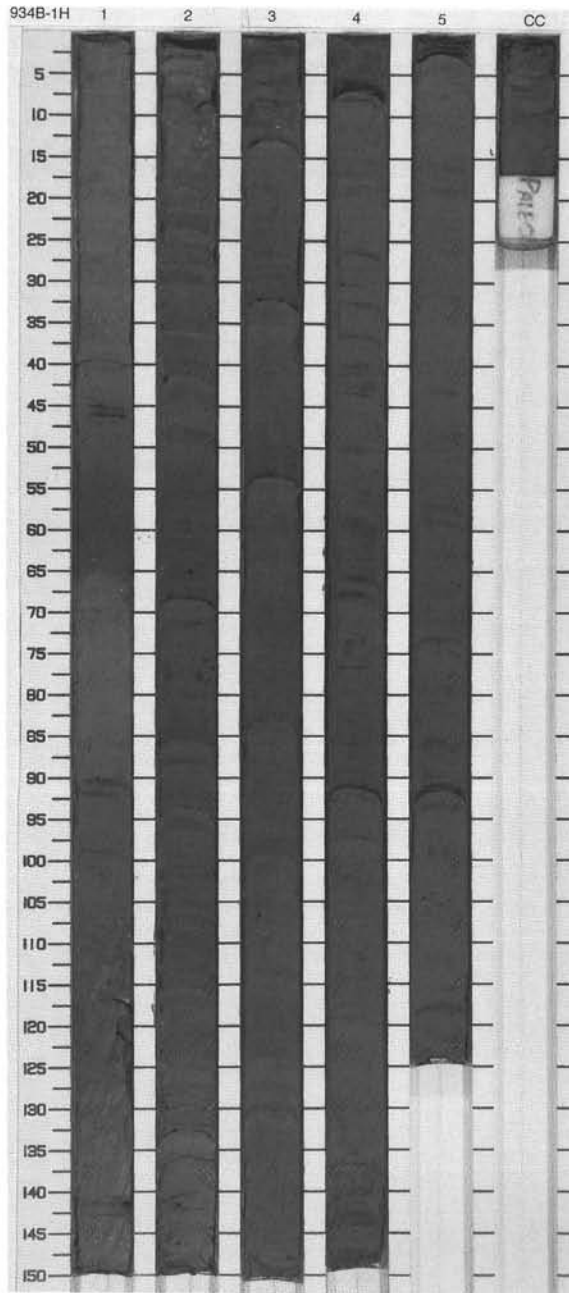
Meter	Graphic Lith.	Section	Age	Structure	Disturb	Sample	Color	Description
1	[Hatched pattern]	1	late Pleistocene	[Hatched pattern]			5Y 4/1	SILTY CLAY WITH SILT LAMINAE AND SAND  Major Lithology: This core consists of silty clay. The interval Section 1, 0 cm, through Section 5, 118 cm, contains numerous silt and fine sand laminae and beds. The interval Section 5, 118 cm, to the bottom of the core, consists of silty clay with disseminated veins and blebs of medium and fine sand.
2	[Hatched pattern]	2						
3	[Hatched pattern]	3						
4	[Hatched pattern]	3						
5	[Hatched pattern]	4						
6	[Hatched pattern]	4						
7	[Hatched pattern]	5						
8	[Hatched pattern]	6				5Y 3/2		
9	[Hatched pattern]	7						
						M		



SITE 934 HOLE B CORE 1H

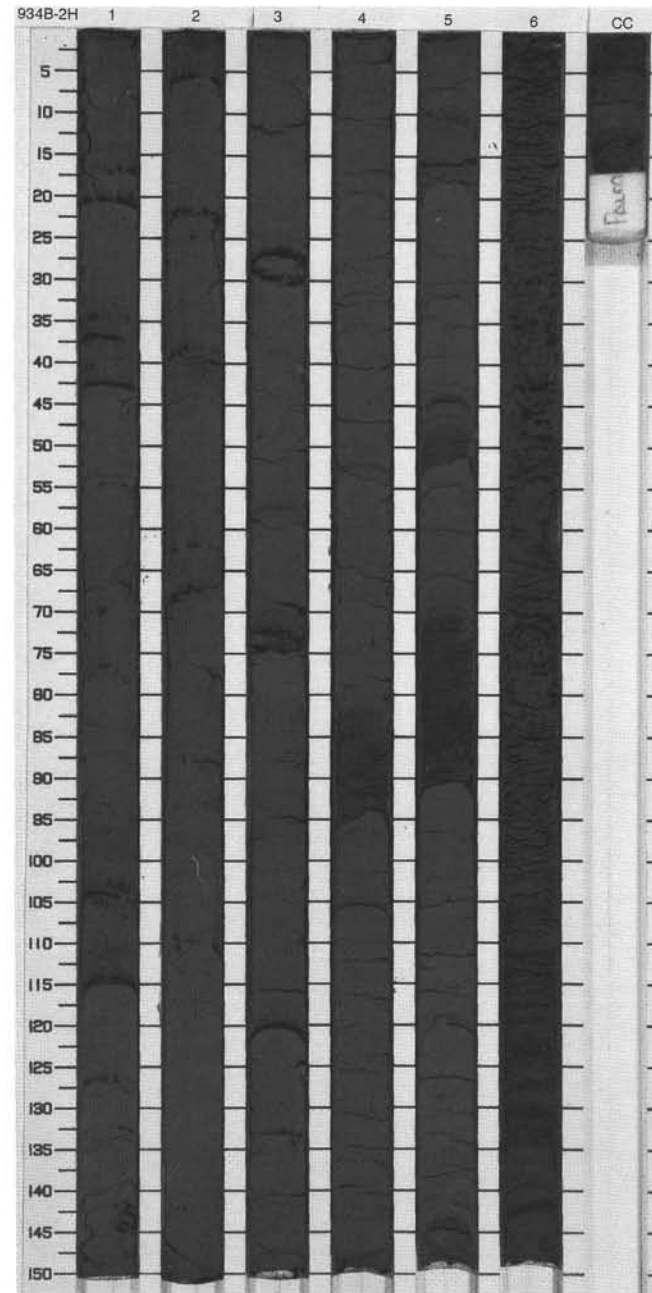
CORED 0.0 - 7.5 mbsf

Meter	Graphic Lith.	Section	Age	Structure	Disturb	Sample	Color	Description
0.0 - 0.93	[Cross-hatched pattern]	1	Holocene	[Horizontal lines with small circles]			10YR 5/3 10YR 4/1 2.5Y 4/2	<p>CALCAREOUS CLAY, CLAY and SILTY</p> <p>Major Lithologies: The top 93 cm of Section 1 consists of brown to gray calcareous clay. Nannofossils and foraminifers are the major calcareous component. This interval contains two distinctive dark brown (10YR 3/3 and 7.5YR 3/2) crusts of indurated clay at 44-47 and 90-93 cm. A pteropod-rich layer occurs at 66 cm in Section 1. Section 1, 93 cm, CLAY WITH SILT LAMINAE through Section 2, 5 cm, consists of a dark grayish brown clay. A silty clay containing few iron monosulfide-rich silt laminae and sandy silt beds occurs from Section 2, 5 cm, through to the bottom of the core.</p>
0.93 - 7.5	[Horizontal dashed pattern]	2	late Pleistocene	[Horizontal lines with various symbols]			5Y 4/1 To 5Y 3/2	
7.5 - 7.5	[Cross-hatched pattern]	CC				M		



SITE 934 HOLE B CORE 2H CORED 7.5 - 17.5 mbsf

Meter	Graphic Lith.	Section	Age	Structure	Disturb	Sample	Color	Description
1	[Hatched pattern]	1						<p>SILTY CLAY WITH SILT LAMINAE AND SILTY SAND BEDS and FINE SAND</p> <p>Major Lithologies:                      From the top of the core through Section 5, 145 cm, the lithology consists of very dark gray silty clay. Several silt laminae are intercalated within the silty clays in Sections 1 through 3. The laminae increase in thickness and grain size downcore. Silty sand beds occur in Section 4, 81-94 cm, and within intervals, Section 5, 10-18, 43-51, and 70-91 cm. Section 6, 5 cm, through to the bottom of the core consists of silty clay.</p>
2	[Hatched pattern]	2						
3	[Hatched pattern]	3						
4	[Hatched pattern]	3	late Pleistocene					
5	[Hatched pattern]	4					5Y 3/2	
6	[Dotted pattern]	4						
7	[Dotted pattern]	5						
8	[Dotted pattern]	5						
9	[Dotted pattern]	6						
		CC				M		

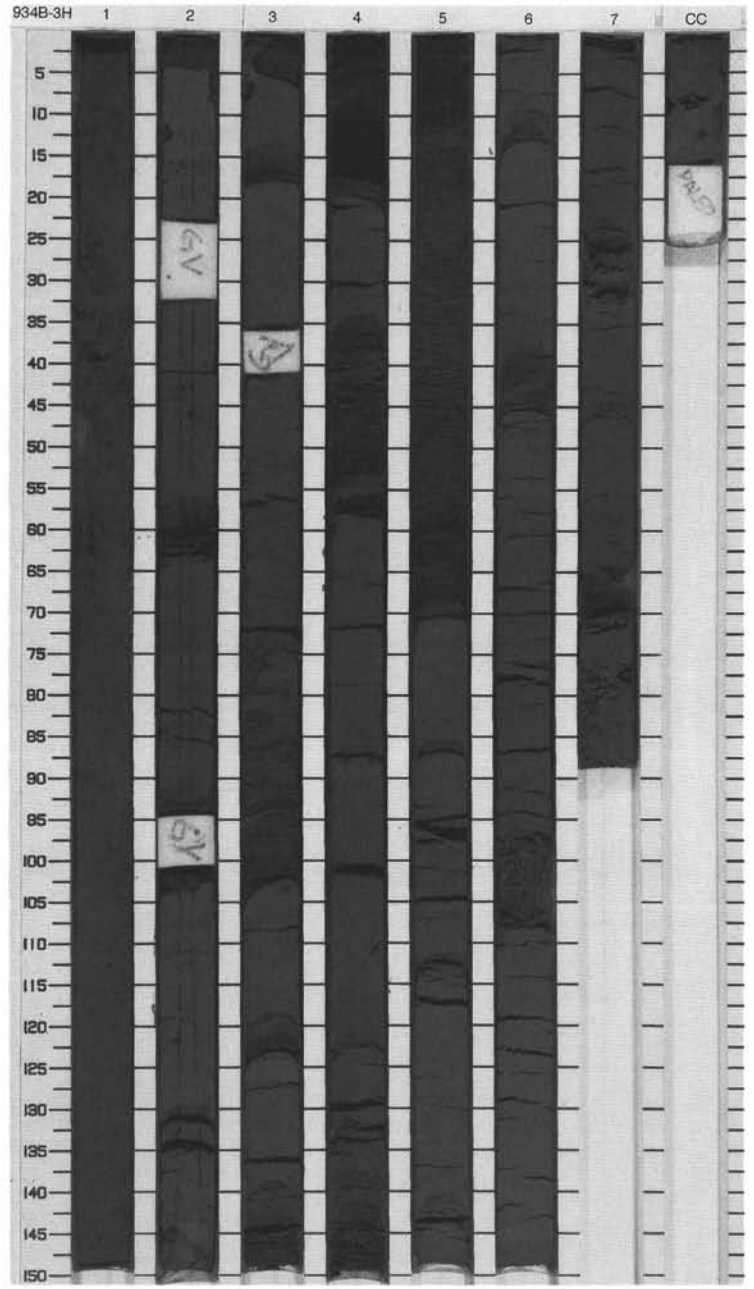




SITE 934 HOLE B CORE 3H

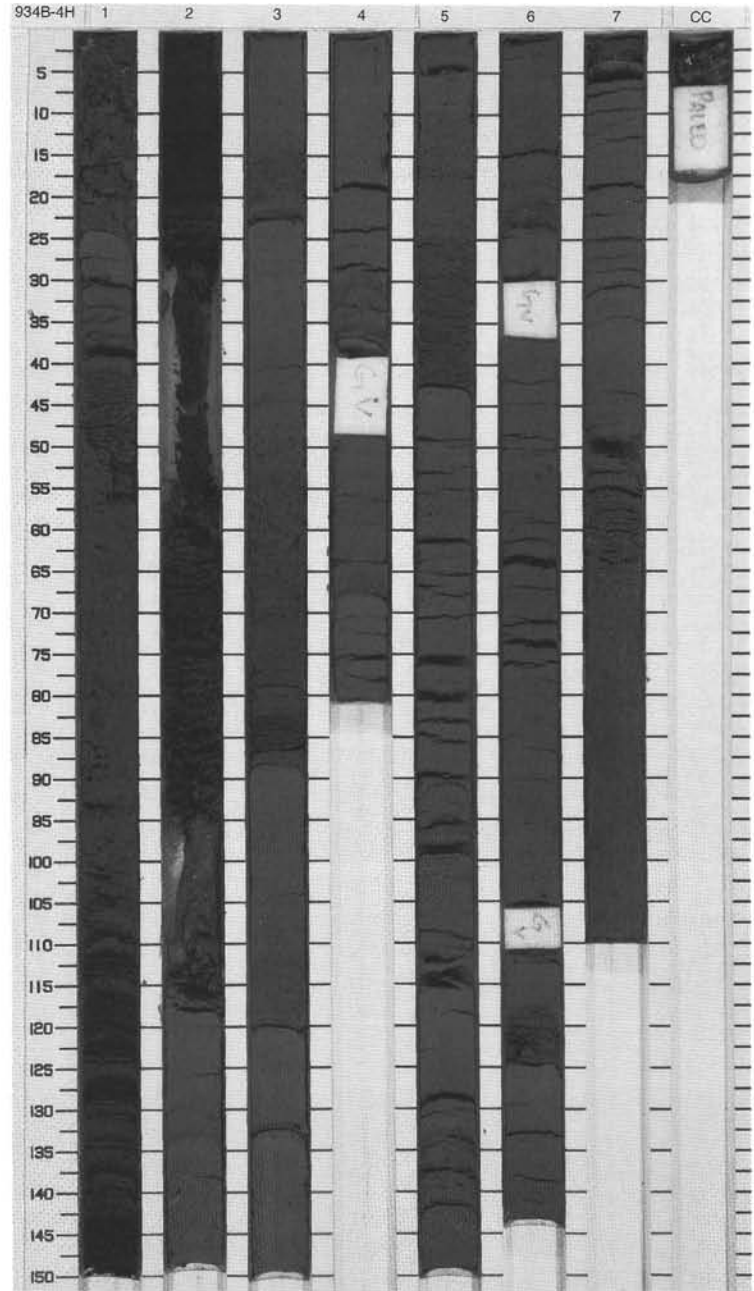
CORED 17.5 - 26.5 mbsf

Meter	Graphic Lith.	Section	Age	Structure	Disturb	Sample	Color	Description
1	[Dotted pattern]	1			OOOOOOOOOO		5Y 4/1	FINE SAND and SILTY CLAY WITH SILT LAMINAE AND BEDS OF SILT AND SILTY SAND
2	[Horizontal dashes]	2		[Floral symbols]	OOOOOOOOOO		5Y 3/2	<p>Major Lithologies:                      Two intervals (Section 1, 0 cm, through Section 2, 4 cm, and Section 4, 142 cm, through Section 5, 70 cm) consist of dark gray to very dark gray fine sand. The other intervals within the core consist of dark gray silty clay, which contains silt laminae and beds of silt or silty sand. The thickness of these beds increases downcore.</p>
3	[Horizontal dashes]	3		[Horizontal dashes]		5Y 3/2 To 5Y 2.5/2		
4	[Horizontal dashes]	4	late Pleistocene	[Horizontal dashes]		5Y 3/2		
5	[Horizontal dashes]	5		[Horizontal dashes]		5Y 3/1		
6	[Horizontal dashes]	6		[Horizontal dashes]		5Y 3/2		
7	[Horizontal dashes]	7		[Horizontal dashes]	WWWWW			
10	[Horizontal dashes]	CC				M		



SITE 934 HOLE B CORE 4H CORED 26.5 - 36.0 mbsf

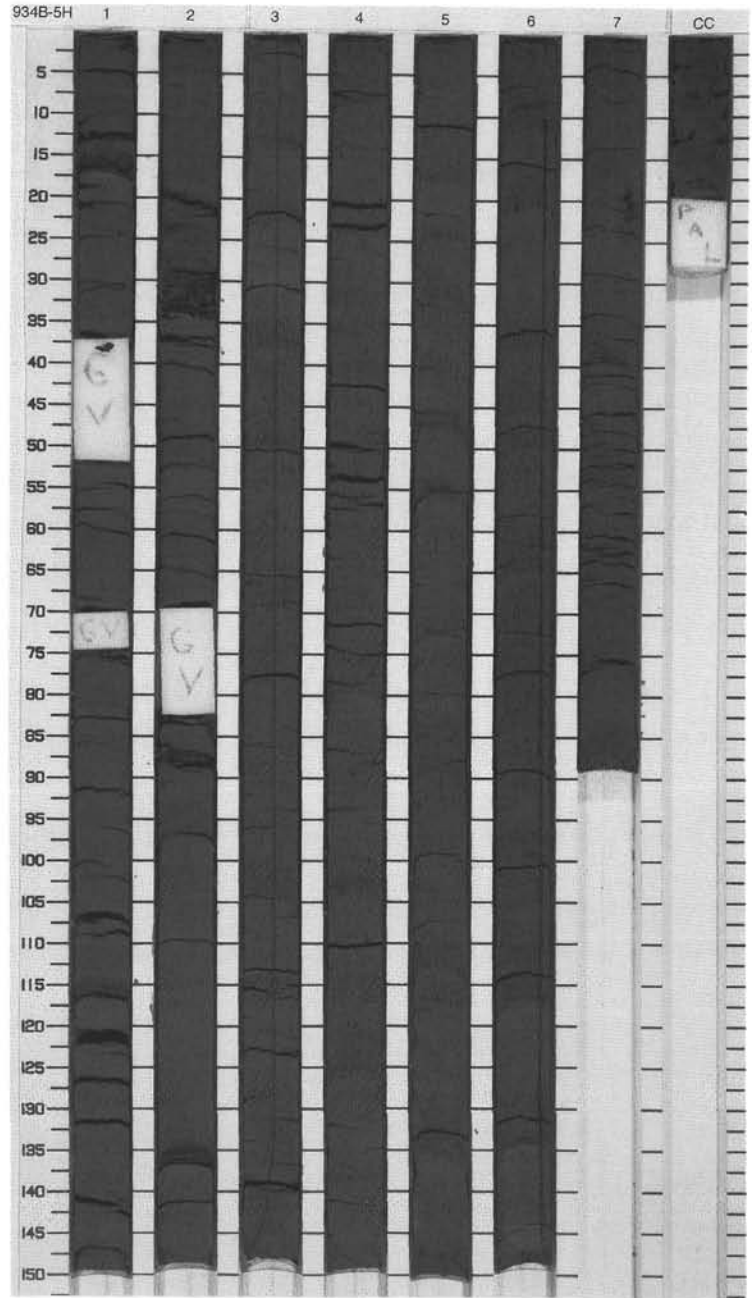
Meter	Graphic Lith.	Section	Age	Structure	Disturb	Sample	Color	Description
1	[Dotted pattern]	1		[Diagonal lines]			5Y 3/2	CLAY, SILT, AND SAND Major Lithology: Between thick (30-120 cm) intervals of fine sand or clay, the core contains 20- to 150-cm-thick fining-upward sequences with fine sand at their base. Sand layers in Sections 1, 2, and 3 have large amounts of plant debris.
2	[Dotted pattern]	2		[Diagonal lines]	ooo		N2	
3	[Dotted pattern]	3		[Diagonal lines]			5Y 3/2 To N2	
4	[Dotted pattern]	4	late Pleistocene	[Diagonal lines]				
5	[Dotted pattern]	5		[Diagonal lines]				
6	[Dotted pattern]	6		[Diagonal lines]			5Y 3/2	
7	[Dotted pattern]	7		[Diagonal lines]				
8	[Dotted pattern]	8		[Diagonal lines]				
9	[Dotted pattern]	9		[Diagonal lines]	ooo			
		CC				M		



SITE 934 HOLE B CORE 5H

CORED 36.0 - 45.5 mbsf

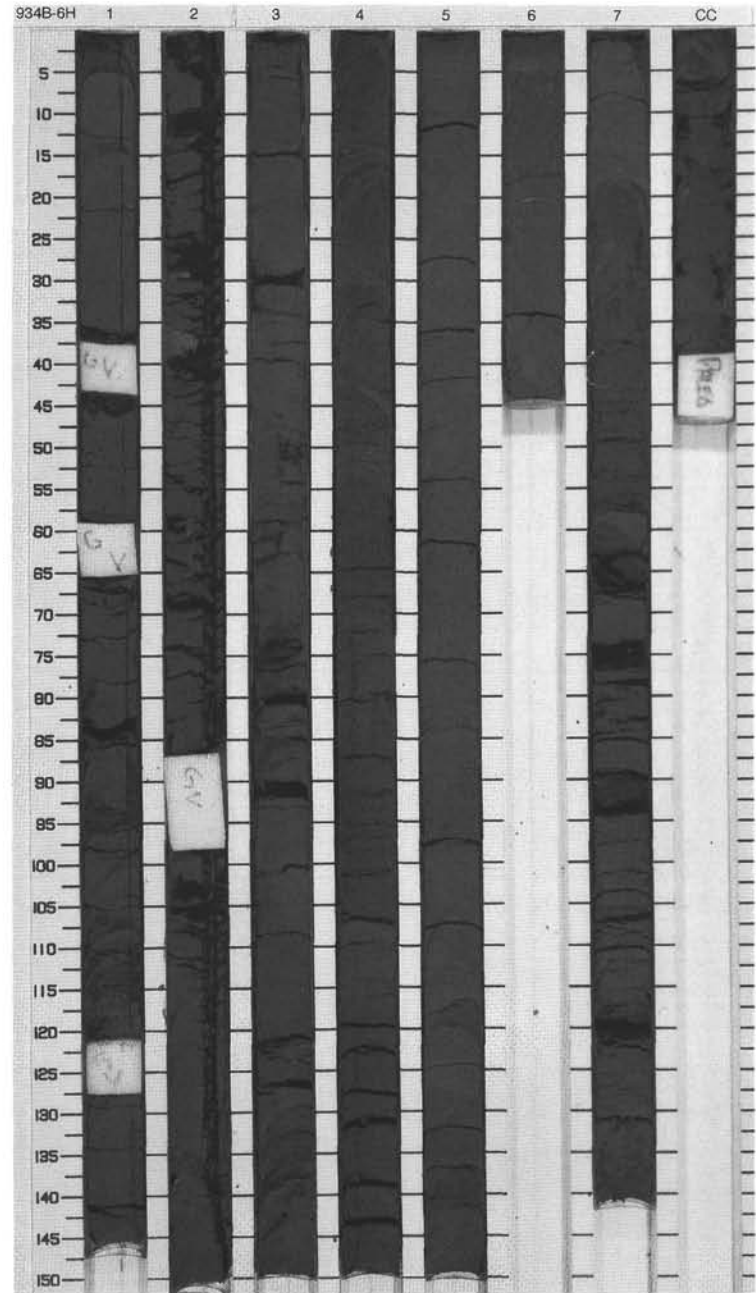
Meter	Graphic Lith.	Section	Age	Structure	Disturb	Sample	Color	Description
1	[Pattern]	1		/				CLAY, SILT AND SAND and SILTY CLAY  Major Lithologies: From the top of the core through Section 3, 29 cm, several fining-upward (silty sand to clay) beds occur. From Section 4, 0 cm, to the bottom of the core, dark gray silty clay is the dominant sediment. The clay contains iron monosulfide micronodules and an isolated mud clast.
2	[Pattern]	2		/				
3	[Pattern]	3		/				
4	[Pattern]	3		/				
5	[Pattern]	4	late Pleistocene				5Y 3/2	
6	[Pattern]	4						
7	[Pattern]	5						
8	[Pattern]	6						
9	[Pattern]	7		◆		S		
10	[Pattern]	CC				M		



## SITE 934 HOLE B CORE 6H

CORED 45.5 - 55.0 mbsf

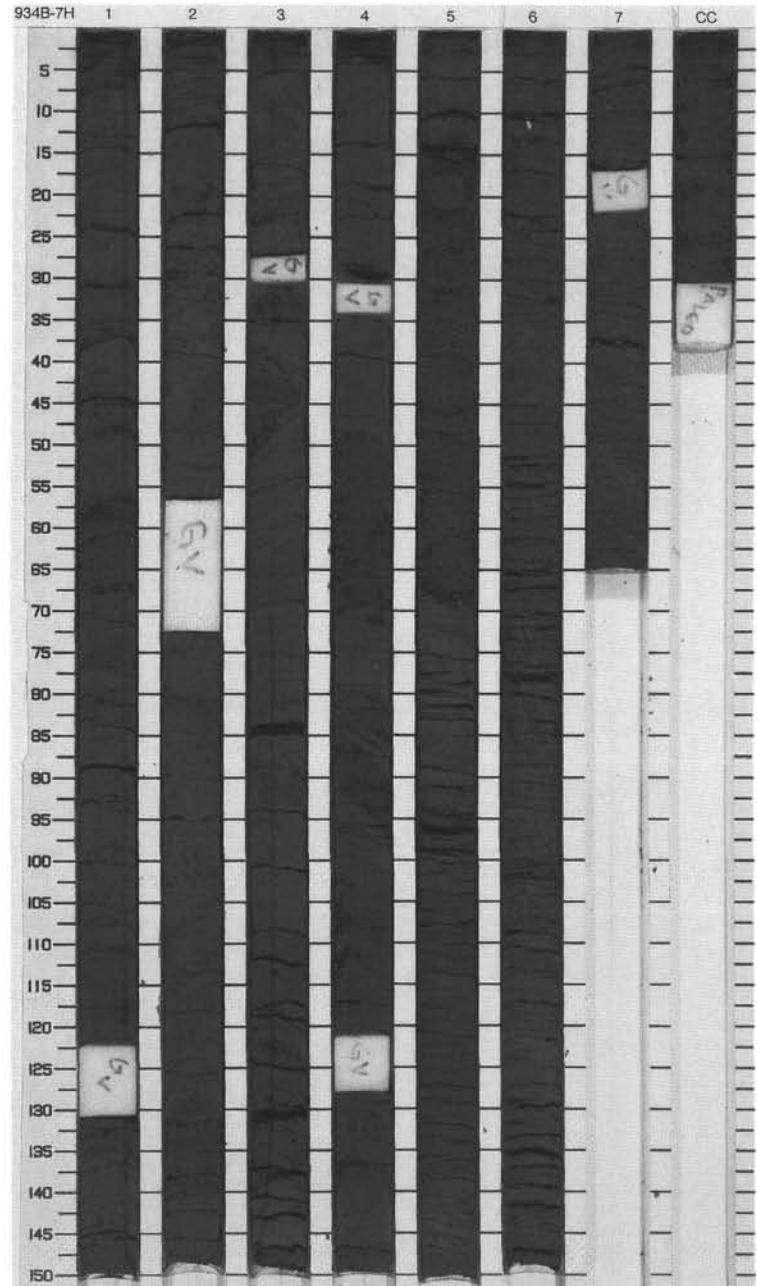
Meter	Graphic Lith.	Section	Age	Structure	Disturb	Sample	Color	Description
1		1						<p><b>SILTY CLAY WITH SILT LAMINAE AND BEDS</b></p> <p><b>Major Lithology:</b> The sediment in this core consists of dark olive gray silty clay. Silt laminae and beds of between 1 and 10 cm thickness are intercalated in the silty clay throughout the core. Micronodules of iron monosulfide are common and lead to black blebs and spots in the silty clay.</p> <p><b>General Description:</b> The whole core is heavily disturbed, probably as a result of gas escape. This process has sheared the silty clay and destroyed contacts between clay and silt laminae and beds.</p>
2		2						
3		3				S		
4		4	late Pleistocene				5Y 3/2	
5		5						
6		6						
7		7						
8								
9								
		CC				M		



SITE 934 HOLE B CORE 7H

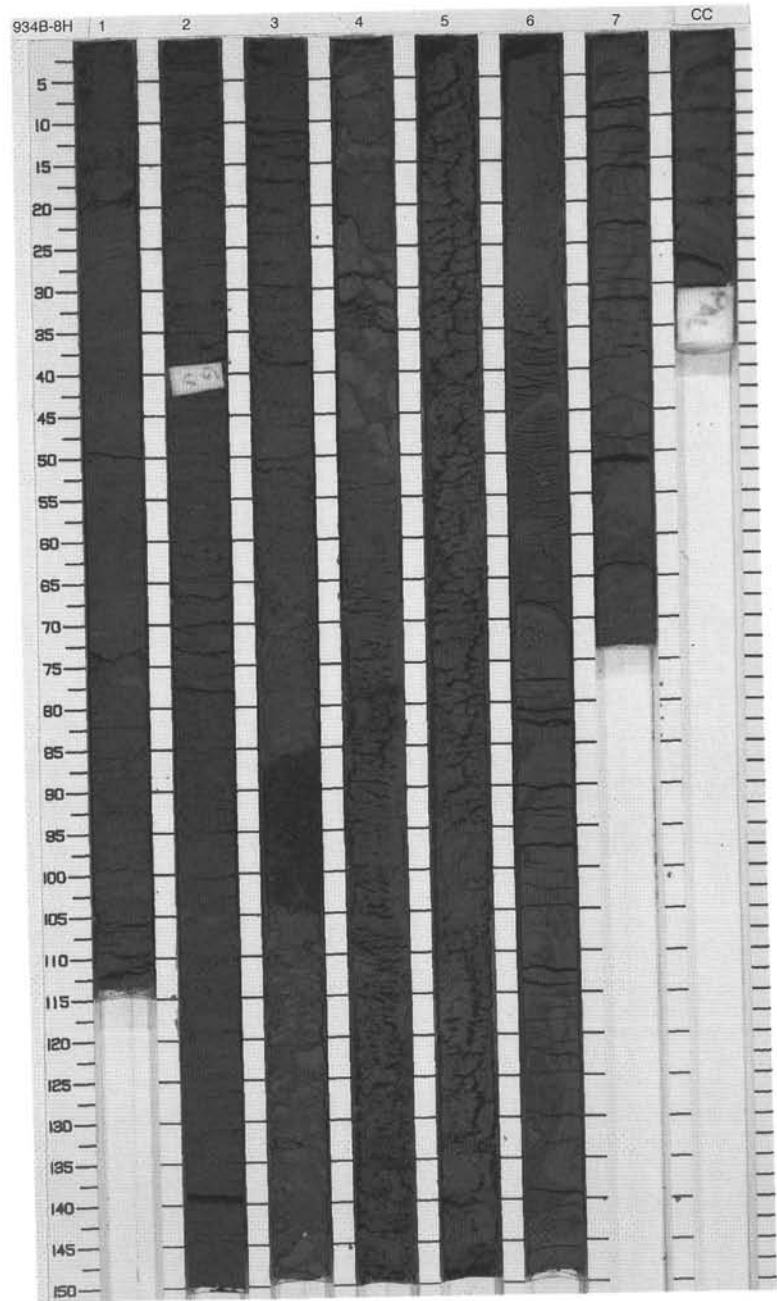
CORED 55.0 - 64.5 mbsf

Meter	Graphic Lith.	Section	Age	Structure	Disturb	Sample	Color	Description
1	[Pattern]	1		2				SILTY CLAY WITH LAMINAE AND BEDS OF SILTY SAND  Major Lithology: The entire core is composed of dark olive gray silty clay with numerous contorted laminae and beds of silty sand.
2	[Pattern]	2		2				
3	[Pattern]	3		2				
4	[Pattern]	3		2				
5	[Pattern]	4	late Pleistocene	2			5Y 3/2	
6	[Pattern]	4		2				
7	[Pattern]	5		2		S		
8	[Pattern]	6		2				
9	[Pattern]	7		2				
10	[Pattern]	CC		2		M		



SITE 934 HOLE B CORE 8H CORED 64.5 - 74.0 mbsf

Meter	Graphic Lith.	Section	Age	Structure	Disturb	Sample	Color	Description
1	[Horizontal lines]	1		✕				<p>SILTY CLAY AND SAND WITH MUD CLASTS</p> <p>Major Lithology:                      Section 1, 0 cm, through Section 2, 150 cm, consists of silty clay with wood fragments disseminated throughout. Section 3, 0-50 cm, consists of silty sand. The interval Section 3, 50 cm, through Section 6, 68 cm, contains fine sand with numerous mud clasts. Section 6, 68 cm, to the bottom of the core consists of silty clay with contorted silt laminae and beds.</p>
2	[Horizontal lines]	2		✕				
3	[Stippled]	3		✕				
4	[Stippled]	4	late Pleistocene	◆			5Y 3/2	
5	[Stippled]	5		◆				
6	[Stippled]	6		◆				
7	[Stippled]	7		◆				
8	[Horizontal lines]	8		◆		S		
9	[Horizontal lines]	9		◆				
CC	[Horizontal lines]	CC				M		

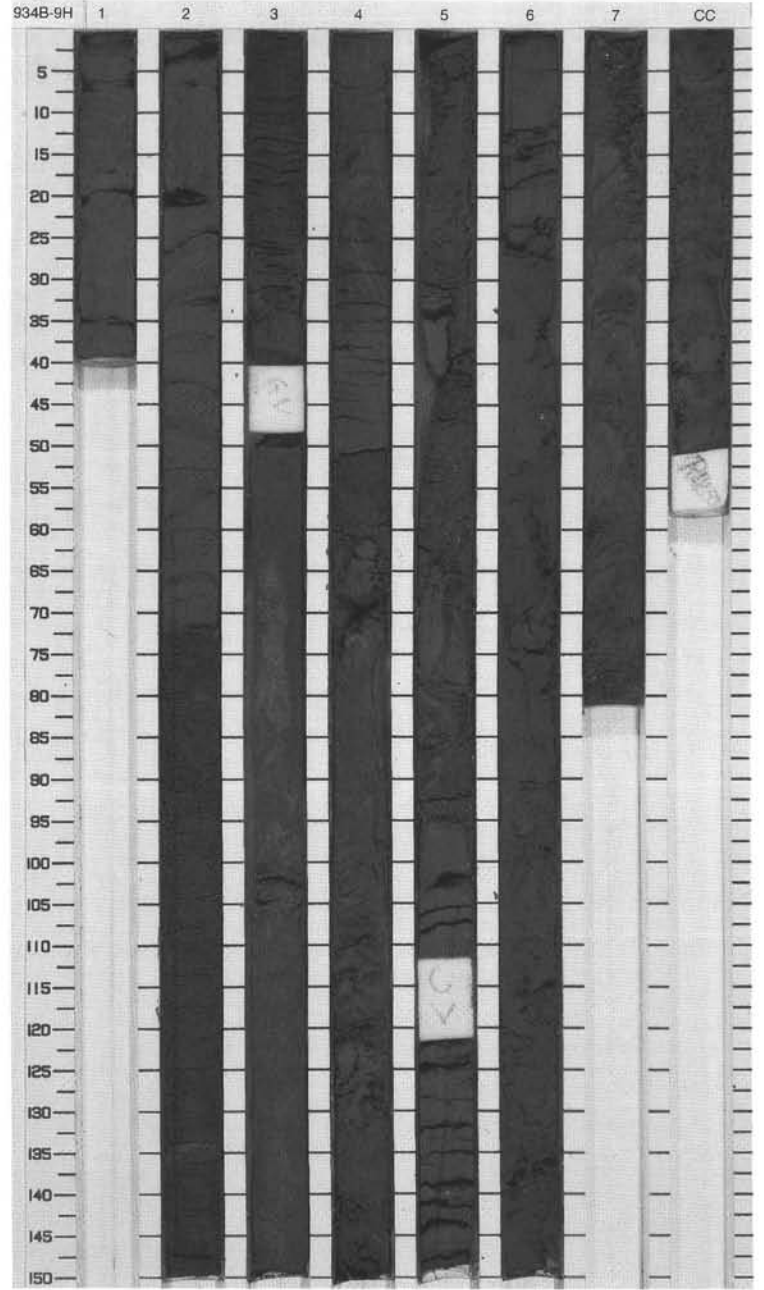




SITE 934 HOLE B CORE 9H

CORED 74.0 - 83.5 mbsf

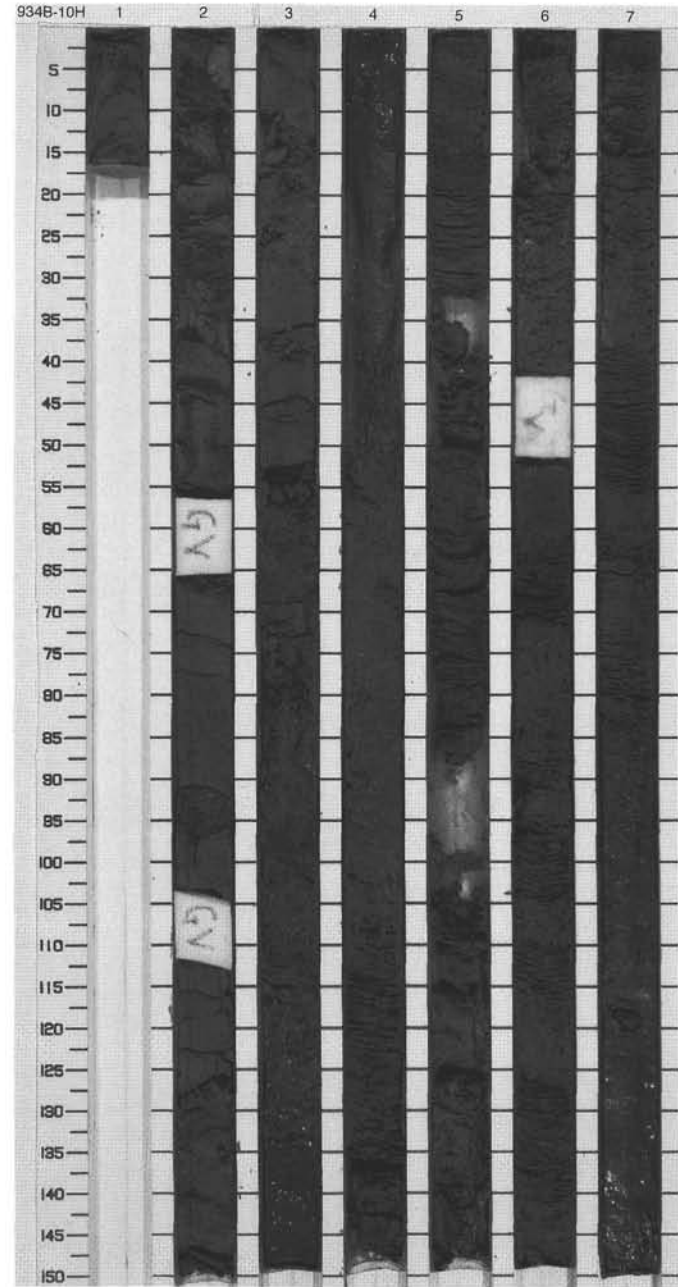
Meter	Graphic Lith.	Section Age	Structure	Disturb	Sample	Color	Description
1	Checkered	1					<p>SAND AND SEDIMENTARY CLASTS</p> <p>Major Lithology: This core consists of an intercalation of fine sand containing mud clasts and intervals of large sedimentary clasts. Some clasts are contorted.</p>
1-2	Stippled	2	◆	---			
2-3	Stippled	3		00000000		5Y 3/2	
3-4	Stippled	4	◆	00000000			
4-5	Stippled	4	◆	00000000			
5-6	Stippled	5	◇	00000000			
6-7	Checkered	5	◆	---		5Y 4/1 To 2.5Y 7/6	
7-8	Stippled	6				5Y 4/1 To 5Y 4/2	
8-9	Checkered	7	◆				
9	CC	CC	◆				



SITE 934 HOLE B CORE 10H

CORED 83.5 - 93.0 mbsf

Meter	Graphic Lith.	Section	Age	Structure	Disturb	Sample	Color	Description
1	Checkerboard pattern	1						MUD CLASTS AND SAND
2	Checkerboard pattern	2		∅			5Y 4/1 To 5Y 6/4	Major Lithology: This core consists of two main lithologies. Section 1, 0 cm, through Section 3, 58 cm, contains numerous mud clasts, in the main, clast supported. The interval Section 3, 58 cm, to the bottom of the core is composed of structureless very fine sand.
3	Dotted pattern	3			OOOOOOOOOOOOOOOO			General Description: Much of the sand in this core has been disturbed during recovery and, as such, contains no primary structure.
4	Dotted pattern	4	late Pleistocene		OOOOOOOOOOOOOOOO			
5	Dotted pattern	5			OOOOOOOOOOOOOOOO			
6	Dotted pattern	6			OOOOOOOOOOOOOOOO		5Y 3/1 To 5Y 4/1	
7	Dotted pattern	7			OOOOOOOOOOOOOOOO			
8	Dotted pattern	8		◆	OOOOOOOOOOOOOOOO			
9	Dotted pattern	9			OOOOOOOOOOOOOOOO	M		



SITE 934 HOLE B CORE 11H

CORED 93.0 - 102.5 mbsf

Meter	Graphic Lith.	Section	Age	Structure	Disturb	Sample	Color	Description
1		1	late Pleistocene				5Y 3/1 To 5Y 3/2	<p><b>SAND AND SILTY CLAY</b></p> <p><b>Major Lithology:</b> This core contains massive fine, medium, and coarse sand, together with silty clay. Within an interval of silty clay (Section 1, 70–150 cm), there are a number of silt laminae.</p> <p><b>General Description:</b> The intervals that are described as "soupy" contain sands which have been disturbed during recovery, and, as such, contain no primary structure.</p>
2		2						
3		3						
4		4						
						M		

