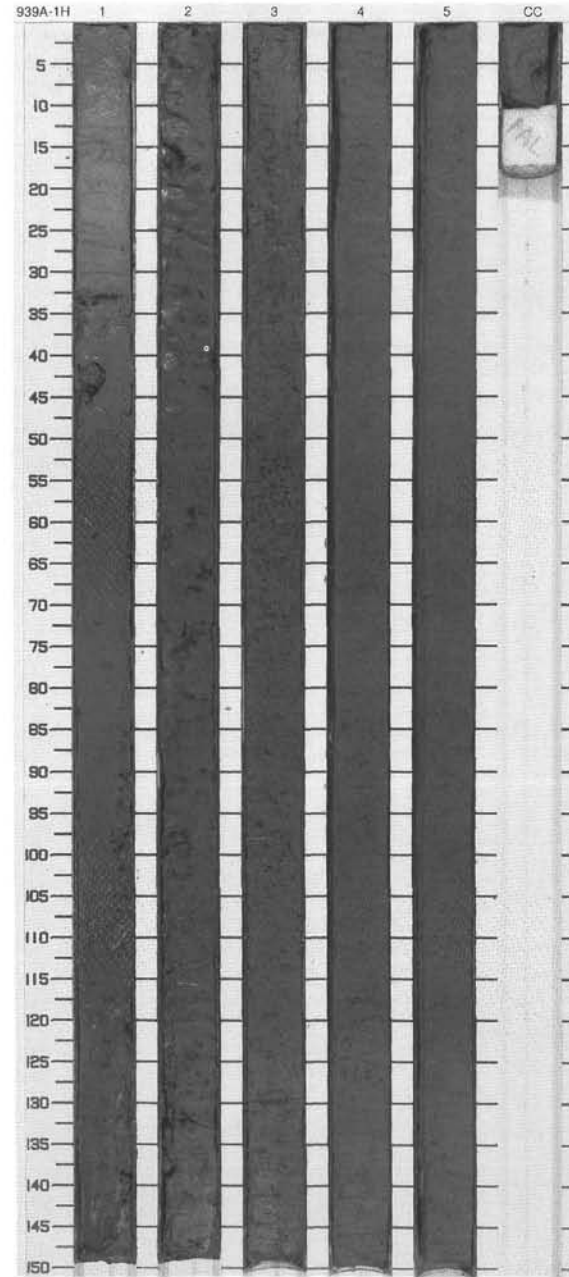


SITE 939 HOLE A CORE 1H

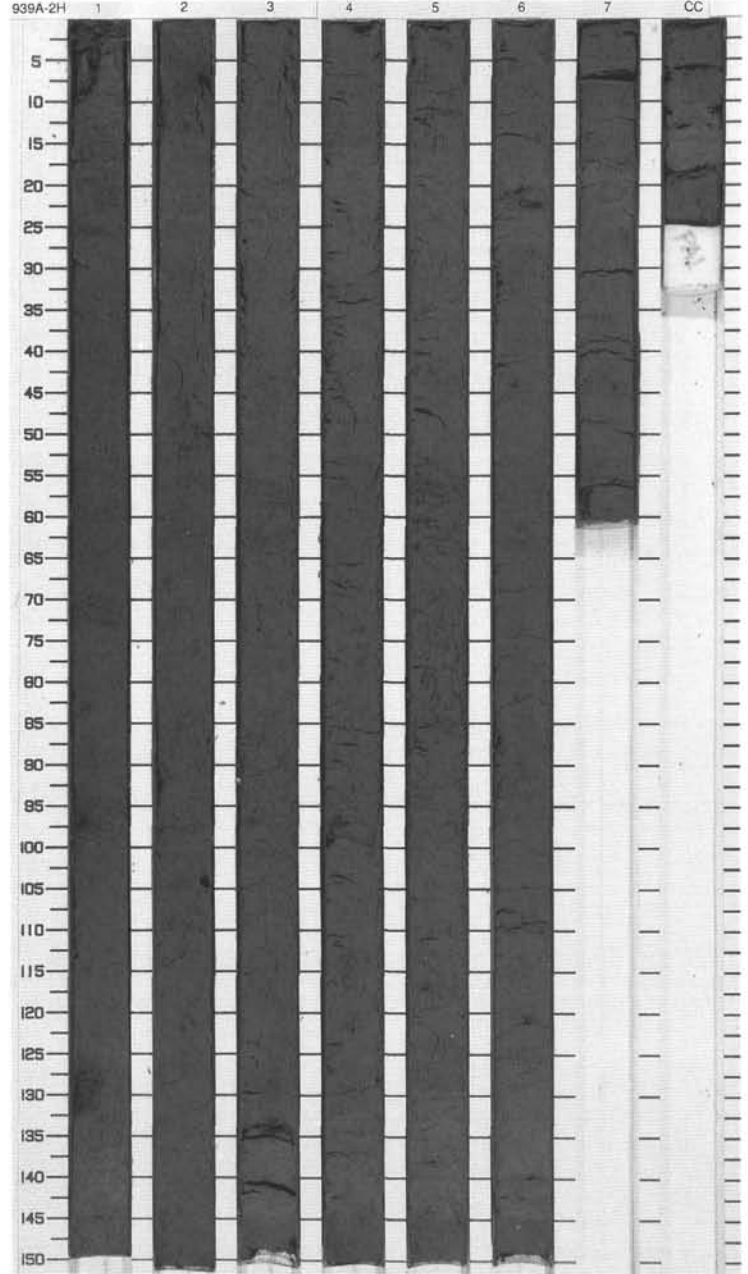
CORED 0.0 - 7.7 mbsf

Meter	Graphic Lith.	Section	Age	Structure	Disturb	Sample	Color	Description
0.0 - 1.0	[Graphic Lithology: Dotted pattern]	1	Holocene	[Structure: Horizontal dashes]			10YR 5/3 To 5Y 4/1	<p>CALCAREOUS CLAY, CLAY and SILTY CLAY</p> <p>Major Lithologies: A brown to dark grayish brown calcareous clay occurs from the top of Section 1 through to 68 cm. A distinctive brown (5Y 2.5/2) indurated iron-rich crust occurs between 32 and 33 cm. Other crusts are found at 14, 18, 24, 26, and 30 cm. From 68 cm to the bottom of Section 4, dark gray clay dominates the lithology. At the base of Section 4, the dark gray clay grades to a dark olive gray silty clay. Iron monosulfide is very abundant in the clays and causes prominent black mottling.</p>
1.0 - 2.0	[Graphic Lithology: Dotted pattern]	2	late Pleistocene	[Structure: Irregular shapes]			5Y 4/1 To N2	
2.0 - 3.0	[Graphic Lithology: Dotted pattern]	3		[Structure: Irregular shapes]				
3.0 - 4.0	[Graphic Lithology: Dotted pattern]	4		[Structure: Irregular shapes]				
4.0 - 5.0	[Graphic Lithology: Dotted pattern]	5		[Structure: Irregular shapes]				
5.0 - 7.7	[Graphic Lithology: Dotted pattern]	CC					5Y 3/2 To N2	



SITE 939 HOLE A CORE 2H CORED 7.7 - 17.2 mbsf

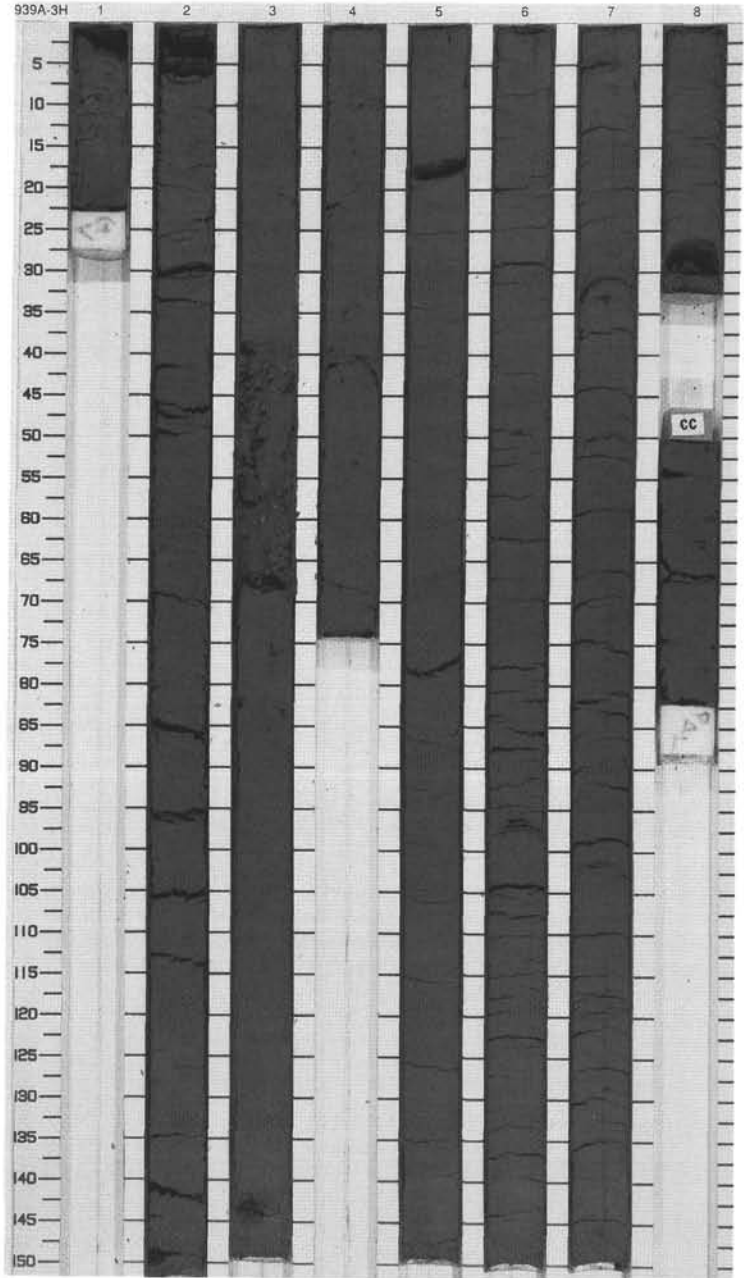
Meter	Graphic Lith.	Section	Age	Structure	Disturb	Sample	Color	Description
1	[Hatched pattern]	1	late Pleistocene	~ ~ ~ ~ ~ ~ ~			5Y 3/2	<p>SILTY CLAY</p> <p>Major Lithology: The sediment in this core consists of a dark olive gray silty clay. Iron monosulfide is abundant throughout the core, occurring as micronodules, and is disseminated throughout the core.</p>
2	[Hatched pattern]	2		~ ~ ~ ~ ~ ~ ~			5Y 3/1	
3	[Hatched pattern]	3		~ ~ ~ ~ ~ ~ ~				
4	[Hatched pattern]	4		~ ~ ~ ~ ~ ~ ~				
5	[Hatched pattern]	5		~ ~ ~ ~ ~ ~ ~				
6	[Hatched pattern]	6		~ ~ ~ ~ ~ ~ ~				
7	[Hatched pattern]	7		~ ~ ~ ~ ~ ~ ~				
CC	[Hatched pattern]	CC		~ ~ ~ ~ ~ ~ ~		M		



SITE 939 HOLE A CORE 3H

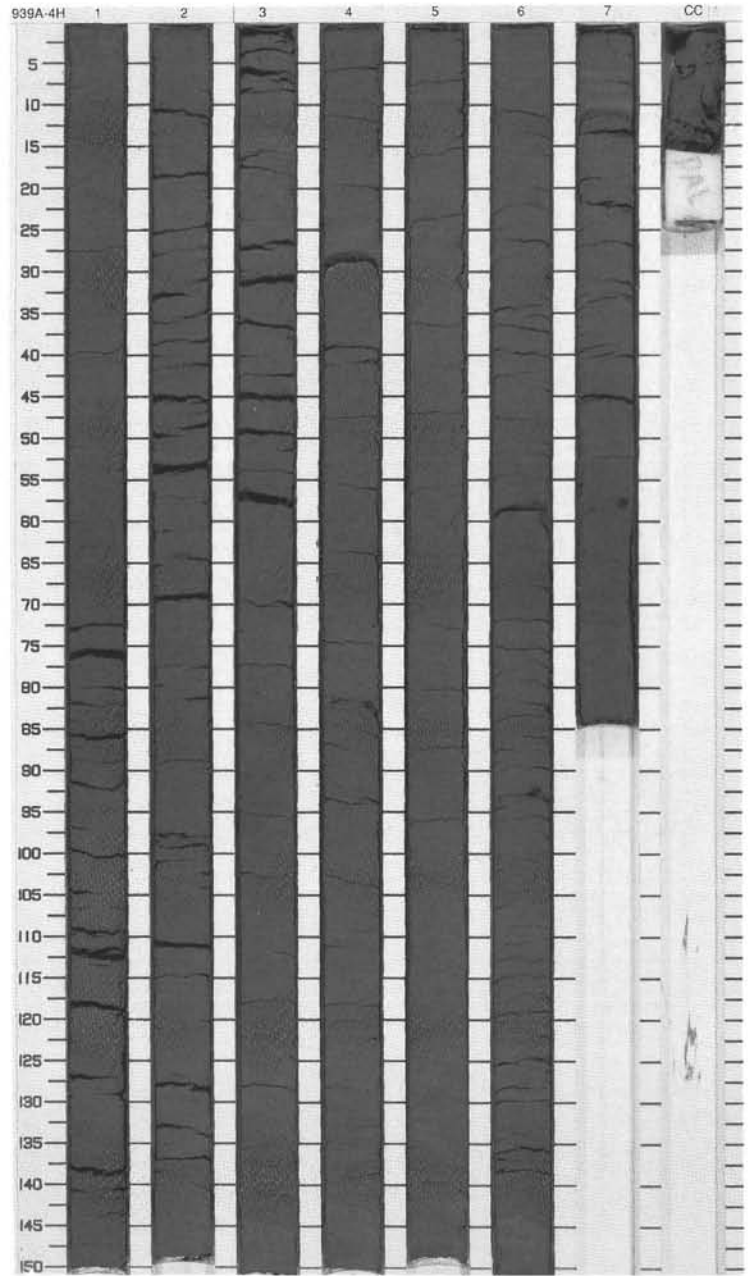
CORED 17.2 - 26.7 mbsf

Meter	Graphic Lith.	Section Age	Structure	Disturb	Sample	Color	Description
1	[Hatched pattern]	1	~				<p>SILTY CLAY</p> <p>Major Lithology: This core consists of very dark gray silty clay. Micronodules of iron monosulfide are abundant throughout.</p>
1	[Hatched pattern]	2	~				
2	[Hatched pattern]	3	~	oo			
3	[Hatched pattern]	4	~				
4	[Hatched pattern]	5	~			5Y 3/1	
5	[Hatched pattern]	6	~				
6	[Hatched pattern]	7	~				
7	[Hatched pattern]	8	~				
8	[Hatched pattern]	CC	~				
9	[Hatched pattern]		~			M	



SITE 939 HOLE A CORE 4H CORED 26.7 - 36.2 mbsf

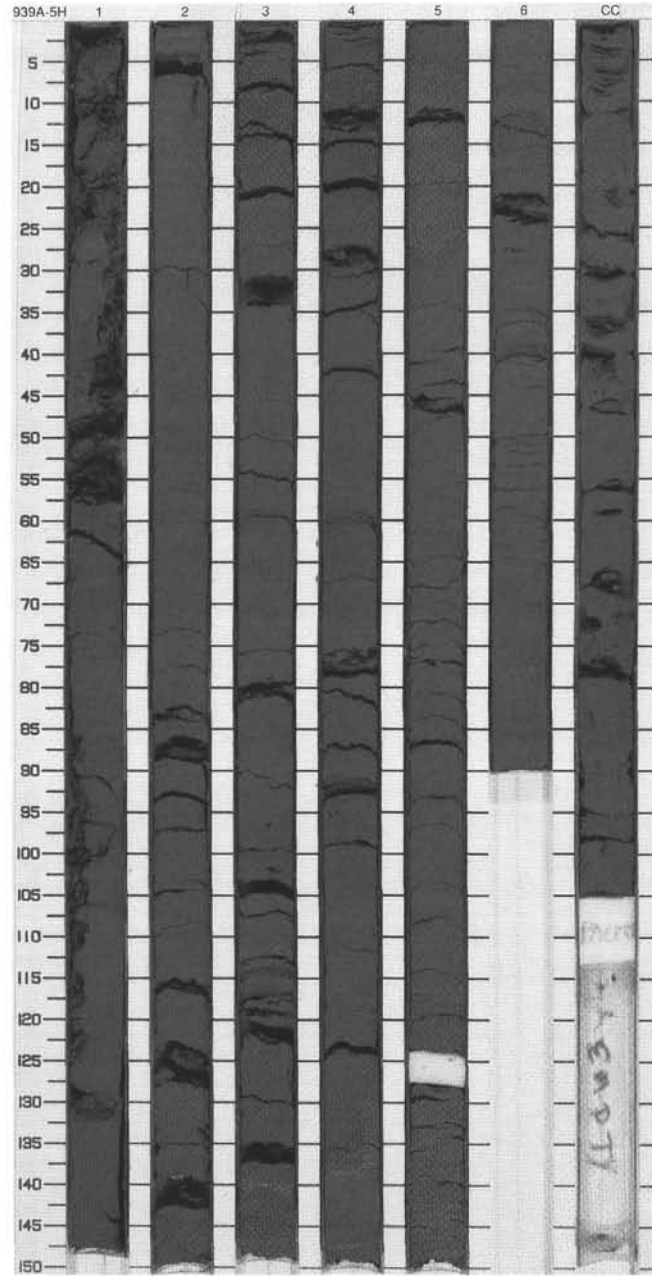
Meter	Graphic Lith.	Section	Age	Structure	Disturb	Sample	Color	Description
1	[Hatched pattern]	1	late Pleistocene	}}			5Y 4/1	<p>SILTY CLAY</p> <p>Major Lithology: This core consists of faintly black (N2) color-banded and moderately bioturbated dark gray silty clay.</p>
2	[Hatched pattern]	2		}}				
3	[Hatched pattern]	3		}}				
4	[Hatched pattern]	4		}}				
5	[Hatched pattern]	5		}}				
6	[Hatched pattern]	6		}}				
7	[Hatched pattern]	7		}}				
8	[Hatched pattern]	8		}}				
9	[Hatched pattern]	9		}}				
10	[Hatched pattern]	10		}}				
		CC				M		



SITE 939 HOLE A CORE 5H

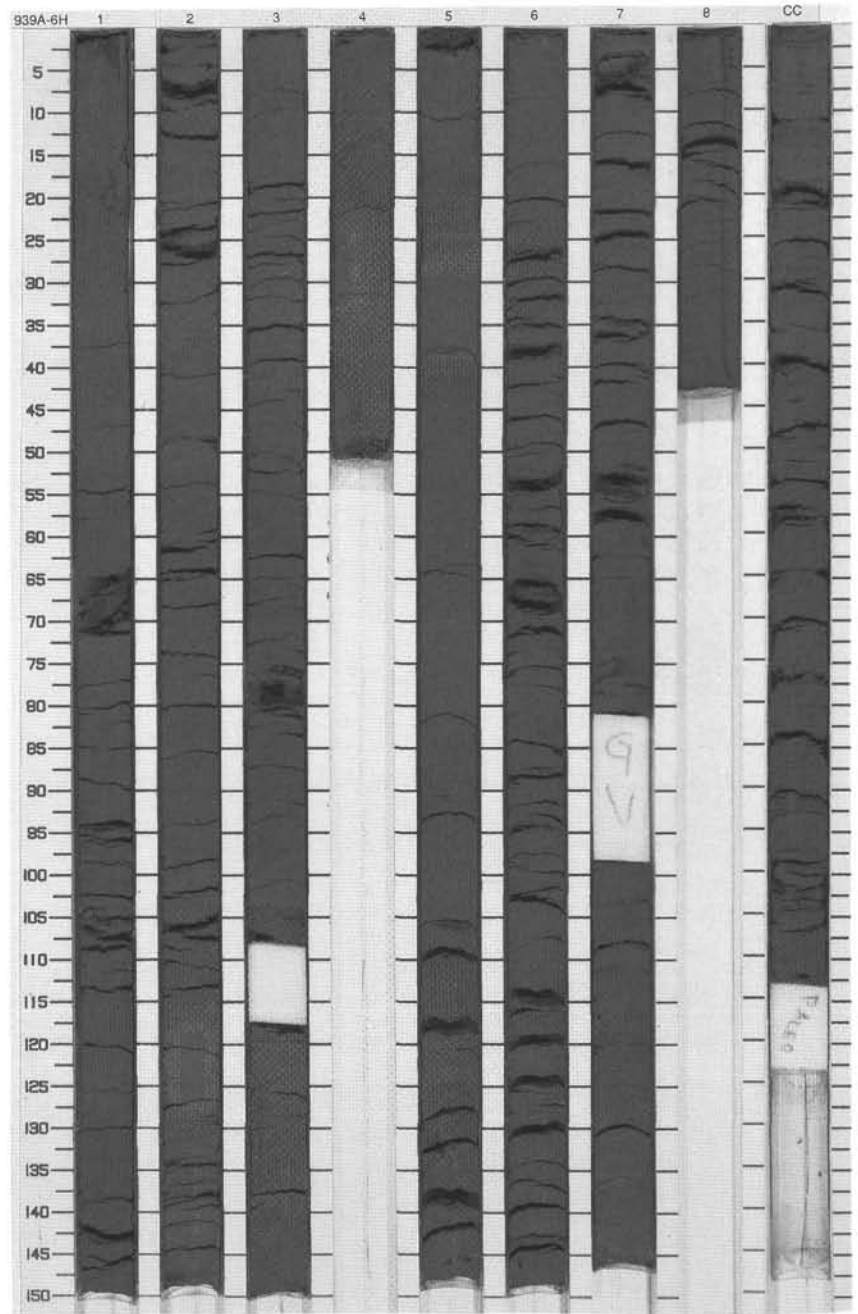
CORED 36.2 - 45.7 mbsf

Meter	Graphic Lith.	Section	Age	Structure	Disturb	Sample	Color	Description
1	[Hatched pattern]	1		}}	www			<p>SILTY CLAY</p> <p>Major Lithology: This core consists of faintly black (N2) color-banded and moderately bioturbated dark gray silty clay.</p>
2	[Hatched pattern]	2		}}				
3	[Hatched pattern]	3		}}				
4	[Hatched pattern]	3		}}				
5	[Hatched pattern]	4	late Pleistocene	}}		5Y 4/1		
6	[Hatched pattern]	4		}}				
7	[Hatched pattern]	5		}}				
8	[Hatched pattern]	6		}}				
9	[Hatched pattern]	CC		}}	www			
						M		



SITE 939 HOLE A CORE 6H CORED 45.7 - 55.2 mbsf

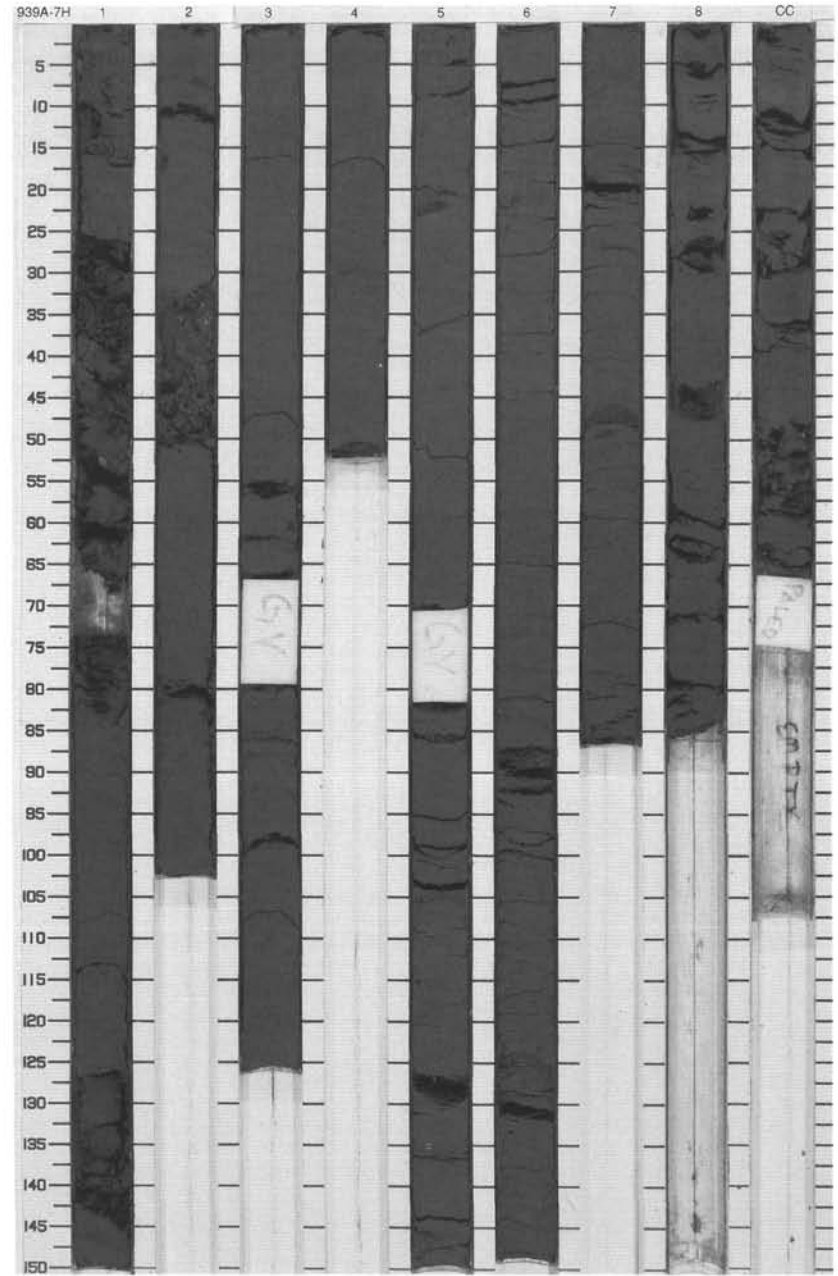
Meter	Graphic Lith.	Section	Age	Structure	Disturb	Sample	Color	Description
1	[Hatched]	1		⋈ 	W			<p>SILTY CLAY</p> <p>Major Lithology: This core consists of faintly black (N2) color-banded and moderately bioturbated dark gray silty clay.</p>
2	[Hatched]	2		⋈ 				
3	[Hatched]	3		⋈ 				
4	[Hatched]	4		⋈ 				
5	[Hatched]	4		⋈ ○				
6	[Hatched]	5	late Pleistocene	⋈ 			5Y 4/1	
7	[Hatched]	6		⋈ 				
8	[Hatched]	6		⋈ 				
9	[Hatched]	7		⋈ 				
10	[Hatched]	8		⋈ 				
11	[Hatched]	CC		⋈ 			M	



SITE 939 HOLE A CORE 7H

CORED 55.2 - 64.7 mbsf

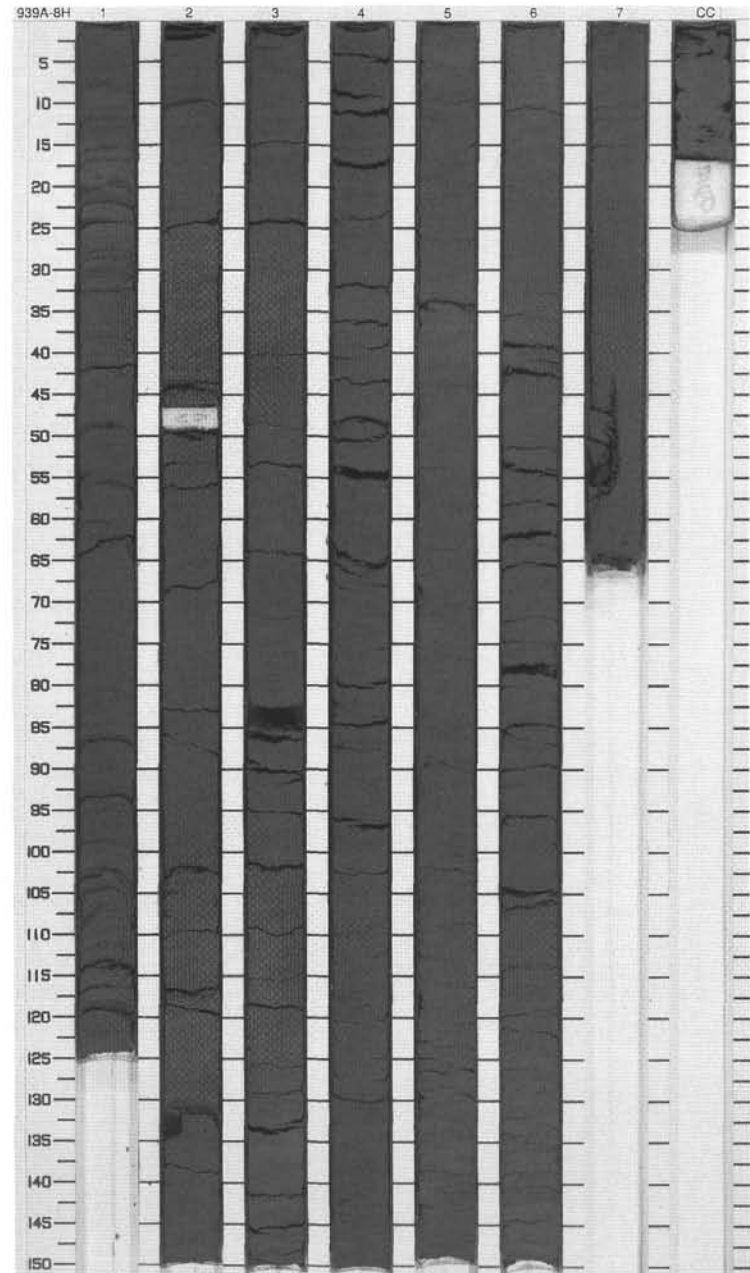
Meter	Graphic Lith.	Section	Age	Structure	Disturb	Sample	Color	Description
1	[Hatched pattern]	1	late Pleistocene	}}	www		5Y 4/1	<p>SILTY CLAY</p> <p>Major Lithology: This core consists of moderately bioturbated dark gray silty clay.</p> <p>General Description: Some intervals of this core have been disturbed.</p>
2	[Hatched pattern]	2		}}				
3	[Hatched pattern]	3		}}				
4	[Hatched pattern]	4		}}				
5	[Hatched pattern]	5		}}				
6	[Hatched pattern]	6		}}				
7	[Hatched pattern]	7		}}				
8	[Hatched pattern]	8		}}	www			
9	[Hatched pattern]	9		}}	www			
		CC		}}		M		



SITE 939 HOLE A CORE 8H

CORED 64.7 - 74.2 mbsf

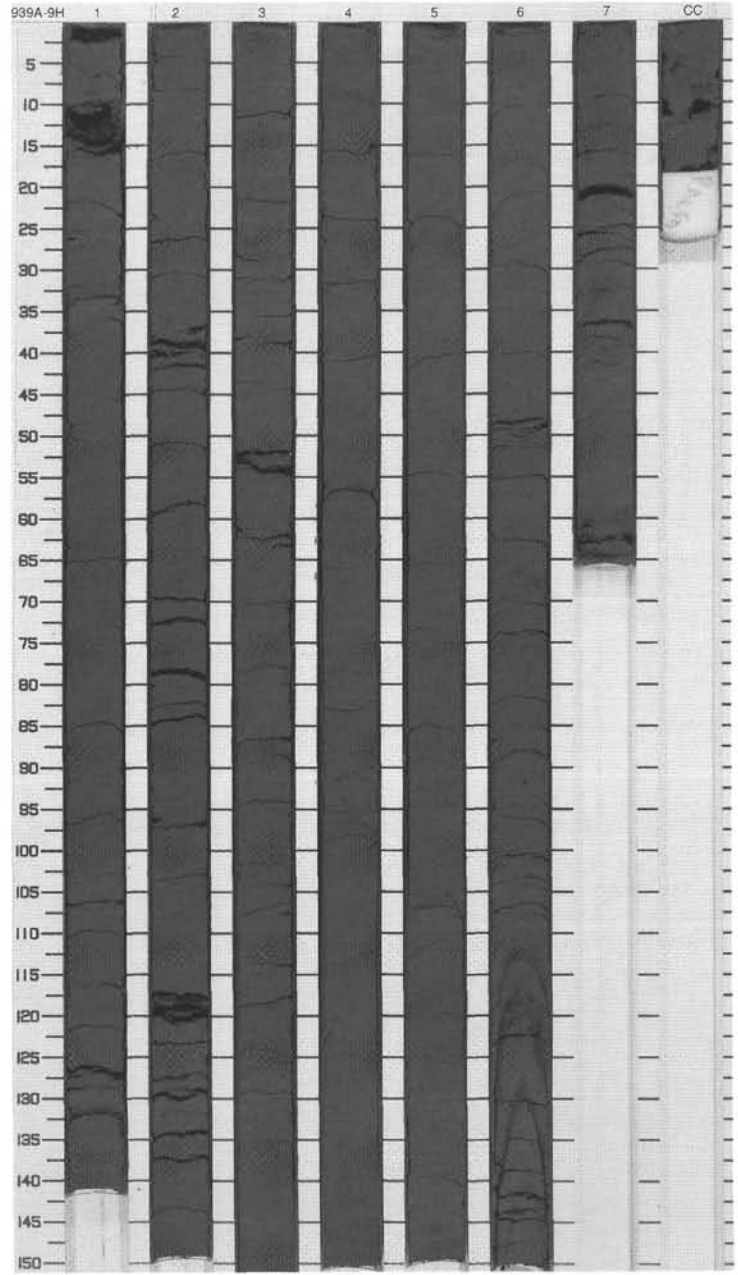
Meter	Graphic Lith.	Section	Age	Structure	Disturb	Sample	Color	Description
1		1						SILTY CLAY Major Lithology: This core consists of moderately bioturbated and mottled dark gray silty clay. Section 1 contains a fault between 49 and 60 cm.
2		2						
3		3						
4		4	late Pleistocene				5Y 4/1	
5		5						
6		6						
7		7						
8		CC					M	



SITE 939 HOLE A CORE 9H

CORED 74.2 - 83.7 mbsf

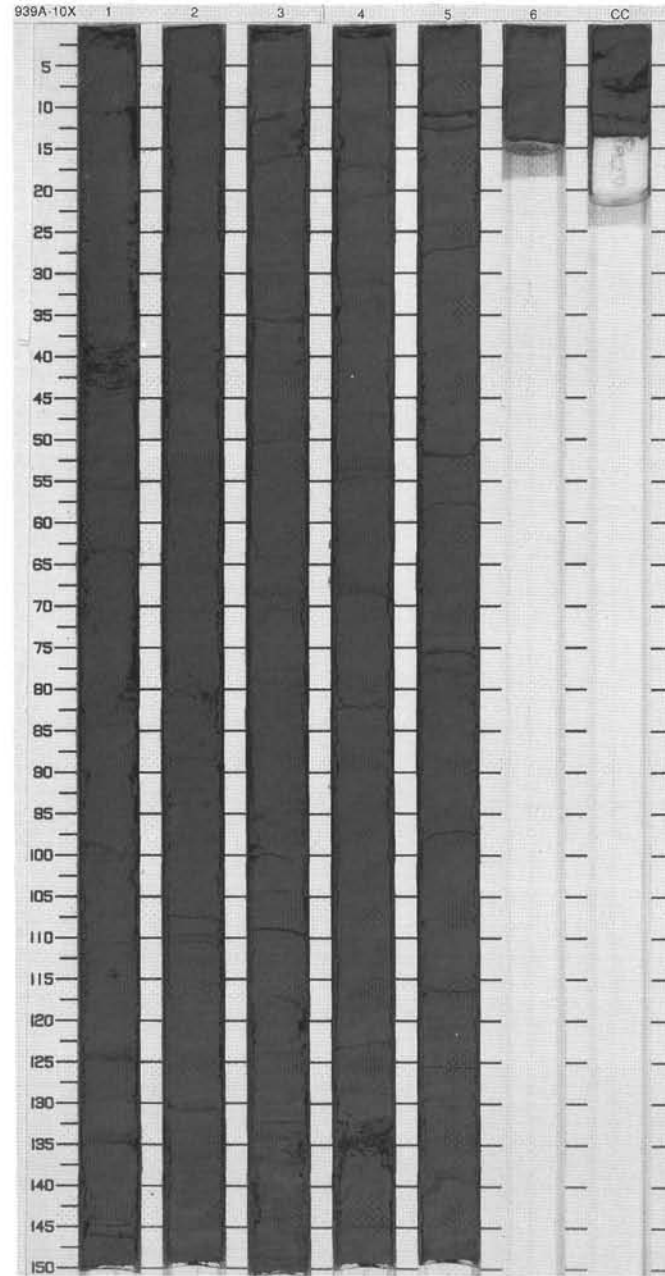
Meter	Graphic Lith.	Section	Age	Structure	Disturb	Sample	Color	Description
1	[Hatched pattern]	1		}}				<p>SILTY CLAY</p> <p>Major Lithology: This core consists of moderately to heavily bioturbated dark gray silty clay.</p> <p>General Description: Sections 7 and the CC contain flow-in structures which have been highlighted by the presence of distorted silt beds.</p>
2	[Hatched pattern]	2		}}				
3	[Hatched pattern]	3		}}				
4	[Hatched pattern]	3		}}				
5	[Hatched pattern]	4	late Pleistocene	}}			5Y 4/1	
6	[Hatched pattern]	4		}}				
7	[Hatched pattern]	5		}}				
8	[Hatched pattern]	6		}}				
9	[Hatched pattern]	7		}}				
	[Hatched pattern]	CC		}}	www	M		



SITE 939 HOLE A CORE 10X

CORED 83.7 - 93.2 mbsf

Meter	Graphic Lith.	Section	Age	Structure	Disturb	Sample	Color	Description
1	[Hatched pattern]	1	late Pleistocene	}}			5Y 4/1	<p>SILTY CLAY</p> <p>Major Lithology: This core consists of moderately to heavily bioturbated dark gray silty clay. Silt laminae increase in frequency downcore.</p>
2	[Hatched pattern]	2		}}				
3	[Hatched pattern]	3		}}				
4	[Hatched pattern]	4		}}				
5	[Hatched pattern]	4		}}				
6	[Hatched pattern]	5		}}				
7	[Hatched pattern]	5		}}				
	[Hatched pattern]	B CC		☼		M		



SITE 939 HOLE A CORE 11X

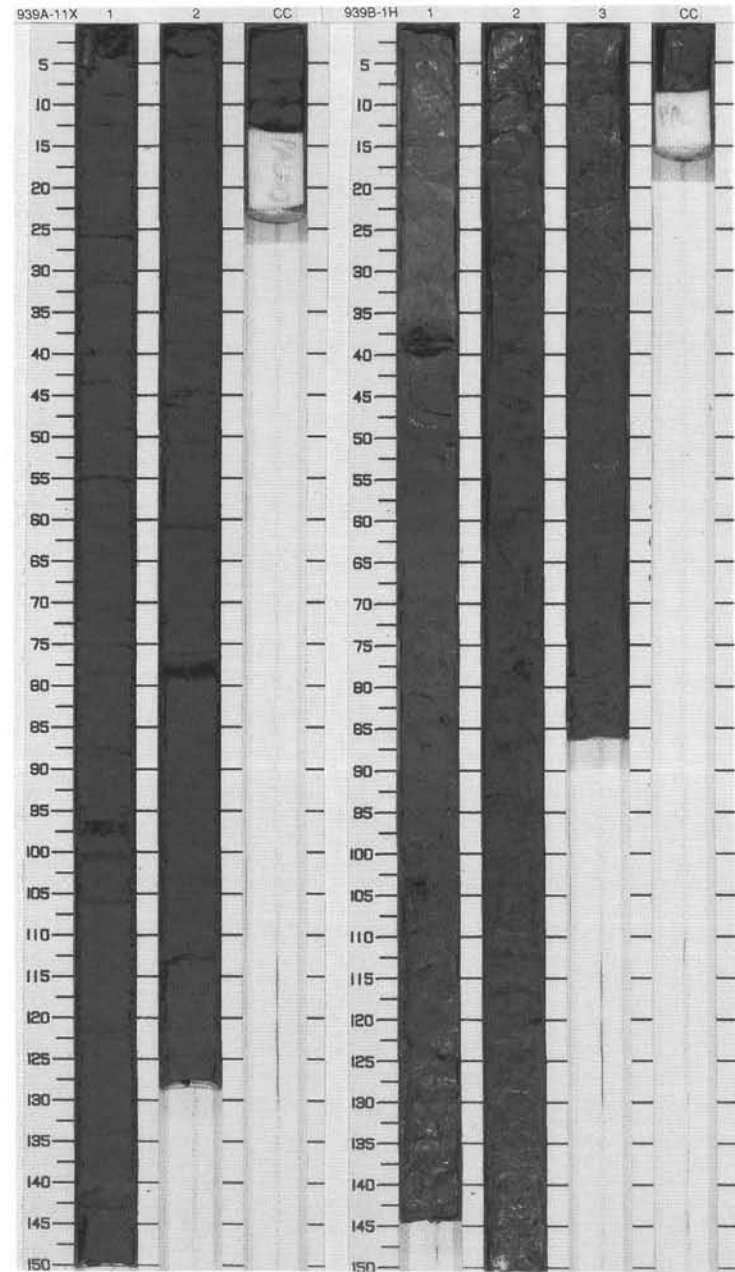
CORED 93.2 - 102.7 mbsf

Meter	Graphic Lith.	Section	Age	Structure	Disturb	Sample	Color	Description
1	[Hatched pattern]	1	late Pleistocene	—			5Y 4/1	<p>SILTY CLAY</p> <p>Major Lithology: This core consists of moderately bioturbated dark gray silty clay.</p>
2	[Hatched pattern]	2		}}				
3	[Hatched pattern]	CC		}}		M		

SITE 939 HOLE B CORE 1H

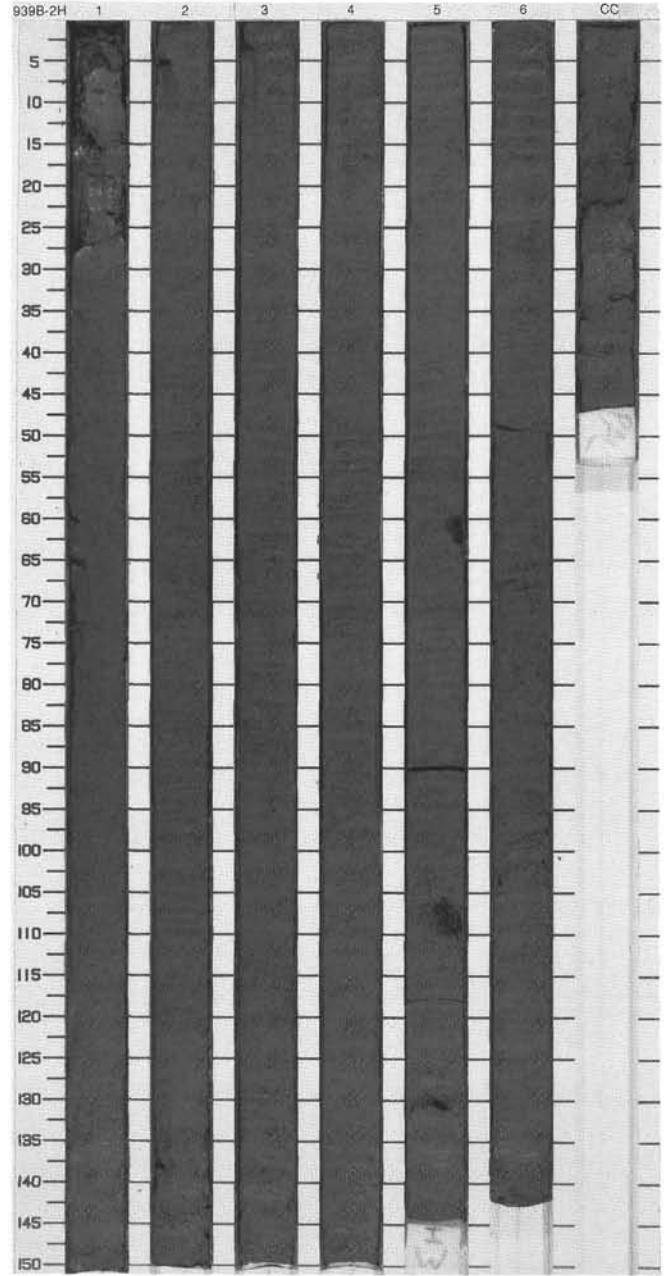
CORED 0.0 - 4.0 mbsf

Meter	Graphic Lith.	Section	Age	Structure	Disturb	Sample	Color	Description
1	[Dotted pattern]	1	Holocene	—			10YR 5/3 To 5Y 4/1	<p>CALCAREOUS CLAY AND CLAY</p> <p>Major Lithology: The top 39 cm of this core consists of brown to olive brown calcareous clay. A dark reddish brown (5YR 3/2) indurated diagenetic iron-rich crust occurs between 38–39 cm. Below the crust to the bottom of the core, gray clay grades in color to dark gray clay.</p>
2	[Dotted pattern]	2	late Pleistocene	}}			5Y 4/1	
3	[Dotted pattern]	3		}}				
4	[Dotted pattern]	CC		}}		M		

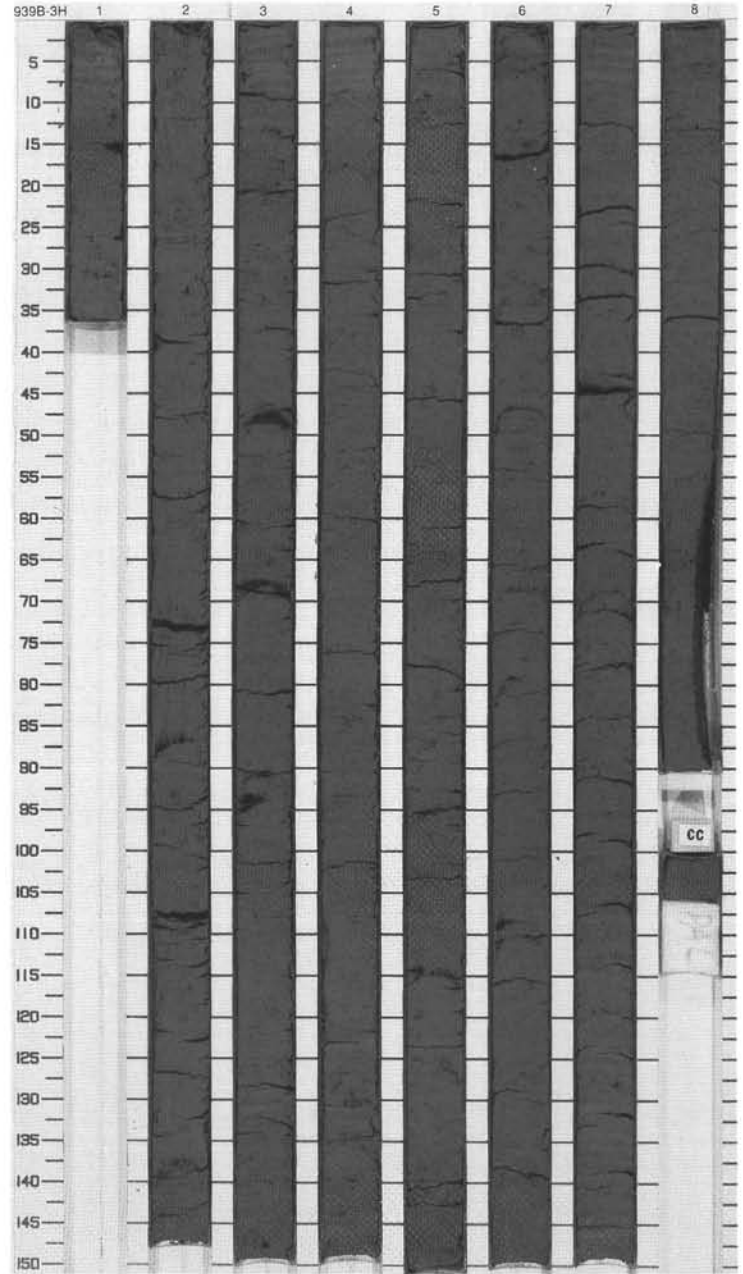


SITE 939 HOLE B CORE 2H CORED 4.0 - 13.5 mbsf

Meter	Graphic Lith.	Section	Age	Structure	Disturb	Sample	Color	Description
1	[Hatched pattern]	1	late Pleistocene	☼ ☼ ☼				<p>SILTY CLAY</p> <p>Major Lithology: This core consists of heavily bioturbated and mottled dark gray silty clay.</p>
2	[Hatched pattern]	2		☼ ☼				
3	[Hatched pattern]	3		☼ ☼				
4	[Hatched pattern]	4		☼ ☼			5Y 4/1	
5	[Hatched pattern]	5		☼ ☼				
6	[Hatched pattern]	6		☼ ☼				
7	[Hatched pattern]	7		☼ ☼				
8	[Hatched pattern]	8		☼ ☼			I	
9	[Hatched pattern]	9		☼ ☼				
	CC	CC		☼			M	



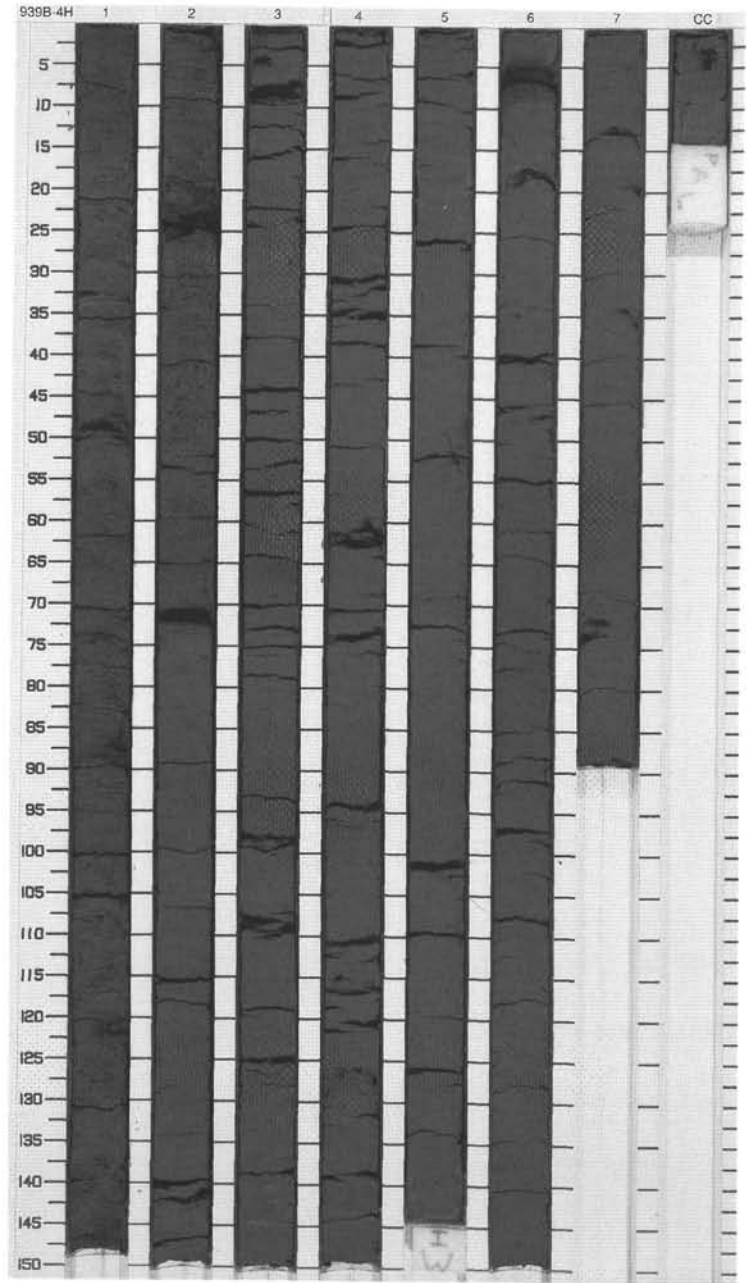
Meter	Graphic Lith.	Section	Age	Structure	Disturb	Sample	Color	Description
1	[Hatched pattern]	1		[Symbol]				<p>SILTY CLAY</p> <p>Major Lithology: A dark gray silty clay is the sediment in this core. Black (N2) color mottling and banding is associated with the occurrence of iron monosulfide, which is disseminated or scattered as micronodules throughout the core.</p>
2	[Hatched pattern]	2		[Symbol]				
3	[Hatched pattern]	3		[Symbol]				
4	[Hatched pattern]	4		[Symbol]				
5	[Hatched pattern]	5	late Pleistocene	[Symbol]			5Y 4/1	
6	[Hatched pattern]			[Symbol]		I		
7	[Hatched pattern]	6		[Symbol]				
8	[Hatched pattern]	7		[Symbol]				
9	[Hatched pattern]	8		[Symbol]				
10	[Hatched pattern]			[Symbol]				
	[Symbol]					M		



SITE 939 HOLE B CORE 4H

CORED 23.0 - 32.5 mbsf

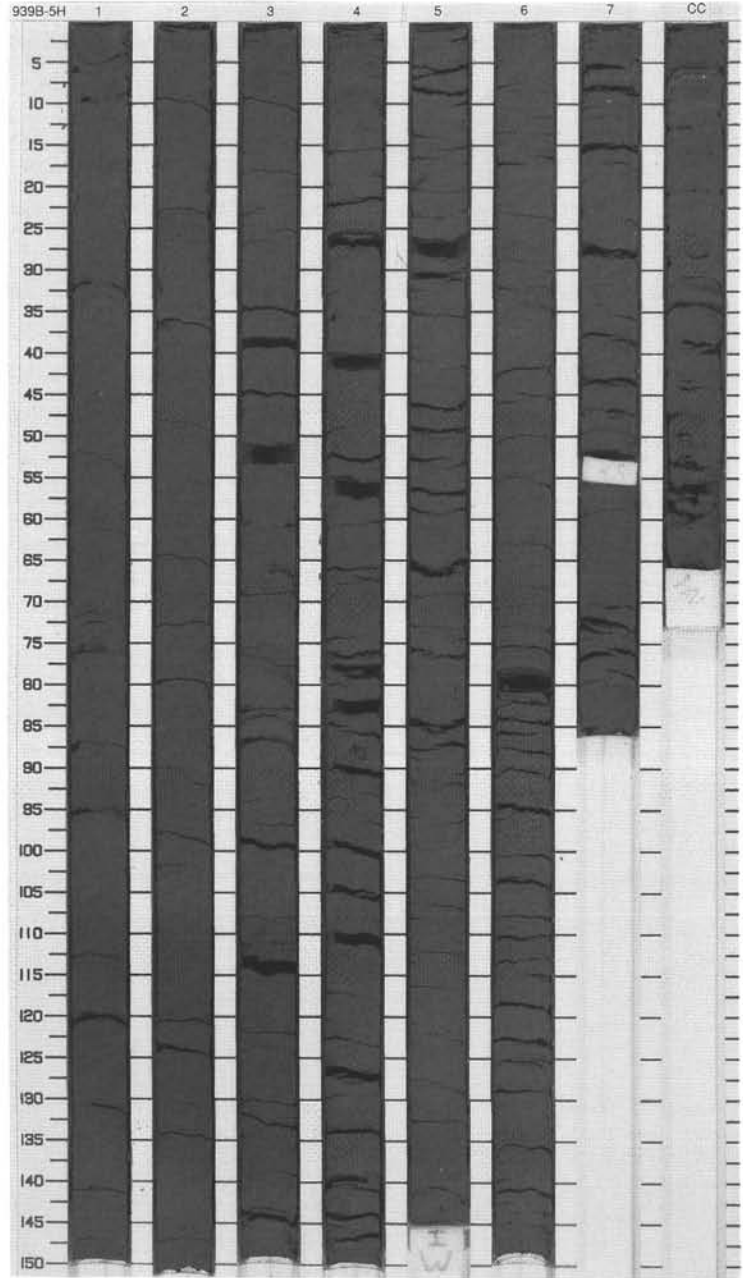
Meter	Graphic Lith.	Section	Age	Structure	Disturb	Sample	Color	Description
1		1						SILTY CLAY Major Lithology: The core consists of dark gray silty clay which contains a few silt laminae. Iron monosulfide is abundant, either concentrated within burrows or forming micronodules.
2		2						
3		3						
4		3						
5		4	late Pleistocene				5Y 4/1	
6		5						
7		5						
8		6						
9		7						
10		CC					M	



SITE 939 HOLE B CORE 5H

CORED 32.5 - 42.0 mbsf

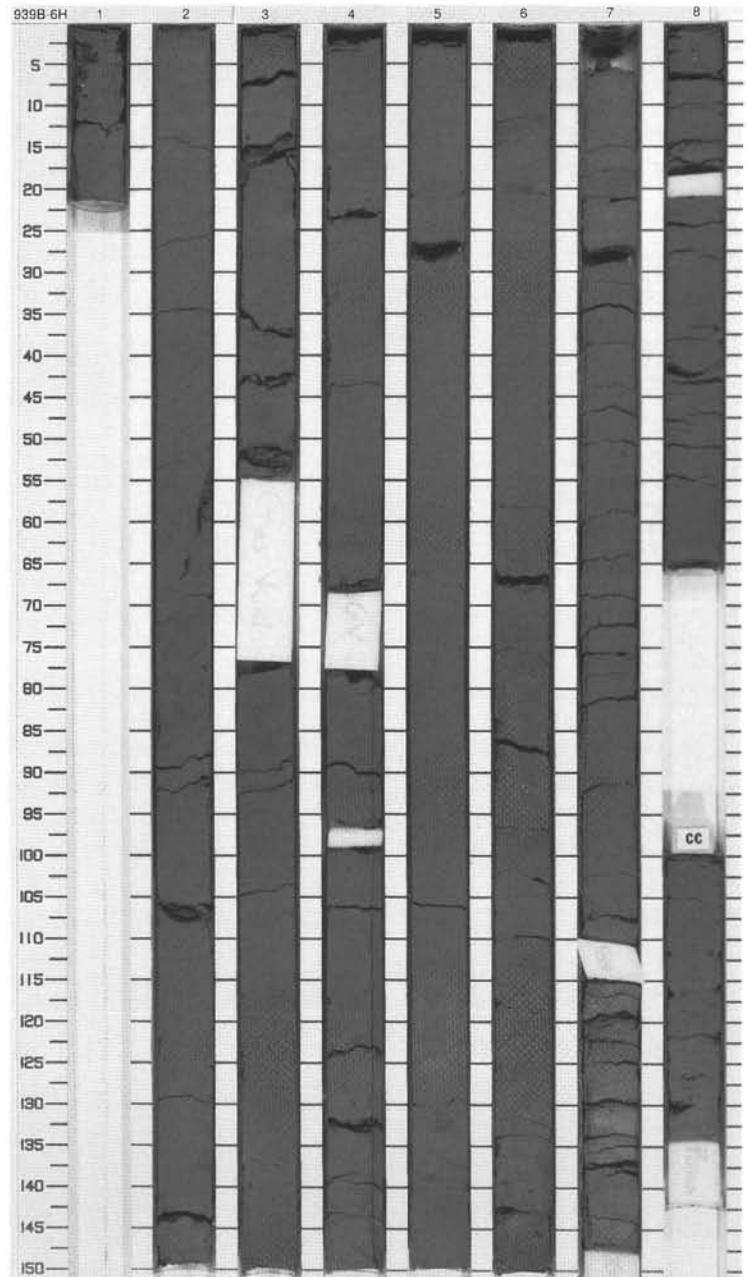
Meter	Graphic Lith.	Section	Age	Structure	Disturb	Sample	Color	Description
1	[Hatched pattern]	1		[Symbol]				<p>SILTY CLAY</p> <p>Major Lithology: The core consists of dark gray silty clay which contains a few silt laminae. Iron monosulfide is abundant, either concentrated as micronodules in silt laminae or disseminated within burrows, causing black (N2) mottling and faint color banding.</p>
2	[Hatched pattern]	2		[Symbol]				
3	[Hatched pattern]	3		[Symbol]				
4	[Hatched pattern]	4		[Symbol]				
5	[Hatched pattern]	4	late Pleistocene	[Symbol]			5Y 4/1	
6	[Hatched pattern]	5		[Symbol]				
7	[Hatched pattern]	6		[Symbol]				
8	[Hatched pattern]	7		[Symbol]				
9	[Hatched pattern]	7		[Symbol]				
10	[Hatched pattern]	CC		[Symbol]				
						M		



SITE 939 HOLE B CORE 6H

CORED 42.0 - 51.5 mbsf

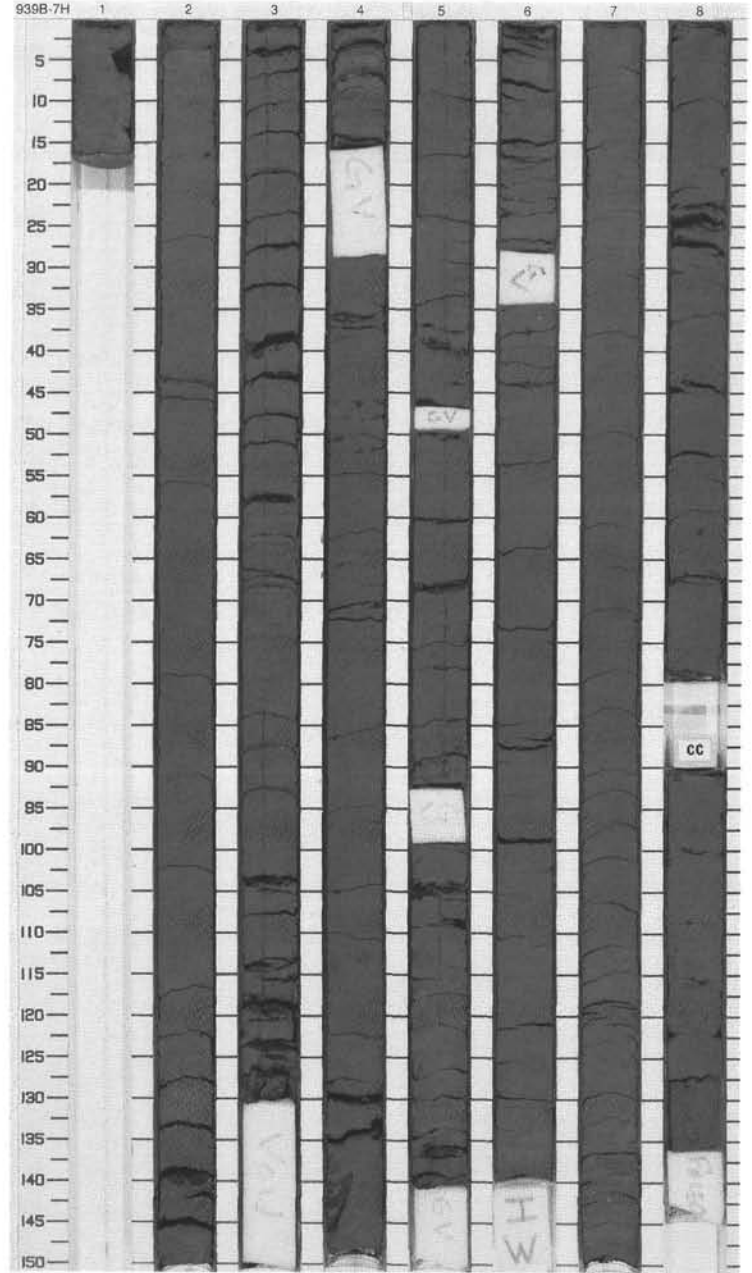
Meter	Graphic Lith.	Section	Age	Structure	Disturb	Sample	Color	Description
1	[Hatched pattern]	1		}}				<p>SILTY CLAY</p> <p>Major Lithology: The sediment in this core consists of a dark olive gray silty clay. Silt laminae are scattered throughout the core. Disrupted bedding of silt laminae indicates drilling disturbances. Iron monosulfide is very abundant, either concentrated in laminae and burrows or disseminated in the clay.</p>
1	[Hatched pattern]	2		}}				
2	[Hatched pattern]			}}	www			
2	[Hatched pattern]	3		}}				
3	[Hatched pattern]			}}				
3	[Hatched pattern]	4		}}				
4	[Hatched pattern]			}}				
5	[Hatched pattern]	5	late Pleistocene	}}			5Y 3/2	
6	[Hatched pattern]			}}				
7	[Hatched pattern]	6		}}				
8	[Hatched pattern]			}}				
8	[Hatched pattern]	7		}}				
9	[Hatched pattern]			}}				
10	[Hatched pattern]	8		}}				
	[Hatched pattern]	CC		}}				
						M		



SITE 939 HOLE B CORE 7H

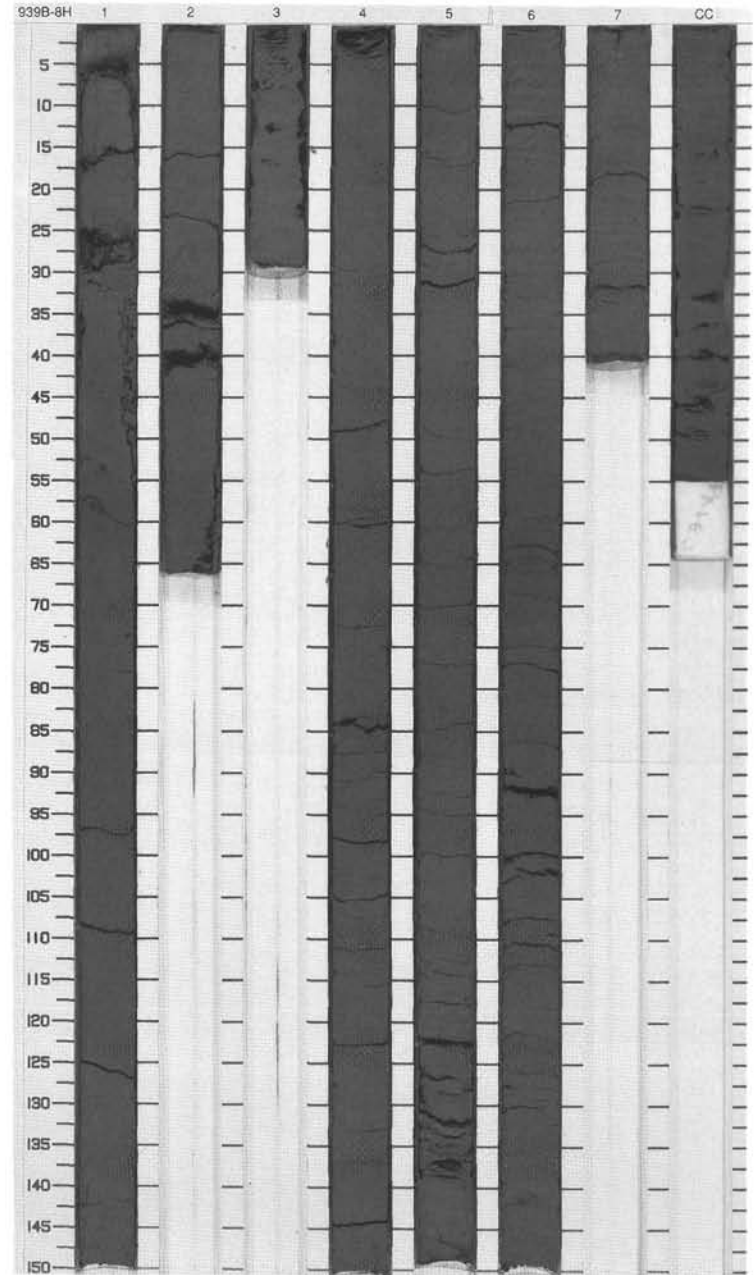
CORED 51.5 - 61.0 mbsf

Meter	Graphic Lith.	Section	Age	Structure	Disturb	Sample	Color	Description
1	[Hatched pattern]	1		[Symbol]				<p>SILTY CLAY WITH SILT LAMINAE</p> <p>Major Lithology: The very dark gray to dark olive gray silty clay in this core contains frequent silt laminae in the interval between Section 3, 30 cm, and Section 4, 70 cm. Iron monosulfide occurs only concentrated in burrows and is less common from Section 4 through to CC.</p>
2	[Hatched pattern]	2		[Symbol]				
3	[Hatched pattern]	3		[Symbol]				
4	[Hatched pattern]	4		[Symbol]				
5	[Hatched pattern]	5	late Pleistocene	[Symbol]			5Y 3/1 To 5Y 3/2	
6	[Hatched pattern]	5		[Symbol]				
7	[Hatched pattern]	6		[Symbol]				
8	[Hatched pattern]	6		[Symbol]				
9	[Hatched pattern]	7		[Symbol]				
10	[Hatched pattern]	8		[Symbol]				
	[Hatched pattern]	CC		[Symbol]				
						M		



SITE 939 HOLE B CORE 8H CORED 61.0 - 70.5 mbsf

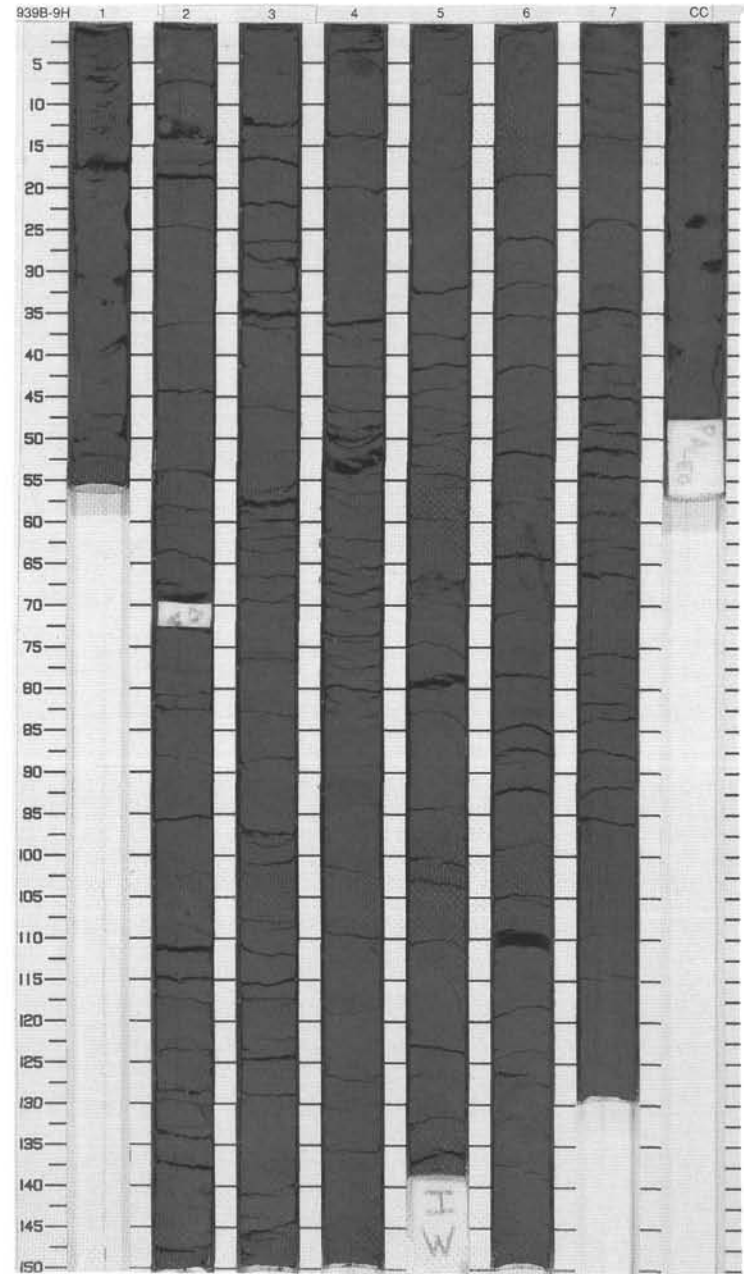
Meter	Graphic Lith.	Section	Age	Structure	Disturb	Sample	Color	Description
1	[Hatched pattern]	1		[Horizontal line]	[Wavy line]			<p>SILTY CLAY WITH SILT LAMINAE AND BEDS</p> <p>Major Lithology: A very dark gray to dark olive gray silty clay is intercalated with several silt laminae and thin beds in this core. Black (N2) staining and color banding is common throughout the core, indicating the presence of iron monosulfide.</p> <p>General Description: Contorted bedding of the silty clay and disrupted silt layers indicate heavy drilling disturbance.</p>
2	[Hatched pattern]	2		[Horizontal line]	[Wavy line]			
3	[Hatched pattern]	3		[Horizontal line]	[Wavy line]			
4	[Hatched pattern]	4	late Pleistocene	[Horizontal line]	[Wavy line]		5Y 3/1 To 5Y 3/2	
5	[Hatched pattern]	5		[Horizontal line]	[Wavy line]			
6	[Hatched pattern]	6		[Horizontal line]	[Wavy line]			
7	[Hatched pattern]	6		[Horizontal line]	[Wavy line]			
8	[Hatched pattern]	7		[Horizontal line]	[Wavy line]			
	[Hatched pattern]	CC		[Horizontal line]	[Wavy line]			
						M		



SITE 939 HOLE B CORE 9H

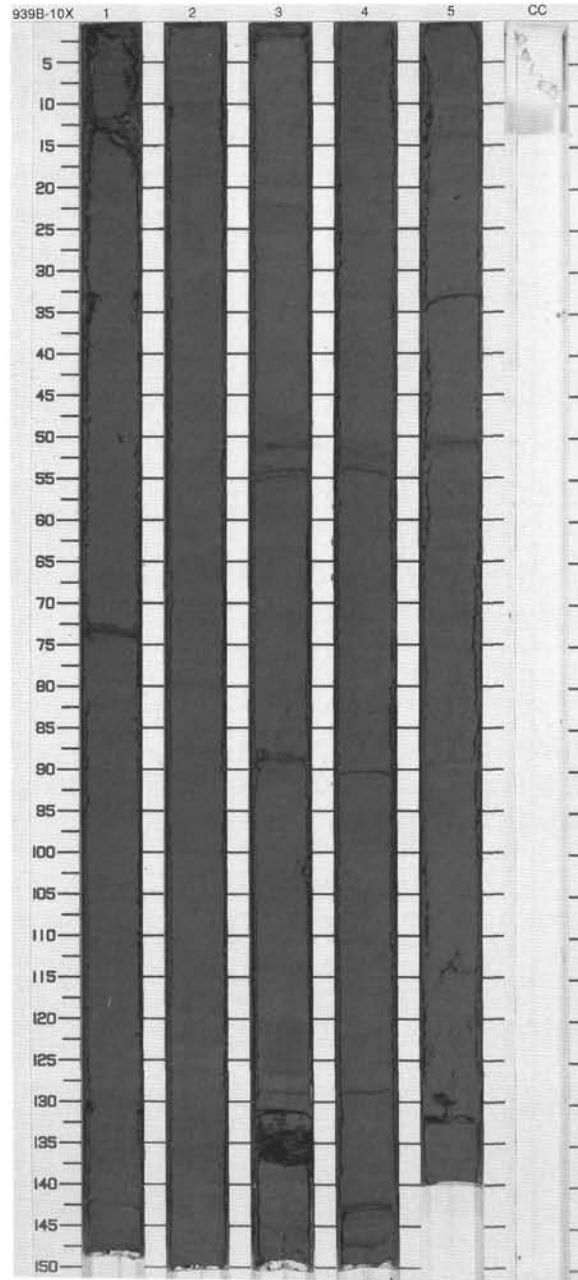
CORED 70.5 - 80.0 mbsf

Meter	Graphic Lith.	Section	Age	Structure	Disturb	Sample	Color	Description
1	[Hatched pattern]	1		—	WW			<p>SILTY CLAY WITH SILT LAMINAE AND BEDS</p> <p>Major Lithology: The very dark gray silty clay in this core contains a few silt laminae and sandy silt beds. Black (N2) staining from iron monosulfide is common throughout the core.</p> <p>General Description: Deformed color banding and disrupted bedding planes of silt laminae and beds indicate drilling disturbance in Section 1 and massive flow-in structures in Sections 5 through to 7 and in CC.</p>
1	[Hatched pattern]	2		—				
2	[Hatched pattern]	3		—				
3	[Hatched pattern]	4		—				
4	[Hatched pattern]	4	late Pleistocene	—				
5	[Hatched pattern]	5		—		5Y 3/1		
6	[Hatched pattern]	6		—				
7	[Hatched pattern]	7		—				
9	[Hatched pattern]	CC		—				
							M	



SITE 939 HOLE B CORE 10X CORED 80.0 - 89.7 mbsf

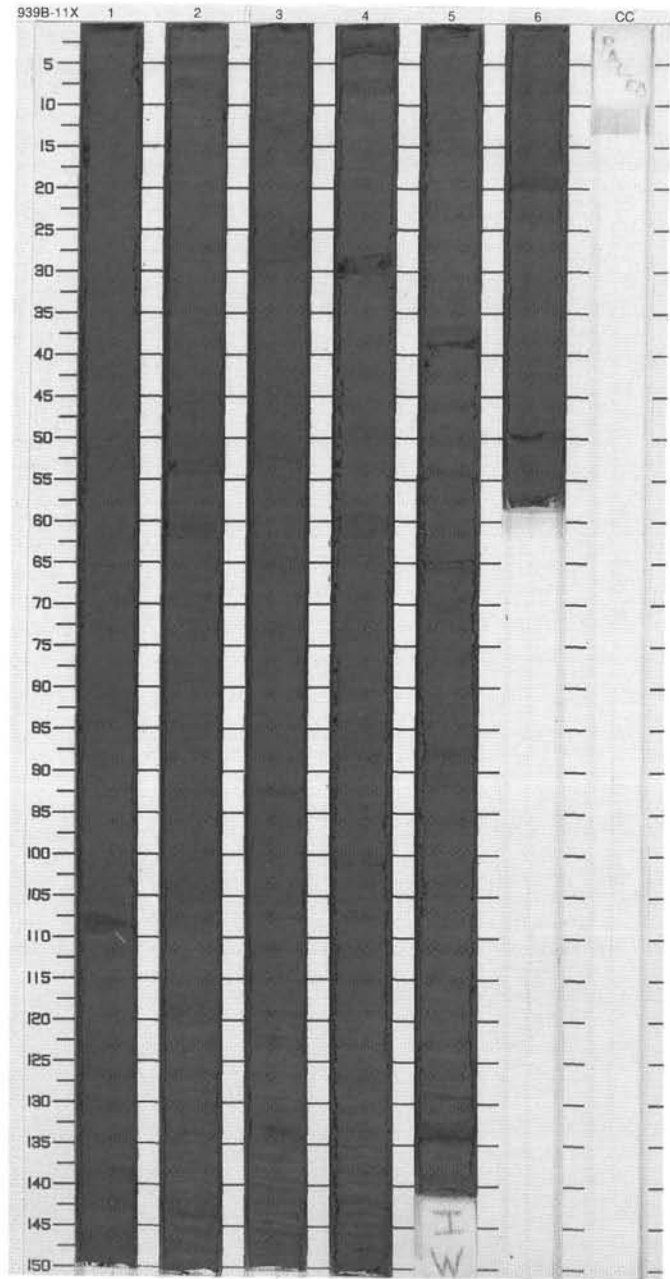
Meter	Graphic Lith.	Section	Age	Structure	Disturb	Sample	Color	Description
1	[Hatched pattern]	1			○			<p>SILTY CLAY</p> <p>Major Lithology: This core consists of faintly black (N2) color-banded very dark gray to dark olive gray silty clay.</p>
2	[Hatched pattern]	2						
3	[Hatched pattern]	3	late Pleistocene					
4	[Hatched pattern]	4					5Y 3/1 To 5Y 3/2	
5	[Hatched pattern]	5						
6	[Hatched pattern]	6						
7	[Hatched pattern]	7						
						M		



SITE 939 HOLE B CORE 11X

CORED 89.7 - 99.4 mbsf

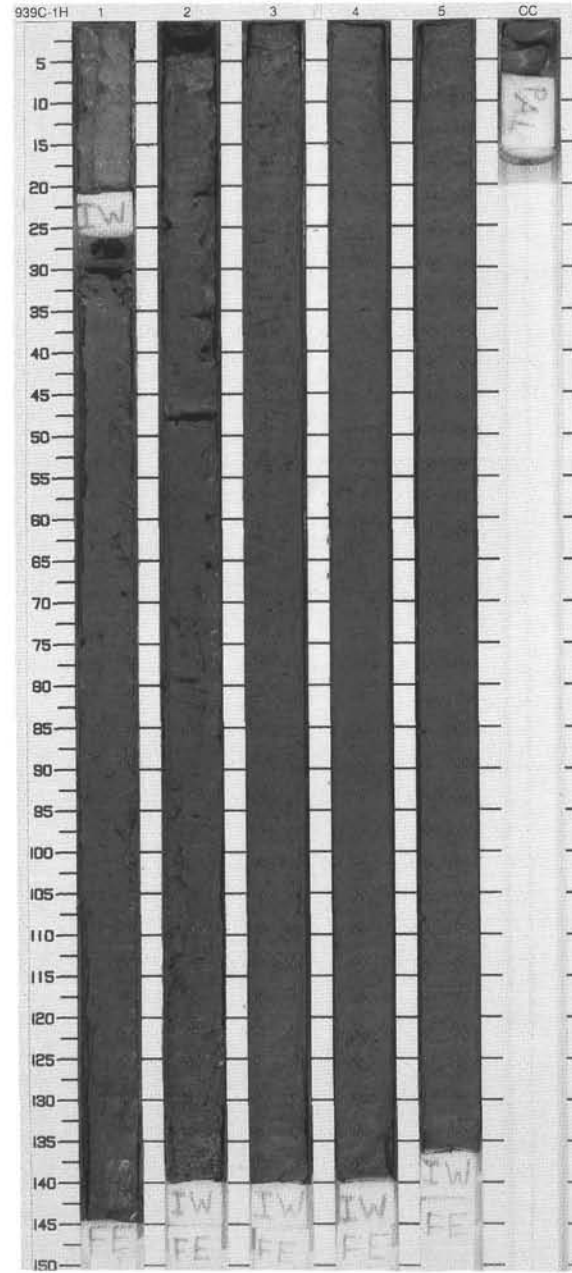
Meter	Graphic Lith.	Section Age	Structure	Disturb	Sample	Color	Description
1	[Hatched pattern]	1					SILTY CLAY Major Lithology: This core consists of faintly black (N2) color-banded dark gray and very dark gray silty clay. The color-banded intervals alternate with intervals that contain "structureless" muds.
2	[Hatched pattern]	2					
3	[Hatched pattern]	3					
4	[Hatched pattern]	3				5Y 3/1 To 5Y 4/1	
5	[Hatched pattern]	4					
6	[Hatched pattern]	4					
7	[Hatched pattern]	5					
8	[Hatched pattern]	6					
		CC					



SITE 939 HOLE C CORE 1H

CORED 0.0 - 7.6 mbsf

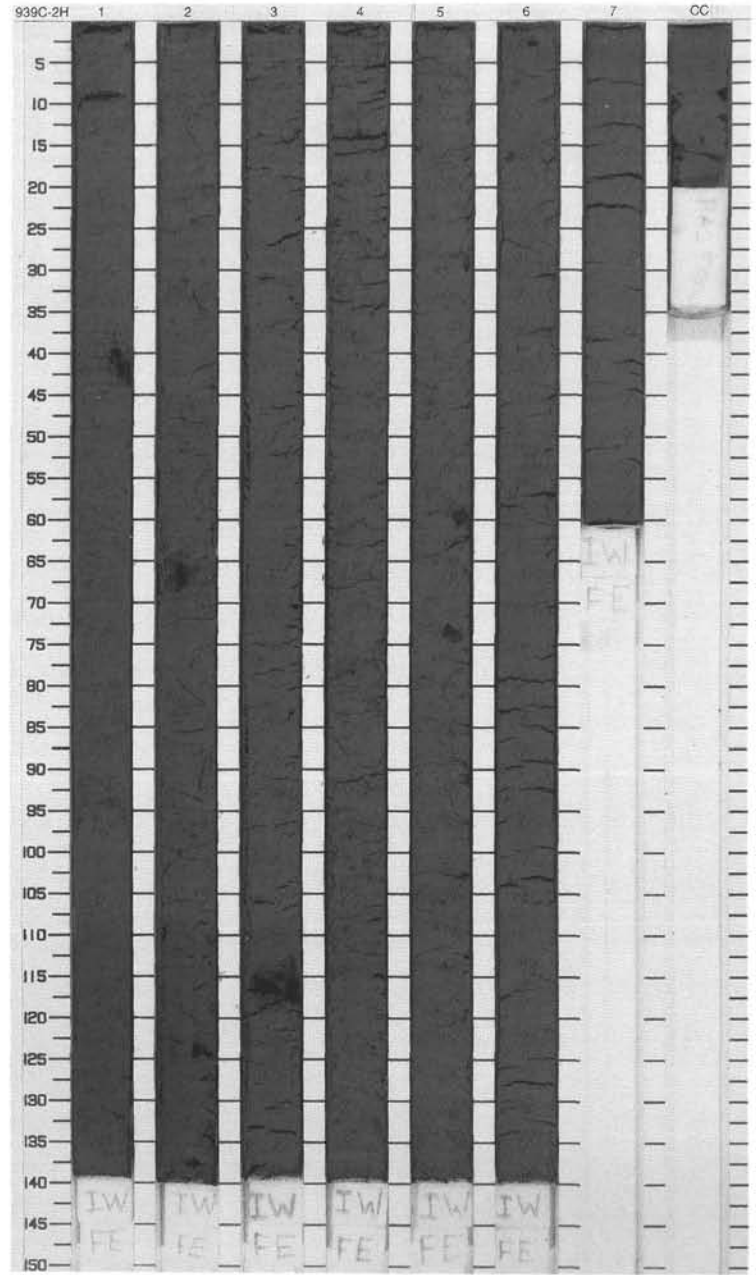
Meter	Graphic Lith.	Section	Age	Structure	Disturb	Sample	Color	Description
0.0	[Symbol]			[Symbol]		I		<p>CALCAREOUS CLAY AND CLAY</p> <p>Major Lithology: This core color grades from a light yellowish brown nannofossil-foraminifer-rich clay at the top of the core through gray to dark gray nannofossil-foraminifer-bearing clay at the bottom. Within the interval 20–29 cm, a dark reddish brown (5YR 2.5/2) indurated, diagenetic, iron-rich crust occurs. Black (N2) color mottles and bioturbation are common below 30 cm to the bottom of the core.</p>
1.0	[Symbol]	1		[Symbol]		I		
2.0	[Symbol]	2		[Symbol]		I		
3.0	[Symbol]	3	late Pleistocene	[Symbol]		I	10YR 6/4 To 5Y 4/1	
4.0	[Symbol]	4		[Symbol]		I		
5.0	[Symbol]	5		[Symbol]		I		
6.0	[Symbol]			[Symbol]		I		
7.0	[Symbol]			[Symbol]		M		



SITE 939 HOLE C CORE 2H

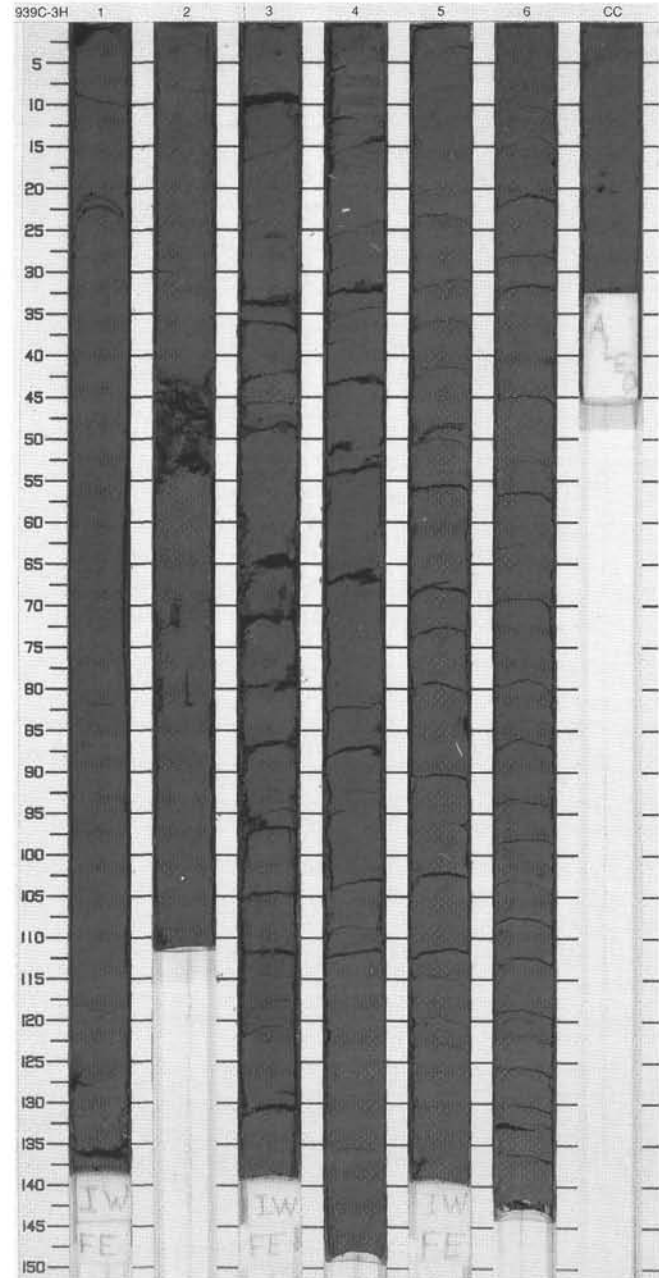
CORED 7.6 - 17.1 mbsf

Meter	Graphic Lith.	Section	Age	Structure	Disturb	Sample	Color	Description
1	[Hatched pattern]	1	late Pleistocene	☼				SILTY CLAY Major Lithology: This core consists of dark gray silty clay.
2	[Hatched pattern]	2		☼		I		
3	[Hatched pattern]	3		☼		I		
4	[Hatched pattern]	3		☼		I		
5	[Hatched pattern]	4		☼		I	5Y 4/1	
6	[Hatched pattern]	4		☼		I		
7	[Hatched pattern]	5		☼		I		
8	[Hatched pattern]	6		☼		I		
9	[Hatched pattern]	7		☼		I		
10	[Hatched pattern]	CC				I		



SITE 939 HOLE C CORE 3H CORED 17.1 - 26.6 mbsf

Meter	Graphic Lith.	Section	Age	Structure	Disturb	Sample	Color	Description
1	[Hatched pattern]	1		}}				<p>SILTY CLAY</p> <p>Major Lithology: This core contains dark gray silty clay.</p>
2	[Hatched pattern]	2				I		
3	[Hatched pattern]	3		}}				
4	[Hatched pattern]	3		}}				
5	[Hatched pattern]	4	late Pleistocene			I	5Y 4/1	
6	[Hatched pattern]	4		}}				
7	[Hatched pattern]	5		}}				
8	[Hatched pattern]	6		}}		I		
9	[Hatched pattern]	6		}}				
	[Hatched pattern]	CC				M		



SITE 939 HOLE C CORE 4H

CORED 26.6 - 36.1 mbsf

Meter	Graphic Lith.	Section	Age	Structure	Disturb	Sample	Color	Description
1	[Hatched pattern]	1		}}				SILTY CLAY Major Lithology: This core consists of dark gray silty clay.
2	[Hatched pattern]	2		}}		I		
3	[Hatched pattern]	3						
4	[Hatched pattern]	3		}}				
5	[Hatched pattern]	4	late Pleistocene			I		
6	[Hatched pattern]	4		}}			5Y 4/1	
7	[Hatched pattern]	5		}}				
8	[Hatched pattern]	6		}}		I		
9	[Hatched pattern]	7		}}				
10	[Hatched pattern]	CC				I	M	

