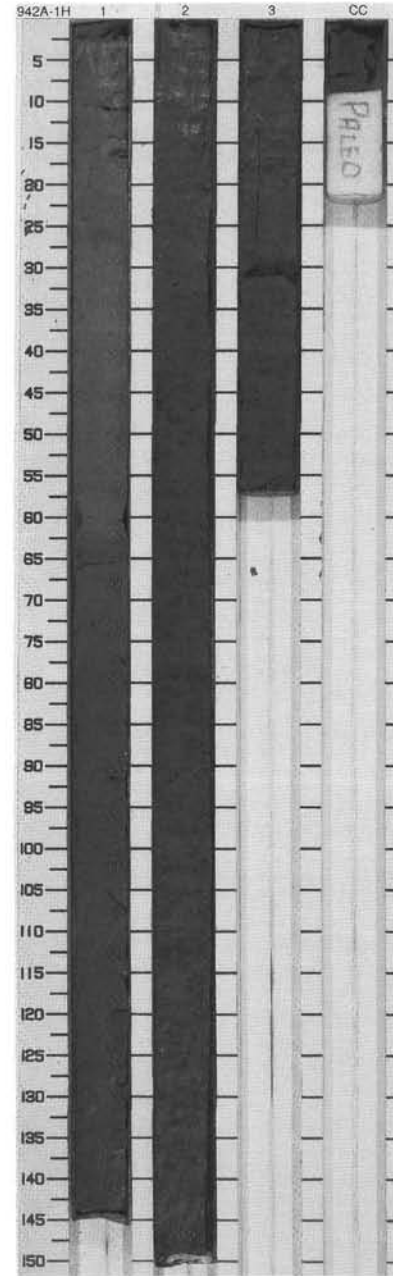


SITE 942 HOLE A CORE 1H

CORED 0.0 - 3.8 mbsf

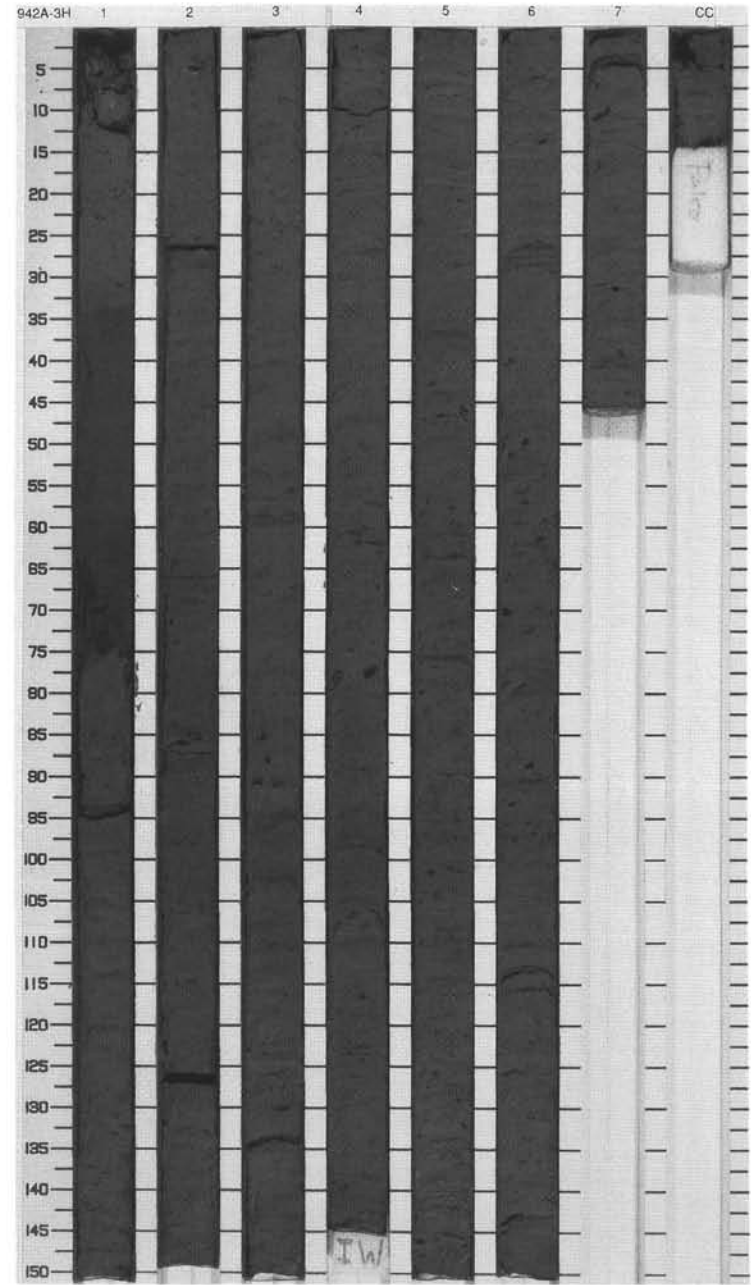
Meter	Graphic Lith.	Section	Age	Structure	Disturb	Sample	Color	Description
0.0 - 1.0	[Graphic Lithology: Dotted pattern]	1	Holocene	---		S	10YR 5/3 To 5Y 5/1	<p>CALCAREOUS CLAY and CLAY</p> <p>Major Lithologies: From the top of the core to 66 cm in Section 1, the sediment consists of brown calcareous clay that contains a semi-indurated, 3-cm-thick ?iron-rich clay horizon (63 and 66 cm). Below 66 cm, the calcareous clay grades to a black (N2/0) mottled dark gray clay that is the dominant sediment through to the bottom of the core.</p>
1.0 - 2.0	[Graphic Lithology: Dotted pattern]	2	late Pleistocene	~		S	5Y 4/1	
2.0 - 3.0	[Graphic Lithology: Dotted pattern]	3		~		S		
3.0 - 3.8	[Graphic Lithology: Dotted pattern]	CC		~		M		



SITE 942 HOLE A CORE 3H

CORED 13.3 - 22.8 mbsf

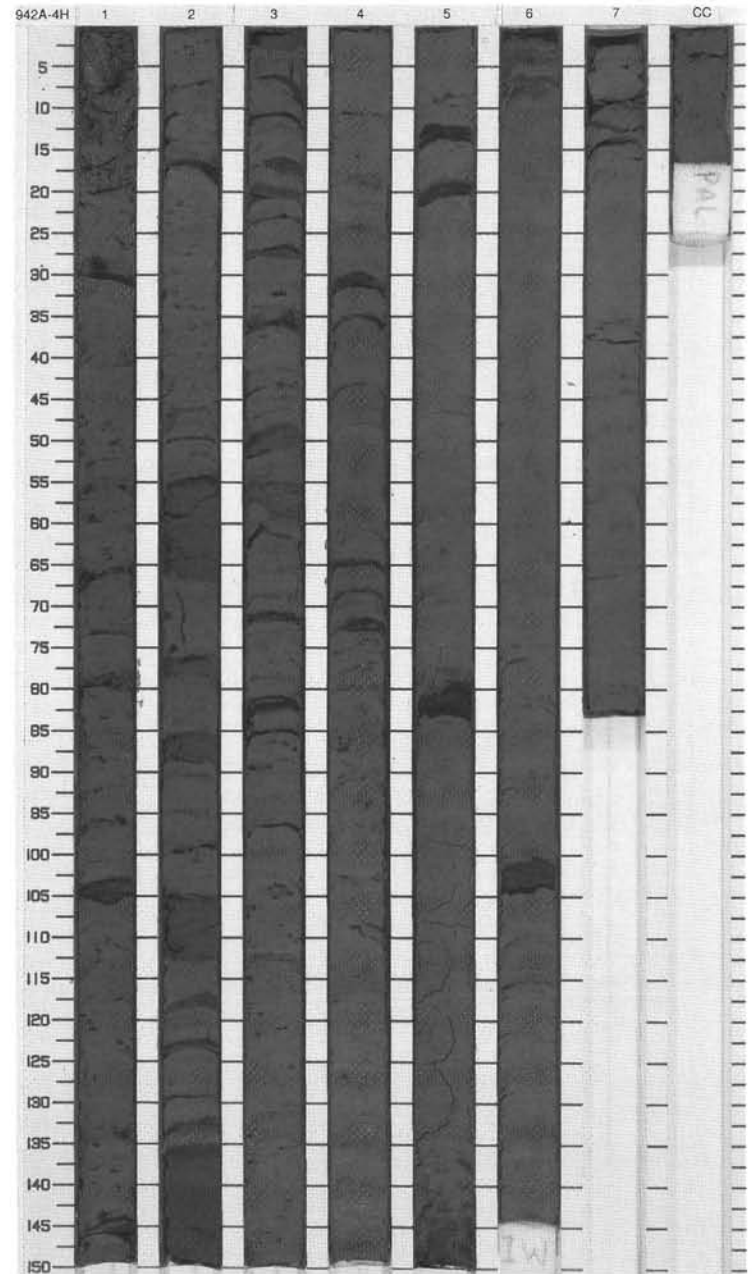
Meter	Graphic Lith.	Section	Age	Structure	Disturb	Sample	Color	Description
1	[Hatched pattern]	1		[Symbol]	○	S		<p>SILTY CLAY</p> <p>Major Lithology: The sediment in this core consists of dark gray slightly bioturbated and mottled silty clay. A 50-cm-thick very fine sand bed occurs in Section 1.</p>
2	[Hatched pattern]	2		[Symbol]				
3	[Hatched pattern]	3		[Symbol]				
4	[Hatched pattern]	3		[Symbol]				
5	[Hatched pattern]	4	late Pleistocene	[Symbol]			5Y 4/1	
6	[Hatched pattern]	5		[Symbol]		I		
7	[Hatched pattern]	6		[Symbol]				
8	[Hatched pattern]	6		[Symbol]				
9	[Hatched pattern]	7		[Symbol]				
	[Hatched pattern]	CC		[Symbol]		M		



SITE 942 HOLE A CORE 4H

CORED 22.8 - 32.3 mbsf

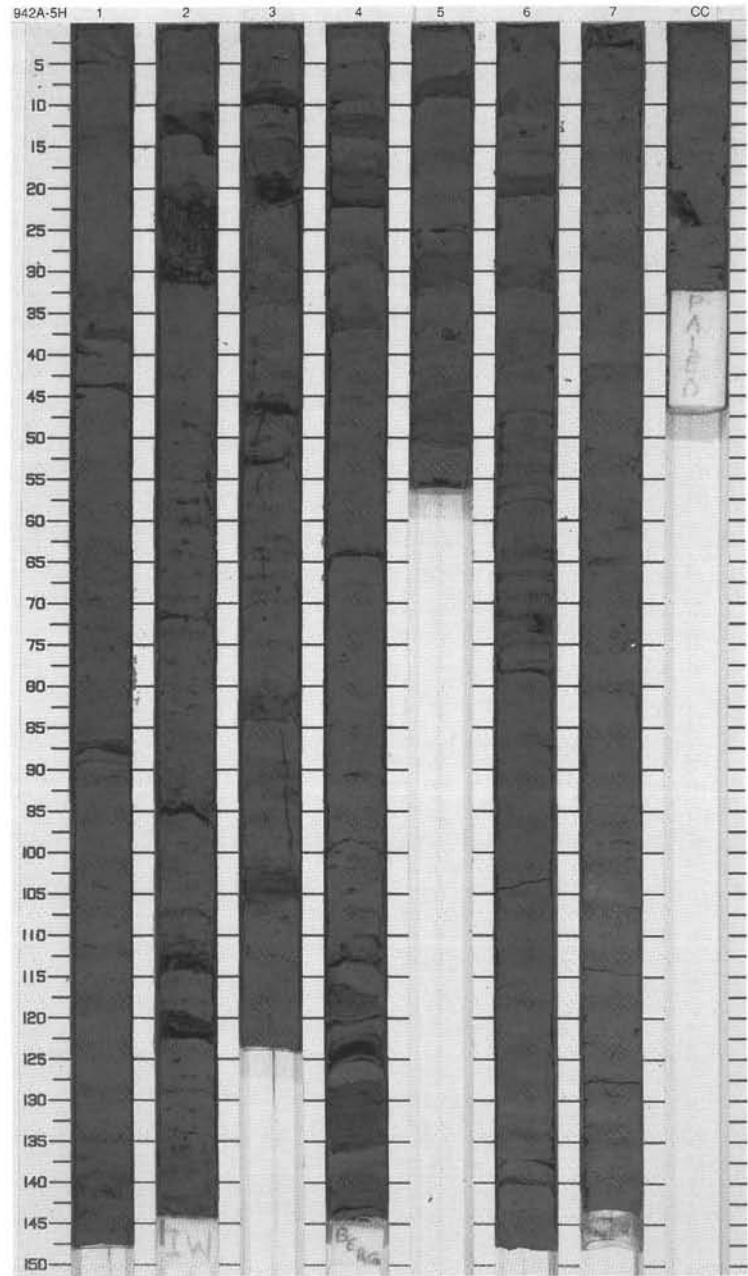
Meter	Graphic Lith.	Section	Age	Structure	Disturb	Sample	Color	Description
1	[Hatched pattern]	1		☼				<p>SILTY CLAY</p> <p>Major Lithology: This core consists of moderately bioturbated dark gray silty clay. From 50 cm in Section 2 through to 80 cm in Section 3, thin interbedded very fine sands occur. A carbonate-rich interval, consisting of foraminifers and nannofossils, occurs between 80 and 150 cm in Section 4.</p>
2	[Hatched pattern]	2		☼				
3	[Hatched pattern]	3		☼				
4	[Hatched pattern]	3		☼				
5	[Hatched pattern]	4	late Pleistocene	☼			5Y 4/1	
6	[Hatched pattern]	4		☼				
7	[Hatched pattern]	5		☼				
8	[Hatched pattern]	6		☼				
9	[Hatched pattern]	7		☼			I	
		CC						M



SITE 942 HOLE A CORE 5H

CORED 32.3 - 41.8 mbsf

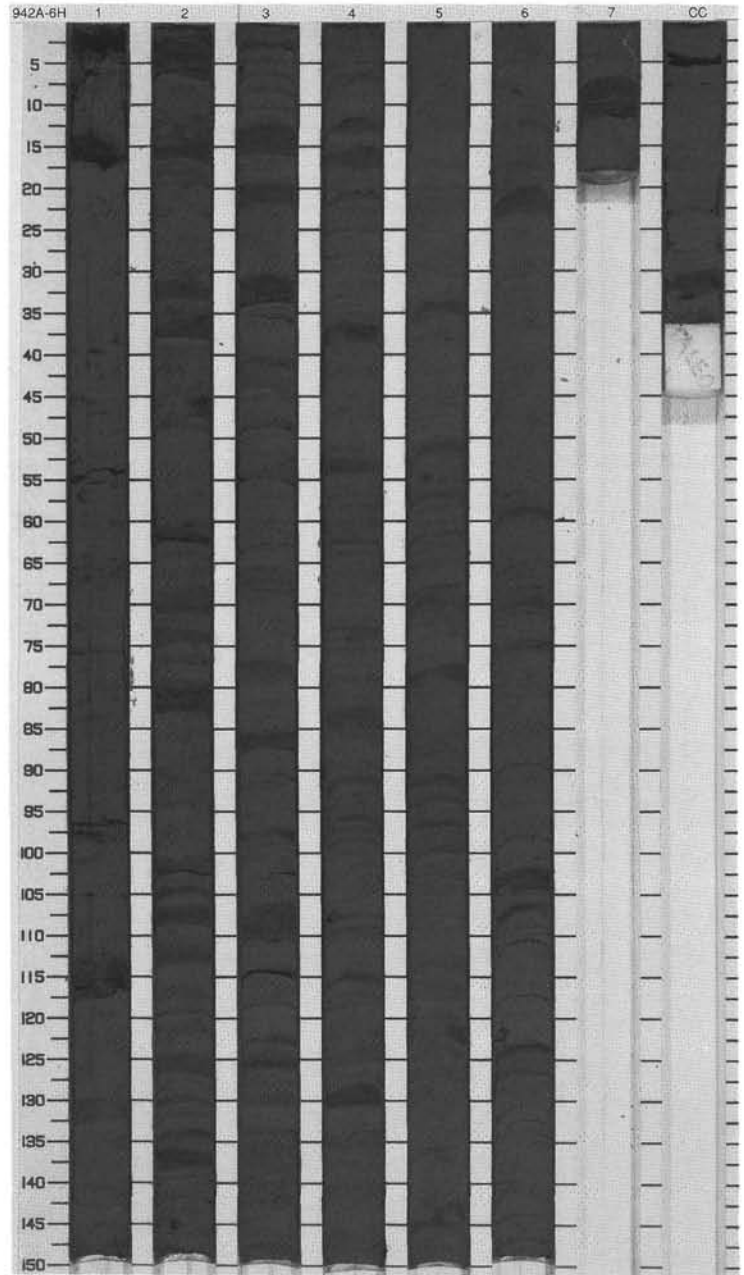
Meter	Graphic Lith.	Section	Age	Structure	Disturb	Sample	Color	Description
1	[Hatched pattern]	1		[Symbol]				<p>SILTY CLAY</p> <p>Major Lithology: This core consists of moderately to heavily bioturbated dark gray silty clay. The interval from 80 cm in Section 3 through 85 cm in Section 6 consists of thin-bedded fine sand alternating with silty clay; some beds are cross-laminated. A mud clast is imbedded within a sand layer at 40 cm in Section 6. From 90 cm in Section 7 through to the bottom of the core, a carbonate-bearing silty clay occurs. The carbonate component consists of foraminifers and nanofossils.</p>
2	[Hatched pattern]	2		[Symbol]				
3	[Hatched pattern]	3		[Symbol]				
4	[Hatched pattern]	3		[Symbol]				
5	[Hatched pattern]	4	late Pleistocene	[Symbol]				
6	[Hatched pattern]	5		[Symbol]			5Y 4/1	
7	[Hatched pattern]	6		[Symbol]				
8	[Hatched pattern]	7		[Symbol]				
9	[Hatched pattern]	7		[Symbol]				
CC	[Hatched pattern]	CC		[Symbol]				
						M		



SITE 942 HOLE A CORE 6H

CORED 41.8 - 51.3 mbsf

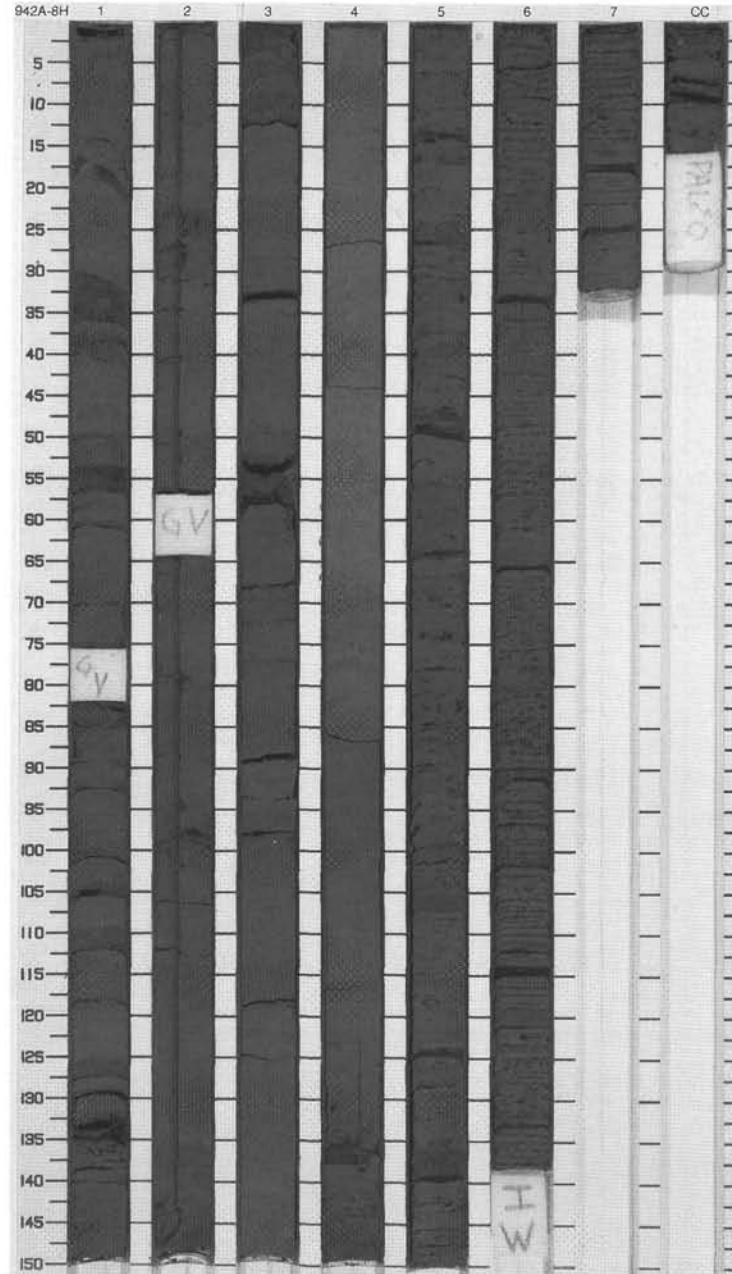
Meter	Graphic Lith.	Section	Age	Structure	Disturb	Sample	Color	Description
1	[Hatched pattern]	1		[Symbol]				<p>SILTY CLAY AND SAND</p> <p>Major Lithology: This core consists of dark greenish gray silty clay and thinly bedded sand. Many of the beds are parallel- or cross-laminated.</p>
2	[Dotted pattern]	2		[Symbol]				
3	[Hatched pattern]	3		[Symbol]				
4	[Hatched pattern]	4	late Pleistocene	[Symbol]			5GY 4/1	
5	[Hatched pattern]	5		[Symbol]				
6	[Hatched pattern]	6		[Symbol]				
7	[Hatched pattern]	7		[Symbol]				
9	[Hatched pattern]	CC					M	



SITE 942 HOLE A CORE 8H

CORED 60.8 - 70.3 mbsf

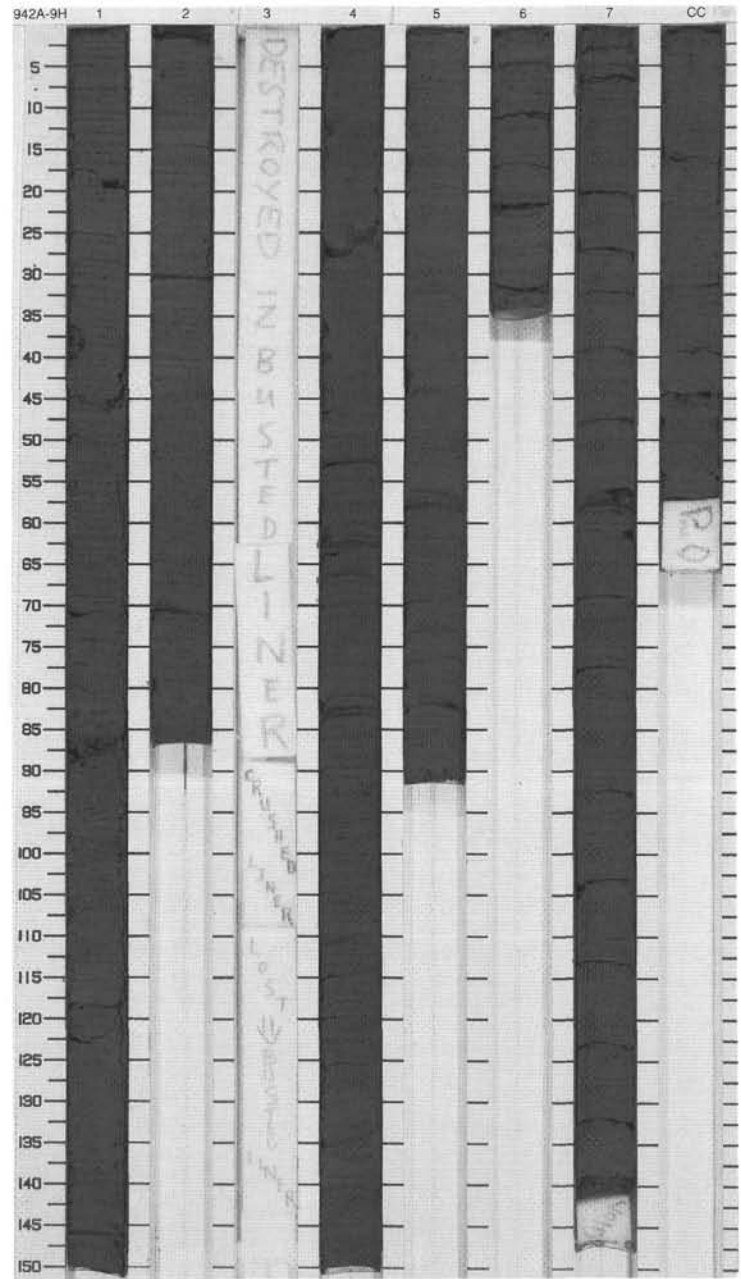
Meter	Graphic Lith.	Section	Age	Structure	Disturb	Sample	Color	Description
1		1	late Pleistocene	}}			5Y 4/1	<p>SILTY CLAY AND CALCAREOUS CLAY</p> <p>Major Lithology: This core is dominated by dark greenish gray moderately bioturbated and mottled silty clay. A carbonate-rich (foraminifers and nannofossils) interval occurs from 100 cm in Section 3 through to the bottom of Section 4. Below this interval, silt laminae, mottling, and black (N2/0) color banding occur to the bottom of the core.</p>
2		2		}}				
3		3		}}				
4		3		}}				
5		4	middle Pleistocene	☼		S	5Y 5/1	
6		4		☼		S	5Y 6/1	
7		5		}}			5Y 4/1 To 10Y 4/1	
8		6	☼				10Y 3/1	
9		7	☼			I		
		CC				M		



SITE 942 HOLE A CORE 9H

CORED 70.3 - 79.8 mbsf

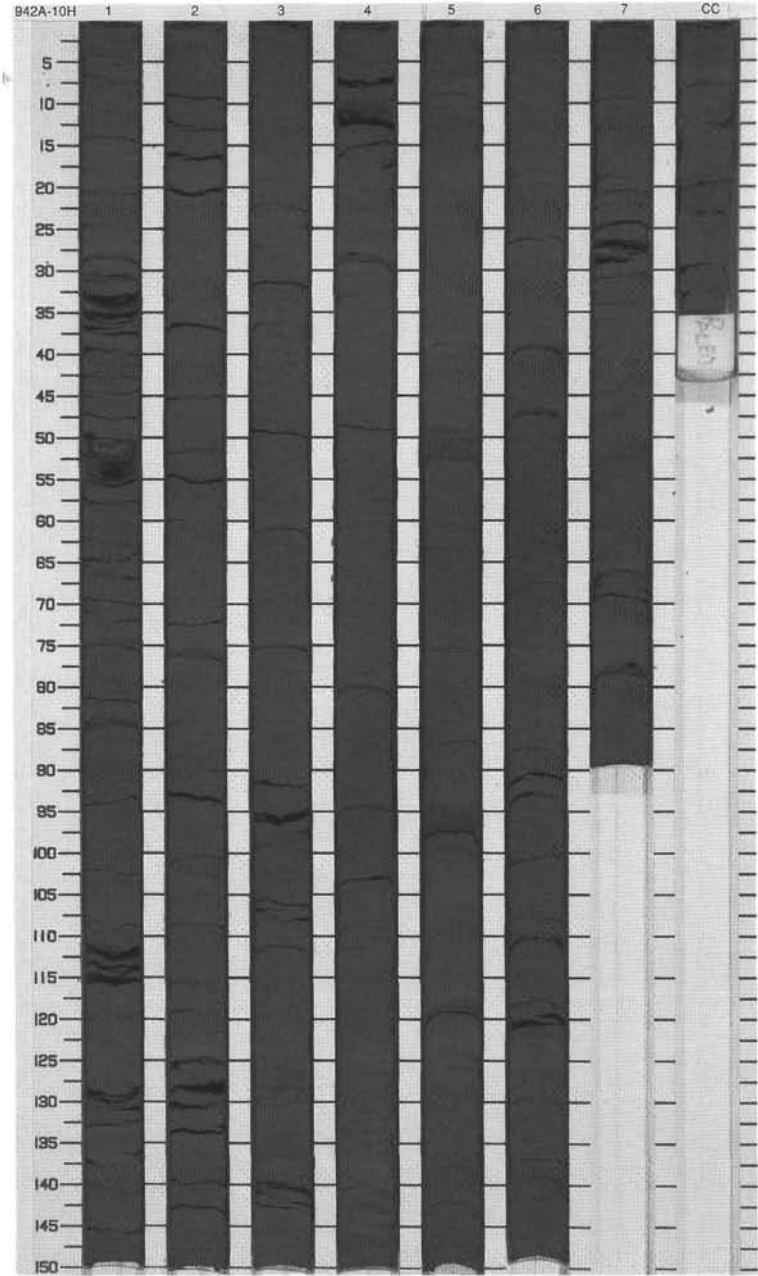
Meter	Graphic Lith.	Section	Age	Structure	Disturb	Sample	Color	Description
1	[Hatched pattern]	1	middle Pleistocene	[Vertical lines]			5Y 4/1	<p>SILTY CLAY</p> <p>Major Lithology: This core consists of black (N2/0) color-banded dark gray silty clay. Silt laminae are scattered throughout the core.</p> <p>General Description: This core was found to be highly deformed on recovery - as such much material was lost as a result of split liners—no Section 3.</p>
2	[Hatched pattern]	2		[Vertical lines]				
3	[Hatched pattern]	4		[Vertical lines]				
4	[Hatched pattern]	5		[Vertical lines]				
5	[Hatched pattern]	6		[Vertical lines]				
6	[Hatched pattern]	7		[Vertical lines]				
7	[Hatched pattern]	CC		[Vertical lines]				
						M		



SITE 942 HOLE A CORE 10H

CORED 79.8 - 89.3 mbsf

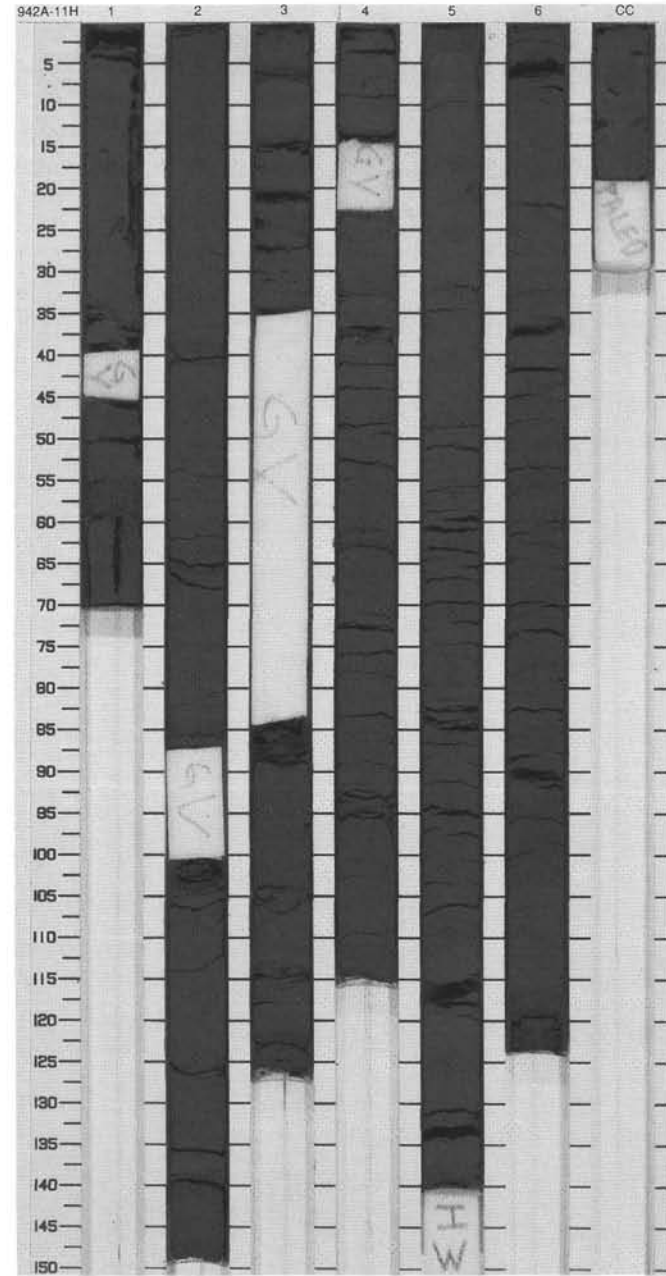
Meter	Graphic Lith.	Section	Age	Structure	Disturb	Sample	Color	Description
1	[Hatched pattern]	1		[Vertical lines]				<p>SILTY CLAY</p> <p>Major Lithology: This core contains black (N2/0) color-banded silty clay. Silt beds are scattered throughout. Section 5 contains two black (N2/0) beds of ?hydrotrillite at 48-53 and 94-101 cm.</p>
2	[Hatched pattern]	2		[Vertical lines]				
3	[Hatched pattern]	3		[Vertical lines]				
4	[Hatched pattern]	3		[Vertical lines]				
5	[Hatched pattern]	4	middle Pleistocene	[Vertical lines]			5Y 4/1	
6	[Hatched pattern]	5		[Vertical lines]				
7	[Hatched pattern]	5		[Vertical lines]		S		
8	[Hatched pattern]	6		[Vertical lines]				
9	[Hatched pattern]	7		[Vertical lines]				
10	[Hatched pattern]	CC		[Vertical lines]		M		



SITE 942 HOLE A CORE 11H

CORED 89.3 - 98.8 mbsf

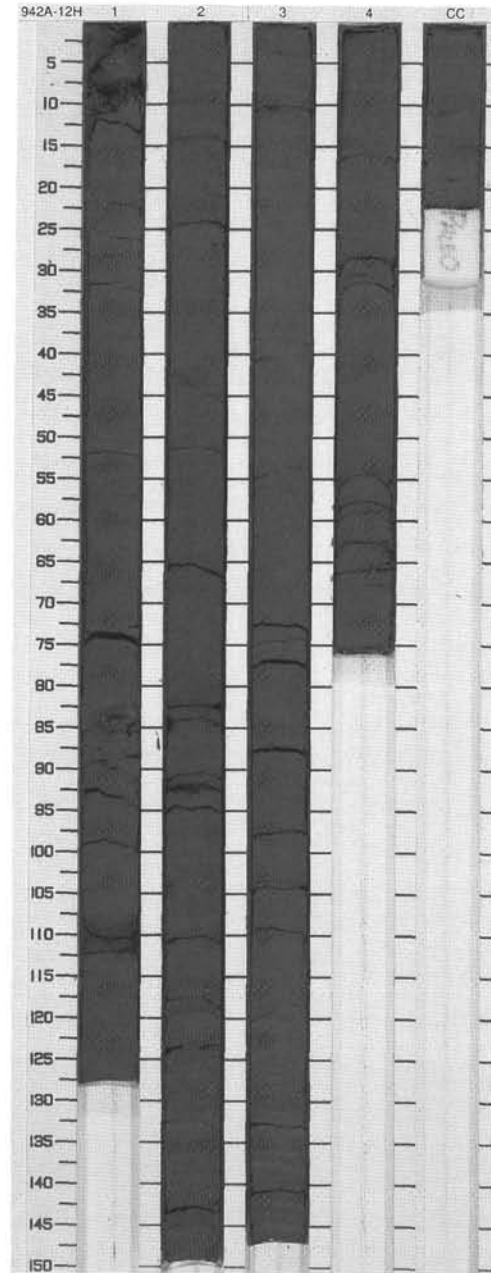
Meter	Graphic Lith.	Section	Age	Structure	Disturb	Sample	Color	Description
1	[Hatched pattern]	1		[Symbol]	W			<p>SILTY CLAY WITH SILT LAMINAE AND BEDS</p> <p>Major Lithology: The core consists of a dark olive gray clay with numerous silt laminae and graded silt beds. Faint color banding and mottling is apparent in the intervals without silt layers.</p> <p>General Description: Gas escape and drilling disturbance have distorted the sediment in Sections 1, 3, and 4.</p>
2	[Hatched pattern]	2		[Symbol]	W			
3	Void	3		[Symbol]	W			
4	[Hatched pattern]	4	middle Pleistocene	[Symbol]	W			
5	[Hatched pattern]	5		[Symbol]		5Y 3/2		
6	[Hatched pattern]	6		[Symbol]				
7	[Hatched pattern]	6		[Symbol]				
		CC					M	



SITE 942 HOLE A CORE 12H

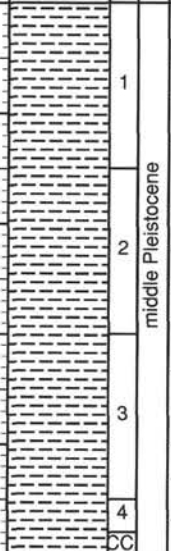



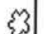
CORED 98.8 - 104.0 mbsf

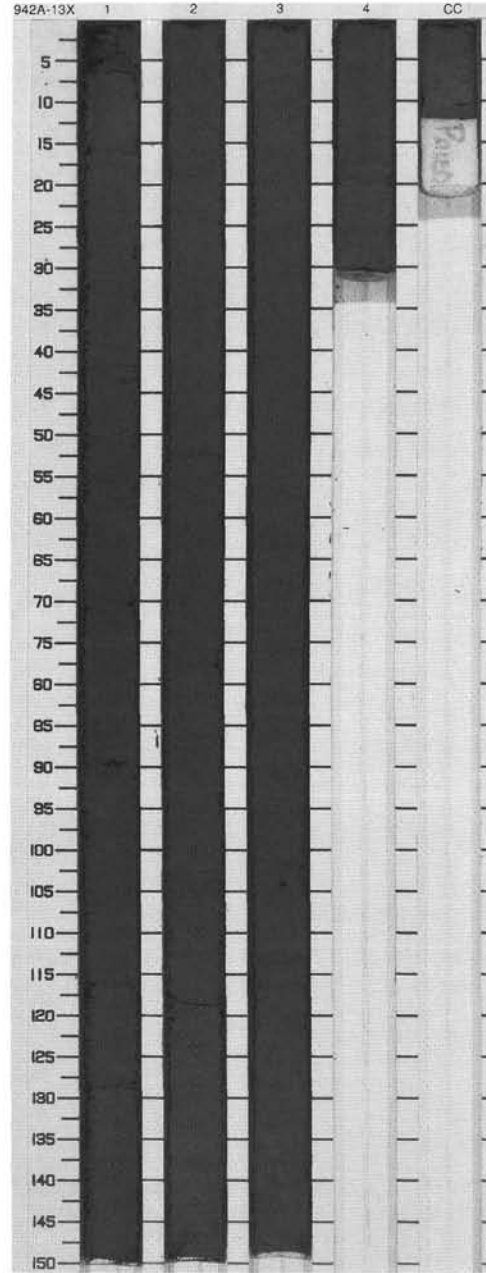
Meter	Graphic Lith.	Section	Age	Structure	Disturb	Sample	Color	Description
1	[Symbol]	1	middle Pleistocene	[Symbol]	○	M	5Y 3/2	<p>SILTY CLAY WITH SILT LAMINAE AND BEDS</p> <p>Major Lithology: The sediment in this core is a dark olive gray silty clay with several individual silt laminae and thin silt beds scattered throughout the core. The silty clay intervals between silt layers are faintly black color banded or mottled and bioturbated.</p>
2	[Symbol]	2		[Symbol]	○			
3	[Symbol]	3		[Symbol]				
4	[Symbol]	4		[Symbol]				
5	[Symbol]	CC		[Symbol]				



SITE 942 HOLE A CORE 13X

CORED 104.0 - 110.1 mbsf

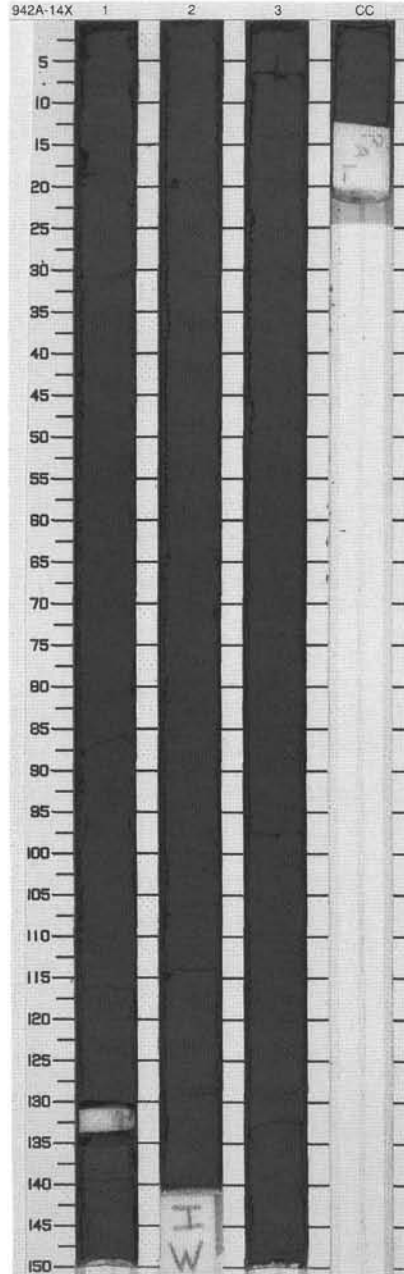
Meter	Graphic Lith.	Section	Age	Structure	Disturb	Sample	Color	Description
1		1	middle Pleistocene				5Y 3/2 To 5Y 3/1	SILTY CLAY WITH SILT LAMINAE Major Lithology: This core consists of a very dark to dark olive gray silty clay with approximately four silt laminae per section. Faint color banding and mottling occur throughout the core.
2		2						
3		3						
4		4						
5		CC						



SITE 942 HOLE A CORE 14X

CORED 110.1 - 119.7 mbsf

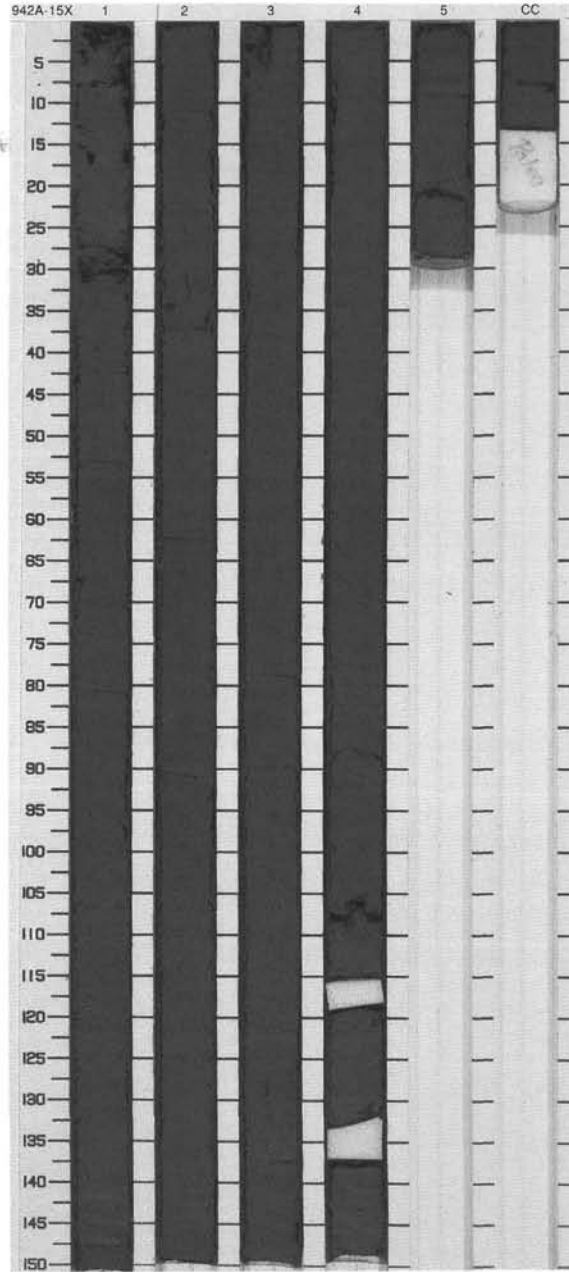
Meter	Graphic Lith.	Section	Age	Structure	Disturb	Sample	Color	Description
1	[Hatched pattern]	1	middle Pleistocene	[Symbol]	[Symbol]		5Y 3/2 To 5Y 3/1	SILTY CLAY WITH SILT LAMINAE Major Lithology: Dark olive gray to very dark gray silty clay with several silt laminae is the dominant lithology in this core. Intervals of thin black (N2/0) color banding alternate with mottled burrows throughout the core.
2	[Hatched pattern]	2		[Symbol]	[Symbol]			
3	[Hatched pattern]	3		[Symbol]	[Symbol]	I		
4	[Hatched pattern]	3		[Symbol]	[Symbol]			
		CC				M		



SITE 942 HOLE A CORE 15X

CORED 119.7 - 129.3 mbsf

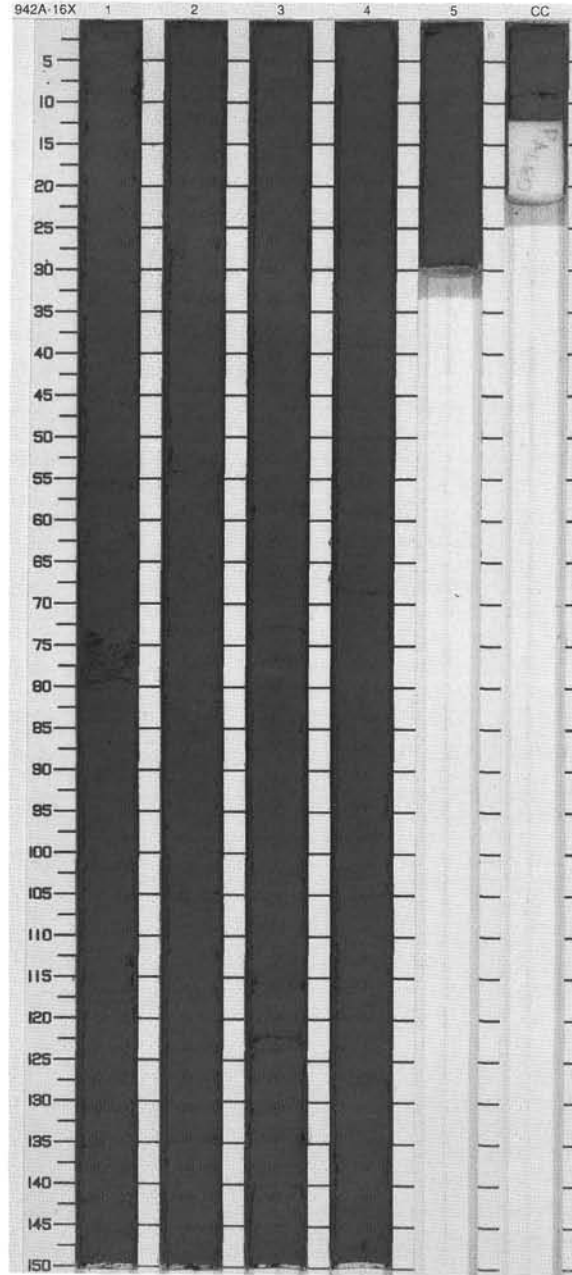
Meter	Graphic Lith.	Section	Age	Structure	Disturb	Sample	Color	Description
1	[Hatched pattern]	1	middle Pleistocene	[Symbol: three horizontal lines]	○ ○		5Y 3/2 To 5Y 3/1	<p>SILTY CLAY WITH SILT LAMINAE</p> <p>Major Lithology: The core consists of a very dark gray to olive gray silty clay with rare silt laminae scattered throughout. Iron monosulfide micronodules occur sporadically.</p>
2	[Hatched pattern]	2		[Symbol: three horizontal lines]				
3	[Hatched pattern]	3		[Symbol: three horizontal lines]				
4	[Hatched pattern]	4		[Symbol: three horizontal lines]				
5	[Hatched pattern]	5		[Symbol: three horizontal lines]				
6	[Hatched pattern]	CC		[Symbol: three horizontal lines]		M		



SITE 942 HOLE A CORE 16X

CORED 129.3 - 139.0 mbsf

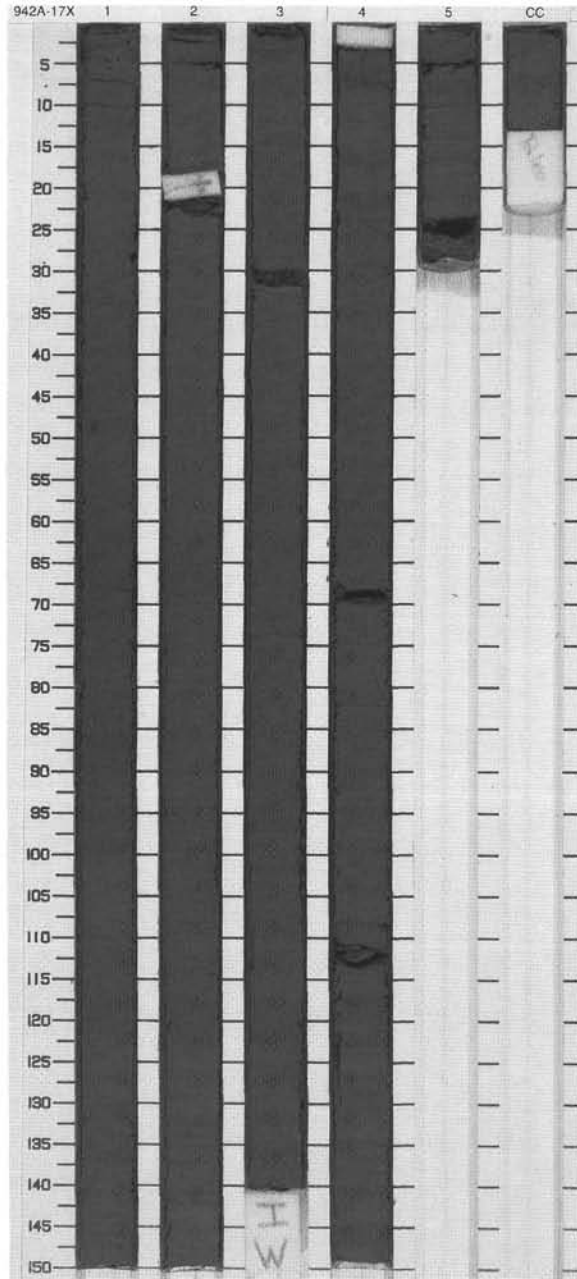
Meter	Graphic Lith.	Section Age	Structure	Disturb	Sample	Color	Description
1	[Hatched pattern]	1	[Symbol]	W			<p>SILTY CLAY WITH SILT LAMINAE AND BEDS</p> <p>Major Lithology: Very dark gray silty clay containing a few in silt laminae and silt beds is the dominant lithology in this core. Intervals of black (N2/0) mottling alternate with color banding throughout the core.</p>
2	[Hatched pattern]	2	[Symbol]	O			
3	[Hatched pattern]	3	[Symbol]	X		5Y 3/1	
4	[Hatched pattern]	4	[Symbol]	X			
5	[Hatched pattern]	5	[Symbol]	X			
6	[Hatched pattern]	CC			M		



SITE 942 HOLE A CORE 17X

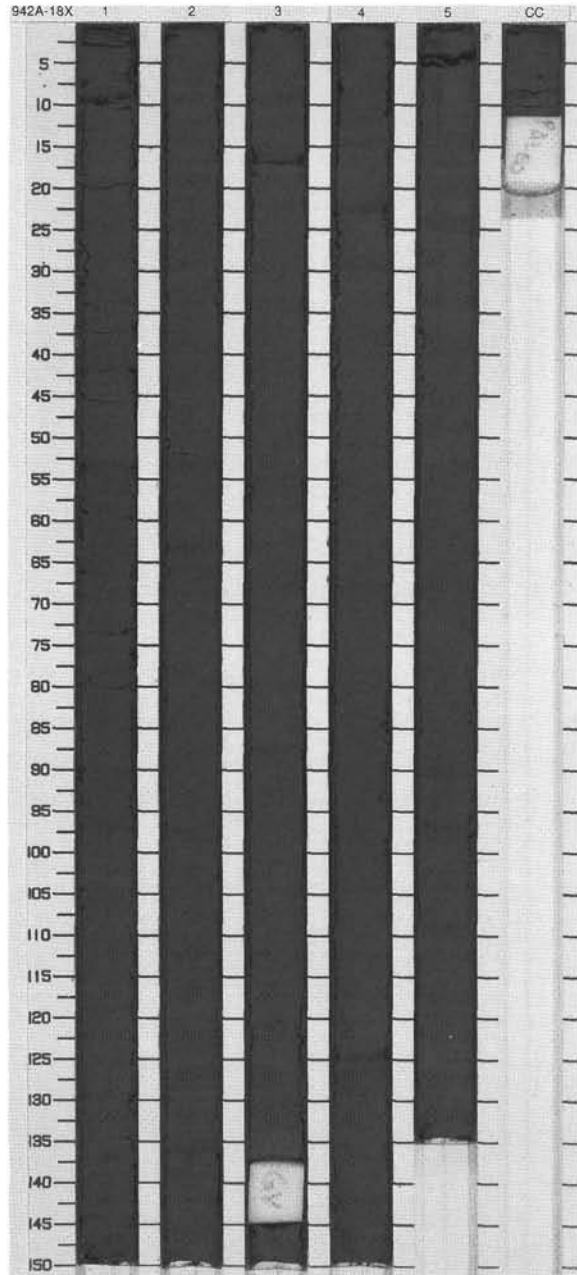
CORED 139.0 - 148.6 mbsf

Meter	Graphic Lith.	Section	Age	Structure	Disturb	Sample	Color	Description
1	[Hatched pattern]	1		[Symbol: wavy line]				<p>SILTY CLAY WITH SILT LAMINAE</p> <p>Major Lithology: This core consists of very dark gray silty clay with a few silt laminae. Black (N2/0) color banding and mottling occur throughout the core. Micronodules of iron monosulfide occur sporadically.</p>
2	[Hatched pattern]	2	middle Pleistocene	[Symbol: cloud]			5Y 3/1	
3	[Hatched pattern]	3		[Symbol: wavy line]				
4	[Hatched pattern]	4		[Symbol: cloud]		I		
5	[Hatched pattern]	5		[Symbol: wavy line]				
6	[Hatched pattern]	6		[Symbol: cloud]				
	CC					M		



SITE 942 HOLE A CORE 18X CORED 148.6 - 158.3 mbsf

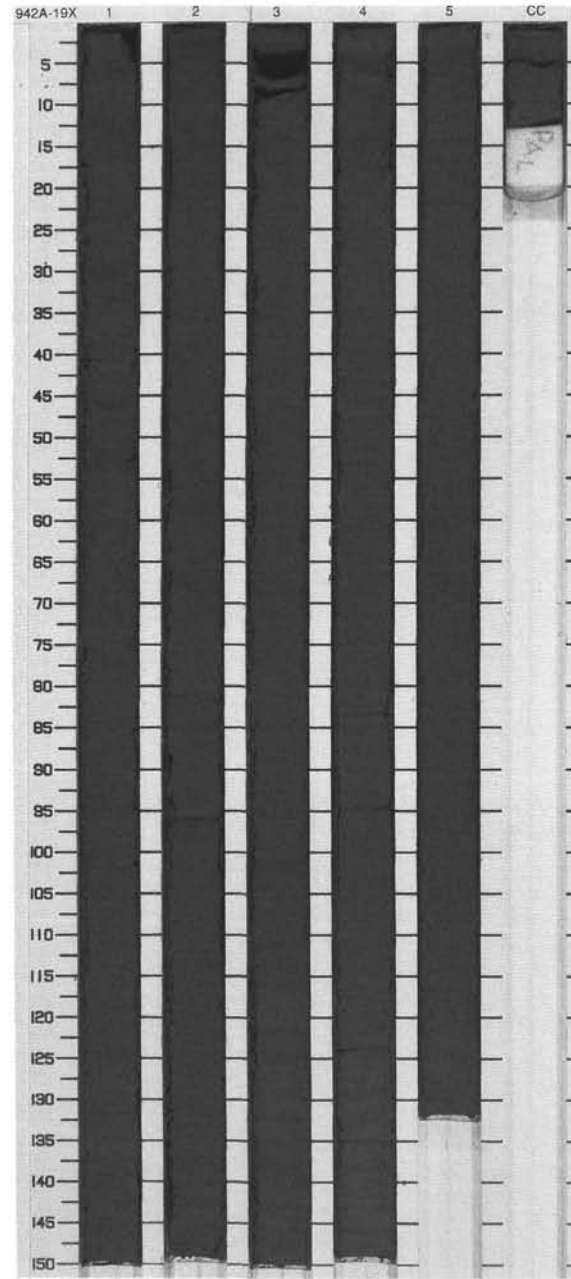
Meter	Graphic Lith.	Section	Age	Structure	Disturb	Sample	Color	Description
1		1	middle Pleistocene				5Y 3/1	<p>SILTY CLAY</p> <p>Major Lithology: The entire core is composed of very dark gray to black (N2/0) color-banded silty clay.</p>
2		2						
3		3						
4		4						
5		5						
6		6						
7		7						
	CC					M		



SITE 942 HOLE A CORE 19X

CORED 158.3 - 167.9 mbsf

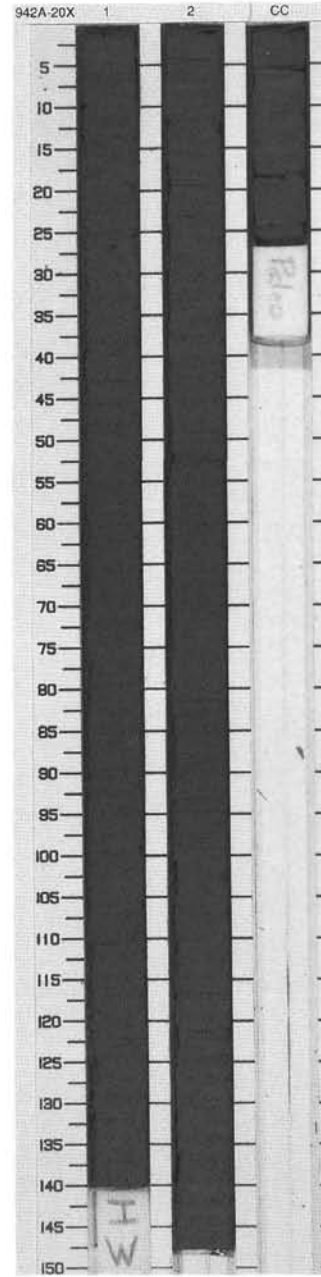
Meter	Graphic Lith.	Section	Age	Structure	Disturb	Sample	Color	Description	
1	[Hatched pattern]	1	middle Pleistocene	[Wavy lines]	X		5Y 3/1	<p>SILTY CLAY WITH SILT LAMINAE</p> <p>Major Lithology: The core consists of very dark gray silty clay with silt laminae. Black (N2/0) mottling and slight bioturbation alternate with faint black color banding throughout the core.</p>	
2	[Hatched pattern]	2		[Wavy lines]	X				
3	[Hatched pattern]	3		[Wavy lines]	X				
4	[Hatched pattern]	4		[Wavy lines]	X				
5	[Hatched pattern]	4		[Wavy lines]	X				
6	[Hatched pattern]	5		[Wavy lines]	X				
7	[Hatched pattern]	5		[Wavy lines]	X				
	[Hatched pattern]	CC		[Wavy lines]	X				
						M			



SITE 942 HOLE A CORE 20X

CORED 167.9 - 177.9 mbsf

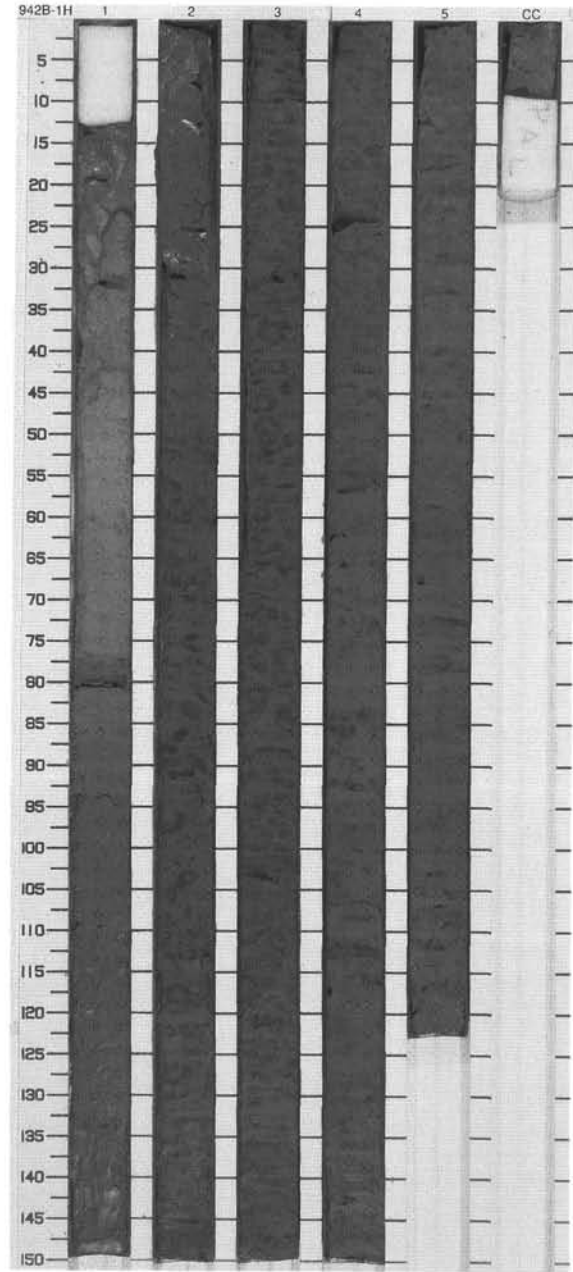
Meter	Graphic Lith.	Section	Age	Structure	Disturb	Sample	Color	Description
1	[Hatched pattern]	1	middle Pleistocene	[Symbol: vertical lines]	X	I	5Y 3/1 To 5Y 4/1	<p>SILTY CLAY WITH SILT LAMINAE</p> <p>Major Lithology: The core consists of very dark gray to dark gray black (N2/0) color-banded silty clay that contains several silt laminae. Iron monosulfide micronodules are common.</p>
2	[Hatched pattern]	2		[Symbol: vertical lines]	X			
3	[Hatched pattern]	CC		[Symbol: vertical lines]	X			
						M		



SITE 942 HOLE B CORE 1H

CORED 0.0 - 7.5 mbsf

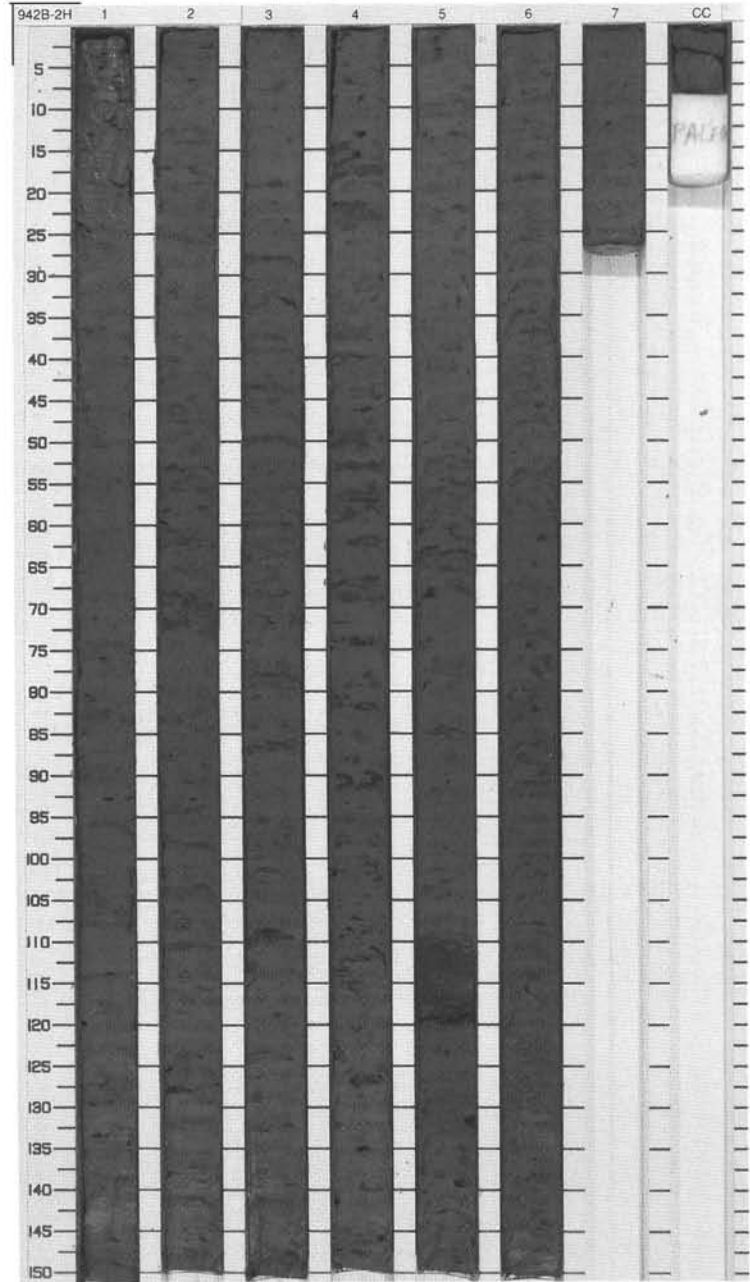
Meter	Graphic Lith.	Section	Age	Structure	Disturb	Sample	Color	Description
0.0 - 1.0	[Pattern]	1	Holocene	[Symbol]			10YR 5/4	CALCAREOUS CLAY AND CLAY Major Lithology: From the top of Section 1 to 77 cm, a yellowish brown foraminifer-nannofossil-rich calcareous clay occurs. From 77 cm, Section 1, through to the bottom of Section 1, the sediment grades to an olive gray foraminifer-nannofossil-bearing clay. Between 77 and 81 cm, the "rusty old crust" occurs. From the top of Section 2 to the bottom of the core, the sediment is heavily bioturbated and mottled, much of the sediment is stained by good old hydrotroilite.
1.0 - 2.0	[Pattern]	2		[Symbol]	W		10YR 5/1 To 5Y 4/2	
2.0 - 3.0	[Pattern]	3	late Pleistocene	[Symbol]			5Y 4/2	
3.0 - 4.0	[Pattern]	4		[Symbol]				
4.0 - 5.0	[Pattern]	5		[Symbol]				
5.0 - 6.0	[Pattern]	6		[Symbol]				
6.0 - 7.5	[Pattern]	7		[Symbol]				
7.5	CC					M		



SITE 942 HOLE B CORE 2H

CORED 7.5 - 17.0 mbsf

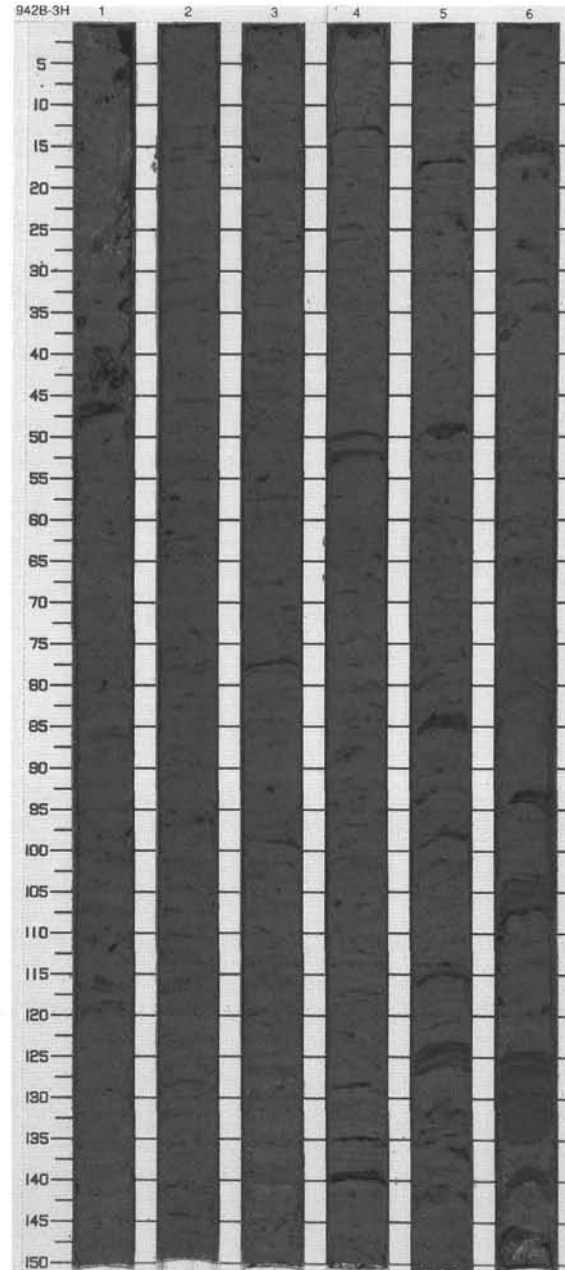
Meter	Graphic Lith.	Section	Age	Structure	Disturb	Sample	Color	Description
1	[Hatched pattern]	1	middle Pleistocene	☼	○		5Y 4/1	<p>SILTY CLAY</p> <p>Major Lithology: This core consists of dark gray, heavily bioturbated and black (N2/0) mottled silty clay. Between 109 and 120 cm in Section 5, a very fine sand bed occurs below which there is a 17-cm interval of dark gray clay.</p>
2	[Hatched pattern]	2		☼				
3	[Hatched pattern]	3		☼				
4	[Hatched pattern]	4		☼				
5	[Hatched pattern]	5		☼				
6	[Hatched pattern]	6		☼				
7	[Hatched pattern]	7		☼				
8	[Hatched pattern]	8						
9	[Hatched pattern]	9						
		CC				M		



SITE 942 HOLE B CORE 3H

CORED 17.0 - 26.5 mbsf

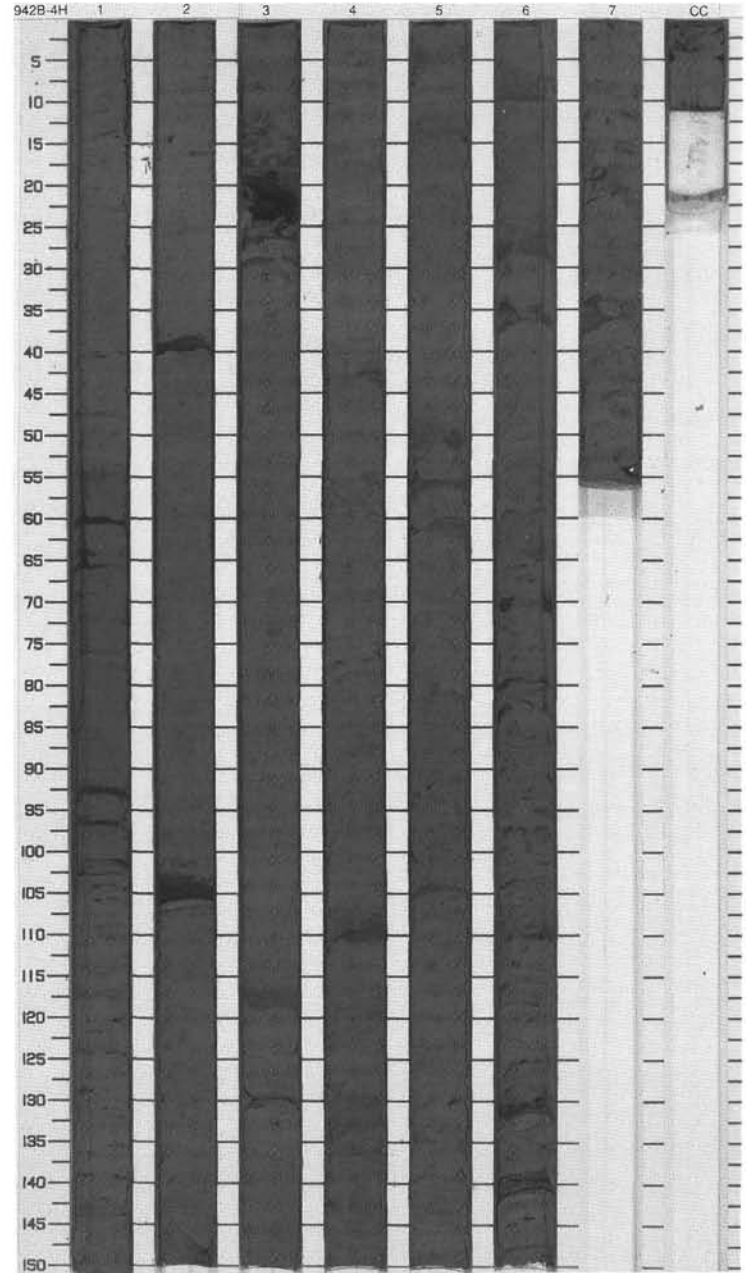
Meter	Graphic Lith.	Section	Age	Structure	Disturb	Sample	Color	Description
1		1			oo			<p>SILTY CLAY WITH SILT LAMINAE AND BEDS OF SILT AND SAND</p> <p>Major Lithology: The dominant sediment in this core is dark gray silty clay. From 50 cm in Section 3 through to the bottom of the core, silty clay is intercalated with silt laminae and thin beds of silt and sand. The intervals void of silt or sand layers are black (N2/0) mottled or faintly black color banded and occasionally contain iron monosulfide micronodules.</p>
2		2						
3		3						
4		3	middle Pleistocene					
5		4						
6		4						
7		5						
8		6						
9		6						
						M	5Y 4/1	



SITE 942 HOLE B CORE 4H CORED 26.5 - 36.0 mbsf

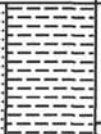
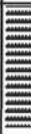
Meter	Graphic Lith.	Section	Age	Structure	Disturb	Sample	Color	Description
1	[Symbol]	1		[Symbol]			5Y 4/1	<p>SILTY CLAY</p> <p>Major Lithology: This core consists of moderately bioturbated, mottled and black (N2/0) color-banded, dark gray silty clay. The silty clay contains thin beds of silt and very fine sand. A gray carbonate-rich interval exists from 103 cm in Section 1 through to 26 cm in Section 2.</p>
2	[Symbol]	2		[Symbol]			5Y 5/1	
3	[Symbol]	3		[Symbol]				
4	[Symbol]	4		[Symbol]				
5	[Symbol]	4	late Pleistocene	[Symbol]				
6	[Symbol]	5		[Symbol]			5Y 4/1	
7	[Symbol]	6		[Symbol]				
8	[Symbol]	6		[Symbol]				
9	[Symbol]	7		[Symbol]				
		CC		[Symbol]		M		

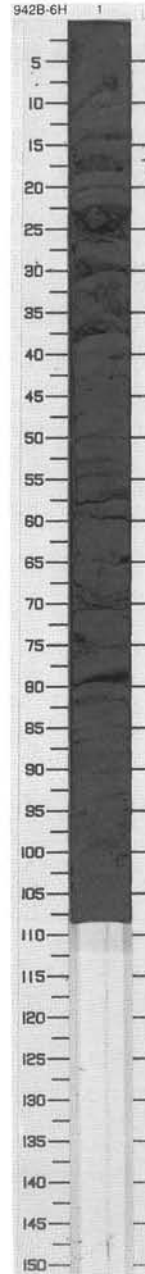
942B 5H NO RECOVERY



SITE 942 HOLE B CORE 6H

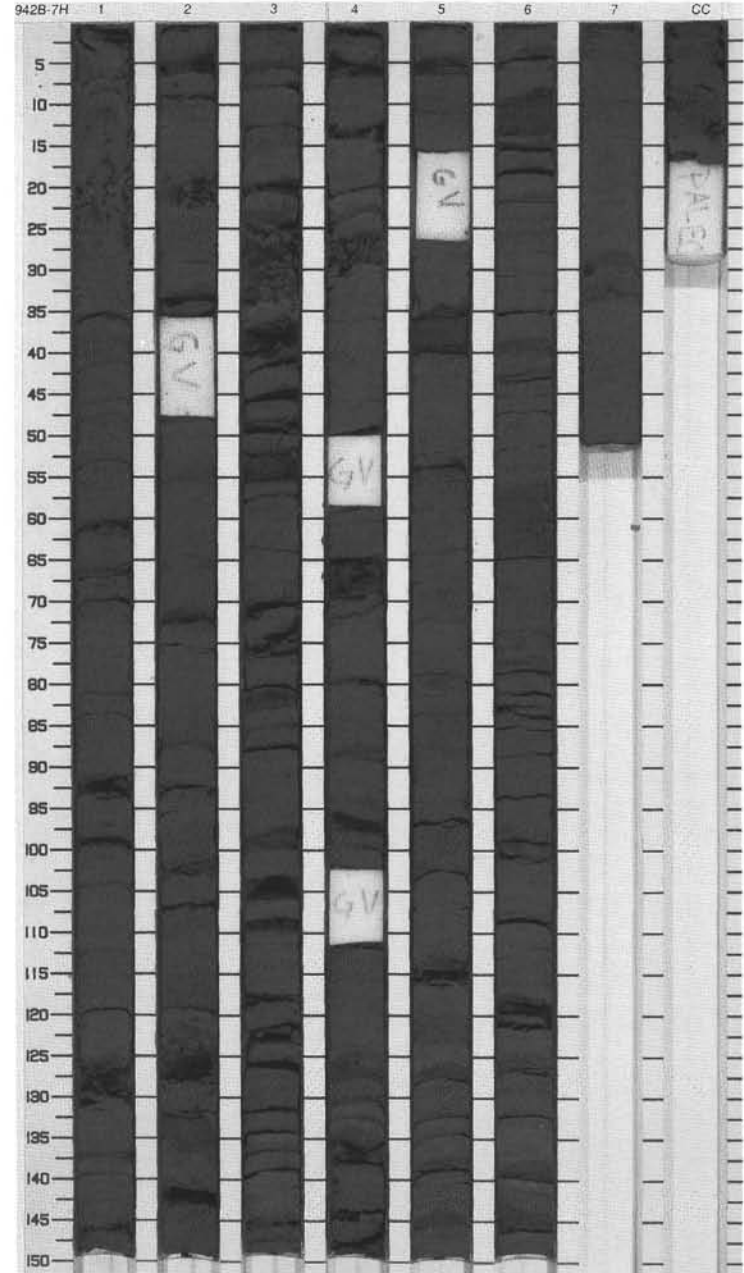
CORED 45.5 - 55.0 mbsf

Meter	Graphic Lith.	Section	Age	Structure	Disturb	Sample	Color	Description
1		1	late Pleist.			M	5G 5/1	SILTY CLAY WITH SILT Major Lithology: This core contains greenish gray silty clay with silt laminae and thin beds of silt and very fine sand.



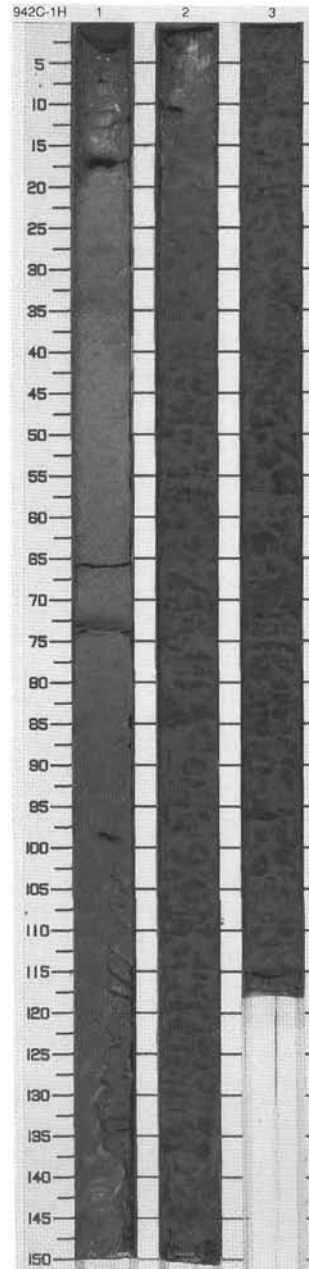
SITE 942 HOLE B CORE 7H CORED 55.0 - 64.5 mbsf

Meter	Graphic Lith.	Section	Age	Structure	Disturb	Sample	Color	Description
1	[Pattern]	1		[Symbol]	W			<p>SILTY CLAY WITH SILT</p> <p>Major Lithology: This core contains dark greenish gray silty clay with laminae and thin beds of silt and very fine sand. Some silty clay intervals between laminae and beds are heavily bioturbated (Sections 1 through 4). Some beds in Sections 4 to 6 are cross-laminated.</p>
2	[Pattern]	2		[Symbol]				
3	[Pattern]	3		[Symbol]				
4	[Pattern]	3		[Symbol]				
5	[Pattern]	4	late Pleistocene	[Symbol]			5Y 4/1	
6	[Pattern]	5		[Symbol]				
7	[Pattern]	5		[Symbol]				
8	[Pattern]	6		[Symbol]				
9	[Pattern]	6		[Symbol]				
	[Pattern]	7		[Symbol]				
	[Pattern]	CC				M		



SITE 942 HOLE C CORE 1H CORED 0.0 - 4.3 mbsf

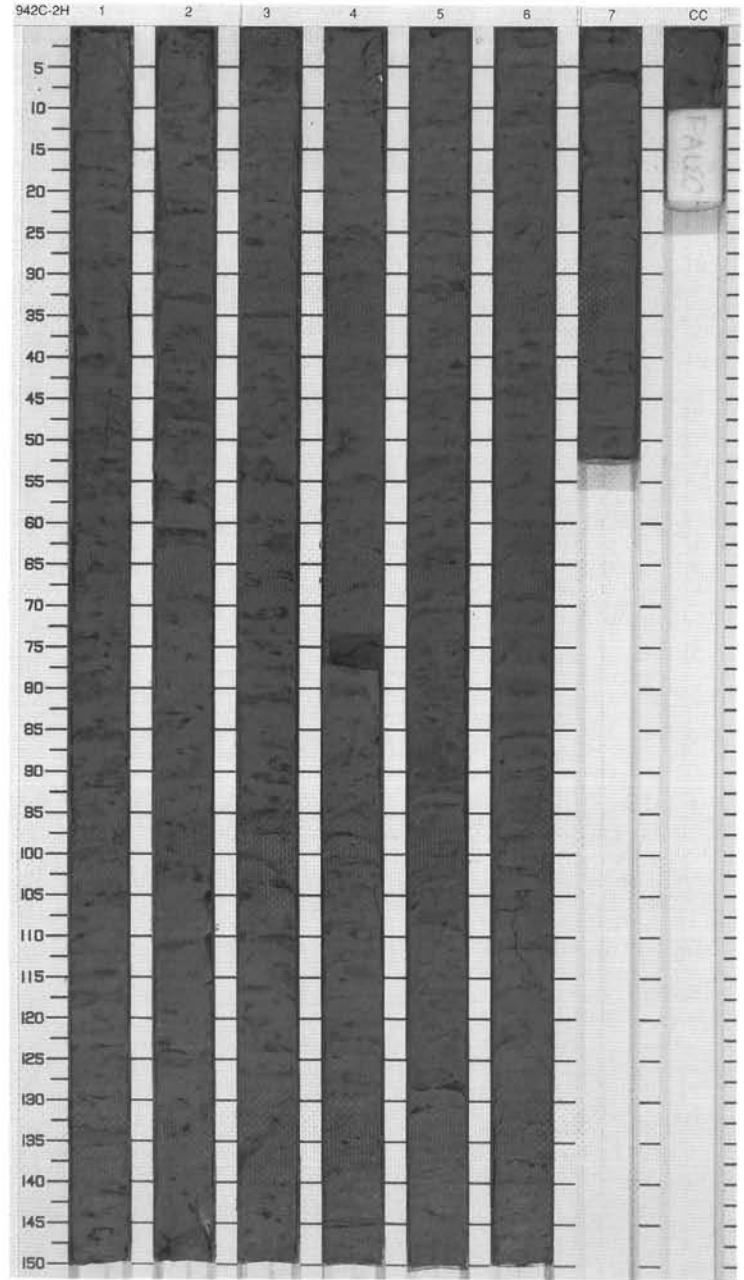
Meter	Graphic Lith.	Section	Age	Structure	Disturb	Sample	Color	Description
1	[Dotted pattern]	1	Holocene	☼			2.5Y 5/4 To 5Y 4/1	<p>CALCAREOUS CLAY, CLAY AND SILTY CLAY</p> <p>Major Lithology: From the top of this core through to the bottom of Section 1, the sediment consists of a light olive brown calcareous-rich clay. The calcareous component is made up of foraminifers and nannofossils. Section 2 consists of heavily bioturbated and mottled clay that grades to silty clay from the top of Section 3 to the bottom of the core.</p>
2	[Dotted pattern]	2	late Pleistocene	☼			5Y 4/1	
3	[Dotted pattern]	3		☼				
4	[Dotted pattern]	3		☼				
	[Dotted pattern]			☼		M		



SITE 942 HOLE C CORE 2H

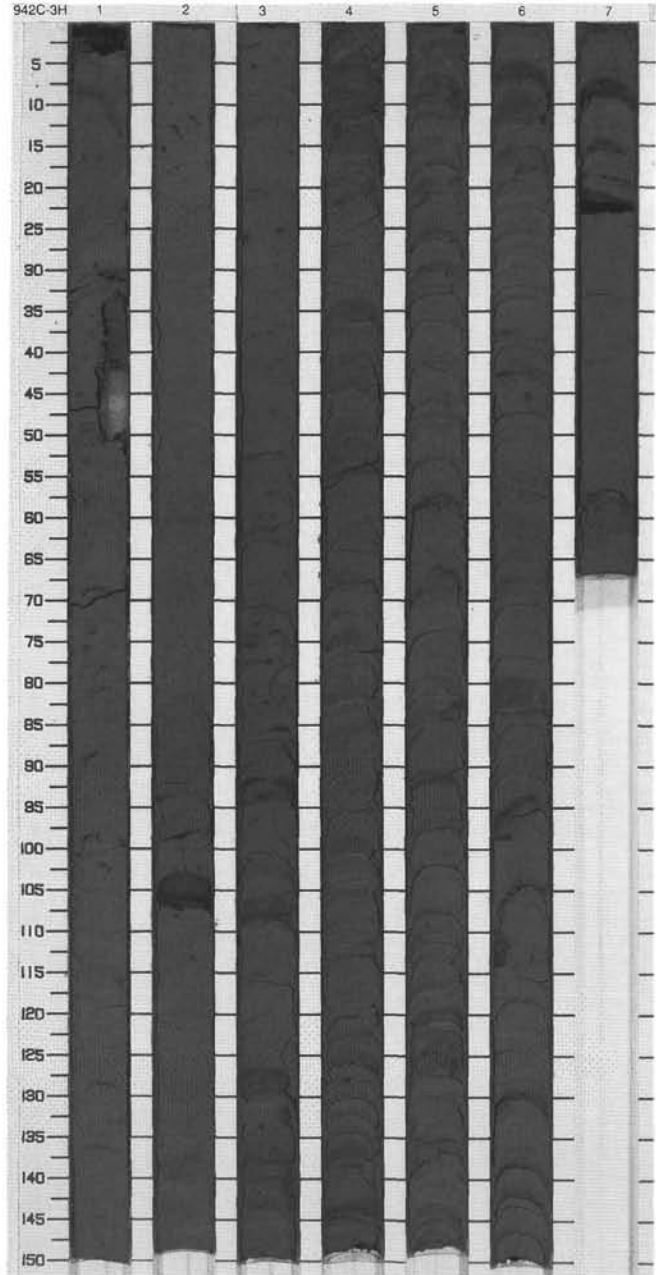
CORED 4.3 - 13.8 mbsf

Meter	Graphic Lith.	Section	Age	Structure	Disturb	Sample	Color	Description
1	[Hatched pattern]	1	late Pleistocene	☼			5Y 4/1	SILTY CLAY Major Lithology: This core consists of heavily bioturbated and black (N2/0) color-mottled dark gray silty clay.
2	[Hatched pattern]	2		☼				
3	[Hatched pattern]	3		☼				
4	[Hatched pattern]	4		☼				
5	[Hatched pattern]	5		☼				
6	[Hatched pattern]	6		☼				
7	[Hatched pattern]	7		☼				
CC		CC				M		



SITE 942 HOLE C CORE 3H CORED 36.0 - 45.5 mbsf

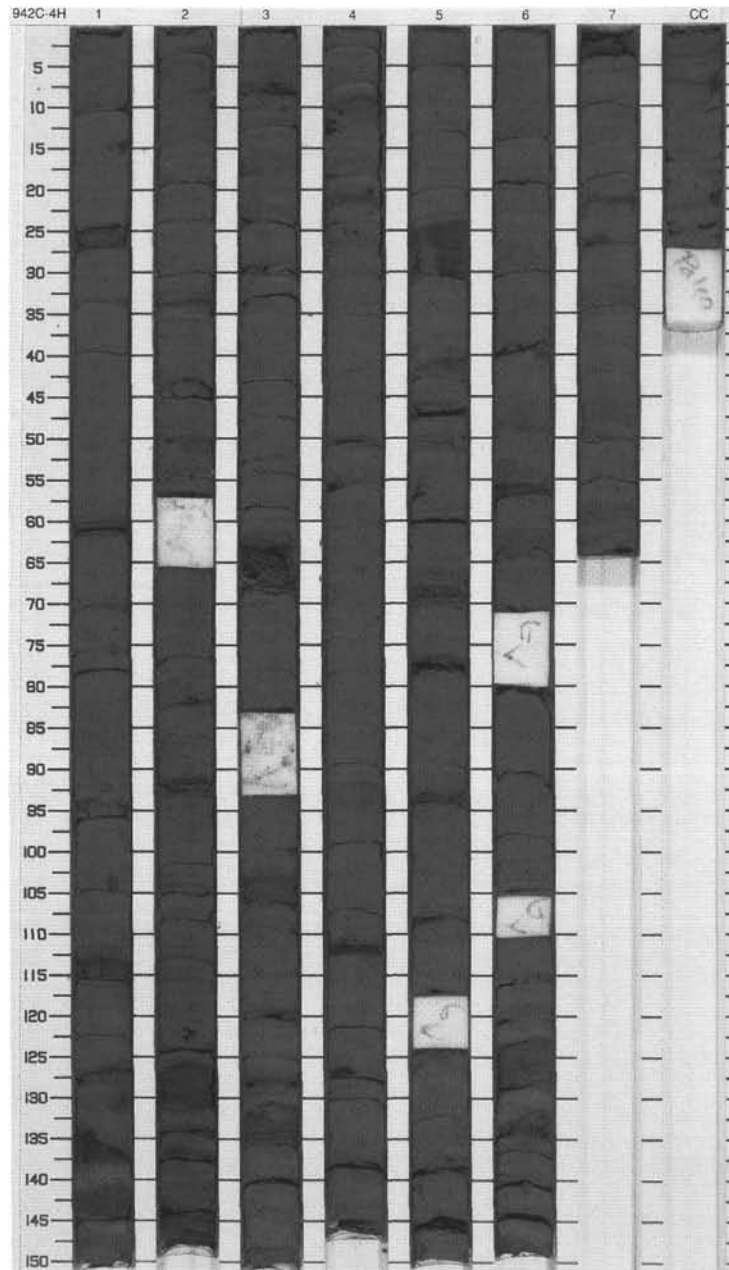
Meter	Graphic Lith.	Section	Age	Structure	Disturb	Sample	Color	Description
1	[Dotted pattern]	1		[Cross-hatch]			5Y 4/1	CALCAREOUS CLAY, SILTY CLAY AND SAND Major Lithology: From 30 cm in Section 1 through to 90 cm in Section 2, dark gray foraminifer nannofossil-bearing clay occurs. Below 90 cm in Section 2 to the bottom of the core, silty clay grades into silty clay containing numerous silt and very fine sand laminae and beds.
2	[Horizontal lines]	2		[Cross-hatch]			5Y 4/1 To 2.5Y 4/2	
3	[Horizontal lines]	3		[Cross-hatch]				
4	[Horizontal lines]	4	late Pleistocene	[Cross-hatch]				
5	[Horizontal lines]	5		[Cross-hatch]				
6	[Horizontal lines]	6		[Cross-hatch]			5Y 3/2	
7	[Horizontal lines]	7		[Cross-hatch]				
8	[Horizontal lines]	8		[Cross-hatch]				
9	[Horizontal lines]	9		[Cross-hatch]				
						M		



SITE 942 HOLE C CORE 4H

CORED 45.5 - 55.0 mbsf

Meter	Graphic Lith.	Section	Age	Structure	Disturb	Sample	Color	Description
1	[Hatched pattern]	1	late Pleistocene	[Symbol]			5Y 4/1	SILTY CLAY AND SAND Major Lithology: This core consists of dark gray silty clay with thin beds and laminae of very fine sand and silt. Many of the beds in the core are cross-laminated.
2	[Hatched pattern]	2		[Symbol]				
3	[Hatched pattern]	3		[Symbol]				
4	[Hatched pattern]	4		[Symbol]				
5	[Hatched pattern]	5		[Symbol]				
6	[Hatched pattern]	6		[Symbol]				
7	[Hatched pattern]	7		[Symbol]				
8	[Hatched pattern]	CC		[Symbol]				
9	[Hatched pattern]			[Symbol]				
10	[Hatched pattern]			[Symbol]				



SITE 942 HOLE C CORE 5H CORED 62.0 - 71.5 mbsf

Meter	Graphic Lith.	Section	Age	Structure	Disturb	Sample	Color	Description
1	[Graphic Lith. 1]	1	late Pleistocene	}}			10Y 5/1 To 5Y 3/2	<p>CARBONATE CLAY AND SILTY CLAY</p> <p>Major Lithology: From the top of this core to 125 cm in Section 1, gray foraminifer-nannofossil-bearing clay occurs; the base of this interval grades into moderately bioturbated and mottled dark olive gray silty clay (base 50 cm in Section 3). The interval between 50 cm in Section 3 to the bottom of the core, consists of faintly black (N2/0) color-banded dark olive gray silty clay.</p>
2	[Graphic Lith. 2]	2		}}				
3	[Graphic Lith. 3]	3		}}				
4	[Graphic Lith. 4]	4	middle Pleistocene	[Structure]			5Y 3/1 To 5Y 3/2	
5	[Graphic Lith. 5]	5		[Structure]				
6	[Graphic Lith. 6]	6		[Structure]				
7	[Graphic Lith. 7]	7		[Structure]				
8	[Graphic Lith. 8]	8		[Structure]				
9	[Graphic Lith. 9]	9		[Structure]			5Y 3/1	
10	[Graphic Lith. 10]	10		[Structure]				
	CC					M		

