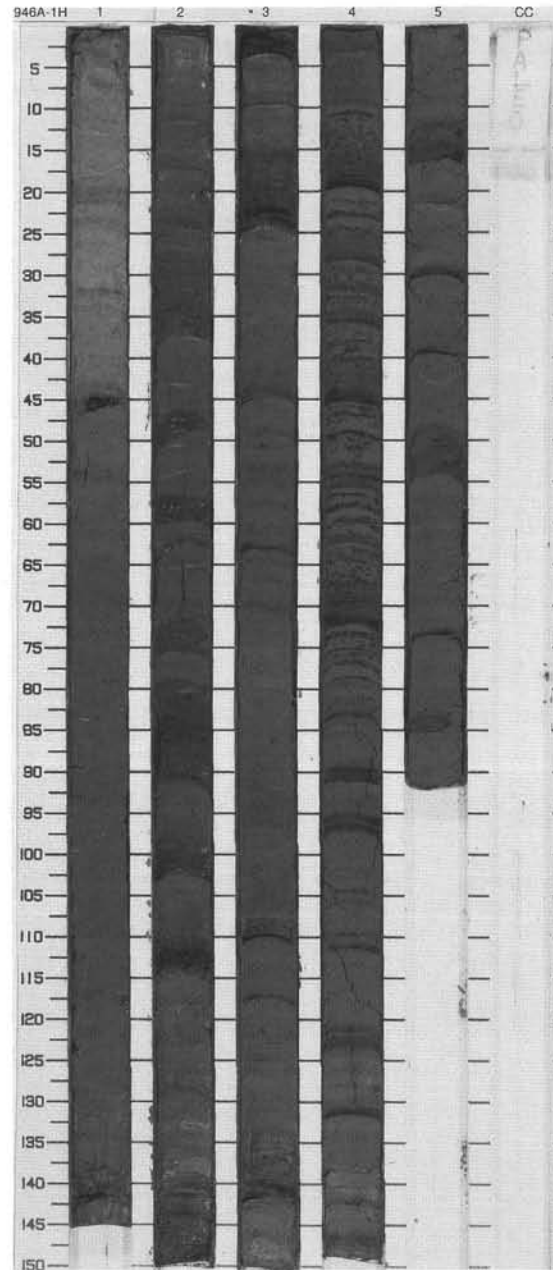


SITE 946 HOLE A CORE 1H

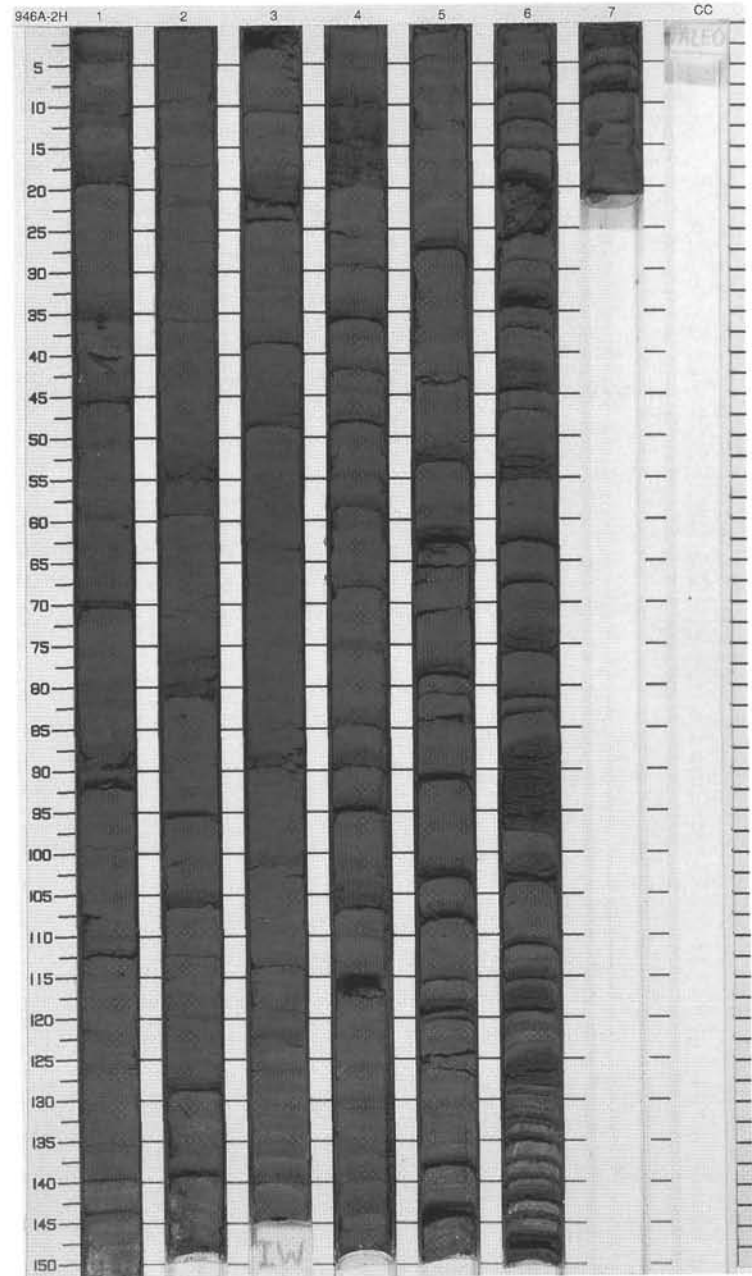
CORED 0.0 - 7.0 mbsf

Meter	Graphic Lith.	Section	Age	Structure	Disturb	Sample	Color	Description
0.0 - 1.0	[Dotted pattern]	1	Holocene	---		S	10YR 6/3	<p>CALCAREOUS CLAY, SILTY CLAY, SILT LAMINAE and SILT AND SAND BEDS</p> <p>Major Lithologies:                      The top 34 cm of this core consists of pale brown calcareous-rich clay. The calcareous component is made up of nannofossils and foraminifers. From 34 to 60 cm in Section 1, grayish brown (10YR 5/2) calcareous clay grades in color to light olive brown clay; this lithology continues to the bottom of Section 1. Between 44-45 cm in Section 1, a dark brown (7.5YR 3/2) semi-indurated iron-rich "crust" occurs. From 27 cm in Section 2 to the bottom of Section 3, thin (1-10-cm-thick) very fine sand beds are intercalated with dark gray silty clay. The interval from the top of Section 4 to the bottom of the core consists of dark gray to very dark gray silty clay that contains silt laminae and thin (1-2-cm-thick) silt beds. Black (N2/0) color mottling is common throughout the core; color banding occurs from the bottom of Section 2 to the bottom of the core.</p>
1.0 - 2.0	[Dotted pattern]	2		~		I	10YR 5/2 To 2.5Y 4/2	
2.0 - 3.0	[Dotted pattern]	3		~		I	2.5Y 3/2 To 5Y 4/1	
3.0 - 4.0	[Dotted pattern]	4	late Pleistocene	~		I	5Y 4/1	
4.0 - 5.0	[Dotted pattern]	5		~		S	5Y 3/2 To 5Y 3/1	
5.0 - 6.0	[Dotted pattern]			~		M		
6.0 - 7.0	[Dotted pattern]			~				



SITE 946 HOLE A CORE 2H CORED 7.0 - 16.5 mbsf

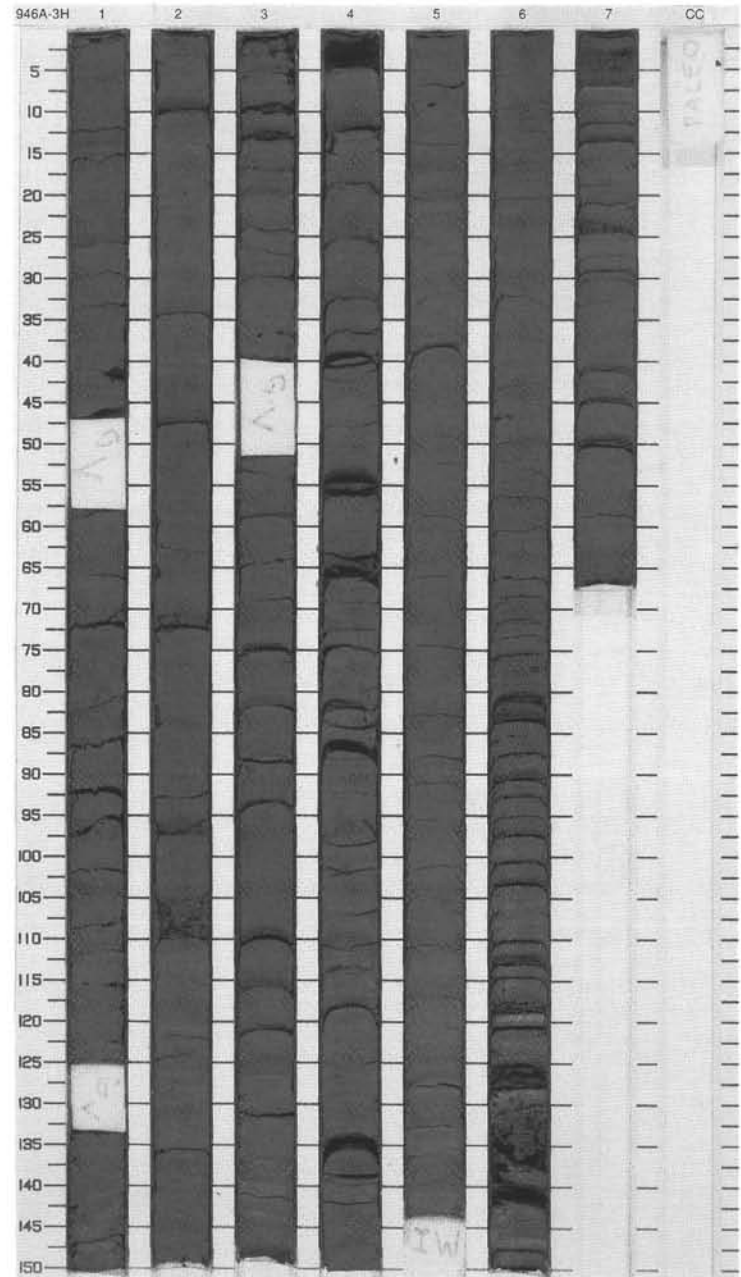
Meter	Graphic Lith.	Section	Age	Structure	Disturb	Sample	Color	Description
1	[Symbol]	1		[Symbol]				<p>SILTY CLAY WITH SILT LAMINAE AND BEDS</p> <p>Major Lithology: Very dark gray to dark gray silty clay is intercalated with silt laminae and thin (1- to 10-cm-thick) silt beds in this core. The occurrence of iron monosulfide is associated with black (N2/0) color banding and mottling.</p>
2	[Symbol]	2		[Symbol]				
3	[Symbol]	3		[Symbol]			5Y 3/1 To 5Y 4/1	
4	[Symbol]	4	late Pleistocene	[Symbol]				
5	[Symbol]	5		[Symbol]				
6	[Symbol]	6		[Symbol]			5Y 4/1	
7	[Symbol]	7		[Symbol]				
8	[Symbol]	8		[Symbol]				
9	[Symbol]	9		[Symbol]				
						M		



SITE 946 HOLE A CORE 3H

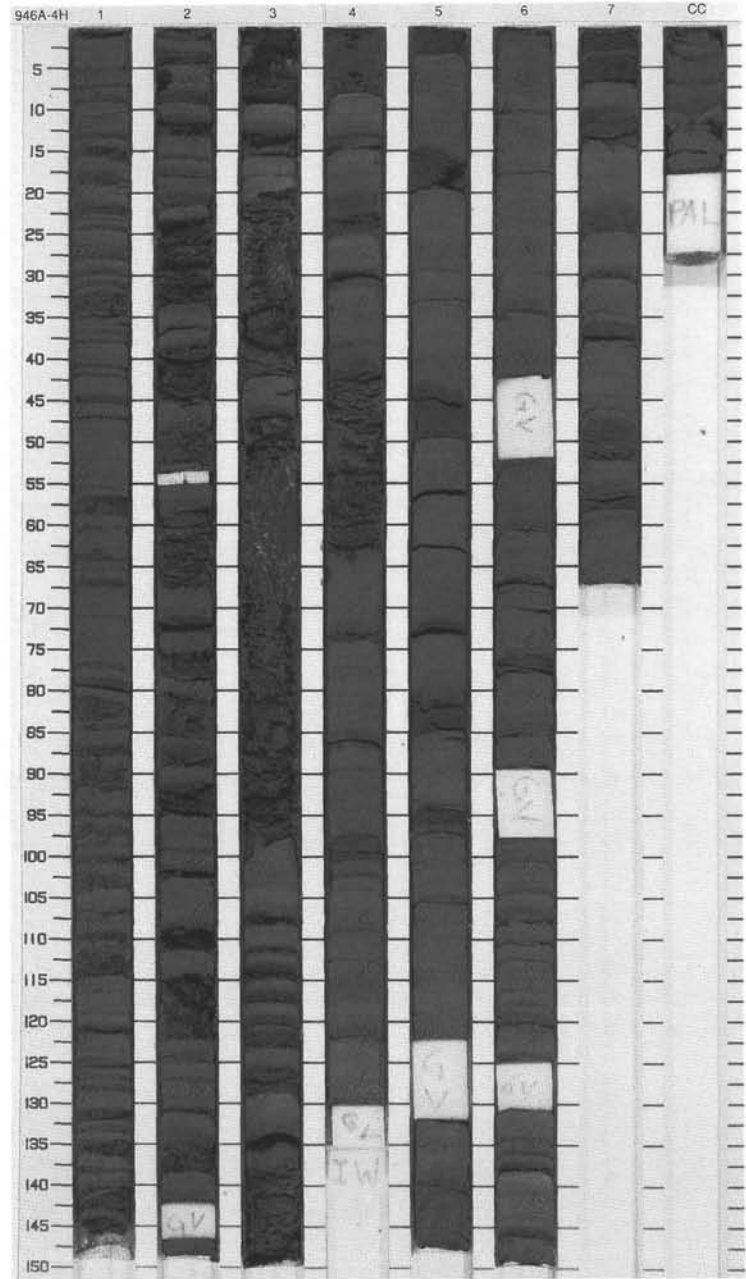
CORED 16.5 - 26.0 mbsf

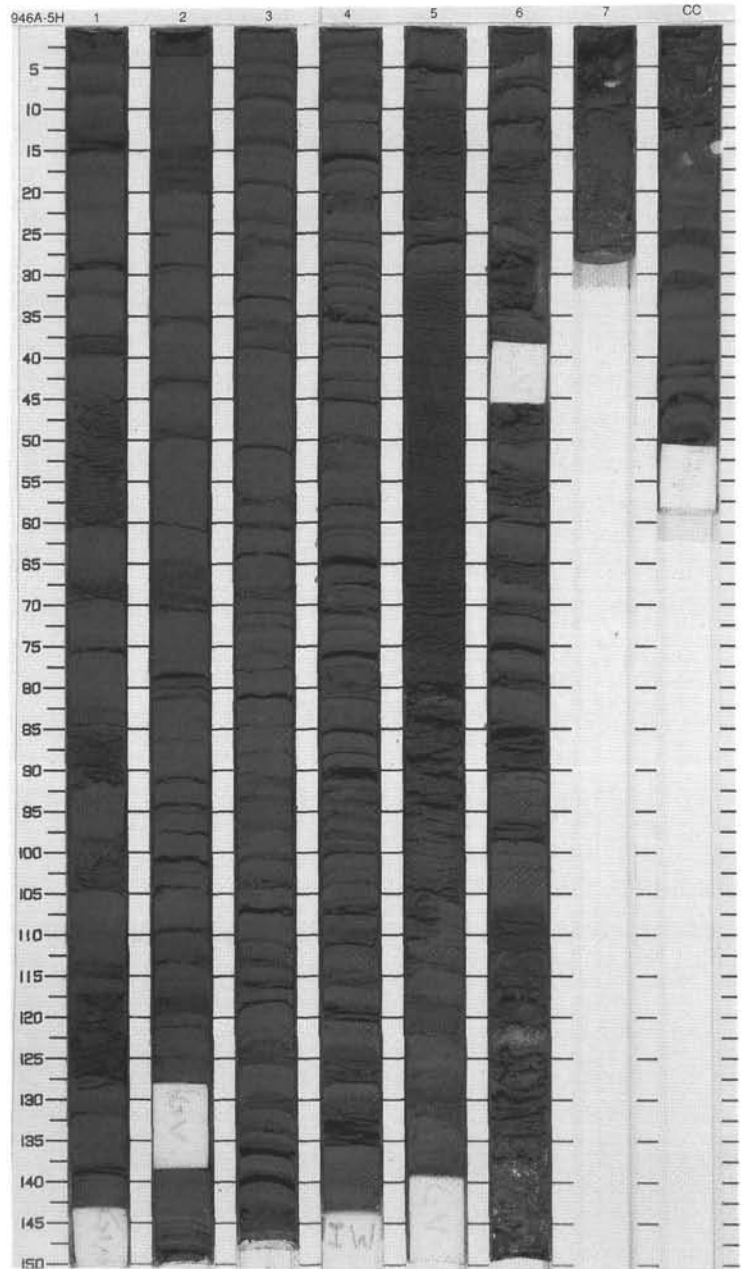
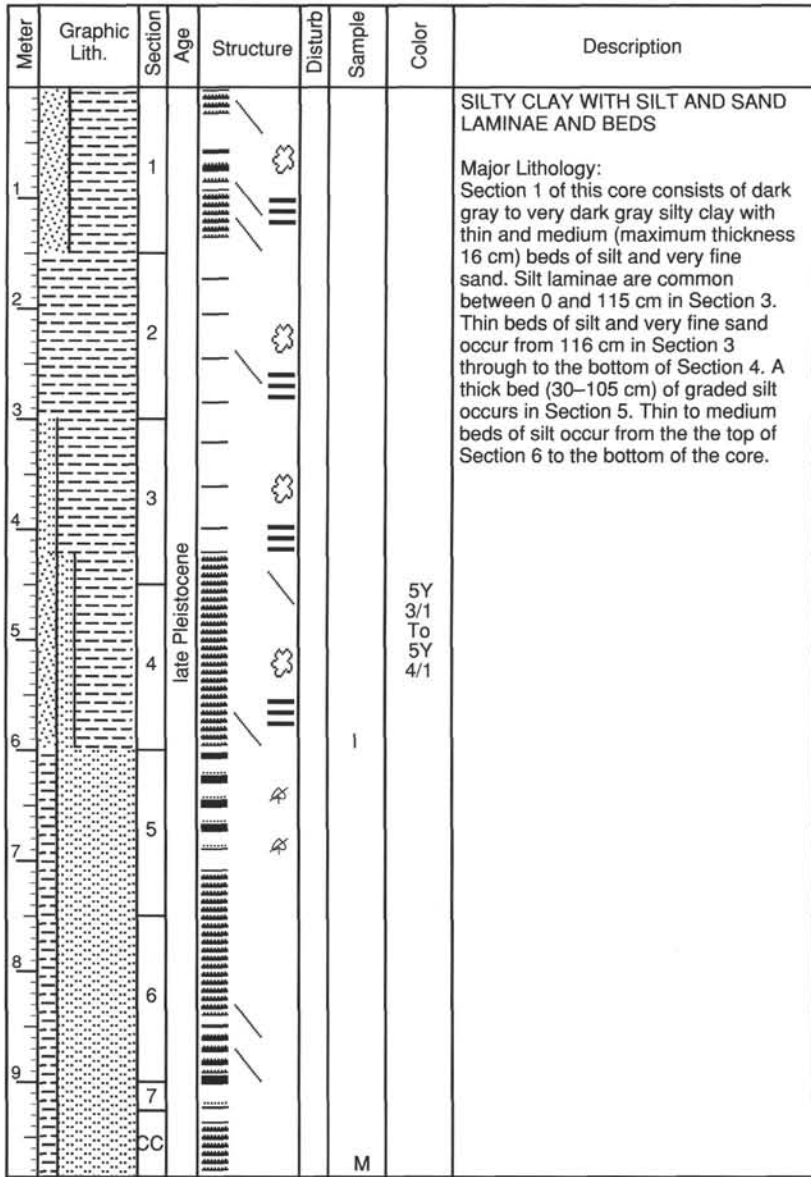
Meter	Graphic Lith.	Section	Age	Structure	Disturb	Sample	Color	Description
1	[Symbol]	1		[Symbol]			5Y 3/2	<p>SILTY CLAY WITH SILT LAMINAE AND BEDS</p> <p>Major Lithology:                      Very dark gray to dark gray silty clay is the dominant sediment in this core. The silty clay is intercalated with numerous silt laminae and thin silt beds, especially in Sections 1, 6, and 7. A bed of very fine sand occurs in Section 6 at 135 cm. Iron monosulfide produces black (N2/0) mottling and banding throughout.</p>
2	[Symbol]	2		[Symbol]	W		To 5Y 4/2	
3	[Symbol]	3		[Symbol]				
4	[Symbol]	4	late Pleistocene	[Symbol]				
5	[Symbol]	5		[Symbol]				
6	[Symbol]	6		[Symbol]			5Y 3/1	
7	[Symbol]	7		[Symbol]			To 5Y 4/1	
8	[Symbol]			[Symbol]				
9	[Symbol]			[Symbol]				
		CC						



SITE 946 HOLE A CORE 4H CORED 26.0 - 35.5 mbsf

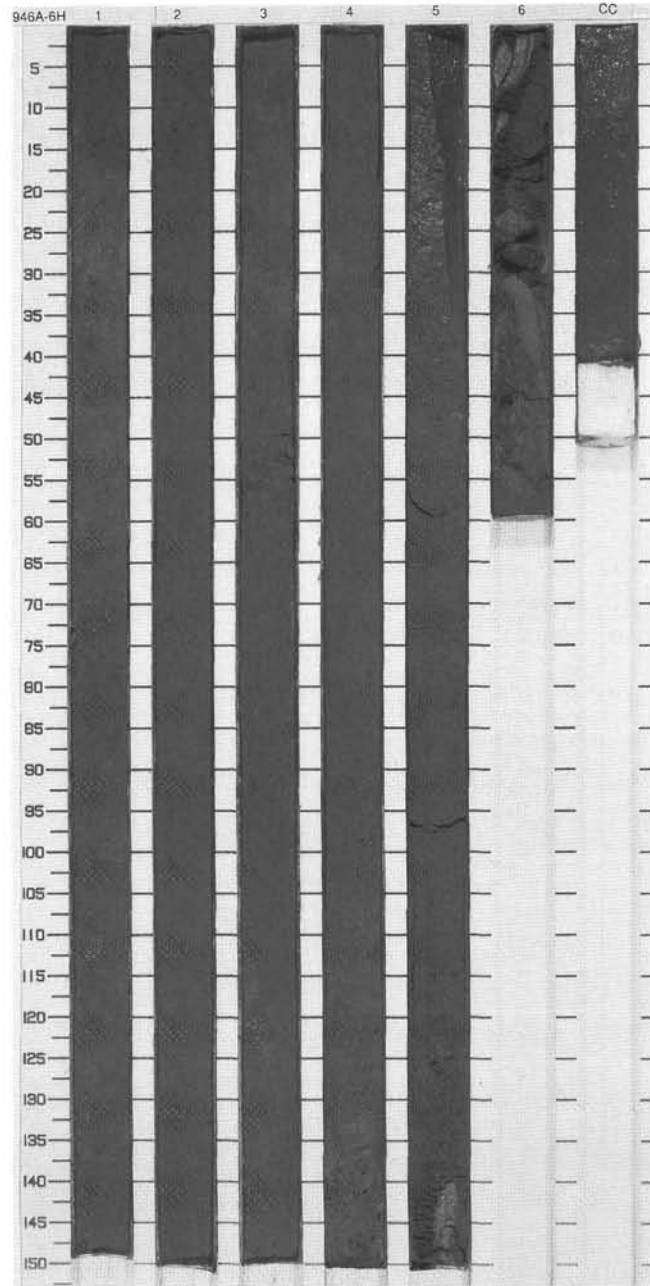
Meter	Graphic Lith.	Section	Age	Structure	Disturb	Sample	Color	Description
1	[Hatched pattern]	1		[Symbol]				<p>SILTY CLAY WITH SILT AND SAND</p> <p>Major Lithology:                      This core consists of dark gray to very dark gray silty clay with thin beds of silt and thin to thick (maximum 53-cm-thick) beds of very fine sand. The sand beds are graded. Some of the very fine sand beds in Section 4 have a "honeycomb"-type structure, which may be the remnant of a hydrate. Section 4 contains an interval of black (N2/0) color-banded silty clay that is slightly bioturbated.</p>
2	[Hatched pattern]	2		[Symbol]				
3	[Hatched pattern]	3		[Symbol]				
4	[Hatched pattern]	4	late Pleistocene	[Symbol]			5Y 3/1 To 5Y 4/1	
5	[Hatched pattern]	5		[Symbol]				
6	[Hatched pattern]	6		[Symbol]				
7	[Hatched pattern]	7		[Symbol]				
9	[Hatched pattern]	CC				M		





SITE 946 HOLE A CORE 6H CORED 45.0 - 54.5 mbsf

Meter	Graphic Lith.	Section	Age	Structure	Disturb	Sample	Color	Description	
1		1	late Pleistocene					<p><b>MASSIVE SAND AND MUD CLASTS</b></p> <p><b>Major Lithology:</b> This core consists of dark grayish brown massive fine-grained sand. Section 6 contains clay clasts.</p> <p><b>General Description:</b> The sand in this core has been sucked in by piston coring, and, as such, the primary fabric and the interval recovered do not represent the true in-situ lithology of the cored interval.</p>	
2		2							
3		3							
4		4							2.5Y 4/2
5		5							
6		6				◆			
7		7				◆			
8		8				◆			
	CC					M			

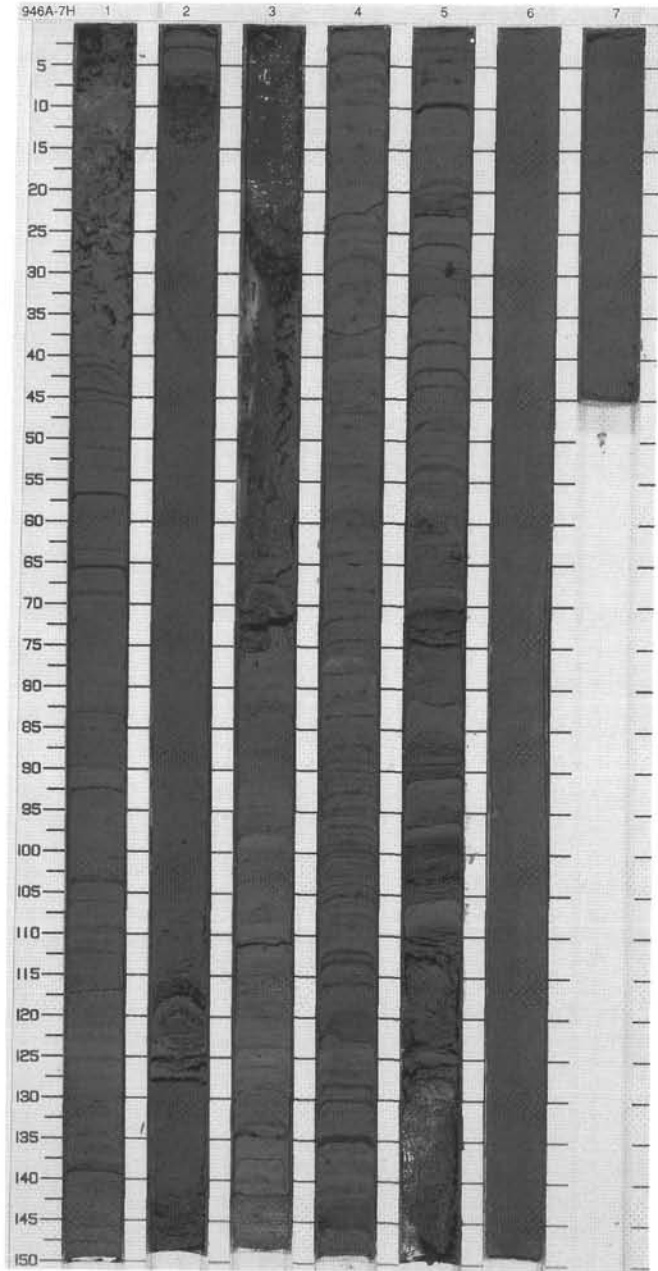




SITE 946 HOLE A CORE 7H

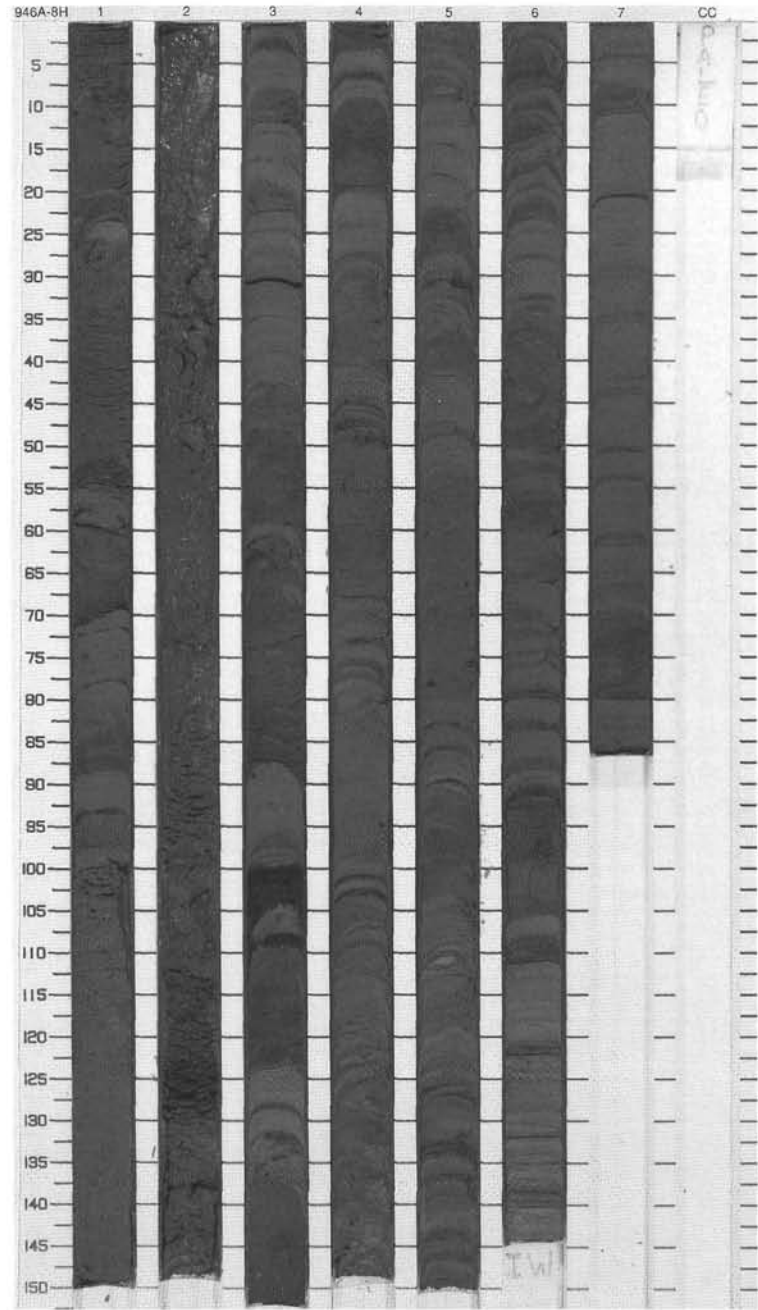
CORED 54.5 - 64.0 mbsf

Meter	Graphic Lith.	Section	Age	Structure	Disturb	Sample	Color	Description
1	[Hatched pattern]	1		[Wavy lines]	oo		5Y 4/1	<p>SILTY CLAY AND SAND</p> <p>Major Lithology: This core consists of dark gray bioturbated and mottled silty clay that contains silt laminae and dark grayish brown massive, thin- and medium-bedded, fine to very fine-grained sand.</p>
2	[Dotted pattern]	2		[Diagonal lines]			2.5Y 4/2	
3	[Dotted pattern]	3		[Wavy lines, diamonds]				
4	[Hatched pattern]	4	late Pleistocene	[Wavy lines, diamonds]				
5	[Hatched pattern]	5		[Wavy lines]			5Y 3/1 To 5Y 4/1	
6	[Hatched pattern]	6		[Wavy lines]				
7	[Hatched pattern]	7		[Wavy lines]				
8	[Dotted pattern]	8		[Diagonal lines]			2.5Y 4/2	
9	[Dotted pattern]	9		[Diagonal lines]				
						M		



SITE 946 HOLE A CORE 8H CORED 64.0 - 73.5 mbsf

Meter	Graphic Lith.	Section	Age	Structure	Disturb	Sample	Color	Description
1	[Dotted pattern]	1		◆			2.5Y 4/2	<p>SAND AND SILTY CLAY</p> <p>Major Lithology:                      The top 3 m of this core consists of dark grayish brown massive fine sand that contains isolated mud clasts.                      From 3 m to the bottom of Section 4, very dark gray silty clay containing silt laminae and thin to medium beds of silt and very fine sand occur. From the top of Section 5 to the bottom of the core, the dominant lithology consists of dark gray silty clay with silt laminae and thin beds of silt.</p>
2		2		◆				
3	[Horizontal line pattern]	3		↗		5Y 3/1		
4		4		◆		2.5Y 4/2 To 5Y 3/1		
5	[Horizontal line pattern]	5	late Pleistocene	↗				
6		6		◆				
7	[Horizontal line pattern]	7		↗		5Y 4/1		
8		8		◆				
9	[Horizontal line pattern]	9		↗				
10		10		◆				
								I
								M

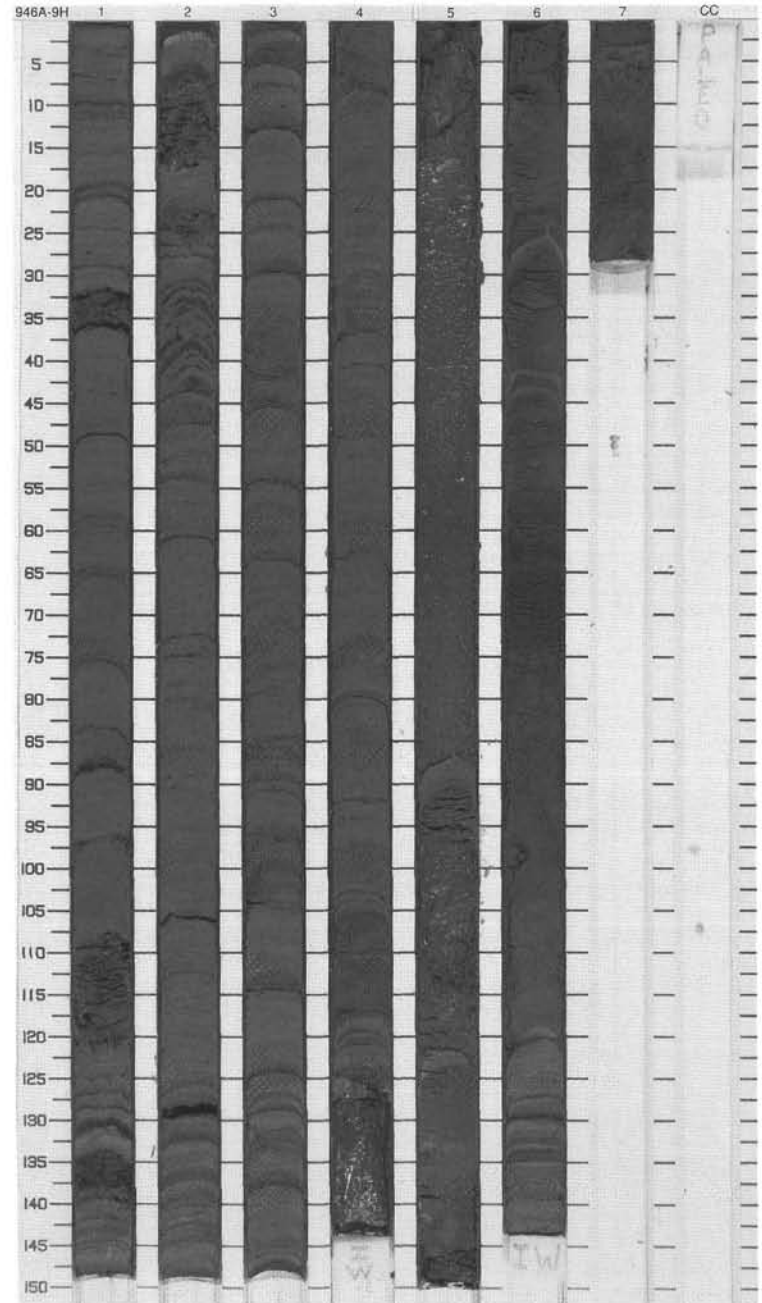




SITE 946 HOLE A CORE 9H

CORED 73.5 - 83.0 mbsf

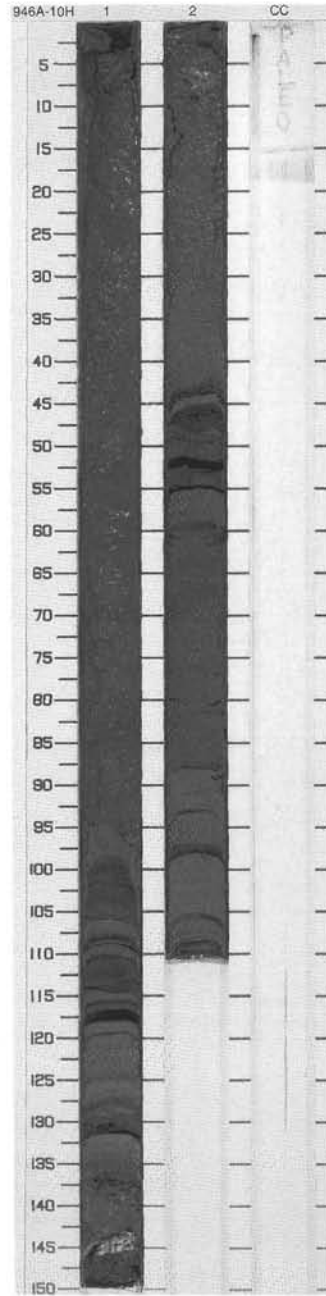
Meter	Graphic Lith.	Section	Age	Structure	Disturb	Sample	Color	Description
1	[Hatched pattern]	1		[Symbol]			5Y 3/1	<p>SILTY CLAY AND SAND</p> <p>Major Lithology: This core consists of dark gray to very dark gray, black (N2/0) color-mottled, silty clay with laminae and thin beds of silt. The silty clays alternate with intervals of dark grayish brown, thin, medium and thick to massive very fine sand beds. Some of the thicker beds are graded.</p>
2	[Dotted pattern]	2		[Symbol]			5Y 3/1 To 5Y 4/1	
3	[Hatched pattern]	3		[Symbol]			5Y 3/1 To 5Y 4/1	
4	[Hatched pattern]	3		[Symbol]			5Y 3/1 To 5Y 4/1	
5	[Hatched pattern]	4	late Pleistocene	[Symbol]			5Y 4/1	
6	[Dotted pattern]	5		[Symbol]			5Y 4/1	
7	[Dotted pattern]	5		[Symbol]			5Y 4/1	
8	[Dotted pattern]	6		[Symbol]			2.5Y 3/2	
9	[Dotted pattern]	6		[Symbol]			2.5Y 3/2	
9.25	[Dotted pattern]	7		[Symbol]			2.5Y 3/2	



SITE 946 HOLE A CORE 10H

CORED 83.0 - 92.5 mbsf

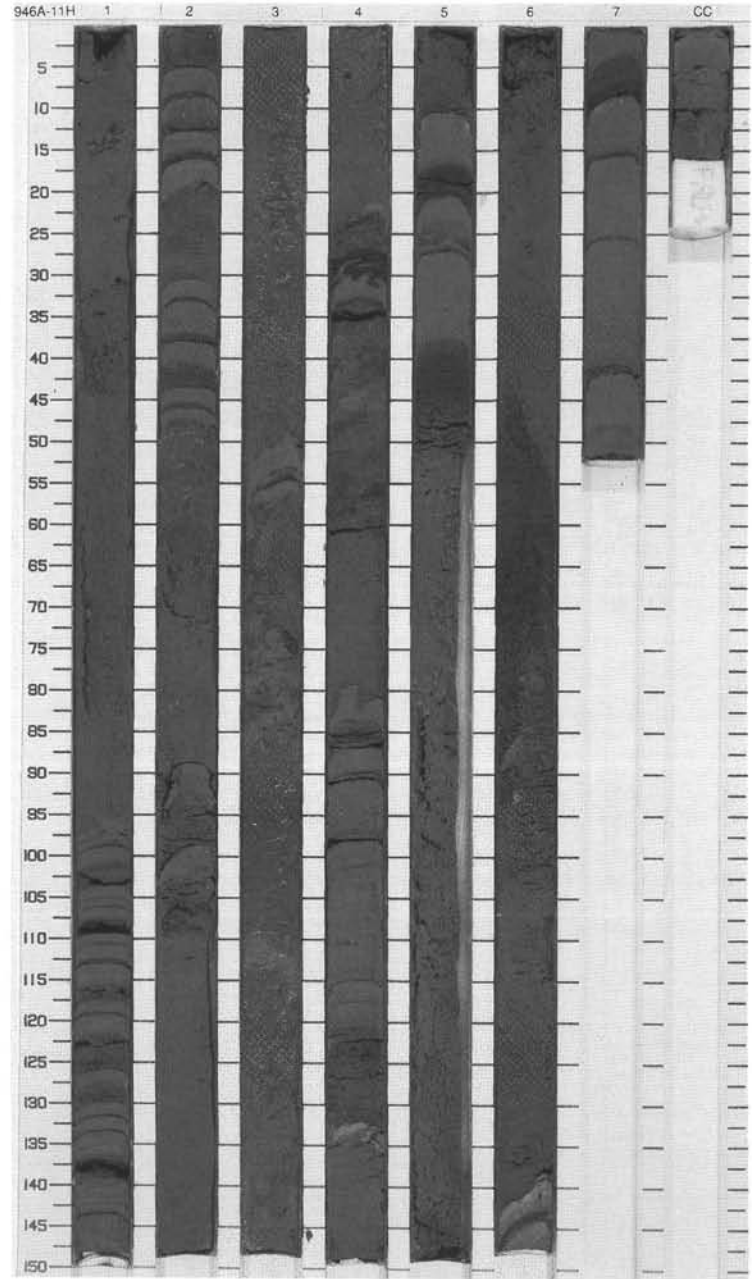
Meter	Graphic Lith.	Section	Age	Structure	Disturb	Sample	Color	Description
1		1	late Pleistocene				2.5Y 3/2 To 5Y 3/1	<p>SAND, SILT AND SILTY CLAY</p> <p>Major Lithology: This core consists of very dark gray silty clay with silt laminae and thin beds of silt. The silty clay alternates with dark grayish brown thin- to medium-bedded, very fine sand and silt.</p>
2		2						
						M		



SITE 946 HOLE A CORE 11H

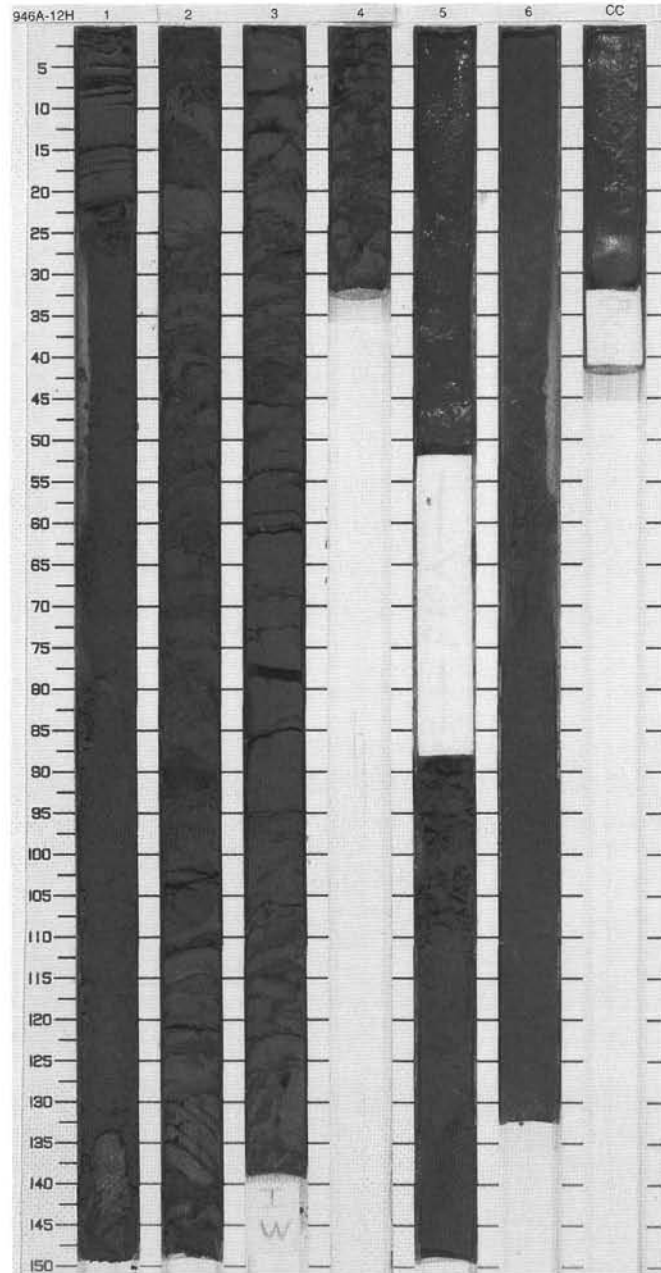
CORED 92.5 - 102.0 mbsf

Meter	Graphic Lith.	Section	Age	Structure	Disturb	Sample	Color	Description
1	[Dotted pattern]	1		[Horizontal lines]				<p><b>SAND AND SILT BEDS</b></p> <p>Major Lithology: This core consists of dark grayish brown, thin to thick (maximum 95-cm-thick) beds of very fine sand and silt. Beds in the interval between 80 cm in Section 3 and 82 cm in Section 4 contain (approximately 1-10-cm-diameter) mud clasts. A few thin (&lt;50-cm) intervals of very dark gray silty clay with silt laminae occur throughout the core.</p>
2	[Dotted pattern]	2		[Horizontal lines]				
3	[Dotted pattern]	3		[Horizontal lines]				
4	[Checkered pattern]	4		[Horizontal lines]				
5	[Checkered pattern]	4	late Pleistocene	[Horizontal lines]			2.5Y 4/2 To 5Y 3/2	
6	[Dotted pattern]	5		[Horizontal lines]				
7	[Dotted pattern]	6		[Horizontal lines]				
8	[Dotted pattern]	7		[Horizontal lines]				
9	[Dotted pattern]	7		[Horizontal lines]				
	[Dotted pattern]	CC					M	



SITE 946 HOLE A CORE 12H CORED 102.0 - 111.5 mbsf

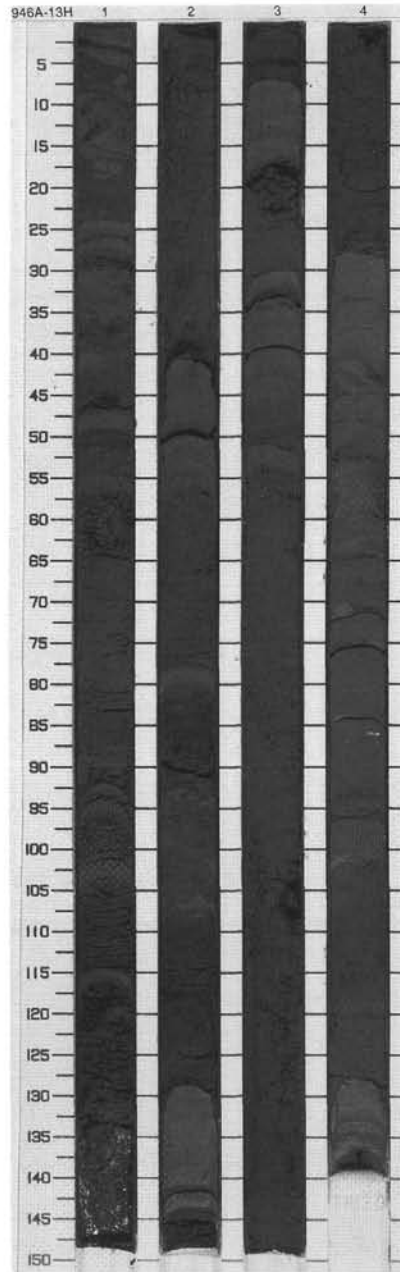
Meter	Graphic Lith.	Section	Age	Structure	Disturb	Sample	Color	Description
1	[Dotted pattern]	1		—		S	2.5Y 3/2	<b>SAND AND MUD CLASTS</b> Major Lithology: This core consists of very dark grayish brown and fine-, medium-, and coarse-grained sand. The interval from 130 cm in Section 1 to the bottom of Section 4 contains a chaotic assemblage of numerous small- to medium-sized, very dark gray mud clasts in a poorly sorted sandy matrix.
2	[Checkerboard pattern]	2		◆		I	2.5Y 3/2 To 5Y 3/2	
3	[Dotted pattern]	3	late Pleistocene	◆				
4	[Checkerboard pattern]	4		◆				
5	[Dotted pattern]	5					2.5Y 3/2	
6	[Dotted pattern]	6						
7	[Dotted pattern]	6						
8	[Dotted pattern]	CC				M		












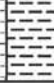

SITE 946 HOLE A CORE 13H

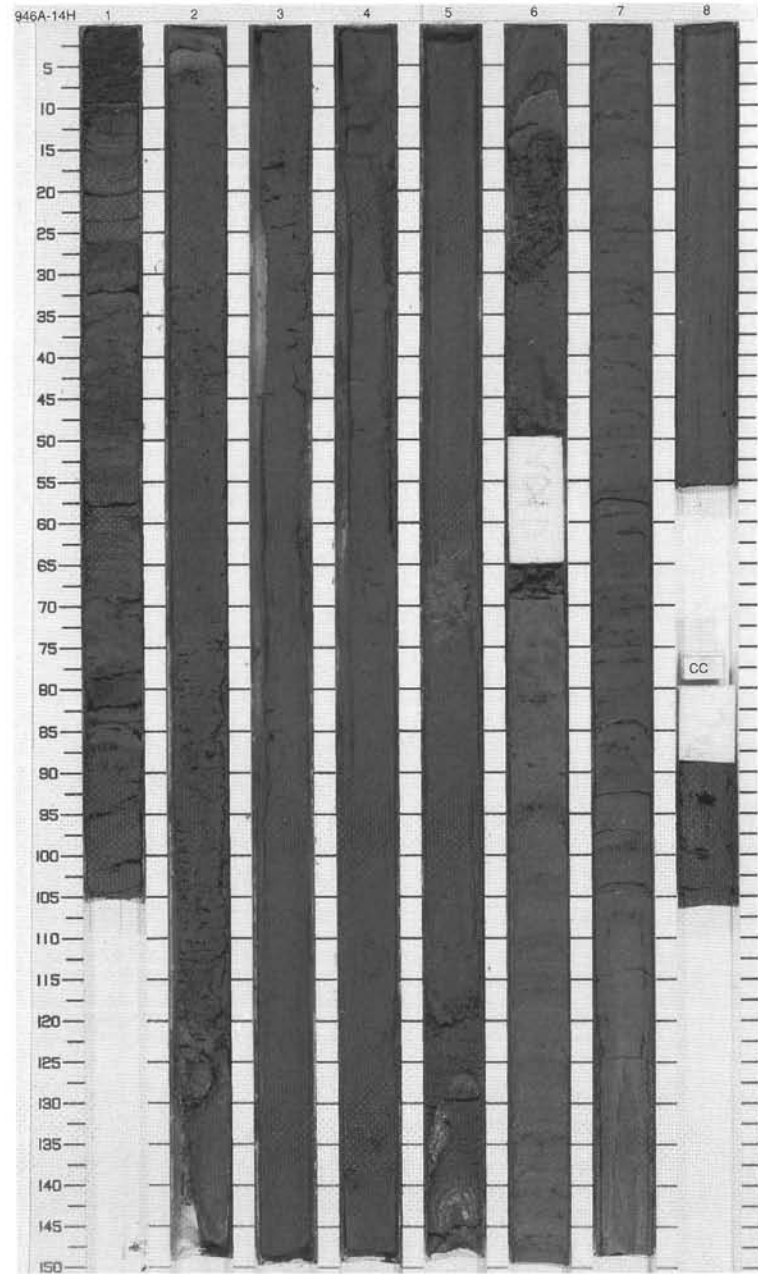
CORED 111.5 - 121.0 mbsf

Meter	Graphic Lith.	Section	Age	Structure	Disturb	Sample	Color	Description
0-1	Checkered pattern	1	late Pleistocene	◆ ◆	—		5Y 3/2 To 2.5Y 3/2	<p>SAND, SILTY CLAY, SILT AND MUD CLASTS</p> <p>Major Lithology: This core contains very dark grayish brown, thin- to thick-bedded medium to fine sand. Some of the beds contain a chaotic assemblage of mud clasts. Two intervals of very dark gray silty clay containing laminae and thin beds of silt occur between 0 and 50 cm in Section 3 and between 25 and 100 cm in Section 4.</p>
1-2	Dotted pattern	2		◆ ◆ ◆	○			
2-3	Checkered pattern	3		◆ ◆ ◆	○			
3-4	Horizontal dashed lines	4		◆ ◆ ◆	○			
4-5	Horizontal dashed lines	4		○				
						M		



SITE 946 HOLE A CORE 14H CORED 121.0 - 130.5 mbsf

Meter	Graphic Lith.	Section	Age	Structure	Disturb	Sample	Color	Description
1		1		◆	wwwwww			<p>SAND, SILTY CLAY AND MUD CLASTS</p> <p>Major Lithology: The top 100 cm of this core consists of highly disturbed (as a result of core recovery) sand and mud clasts. From the top of Section 2 through 65 cm in Section 6, very dark grayish brown massive fine sand with occasional mud clasts occurs. From 65 cm in Section 6 to the bottom of the core, dark gray silty clay with silt laminae is the dominant lithology.</p>
2		2		◆	oooooooo		2.5Y 3/2	
3		3			oooooooo			
4		4	late Pleistocene		oooooooo			
5		5		◆	oooooooo			
6		6		◆	oooooooo			
7		7		◆	oooooooo			
8		8		☼	oooooooo			
9		9		☼	oooooooo		5Y 4/1	
10		10		☼	wwwwww			
CC		CC		☼	wwwwww	M		

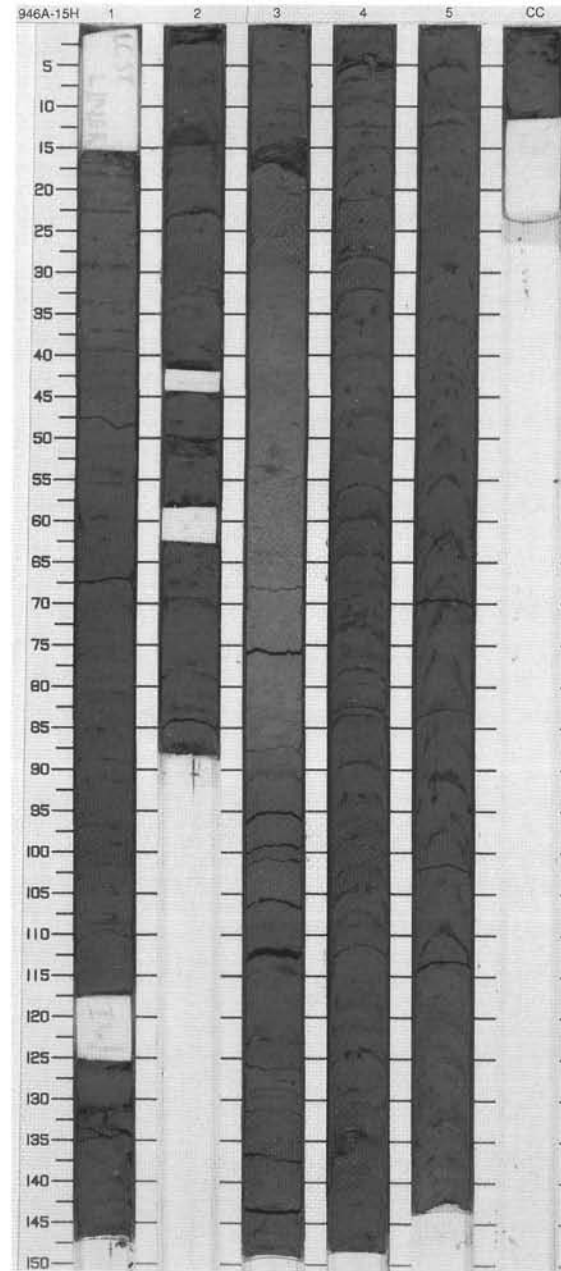




SITE 946 HOLE A CORE 15H

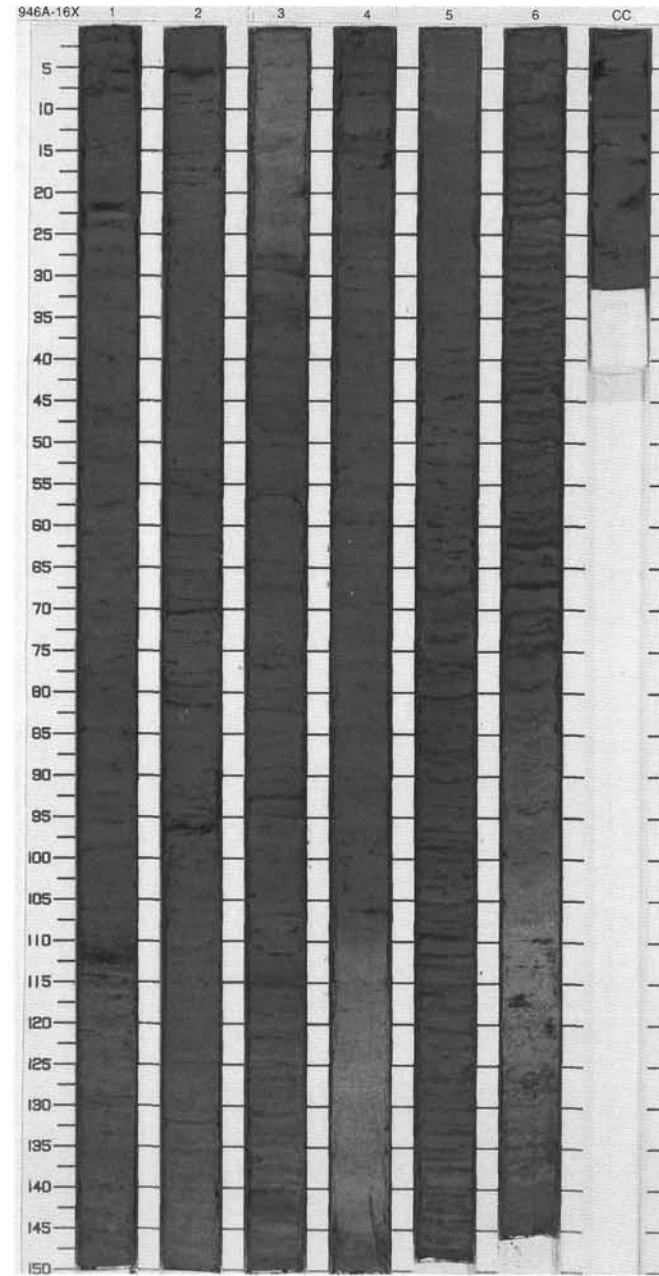
CORED 130.5 - 140.0 mbsf

Meter	Graphic Lith.	Section	Age	Structure	Disturb	Sample	Color	Description
1	[Hatched pattern]	1	late Pleistocene	[Symbol]		I	2.5Y N3/0 To 5Y 3/1	SILTY CLAY AND CALCAREOUS CLAY  Major Lithology: This core consists of very dark gray, heavily bioturbated and mottled silty clay. Silt laminae and thin beds of silt are common throughout. Between 38 and 88 cm in Section 3, an interval of dark gray carbonate-rich clay occurs. The carbonate fraction consists of nannofossils and foraminifers.
2	[Hatched pattern]	2		[Symbol]				
3	[Hatched pattern]	3		[Symbol]				
4	[Hatched pattern]	4		[Symbol]				
5	[Hatched pattern]	4		[Symbol]				
6	[Hatched pattern]	5		[Symbol]				
7	[Hatched pattern]	5		[Symbol]				
		CC		[Symbol]			5Y 4/1	
							2.5Y N3/0 To 5Y 3/1	
							5Y 3/1	



SITE 946 HOLE A CORE 16X CORED 140.0 - 149.6 mbsf

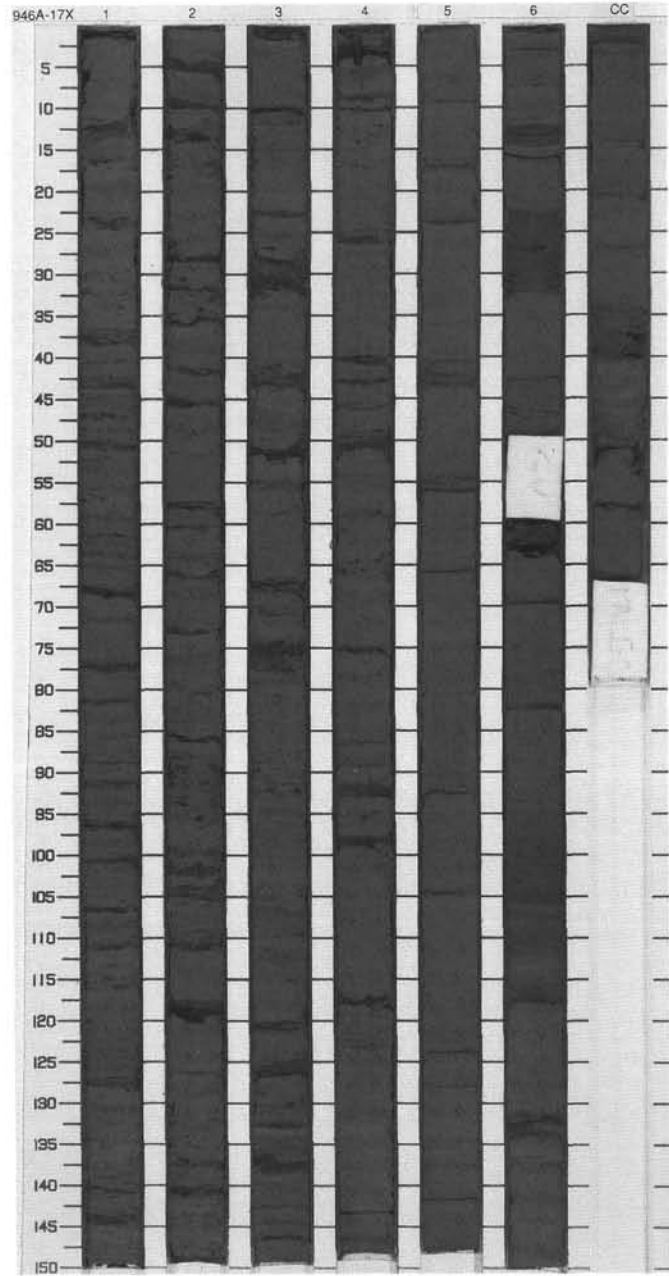
Meter	Graphic Lith.	Section	Age	Structure	Disturb	Sample	Color	Description
1	[Dotted pattern]	1	late Pleistocene	[Symbol]			5Y 4/1 To 5GY 4/1	<p><b>CALCAREOUS CLAY AND SILTY CLAY</b></p> <p>Major Lithology: This core consists of dark gray and dark greenish gray calcareous clay and dark gray to very dark gray silty clay and calcareous silty clay. The calcareous component consists of foraminifers and nannofossils. Between 67 cm in Section 5 and 100 cm in Section 6, dark gray silty clay with numerous silt laminae occurs. Below 100 cm in Section 6 to the bottom of the core, calcareous silty clay is the dominant lithology.</p>
2	[Dotted pattern]	2		[Symbol]				
3	[Dotted pattern]	3		[Symbol]			5Y 5/1	
4	[Dotted pattern]	4		[Symbol]				
5	[Dotted pattern]	5		[Symbol]			5Y 5/1 To 5GY 4/1	
6	[Dotted pattern]	6		[Symbol]				
7	[Dotted pattern]	7		[Symbol]				
8	[Dotted pattern]	8		[Symbol]			5GY 5/1 To 5GY 4/1	
9	[Dotted pattern]	9		[Symbol]			5GY 3/1	
		CC				M		



SITE 946 HOLE A CORE 17X

CORED 149.6 - 159.2 mbsf

Meter	Graphic Lith.	Section	Age	Structure	Disturb	Sample	Color	Description
1	[Hatched pattern]	1	late Pleistocene	[Symbol]			5Y 4/1 To 5Y 3/1	SILTY CLAY AND CARBONATE-BEARING SILTY CLAY  Major Lithology: This core consists of dark gray to very dark gray silty clay that contains laminae and thin beds of silt. The interval between the top of Section 2 and 80 cm in Section 4 contains foraminifers.
2	[Hatched pattern]	2		[Symbol]				
3	[Hatched pattern]	3		[Symbol]		S		
4	[Hatched pattern]	4		[Symbol]		S		
5	[Hatched pattern]	5	middle Pleistocene	[Symbol]			5Y 3/2	
6	[Hatched pattern]	6		[Symbol]				
7	[Hatched pattern]	7		[Symbol]				
8	[Hatched pattern]	8		[Symbol]				
9	[Hatched pattern]	CC						
						M		



SITE 946 HOLE A CORE 18X CORED 159.2 - 168.8 mbsf

Meter	Graphic Lith.	Section	Age	Structure	Disturb	Sample	Color	Description
1		1	middle Pleistocene				5Y 3/1	SILTY CLAY Major Lithology: This core consists of very dark gray to black (N2/0) silty clay with laminae and thin graded beds of silt.
	CC					M		

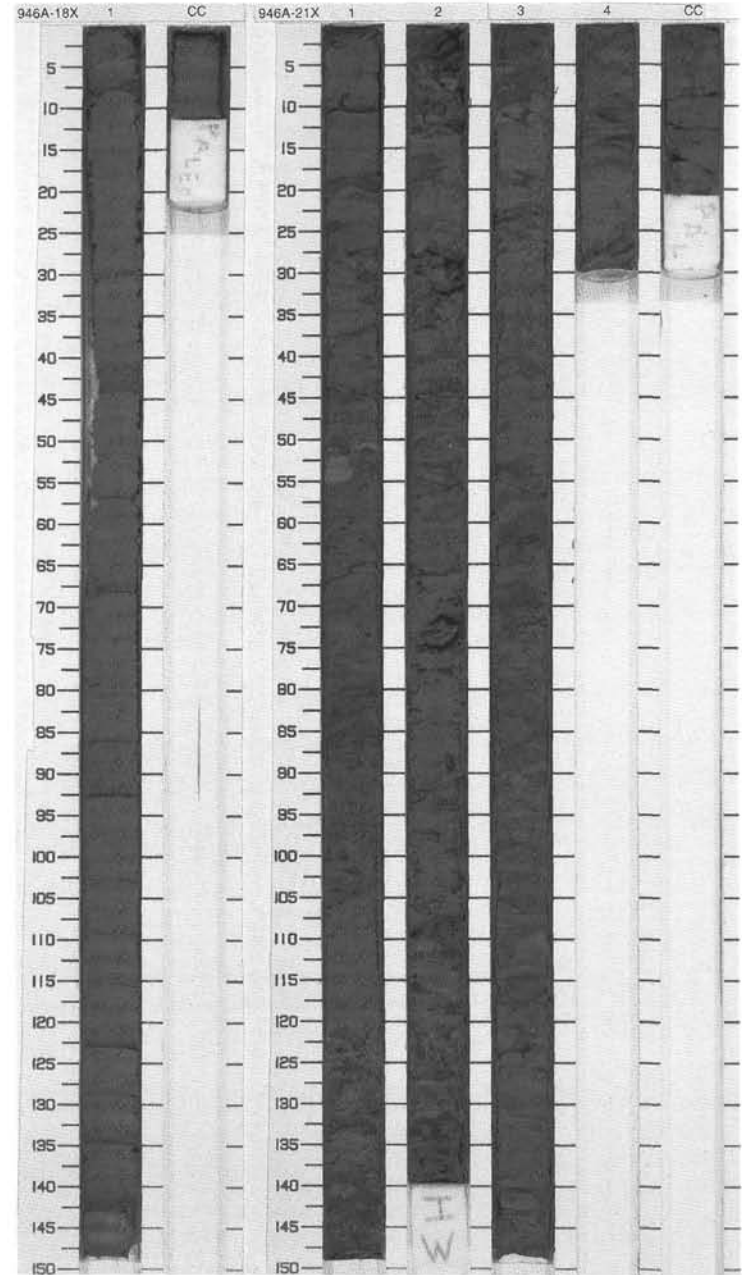
946A 19X NO RECOVERY

946A 20X NO RECOVERY

SITE 946 HOLE A CORE 21X CORED 188.2 - 197.8 mbsf

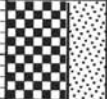
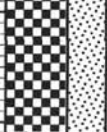
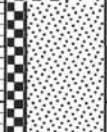
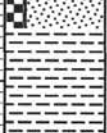

Meter	Graphic Lith.	Section	Age	Structure	Disturb	Sample	Color	Description
1		1	middle Pleistocene				5Y 3/2 To 2.5Y 4/2	SAND AND MUD CLASTS Major Lithology: This core consists of a chaotic assemblage of mud clasts intercalated within a matrix comprised of very dark gray silty clay and dark grayish brown, poorly sorted medium- to coarse-grained sand.
2		2						
3		3						
4		4						
5	CC							
						M		

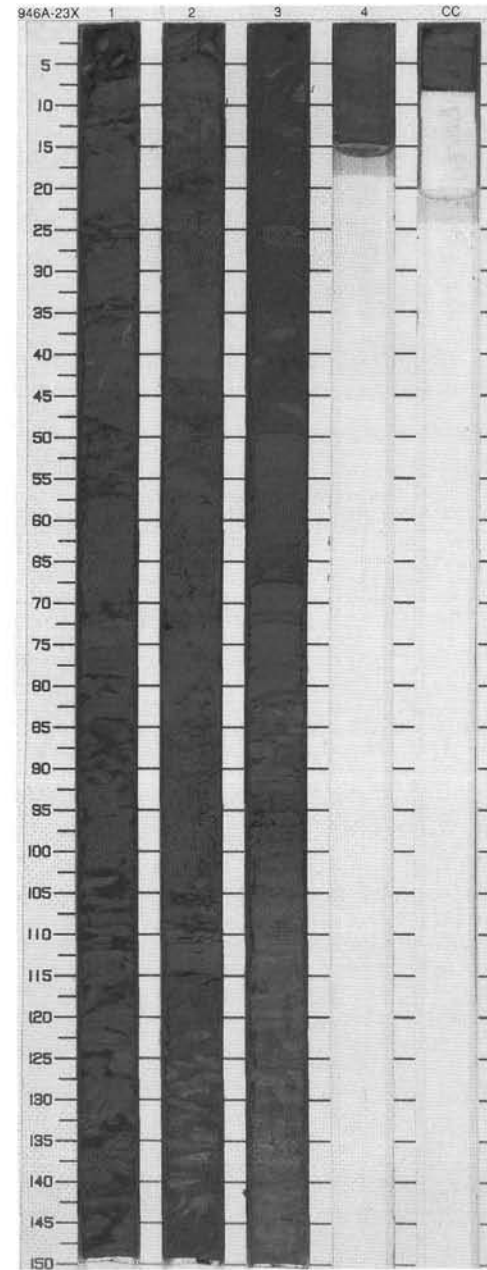
946A 22X NO RECOVERY



SITE 946 HOLE A CORE 23X

CORED 207.5 - 217.1 mbsf

Meter	Graphic Lith.	Section	Age	Structure	Disturb	Sample	Color	Description
1		1	middle Pleistocene	◆			5Y 3/2	SAND, MUD CLASTS, SILTY CLAY AND CALCAREOUS CLAY  Major Lithology: From the top of this core to 70 cm in Section 2, this core consists of a matrix-supported mud conglomerate. The matrix is composed of fine to medium sand; the clasts are color banded, folded, and contorted. Below 70 cm in Section 2, the sand component increases. A carbonate-rich clast occurs at 95 cm in Section 2. From 50 cm in Section 3 to the top of Section 4, dark gray silty clay is intercalated with the sand. Rare silt laminae and blebs of sand are common. Section 4 and the CC are composed of grayish olive green carbonate-rich clay.
2		2		◆				
3		3		◆	—		5GY 4/1	
4		4		◆	—			
		CC				M		



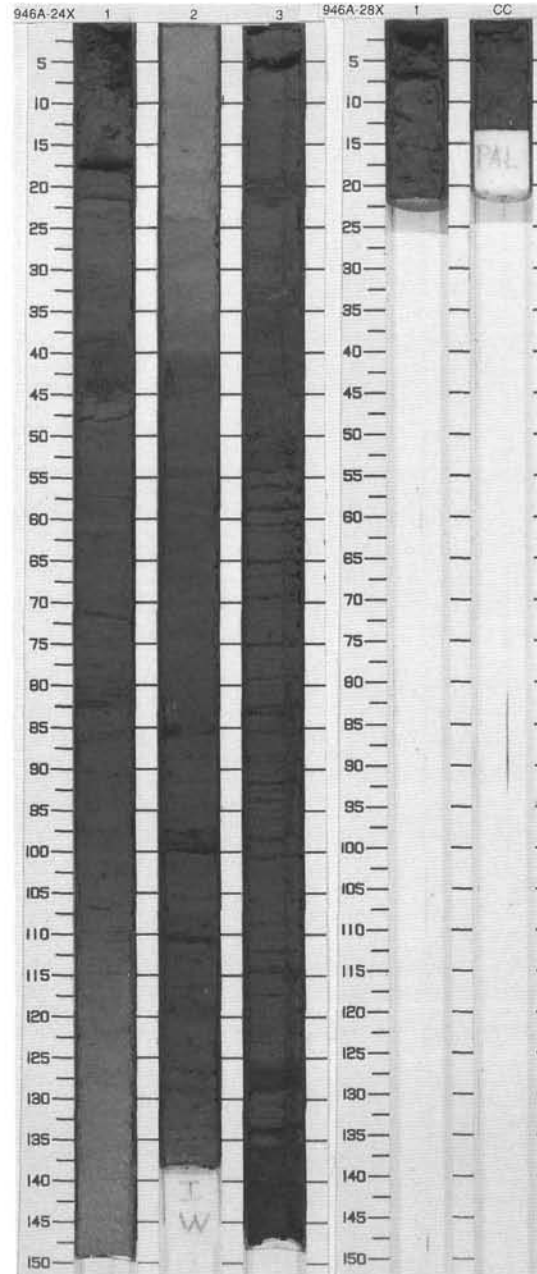
SITE 946 HOLE A CORE 24X CORED 217.1 - 226.7 mbsf

Meter	Graphic Lith.	Section	Age	Structure	Disturb	Sample	Color	Description
1	[Dotted pattern]	1	middle Pleistocene	}			5GY 4/1 To 5Y 5/1	<p>SILTY CLAY, CALCAREOUS SILTY CLAY, AND CALCAREOUS CLAY</p> <p>Major Lithology: The interval between the top of this core and the bottom of Section 2 consists of very dark greenish gray carbonate-rich/bearing silty clay and carbonate-rich clay (in the interval 82-150 cm Section 1). From the top of Section 3 to the bottom of the core, very dark gray silty clay with silt laminae and thin to medium beds of silt is the dominant lithology.</p>
2	[Horizontal dashed pattern]	2					5GY 4/1 To 5GY 3/1	
3	[Horizontal dashed pattern]	3					5Y 3/1	
4	[Horizontal dashed pattern]	CC						

946A 25X THROUGH 27X NO RECOVERY

SITE 946 HOLE A CORE 28X CORED 255.7 - 265.4 mbsf

Meter	Graphic Lith.	Section	Age	Structure	Disturb	Sample	Color	Description
	[Dotted pattern]	1	middle Pleist.		W	M	2.5Y 4/2	<p>SILTY CLAY AND SAND</p> <p>Major Lithology: Section 1 of this core consists of silty clay; the core catcher contains dark grayish brown very fine sand. The core has been highly disturbed by drilling.</p>
	[Dotted pattern]	CC						





SITE 946 HOLE A CORE 29X

CORED 265.4 - 275.0 mbsf

Meter	Graphic Lith.	Section	Age	Structure	Disturb	Sample	Color	Description
1	[Hatched pattern]	1	middle Pleistocene	[Three horizontal lines]			5Y 3/1	<p>SILTY CLAY AND SILT</p> <p>Major Lithology: This core consists of very dark gray silty clay with silt laminae and thin beds of silt. The silt beds occur from 70 cm in Section 5 to the bottom of the core.</p>
2	[Hatched pattern]	2		[Three horizontal lines]				
3	[Hatched pattern]	3		[Three horizontal lines with a small circle]				
4	[Hatched pattern]	4		[Three horizontal lines]				
5	[Hatched pattern]	5		[Three horizontal lines]				
6	[Hatched pattern]	6		[Three horizontal lines]				
7	[Hatched pattern]	CC		[Three horizontal lines]				
8	[Hatched pattern]	CC		[Three horizontal lines]				

