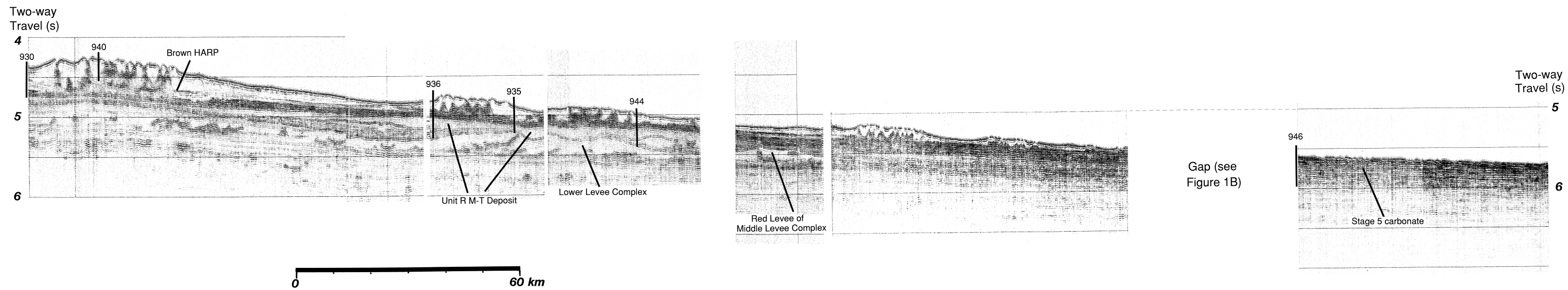


Figure 14. Longitudinal composite of seismic reflection profiles from the middle to the lower fan along the Amazon Channel showing distribution of acoustic units. See Figure 1B for location of profiles. The left end of the left-hand profile is just downfan of Site 930. Here, the transparent levee ~0.3–0.4 s below the fan surface is the Red Channel-levee System of the Middle Levee Complex. The amalgamated HARP of the Upper Levee Complex lies between the Red levee and the transparent upper levees at the fan surface. The individual HARPs in this composite unit, each associated with a different channel-levee system, merge downfan; individual channel-levee systems cannot be mapped confidently toward the lower portion of the fan (right seismic profile). Site 946 is located at the left end of the right-hand seismic profile. Here, the Stage 5 highstand carbonate is represented by a continuous reflection ~0.15 s below the surface of the fan (Fig. 13A).



[Table of Contents](#)