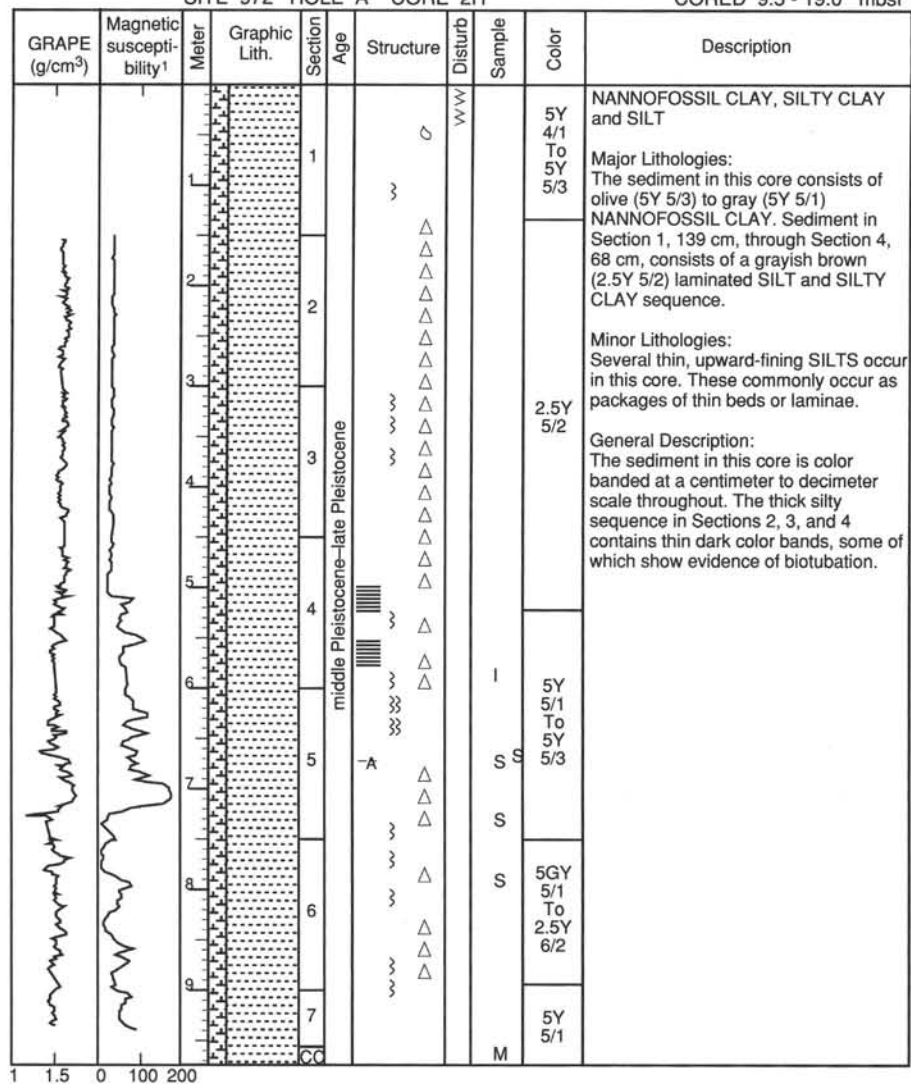
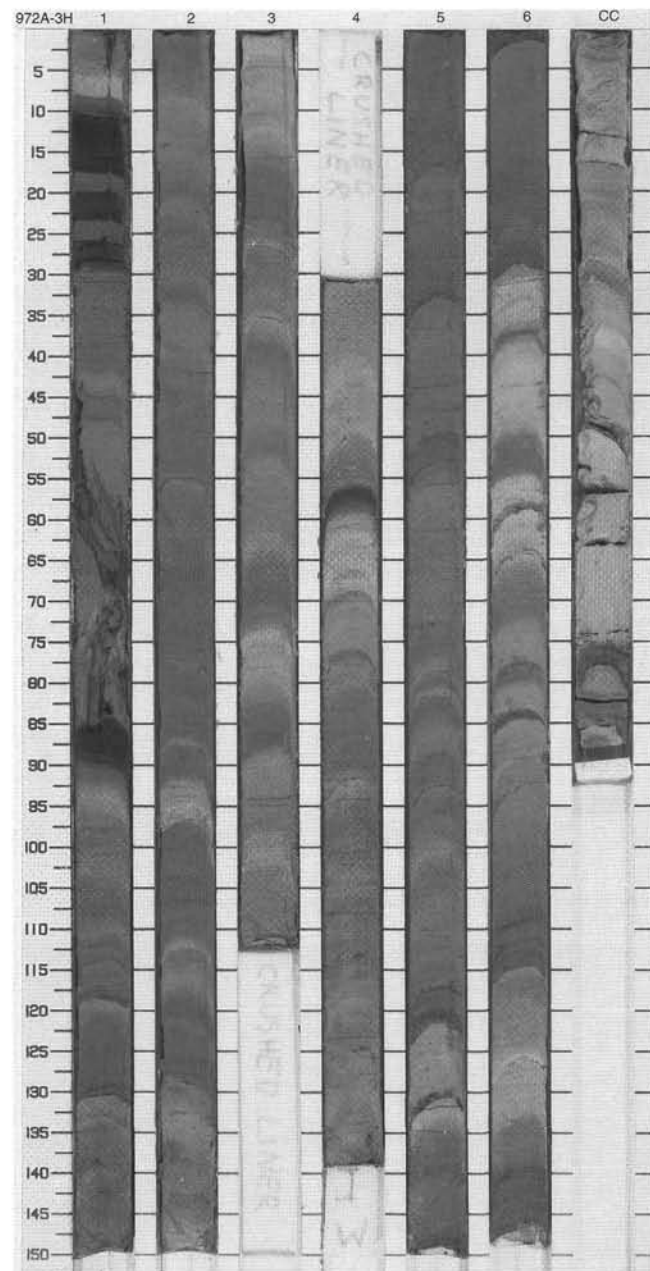
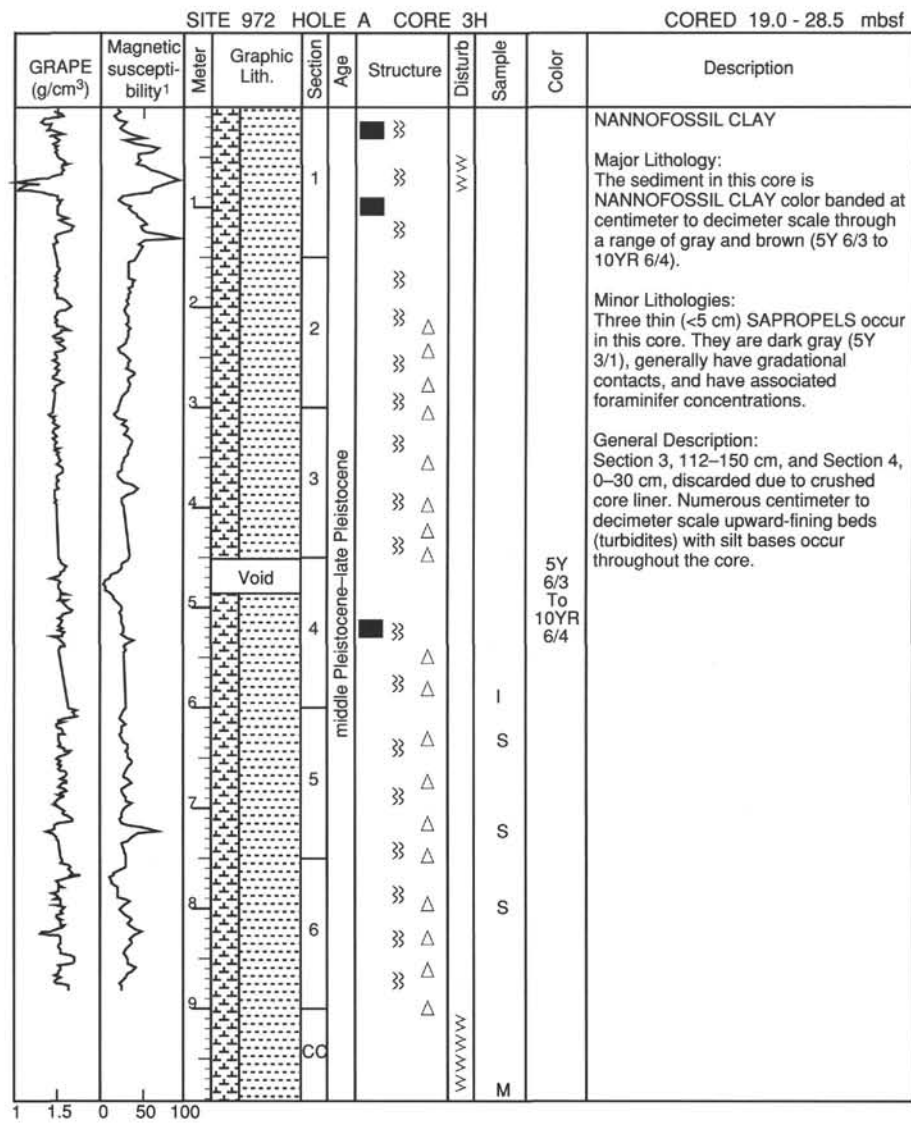
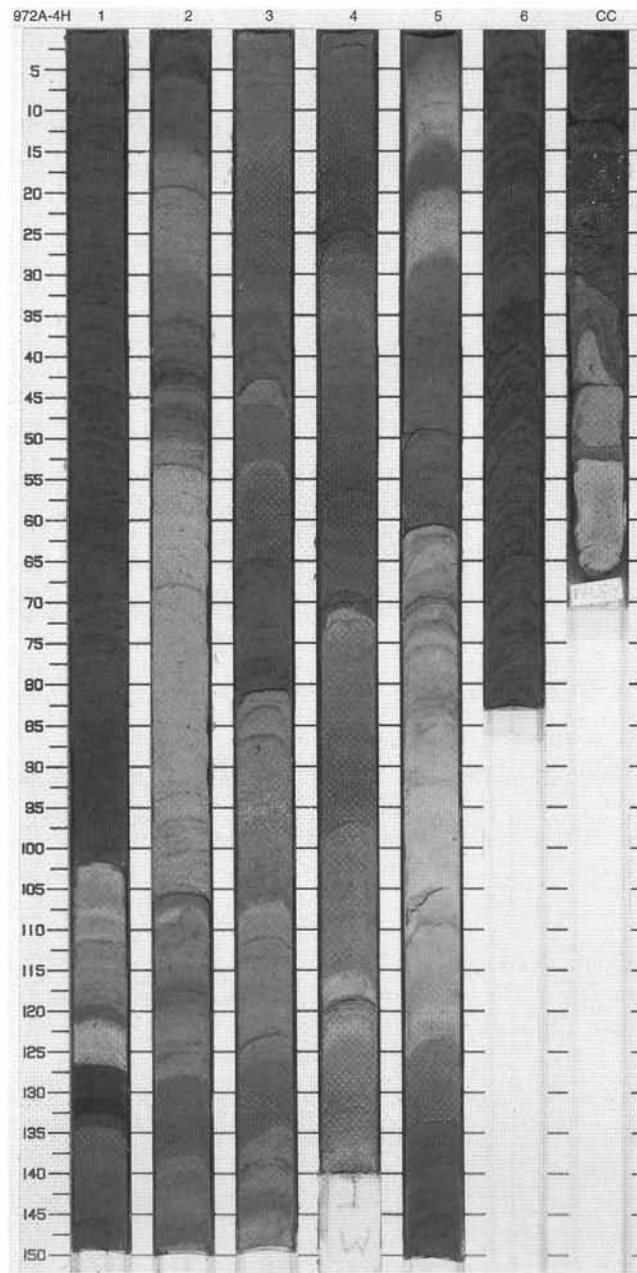
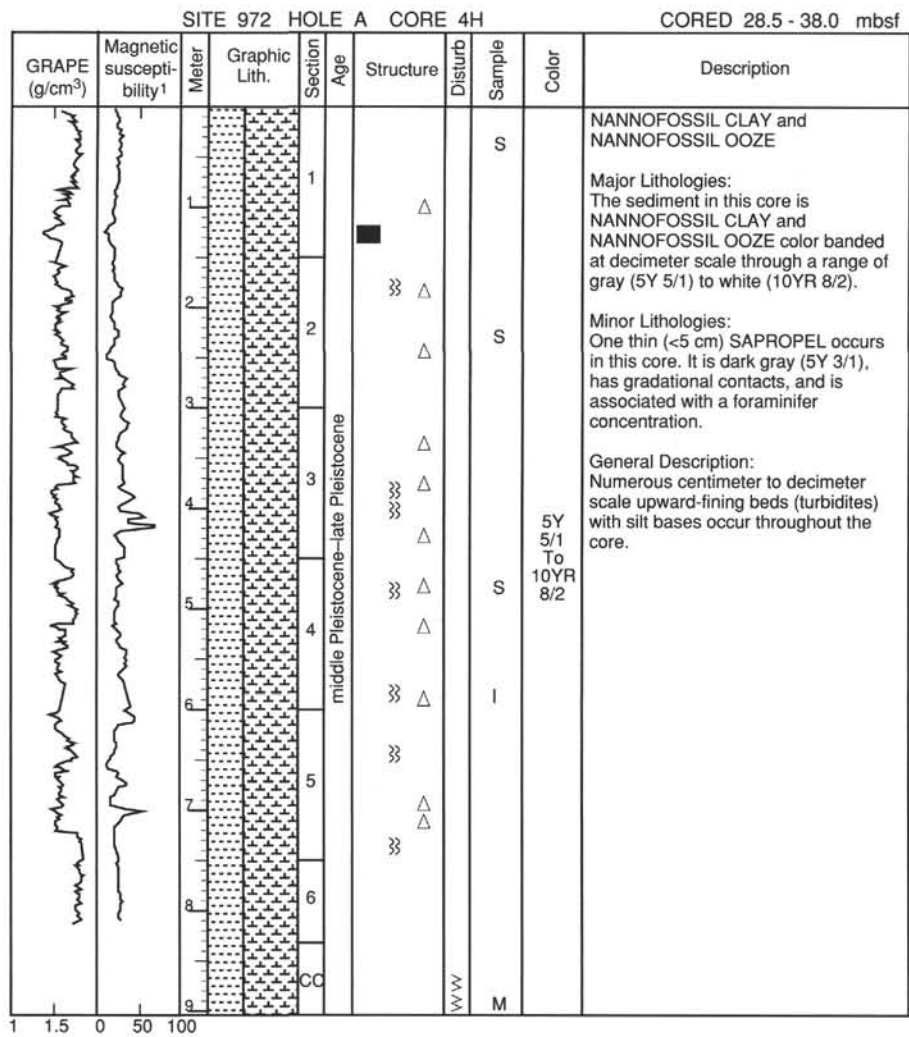


## SITE 972 HOLE A CORE 2H

CORED 9.5 - 19.0 mbsf

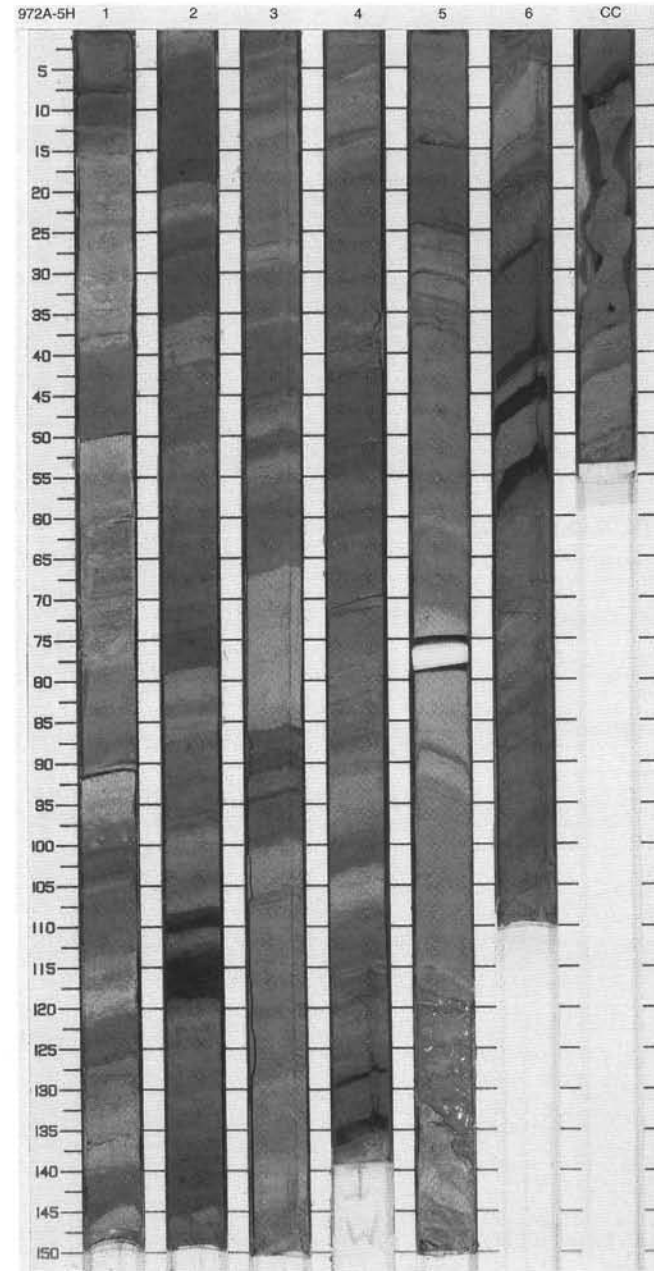
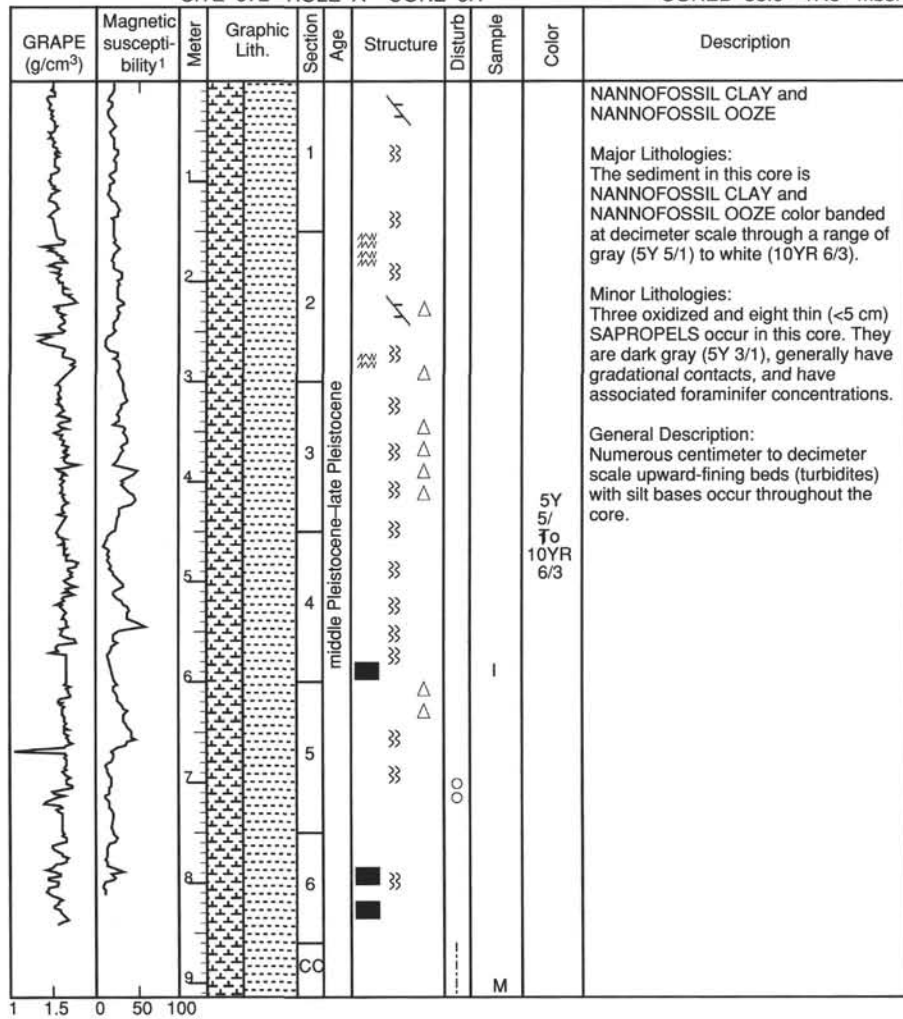






SITE 972 HOLE A CORE 5H

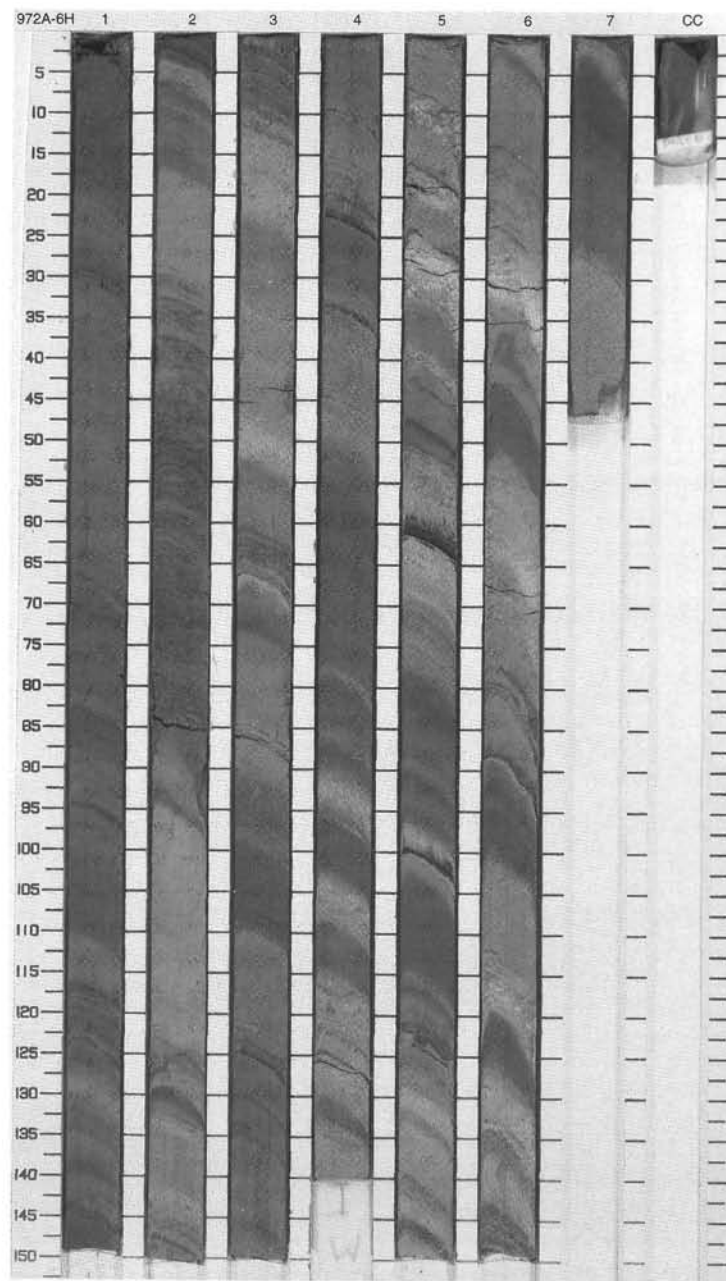
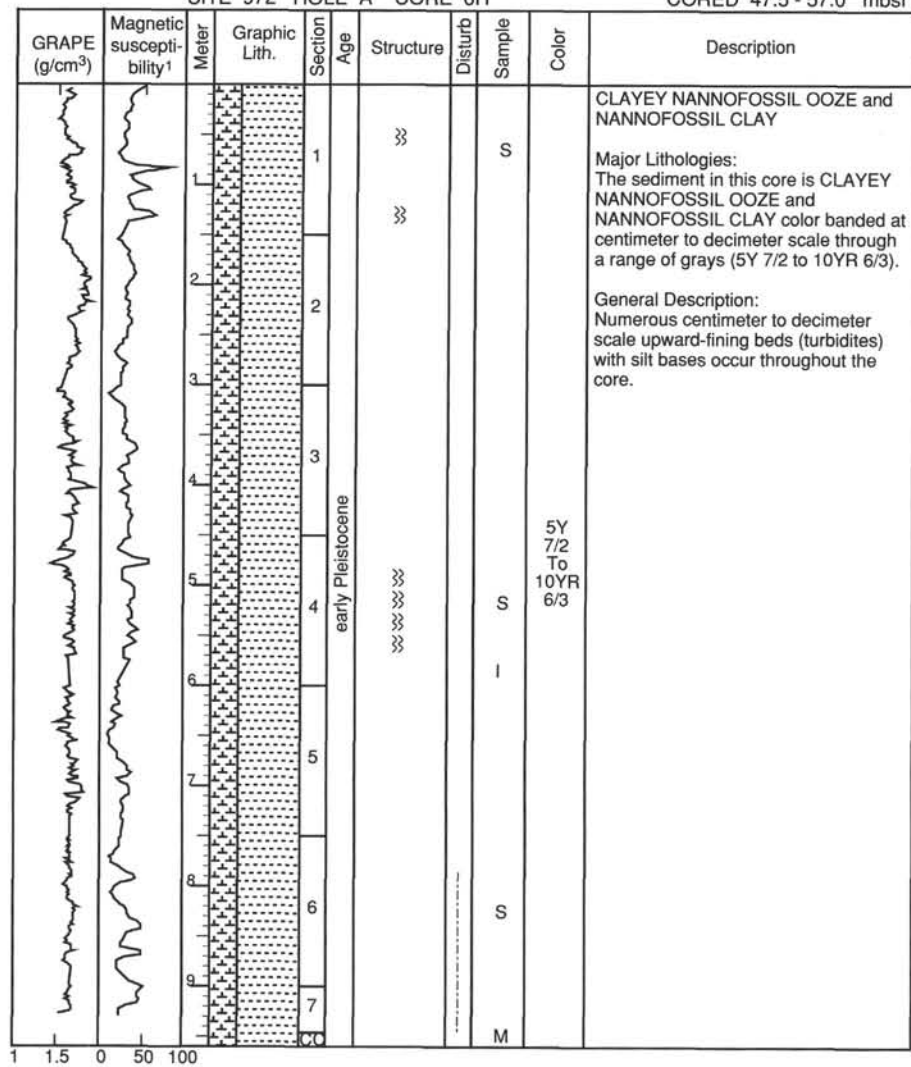
CORED 38.0 - 47.5 mbsf

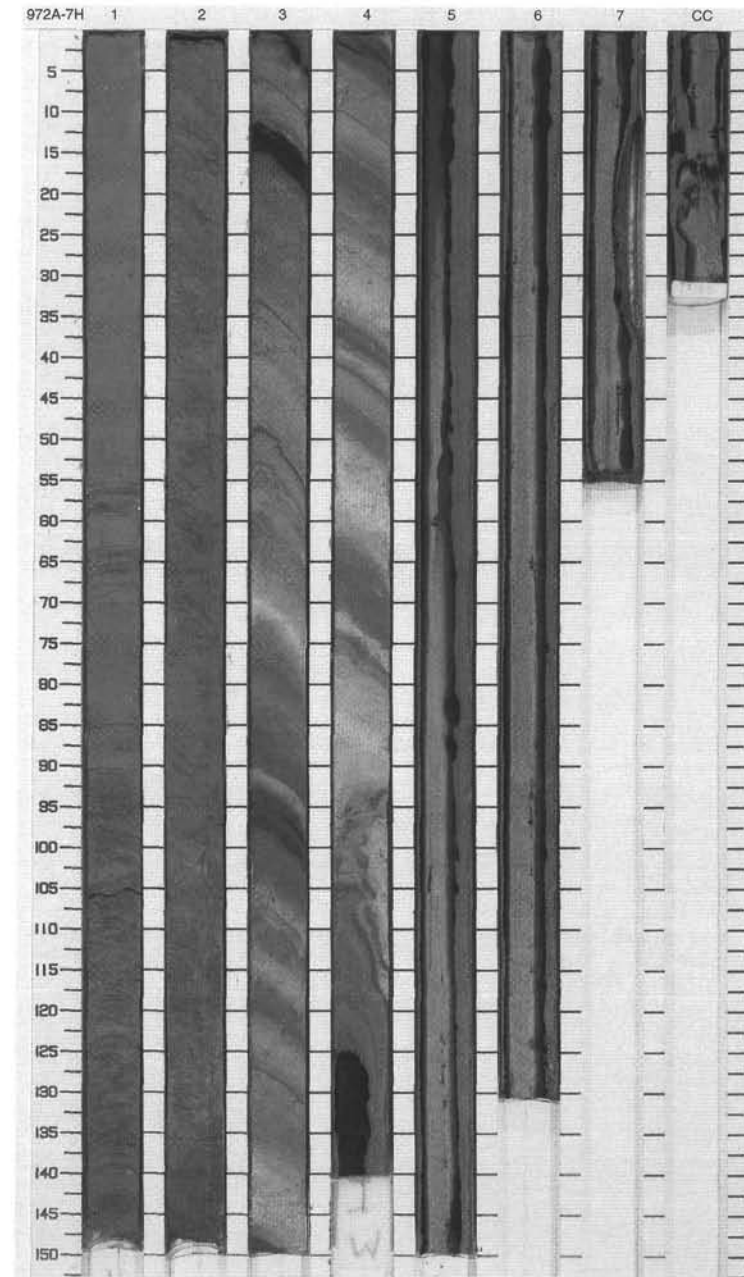
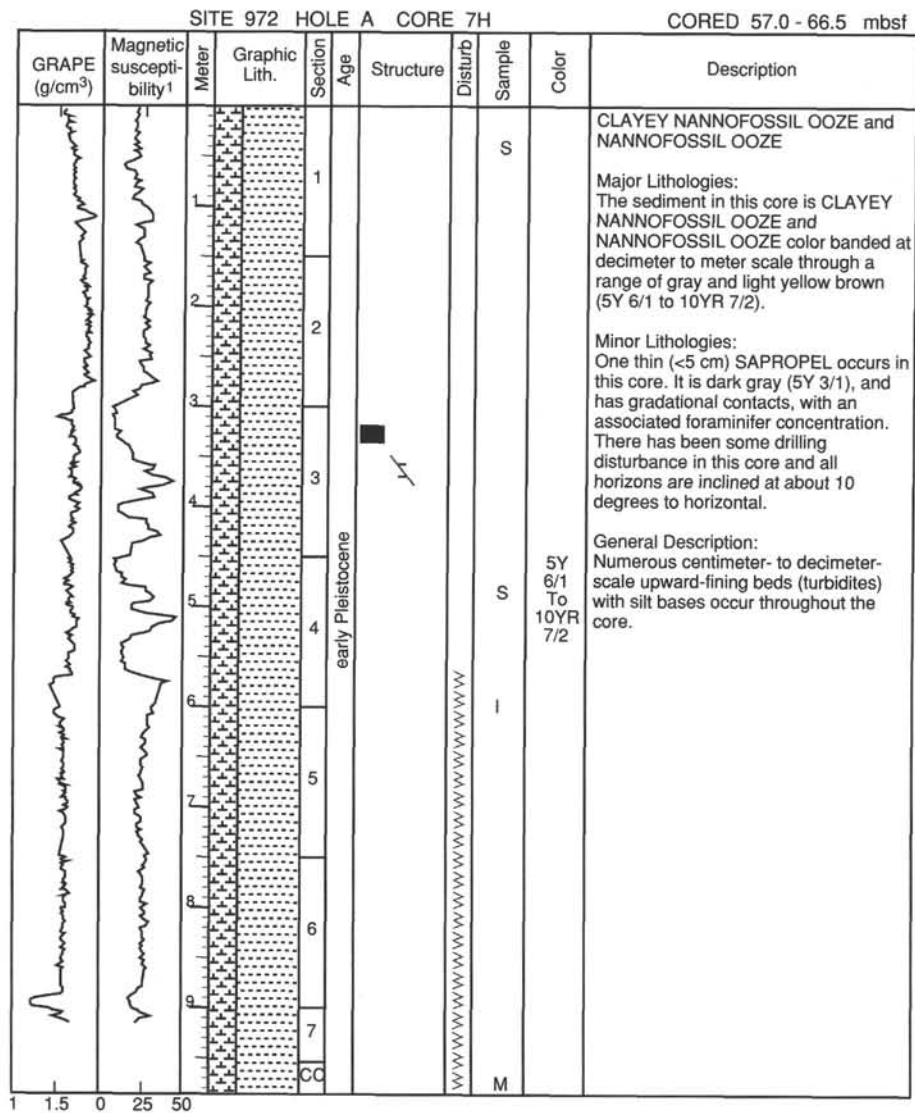




## SITE 972 HOLE A CORE 6H

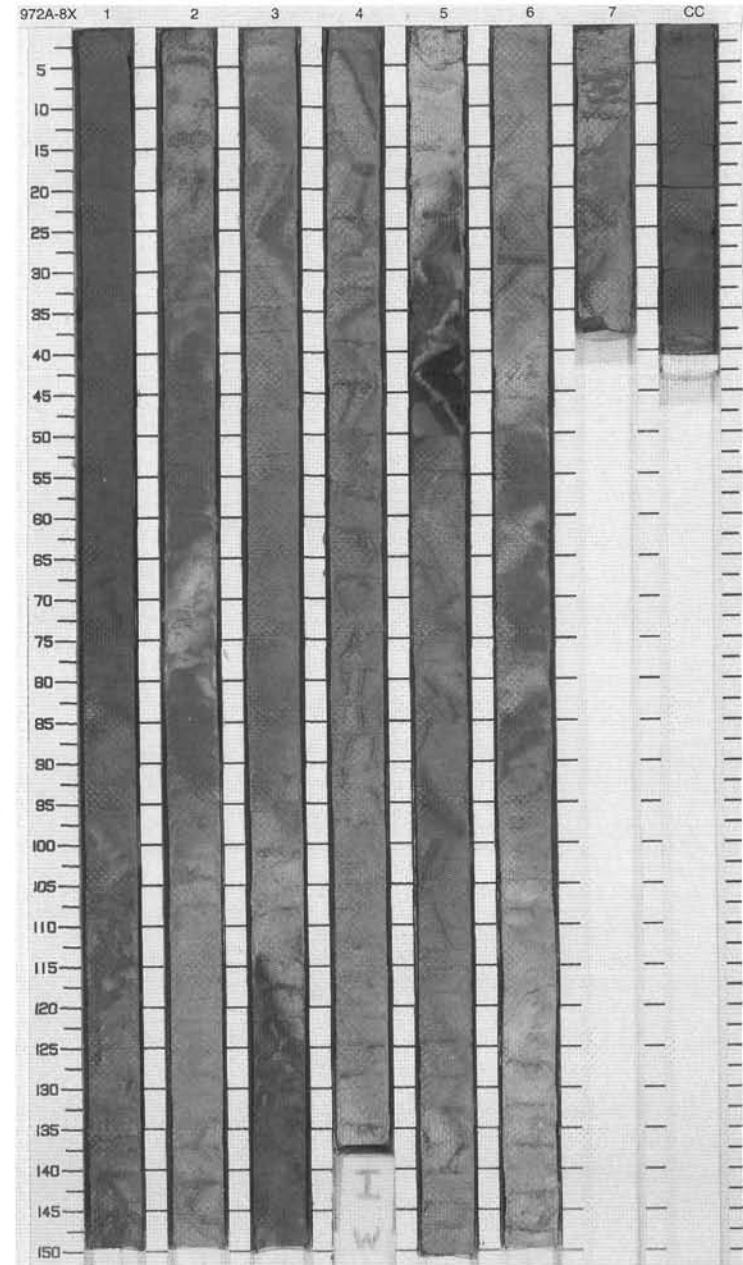
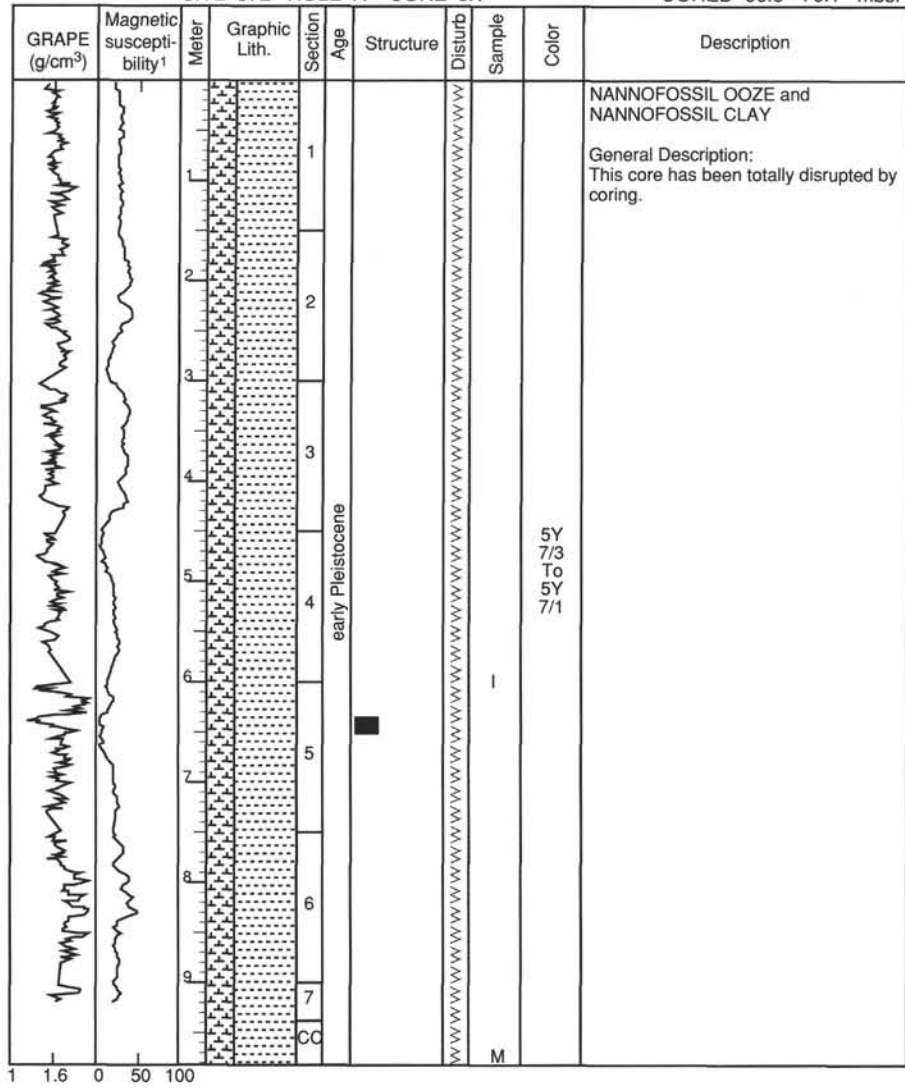
CORED 47.5 - 57.0 mbsf





## SITE 972 HOLE A CORE 8X

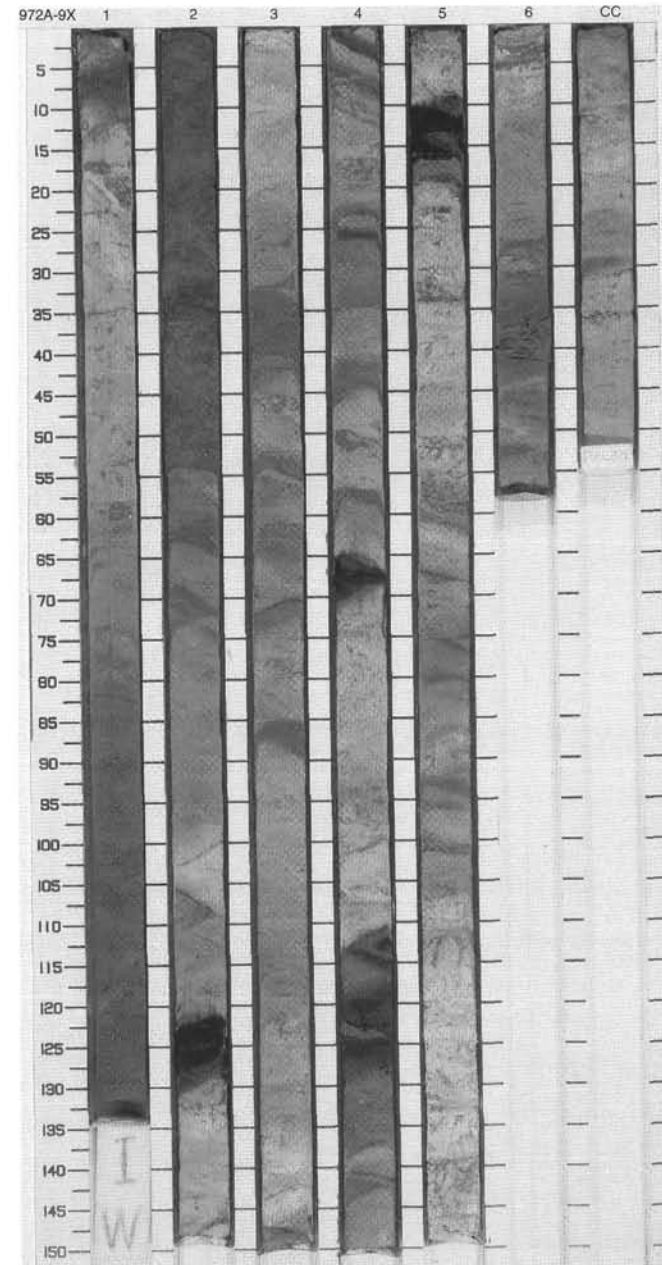
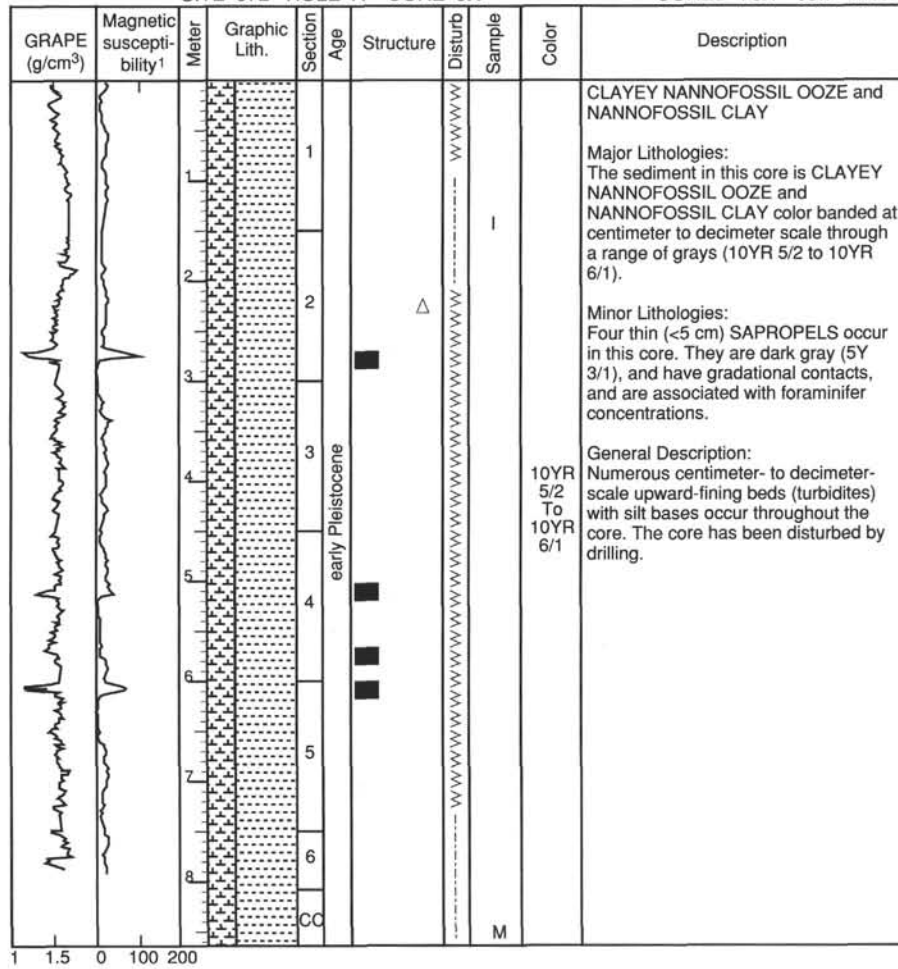
CORED 66.5 - 76.1 mbsf





SITE 972 HOLE A CORE 9X

CORED 76.1 - 85.7 mbsf



## SITE 972 HOLE A CORE 10X

CORED 85.7 - 95.4 mbsf

