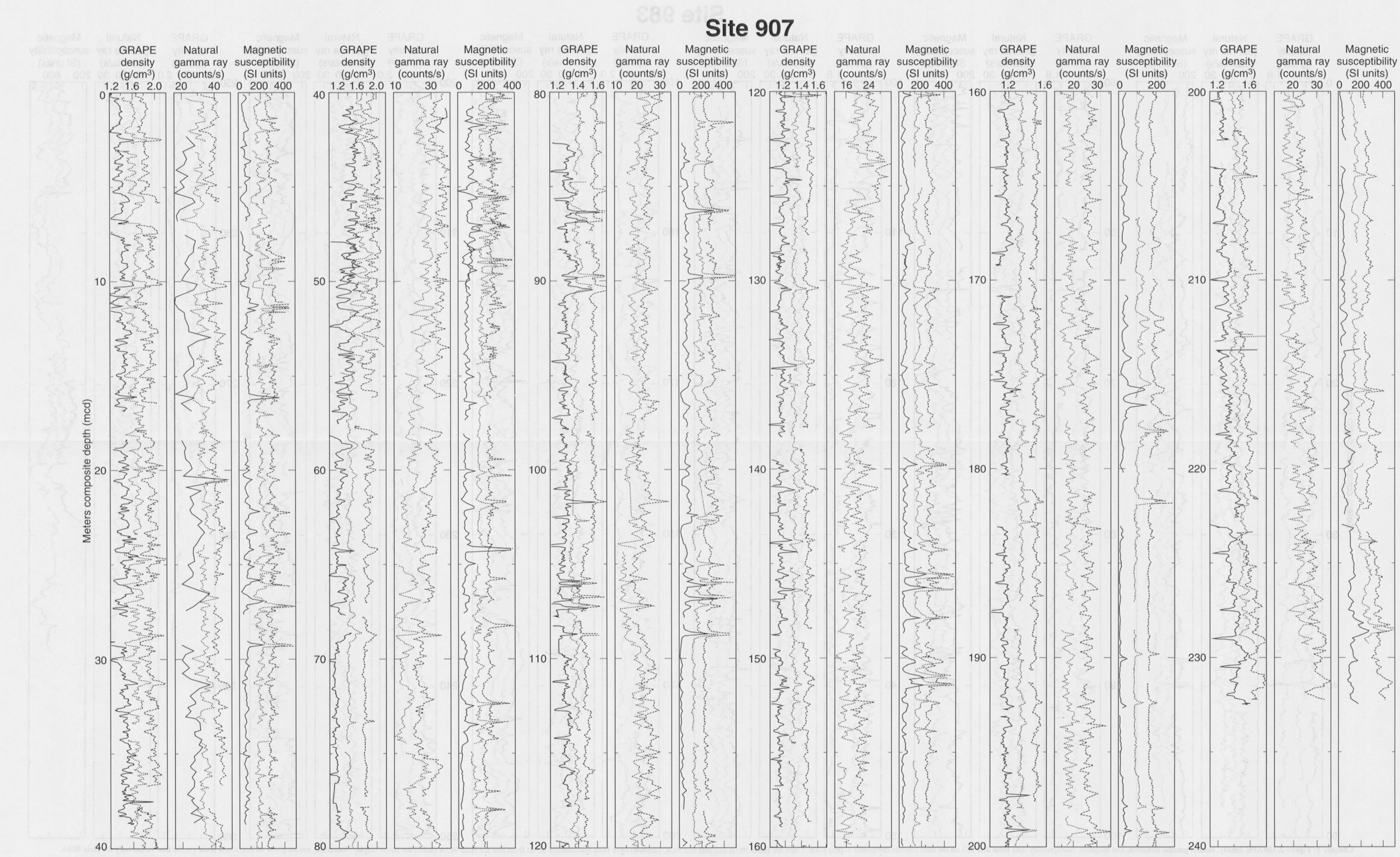


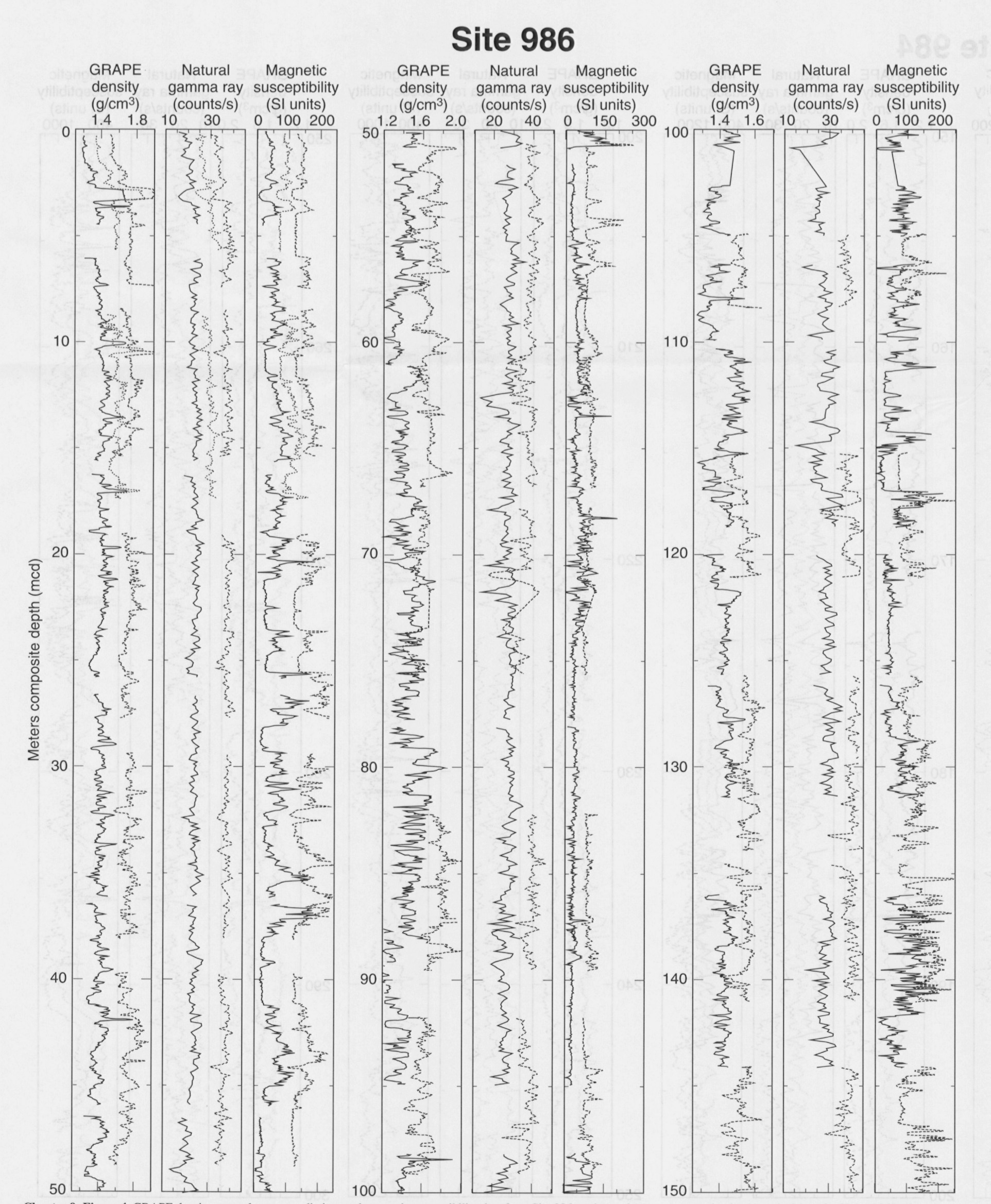
Chapter 4: Figure 2. GRAPE density, spectral reflectance (650–700 nm), and magnetic susceptibility data from Site 982 on the mcd (meters composite depth) scale. Lines for Holes 982B (dotted), 982C (dashed), and 982D (long dashed, 24–32 mcd) have been horizontally offset from line for Hole 982A (solid) for better display; therefore, values given on horizontal scale are the true values only for Hole 982A.



Chapter 8: Figure 3. GRAPE density, natural gamma radiation, and magnetic susceptibility data from Site 985 on the mcd (meters composite depth) scale. Line for Hole 985B (dotted) has been horizontally offset from line for Hole 985A (solid) for better display; therefore, values given on horizontal scale are the true values only for Hole 985A.



Chapter 7: Figure 2. GRAPE density, natural gamma radiation, and magnetic susceptibility data from Site 907 on the mcd (meters composite depth) scale. Lines for Holes 907B (dotted) and 907C (dashed) have been horizontally offset from line for Hole 907A (solid) for better display; therefore, values given on horizontal scale are the true values only for Hole 907A.



Chapter 9: Figure 4. GRAPE density, natural gamma radiation, and magnetic susceptibility data from Site 986 on the mcd (meters composite depth) scale. Lines for Holes 986B (dotted) and 986C (dashed) have been horizontally offset from line for Hole 986A (solid) for better display; therefore, values given on horizontal scale are the true values only for Hole 986A.



Chapter 10: Figure 2. GRAPE density and magnetic susceptibility data from Site 987 on the mcd (meters composite depth) scale. Lines for Holes 987B (dotted), 987C (dashed), and 987D (long dashed) have been horizontally offset from line for Hole 987A (solid) for better display; therefore, values given on horizontal scale are the true values only for Hole 987A.