

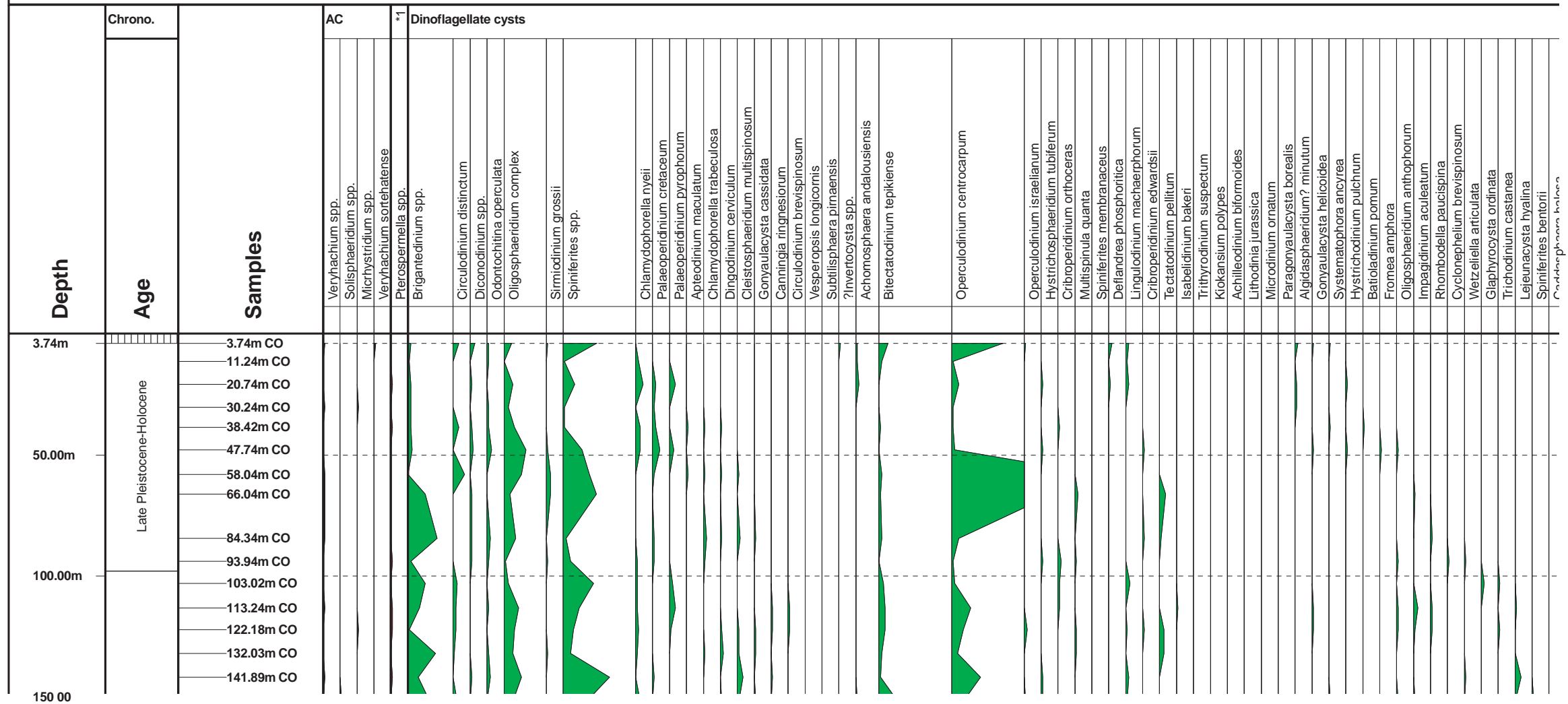


ODP Proceedings, Scientific Results, Volume 162, Chapter 6.  
 Appendix A. Distribution chart of dinoflagellate cysts in Hole 986C.

**Well Name : ODP Leg 162 Hole 986C**

Interval : 3.74m - 402.04m  
 Scale : 1:2000  
 Date :  
 Palynology Distribution Chart

IKU Petroleum Research  
 Style : Numeric Abundance Saw Tooth  
 Author : Morten Smelror

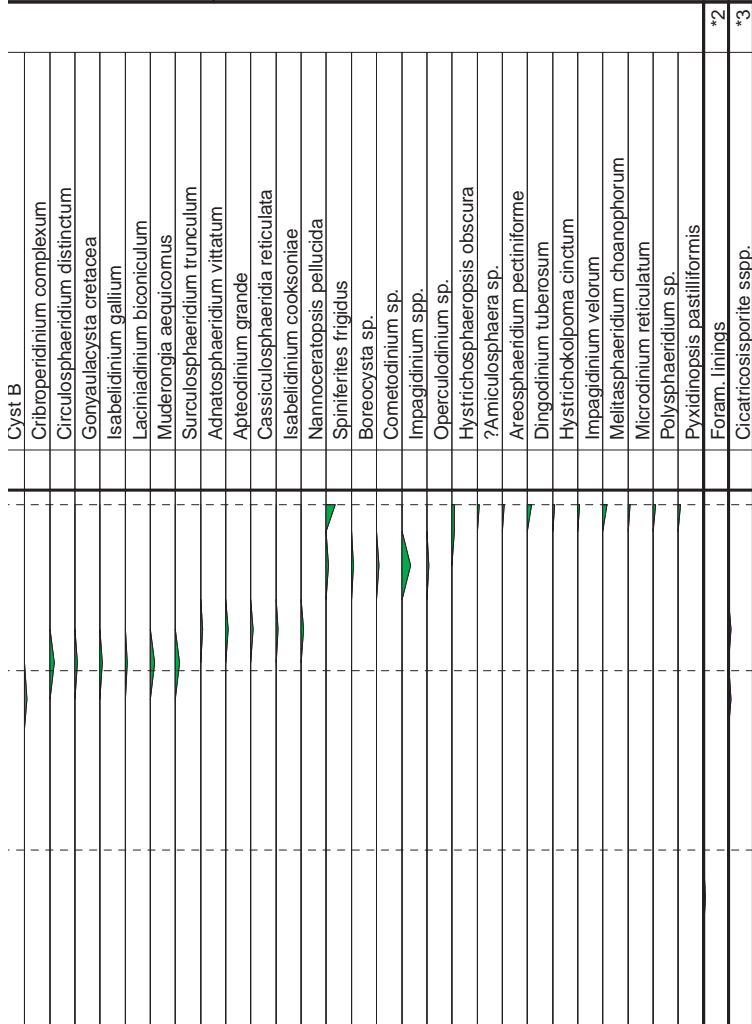




Epilidosphaeridia spinosa	
?Leptodinium sp.III	
Surculosphaeridium tribuliferum	
Florentinia mantellii	
Lithodinia stoveri	
Achomosphaera? neptuni	
Pseudoceratium nudum	
Cribrerodinium edwardsii	
Elytrocysta druggii	
Halodinium minor	
Cordosphaeridium minimum	
?Sumatradinium sp.	
Bitectatodinium sp.I	
Cauca parva	
Cyclonephelium membraniphorum	
Eatonicysta ursulae	
Gonyaulacysta fastigiata	
Ovoidinium sp.I	
Spiniferites belerius	
Turbiosphaera galatea	
Cribrerodinium tenuitubulatum	
Polysphaeridium zoharyi	
Homotryblium floripes	
?Sumatradinium sp.I	
?Microdinium sp.	
Batioladinium varigranosum	
Litosphaeridium arundum	
cf. Cyclopsiella sp.	
Problematicum IV	
Dapsilidinium simplex	
Florentinia terox	
?Cordosphaeridium sp.	
Achomosphaera neptuni	
Chatangiella madura	
Chytroisphaeridia hyalina	
Hystriochklopoma rigaudae	
Palaeohystrichophora infusorioides	
Pseudoceratium eisenackii	
Sentusidinium pelionense	
Muderongiatetra cantha	
Cleistosphaeridium insolitum	
Pentadinium laticinctum	
Chatangiella tripartita	
Membranosphaera sp.B. De Coninck ,1975	
Palaeocystodinium golzowense	
Cribrerodinium spp.	
Chlamydothorellaecto tabulata	
Homotryblium oceanicum	
Homotryblium tenuispinosum	
Protoellipsoidinium clavulum	
Ambonosphaera jurassica	
Ctenidodinium sellwoodii	
Cyst A	
Gonyaulacysta longicornis	
Impagidinium sp.B. EM, 1997	
Leptodinium subtile	
Tubotuberella apatela	
Wanaea sp.	
Impletosphaeridium spp.	
Reticulatosphaera actinocoronata	
Impletosphaeridium whitei	
Chytroisphaeridia chytrooides	
Atopodinium haromense	
Cribrerodinium fetichamense	
Cyclopsiella granosa	
Heslertonia teichophera	
Lithodinia callomonii	
Litosphaeridium siphonophorum	
Protoperidinium indet.	
Spiniferites pseudofurcatus	
Cleistosphaeridium spp.	
Cerbiata bulata	
Heslertonia pellucida	
Surculosphaeridium longifurcatum	
Areosphaeridium arcuatum	
Cordosphaeridium gracile	
Dinocyst IV	
Meiourongyalax callomonii	
Membranophoridium aspinatum	
Perisseisphaeridium pannosum	
Stephodinium coronatum	
Wetziella ovalis	
Xiphophoridium alatum	
Circulodinium longispinosum	
Alterbia sp.	
Chatangiella bakeri	
Batiacasphaera micropapillata	
Chlamydothorella discreta	
Apteodinium sp.I	
?Tectatodinium sp.	
Canningia sp.	
Cyst (Voring?)	
Escharisphaeridia sp.	
Incertae sedis 1 Edwards, 1984	
Isabelidinium sp.	
Muderongia simplex	
Stiphrosphaeridium anthophorum	
Waliodinium cylindricum	
?Diconodinium sp.	
Chatangiella sp.	
Coronifera oceanica	
Impagidinium cf. pallidum	
Selenopemphix nephroides	
Selenopemphix subinermis	

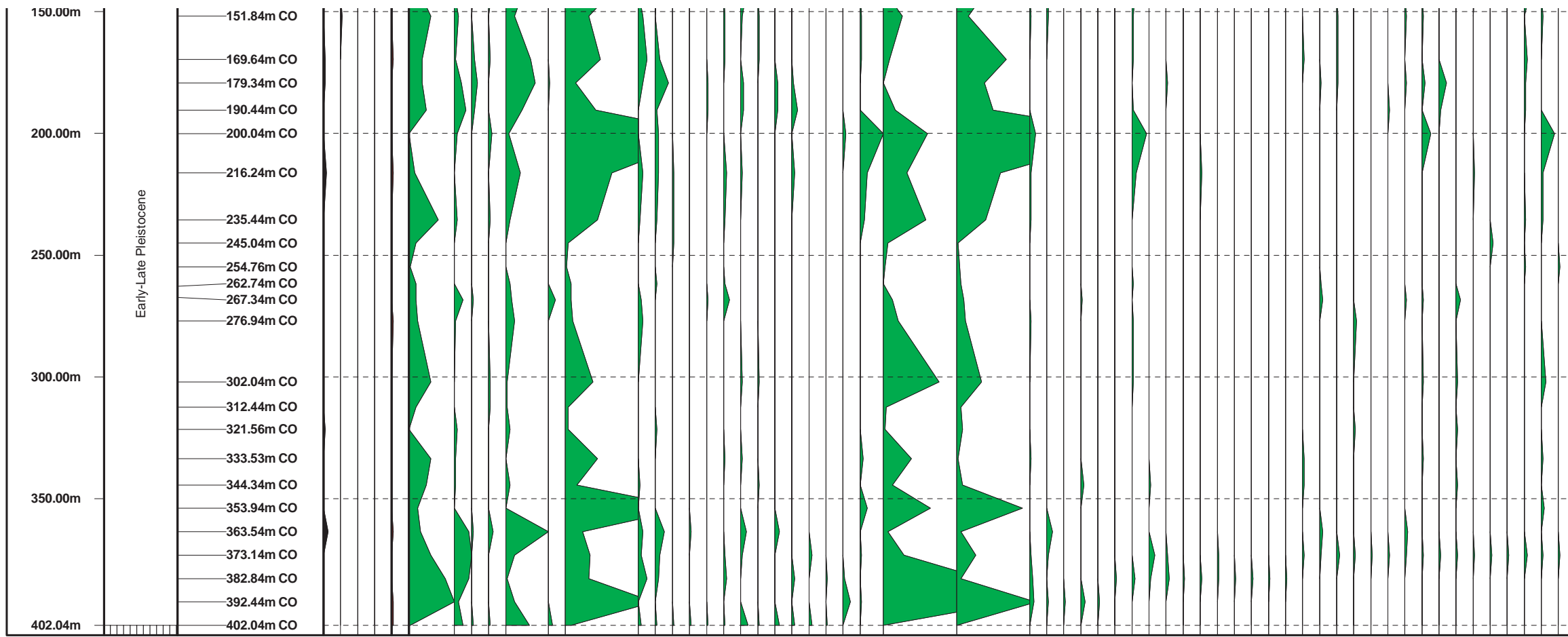
# IKU Petroleum Research

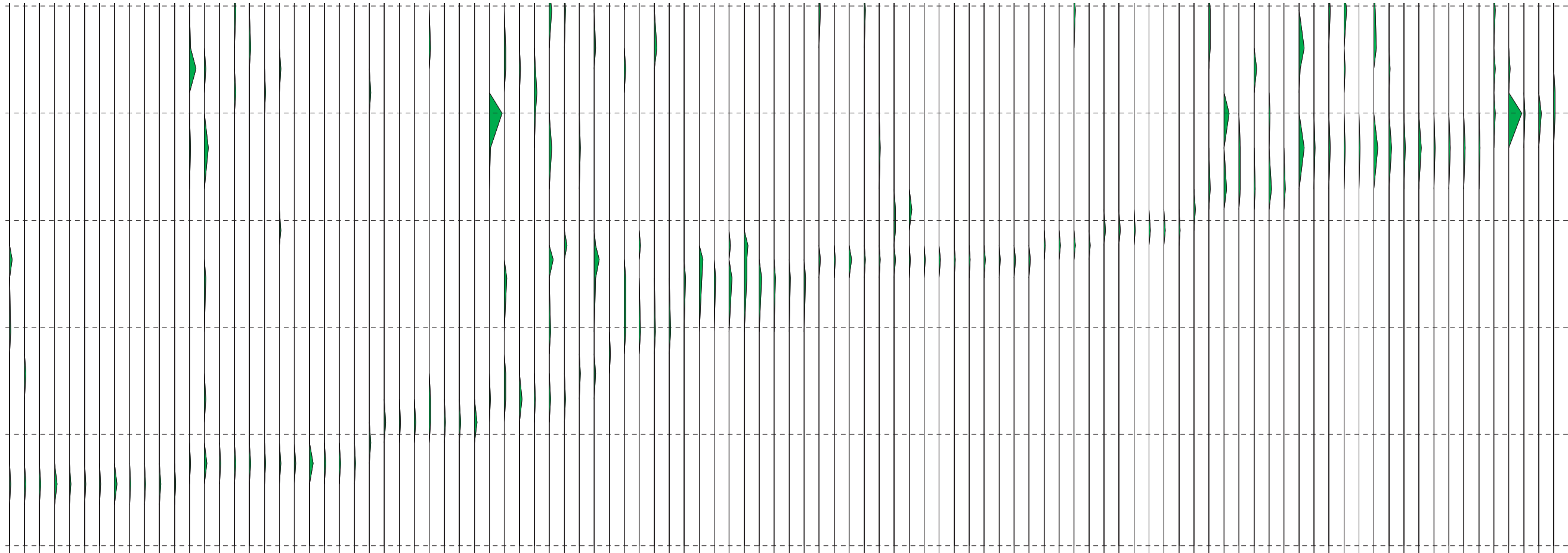
## Trondheim, Norway

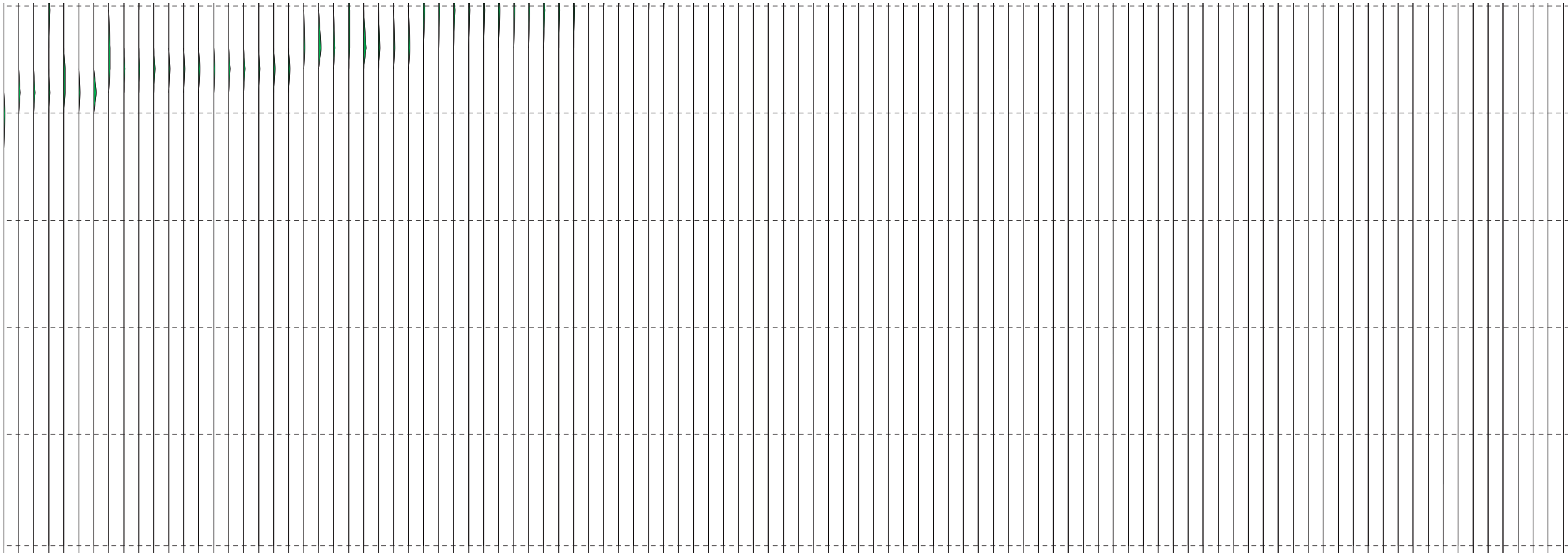


### Chart Key

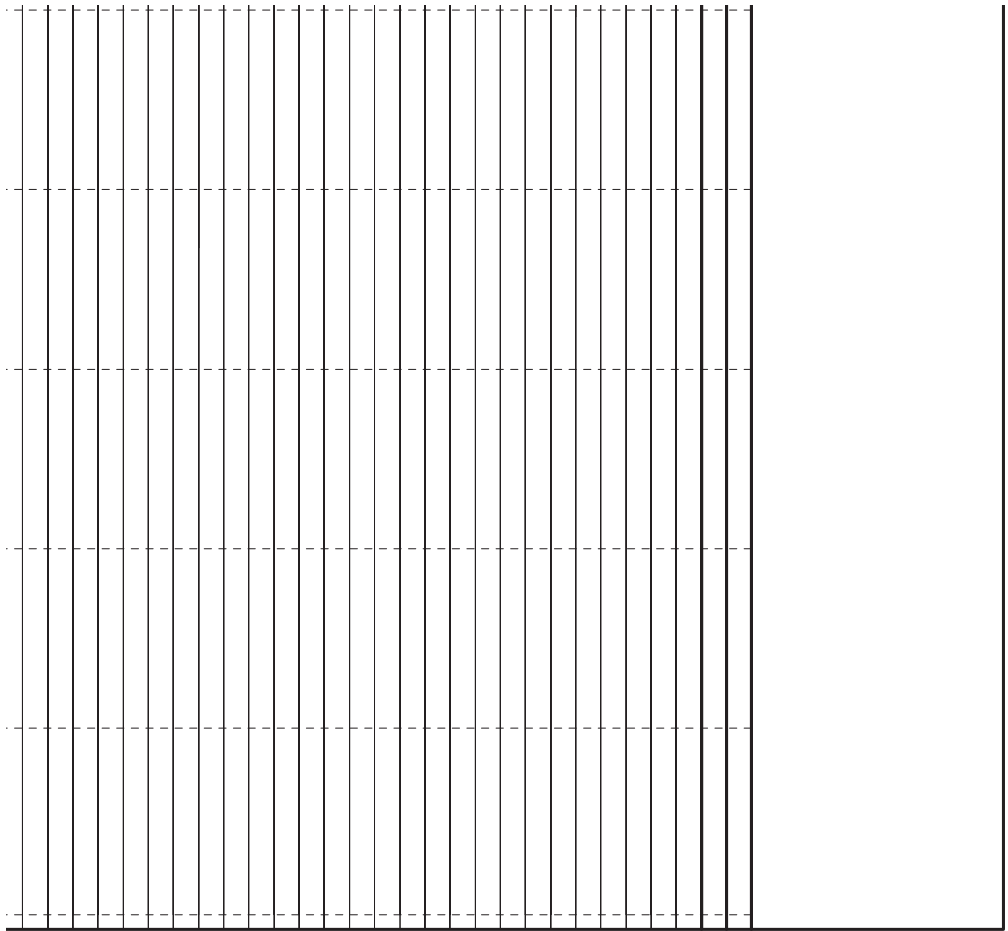
- Category Key**
- Acritarchs
  - Algae
  - Dinoflagellate cysts
  - Foraminifera
  - Spores and pollen
- Distribution Scale**  
15mm = 50 counts
- Chrono. Chronostratigraphy**
- AC Acritarchs
  - \*1 Algae
  - \*2 Foraminifera
  - \*3 Spores and pollen











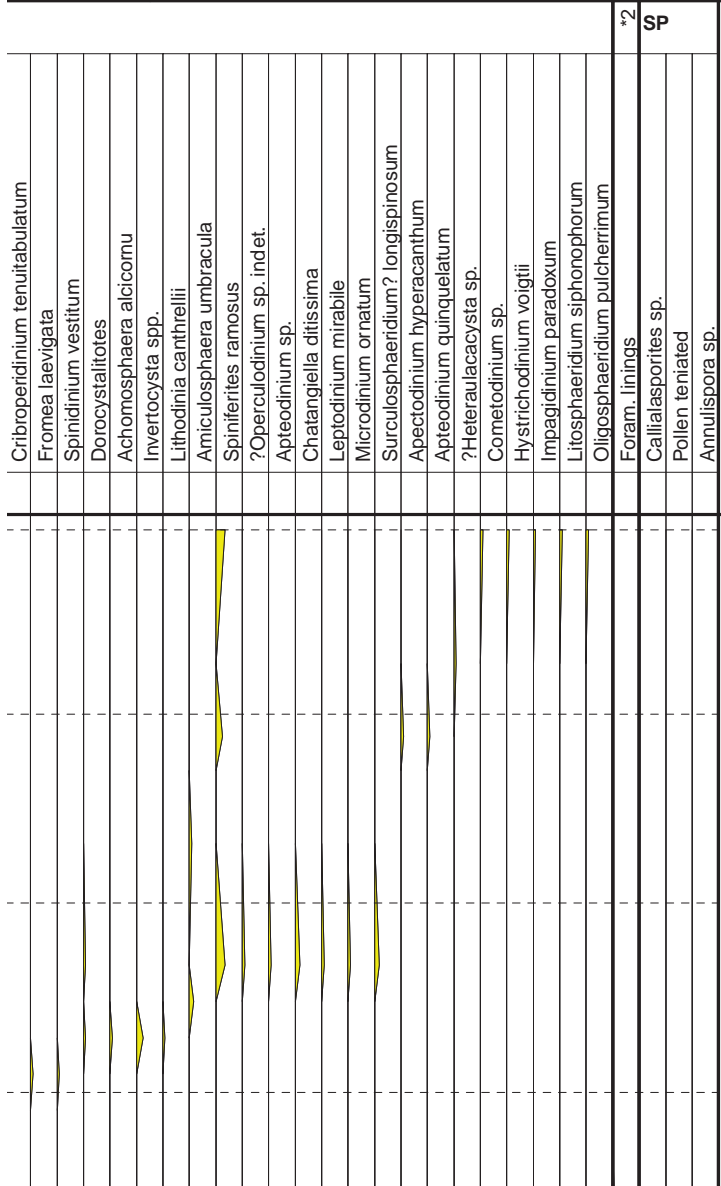


Trinovantedinium glorianum	
Heterosphaeridium difficile	
Phthanoperidinium echinatum	
Thalassiphora delicata	
Trinovantedinium capitatum	
Trithyrodinium verrucosum	
Diconodinium spp.	
Surculosphaeridium? longifurcatum	
Cribroperidinium orthoceras	
Achilleodinium bifurcoides	
Lejeunacysta hyalina	
Cribroperidinium septimentum	
Impagidinium patulum	
Ovoidinium? sp.1 Noehr-Hansen, 1993	
Cyclopsiella spp.	
Lejeunacysta fallax	
Barssidinium graminosum	
Impagidinium sphaericum	
Invertocysta tabulata	
Dinopterygium cladoides	
Heteraulacacysta leptalea	
Rigaudella aemula	
Selenopemphix dionaeacysta	
Cleistosphaeridium multispinosum	
Ovoidinium scabrosum	
Spiniferites mirabilis	
Oligosphaeridium anthophorum	
Microdinium reticulatum	
Spiniferites pseudofurcatus	
Ellipsoidictyumim perfectum	
Impagidinium spp.	
Impagidinium pallidum	
Cyst sp.B	
Pentadinium laticinctum granulatum	
Cyclopsiella? trematophora	
Tectatodinium pelitum	
Invertocysta lacrymosa	
indet. A (cf. Cleistosph.)	
Impagidinium japonicum	
Filisphaera filifera	
Homotryblum floripes	
Circulodinium aff. C. attadalicum	
Endoscrinium pharo	
Chichaouadinium vestitum	
Chlamydothorella nyeii	
Spiniferites bentorii	
Vesperopsis longicornis	
Paroedinia ceratophora	
Canningia ringnesiorum	
Systematophora ancyrea	
Hystrichodinium pulchrum	
Chatangiella granulifera	
Surculosphaeridium longifurcatum	
Chlamydothorella? grossa	
Gonyaulacysta jurassica	
Tanvospaeridium isocalamus	
Rhombodella paucispina	
Deflandrea phosphoritica	
Cerodinium striatum	
Areosphaeridium diktyoplokos	
Apectodinium homomorphum	
Apectodinium quinquelatum	
Canningia reticulata	
Meiourogonyaulax stoveri	
Operculodinium tiara	
Paragonyaulacysta capillosa	
Subtilisphaera pimaensis	
Gonyaulacysta helicoidea	
Palaeoperidinium pyrophorum	
Spiniferites porosus	
Alisocysta sp. 2 Heilmann-Clausen,	
Cassiculosphaeridia magna	
Hapsocysta? benteeae	
Spiniferites septatus	
Habicysta tectata	
Circulosphaeridium distinctum	

	<i>Deflandrea oebisfeldensis</i>	
	<i>Spiniferites cornutus</i>	
	<i>Isabelidinium bakeri</i>	
	<i>Epelidosphaeridia spinosa</i>	
	<i>Chiropteridium dispersum</i>	
	<i>Apteodinium grande</i>	
	<i>Apteodinium nuciforme</i>	
	<i>Gonyaulacysta jurassica longicornis</i>	
	<i>Laciniadinium</i> spp.	
	<i>Meiourgonyaulax caytonensis</i>	
	<i>Florentinia ferax</i>	
	<i>Systematophora placacantha</i>	
	<i>Lingulodinium machaerophorum</i>	
	<i>Pentadinium laticinctum</i>	
	<i>Cometodinium comatum</i>	
	<i>Gardodinium trabeculosum</i>	
	<i>Adnatosphaeridium multispinosum</i>	
	<i>Caligodinium amiculum</i>	
	<i>Fromea amphora</i>	
	<i>Gonyaulacysta cassidata</i>	
	<i>Circulodinium reticulatum</i>	
	<i>Rhynchodiniopsis cladophora</i>	
	<i>Discorsia nanna</i>	
	<i>Trithyrodinium suspectum</i>	
	<i>Cerodinium speciosum</i>	
	<i>Canningia brevispinosa</i>	
	<i>Cleistosphaeridium insolitum</i>	
	<i>Rottnestia borussica</i>	
	<i>Systematophora</i> sp.1	
	<i>Chatangiella madura</i>	
	<i>Trichodinium castanea</i>	
	<i>Paragonyaulacysta calloviense</i>	
	<i>Exochosphaeridium phragmites</i>	
	<i>Chlamydothorella ectotabulata</i>	
	<i>Sirmiodinium grossii</i>	
	<i>Chytroisphaeridia cerastes</i>	
	<i>Perisseiasphaeridium pannosum</i>	
	<i>Impagidinium aculeatum</i>	
	<i>Spinidium balmei</i>	
	<i>Thalassiphora pelagica</i>	
	<i>Spiniferites elongatus</i>	
	<i>Chatangiella spectabilis</i>	
	<i>Deflandrea</i> sp.1	
	<i>Heslertonia heslertonensis</i>	
	<i>Apteodinium</i> sp.1	
	<i>Conneximura fimbriata</i>	
	<i>Lejeunia hyalina</i>	
	<i>Scriniodinium crystallinum</i>	
	<i>Pseudoceeratum pelliferum</i>	
	<i>Chatangiella tripartita</i>	
	<i>Litospaeridium siphonophorum</i>	
	<i>Atopodinium haromense</i>	
	<i>Endoscrinium galeritum</i>	
	<i>Cribrerodinium tensifense</i>	
	<i>Selenopemphix</i> sp.1	
	<i>Spongodinium delittiense</i>	
	<i>Achomosphaera? neptuni</i>	
	<i>Dinogymnium cerviculum</i>	
	<i>Litospaeridium arundum</i>	
	<i>Ovoidinium verrucosum</i>	
	<i>Pterodinium cingulatum</i>	
	<i>Adnatosphaeridium caulleryi</i>	
	<i>Circulosphaeridium longispinosum</i>	
	<i>Escharisphaeridia pocockii</i>	
	<i>Evansia evittii</i>	
	<i>Impletosphaeridium whitei</i>	
	<i>Lithodinia stoveri</i>	
	<i>Chlamydothorella trabeculosa</i>	
	<i>Kiokansium polytypes</i>	
	<i>Oligosphaeridium asterigerum</i>	
	<i>Oligosphaeridium poculum</i>	
	<i>Pseudoceeratum polymorphum</i>	
	<i>Pseudoceeratum toveae</i>	
	<i>Rhynchodiniopsis pitana</i>	
	<i>Stephodinium coronatum</i>	
	<i>Muderongia tetraecantha</i>	
	<i>Cordosphaeridium cantharellum</i>	

# IKU Petroleum Research

## Trondheim, Norway



### Chart Key

- Category Key
- Acritarchs
  - Algae
  - Botryococcus and pediatrum
  - Dinoflagellate cysts
  - Foraminifera
  - Spores and pollen
- Distribution Scale  
15mm = 50 counts
- Chrono. Chronostratigraphy
- AC Acritarchs
  - \*1 Botryococcus and pediatrum
  - \*2 Foraminifera
  - SP Spores and pollen

