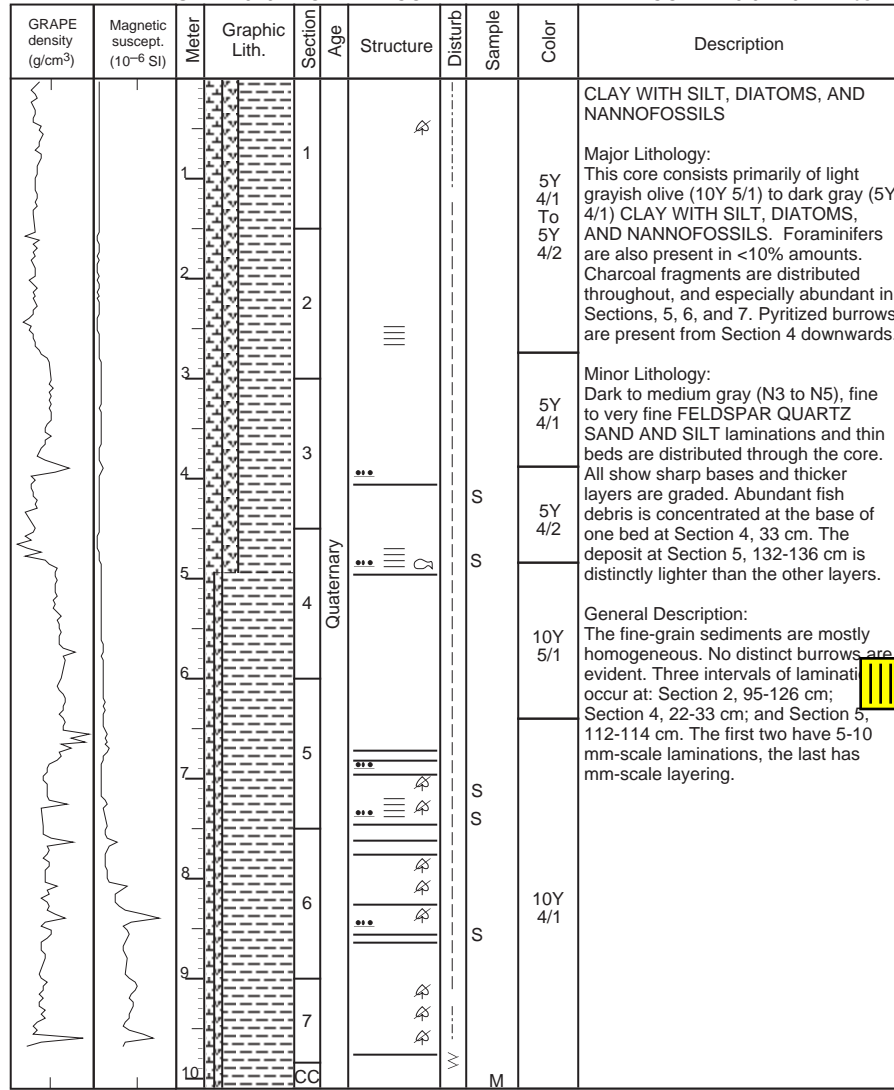


SITE 1019 HOLE A CORE 1H CORED 0.0 - 10.1 mbsf



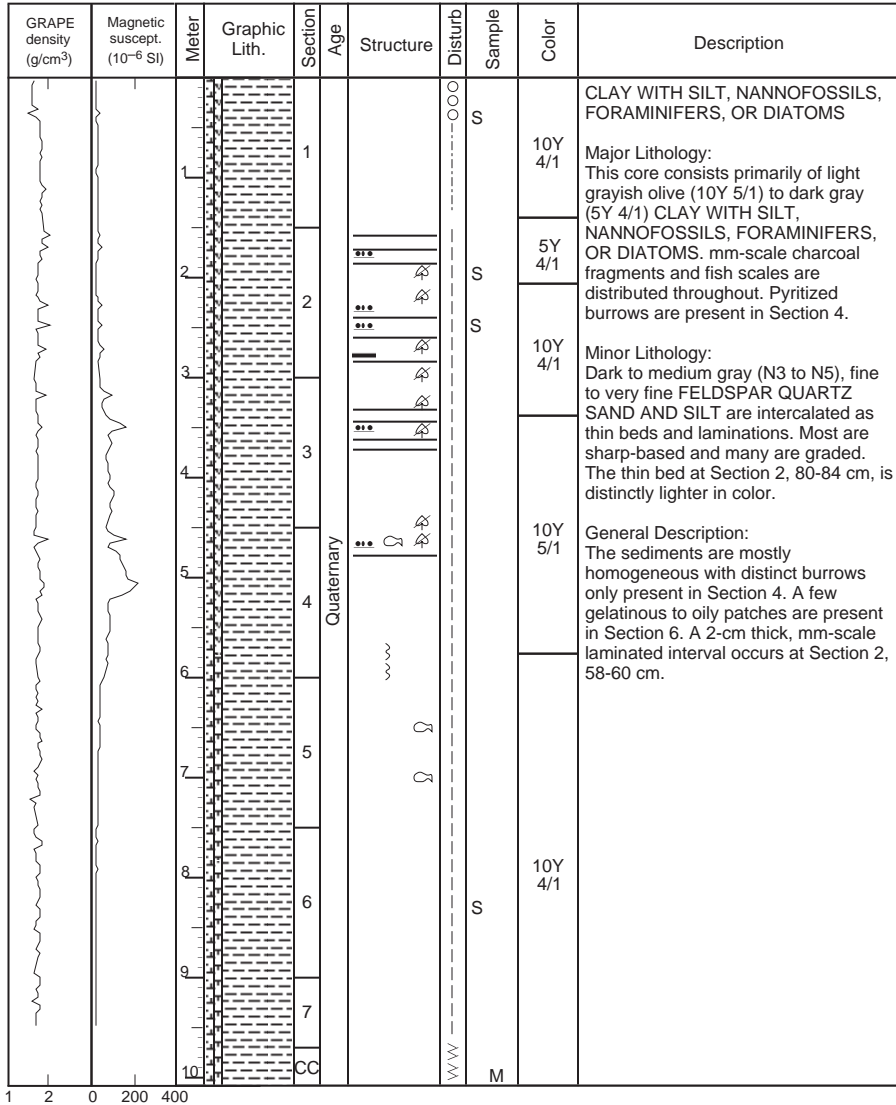
1.5 1.75 0 100 200

Previous Chapter

Table of Contents

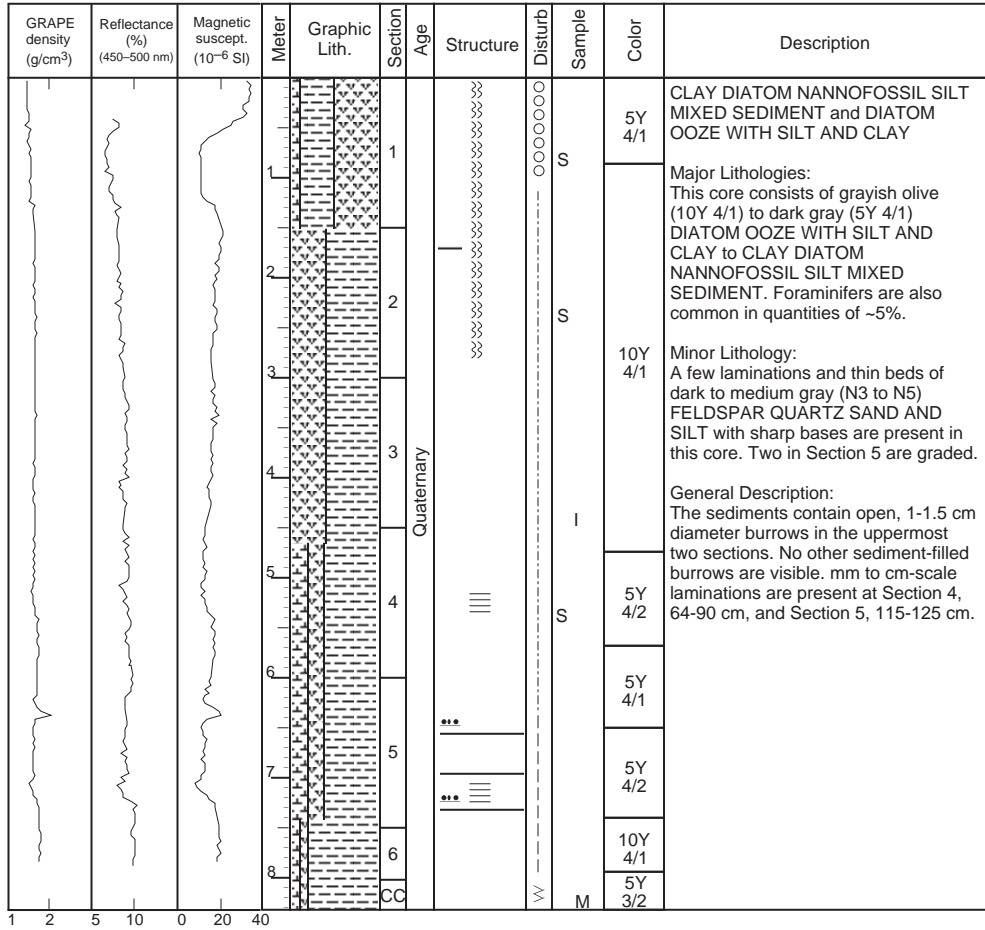
Next Chapter

SITE 1019 HOLE B CORE 1H CORED 0.0 - 10.1 mbsf



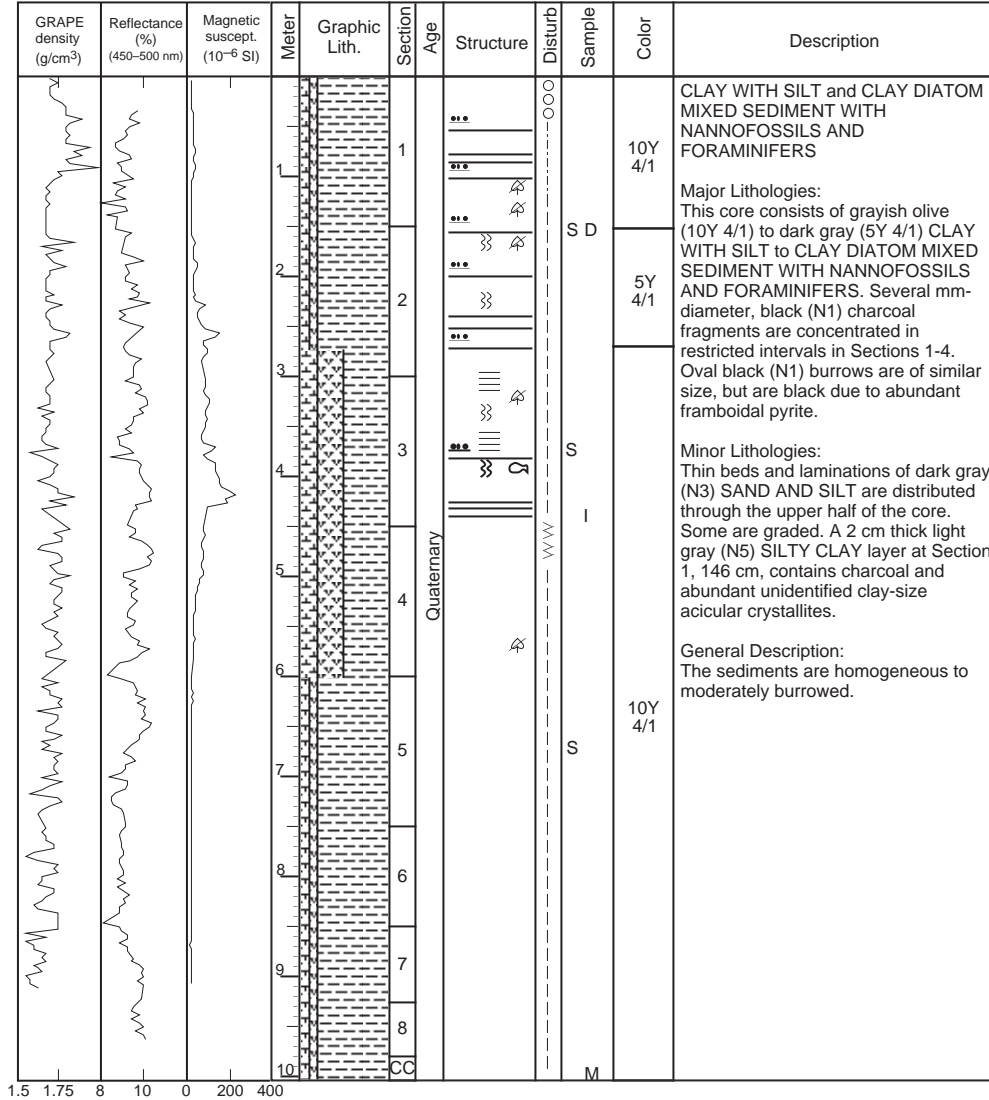
SITE 1019 HOLE C CORE 1H

CORED 0.0 - 8.3 mbsf



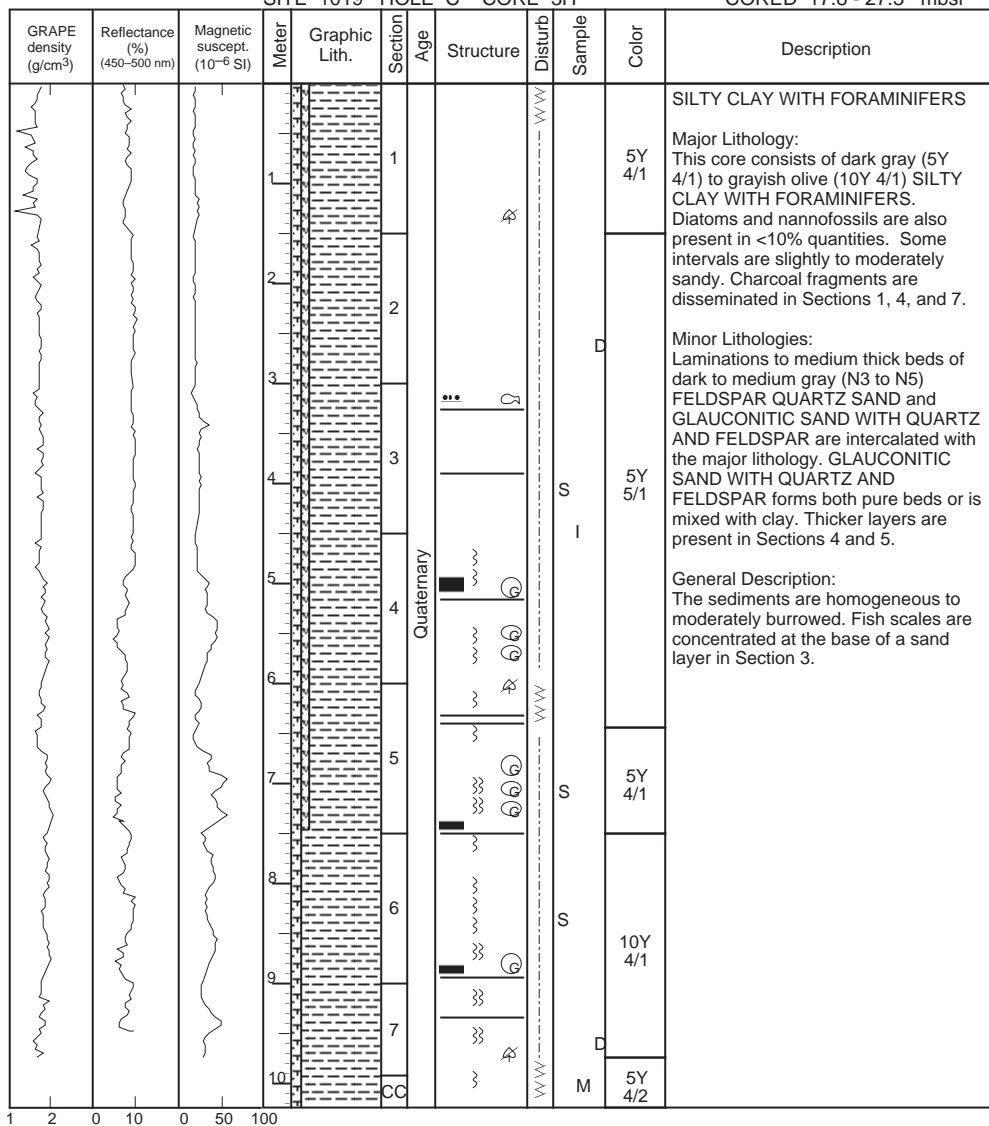
SITE 1019 HOLE C CORE 2H

CORED 8.3 - 17.8 mbsf

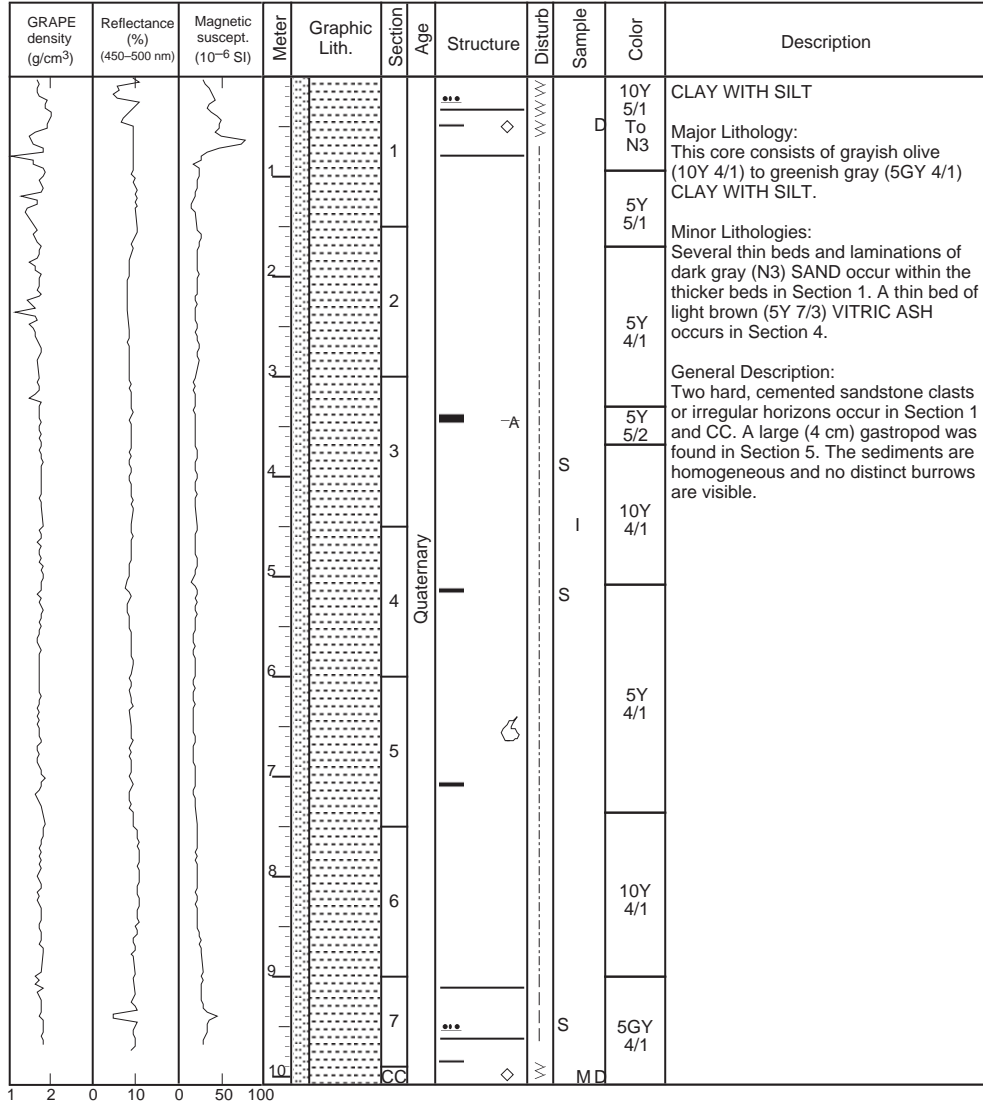


SITE 1019 HOLE C CORE 3H

CORED 17.8 - 27.3 mbsf

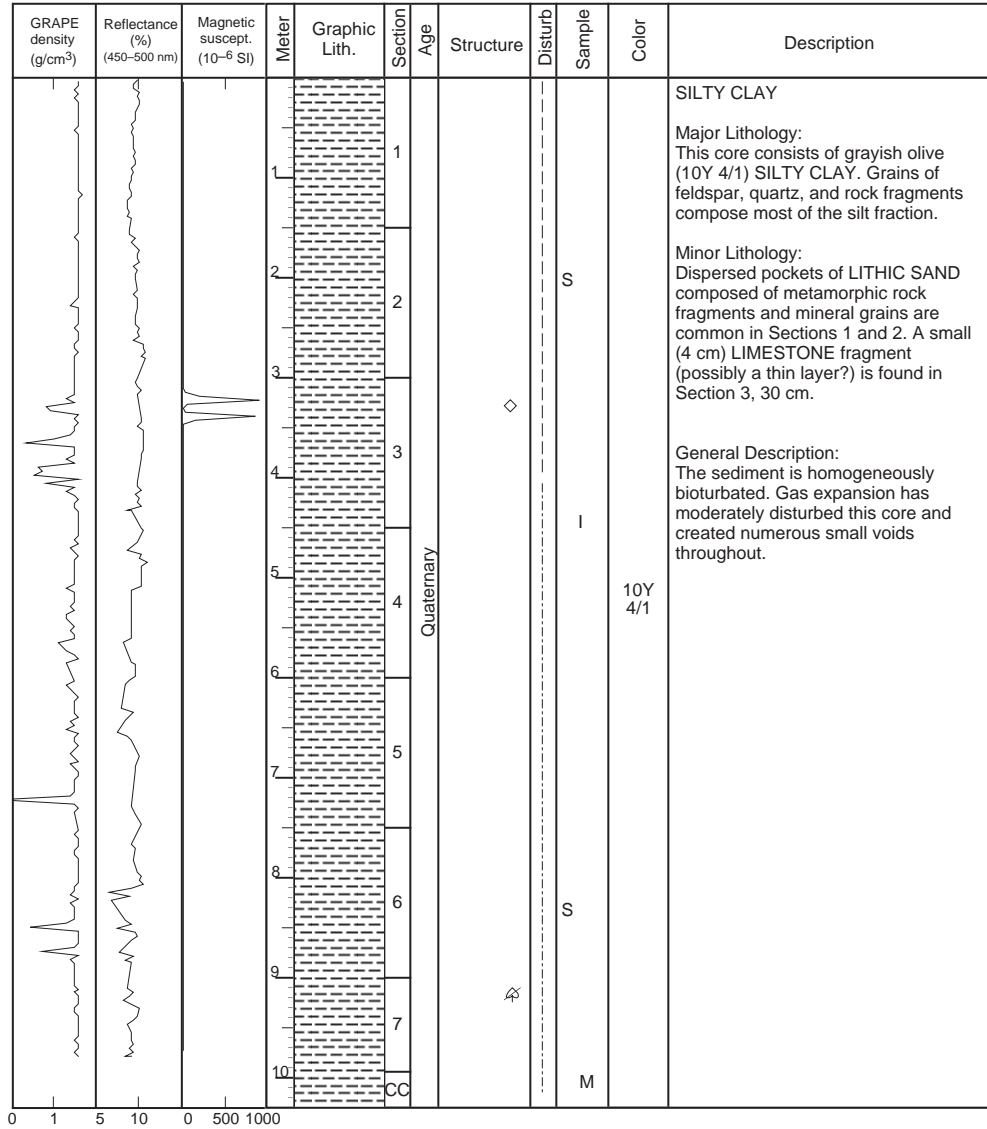


SITE 1019 HOLE C CORE 4H CORED 27.3 - 36.8 mbsf



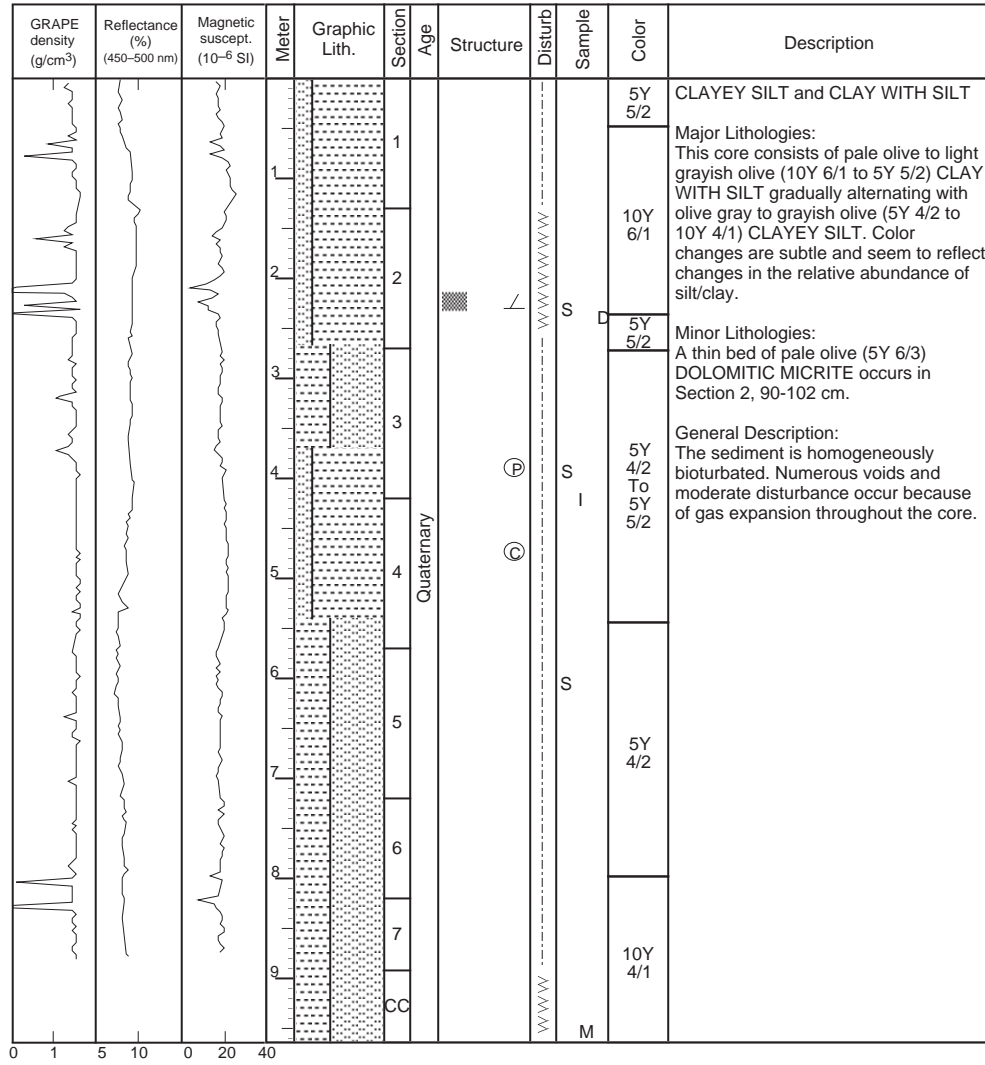
SITE 1019 HOLE C CORE 5H

CORED 36.8 - 46.3 mbsf



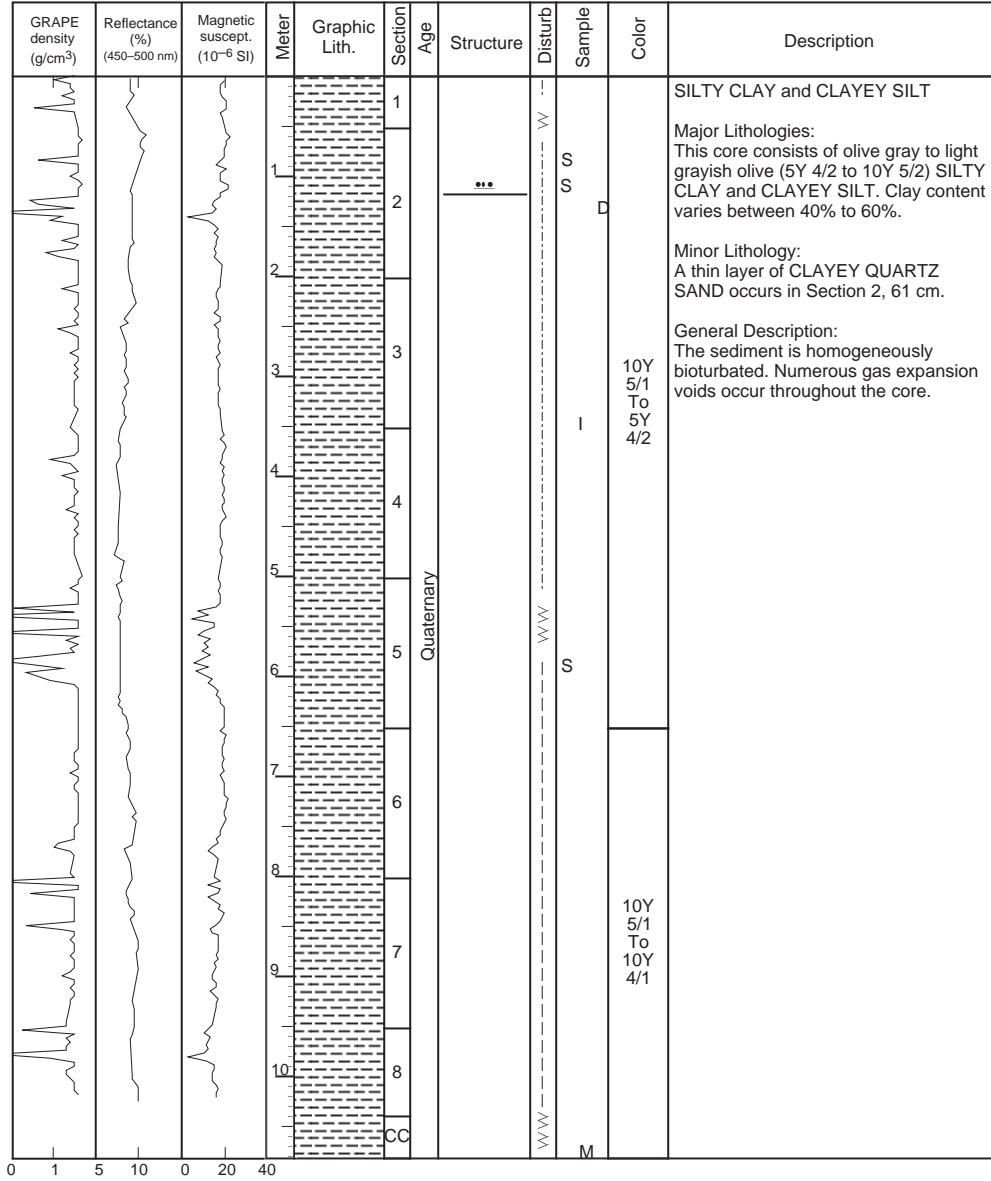
SITE 1019 HOLE C CORE 6H

CORED 46.3 - 55.8 mbsf

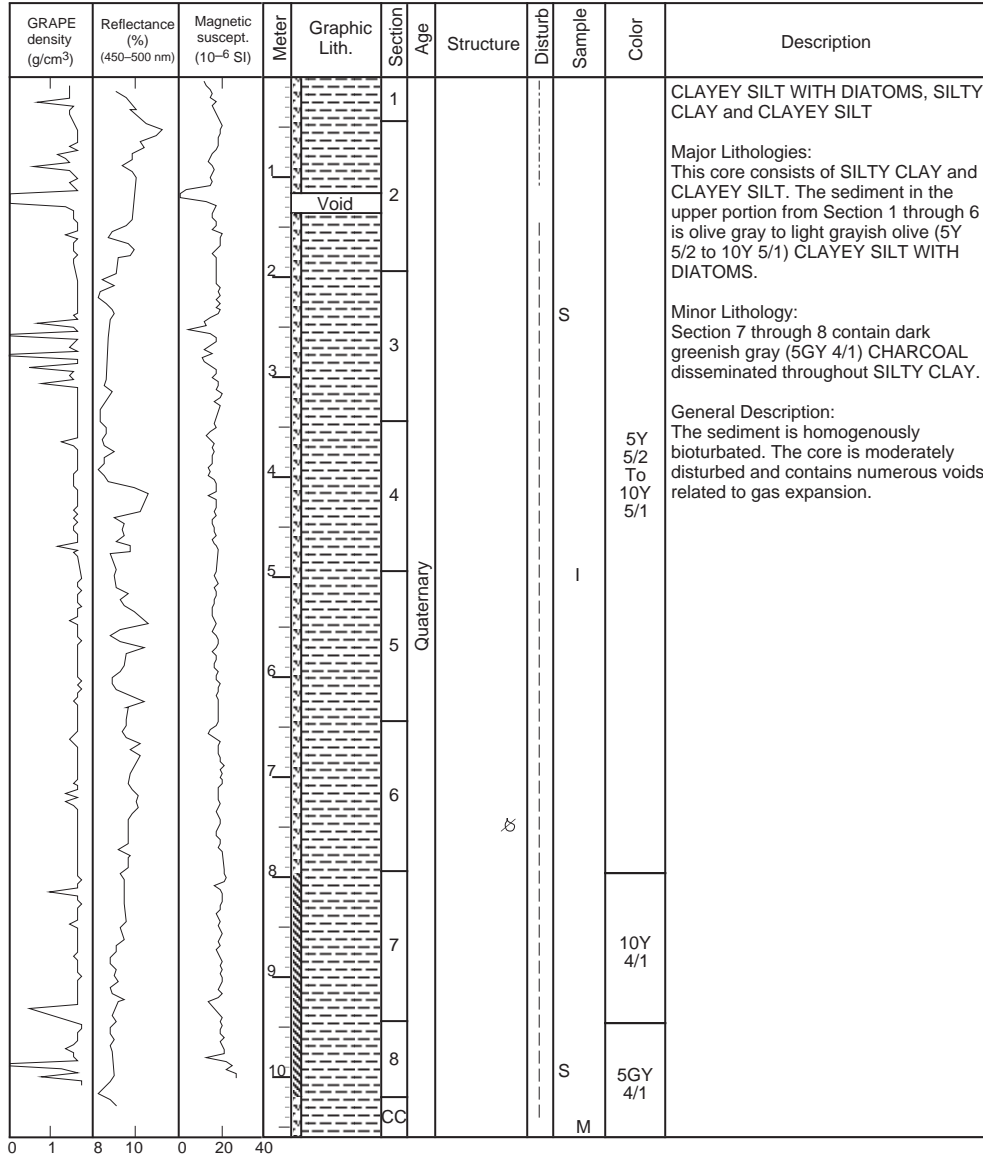


SITE 1019 HOLE C CORE 7H

CORED 55.8 - 65.3 mbsf

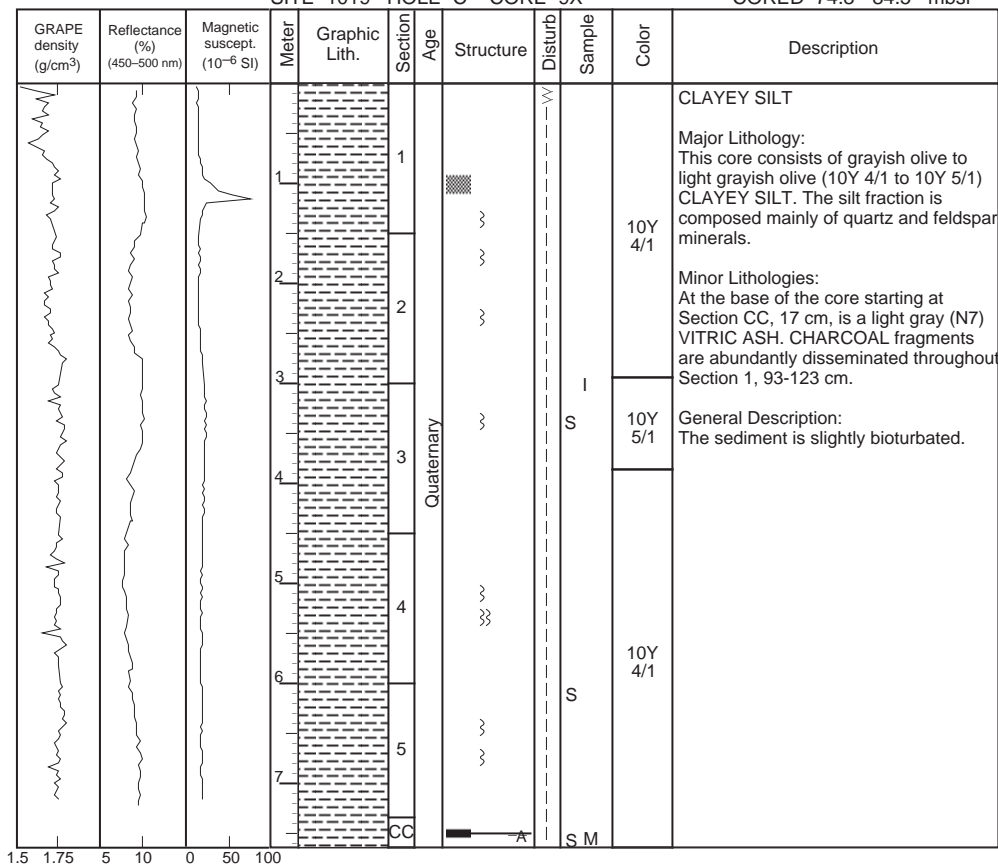


SITE 1019 HOLE C CORE 8H CORED 65.3 - 74.8 mbsf

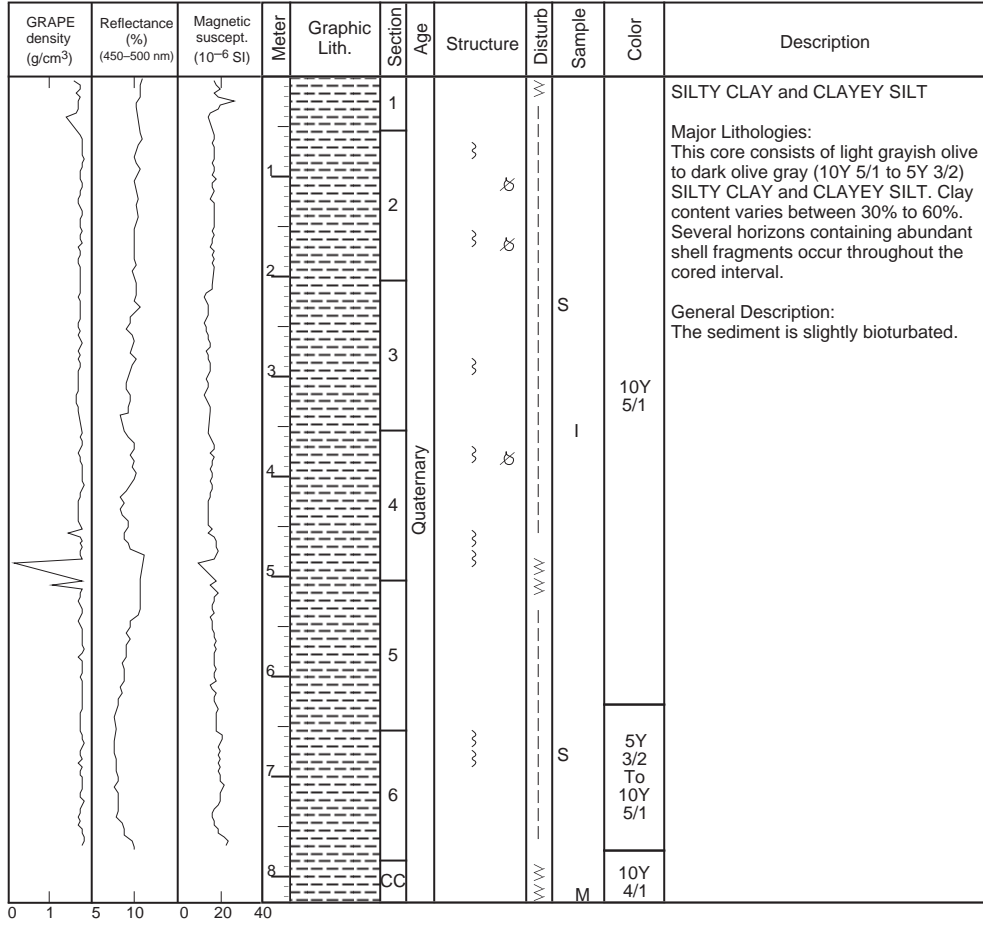


SITE 1019 HOLE C CORE 9X

CORED 74.8 - 84.5 mbsf

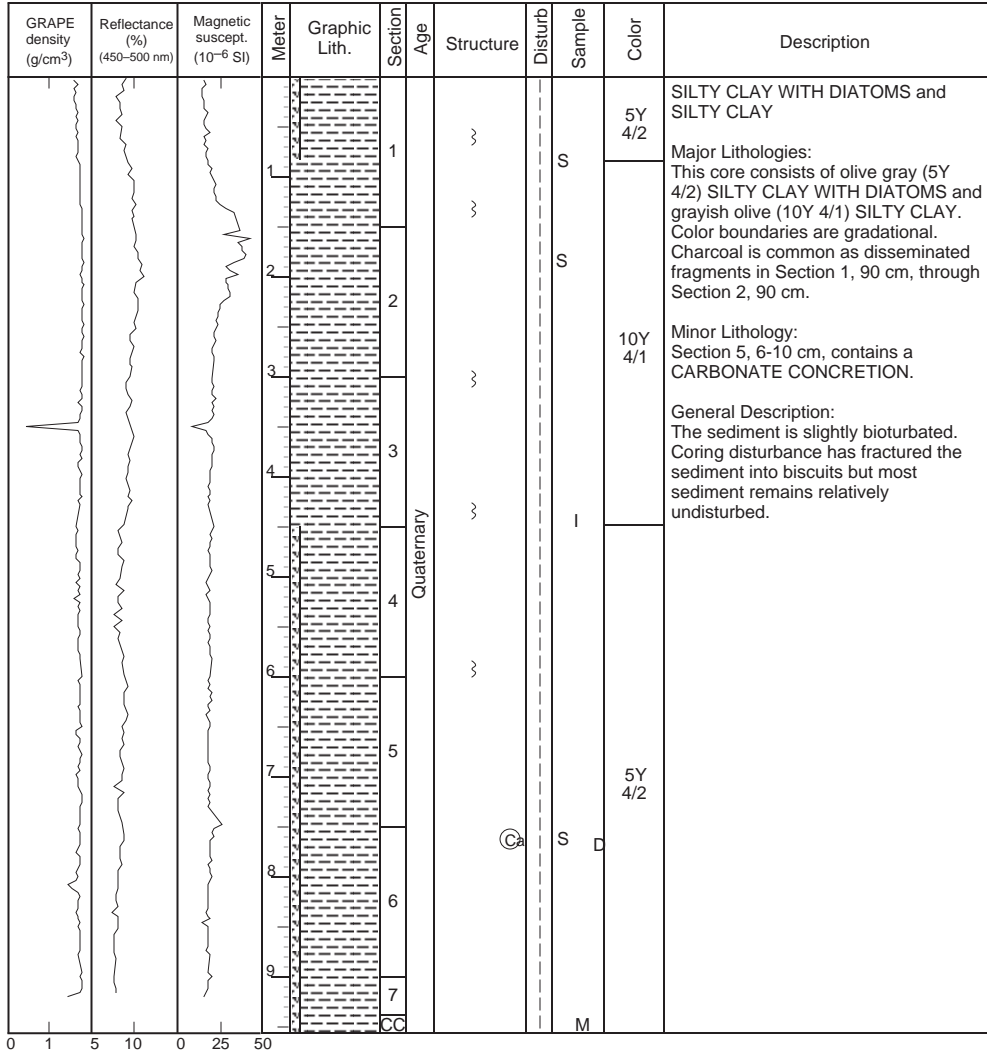


SITE 1019 HOLE C CORE 10X CORED 84.5 - 94.1 mbsf

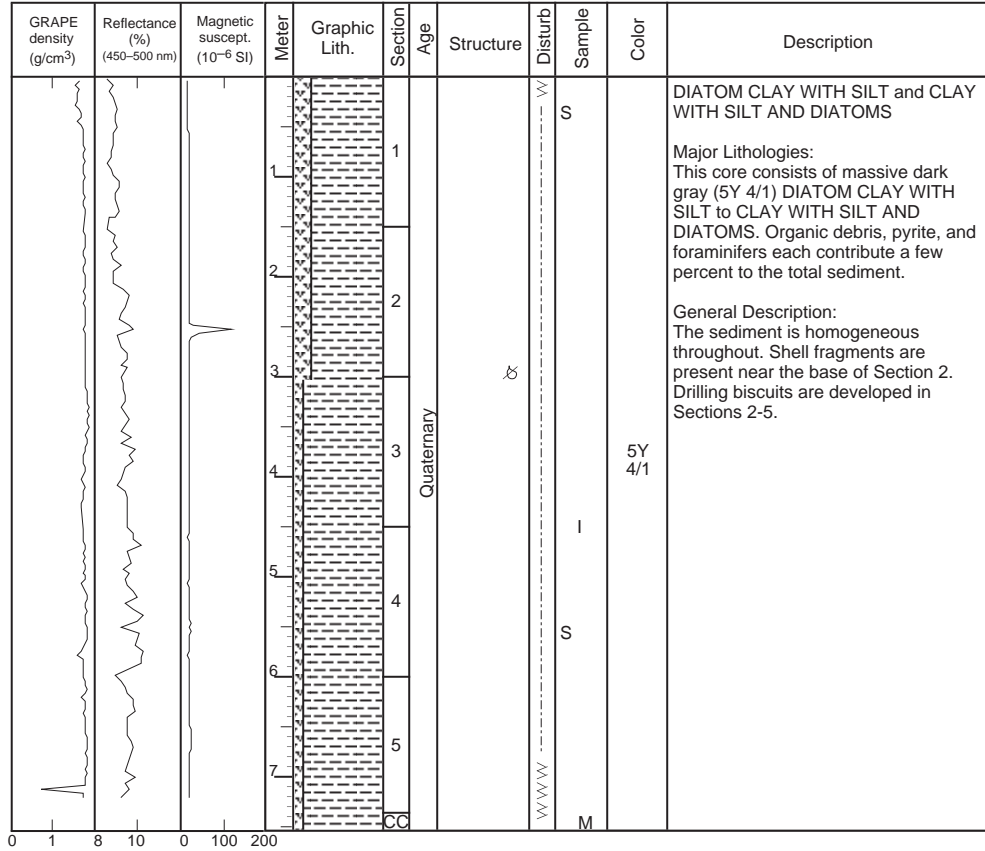


SITE 1019 HOLE C CORE 11X

CORED 94.1 - 103.7 mbsf

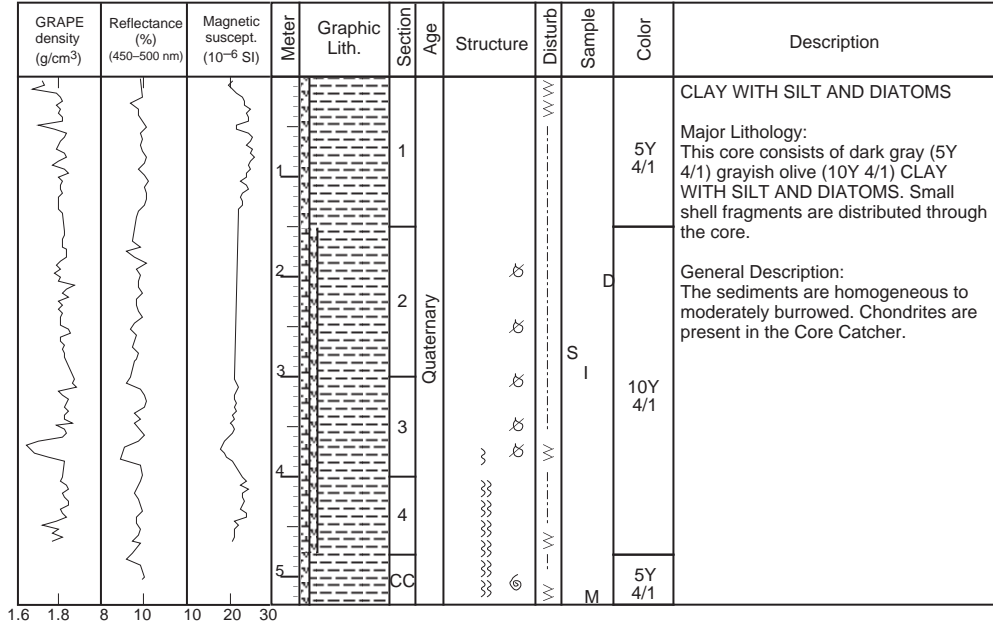


SITE 1019 HOLE C CORE 12X CORED 103.7 - 113.3 mbsf

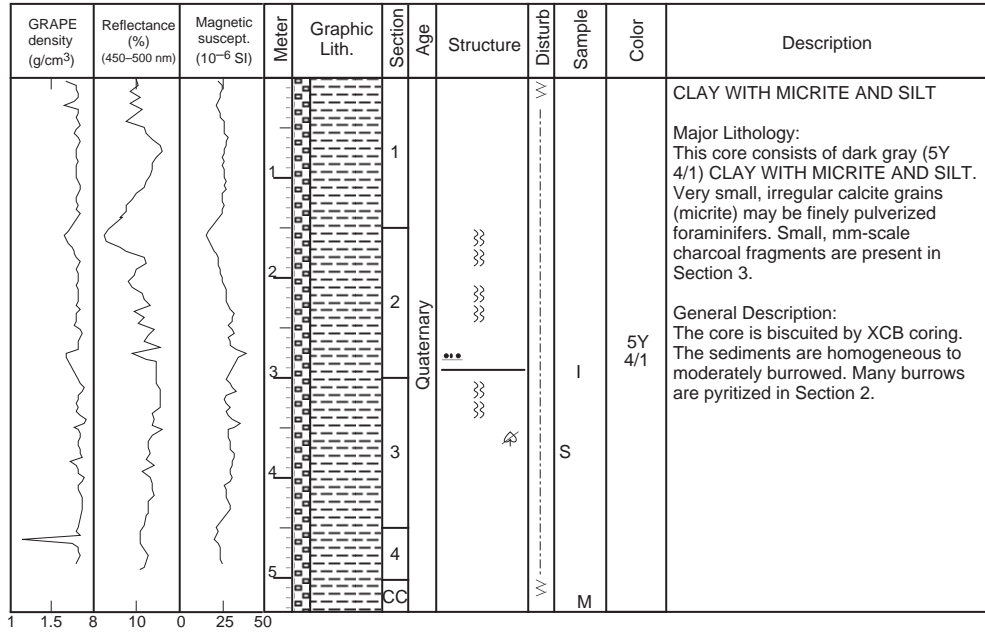


SITE 1019 HOLE C CORE 13X

CORED 113.3 - 122.9 mbsf

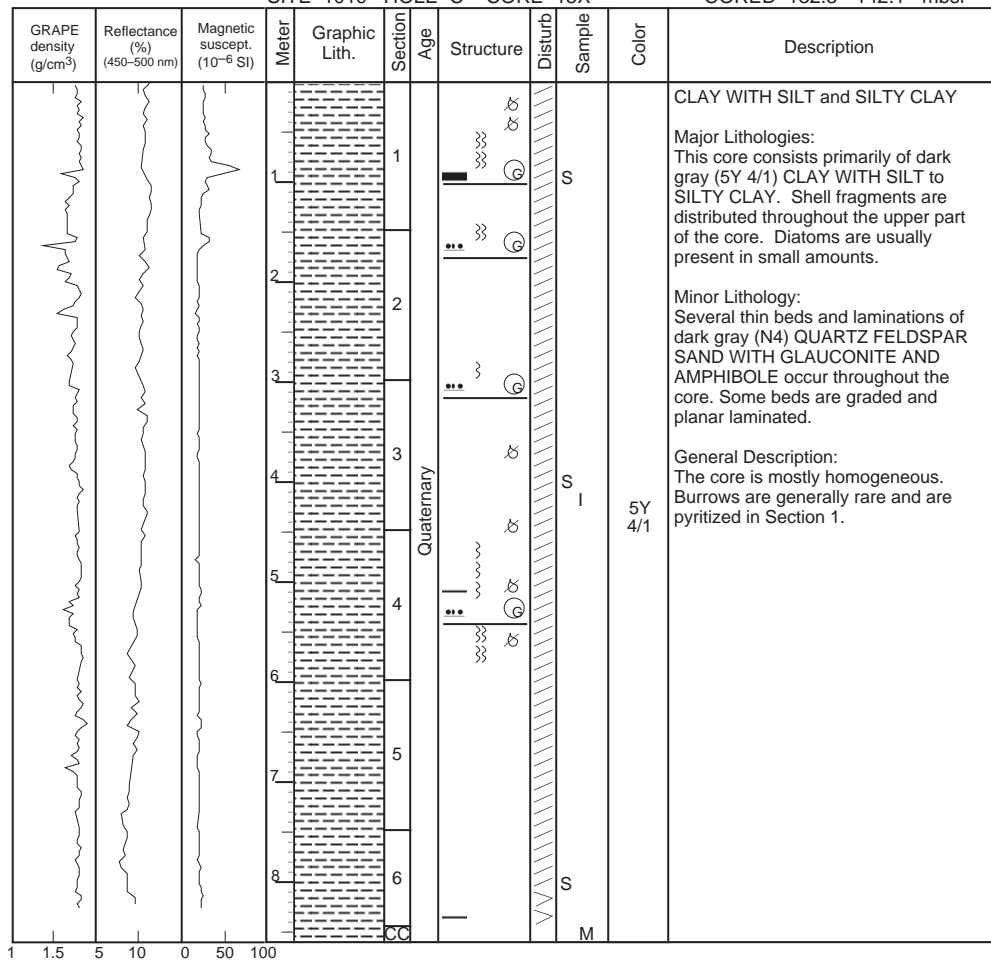


SITE 1019 HOLE C CORE 14X CORED 122.9 - 132.5 mbsf

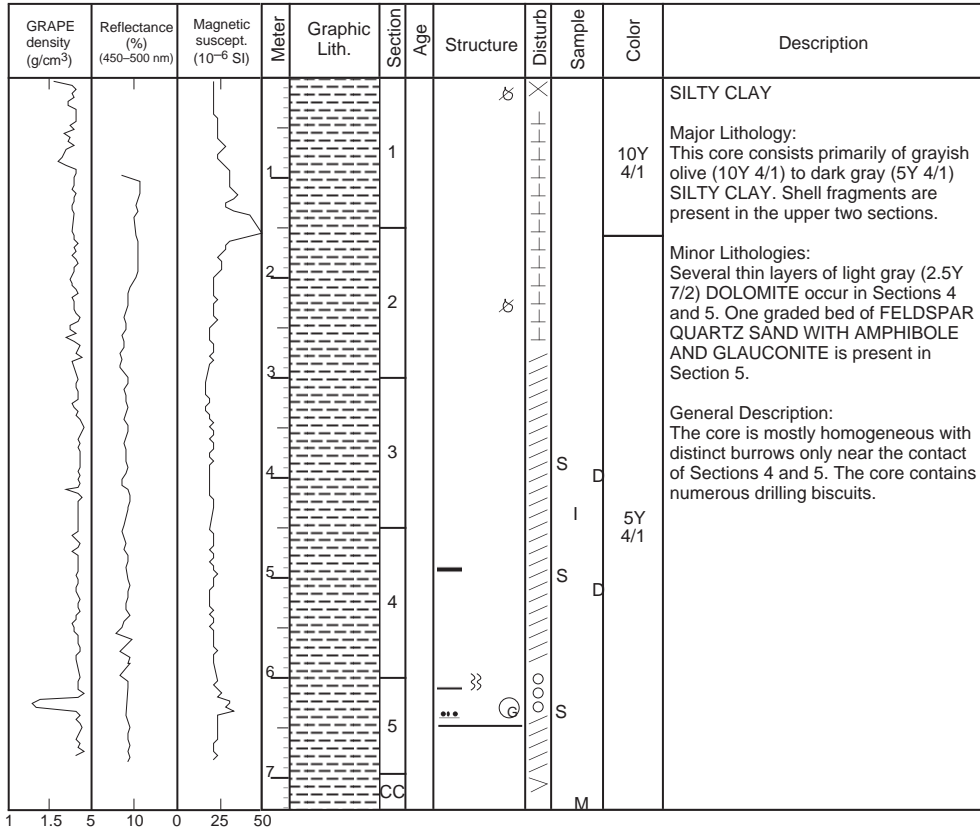


SITE 1019 HOLE C CORE 15X

CORED 132.5 - 142.1 mbsf

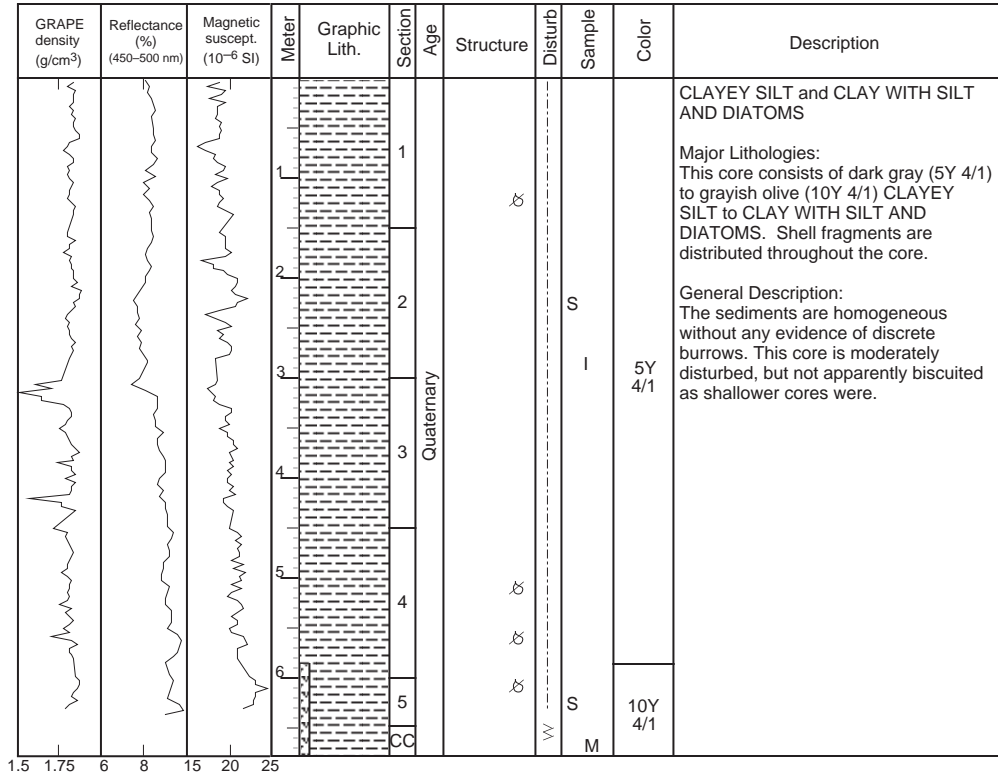


SITE 1019 HOLE C CORE 16X CORED 142.1 - 151.7 mbsf

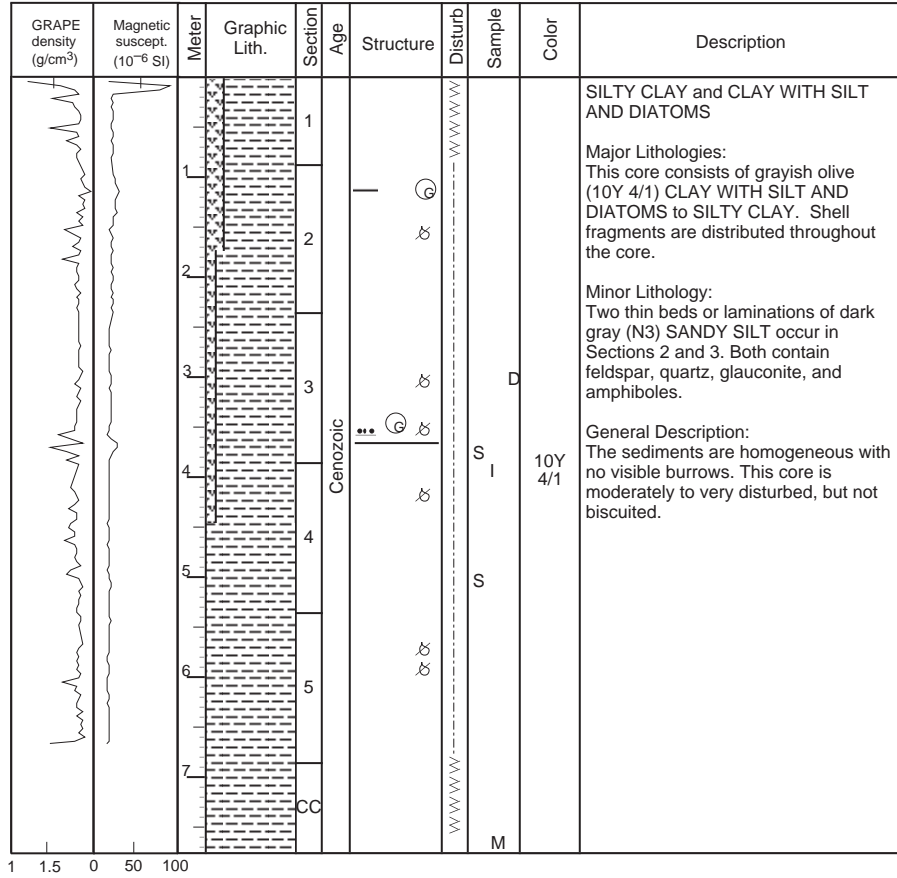


SITE 1019 HOLE C CORE 17X

CORED 151.7 - 161.3 mbsf

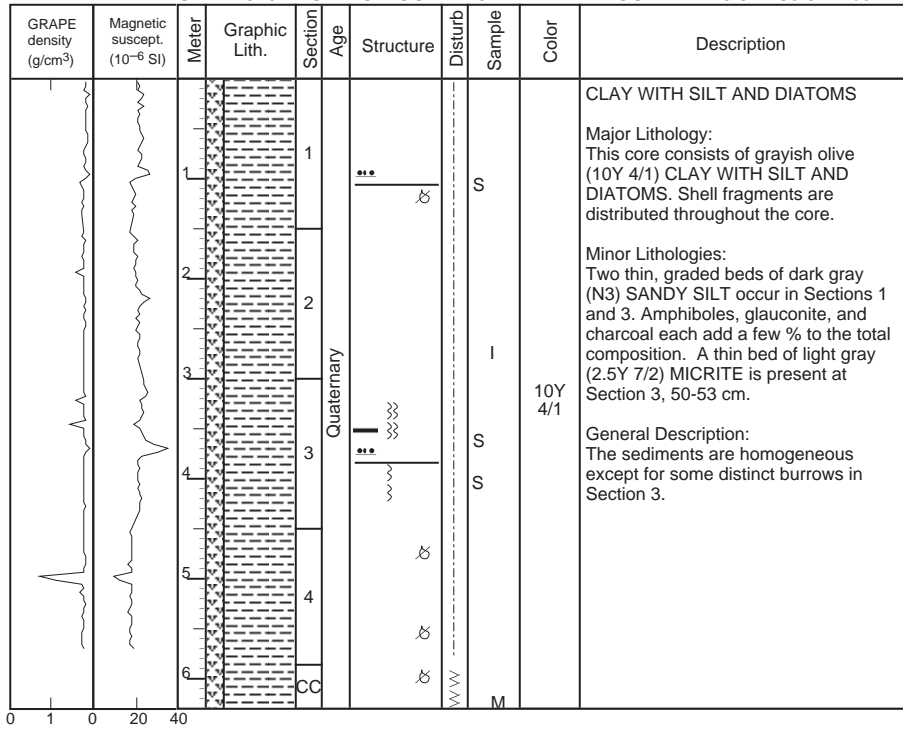


SITE 1019 HOLE C CORE 18X CORED 161.3 - 170.9 mbsf

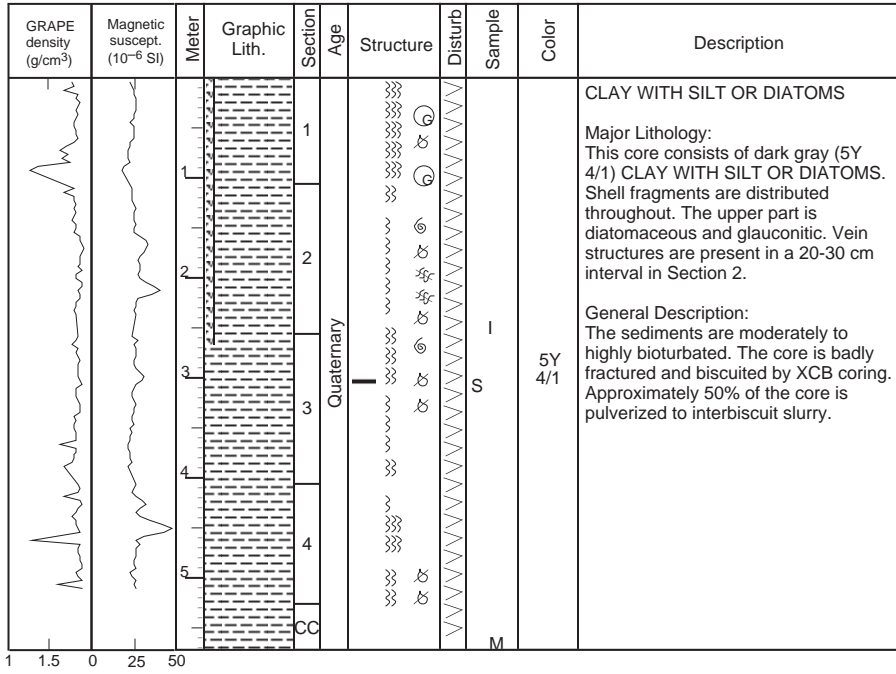


SITE 1019 HOLE C CORE 19X

CORED 170.9 - 180.5 mbsf



SITE 1019 HOLE C CORE 20X CORED 180.5 - 190.1 mbsf

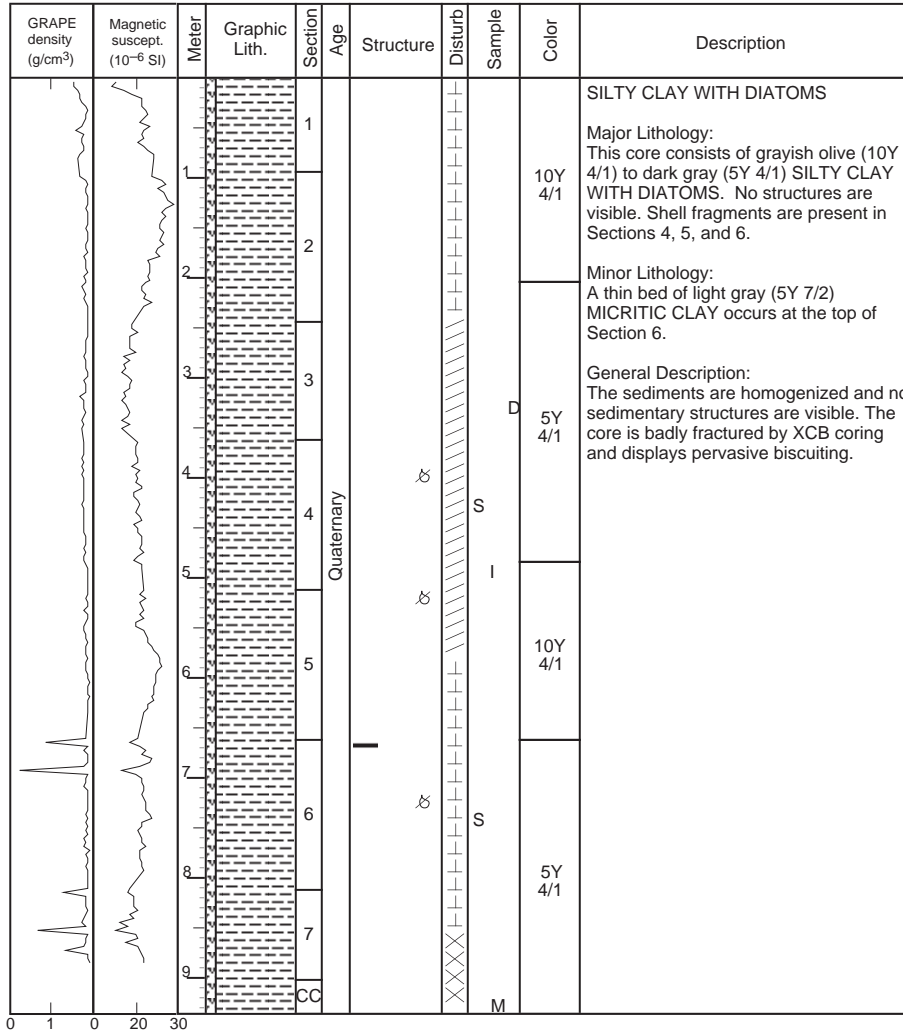


1 1.5 0 25 50

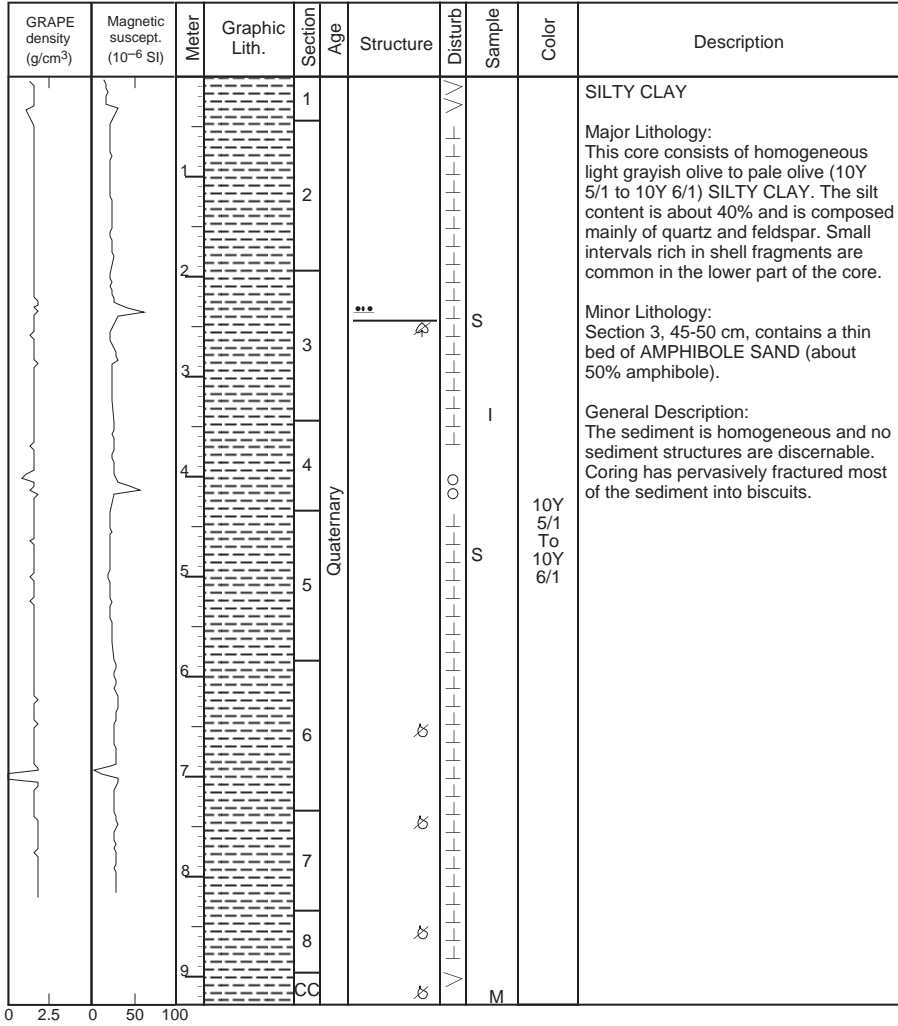


SITE 1019 HOLE C CORE 21X

CORED 190.1 - 199.7 mbsf

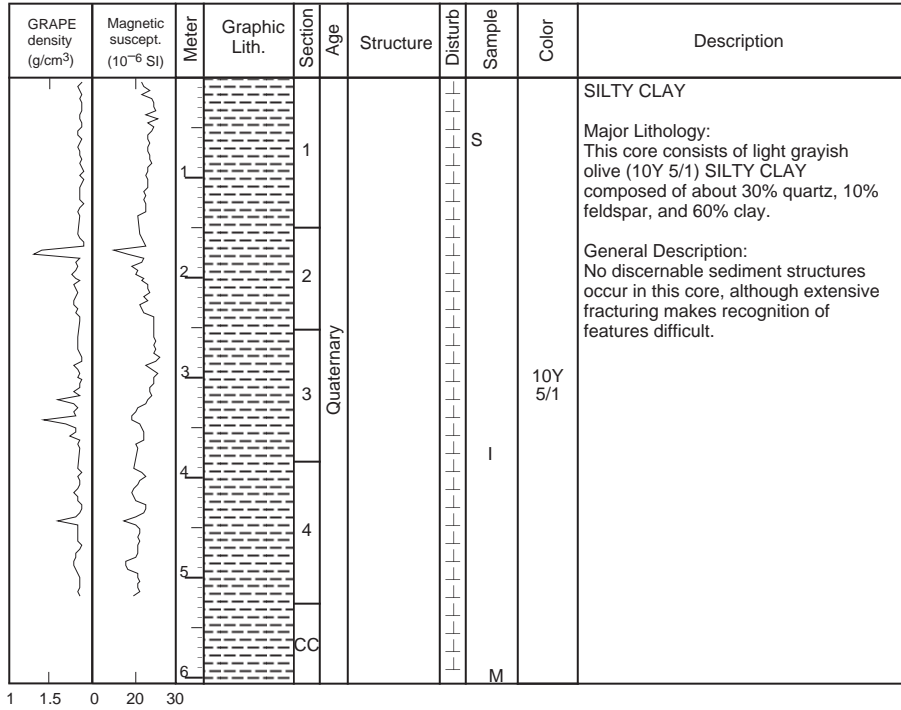


SITE 1019 HOLE C CORE 22X CORED 199.7 - 209.3 mbsf



SITE 1019 HOLE C CORE 23X

CORED 209.3 - 219.0 mbsf



SITE 1019 HOLE C CORE 24X CORED 219.0 - 228.6 mbsf

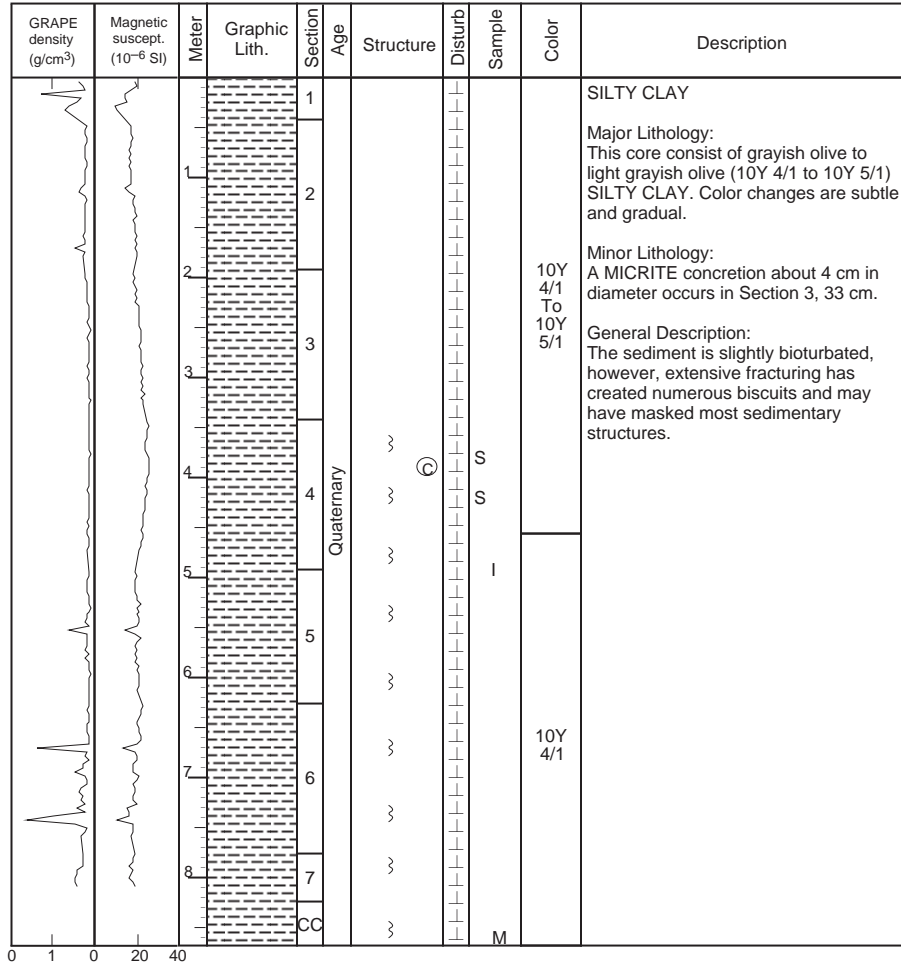
GRAPE density (g/cm ³)	Magnetic suscept. (10 ⁻⁶ SI)	Meter	Graphic Lith.	Section	Age	Structure	Disturb	Sample	Color	Description
				1	Quaternary			S	5Y 4/2	<p>SILTY CLAY and CLAY WITH SILT AND DIATOMS</p> <p>Major Lithologies: This core consists of olive gray (5Y 4/2) CLAY WITH SILT AND DIATOMS and grayish olive (10Y 4/1) SILTY CLAY. The color and compositional changes are gradational.</p> <p>General Description: The sediment is slightly bioturbated, however, extensive fracturing has created numerous biscuits and may have masked most sedimentary structures. Note: Sediment from Section 1 is fissile and soft while the rest of the core is firm.</p>
				2						
				3						
				4						
				5						
				CC						

1 1.5 0 20 30



SITE 1019 HOLE C CORE 25X

CORED 228.6 - 238.2 mbsf



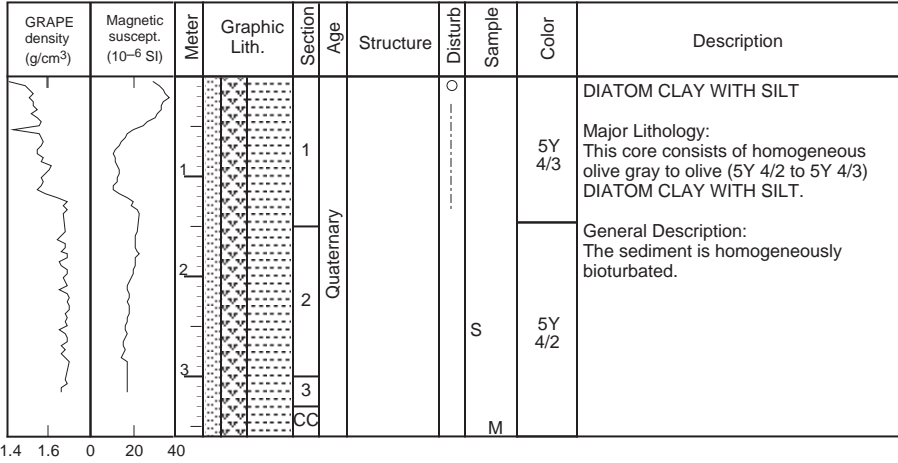
SITE 1019 HOLE C CORE 26X CORED 238.2 - 247.8 mbsf

GRAPE density (g/cm ³)	Magnetic suscept. (10 ⁻⁶ SI)	Meter	Graphic Lith.	Section	Age	Structure	Disturb	Sample	Color	Description
		1		1						<p>CLAY WITH SILT AND DIATOMS and SILTY CLAY</p> <p>Major Lithologies: This core consists of dark gray to medium dark gray (5Y 4/1 to N4) CLAY WITH SILT AND DIATOMS and grayish olive (10Y 4/1) SILTY CLAY. A thin interval showing black stringers of mud veins(?) occurs in Section 2, at about 70 cm.</p> <p>General Description: The sediment is slightly to moderately bioturbated, however, extensive fracturing has created numerous biscuits which masks most sedimentary structures.</p>
		1		2		I<I		S	5Y 4/1	
		2		3						
		3		4						
		4		5				I	N4	
		5		6						
		6		7						
		7		8					10Y 4/1	
		8		9				S		
				CC				M		

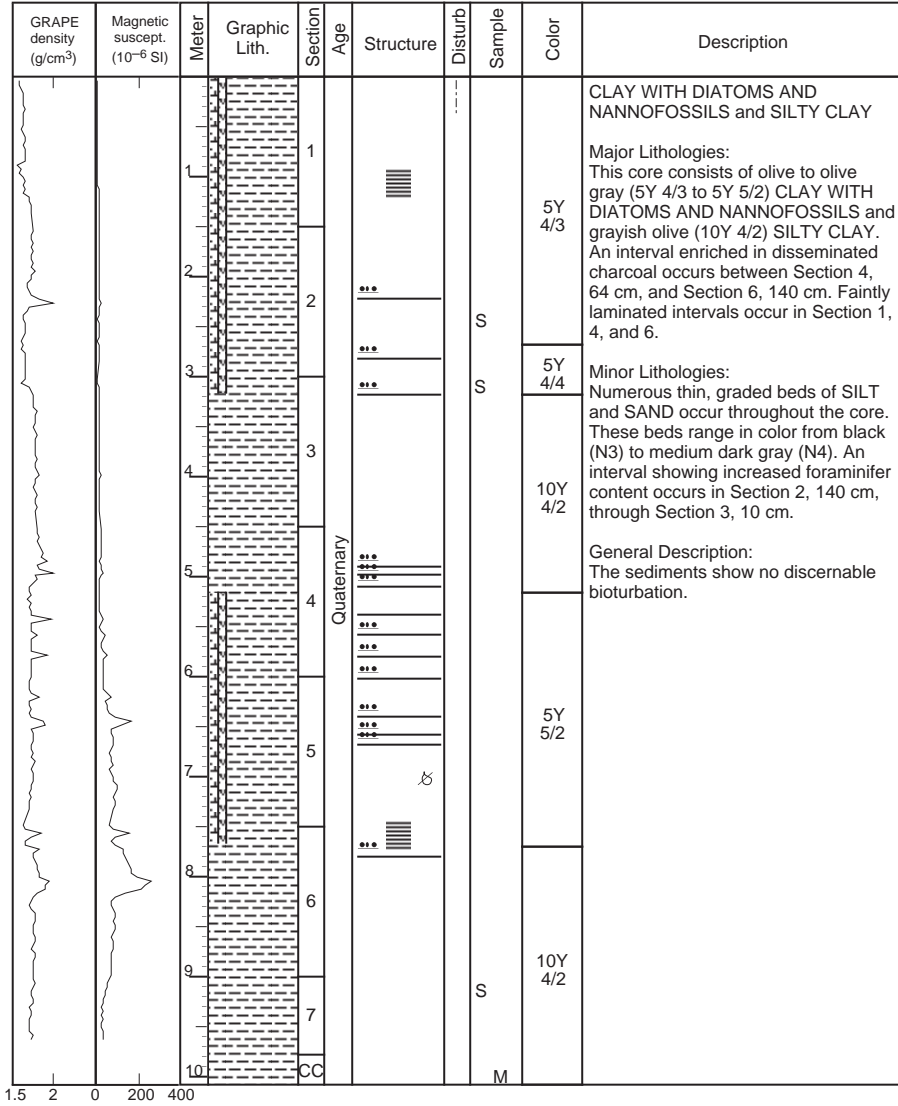
0 1 0 50 100

SITE 1019 HOLE D CORE 1H

CORED 0.0 - 3.6 mbsf

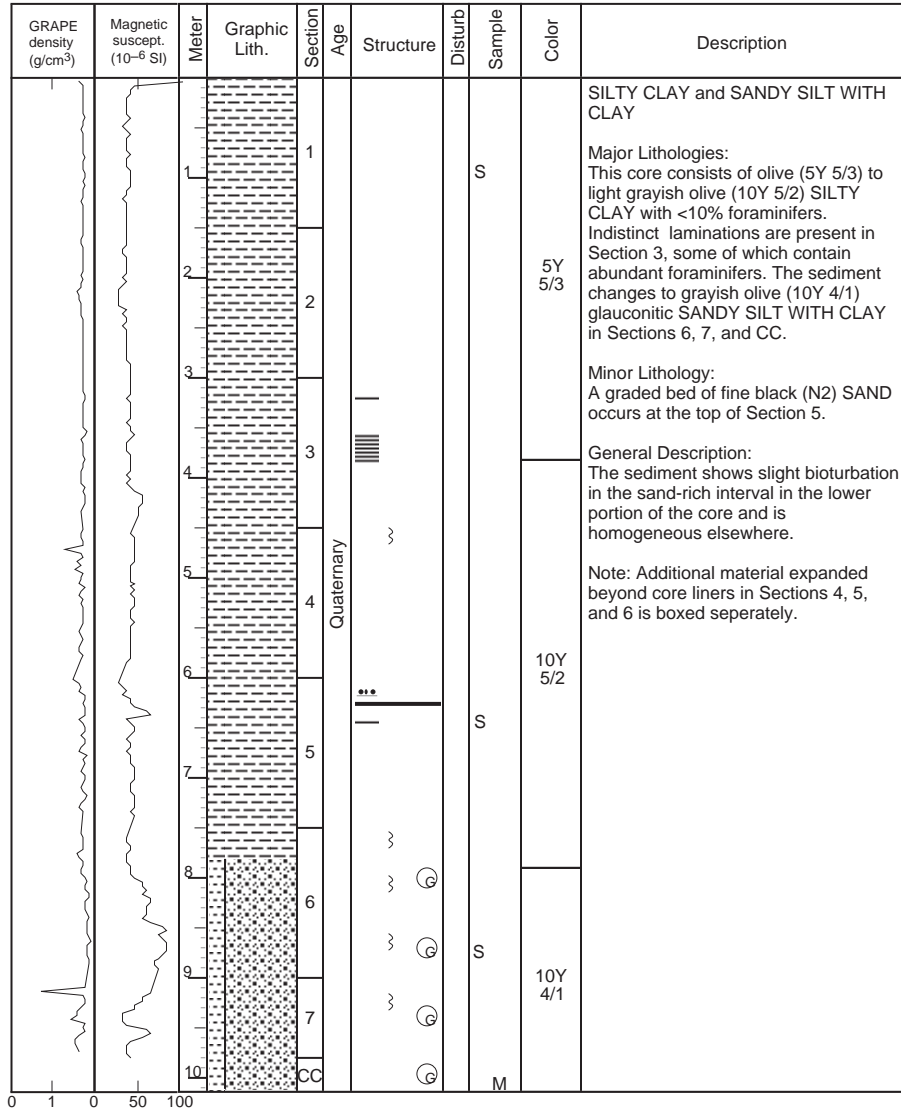


SITE 1019 HOLE D CORE 2H CORED 3.6 - 13.1 mbsf

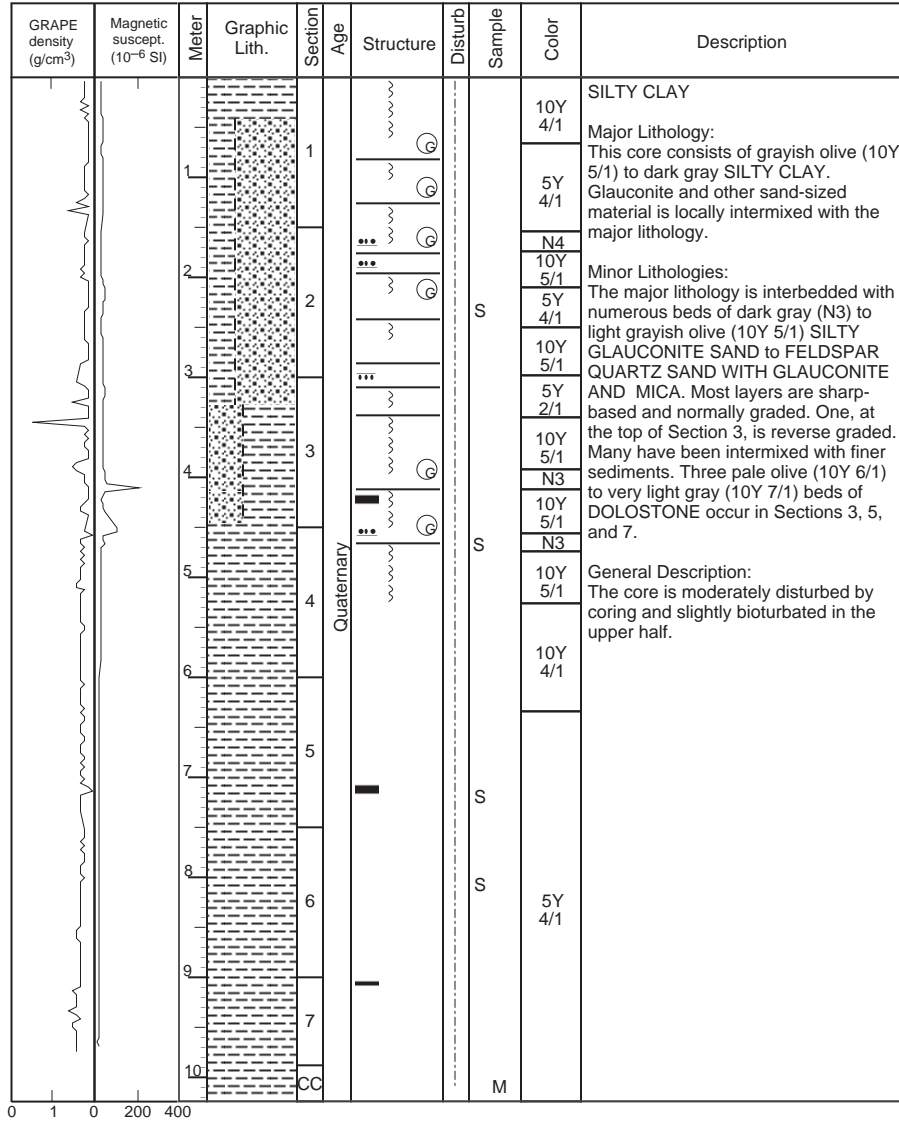


SITE 1019 HOLE D CORE 3H

CORED 13.1 - 22.6 mbsf

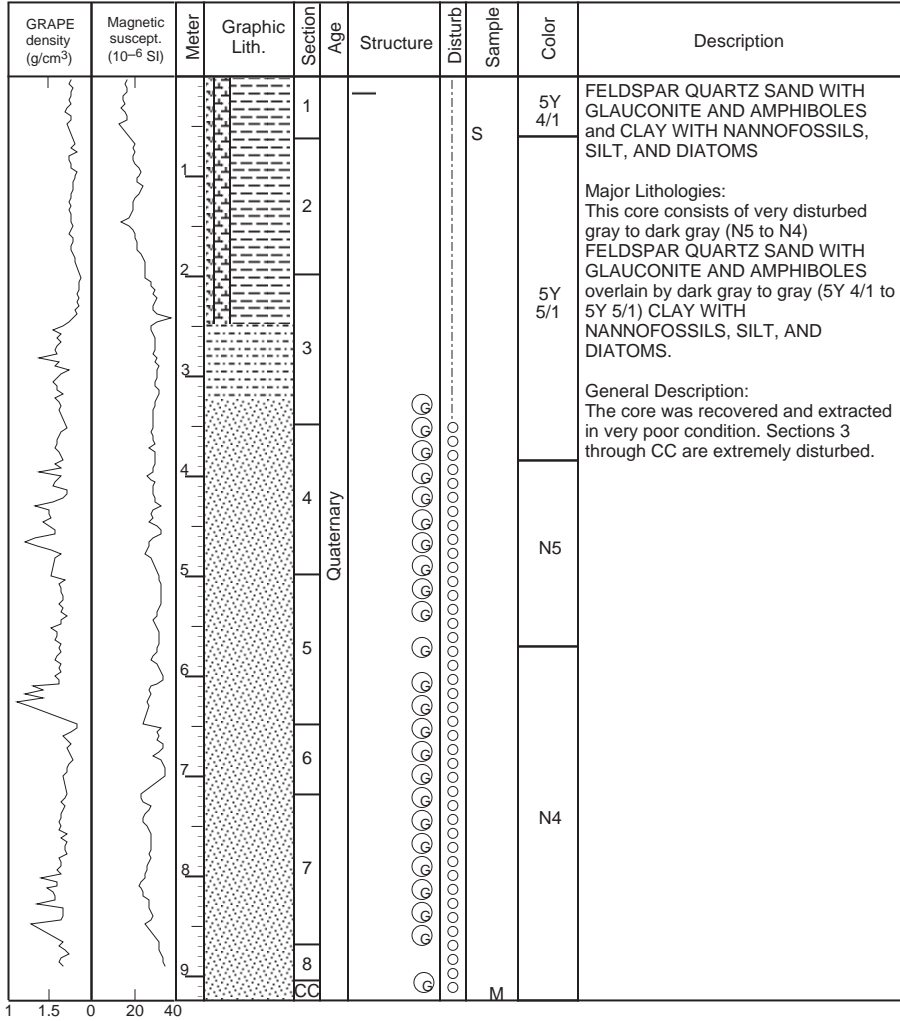


SITE 1019 HOLE D CORE 4H CORED 22.6 - 32.1 mbsf

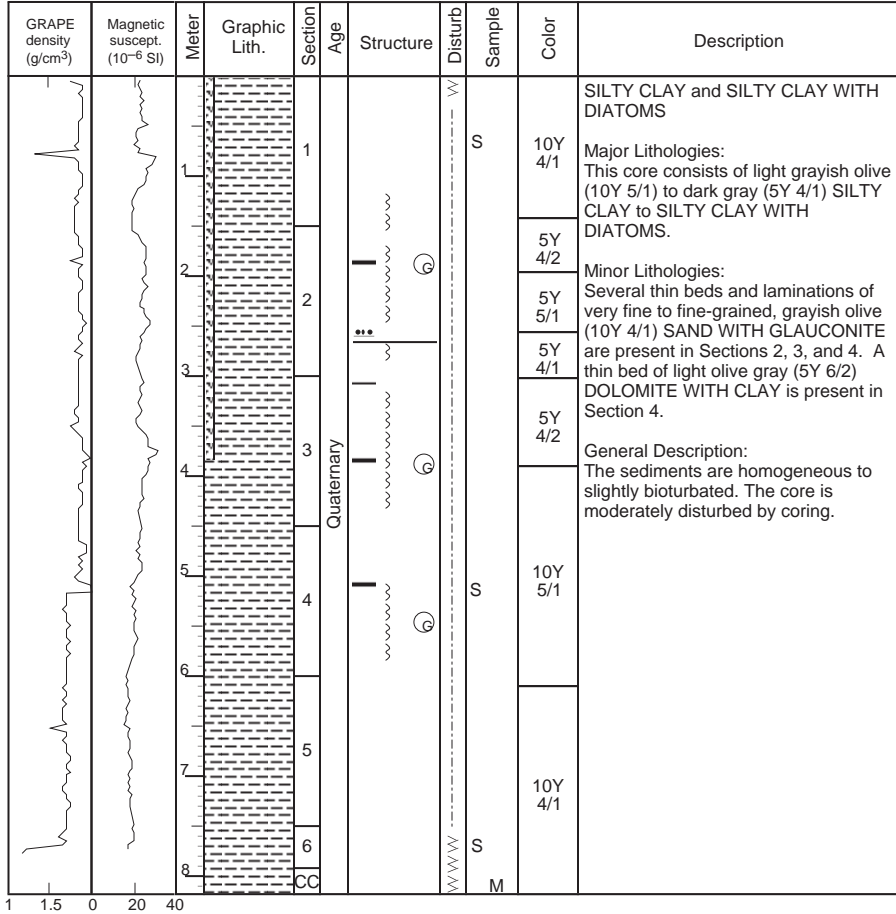


SITE 1019 HOLE D CORE 5H

CORED 32.1 - 41.6 mbsf

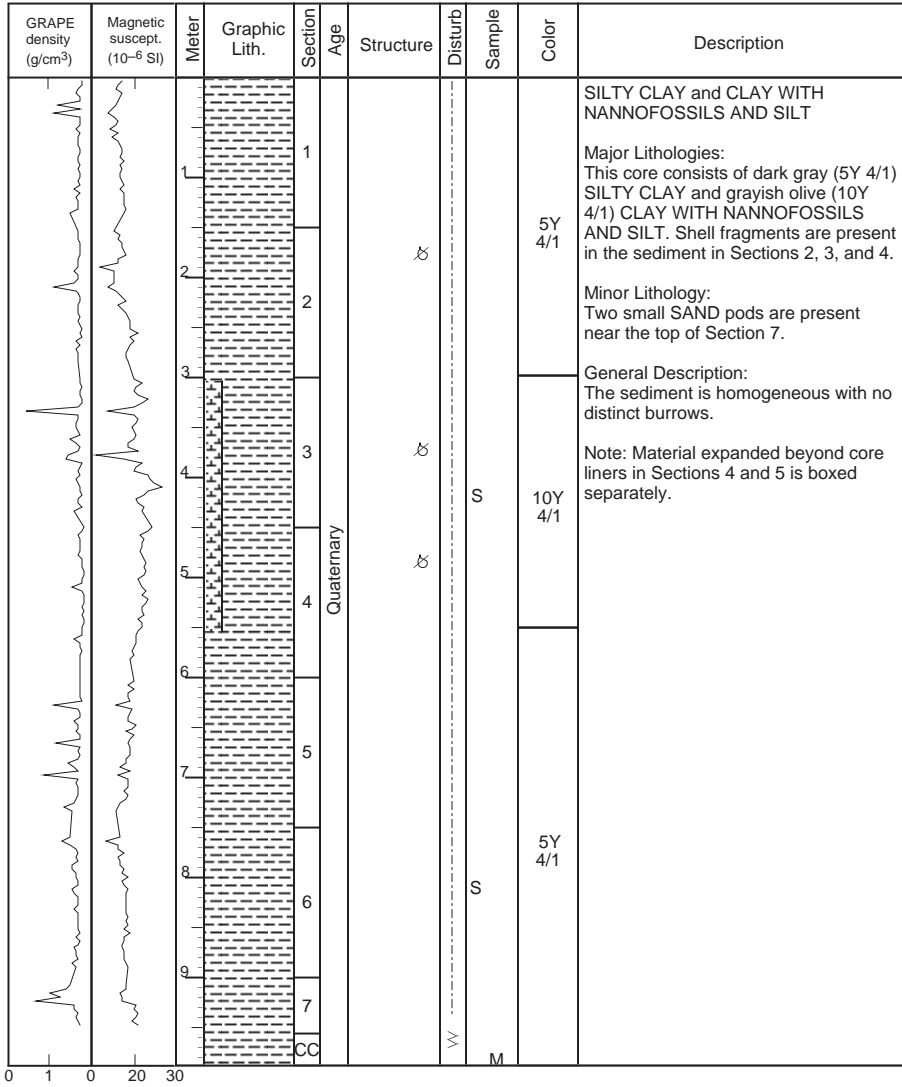


SITE 1019 HOLE D CORE 6H CORED 41.6 - 51.1 mbsf

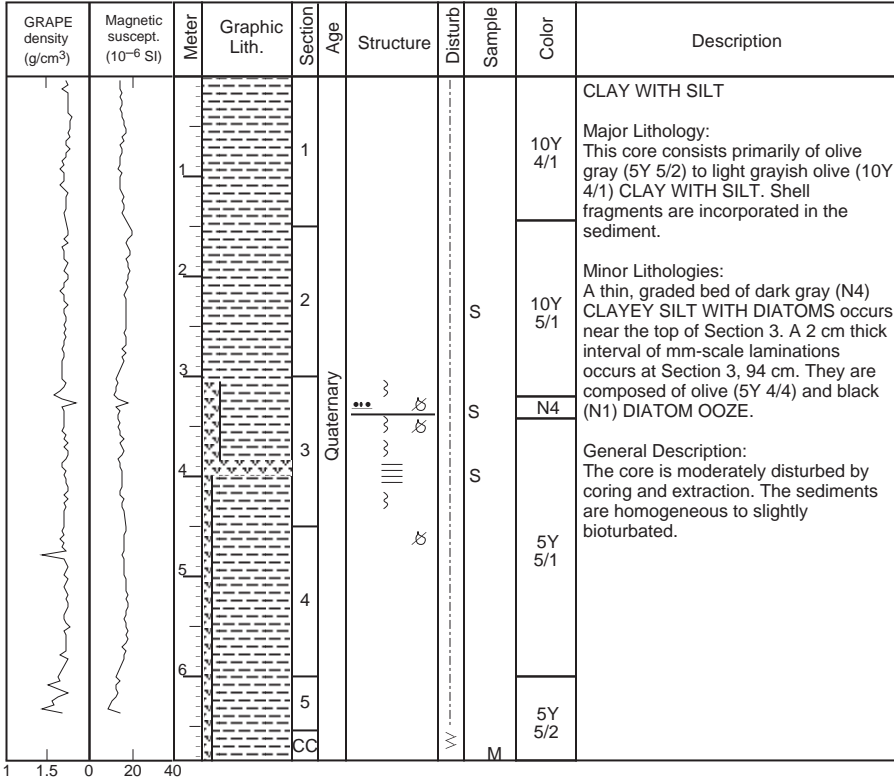


SITE 1019 HOLE D CORE 7H

CORED 51.1 - 60.6 mbsf



SITE 1019 HOLE D CORE 8X CORED 60.6 - 70.1 mbsf



SITE 1019 HOLE D CORE 10X CORED 79.6 - 89.2 mbsf

GRAPE density (g/cm ³)	Magnetic suscept. (10 ⁻⁶ SI)	Meter	Graphic Lith.	Section	Age	Structure	Disturb	Sample	Color	Description
		1		1	Quaternary			M	5Y 4/1	<p>SILTY CLAY WITH DIATOMS</p> <p>Major Lithology: This core consists of massive grayish olive (10Y 4/1) to dark gray (5Y 4/1) SILTY CLAY WITH DIATOMS.</p>
		2		10Y 4/1					<p>General Description: The sediments are entirely homogeneous without any detectable sedimentary features. The core is moderately disturbed.</p>	
		3		CC						

1.4 1.6 15 20 25

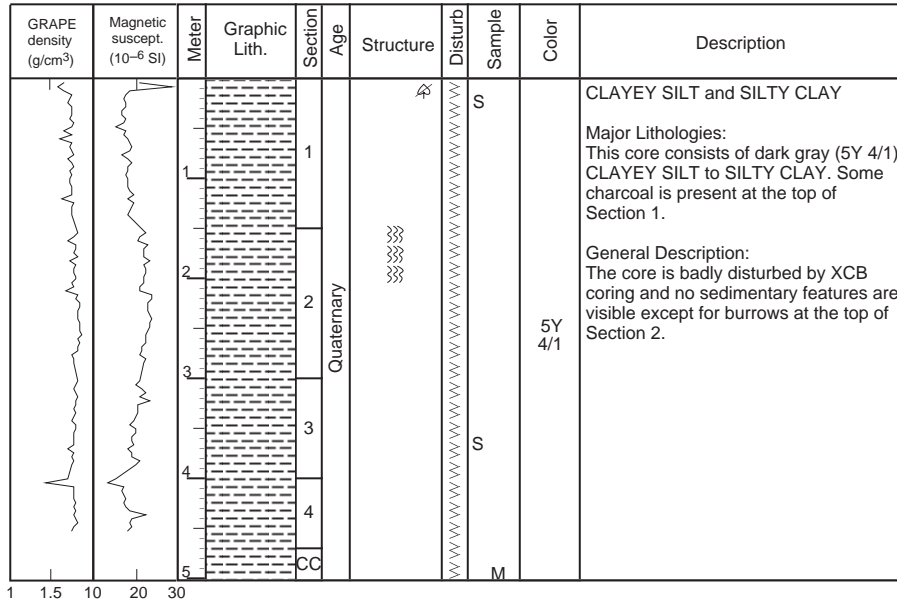
SITE 1019 HOLE D CORE 11X CORED 89.2 - 98.9 mbsf

GRAPE density (g/cm ³)	Magnetic suscept. (10 ⁻⁶ SI)	Meter	Graphic Lith.	Section	Age	Structure	Disturb	Sample	Color	Description
		1		1	Quaternary			M	5Y 4/1	<p>DIATOM SILTY CLAY and CLAY WITH SILT AND DIATOMS</p> <p>Major Lithologies: This core consists of dark gray (5Y 4/1) to grayish olive (10Y 4/1) DIATOM SILTY CLAY to CLAY WITH SILT AND DIATOMS. A few shell fragments are scattered throughout the core.</p>
		2		10Y 4/1					<p>General Description: The sediments are homogeneous with no evidence of distinct burrows. The core is broken and biscuited by XCB coring.</p>	
		3								
		4		CC						

1 1.5 0 20 40

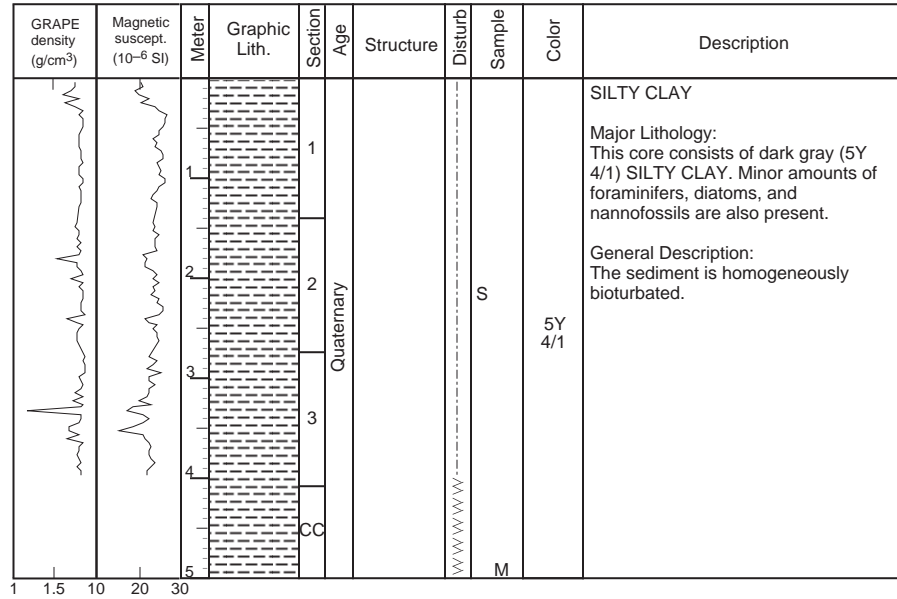
SITE 1019 HOLE D CORE 12X

CORED 98.9 - 108.5 mbsf



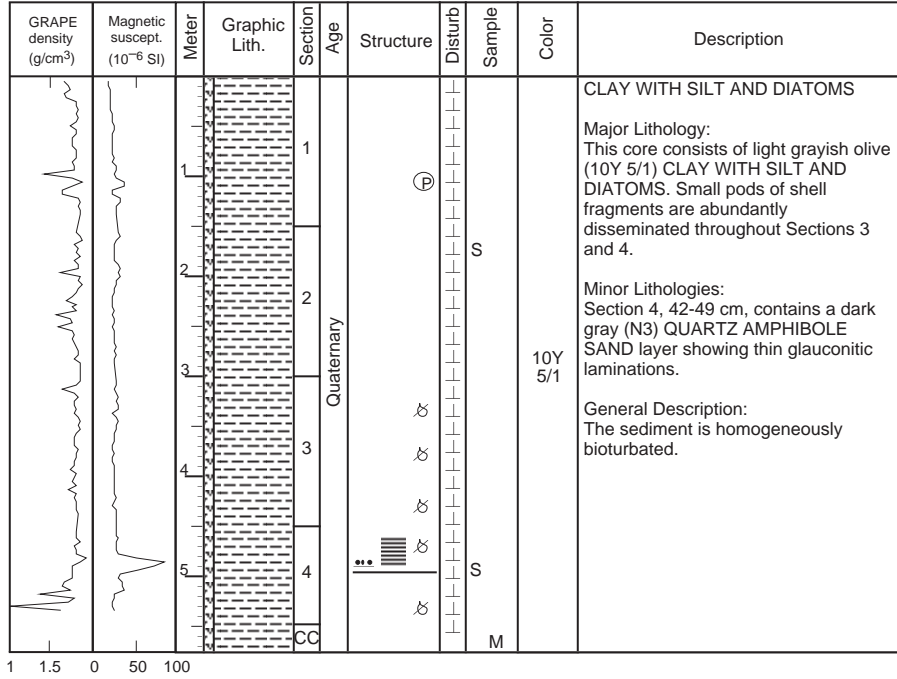
SITE 1019 HOLE D CORE 13X

CORED 108.5 - 118.1 mbsf

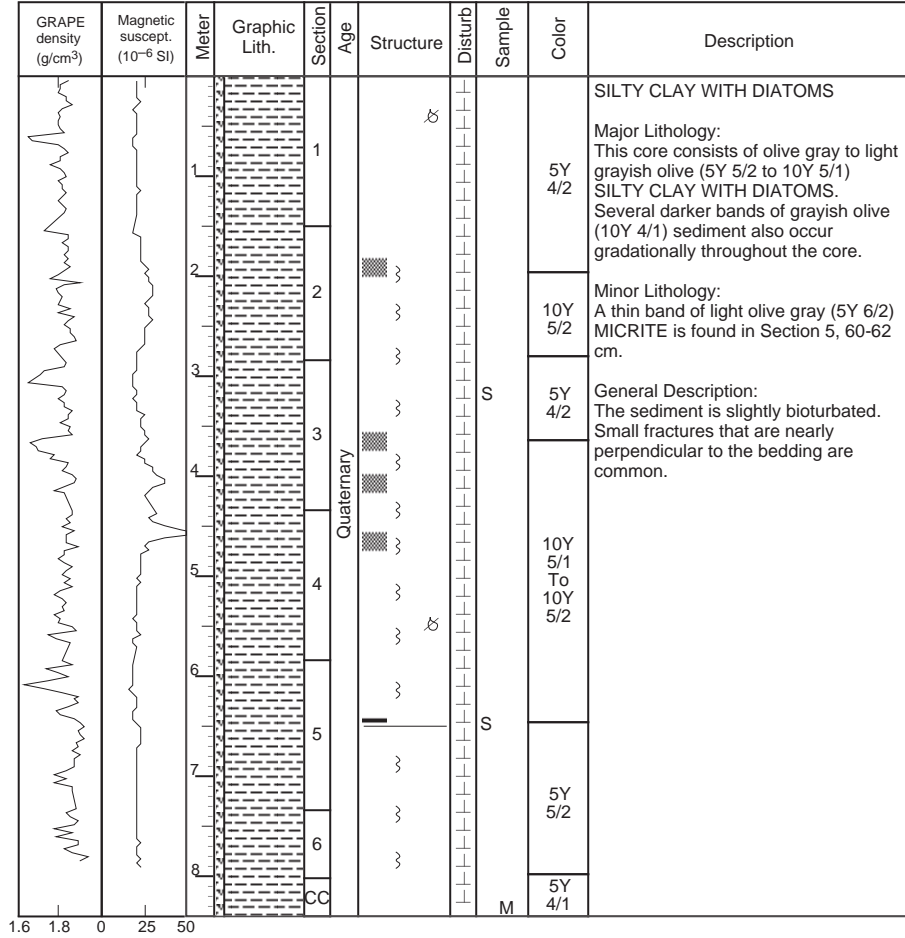


SITE 1019 HOLE D CORE 15X

CORED 127.7 - 137.3 mbsf





SITE 1019 HOLE D CORE 16X CORED 137.3 - 146.9 mbsf



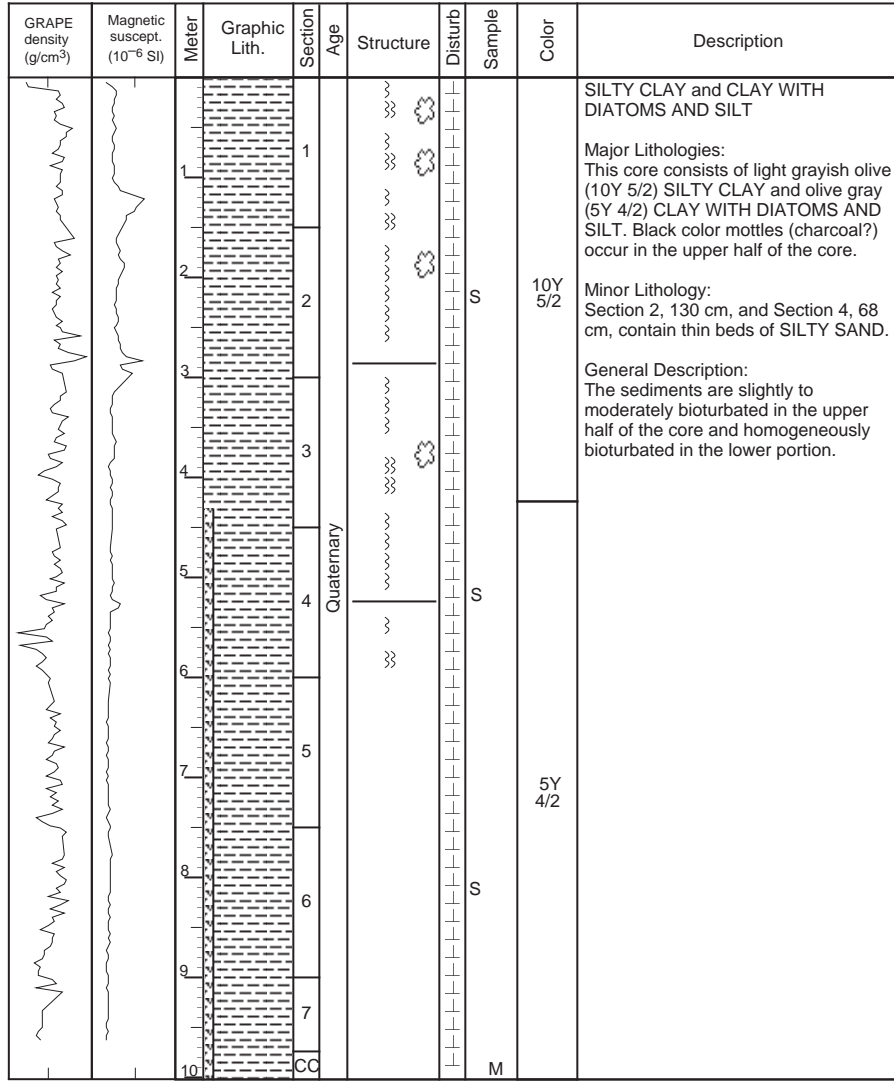
SITE 1019 HOLE D CORE 17X

CORED 146.9 - 156.5 mbsf

Meter	Graphic Lith.	Section	Age	Structure	Disturb	Sample	Color	Description
1		1	Quaternary			S	10Y 4/1	<p>SILTY CLAY WITH DIATOMS</p> <p>Major Lithology: The sediment from this core is grayish olive (10Y 4/1) SILTY CLAY WITH DIATOMS.</p> <p>Note: There is NO STRATIGRAPHIC ORDER to the sediment in this core.</p>
2		2						
3		3						
4		CC						



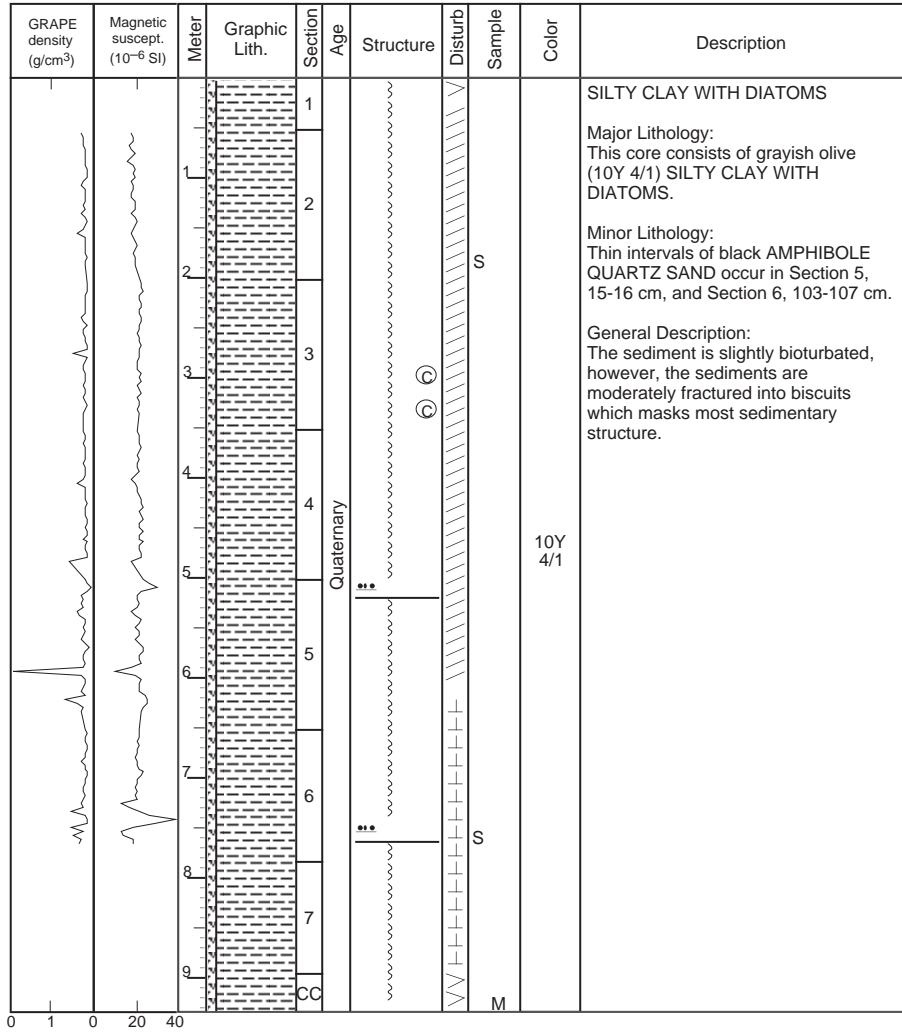
SITE 1019 HOLE D CORE 18X CORED 156.5 - 166.1 mbsf



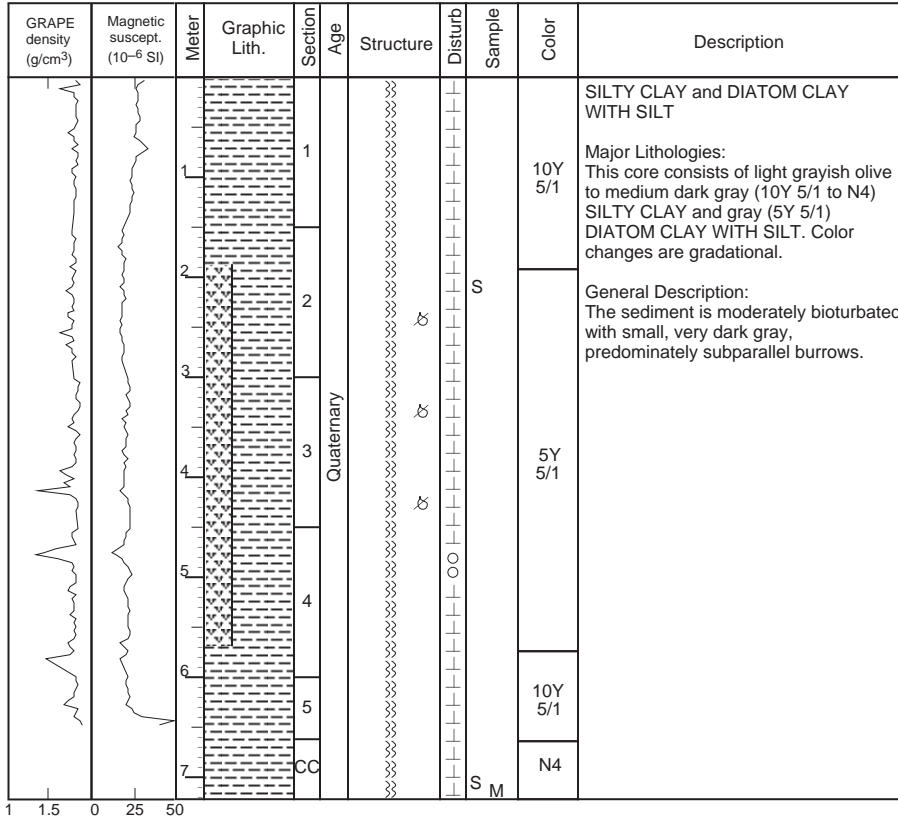
1.6 1.8 0 50 100

SITE 1019 HOLE D CORE 19X

CORED 166.1 - 175.7 mbsf

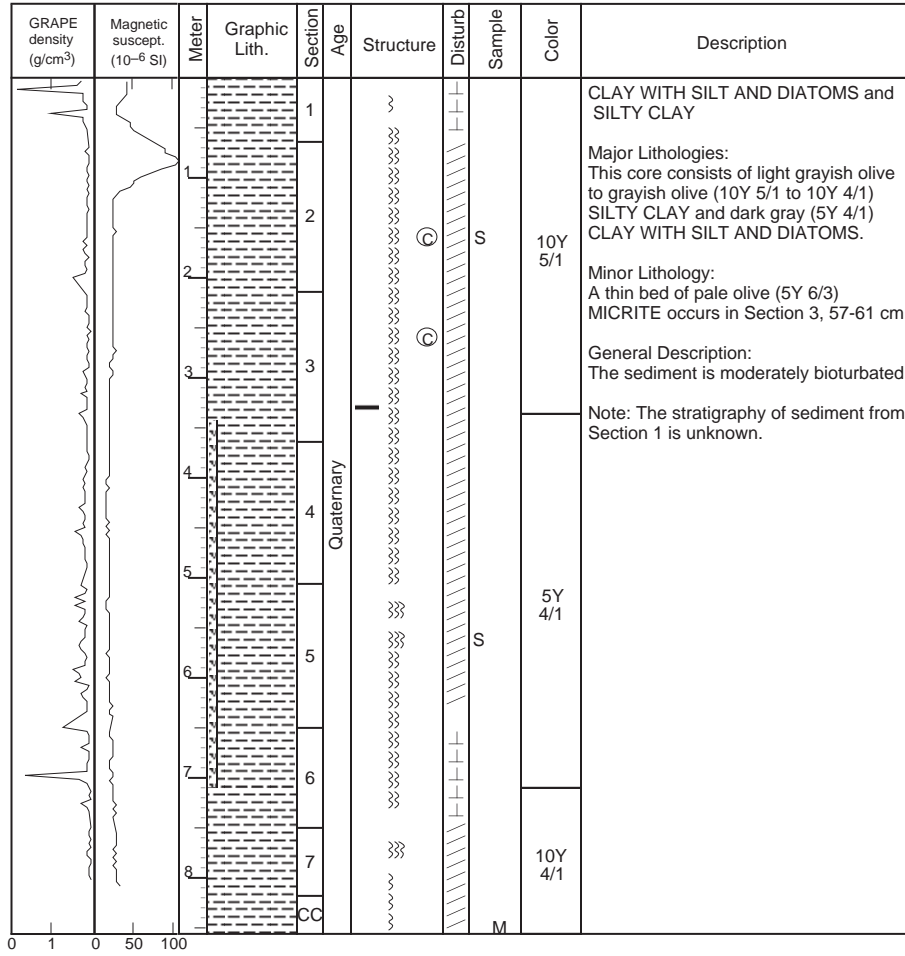


SITE 1019 HOLE D CORE 20X CORED 175.7 - 185.3 mbsf

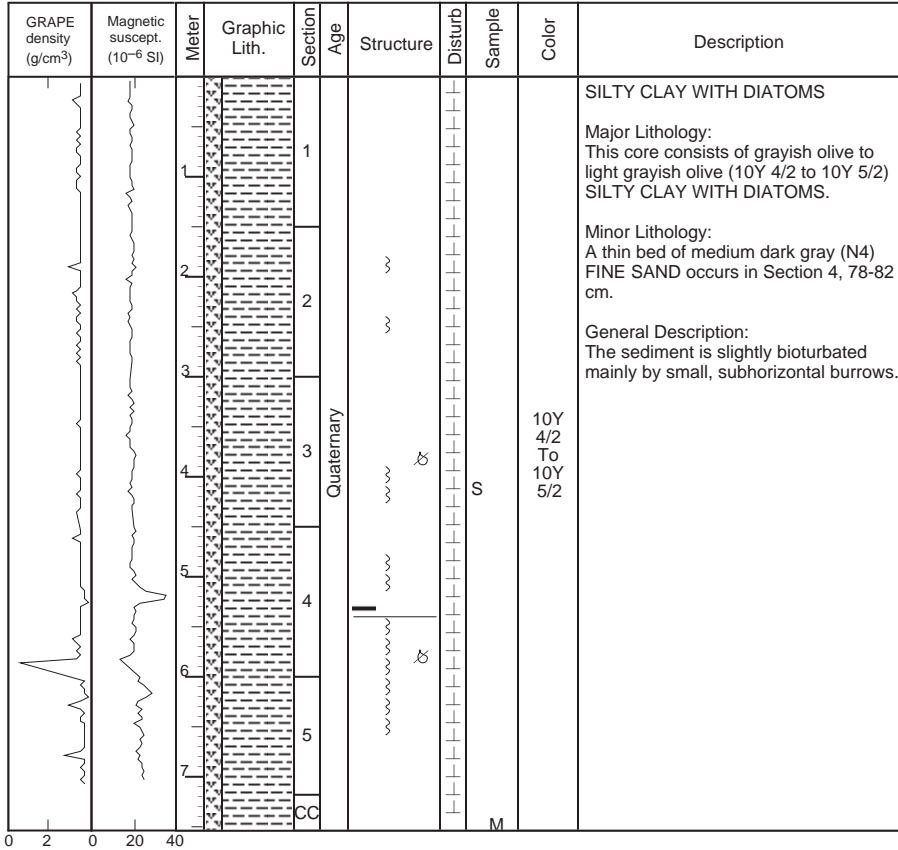


SITE 1019 HOLE D CORE 21X

CORED 185.3 - 194.9 mbsf

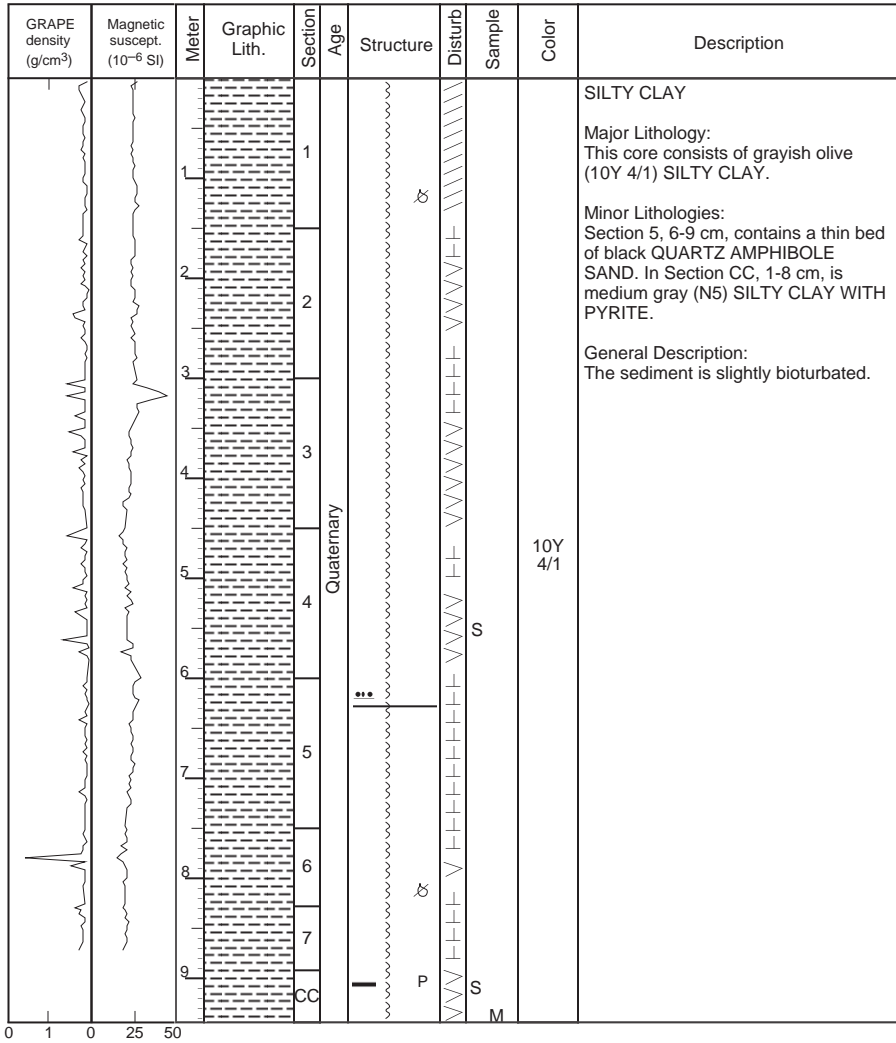


SITE 1019 HOLE D CORE 22X CORED 194.9 - 204.5 mbsf



SITE 1019 HOLE D CORE 23X

CORED 204.5 - 214.2 mbsf

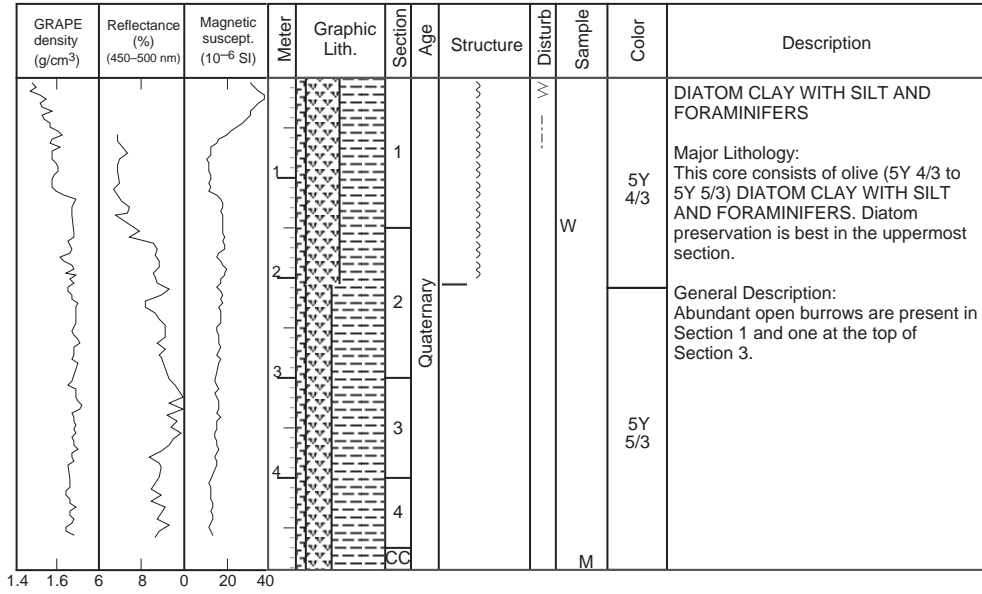


SITE 1019 HOLE D CORE 24X CORED 214.2 - 223.8 mbsf

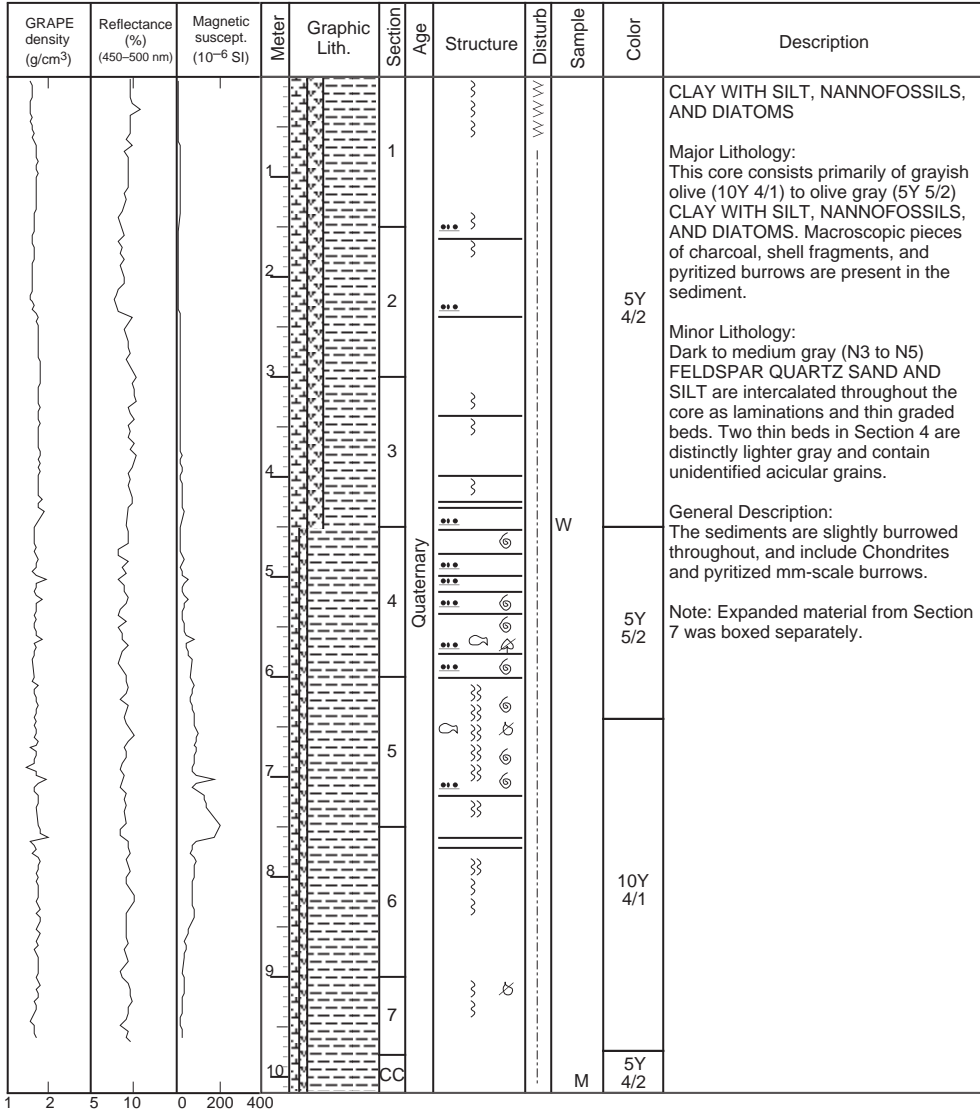
GRAPE density (g/cm ³)	Magnetic suscept. (10 ⁻⁶ SI)	Meter	Graphic Lith.	Section	Age	Structure	Disturb	Sample	Color	Description
		0		1	Quaternary	}	S		5Y 4/1	<p>CLAY WITH DIATOMS AND SILT</p> <p>Major Lithology: This core consists of olive gray (5Y 5/2 to 5Y 4/2) CLAY WITH DIATOMS AND SILT. Small pods of shell fragments occur in Sections 6, and CC.</p> <p>General Description: The sediment is predominantly homogeneous but the core is extensively fractured into biscuits and most structural features are difficult to discern.</p> <p>Note: Material in Sections 1 and 2 is recovered from rig floor. The stratigraphic order or orientation is unknown.</p>
		1		2						
		2		3						
		3		4						
		4		4						
		5		5						
		6		6						
		7		6						
8	7	}	M					5Y 4/2		
	CC									

SITE 1019 HOLE E CORE 1H

CORED 0.0 - 5.0 mbsf

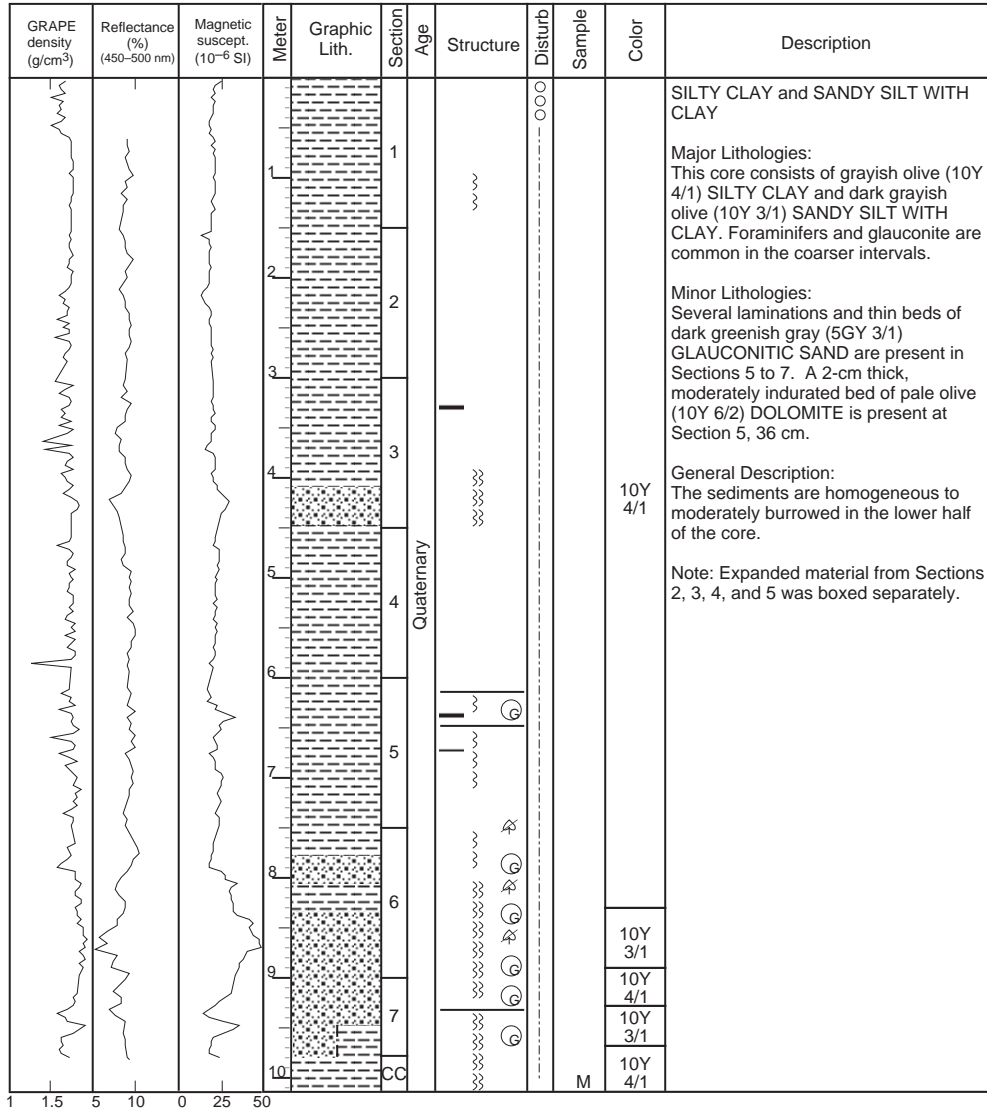


SITE 1019 HOLE E CORE 2H CORED 5.0 - 14.5 mbsf

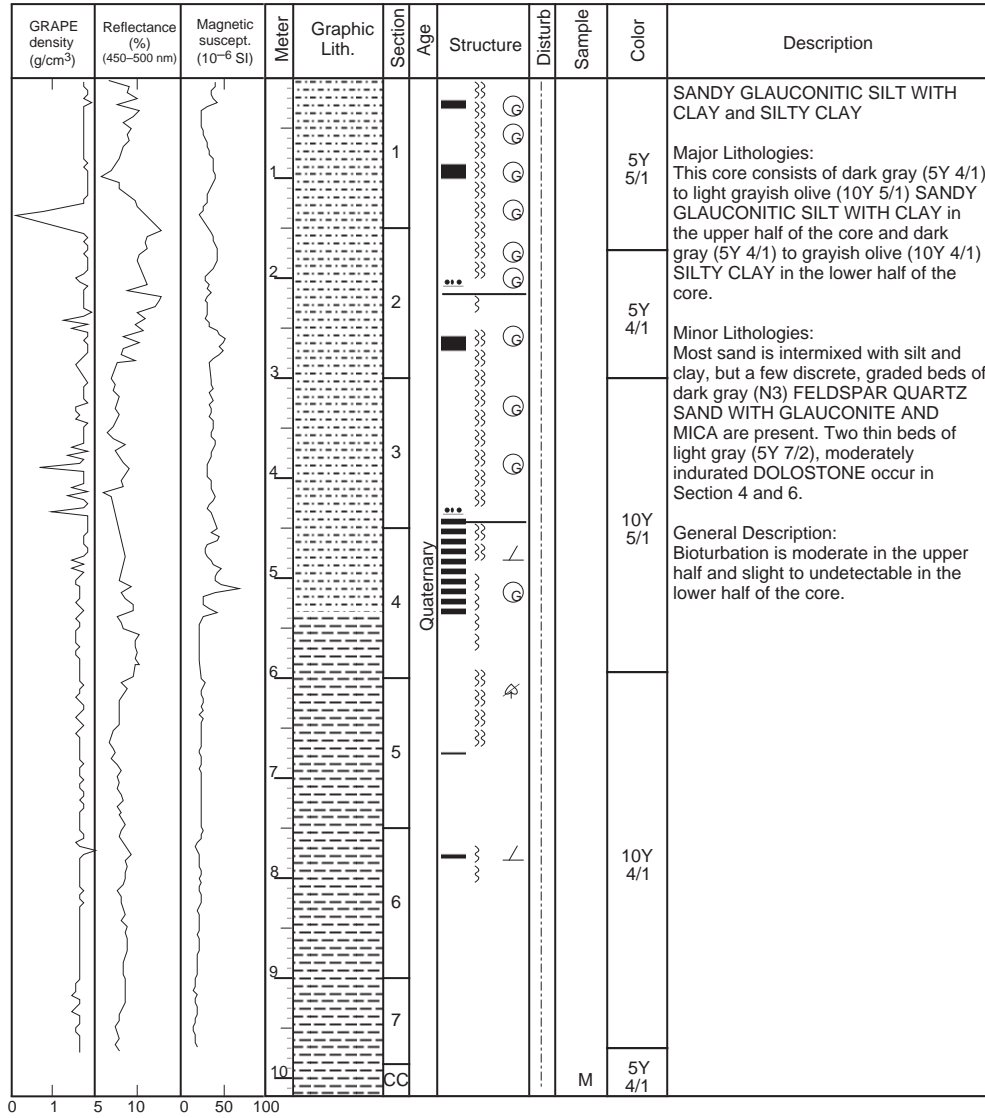


SITE 1019 HOLE E CORE 3H

CORED 14.5 - 24.0 mbsf

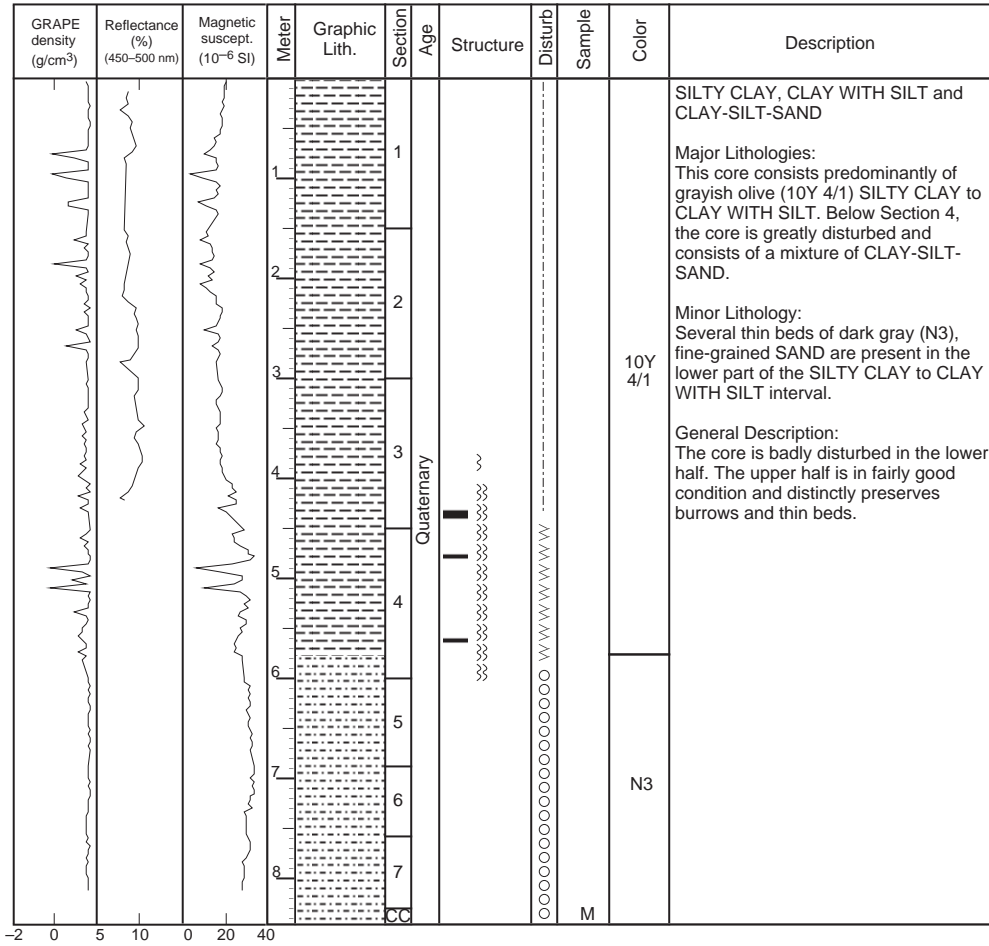


SITE 1019 HOLE E CORE 4H CORED 24.0 - 33.5 mbsf



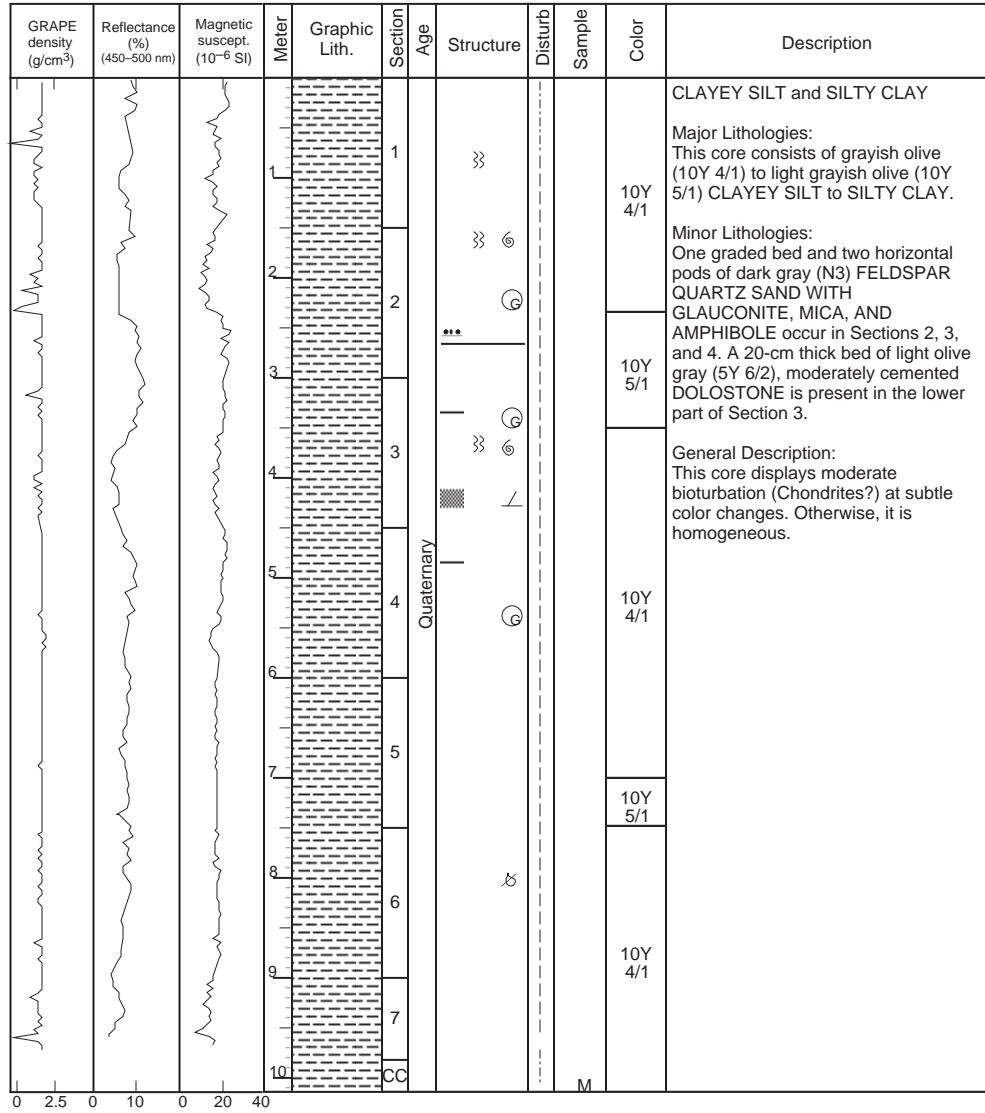
SITE 1019 HOLE E CORE 5H

CORED 33.5 - 43.0 mbsf



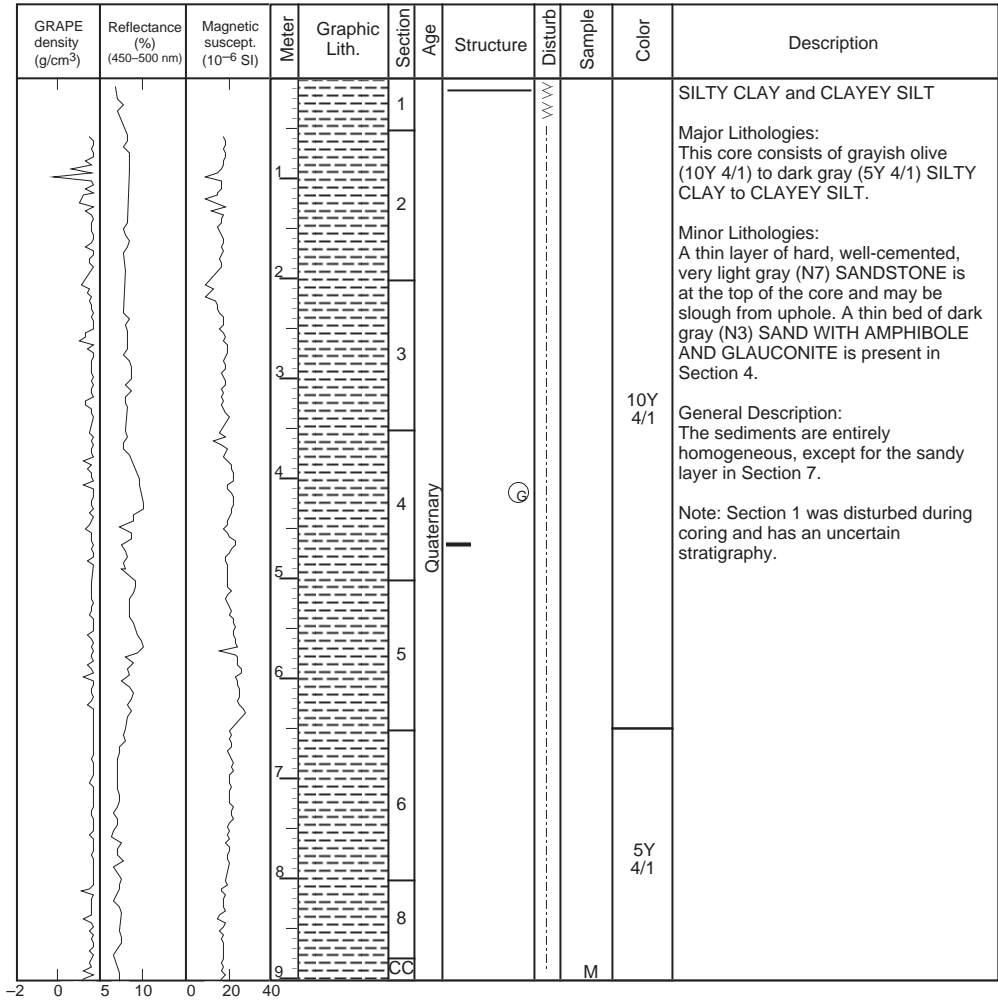
SITE 1019 HOLE E CORE 6H

CORED 43.0 - 52.5 mbsf

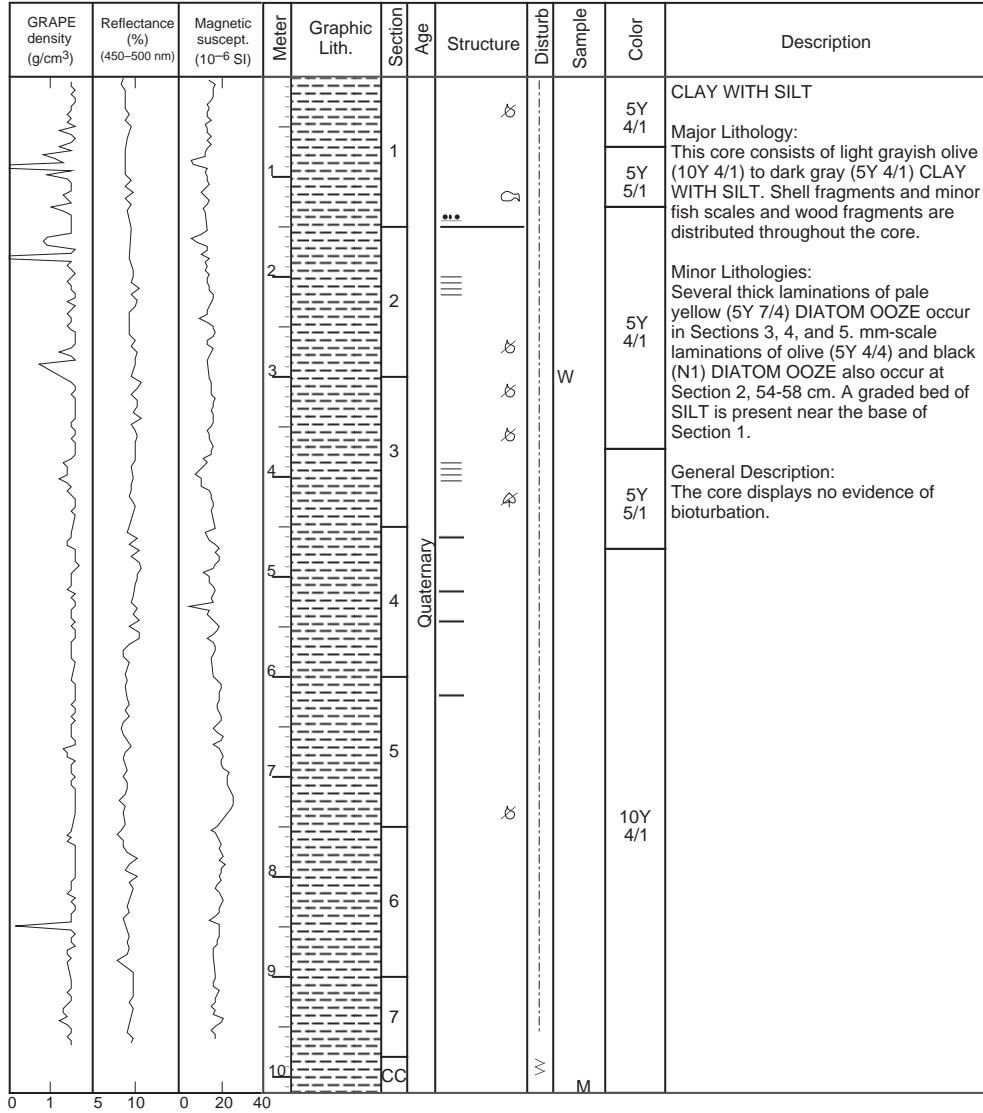


SITE 1019 HOLE E CORE 7H

CORED 52.5 - 62.0 mbsf

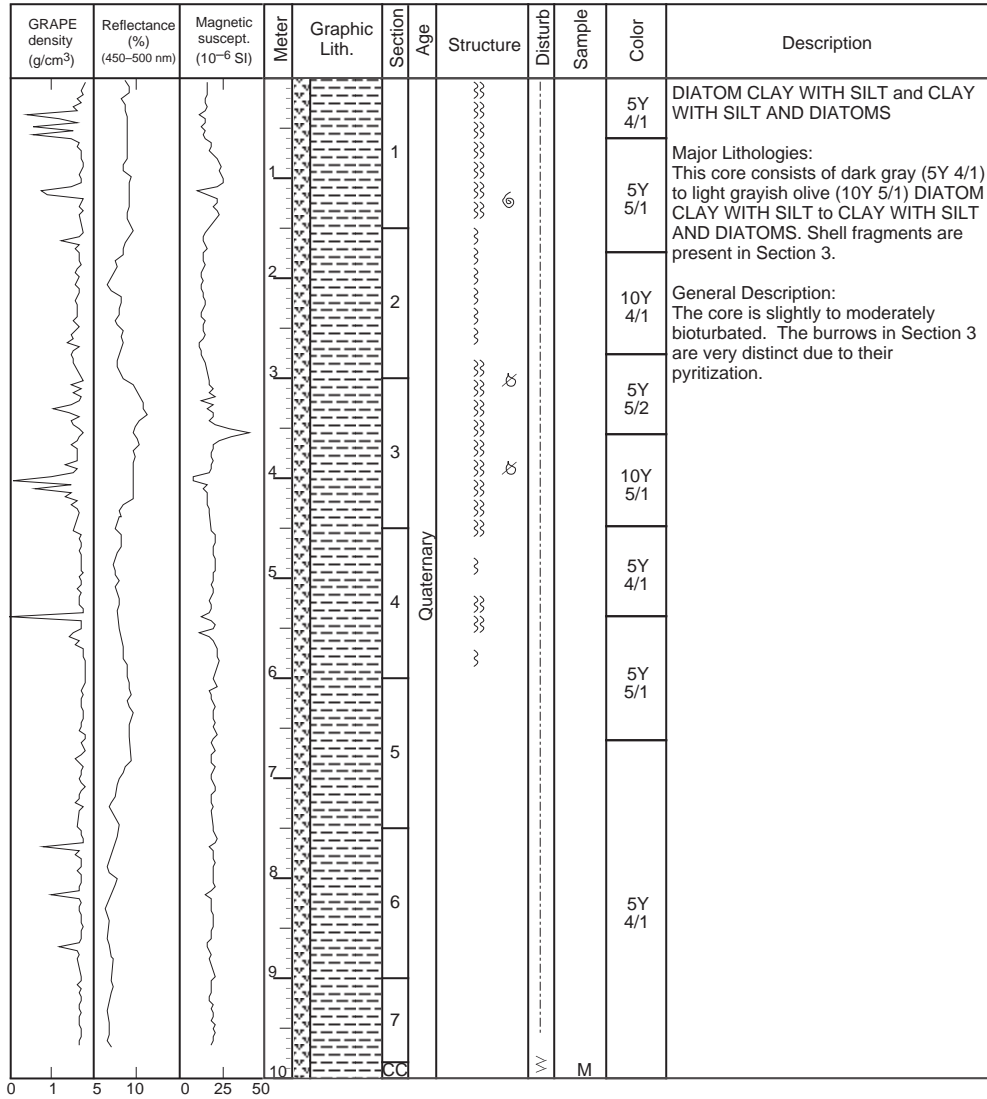


SITE 1019 HOLE E CORE 8H CORED 62.0 - 71.5 mbsf

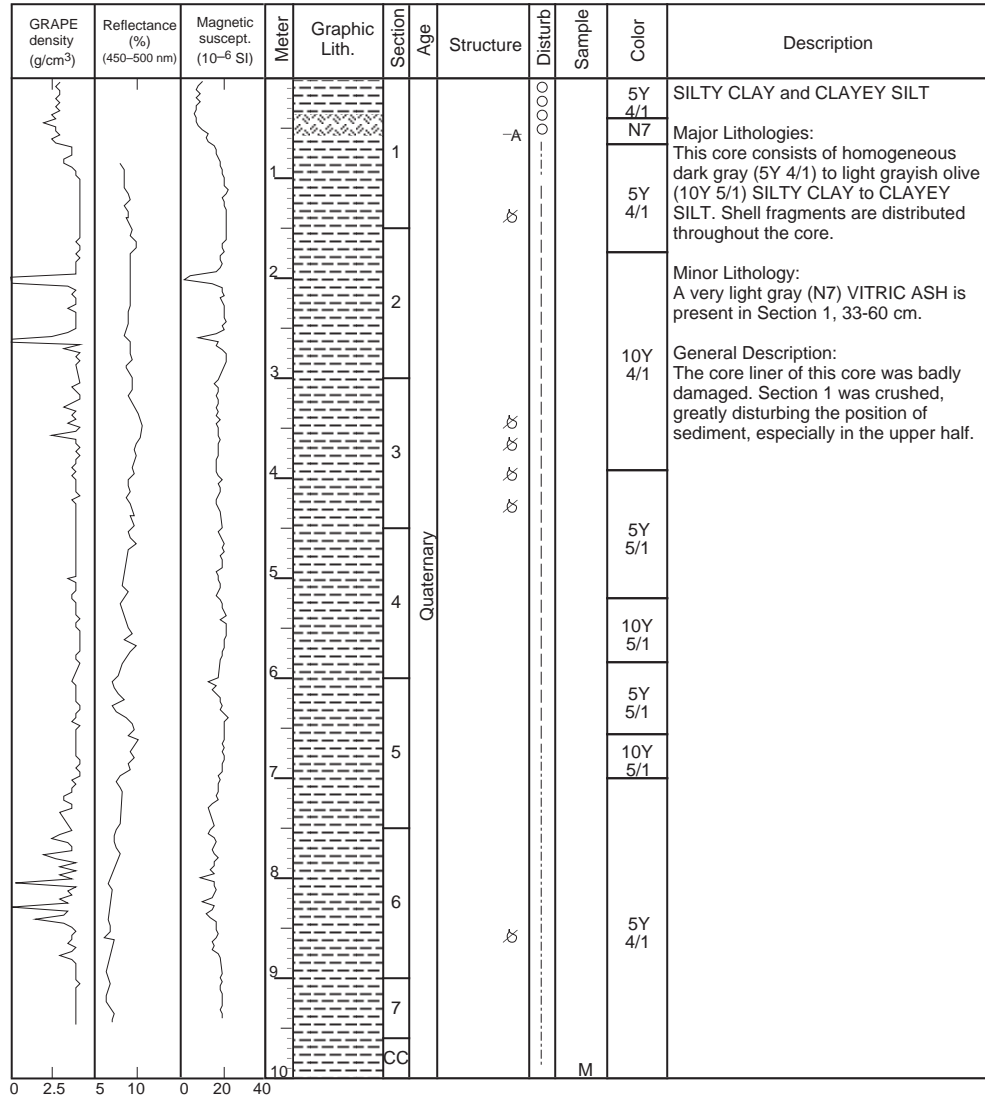


SITE 1019 HOLE E CORE 9H

CORED 71.5 - 81.0 mbsf

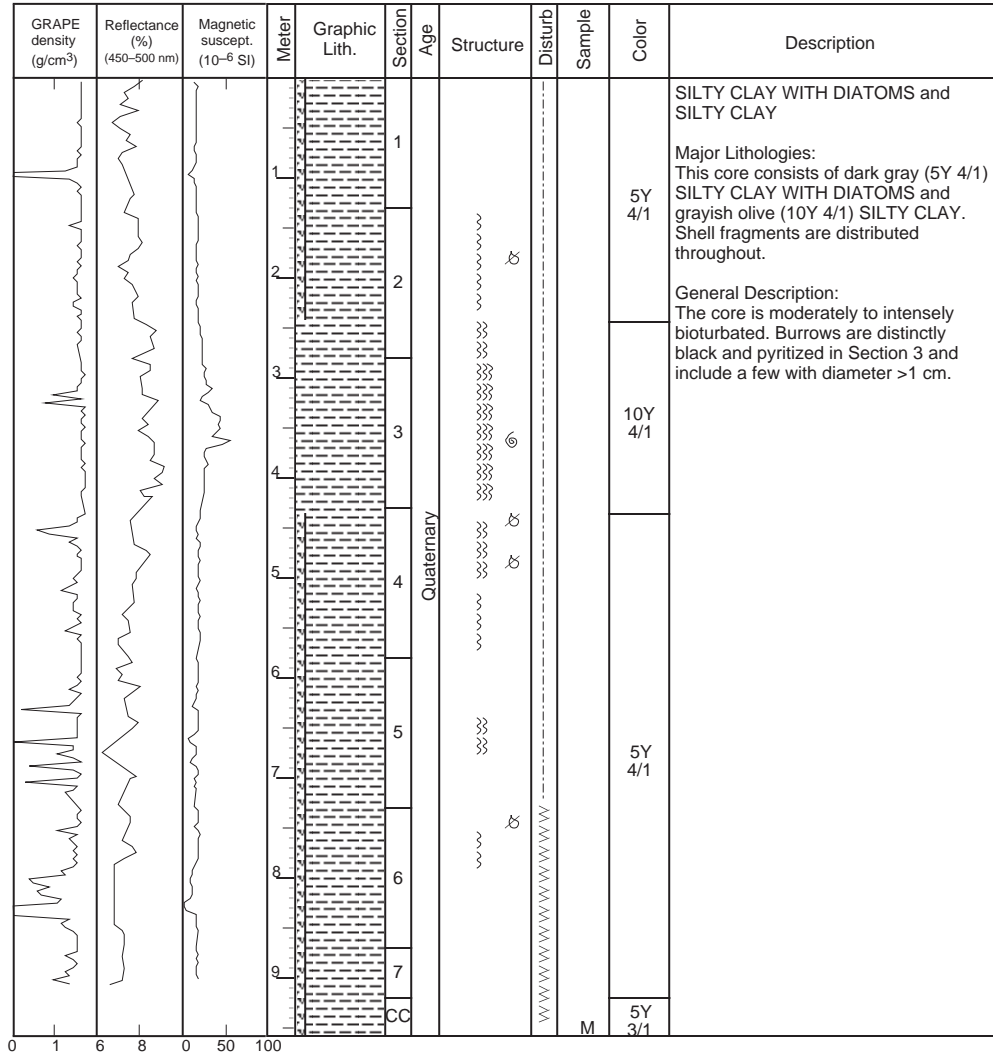


SITE 1019 HOLE E CORE 10H CORED 81.0 - 90.5 mbsf

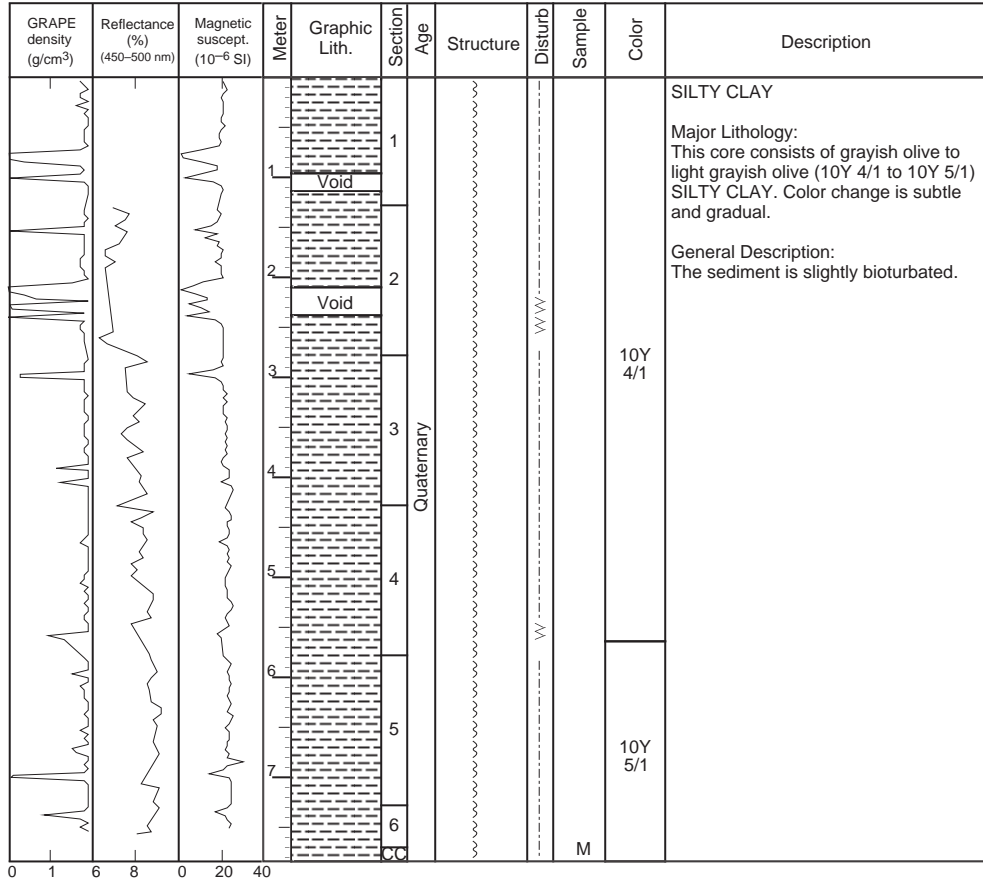


SITE 1019 HOLE E CORE 11H

CORED 90.5 - 100.0 mbsf



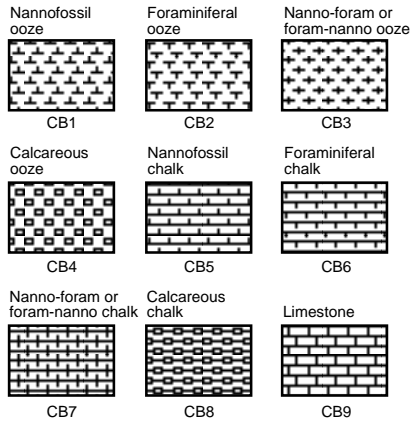
SITE 1019 HOLE E CORE 12H CORED 100.0 - 109.5 mbsf



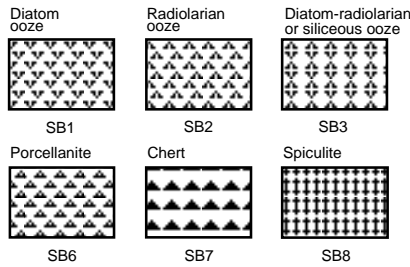
Key to symbols used in the “Graphic Lithology” column on the core description sheets.

Biogenic pelagic sediments

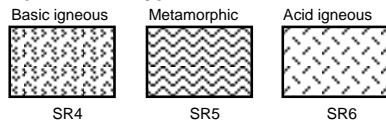
Calcareous



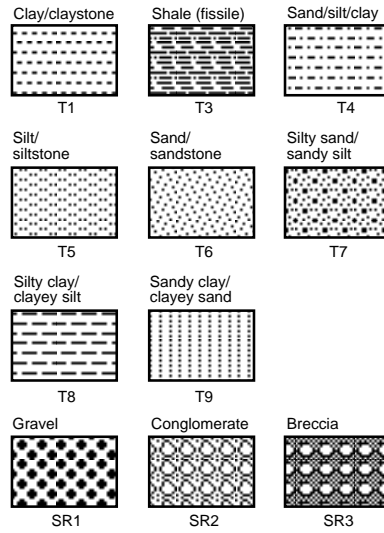
Siliceous



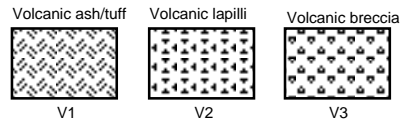
Special rock types



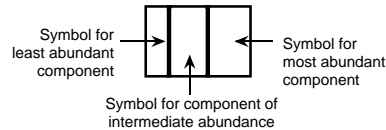
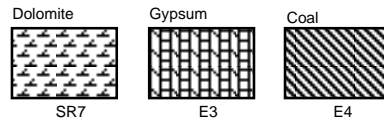
Siliciclastic sediments



Volcaniclastic sediments



Chemical and other sediments



Key to symbols used in the “Structures” column on the core description sheets.

Drilling disturbance symbols	Sedimentary structures cont.	
Soft sediments		
- - - - -	↑ F	Fining-upward sequence
- · - · - · -	↑	Interval over which primary sedimentary structure occur
~ ~ ~ ~ ~		Planar laminae
o o o o o	/ / / / /	Wedge-planar laminae/beds
Hard sediments		
/ / / / /	· · · · ·	Graded bedding (normal)
	· · · · ·	Graded bedding (reversed)
+ + + + +	—	Sharp contact
/ / / / /	- - - - -	Gradational contact
+ + + + +	~ ~ ~ ~ ~	Scoured, sharp contact
/ / / / /	~ ~ ~ ~ ~	Scoured contact with graded bed
X X X X X	■	Thick color bands (sharp contact)
	■	Thick color bands (gradational contact)
	■	Medium color bands (sharp contact)
	■	Medium color bands (gradational contact)
	■	Thin color bands (sharp contact)
	■	Thin color bands (gradational contact)
		Laminations (mm scale)
	■	Individual thick color band
	■	Individual medium color band
	■	Individual thin color band
	—	Individual lamination
	~ ~ ~ ~ ~	Wavy lamination
	/ / / / /	Cross laminae
	/ / / / /	Cross stratification
	/ / / / /	Cross bedding
	~ ~ ~ ~ ~	Convoluted/contorted bedding
	~ ~ ~ ~ ~	Flaser bedding
	△	Graded interval, normal
	<	Veins
	/ / / / /	Water escape structure
	∩	Scour
	◇	Isolated pebbles/cobbles
	◆	Isolated mud clasts
	~ ~ ~ ~ ~	Slump blocks or slump folds
	~ ~ ~ ~ ~	Contorted slump
	X X X X X	Probable compaction fracture
	/ / / / /	Microfault (normal)
	/ / / / /	Microfault (thrust)
	/ / / / /	Macrofault
	/ / / / /	Fracture
	X X X X X	Totally fractured
	~ ~ ~ ~ ~	Vein structures
	~ ~ ~ ~ ~	Color mottles
	~ ~ ~ ~ ~	Dolomite nodule/concretion
	D	Disseminated dolomite
	(P)	Pyrite nodule/concretion
	P	Disseminated pyrite
	(G)	Glauconite
	●	Concretions/nodules
	(Ba)	Barite nodule/concretion
	Ba	Disseminated barite
	(Ca)	Calcite nodule/concretion
	(C)	Carbonate nodule/concretion
	(Ch)	Chert nodule/concretion
	A●	Ash/pumice pods
	-A	Ash layer

Drilling disturbance symbols	
- - - - -	Slightly disturbed
- · - · - · -	Moderately disturbed
~ ~ ~ ~ ~	Highly disturbed
o o o o o	Soupy
Hard sediments	
/ / / / /	Slightly fractured
+ + + + +	Moderately fractured
/ / / / /	Highly fragmented
X X X X X	Drilling breccia

Sedimentary structures	
>	Burrows, rare (<30% surface area)
>>	Burrows, common (30%–60% surface area)
>>>	Burrows, abundant (>60% surface area)
>>>	Discrete <i>Zoophycos</i> trace fossil
⊗	Discrete <i>Chondrites</i> trace fossil
⊗	<i>Sagarites</i> sponge
⊗	Gastropods
⊗	Other bivalves
⊗	Shell fragments
⊗	Wood fragments
⊗	Fish debris