

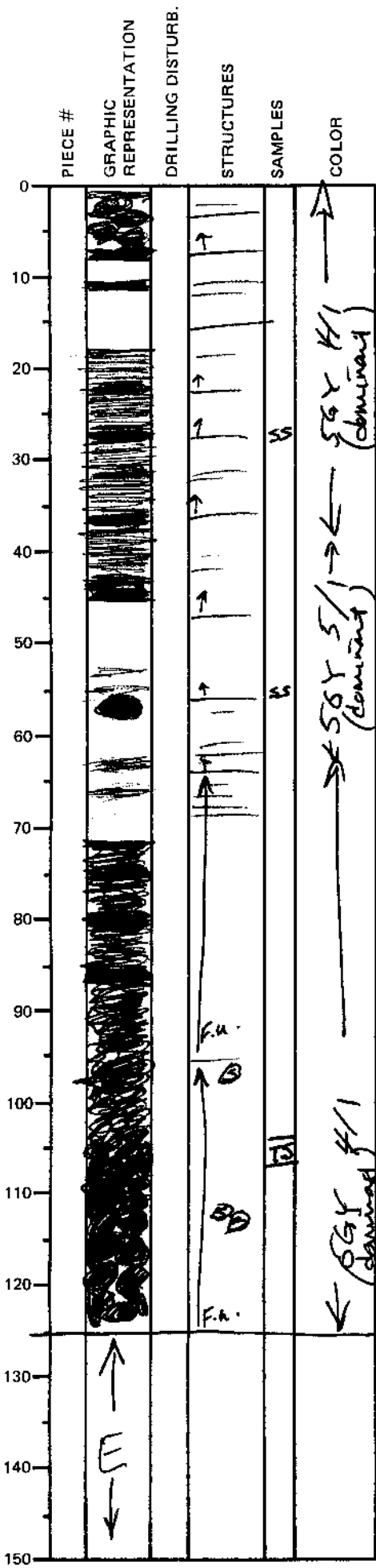
LEG	SUB	SITE	HOLE	CORE	TYPE	SEC
169		1035A		01		05

ODP
VISUAL CORE DESCRIPTION

SEDIMENTS / SEDIMENTARY ROCKS

OBSERVER
CAR/AB
WCS

SECTION DESCRIPTION



Sulfide breccia with coarse
pyrite crystals
Dominant Lithology

fine- to medium-grained sulfide-
~~rich sand & silt~~ SEDIMENTARY BRECCIA
sulfide clasts range from fine sd to 2cm size.

(this sand is similar to thinner
sand lams in sect. 1-4, but
coarser & thicker)

CLAYEY FINE-GRAINED SULFIDE-RICH
SAND. unit become more clay-rich
up-section

breccia
sulfide-~~rich~~ "debris flow" w/ slight
fining-upward SULFIDE-RICH SEDIMENTARY
BRECCIA
Dark greenish-gray