

LEG	SUB	SITE	HOLE	CORE	TYPE	SEC
169		1035A		03H		02

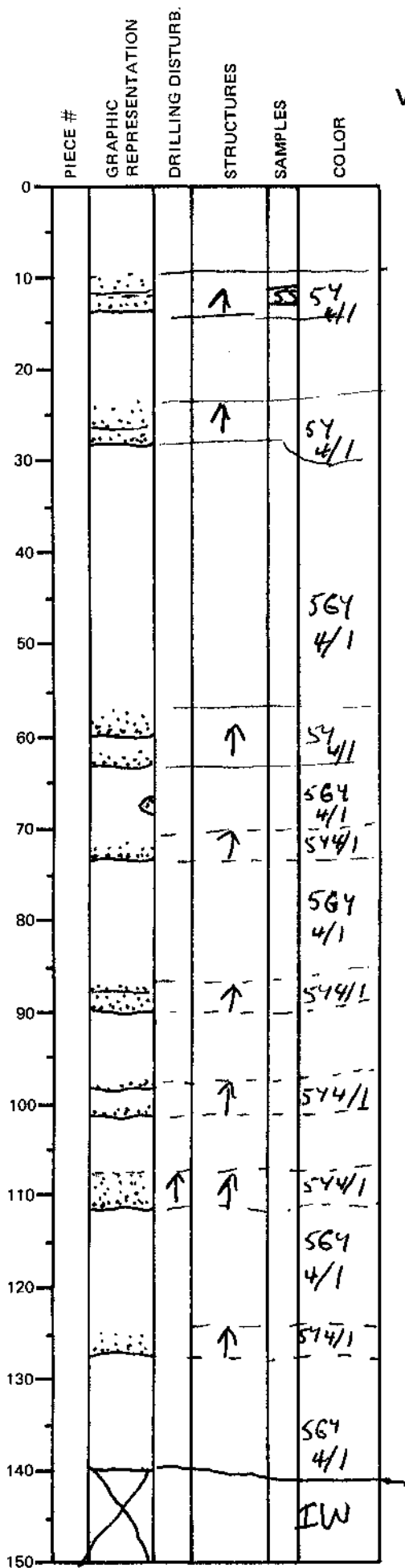
ODP  
VISUAL CORE DESCRIPTION

SEDIMENTS / SEDIMENTARY ROCKS

OBSERVER

SECTION DESCRIPTION

UAG



Weakly indurated interbedded blue green hemipelagic silty-clay and gray turbidite sand and silt. Turbiditic units display sharp, commonly irregular to basal contacts, and fine upward into silty clay. Basal contacts display scoars due to the erosion by turbidites.