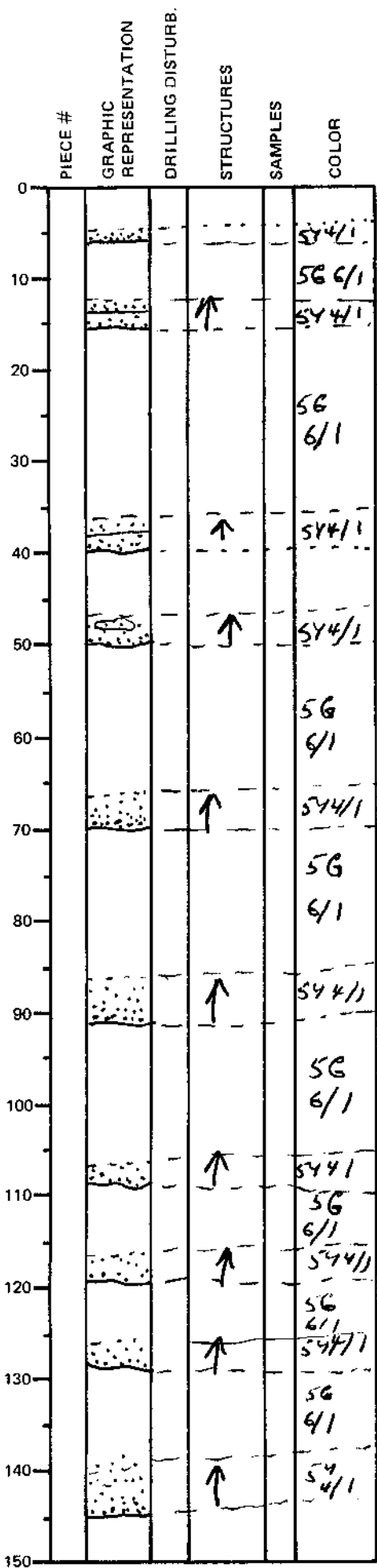


LEG	SUB	SITE	HOLE	CORE	TYPE	SEC
169		1035A		03	H03	
OBSERVER						
WDG						

ODP
VISUAL CORE DESCRIPTION

SEDIMENTS / SEDIMENTARY ROCKS

SECTION DESCRIPTION



Blue-green hemipelagic silty clay, weakly indurated, interbedded with med. qtz. turbiditic sand and silt. Turbidites display sharp, sometimes scoured bases that fine upward into silty clay. Gradational tops. Patches of green Mg-smectite due to hydrothermal alteration.

Fe-monosulfides (black)