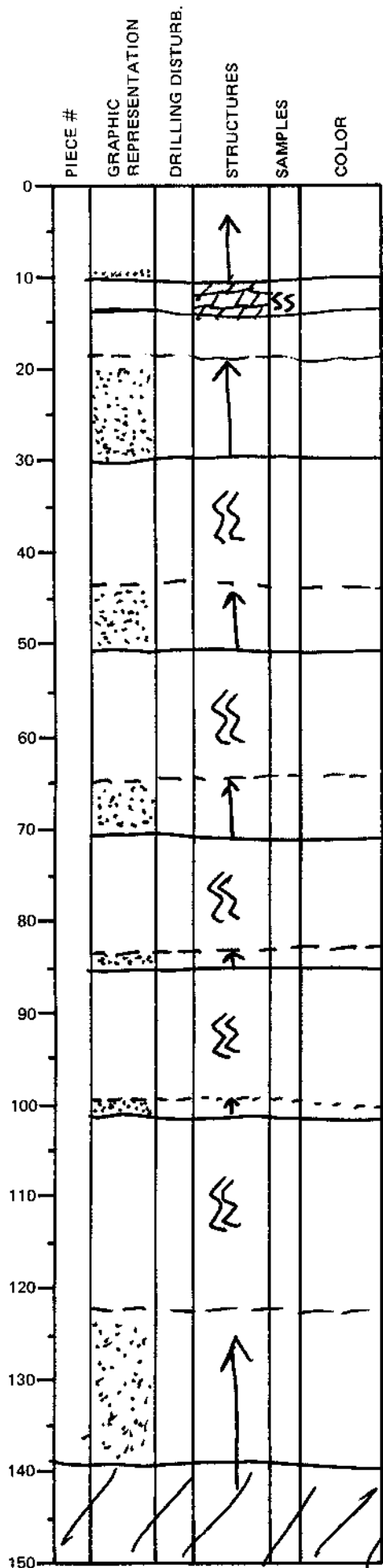


LEG	SUB	SITE	HOLE	CORE	TYPE	SEC
169		1035A			3H	4
OBSERVER						
PAB						

ODP
VISUAL CORE DESCRIPTION

SEDIMENTS / SEDIMENTARY ROCKS

SECTION DESCRIPTION



Dolosilt layer 10-14 cm

greenish gray (SGY 5/1)
bioturbated mud
interbedded with dk. gray (SGY 4/1)
silty fine sand turbidites
sharp basal contacts grading
upward into hemipelagic
silt muds
- some bottom contacts are scoured

small white flecks of anhydrite(?)
scattered throughout core

IW