

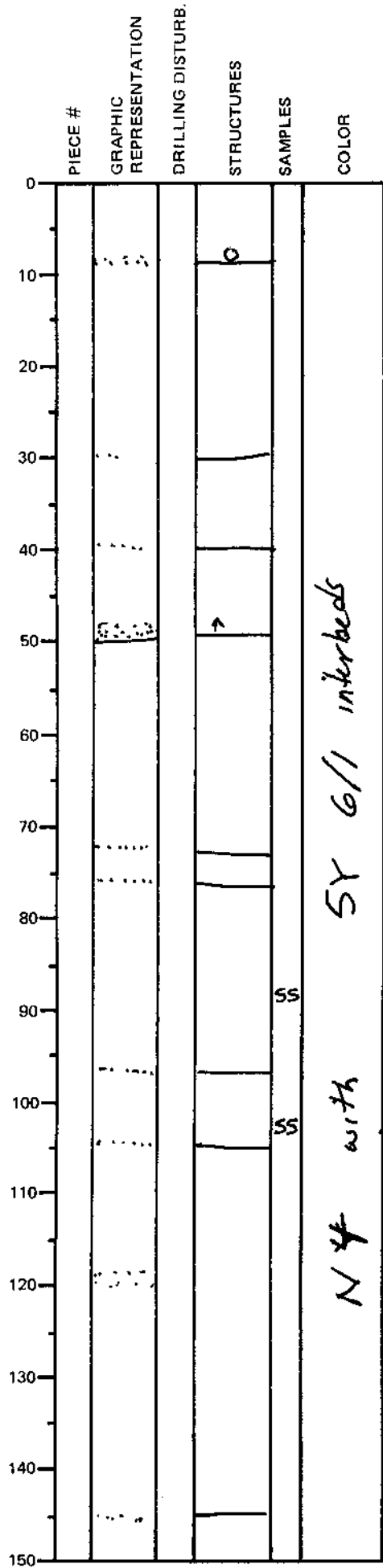
LEG	SUB	SITE	HOLE	CORE	TYPE	SEC
169		1035A		04	H05	

ODP
VISUAL CORE DESCRIPTION

SEDIMENTS / SEDIMENTARY ROCKS

SECTION DESCRIPTION

OBSERVER
CAR



N4 with SS 6/1 interbeds

Dark gray (N4) SILTY CLAY
with local interbeds of
~~dark~~ gray (5Y 6/1) FINE-
GRAINED SAND & SILTY SAND.

SANDS & SILTY SANDS have
sharp bases and range in
thickness from 0.5 to 2.0 cm.

Rare nodules (carbonate & sulfide)
replace (or nucleate around) burrows.

← Calcite-rich/gtz-rich white laminations
cemented gtz. turbidite?