

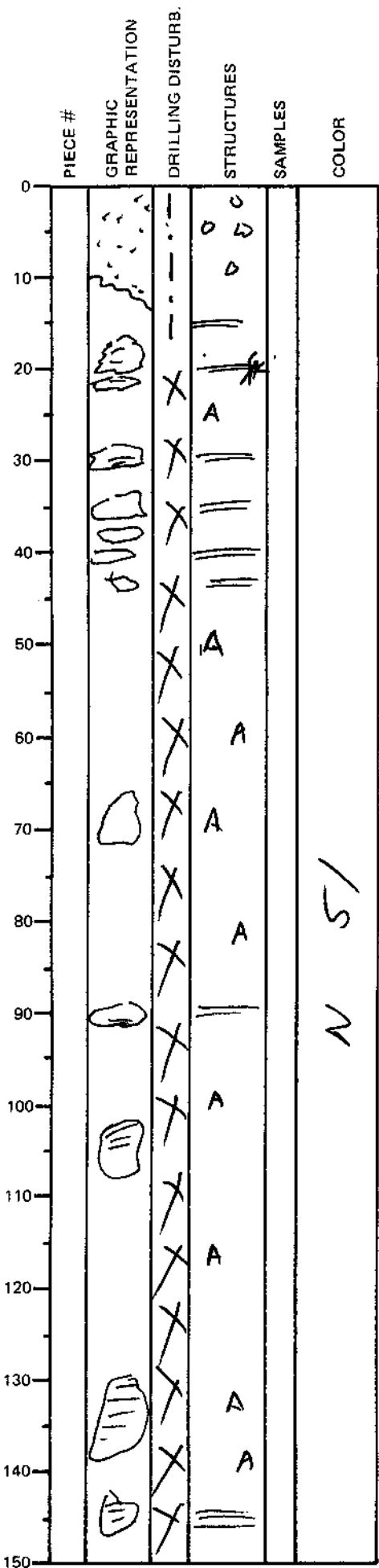
| LEG | SUB | SITE  | HOLE | CORE | TYPE | SEC |
|-----|-----|-------|------|------|------|-----|
| 169 |     | 1035A |      | 13X  | 01   |     |

ODP  
VISUAL CORE DESCRIPTION

SEDIMENTS / SEDIMENTARY ROCKS

|          |
|----------|
| OBSERVER |
| CAR      |

SECTION DESCRIPTION



0-10 cm: pyrite-rich sand, gray (N 51) with brassy pyrite

10 cm-base: gray (N 51) drilling biscuits of very fine grained sand & silt surrounded by gray (N 51) silty clay

Sand & silt are locally parallel laminated

disseminated anhydrite is present throughout the silty clay; a few anhydrite molds are also present.

Anhydrite vein at 20-23 cm