

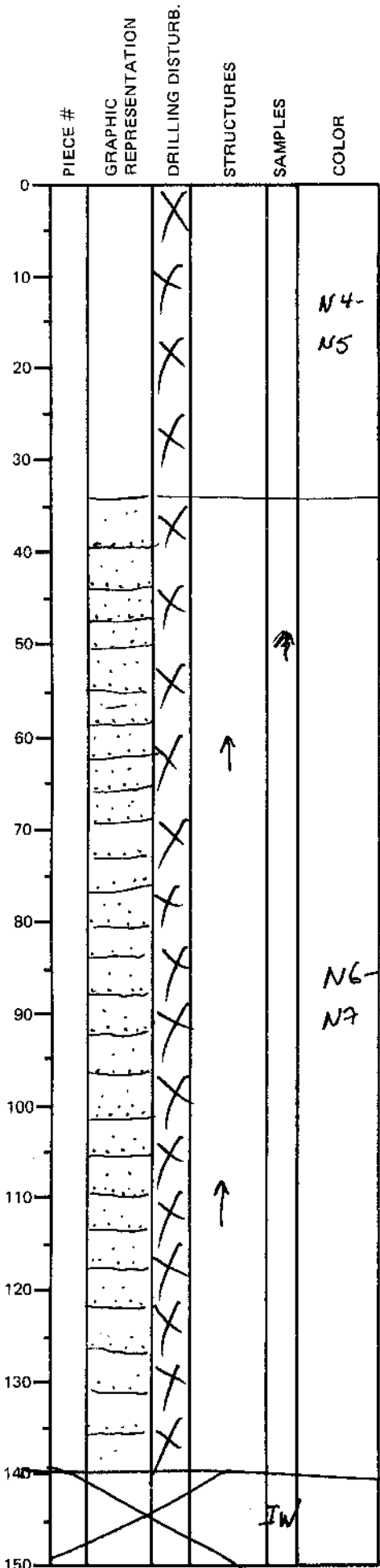
LEG	SUB	SITE	HOLE	CORE	TYPE	SEC
169		1035A		15X	05	

ODP
VISUAL CORE DESCRIPTION

SEDIMENTS / SEDIMENTARY ROCKS

OBSERVER
CAR

SECTION DESCRIPTION



Dark gy moderately indurated hemipelagic claystone/mudstone with authigenic x'tals of clear anhydrite.

Pale to medium gy. interbedded sandstone and siltstone. This unit is parallel and cross-laminated. Coarser grained sandstone has a speckled appearance due to the presence of Ferro-magnesium minerals. Pyrite as cubes occur throughout this unit.

N6-N7 becomes sandier in this interval