

LEG	SUB	SITE	HOLE	CORE	TYPE	SEC
169		1035A		19X01		

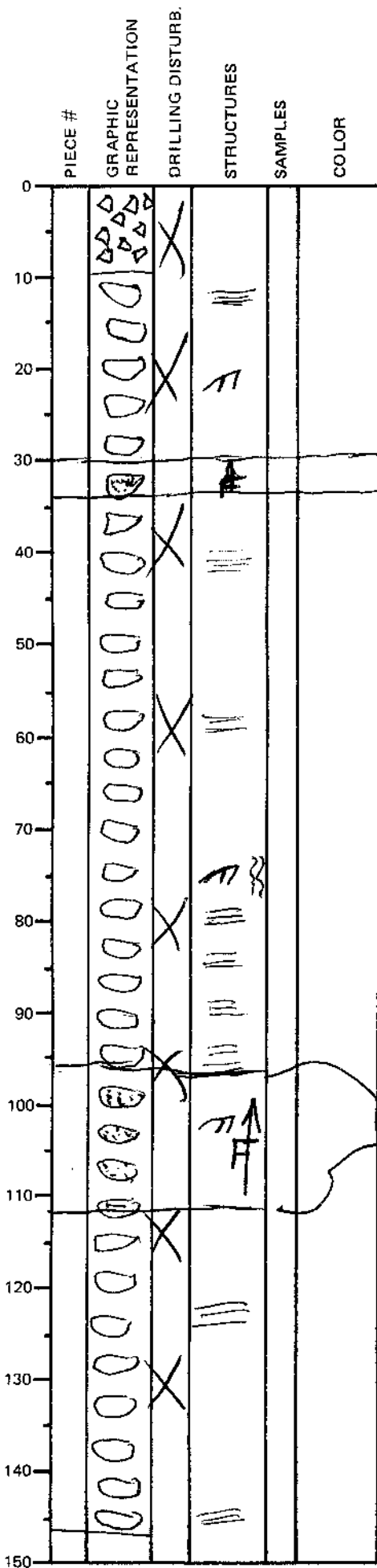
ODP  
VISUAL CORE DESCRIPTION

SEDIMENTS / SEDIMENTARY ROCKS

OBSERVER

LAC

SECTION DESCRIPTION



0-10cm: <sup>cm</sup> Fragments of fine-grained sandstones with mm-sized pyrite fragments

10-147cm: Biscuits of sandy silt (indurated) with parallel lamination, cross lamination, soft deformation

at 30-33 sandstone bed with (Fa/c) bound sequence with scoured base

from 96-111 Turbidite bed with medium grained sand at the base to silt at the top (Fa/c) SILTY SAND

Color: gray (N6)

at 30-32cm: Bleds of pyrite and sphalerite in the sandy ~~matrix~~ (1-2mm) silt

Comments: Hemipelagic intervals of mudstones?