

LEG	SUB	SITE	HOLE	CORE	TYPE	SEC
169		1035D	01	H02		

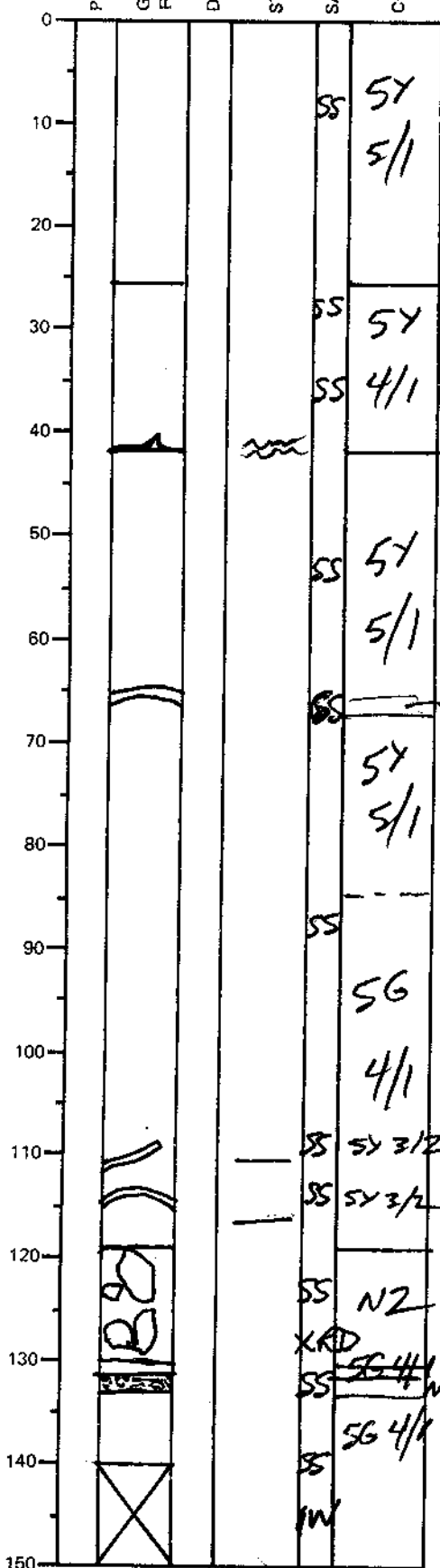
ODP  
VISUAL CORE DESCRIPTION

SEDIMENTS / SEDIMENTARY ROCKS

OBSERVER

LAC/ZE/PET

SECTION DESCRIPTION



0 to 26 cm: SANDY MUD, gray, homogeneous.

26 to 42 cm: FINE SAND, homogeneous, gray. Soft deformed base; abundant black grains.

42 to 119 cm: SANDY MUD, gray, homogeneous; color changes from 42 to 85 cm = gray, to dark greenish gray (85 to 119 cm); contains a layer of SANDY SILT from 65 to 66 cm which is grayish olive green, also contains 2 1-cm-wide layers of olive grey SANDY SILT with sharp bases. These above 3 interlayers = ASH??

from 119 to 130 cm: SULFIDE CLAST BRECCIA consisting of 1 mm to 3 cm diameter sulfide clasts which have 2 dominant textures: ① boxwork ~~and~~ intergrowths of hexagonal plates of pyrrhotite & Fe-rich sphalerite

② 1 to 2 cm wide clasts with "smooth" surface on one side & rough, irregular on the other. Composed of pyrrhotite + poss. sphal & epy. These fragments are likely from disaggregated chimneys or mound crusts.

130-131 cm: SANDY MUD; gray, homogeneous

131 to 132.5 cm SULFIDE MUD, grayish black, v.f. gr. sharp base, diffuse top

132.5 to 140 cm SANDY MUD; gray, homogeneous