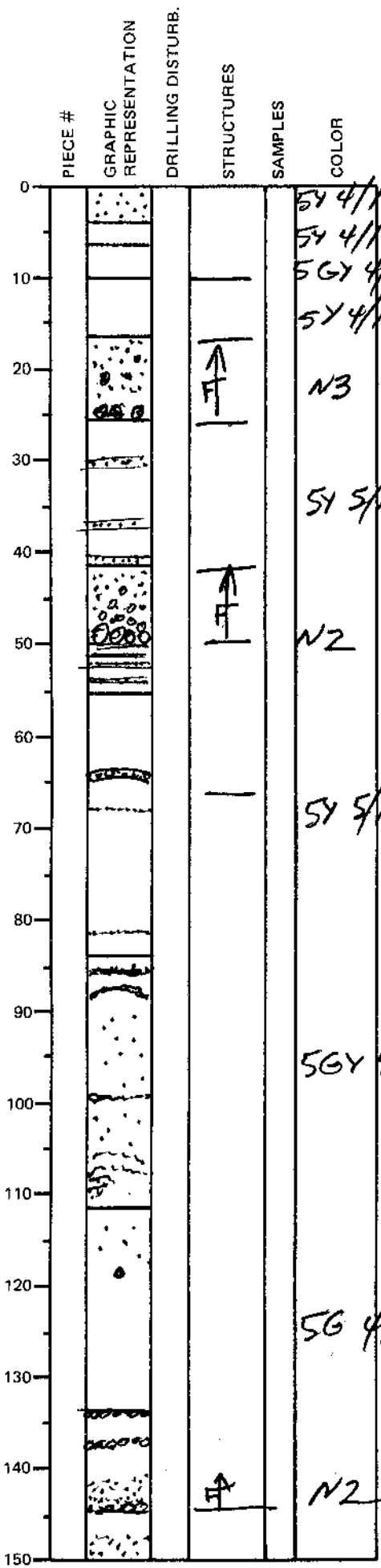


LEG	SUB	SITE	HOLE	CORE	TYPE	SEC
169		1035D		01	H03	

ODP
VISUAL CORE DESCRIPTION

SEDIMENTS / SEDIMENTARY ROCKS

OBSERVER
LAC/PET



SECTION DESCRIPTION

5Y 4/1 0-4 cm SULFIDE SILT
 5Y 4/1 4-6 cm: SANDY MUD
 5G 4/1 6-10 cm: SILTY SAND.
 5Y 4/1 10-17 cm: SANDY MUD
 N3 17-26 cm: SULFIDE SAND dark grey; with 3% sulfide clasts ~~to~~ ~~3mm~~ 1mm to 1cm, pyrrhotite-rich.
 5Y 5/1 26 to 42 cm: SILTY CLAY interbedded with SANDY SILT (dark grey)
 N2 42 to 55 cm: SULFIDE SAND; pyrrhotite-rich (sharp base, fining upwards from 50 to 42); grains to 1mm; clasts to 1cm. minor interbeds of SANDY SILT.
 5Y 5/1 55 to 83 cm: CLAYEY SILT gray; two minor interbeds of SULFIDE SAND (64-65 cm; 68 cm; 82 cm)
 83 to 112 cm: SANDY MUD (dark grey) with minor 0.5 to 0.8 cm wide SULFIDE SAND ~~interbeds~~ interbeds (pyrrhotite-rich); overall contains 7% mm-sized disseminated sulfide clasts. ~~with~~
 5G 4/1 112 to 134 cm: SANDY MUD, dark grayish gray; homogeneous or rare sulfide blebs (< 1%)
 134 to 150 cm: SULFIDE SAND, grayish black, 4mm to 2mm clasts; pyrrhotite-rich; interbedded with SANDY MUD with f.g. disseminated sulfides.