

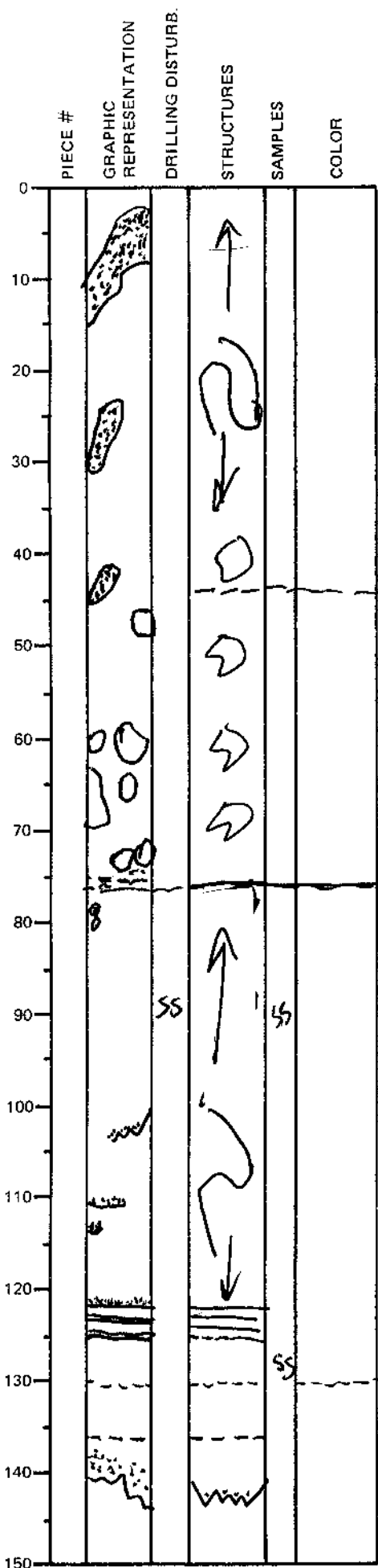
LEG	SUB	SITE	HOLE	CORE	TYPE	SEC
169		1035	D		ZH	3

ODP
VISUAL CORE DESCRIPTION

SEDIMENTS / SEDIMENTARY ROCKS

SECTION DESCRIPTION

OBSERVER
PAB



dismembered coarse sand turbidites

disrupted hemipelagic silty clay bed with dismembered coarse sand turbidites

sedimentary breccia (probable debris flow)
silty clay ~~matrix~~ clasts in coarser fine sand matrix
clasts are subangular and range from 0.5 to 5 cm
45 to 76 cm.

~~base of breccia~~ base of breccia: erosional turbidite sand base

disrupted hemipelagic silty clay bed (slump?)

dismembered fine turbidites

fine parallel lamination

turbidite with scoured base