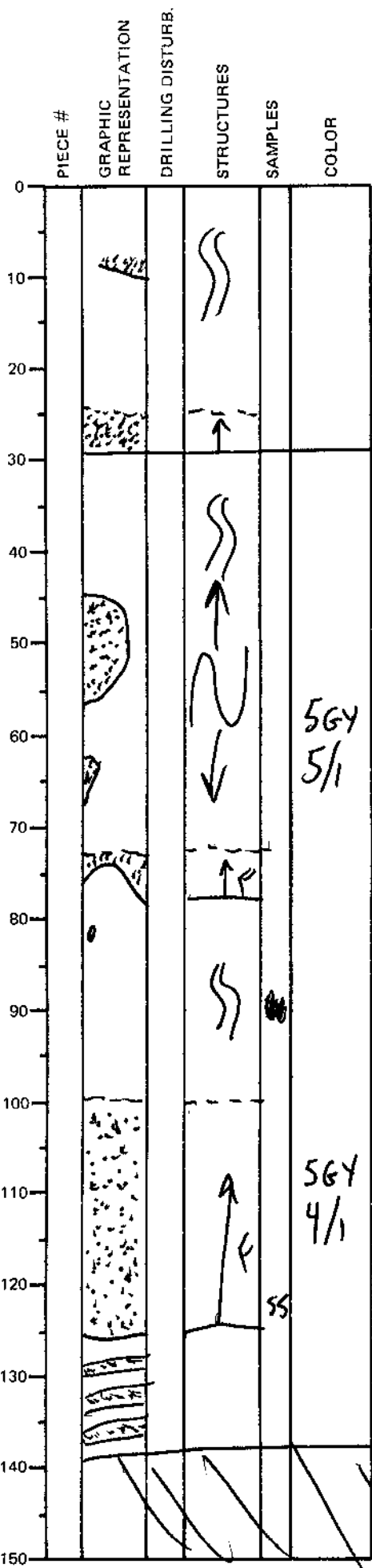


LEG	SUB	SITE	HOLE	CORE	TYPE	SEC
1	69	103	SD	24		4
OBSERVER						
PAB						

ODP
VISUAL CORE DESCRIPTION

SEDIMENTS / SEDIMENTARY ROCKS

SECTION DESCRIPTION



lithotypes:
 fine sand turbidites; dark greenish gray (5GY 4/1)
 fining upward into silty clay hemipelagite; greenish gray (5GY 5/1); bioturbated
 from 75 to top of core is mildly slumped zone.

dismembered turbidites
 slumped interval from 75 cm upward

small burrow of sulfide and white anhydrite(?)

ss @ 124 contains is silt w/ qb, felds., opaques and green amphibole

IW