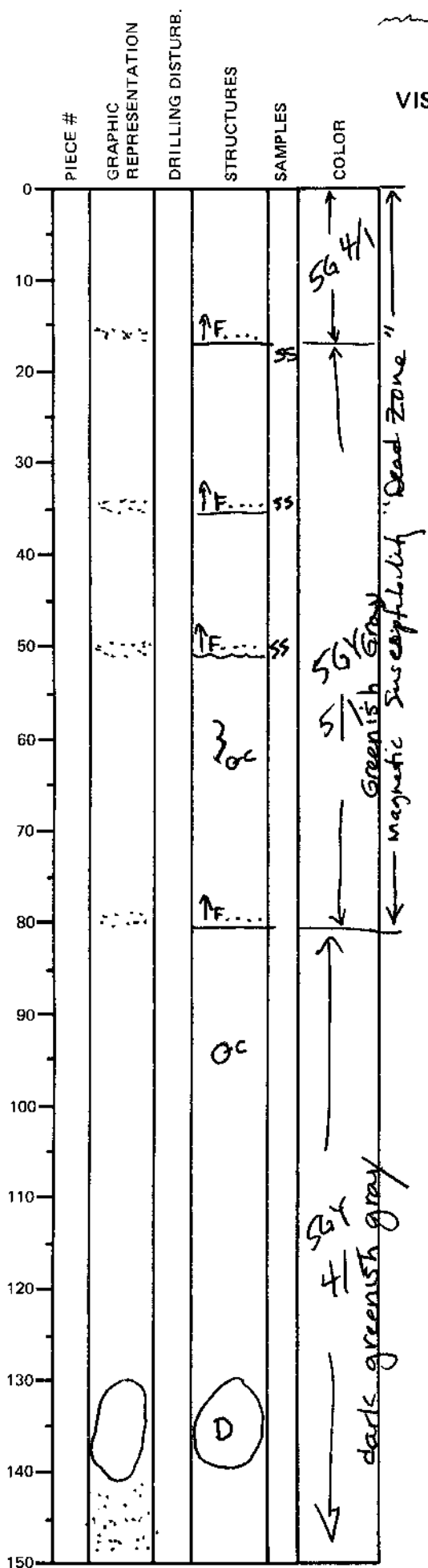


LEG	SUB	SITE	HOLES	CORE	TYPE	SEC
169		1035D		03M	03	
OBSERVER						
CAR						

ODP  
VISUAL CORE DESCRIPTION

SEDIMENTS / SEDIMENTARY ROCKS

SECTION DESCRIPTION



Dominant Lithology:

Greenish gray to dark greenish gray SILTY CLAY with thin interbeds of gray (W 6/1) to dark greenish gray (5G 4/1) FINE to VERY FINE SAND.

SILTY CLAY is locally bioturbated and contains carbonate & dolomite nodules.

SAND occurs as fining-upward laminations and beds (0.5cm to 7cm thick) with sharp to scour bases.

ss @ 19 & 35cm are dolomiticrite  
 ss @ 48cm is gb, felds., volcanic rk. frags., amphibole, epidote, & pyroxene