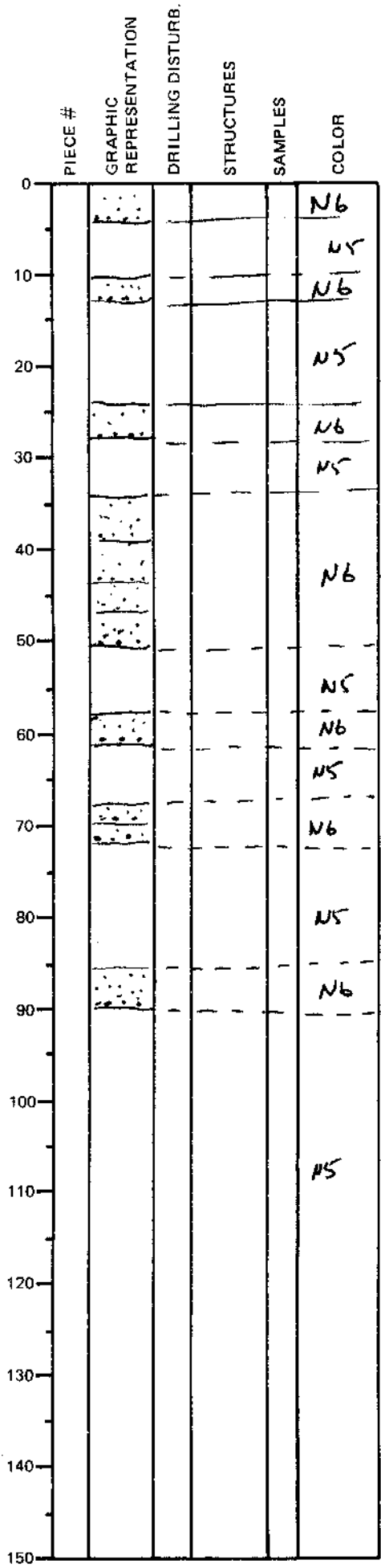


LEG	SUB	SITE	HOLE	CORE	TYPE	SEC
169		1035D			SH01	
OBSERVER						
WG						

ODP  
VISUAL CORE DESCRIPTION

SEDIMENTS / SEDIMENTARY ROCKS

SECTION DESCRIPTION



Moderately Indurated Light to medium gray interbedded pale gy (N6) turbiditic silt and fine sandstone and med. gy (N5) silty claystone.

Hard lump of indurated claystone 35-38cm, 19-24cm.

Hydrothermal alteration has destroyed some of the original colour differences between unaltered sand turbidites and hemipelagic silty clay.

White specks of anhydrite distributed throughout the core