

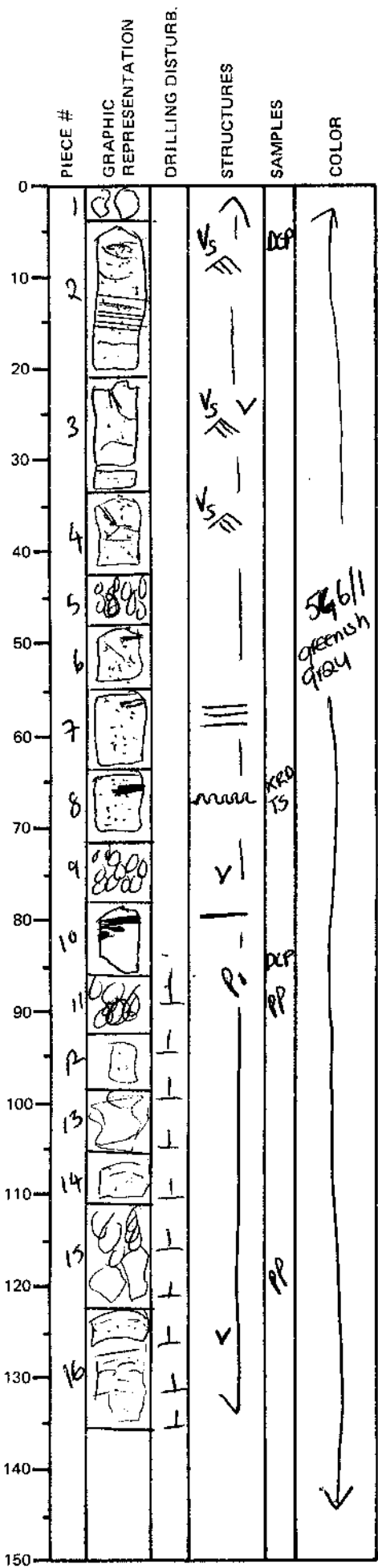
LEG	SUB	SITE	HOLE	CORE	TYPE	SEC
169		1035D		20X		1

ODP
VISUAL CORE DESCRIPTION

SEDIMENTS / SEDIMENTARY ROCKS

SECTION DESCRIPTION

OBSERVER
DNC / ZUF / JET
NEH



Major lithology: SILTSTONE — Very altered to clay minerals.

less than 2% pyrrhotite mineralisation
[mainly disseminated with 5% of mineralisation as subhorizontal vans (±qtz)]

Weakly indurated

Lamination
* ~~is dipping~~ is dipping about 10°

Piece 2 has 1mm po laths within the siltstone as well as anastomosed subhorizontal van set of 3-4mm thickness.

Pieces 8+10 have pyrrhotite blebs + impregnations
good example of
Piece 10 shows pyrrhotite pseudomorphing cubic pyrite
[Piece 15]

Barrel sheet summary

SILTSTONE WITH MODERATE TO ~~INTENSE~~ INTENSE PERVASIVE CLAY ALTERATION and PERVASIVE PYRRHOTITE DISSEMINATIONS AND MINOR PYRRHOTITE VEINLETS.