

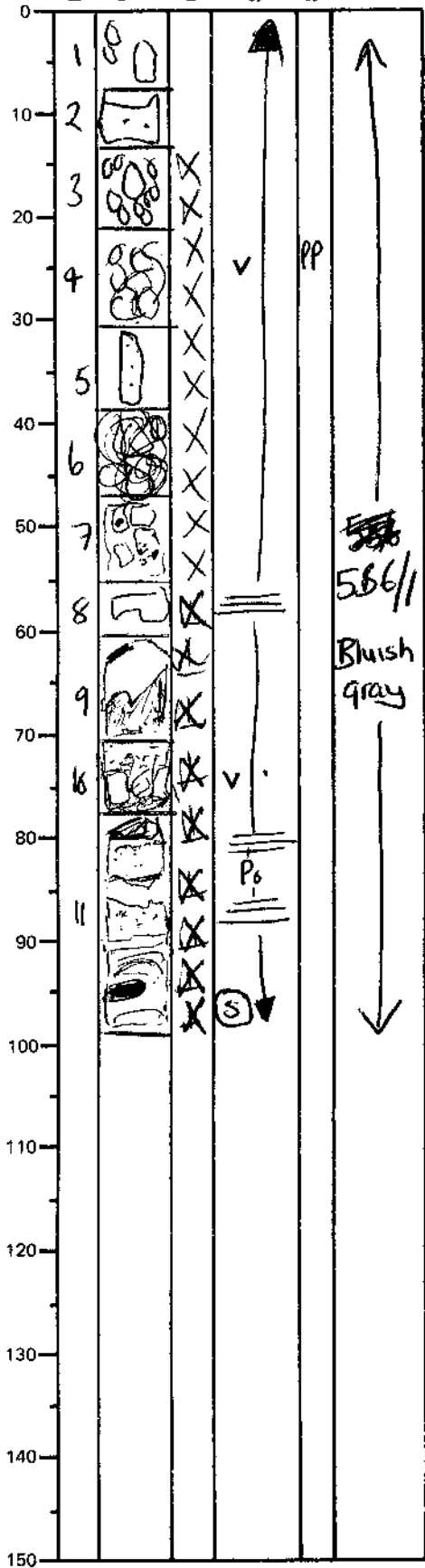
LEG	SUB	SITE	HOLE	CORE	TYPE	SEC
169		1035D		21X		1

ODP
VISUAL CORE DESCRIPTION

SEDIMENTS / SEDIMENTARY ROCKS

OBSERVER
BULLZAP / PETNET.

SECTION DESCRIPTION



Major lithology:

0-55cm: Mudstone
55-97cm: clayey siltstone

Alteration: clay alteration - intense + pervasive.

Weakly indurated

Minerals: po dissemination generally less than 2% over a mappable unit!

also pyrite disseminations - >>> 1%.

Both po + py authigenic - NOT clastic.

92cm: "authigenic" po blebs + crystals ^{morphology of blebs affected by}
94cm: 7mm wide po nodule - ~~drilling~~ disturbance

Notes:

po dissemination increases downcore
py only occurs in piece 11 where po is most abundant.

BARREL SHEET SUMMARY: MUDSTONE WITH INTENSE PERVASIVE ALTERATION TO CLAY MINERALS. PERVASIVE PYRRHOTITE DISSEMINATION with minor pyrite dissemination