

LEG	SUB	SITE	HOLE	CORE	TYPE	SEC
169		1035D		24	KCC	

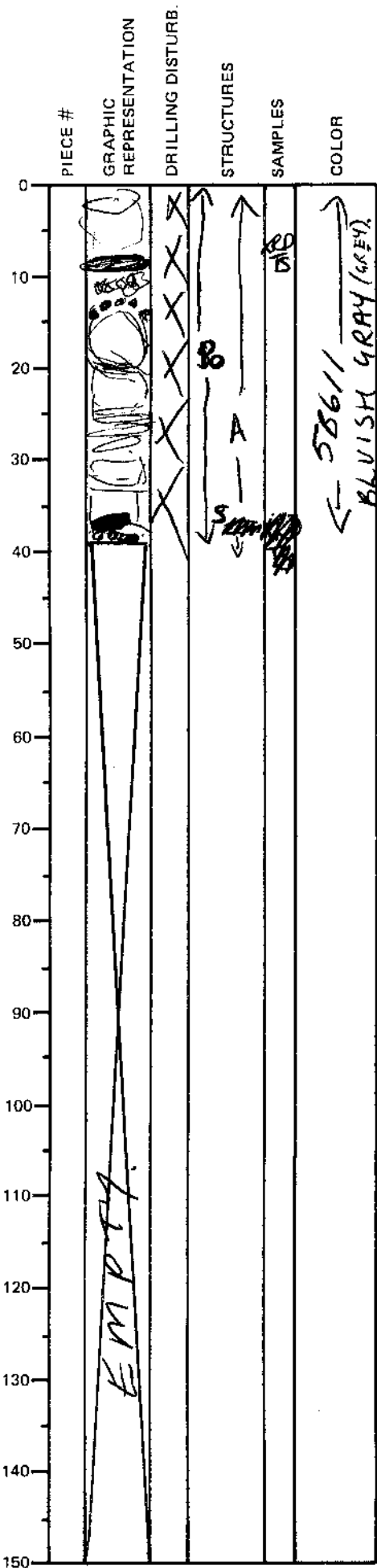
ODP
VISUAL CORE DESCRIPTION

SEDIMENTS / SEDIMENTARY ROCKS

OBSERVER

SECTION DESCRIPTION

DWC / PET



major lithology: CLAY ALTERED MUDSTONE
with disseminated + patchy
pyrrhite (2-5%) + minor
pyrite > 2% + disseminated
anhydrite > 2%.

~~pyrrhite~~

9-13cm sulphide pebbles in drill induced
mud (pyrrhite - pyrite).
± sphal + anhydrite.

between 7-8cm one piece of dark grey
silicified sediment that has patches
of a pistachio green mineral ... however
this is NOT epidote/smecton shale) ~ just green qtz.
(but to be XRD'd + TIS'd ...)

*occasional black xtals assoc'd with py-po
sphalente? but may be magnetite (not allowed to use
magnets on cores.)
sulphide / anhydrite patch at 35-38cm
disturbed by drilling. consists of
pyrite cubes, anhydrite xtals + po xtals.
rubble at base of core is silicified
with 5-10% sulphides.

BARREL SHEET SUMMARY

Clay altered mudstone with
disseminated pyrrhite + pyrite
(+ anhydrite)