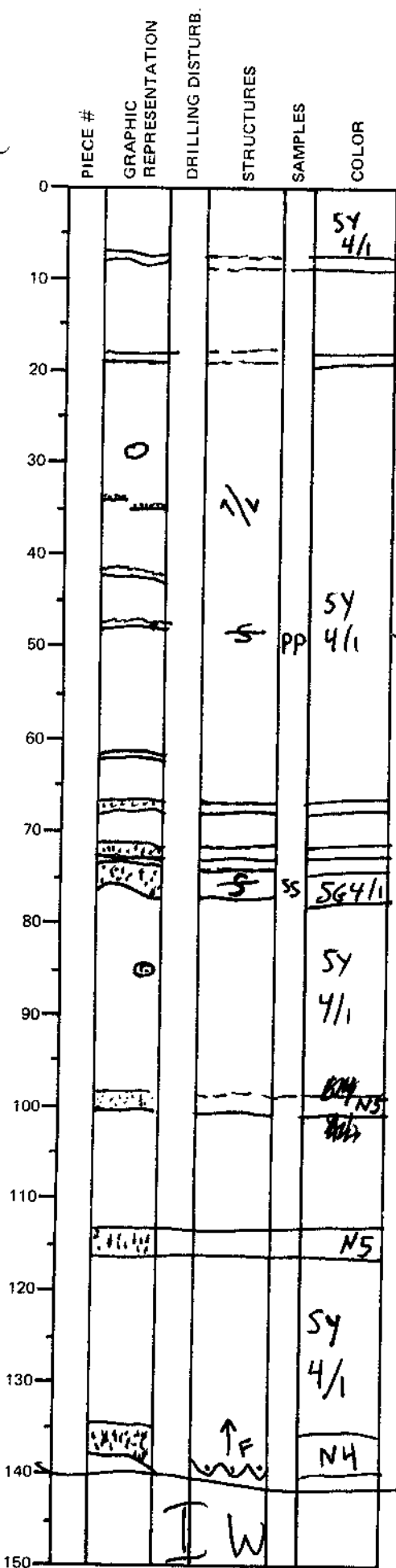


LEG	SUB	SITE	HOLE	CORE	TYPE	SEC
169		1035E			14	4
						OBSERVER
						PAB

ODP  
VISUAL CORE DESCRIPTION

SEDIMENTS / SEDIMENTARY ROCKS

SECTION DESCRIPTION



major lithology:  
silty clay  
non-indurated  
dark gray (544/1) with  
two different types  
of interbeds:

(a) dark greenish gray  
(564/1) clay with black  
sulfide clasts and  
sand

(b) minor silt to  
very ~~fine~~ fine sand  
turbidite, gray (NS)

probable resedimented sulfide sand and clasts  
black spots in green clay matrix

mag. susceptibility picks  
out fine silts and  
fine sands

minor distal turbidite?; silt; gray (NS)

silt bed, distal turbidite? gray (NS)

very fine sand turbidite, gray (NS)