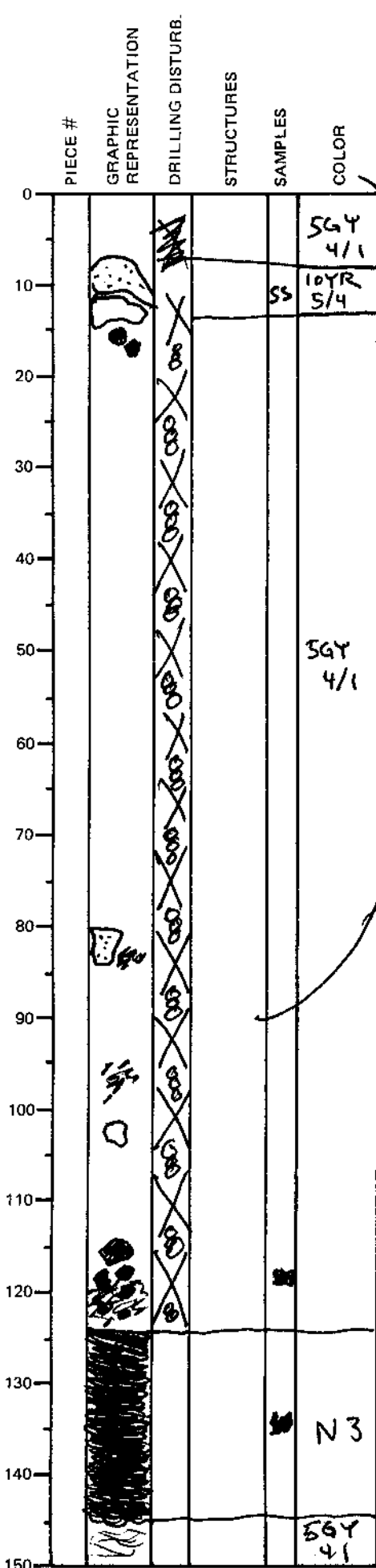


LEG	SUB	SITE	HOLE	CORE	TYPE	SEC
169		1035E			2H	1
OBSERVER						
WCS						

ODP
VISUAL CORE DESCRIPTION

SEDIMENTS / SEDIMENTARY ROCKS

SECTION DESCRIPTION



Greenish Gray
(10YR 5/4)

7-12cm: Yellowish Brown silty clay
fossiliferous with barite layer

12-15cm: Moderately indurated
(5GY 4/1)
Greenish Gray claystone ~~piece~~

15-124cm: Non-indurated goeey "suck in"
clay with pieces of sulfide,
indurated claystone, and
one piece of yellowish brown
silty clay at 80-85cm.
Pyrrhotite with minor pyrite
dominated the sulfide
pieces
Indurated claystone pieces
are like 12-15cm

~~100-124cm~~
Core that
fell in the
hole and
was not recorded

125 - 145 cm

Very Dark Gray (N3) Sulfide
Mud. Black sulfide grains up to
coarse sand size. 50-60% sulfide

147-150 cm

Greenish Gray indurated claystone