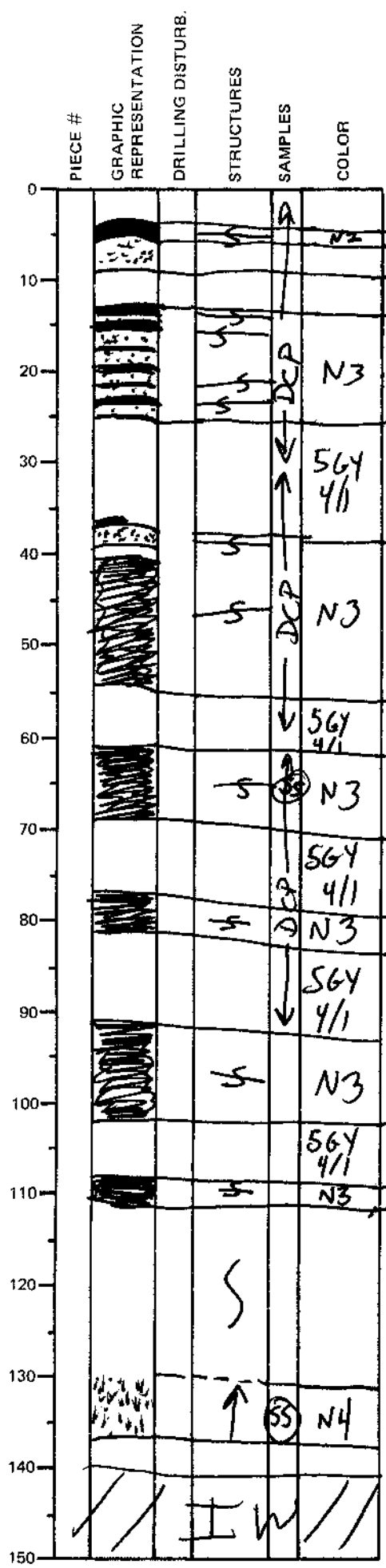


LEG	SUB	SITE	HOLE	CORE	TYPE	SEC
169		1035E			ZH	2
OBSERVER						
PAB						

ODP
VISUAL CORE DESCRIPTION

SEDIMENTS / SEDIMENTARY ROCKS

SECTION DESCRIPTION



N2 clastic sulfide
5 to 50% sulfide
Weakly indurated clay

N3 clastic sulfide
5 to 50% sulfide

564/4/1 weakly indurated clay

N3 clastic sulfide
20% sulfide

564/4/1 moderately indurated claystone

N3 clastic sulfide
50% sulfide; some barite

564/4/1 weakly ~~partially~~ indurated clay

N3 clastic sulfide, 30% sulfide

564/4/1 moderately ~~partially~~ indurated claystone

N3 clastic sulfide, 30% sulfide

564/4/1 moderately ~~partially~~ indurated claystone
clastic sulfide

non indurated clay

N4 very fine sand, sharp basal contact
fining upward

Interbedded:

(a) nonindurated to partially indurated clay/claystone dark grayish gray (564/4/1)

(b) ~~dark gray~~ (N3) clastic sulfide sand with grains up to 5mm in diameter; these are subangular

(c) dark gray (N4) very fine sand trifidite
130-136 cm