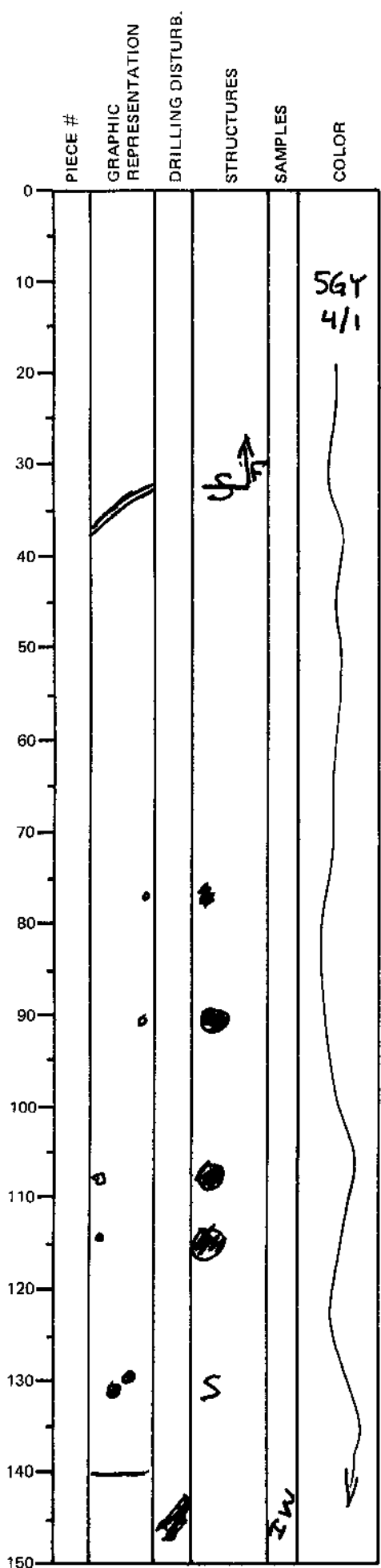


LEG	SUB	SITE	HOLE	CORE	TYPE	SEC
169		1035	E		ZH	5
OBSERVER						
SHA						

ODP
 VISUAL CORE DESCRIPTION
 SEDIMENTS / SEDIMENTARY ROCKS
 SECTION DESCRIPTION



Major Lithology - Silty Clay

0-40 cm: Greenish gray (5GY 4/1) weakly indurated SILTY CLAY. Homogeneous except for a thin sulfide layer at 33-38 cm and Sulfide clasts at 129-132 cm. Sulfides are dominantly pyrrhotite.

Pockets of forams with feldspar and qtz fine sand