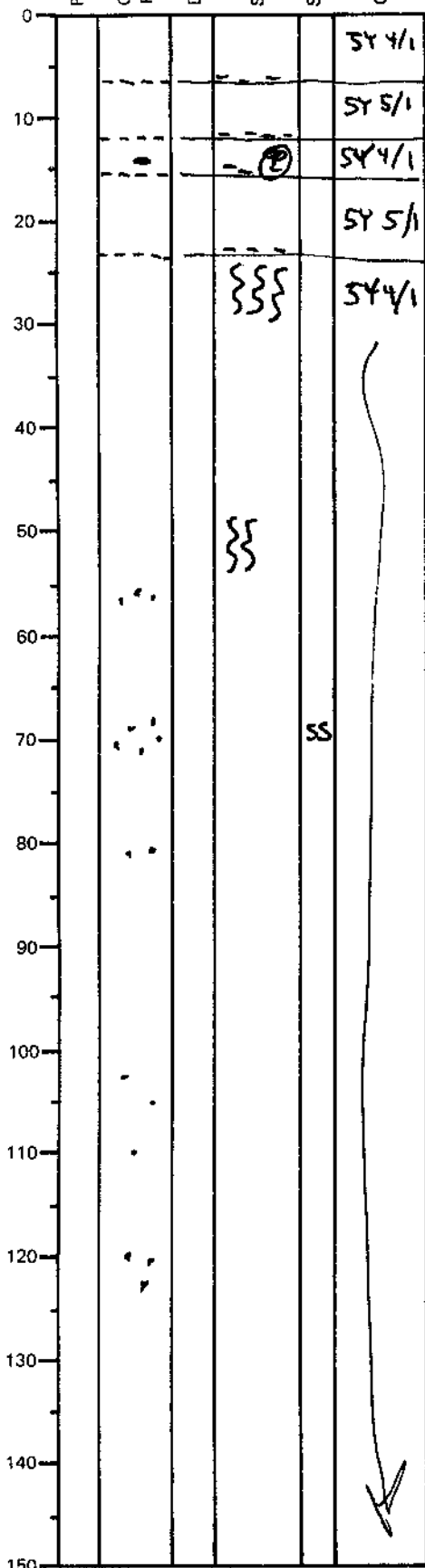


LEG	SUB	SITE	HOLE	CORE	TYPE	SEC
169		1035		34	6	
OBSERVER						
SHA						

ODP
VISUAL CORE DESCRIPTION

SEDIMENTS / SEDIMENTARY ROCKS

SECTION DESCRIPTION



Major Lithology: SILTY CLAY

pyritized burrow
0-150 cm: Dark gray (SY 4/1), weakly indurated, homogeneous SILTY CLAY. Clearly bioturbated at 26-30 cm and 44-52 cm. With two interbeds of gray (SY 5/1) SILTY CLAY at 7-12 cm and 16-22 cm. Color change is the only distinguishing feature of these interbeds. White, small pockets (1-3 mm diameter) of silt-sized quartz-feldspar and calcite occur at 57-58 cm, 68-72 cm, 82-87 cm, 104-110 cm, and 120-122 cm.

Less than 20% Sulfide - actual none apparent