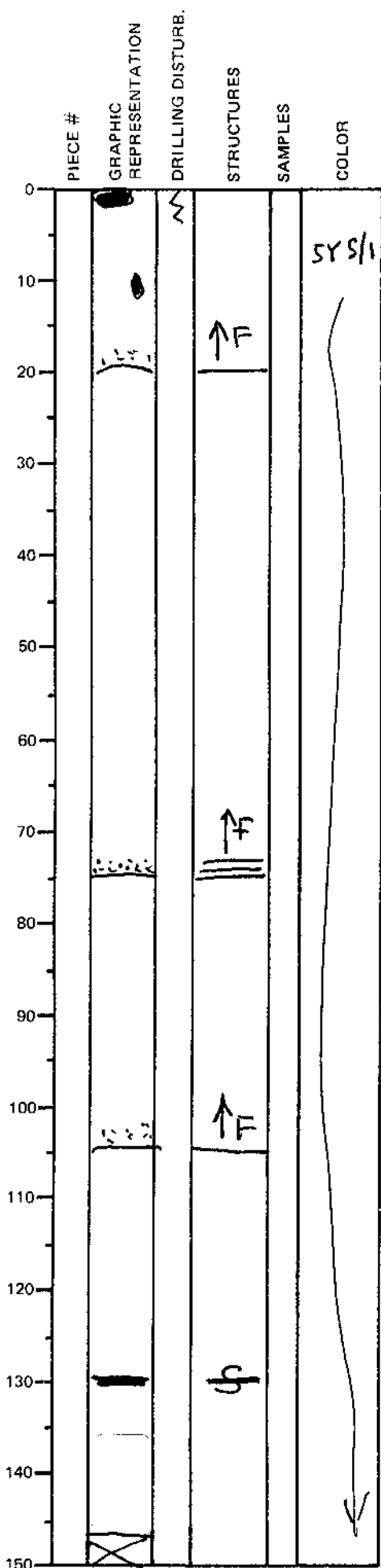


LEG	SUB	SITE	HOLE	CORE	TYPE	SEC
169		1035E		4	H01	01
OBSERVER						
SHA						

ODP  
VISUAL CORE DESCRIPTION

SEDIMENTS / SEDIMENTARY ROCKS

SECTION DESCRIPTION



Major Lithology: SILTY CLAY  
(5Y5/1)

0-146 cm: Greenishgray, weakly indurated SILTY CLAY with silt interbeds and one well indurated sulfide bed (1-2mm thick) at 130cm.

Massive sulfide clast about 2cm across at the top of this section / core. May represent sulfides that fell into the hole from higher sulfide unit.