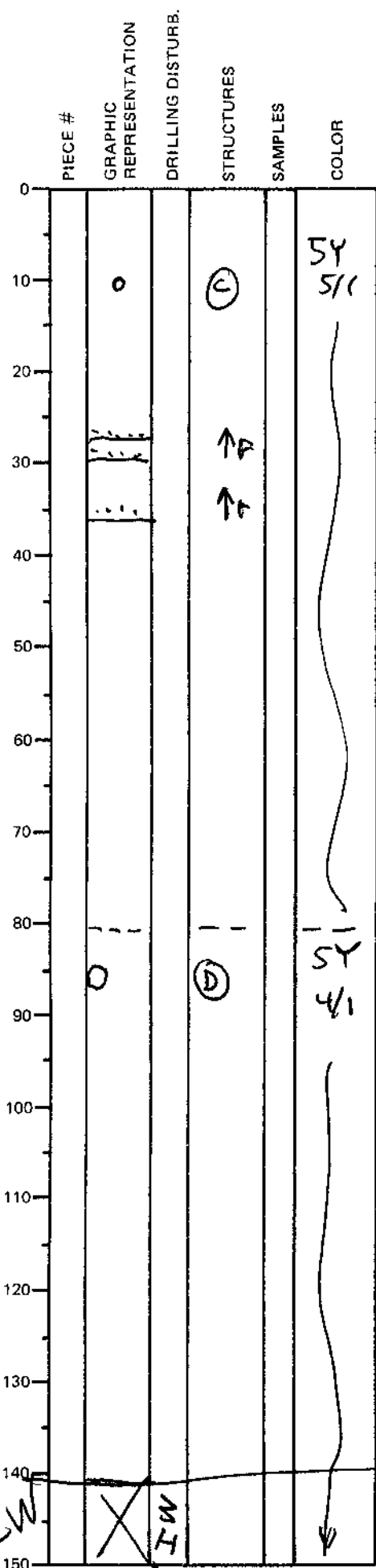


LEG	SUB	SITE	HOLE	CORE	TYPE	SEC
169		1035	E		GH	3
ODP VISUAL CORE DESCRIPTION						OBSERVER
SEDIMENTS / SEDIMENTARY ROCKS						SHA
SECTION DESCRIPTION						

ODP  
VISUAL CORE DESCRIPTION

SEDIMENTS / SEDIMENTARY ROCKS

SECTION DESCRIPTION



MAJOR LITHOLOGY: SILTY CLAY

0-140 cm: Weakly indurated  
SILTY CLAY. Gray  
(5Y 5/1) to 80 cm then  
(5Y 4/1)  
Dark Gray from 80-140 cm  
Indurated mud pieces at  
10 cm and 85 cm.  
Interbedded silt layers  
1 mm to 1 cm thick.

- dolomite/pyrite nodule at 85 cm
- calcite nodule at 10 cm

dolomite + pyrite nodule