

ODP  
VISUAL CORE DESCRIPTION

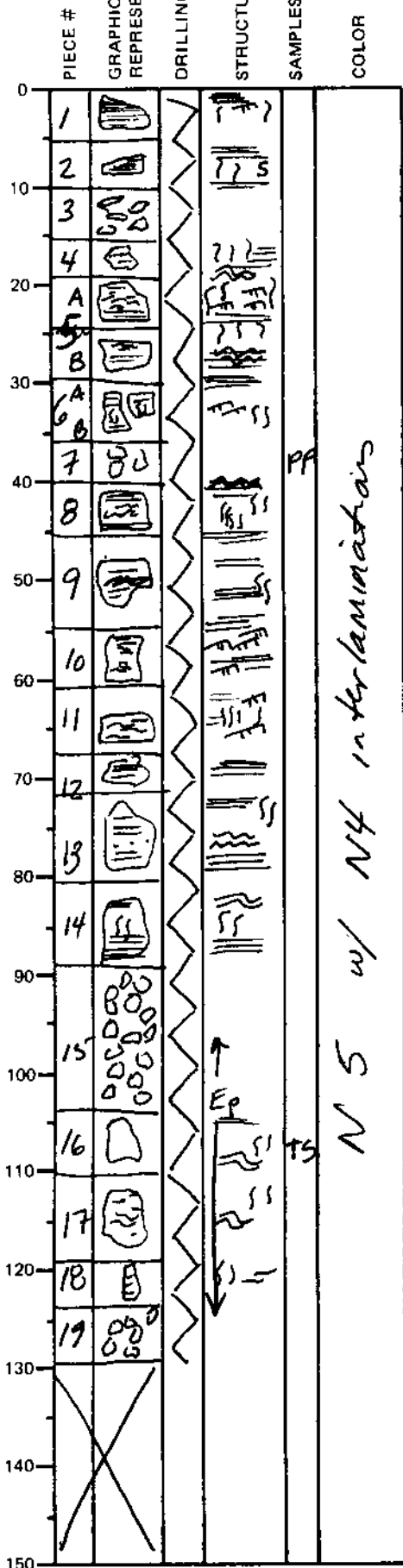
LEG	UCB	SITE	LE	CORE	PE	SEC
169		1035F		19R01		

SEDIMENTS / SEDIMENTARY ROCKS

OBSERVER

SECTION DESCRIPTION

CAR



Gray (N 51) ~~to dark gray~~  
~~N 41~~ FINE to MEDIUM  
 SANDSTONE interbedded with  
 dark gray (N 41) laminations  
 of SILT.

Parallel and wavy laminations are  
 characteristic of this interval.  
 Bioturbation is common in  
 the FINE SANDSTONE and  
 SILT intervals. No <sup>red</sup> fining upward  
 intervals are present

pieces 15-19 are slightly  
 greener than the rest of  
 the section -- they have  
 a light greenish gray 5G7 711  
 alteration color (probably epidote)

to none  
 only minor (<1%) sulfide mineralization  
 in this section