

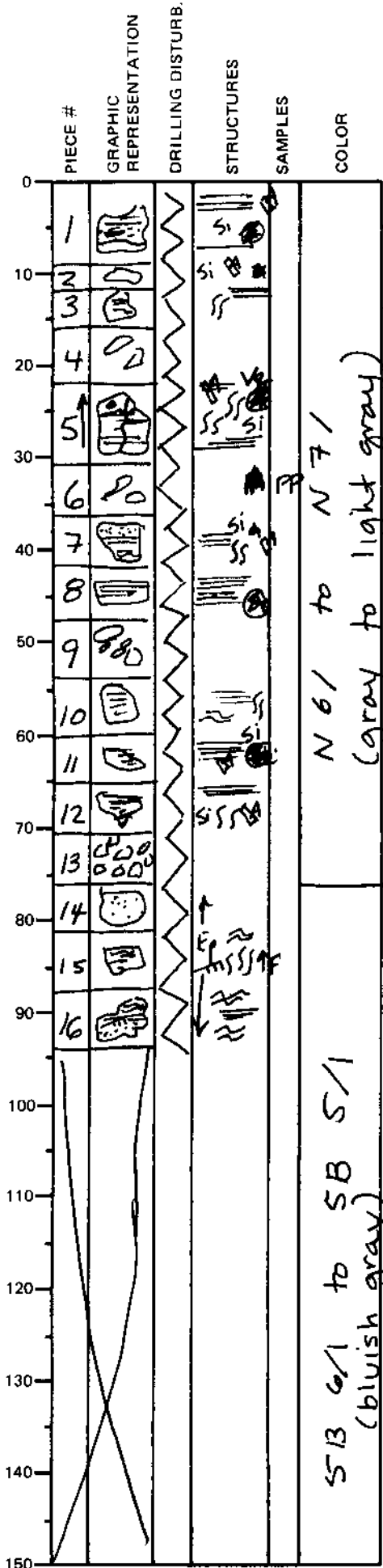
LEG	SUB	SITE	NO.	CORE	TYPE	SEC
169		1035F		20R01		

ODP  
VISUAL CORE DESCRIPTION

SEDIMENTS / SEDIMENTARY ROCKS

SECTION DESCRIPTION

OBSERVER
CAR



(N7)  
Light Gray FINE SANDSTONE inter laminated with ~~light~~ gray (N6) FINE SANDSTONE and SILTSTONE.

Silicification is pervasive. Quartz crystals fill anhydrite molds and round (2-3 mm diameter) burrow-fill (?) "blebs." Most of the anhydrite is now gone.

The FINE SS. & SILTSTONE exhibit parallel laminations, wavy laminations, and moderate bioturbation. Rare MEDIUM SANDSTONE is present in pieces 1 & 7.

→ lithologic change between pieces 13 & 14 → this is really more of a color change than a change in texture -- probably the result of alteration (epidote?)

pieces 15 & 16 are bluish gray (SB 5/1) FINE SANDSTONE with wavy to parallel laminations & moderate bioturbation. Cross lamination is present in piece 15.