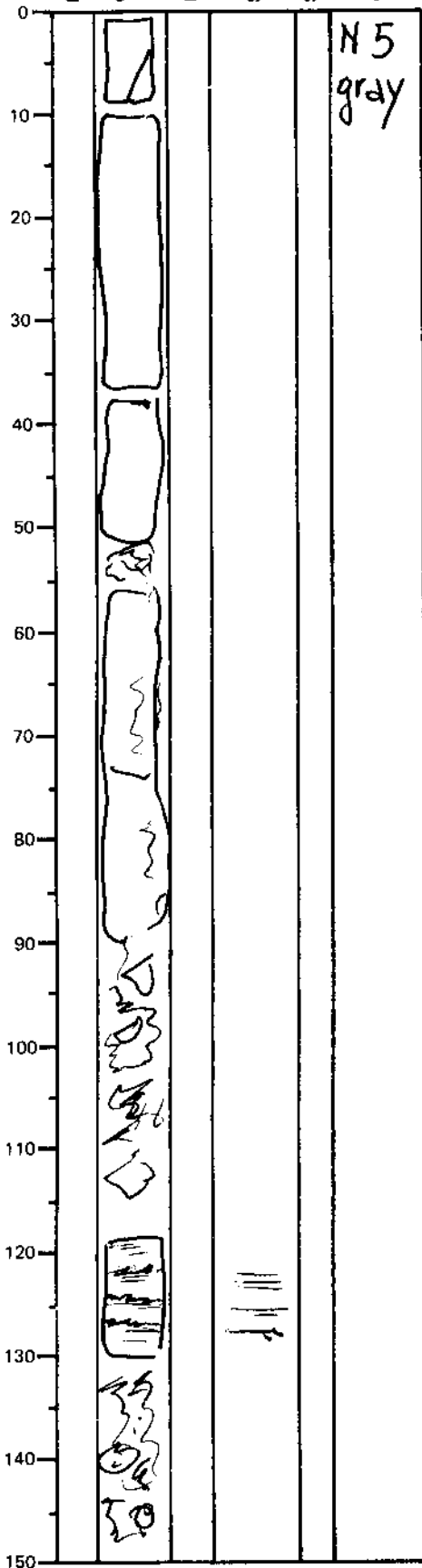


LEG	SUB	SITE	HOLE	CORE	TYPE	SEC
169		1035G		06	W02	
ODP VISUAL CORE DESCRIPTION						OBSERVER
SEDIMENTS / SEDIMENTARY ROCKS						GZ
SECTION DESCRIPTION						



SUMMARY

Fine laminated thin mud turbidites with silty-clayey deformed laminae

Inclination: moderately to medium inclined.

Fine disseminated anhydrite < 1% from 130-150 cm

BARREL

Thin ^{parallel} laminated MUDSTONE
Turbidites

piece from 120-130 cm has been cut