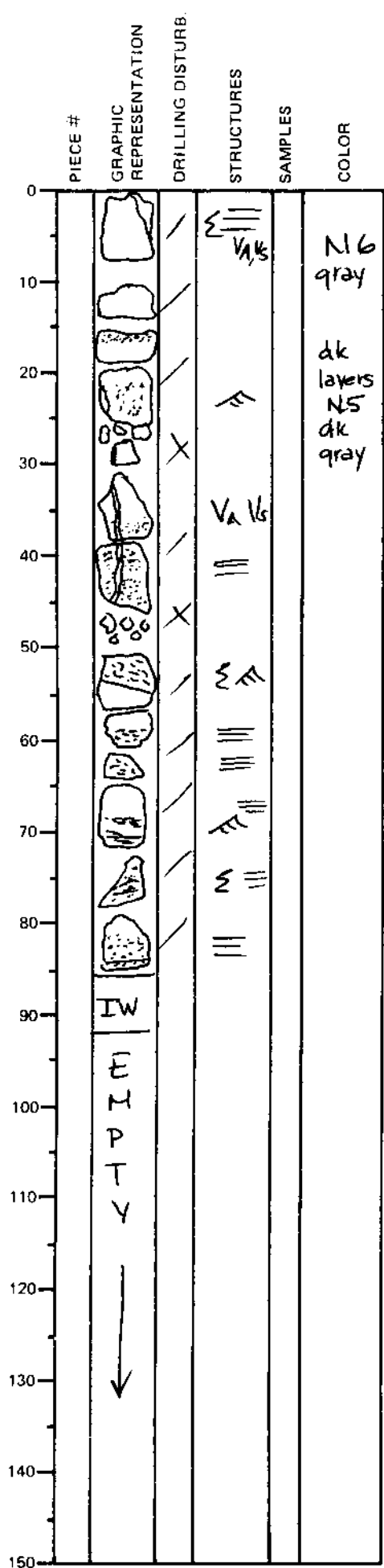


LEG	SUB	SITE	HOLE	CORE	TYPE	SEC
169		1035	6	09	R01	
OBSERVER						
BJE/MAR						

ODP  
VISUAL CORE DESCRIPTION

SEDIMENTS / SEDIMENTARY ROCKS

SECTION DESCRIPTION



Major Lithology: Siltstone (N6)  
finely laminated to fine Sandstone  
interbedded. Locally cross-bedded, as  
indicated in structure column.  
Parallel laminations throughout.

Vein 3mm containing Anhydrite, Chalcopyrite, Sphalerite  
Top of piece silty sand FINE SAND  
lower part of piece

Chondrites bioturbation 45cm to end of core

Sand units indicated by speckling

< 2% Sulfide

Cpy, Qtz, Sph  
1mm ~~vein~~ vein in first piece  
Qtz assoc. w/ sulfides in vein