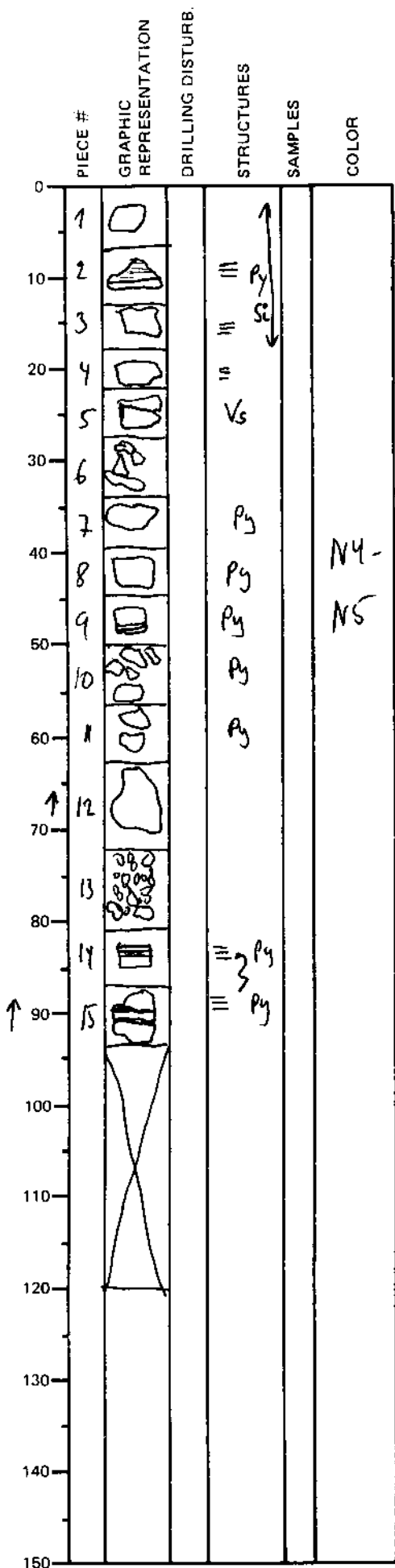


LEG	SUB	SITE	HOLE	CORE	TYPE	SEC
169		10356		12		01
OBSERVER						
BJE						

ODP  
VISUAL CORE DESCRIPTION

SEDIMENTS / SEDIMENTARY ROCKS

SECTION DESCRIPTION



Pieces 1-15 (all): Siltstone (locally parallel-aminated. Color Gray (N5) to dark gray (N4). Pyrite is present in subhorizontal mm-thick veins and veinlets. (total sulfide less than 5%). ~~Green schists present around the veins in pieces 14 and 15. Could be chlorite or epidote.~~ Specks or blebs 1-3 mm large are present throughout. Of aggregates with an unknown phase, could be fine-grained anhydrite or zeolite? Sphalerite associated with pyrite in piece 8. Irregular patches of epidote (?), partly controlled by bioturbation in pieces 14 and 15.

