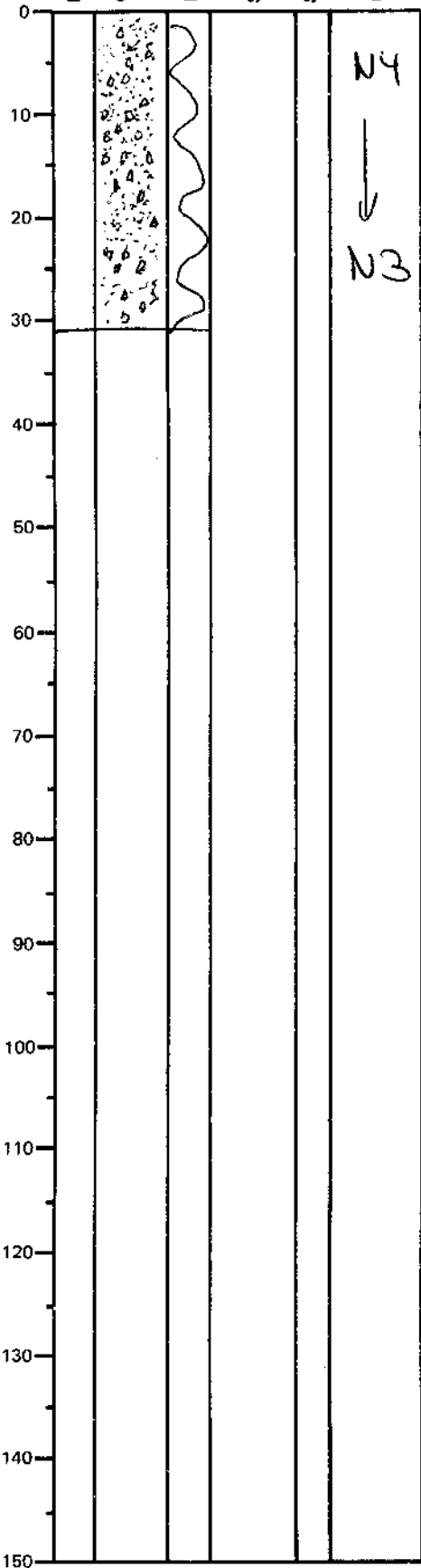


LEG	SUB	SITE	HOLE	CORE	TYPE	SEC
169		1035H		01H01		
OBSERVER						
LAC/PET						

ODP  
VISUAL CORE DESCRIPTION

SEDIMENTS / SEDIMENTARY ROCKS

SECTION DESCRIPTION



clastic sulfide (?) highly disturbed  
 clasts 1mm - 1cm diameter  
 The fine-grained sediment (silt/sand)  
 composed mainly of authigenic silica, chlorite, Mg-smectite and sulfides  
 Clasts composed of sulfide and silica (amorph)  
 or fine-grained quartz  
 minor oxidation