

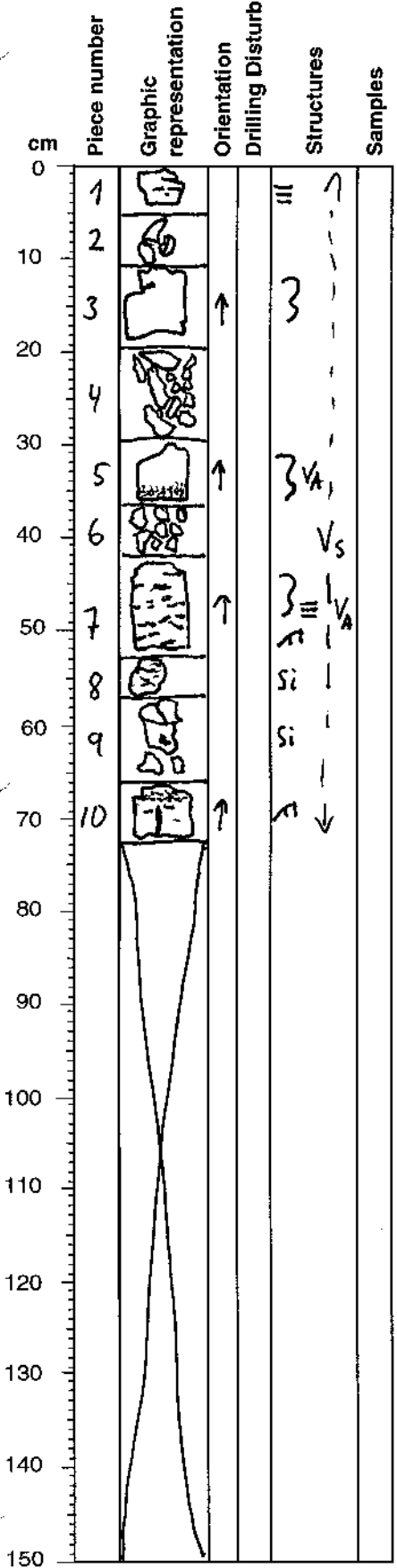
# SULFIDE VISUAL CORE DESCRIPTION WORKSHEET

169- 1035 H - 4 R - 2

Observer: BUE

SITE/HOLE/CORE/SECTION

**BARREL SHEET SUMMARY:** Siltstone to fine sandstone with mainly impregnations of pyrrhotite, ~~thin~~ veinlets of pyrrhotite, and minor chalcopryite and sphalerite. Some bioturbation and planar laminations in the sediments.  
Color: Dark gray to gray (M4 - M6)



- 1-2: Fine sandstone, pyrrhotite with minor chalcopryite and sphalerite in veinlets
- 3: Siltstone with minor pyrrhotite
- 4: Rubbles of siltstone with very minor pyrrhotite
- 5: Heavily bioturbated (Chondrites) siltstone with a very strong impregnation (60%) of pyrrhotite and minor chalcopryite, sphalerite.
- 6: Rubbles of fine sandstone
- 7: Laminated, cross-laminated bioturbated very fine sandstone with impregnations and veinlets of pyrrhotite with minor chalcopryite. The veinlets are crosscutting the bedding with a low angle. Blebs at and veinlets of anhydrite.
- 8-9: Irregular thin veinlets of pyrrhotite with minor chalco-pyrite in silicified fine sandstone
- 10: Veinlets of pyrrhotite and minor chalcopryite in cross-laminated sandstone.

Generally the veinlets are sub-horizontal