

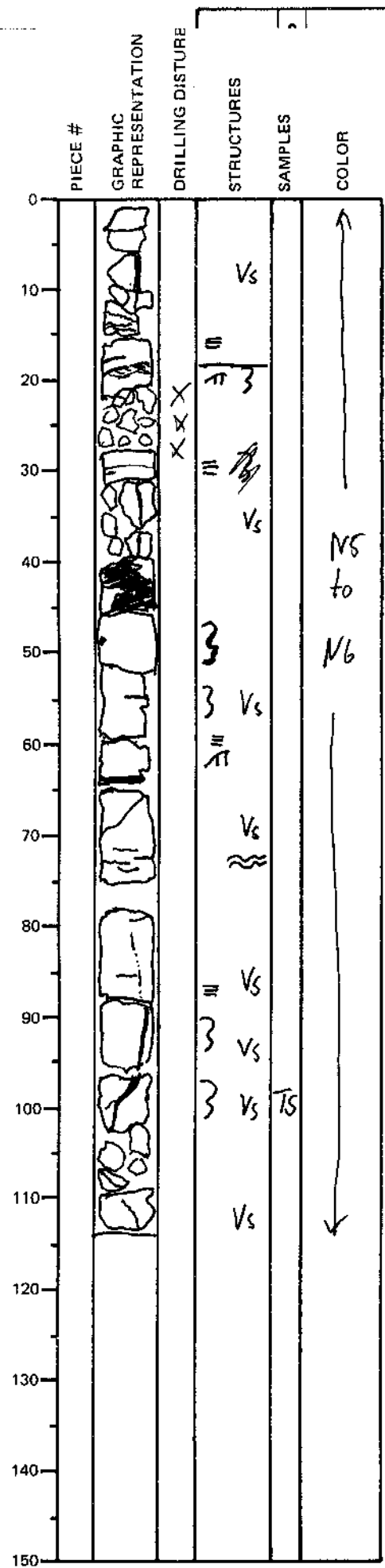
LEG	SUB	SITE	OLE	CORE	TYPE	SEC
169		1035M		5R		1
ELEMENTARY ROCKS				OBSERVER		
DESCRIPTION				BJE		

ltstone and sandstone, with  
 and veinlets of pyrrhotite with  
 sphalerite and chalcopyrite.  
 vertical and sub-horizontal, cross-  
 a low angle and partially replacement

5-N6).  
 of section.

with euhedral marcasite, euhedral  
 quartzite (?), chalcopyrite and  
 white mineral, probably a zeolite and  
 vein with marcasite, pyrrhotite,  
 quartzite (lath-shaped mm-long crystals).

vein with pyrrhotite, chalcopyrite  
 sphalerite.



ODP  
 VISUAL CORE DESCRIPTION  
 SEDIMENTS / SEDIMENT  
 SECTION

Summary:  
 Interbedded sandstone and limestone with  
 minor veins and  
 some marcasite,  
 Veins are both  
 cutting bedding at  
 of bedding.  
 Color: Gray (N6)  
 Sulfides: 5%

Details:  
 6-10 cm: 5 mm  
 black crystals of  
 rosettes of a fibrous  
 anhydrite  
 31-46 cm: 5 mm  
 chalcopyrite and  
 88-103 cm: 1-5 mm  
 and quartzite or