

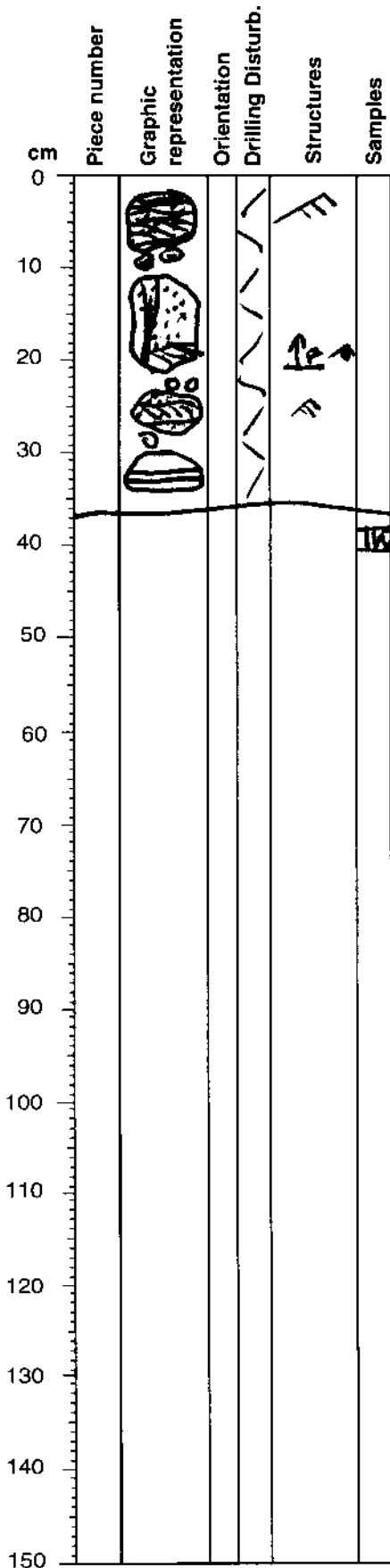
SULFIDE VISUAL CORE DESCRIPTION WORKSHEET

169-10354-7R-1

Observer: BAK

SITE/HOLE/CORE/SECTION

BARREL SHEET SUMMARY: well indurated silty claystone, very fine sandstone and fine sandstone; Gray (N6 to N7); P. ring upward sags (12 to 22 cm); cross lamination in sands. Very weakly mineralized (<2%) with pyrite filling voids and basinal and minor impregnation in claystone.



- Light gray (N6 to N7) cross-laminated, well indurated fine sandstone; non-mineralized (<2% silt)
- P. ring upward sags, cross-laminated at base, cut by vertical, branching 1-2mm thick vein of pyrite (<2%)
- Very fine sandstone, parallel and cross laminated
- Silty claystone with two silt lamina impregnated with pyrite; also a bit of pyrite impregnation in matrix (<2%)